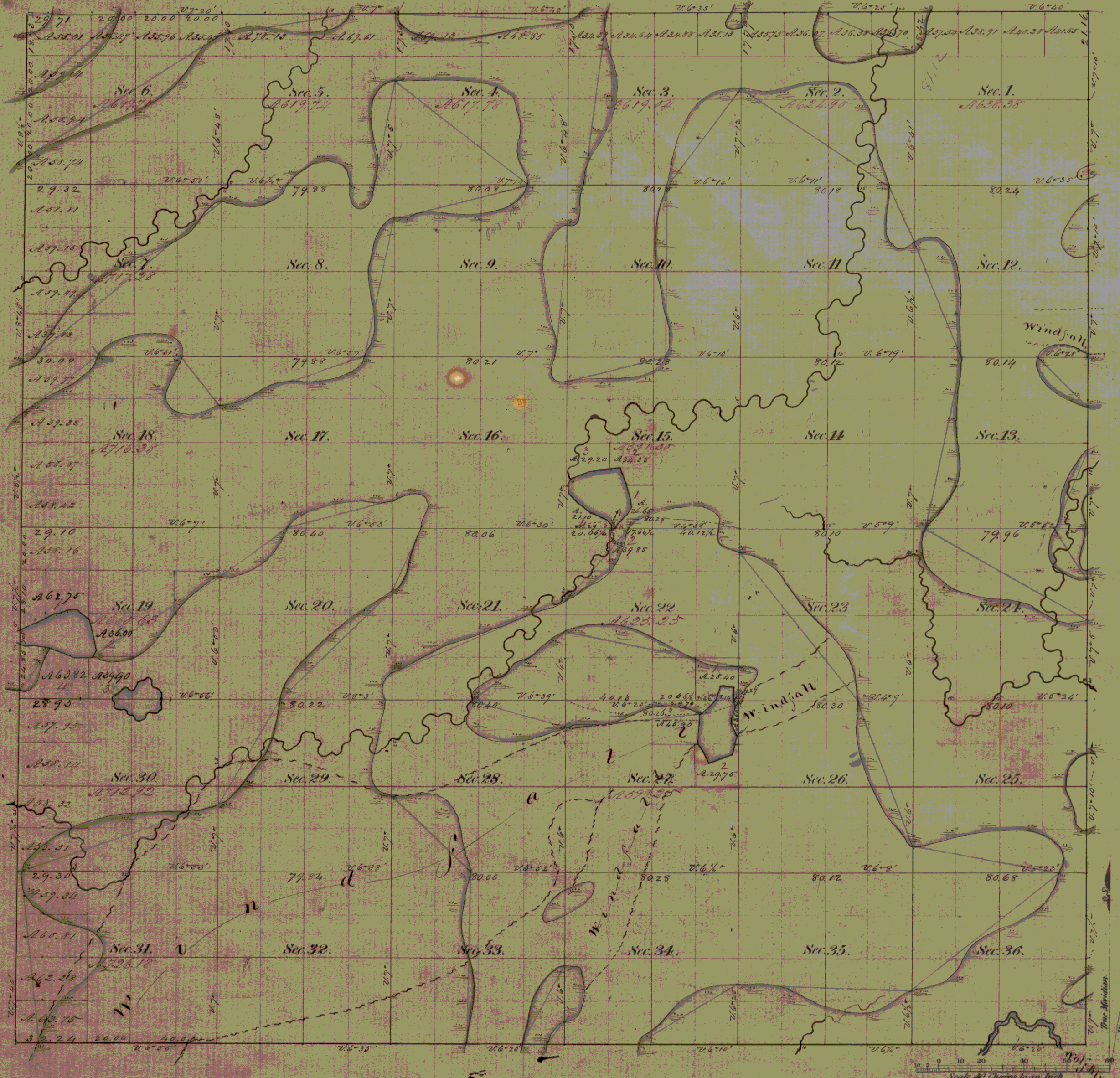


Township N<sup>o</sup> 36 N; Range N<sup>o</sup> 11 East 4<sup>th</sup> Mer.

Township N<sup>o</sup> 36 N; Range N<sup>o</sup> 11 East 4<sup>th</sup> Mer.



*Meanders of Lake in Sec 22, 27 beginning on East Side.*

Posts	Courses	Ch. Lk.	Posts	Courses	Ch. Lk.	Posts	Courses	Ch. Lk.
1	North	6.01						
	N. 85 <sup>o</sup> W.	6.20						
2	S. 15 <sup>o</sup> W.	6.69						
	S. 51 <sup>o</sup> W.	1.50						
	S. 57 <sup>o</sup> W.	13.55						
	S. 29 <sup>o</sup> E.	11.70						
	N. 71 <sup>o</sup> E.	11.50						
	N. 25 <sup>o</sup> E.	9.50						
	N. 25 <sup>o</sup> W.	6.50						
	N. 10 <sup>o</sup> E.	7.50						
1	N. 10 <sup>o</sup> W.	3.41						
<i>Lake in Sec 15, 22</i>								
3	N. 15 <sup>o</sup> W.	2.00						
	N. 32 <sup>o</sup> W.	3.50						
	N. 47 <sup>o</sup> W.	8.50						
	N. 27 <sup>o</sup> E.	7.00						
	N. 40 <sup>o</sup> W.	6.50						
	N. 7 <sup>o</sup> W.	3.10						
	N. 21 <sup>o</sup> E.	2.10						
	N. 68 <sup>o</sup> E.	9.50						
	N. 78 <sup>o</sup> E.	11.50						
	S. 19 <sup>o</sup> E.	12.00						
	S. 8 <sup>o</sup> E.	8.00						
	S. 28 <sup>o</sup> W.	4.00						
4	S. 12 <sup>o</sup> W.	8.77						
	S. 48 <sup>o</sup> W.	1.40						
3	N. 9 <sup>o</sup> W.	.80						
<i>Lake in Sec. 19</i>								
5	S. 3 <sup>o</sup> E.	2.00						
	N. 25 <sup>o</sup> E.	3.50						
	S. 78 <sup>o</sup> E.	5.50						
	S. 71 <sup>o</sup> E.	12.50						
	N. 87 <sup>o</sup> E.	2.50						
	N. 26 <sup>o</sup> E.	4.50						
	N. 12 <sup>o</sup> W.	11.50						
	N. 53 <sup>o</sup> W.	7.50						
	S. 81 <sup>o</sup> W.	11.00						
6	S. 87 <sup>o</sup> W.	15.00						
<i>Mis. Ch. Lakes</i>								
<i>Total</i>		<i>3. 27. 27</i>						

Total number of Acres 222,487.4

Surveys Designated.	By Whom Surveyed	Date of Contract.	Amount of Surveys M. Ch. Lk.	When Surveyed.	When Changed in the Sur. Gen. Rec!
Township lines.	Ho. C. Bellows	13 May 1859	18. 20. 68	July 1859	
	Alfred Millard	June 30th 1859	6. 01. 16	May 1858	
Subdivisions.	Wm. C. Deane	13th May 1859	63. 57. 10	July & Aug. 1859	

The above Map of Township N<sup>o</sup> 36 North of Range N<sup>o</sup> 11 East 4<sup>th</sup> Principal Meridian Wisconsin is strictly conformable to the field notes of the survey thereof on file in this Office which have been examined and approved.

Surveyor General's Office  
Dubuque July 14th 1860

*Warner*  
Sur. Gen.