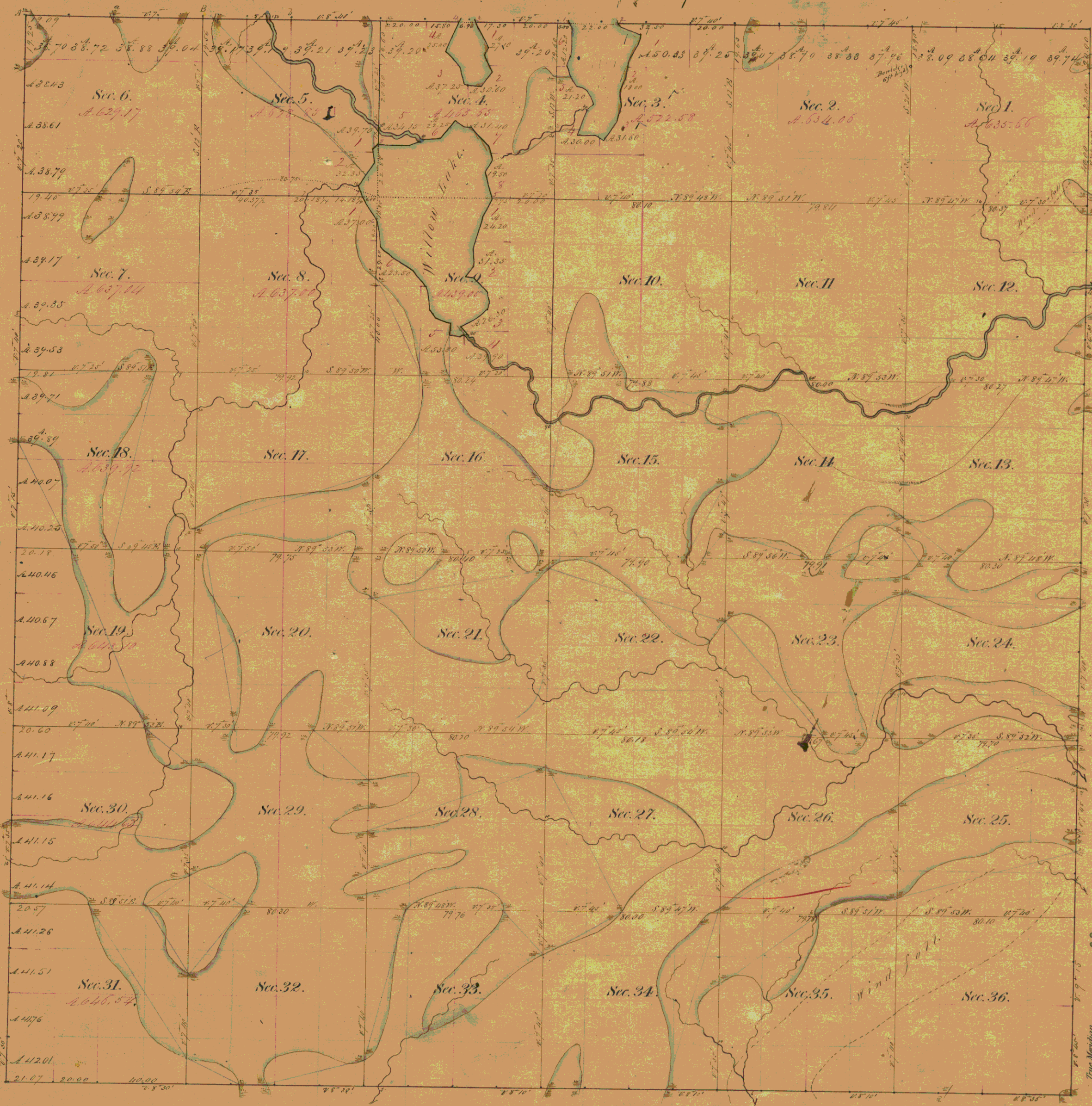


Township N^o 37 N. Range N^o 4 East of the 4th Mer.



Total number of Acres 22425.24

Surveys Designated.	By Whom Surveyed	Date of Contract.	Amount of Surveys M. Ch ^s Lk ^s	When Surveyed.	When Changed in the Sur. Gen ^l Acc ^t
Township lines.	Alex. Anderson	August 1st 1850	17 " 79 " 00	July 1854	
"	Alex. Millard	August 28 th 1850	6 " 07 " 00	Sept 1850	
Subdivisions.	Ed. O. Palmer	Sept. 14 th 1854	64 " 65 " 31	October 1854	

The above Map of Township N^o 37 North of Range N^o 4 East of the 4th Principal Meridian State of Wisconsin is strictly conformable to the field notes of the survey thereof on file in this Office which have been examined and approved.
 Surveyor General's Office
 Dubuque January 5th 1855
 Henry A. Hiltse
 Sur. Gen.

Meaders of Lakes.											
Posts	Courses	Ch ^s Lk ^s	Posts	Courses	Ch ^s Lk ^s	Posts	Courses	Ch ^s Lk ^s	Posts	Courses	Ch ^s Lk ^s
South end of Lake Sec. 3.			N. 80 E. 12.00								
			N. 21 E. 8.57								
1	S. 10 E.	4.00									
			S. 74 E. 6.00								
			S. 16 W. 4.00								
			S. 15 E. 5.00								
			S. 44 E. 5.57								
			S. 61 E. 4.11								
			S. 16 E. 6.50								
			S. 47 W. 3.30								
			S. 27 E. 11.50								
			S. 70 E. 5.00								
			N. 40 E. 12.00								
			N. 10 E. 5.00								
			N. 15 E. 7.50								
			N. 10 E. 12.00								
			N. 70 W. 5.50								
			N. 63 W. 3.70								
			Total			5 78 10					
Part of Lake Sec. 4											
			S. 20 E. 8.00								
			S. 24 E. 5.00								
			South								
			S. 20 E. 9.50								
			S. 30 W. 8.00								
			N. 80 W. 8.50								
			N. 18 W. 8.00								
			N. 40 W. 5.50								
			N. 14 W. 4.50								
			N. 24 E. 14.50								
Willow Lake.											
			S. 30 W. 8.50								
			S. 12 W. 14.75								
			South								
			S. 26 W. 6.40								
			S. 85 E. 2.00								
			S. 55 E. 8.00								
			S. 10 E. 4.50								
			S. 27 W. 3.00								
			S. 45 W. 10.00								
			S. 55 W. 4.50								
			S. 35 E. 3.00								
			S. 70 W. 2.45								
			N. 80 E. 5.15								
			North								
			N. 77 W. 7.00								
			N. 35 W. 3.00								
			N. 25 W. 9.00								
			N. 35 W. 10.20								
			N. 50 W. 13.50								
			N. 45 E. 4.50								
			N. 8 W. 10.50								
			N. 27 W. 12.00								
			N. 15 W. 6.25								
			N. 40 E. 10.25								
			N. 10 W. 7.00								
			N. 40 E. 3.00								
			S. 80 E. 13.00								
			N. 70 E. 6.00								