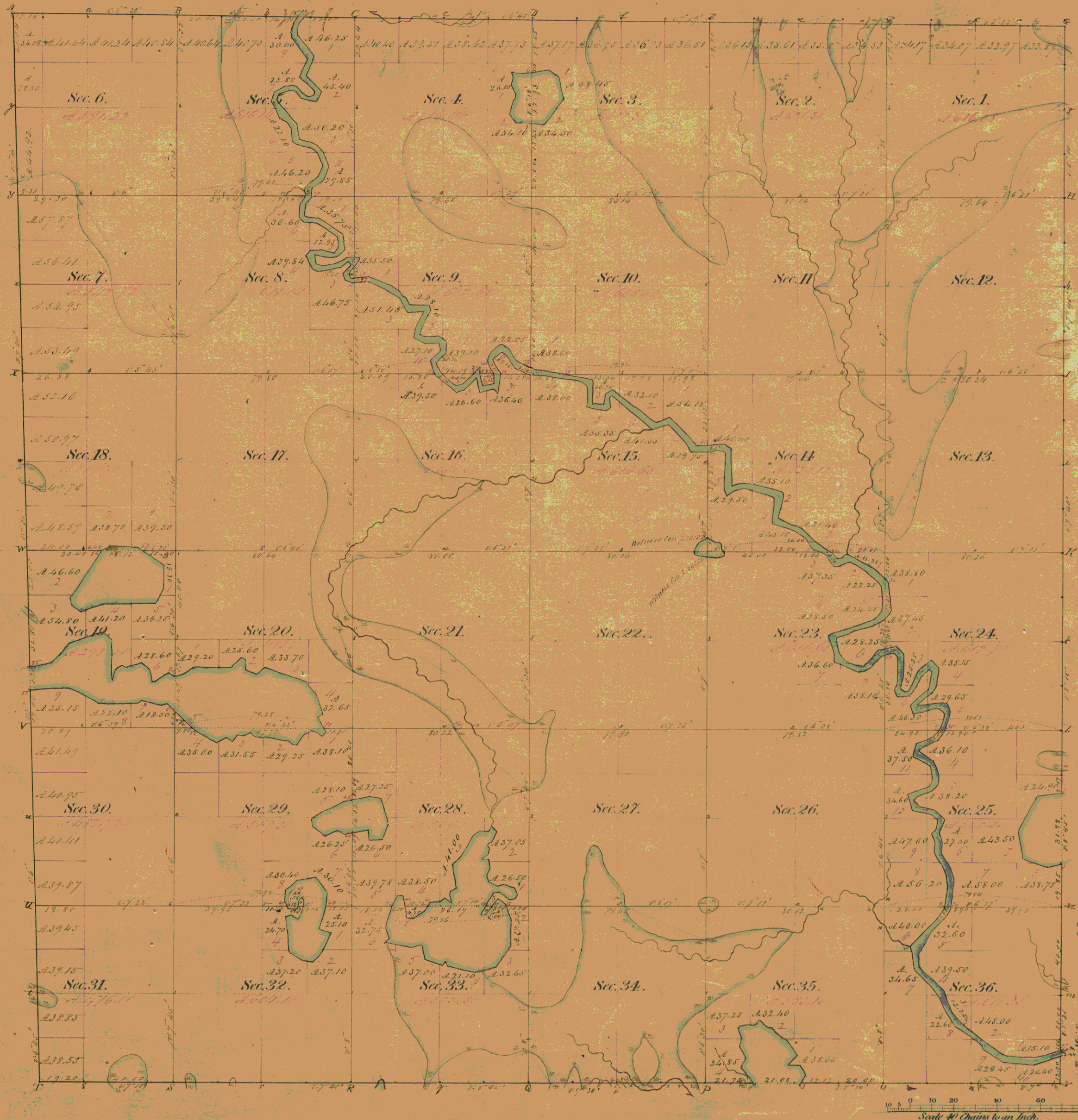


Township N<sup>o</sup> 37 N. Range N<sup>o</sup> 8 East of the 4<sup>th</sup> Mer.

37<sup>th</sup> N. 8<sup>th</sup> E. 4<sup>th</sup> Mer. W. C. Daugherty, Dep. Gen. S.



Total number of Acres 21,177.40

Posts	Courses	Ch. <sup>s</sup> Lk. <sup>s</sup>	Posts	Courses	Ch. <sup>s</sup> Lk. <sup>s</sup>	Posts	Courses	Ch. <sup>s</sup> Lk. <sup>s</sup>
1.	1.01	1.00	21.21	1.00	20.52	21.00		
			26.49	2.50	8.54	21.40		
			41.11	3.40	5.46	41.00		
3	14	14.00	42.54	3.50	5.51	33.50		
			48.04	5.00	4.81	47.00		
			49.27	5.00	4.77	49.00		
			50.50	5.00	4.73	49.50		
			51.73	5.00	4.69	50.00		
			52.96	5.00	4.65	51.50		
			54.19	5.00	4.61	53.00		
			55.42	5.00	4.57	54.50		
			56.65	5.00	4.53	56.00		
			57.88	5.00	4.49	57.50		
			59.11	5.00	4.45	59.00		
			60.34	5.00	4.41	60.50		
			61.57	5.00	4.37	62.00		
			62.80	5.00	4.33	63.50		
			64.03	5.00	4.29	65.00		
			65.26	5.00	4.25	66.50		
			66.49	5.00	4.21	68.00		
			67.72	5.00	4.17	69.50		
			68.95	5.00	4.13	71.00		
			70.18	5.00	4.09	72.50		
			71.41	5.00	4.05	74.00		
			72.64	5.00	4.01	75.50		
			73.87	5.00	3.97	77.00		
			75.10	5.00	3.93	78.50		
			76.33	5.00	3.89	80.00		
			77.56	5.00	3.85	81.50		
			78.79	5.00	3.81	83.00		
			80.02	5.00	3.77	84.50		
			81.25	5.00	3.73	86.00		
			82.48	5.00	3.69	87.50		
			83.71	5.00	3.65	89.00		
			84.94	5.00	3.61	90.50		
			86.17	5.00	3.57	92.00		
			87.40	5.00	3.53	93.50		
			88.63	5.00	3.49	95.00		
			89.86	5.00	3.45	96.50		
			91.09	5.00	3.41	98.00		
			92.32	5.00	3.37	99.50		
			93.55	5.00	3.33	101.00		
			94.78	5.00	3.29	102.50		
			96.01	5.00	3.25	104.00		
			97.24	5.00	3.21	105.50		
			98.47	5.00	3.17	107.00		
			99.70	5.00	3.13	108.50		
			100.93	5.00	3.09	110.00		
			102.16	5.00	3.05	111.50		
			103.39	5.00	3.01	113.00		
			104.62	5.00	2.97	114.50		
			105.85	5.00	2.93	116.00		
			107.08	5.00	2.89	117.50		
			108.31	5.00	2.85	119.00		
			109.54	5.00	2.81	120.50		
			110.77	5.00	2.77	122.00		
			112.00	5.00	2.73	123.50		
			113.23	5.00	2.69	125.00		
			114.46	5.00	2.65	126.50		
			115.69	5.00	2.61	128.00		
			116.92	5.00	2.57	129.50		
			118.15	5.00	2.53	131.00		
			119.38	5.00	2.49	132.50		
			120.61	5.00	2.45	134.00		
			121.84	5.00	2.41	135.50		
			123.07	5.00	2.37	137.00		
			124.30	5.00	2.33	138.50		
			125.53	5.00	2.29	140.00		
			126.76	5.00	2.25	141.50		
			127.99	5.00	2.21	143.00		
			129.22	5.00	2.17	144.50		
			130.45	5.00	2.13	146.00		
			131.68	5.00	2.09	147.50		
			132.91	5.00	2.05	149.00		
			134.14	5.00	2.01	150.50		
			135.37	5.00	1.97	152.00		
			136.60	5.00	1.93	153.50		
			137.83	5.00	1.89	155.00		
			139.06	5.00	1.85	156.50		
			140.29	5.00	1.81	158.00		
			141.52	5.00	1.77	159.50		
			142.75	5.00	1.73	161.00		
			143.98	5.00	1.69	162.50		
			145.21	5.00	1.65	164.00		
			146.44	5.00	1.61	165.50		
			147.67	5.00	1.57	167.00		
			148.90	5.00	1.53	168.50		
			150.13	5.00	1.49	170.00		
			151.36	5.00	1.45	171.50		
			152.59	5.00	1.41	173.00		
			153.82	5.00	1.37	174.50		
			155.05	5.00	1.33	176.00		
			156.28	5.00	1.29	177.50		
			157.51	5.00	1.25	179.00		
			158.74	5.00	1.21	180.50		
			159.97	5.00	1.17	182.00		
			161.20	5.00	1.13	183.50		
			162.43	5.00	1.09	185.00		
			163.66	5.00	1.05	186.50		
			164.89	5.00	1.01	188.00		
			166.12	5.00	0.97	189.50		
			167.35	5.00	0.93	191.00		
			168.58	5.00	0.89	192.50		
			169.81	5.00	0.85	194.00		
			171.04	5.00	0.81	195.50		
			172.27	5.00	0.77	197.00		
			173.50	5.00	0.73	198.50		
			174.73	5.00	0.69	200.00		
			175.96	5.00	0.65	201.50		
			177.19	5.00	0.61	203.00		
			178.42	5.00	0.57	204.50		
			179.65	5.00	0.53	206.00		
			180.88	5.00	0.49	207.50		
			182.11	5.00	0.45	209.00		
			183.34	5.00	0.41	210.50		
			184.57	5.00	0.37	212.00		
			185.80	5.00	0.33	213.50		
			187.03	5.00	0.29	215.00		
			188.26	5.00	0.25	216.50		
			189.49	5.00	0.21	218.00		
			190.72	5.00	0.17	219.50		
			191.95	5.00	0.13	221.00		
			193.18	5.00	0.09	222.50		
			194.41	5.00	0.05	224.00		

Total number of Acres 21,177.40						
Surveys Designated.	By Whom Surveyed	Date of Contract	Amount of Surveys M. Ch. <sup>s</sup> Lk. <sup>s</sup>	When Surveyed.	When Changed in the Sur. Gen.'s Acc't	
N. S. W.	Township lines.	Alfred Willard August 8th 1850	17 - 57 - 40	5th Aug. 1860		
" "	" "	W. C. Daugherty May 13th 1859	5 - 76 - 32	July 1859		
" "	Subdivisions.	W. C. Daugherty June 22d 1863	95 - 57 - 51	July 1863		

The above Map of Township N<sup>o</sup> 37 North of Range N<sup>o</sup> 8 East of the 4<sup>th</sup> Principal Meridian State of Wisconsin is strictly conformable to the field notes of the survey thereof on file in this Office which have been examined and approved.

Surveyor General's Office  
Dubuque March 15th 1864

Kenny A. Wittze  
Sur. Gen.