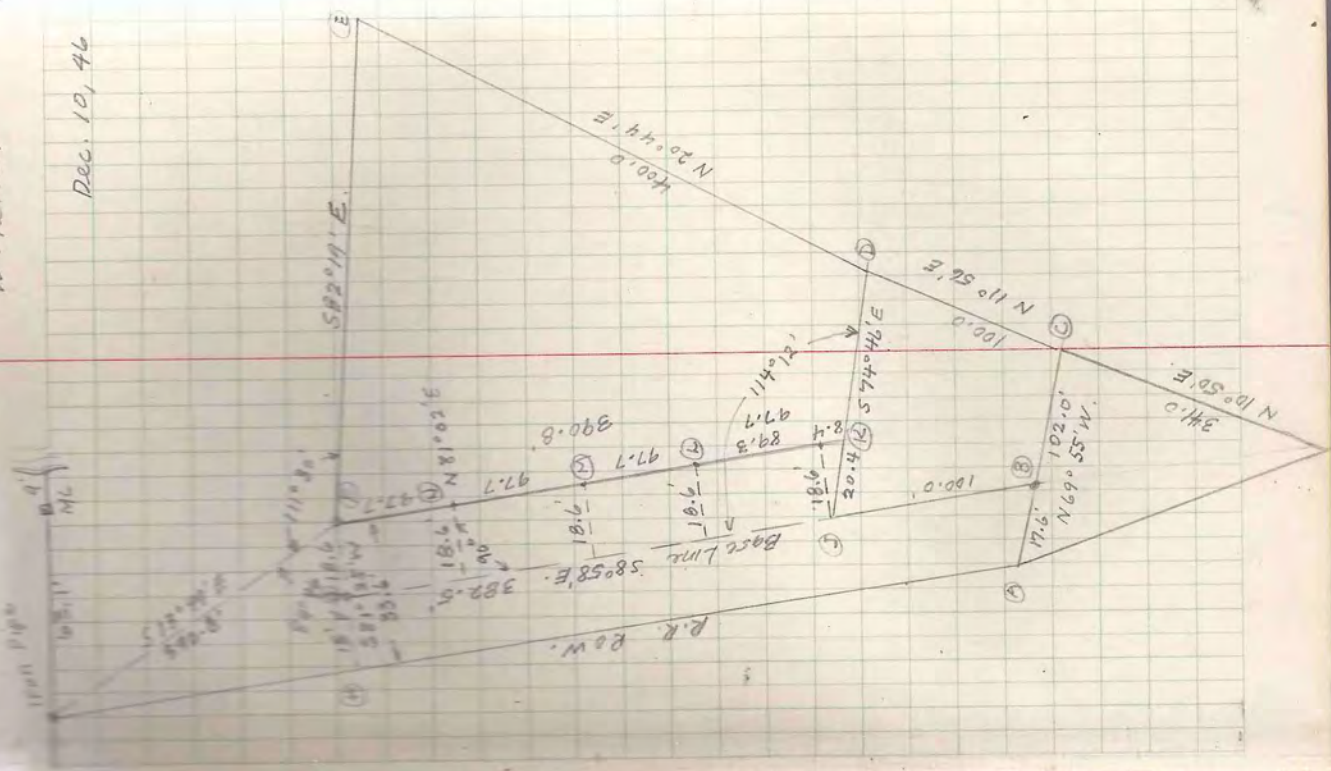


W. Yelton

Dec. 19, 46



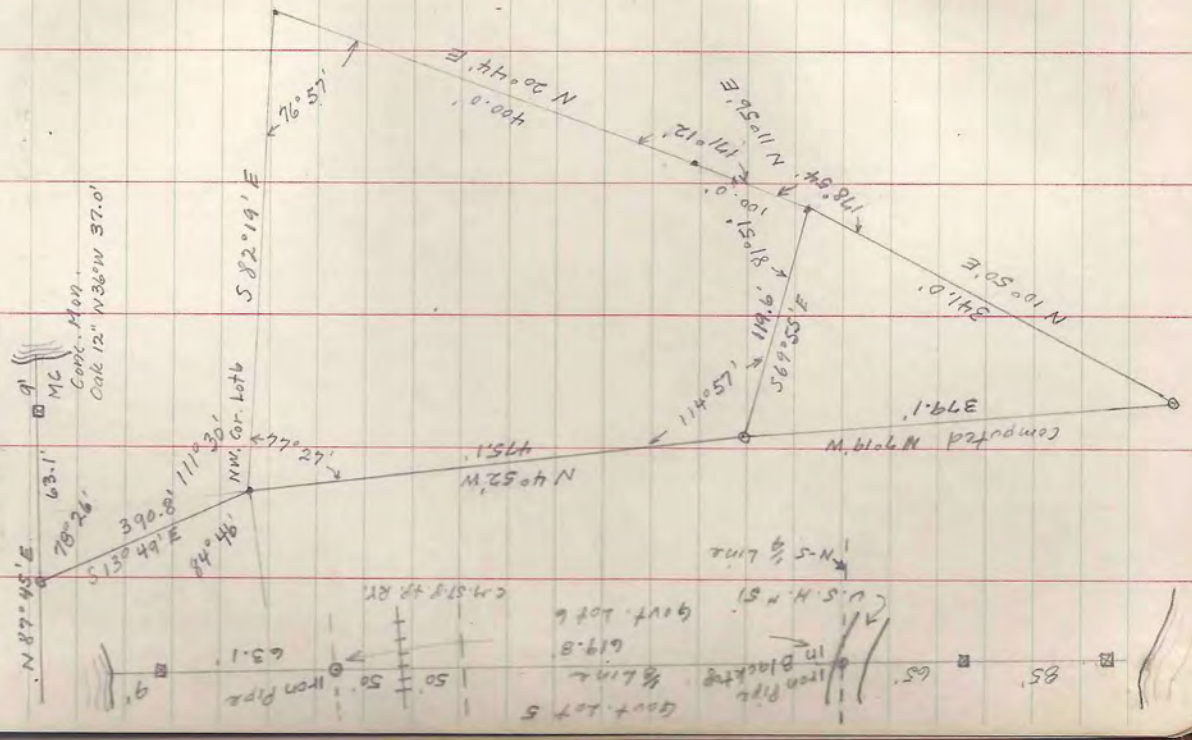
SEC. 11, T39N-R6E

Part of Govt Lot 5 lying East of

Dec. 19, 46

W. YELTON

C.M. ST. P&P. RY CO., R.O.W.

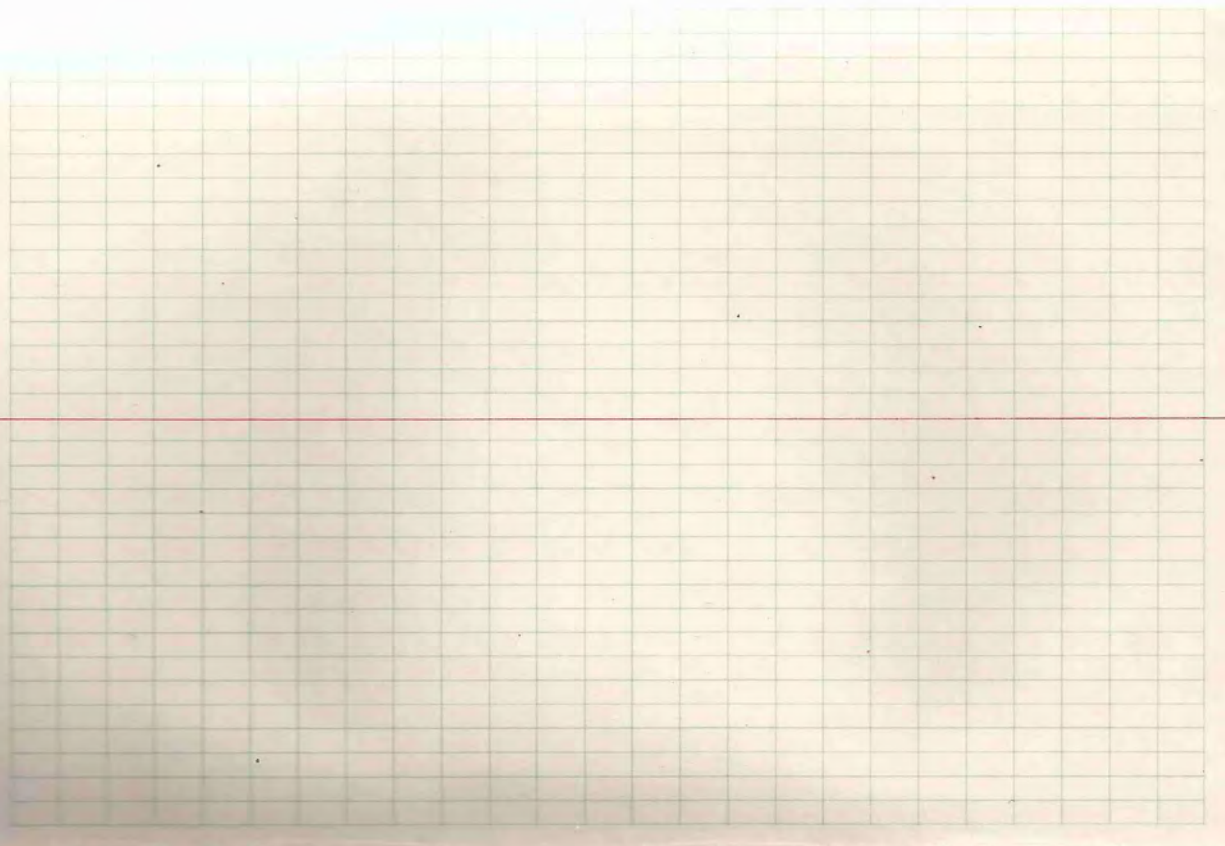


G. Cross Lake Tomahawk
SEC. 9, T. 38N-R. 7E.

To locate c/q and determine original
location

SEC. 9, T. 38N-R. 7E

4



Grey -

Dec. 30' 1946

Running out West Line Sec. 10

Set hub in road at corner to 3-4-9-10

Found iron pipe at N $\frac{1}{8}$

BT. Stp.

Found old rotted wood post on ground
at N $\frac{1}{4}$

Squaw Lake,
SEC. 10, T39N-R4E.

Arthur Youngberg

Sec. 1 T. 38N. R. 6E. Jan 15 20'41

Found Dorr's & Vaughans
W. Pine 20" N20E. 21.3 FT. (origin unknown)
D.M.V. W. Birch 10" N41W 28.1kts.

Found Vaughans E 1/2 - S. 2m. Sec 1
W. Pine Stp. 18" S20E 12.1kts.
P. Pine Stp. 16" N56 1/2 W. 28.1kts.

Prolonged line East and found Pine Stp.
down, partly buried in ground. Upward and
found marks "Sec 12 BT." Found roots of

Stub and set it in place. S53W. 11.5 FT.
West Arm Stp. Found iron Pipe for
Cor. Sec. 1-2-1-12. Oak 8" S76E. 20.6 FT.

Oak 6" S74W 18.3 FT.
North from Sec. Cor. Found iron pipe
at approx. 1/2 Sec. 1 No. 87's.

Found D.H.V. "MC" on south side Tomahawk
Lake, on North end of N-S by line thru
SE 1/4. Y Pine Stp. 8" S70E. 16 kts. Part

at two other Stps. which are larger.
& both Pine.

Found 48" Pine Stp. at approx. E 1/2
Sec. 1 Distance betw. SE. Sec. Cor. &

Theo. 1/4 Cor. falls within 3 FT. of Vaughans
measure ment.
(Russ Swanson & Fred Sindberg. Aucts.)

Arthur Youngberg

Sec. 1, T. 38N. R. 6E.

Found two Stps (Dorr's) on south shore Tomahawk
which closely fit. Baring's + distances for MC on East
line of Sec. 1 (Range line) corner falls in lake.
Set temp. Stp. on E. line. Sec. 1 and found two pine Stps.
badly rotted + buried which closely fit Vaughans W. Pine Stp. as
and W. Pine 6" S10W. 39kts.

Selected temporary points for Dorr's center 1/2 and 1/8
between 5 1/2 S.
At temp. 1/4 found 18" W. Pine which checks with Dorr's
distance from 5 1/2 S. could find no marks on tree except large black
on North side. Gold had runs NE + SW 15 FT. South of tree
Vaughans record of 1905 indicates that he found Dorr's
W. Pine 7" N10W 9 1/2 kts. and that Dorr's Norway Pine 8"
560kts. 2 1/2 kts. was grubbed out for a road.

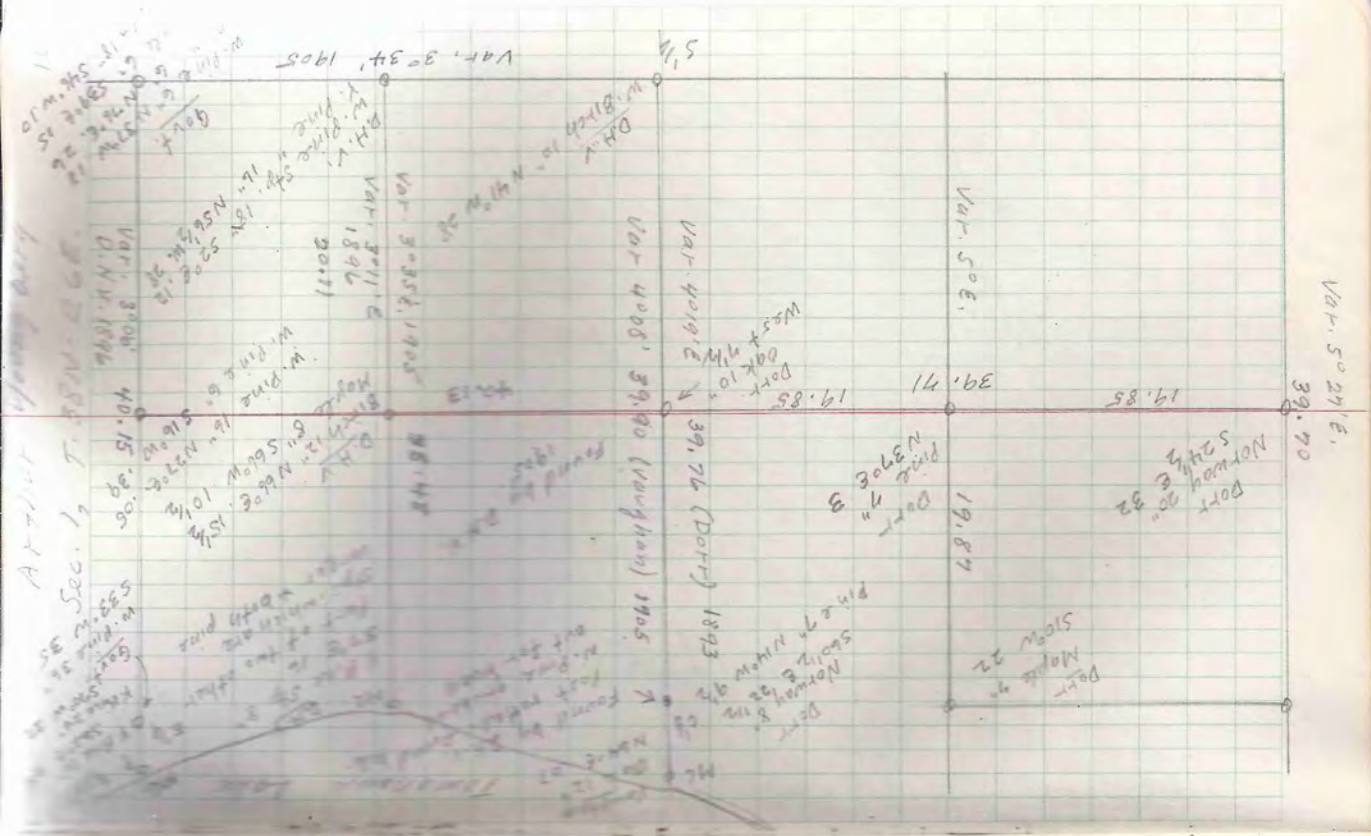
At temp. 1/8 betw. 5 1/2 S. found oak stub badly rotted -
no marks which closely fit Dorr's 10" Oak - West 7 1/2 kts.
At temp. Mc. on N-S 1/4 line found 16" Oak (No marks
visible except flat spot at base) which fits Vaughans
12" Oak. N64E. 07 Distance from temp. 1/4 to temp. Mc.
is 3.8 kts. Vaughans record indicates 3.18 kts.

These points line in within a few links. Found several
old blazes along line.
Dorr does not state how he set the C.P. as recorded, do
not agree.

Vaughans record of his work in the SE 1/4 Sec. 1 indicates
that
1 - The variations for the N-S 1/4 - 1/8 - 1/4 section line increase
between the East section line and the W. North. But, the record
E-W distances decrease from South to North.

Assumed that the three variations would be correct and
the one distance could be incorrect.

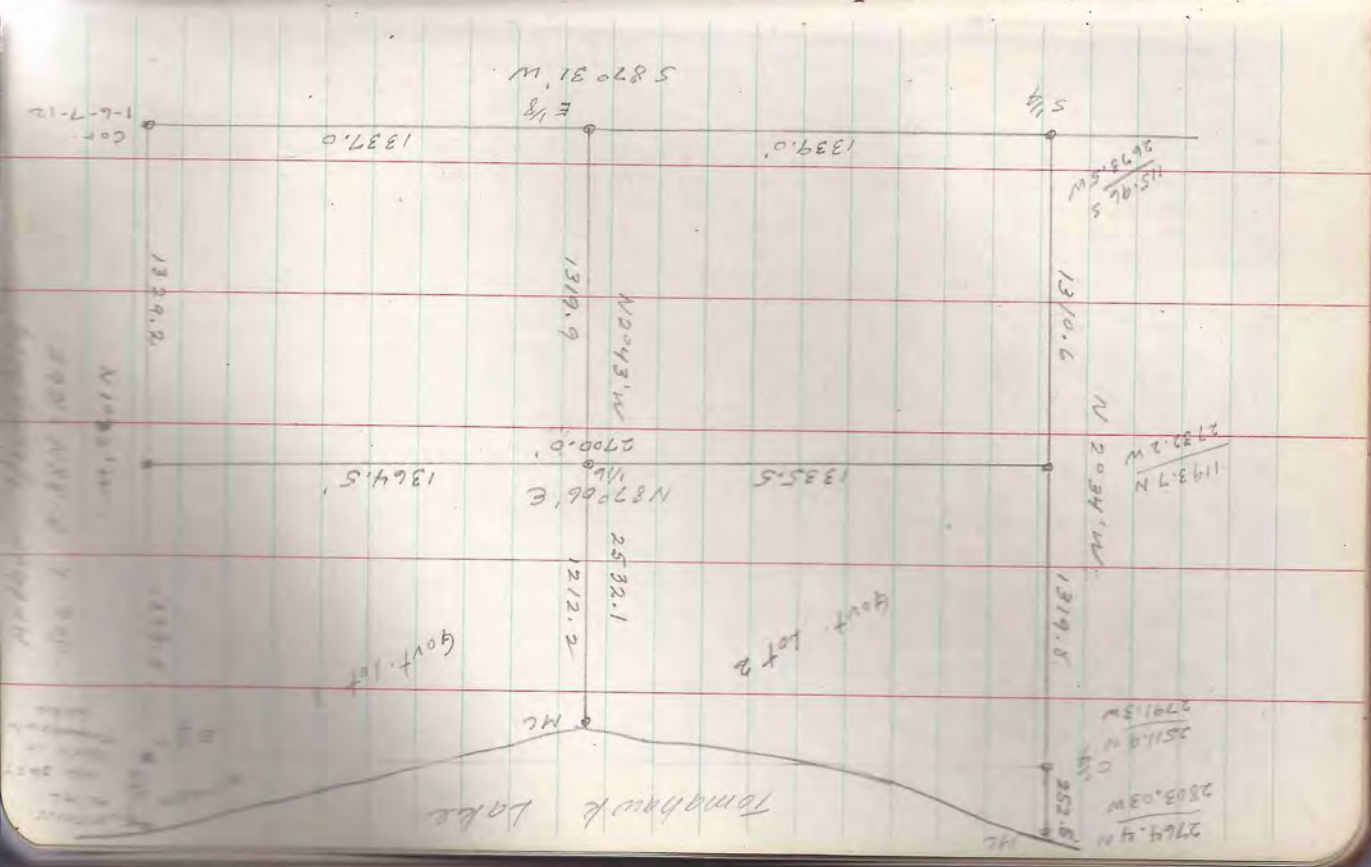
(over)



Arthur...
 Sec. 1, T. 85N. R. 6E.
 19 SE 1/4 did not run at a correct mean
 between the East Sec. line and N-S 1/4
 line. Found approx. 10' difference in
 magnetic attraction in that area and
 assumed that to cause the difference.
 Did not find the 1/2 in SE 1/4. Set
 temp. 1/2 on "line below 1/2 in SE 1/4."
 Distance North from 1/2 is 20.01.
 Vaughans Reed indicator distance
 to be 20.11. Believe temp. points to be
 very close to original points.
 See later notes for setting of
 permanent points.
 (Russ Swenson & Fred Sindberg, Aorts)

13
Jan 20-25, 1947
D.H. Vaughan and Port Records do not agree in variations of measurements.

Prolonged line from 5/8 then E 1/2 double distance = 2764.44
Hub, Found old pine stub BT marked sec 12, sec 11. Found roots + set stub in place. adjusted distance 275
My distance 5 kts. less than B.H.V.'s record. D.H.V. distance sec. 12
Found 48" pine stump + set temp. 1/4. D.H.V. distance sec. 11
to E 1/2 40.15. My distance - 40.24. found remains of two pine
stumps at 5/8 + 1/8. sec. line - believe to be D.H.V. Found two holes in
ground. set permanent 1/4 and 1/8. Found two stumps. at shore of
Tamahaug Lake. adjusted line slightly to East + set witness
corner to H.C. in lake. Govt. Dist. 40.00 + 8.00 = 48.00
My distance 40.24 + 7.64 = 47.88
Used temp. 1/8 + 1/2 betw. 5/8, 1/2. Set 1/6 at intersection
of set M on N-S 1/8 line in SE 1/4.
Vaughan's stamps -
Difference in bearing of my N-S 1/4 line and East sec. line
is + 1002'. Difference in bearing of same lines according
to B.H.V. record is + 1002'.
Can not check D.H.V. bearing on N-S 1/4 line. Record calls for
30.35' E. Var. 1905 - corrected to date would be 1029' E. Var.
My Var. 2042' E.
There are considerable differences in magnetic variations
in this area.
D.H. Vaughan and Port Records do not agree in variations
of measurements.



sector property
 100' x 100' P. 100' x 100'.
 Found old iron pipe and old Pine Stub
 BT could not determine original position
 of original BT.
 1/4 Cor.

Found Two old Pine Stps. BT's

Old post in fence line Set new

Oak Post in old post hole.

Pine Stp. 546°W. 5.4'

" 540°E. 19.9'

1/2 Btw. W 1/4 S.

Found old post hole south of fence

corner. Old Pine Stp. BT. Set new

Oak Post in hole.

Pine Stp. - N 71° W - 4.9'

1/2 Btw. E 1/4 S.

Found old post lying on ground

south of fence corner. Old Pine Stp. BT

Set new Oak Post

30° Pine Stp. N 40° W. 15 FT.

E 1/4 Cor.

Prolonged E. W. 1/4 line from W 1/4

thru C 1/4 and 1/8 corners, all corners being

on line, and doubled distance from C 1/4

to 1/2 Btw. E 1/4 S. Found trace of

wood at theoretical location but could

not positively identify remains of post. Did not find
 Road has been improved at this point and bearings have been
 been grubbed out. Accepted this point to conform with work
 originally put in Sec. 12. Found a pine BT for a 1/4 cor.
 52 ft. south. This location does not conform to the original
 work done in Sec. 12 and is of recent date by comparison.
 This point is 40 ch. North of Sec. Cor. 7-12-13-18. At 20 ch. North
 found wood stake + iron rod on line with 1/4. This point also does
 not conform to original work in Sec. 12.
 At Sec. Cor. 7-12-13-18 found Pine Post. and Pine BT. This point
 conforms with original work south on Range line. Old post.
 At 5 1/4 cor. found old post hole and remains of old post.
 Old Pine Stp. BT marked 1/5. Set oak post in old hole.
 Pine Stp. BT 5
 At Sec. Cor. 11-12-13-14 found 2" iron pipe in south wheel
 track of dump road. Witnesses verify point as being correct.
 Subdivided 5/2 of Sec. 12 using about original points.
 Set posts and marked BT's at all corners - brushed
 and dinged tree marks.
 Ignored 40 ch. + 20 ch. points on E. line of Sec. 12 as
 they did not fit original work in this section. Govt. marked
 W. Bitch + B. oak BT's for the E 1/4 of Sec. 12. 50 yoch. point can
 not be original. There is a considerable overage in
 distance from Sec. Cor. 7-12-13-18 to Mt. of Tom. Lake. 50
 ft is possible that 40 + 20 ch. points (which fit Govt. measure)
 are short. Did not find any extensive development from
 these comparatively new points.

Sec. 12 - T.38N. R.6E

March 2, 1947

Sec. 12

References

1-18-18
1-19-18
1-20-18
1-21-18
1-22-18
1-23-18
1-24-18
1-25-18
1-26-18
1-27-18
1-28-18
1-29-18
1-30-18
1-31-18
2-1-18
2-2-18
2-3-18
2-4-18
2-5-18
2-6-18
2-7-18
2-8-18
2-9-18
2-10-18
2-11-18
2-12-18
2-13-18
2-14-18
2-15-18
2-16-18
2-17-18
2-18-18
2-19-18
2-20-18
2-21-18
2-22-18
2-23-18
2-24-18
2-25-18
2-26-18
2-27-18
2-28-18
2-29-18
2-30-18
2-31-18
3-1-18
3-2-18
3-3-18
3-4-18
3-5-18
3-6-18
3-7-18
3-8-18
3-9-18
3-10-18
3-11-18
3-12-18
3-13-18
3-14-18
3-15-18
3-16-18
3-17-18
3-18-18
3-19-18
3-20-18
3-21-18
3-22-18
3-23-18
3-24-18
3-25-18
3-26-18
3-27-18
3-28-18
3-29-18
3-30-18
3-31-18
4-1-18
4-2-18
4-3-18
4-4-18
4-5-18
4-6-18
4-7-18
4-8-18
4-9-18
4-10-18
4-11-18
4-12-18
4-13-18
4-14-18
4-15-18
4-16-18
4-17-18
4-18-18
4-19-18
4-20-18
4-21-18
4-22-18
4-23-18
4-24-18
4-25-18
4-26-18
4-27-18
4-28-18
4-29-18
4-30-18
4-31-18
5-1-18
5-2-18
5-3-18
5-4-18
5-5-18
5-6-18
5-7-18
5-8-18
5-9-18
5-10-18
5-11-18
5-12-18
5-13-18
5-14-18
5-15-18
5-16-18
5-17-18
5-18-18
5-19-18
5-20-18
5-21-18
5-22-18
5-23-18
5-24-18
5-25-18
5-26-18
5-27-18
5-28-18
5-29-18
5-30-18
5-31-18
6-1-18
6-2-18
6-3-18
6-4-18
6-5-18
6-6-18
6-7-18
6-8-18
6-9-18
6-10-18
6-11-18
6-12-18
6-13-18
6-14-18
6-15-18
6-16-18
6-17-18
6-18-18
6-19-18
6-20-18
6-21-18
6-22-18
6-23-18
6-24-18
6-25-18
6-26-18
6-27-18
6-28-18
6-29-18
6-30-18
6-31-18
7-1-18
7-2-18
7-3-18
7-4-18
7-5-18
7-6-18
7-7-18
7-8-18
7-9-18
7-10-18
7-11-18
7-12-18
7-13-18
7-14-18
7-15-18
7-16-18
7-17-18
7-18-18
7-19-18
7-20-18
7-21-18
7-22-18
7-23-18
7-24-18
7-25-18
7-26-18
7-27-18
7-28-18
7-29-18
7-30-18
7-31-18
8-1-18
8-2-18
8-3-18
8-4-18
8-5-18
8-6-18
8-7-18
8-8-18
8-9-18
8-10-18
8-11-18
8-12-18
8-13-18
8-14-18
8-15-18
8-16-18
8-17-18
8-18-18
8-19-18
8-20-18
8-21-18
8-22-18
8-23-18
8-24-18
8-25-18
8-26-18
8-27-18
8-28-18
8-29-18
8-30-18
8-31-18
9-1-18
9-2-18
9-3-18
9-4-18
9-5-18
9-6-18
9-7-18
9-8-18
9-9-18
9-10-18
9-11-18
9-12-18
9-13-18
9-14-18
9-15-18
9-16-18
9-17-18
9-18-18
9-19-18
9-20-18
9-21-18
9-22-18
9-23-18
9-24-18
9-25-18
9-26-18
9-27-18
9-28-18
9-29-18
9-30-18
9-31-18
10-1-18
10-2-18
10-3-18
10-4-18
10-5-18
10-6-18
10-7-18
10-8-18
10-9-18
10-10-18
10-11-18
10-12-18
10-13-18
10-14-18
10-15-18
10-16-18
10-17-18
10-18-18
10-19-18
10-20-18
10-21-18
10-22-18
10-23-18
10-24-18
10-25-18
10-26-18
10-27-18
10-28-18
10-29-18
10-30-18
10-31-18
11-1-18
11-2-18
11-3-18
11-4-18
11-5-18
11-6-18
11-7-18
11-8-18
11-9-18
11-10-18
11-11-18
11-12-18
11-13-18
11-14-18
11-15-18
11-16-18
11-17-18
11-18-18
11-19-18
11-20-18
11-21-18
11-22-18
11-23-18
11-24-18
11-25-18
11-26-18
11-27-18
11-28-18
11-29-18
11-30-18
11-31-18
12-1-18
12-2-18
12-3-18
12-4-18
12-5-18
12-6-18
12-7-18
12-8-18
12-9-18
12-10-18
12-11-18
12-12-18
12-13-18
12-14-18
12-15-18
12-16-18
12-17-18
12-18-18
12-19-18
12-20-18
12-21-18
12-22-18
12-23-18
12-24-18
12-25-18
12-26-18
12-27-18
12-28-18
12-29-18
12-30-18
12-31-18

NW 1/4
Sec. 12

New BT. 5.

K. Pine 8" N 38°W 40.3' K. Pine 4" S 75°W 32.2'
New BT. 5. Did not find old BT's. or Post.

Sec. 12

Oak 5" S 22°E 14.8' - Oak 7" S 76°W 42.0'

S 1/4
Sec. 12Old Pine 5 1/2" BT. South 25.4'
New - Oak PostL 1/4
Sec. 12Oak 9" S 19°W 17.6'
Oak 7" N 79°E 18.8'
Old BT. 5 - Pine 5 1/2" S 46°W 5.4'
" " " 5 40°E 19.9'1/8 Betw
E 1/4 S.New Oak Post
Birch 7" S 22°E 6.2' - Maple 4" N 84°E 29.0'
Old BT. 5 - 30" Pine 5 1/2" N 40°W 15.0'
New Oak Post1/8 Betw
W 1/4 S.Oak 5" N 57°W 17.5'
Oak 6" N 58°E 24.5'
Fence Corner
Old Pine 5 1/2" (Old BT.) N 71°W 4.9'
New Oak PostS 1/8
E 1/4
W 1/8
S. 20.
S 1/4 S. 12
S 1/4 S. 12
SE 1/4 1/2
SW 1/4 1/2Oak 8" S 63°E 13.5' - K. Pine 14" S 76°W 39.7'
No Post. Post 15.1" East edge of roadway
Witness Post 16.2" N 55°E
Oak 5" S 55°E 10.5' - Oak 4" N 38°E 12.2'
Pine Post
Poplar 6" N 61°E 20.1' - K. Pine 11" N 50°W 28.2'
Oak Post
Oak Post
Oak PostS. 20.
S 1/4 S. 12
S 1/4 S. 12
SE 1/4 1/2
SW 1/4 1/2Birch 7" S 74°E 20.0' - Oak 7" N 42°W 9.3'
Oak Post
Pine 5 1/2" S 80°E 33.6' - Pine 5 1/2" S 30°E 26.9'
Oak Post
Maple 3" S 47°W 23.8' - Poplar 5" N 8°W 11.1'
Oak Post
Oak 6" N 40°W 27.0'
Oak 7" N 68°E 48.8'

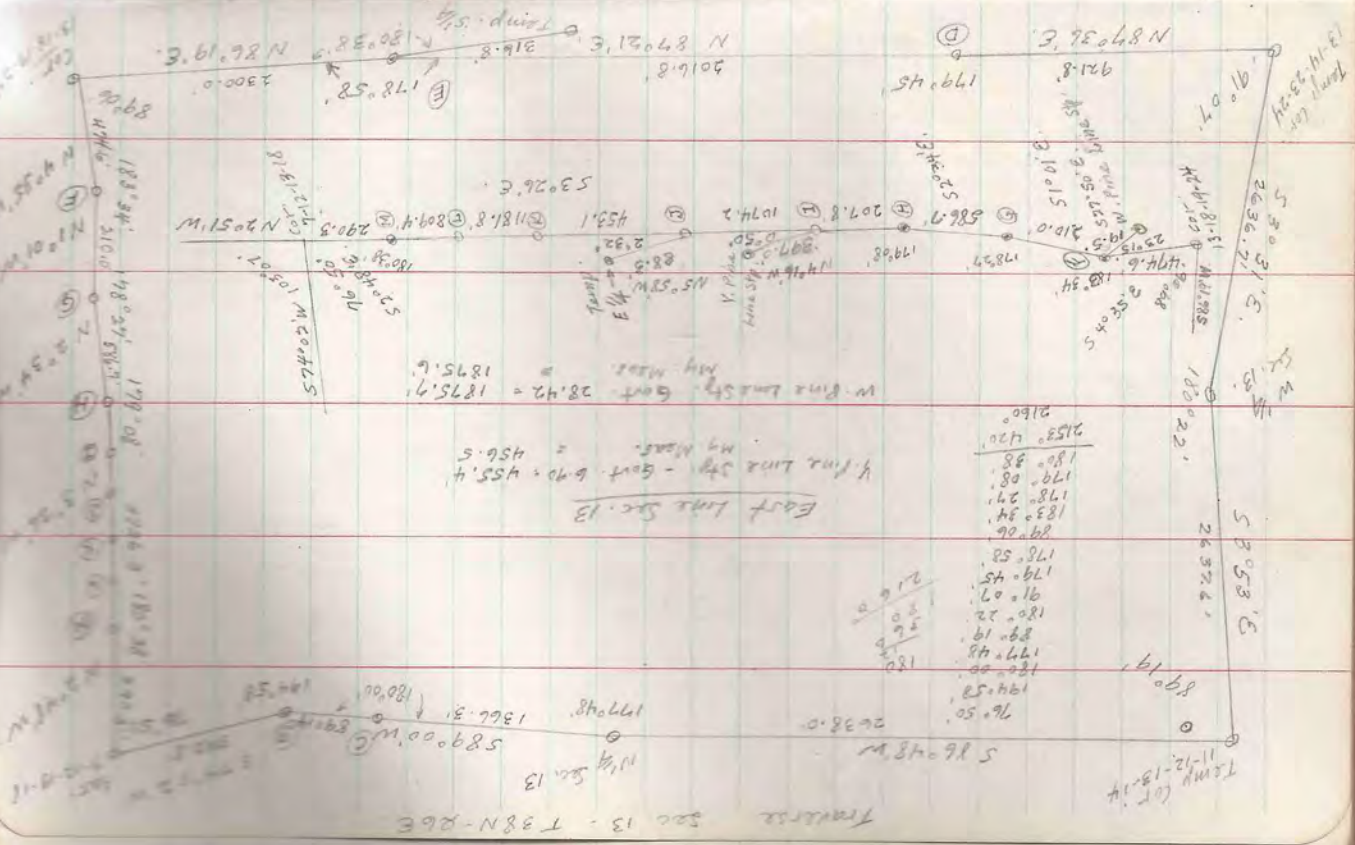
Comments - Completion of work

Arthur Youngberg
 Dec 12, 1916
 Saw witness Earl Smiley & other witnesses, both contacted witnesses for location of true corner in Sec. 13.
 Frank Madgick, Smith Bros. & several others stated that iron pipe in dump road was set by Lynn & O.H. Vaughan. This being corner to Sec. 11-12-13-14. My temporary falls 9 ft west & 3 ft north of the iron pipe. Stp on North side of dump road checks out dist. for any Stp, but bearing is reversed. Could find no marks on Stp. My temporary was set by double distance and projecting line from cor. 7-12-13-18 thru S4 Sec 12. S4 Sec 12 apparently is not an original point. Found old BT Stp. at this location. (Not origl.) Due to testimony of witnesses on dropping my temporary & accepting the iron pipe. Distance from S4 Sec 12 to iron pipe falls 9 ft. short of double distance and 6' out of line.
 At W4 Sec 13 found axle housing on East side of road. Testimony of witnesses indicates that true corner is in center of old H. 451 and 25 ft. west of the

axle housing which is a witness point set by Lynn & Vaughan. Accepted this as W4. Cor. Sec. 13-14-23-24 - supposedly at intersection of roads. Found no definite point. S4 cor. Sec 13 - Smith Bros. stated that orig. BT was grubbed out when road was constructed. Mr. Seubert built fence starting at this corner & extended south - before road was built. Accepted intersection of fence & 4' tall for Stp. Cor 13-18-19-24 - Mr. Wurst stated that iron pipe was once set on North E-W line of road running E-W & in line with 4' of road running south. Could not find iron pipe. Ran line from cor. Sec. 7-12-13-18 south. Placed temp E4 Sec 13 of Stp with nail & wire attached. Picked up possible line Stp from temp E4 Sec 13 south & projected line to road & set Temp. cor. 13-18-19-24. Found grass top v.s. and office survey Monument 1 ft below blacktop in center of roads. E4 Sec 13 - Accepted temporary as true point. Smith Bros. stated that they had back sight lined to W4 Stp approx. year 1916. Wood post was there at that time. I could not find marks on Stp searched area thoroughly but could not find evidence of a post or any other BT's. Stp on E4 Sec 13 by co-ordinates of exterior line points and ran only true lines to points which were required. Placed trees along all lines. Did not set a permanent point for the S4 Sec 13.

A. B. C. D. E. F. G. H. I. J. K. L. M. N. O. P. Q. R. S. T. U. V. W. X. Y. Z.

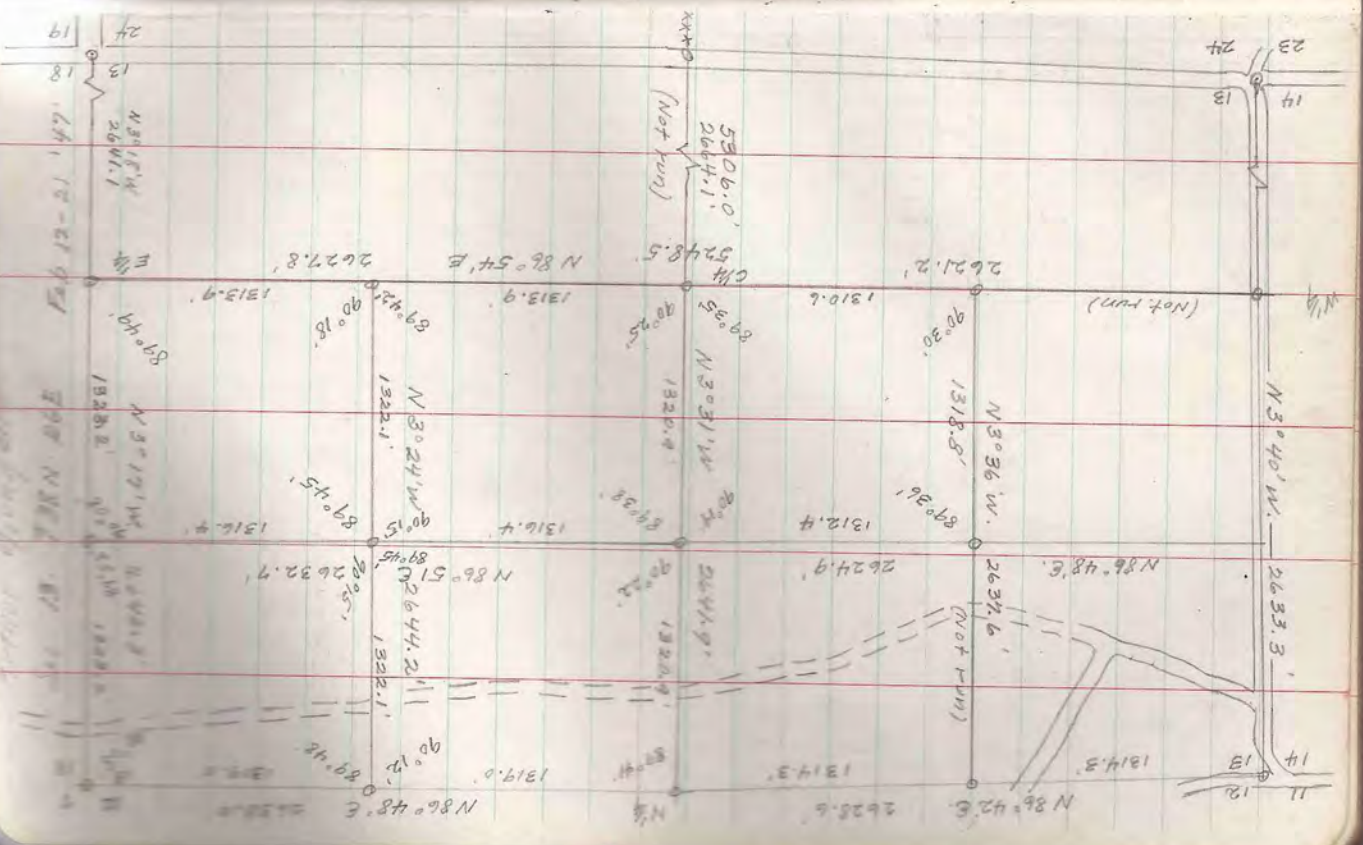
Sta.	Angle	Dist.	N	E	S	W
Sta. 7-12-13-18	194° 58'	392.8	574.02	W	392.8	
B	144° 58'	890.4	589.00	W	890.4	
C	180° 00'	1566.3	589.00	W	1566.3	
N 1/4 Sec. 13	179° 48'	2638.0	586.48	W	2638.0	
Temp. Cor. 11-12-13-14	89° 11'	10.5	8.64	E	10.5	
Temp. Cor. 11-12-13-14	89° 11'	2637.6	586.48	W	2637.6	
Temp. Cor. 13-14-23-24	180° 22'	921.8	530.31	E	921.8	
D	180° 15'	2016.8	187.91	E	2016.8	
E	178° 58'	2300.0	187.91	E	2300.0	
Temp. Sta. 13-18-19-24	180° 38'	316.8	586.51	W	316.8	
Temp. Sta. 13-18-19-24	76° 50'	290.3	520.48	E	290.3	
M	180° 38'	809.4	530.26	E	809.4	
L	180° 00'	1181.8	530.26	E	1181.8	
K	180° 00'	453.1	530.26	E	453.1	
J	180° 00'	1074.2	530.26	E	1074.2	
I	180° 00'	88.3	530.26	E	88.3	
H	179° 08'	395.9	570.34	E	395.9	
G	178° 07'	207.8	510.01	E	207.8	
F	183° 34'	474.6	540.35	E	474.6	
E	153° 11'	19.5	507.50	E	19.5	
D	180° 00'	207.8	530.26	E	207.8	
C	180° 00'	395.9	530.26	E	395.9	
B	180° 00'	12.44	530.26	E	12.44	
A	180° 00'	9.08	530.26	E	9.08	
Temp. Sta. 13-18-19-24	179° 08'	455.84	570.34	E	455.84	
Temp. Sta. 13-18-19-24	187° 56'	1875.6	1875.6	W	1875.6	
Temp. Sta. 13-18-19-24	141.63	1416.3	1416.3	W	1416.3	
Temp. Sta. 13-18-19-24	5287.5	5287.5	5287.5	W	5287.5	
Temp. Sta. 13-18-19-24	2639.37	2639.37	2639.37	W	2639.37	
Temp. Sta. 13-18-19-24	2641.1	2641.1	2641.1	W	2641.1	
Temp. Sta. 13-18-19-24	2636.69	2636.69	2636.69	W	2636.69	
Temp. Sta. 13-18-19-24	151.63	151.63	151.63	W	151.63	
Temp. Sta. 13-18-19-24	81.08	81.08	81.08	W	81.08	
Temp. Sta. 13-18-19-24	303.27	303.27	303.27	W	303.27	
Temp. Sta. 13-18-19-24	295.28	295.28	295.28	W	295.28	



Traverse Sec 13 - T 38N-R6E

Alford Young Bay
S. 13. T. 36N. R. 26E.

Sta.	Angle	Boatmg	Dist.	Lot	Trk Corners
11	1314.3	N 86° 42' E	2628.6		
12					
13					
14					
15					
16					
17					
18					
19					
20					
21					
22					
23					
24					



ARTHUR Youngberg

Summary - work accomplished necessary to carry out work

46	Corners	Set
28	Corners	Marked up
30	Corners	Marked up
10 1/2	Miles	Random line Run
9 1/2	Miles	Tran lines Run - All Blazed

Nearly all of the section lines which I have retraced were previously run by surveyors, at various dates, and as being the most accurate because of the availability of original points at that time. My work consisted of retracing most of these points as nearly as possible. There is conflict on the East end of Section 12. (Range 12) The 1/2 Cor. N 1/4 1/2 Cor. do not fit the general pattern of work previously surveyed in Section 12. There is no proof in the form of original Govt points to confirm either survey accepted of the latest work and retraced on that basis.

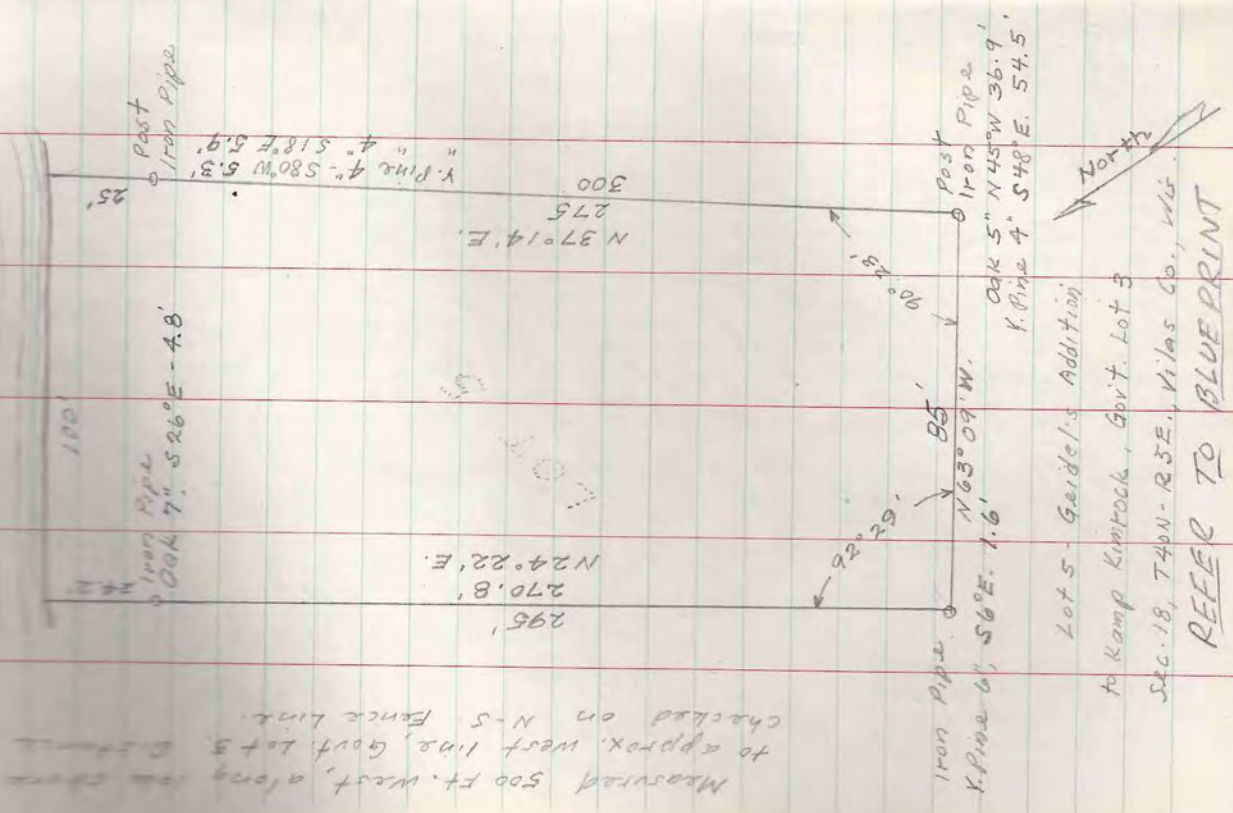
Retraced and confirmed Range line betw. Sec. 13-18. Found old Govt. line stps. and BT stps. (No marks) which conform to original Govt. Notes, Set Ely Cor. Sec. 13 accordingly.

Arthur Youngberg
Feb 21 - 28 1907

Calcutt on bearings
10/18/07
11/18/07
12/18/07
1/14/08-24
2nd Cor.
7-12-18-18
Sec. 13
5/19
Sec. 13
E 1/4
Sec. 13
N 1/4
E 1/4
N 1/4-13
N 1/4-13
E 1/4-13
E 1/4-13
Center NW 1/4
W 1/4-13
W 1/4
N.W. Sec. 13

Set by D.H. Naughton as witness point
E-W.
N. Pine stp. - N. Pine stp. N 44° E. 5 FT. (Passive orig. Mark)
Oak 5" N 80° W - 17.4' Oak 10" N 18° E. 40.4'
Old Pine stp. 187' South 25.4' Oak Post
Oak 7" S 9° W. 17.6' - Oak 7" N 72° E 18.8'
Oak Post
W. Pine 11" S 61° W. 25.8' - N. Pine 10" N 74° W. 12.9'
Oak Post
N. Birch 5" N 12° E. 18.2' - Oak 5" S 62° E. 36.9'
Oak Post
Oak 6" S 72° W. 38.6' - Oak 5" S 20° E 38.8'
Oak Post
Paper 9" 200 W. 11.7' - Paper 6" N 89° E. 29.9'
Paper Post
Jack Pine 9" N 31° E. 4.5' - Jack Pine 10" N 54° W. 2.1'
Oak Post
Oak 6" N 42° W. 6.2' - Oak 8" S 79° E. 27.5'
Oak Post
Oak 4" N 40° W. 12.1' - Oak 6" N 60° E. 27.3'
Oak Post
Nor. Pine 6" N 82° E. 21.8' - Oak 7" S 26° E. 15.9'
Oak Post
Birch 7" S 74° E. 20' - Oak 7" N 42° W. 9.3'

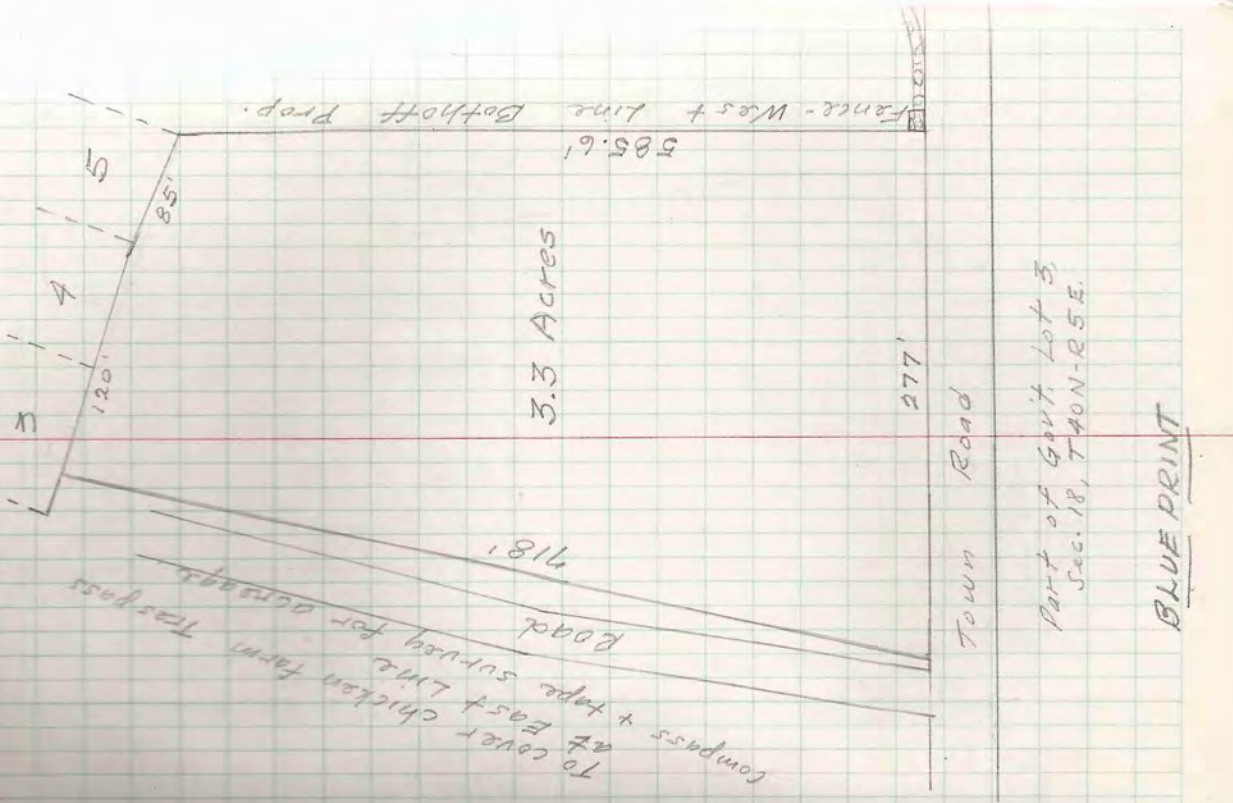
Walter Bethoff
 SHABOCCO LAKE



Lot 5 - Gaide's Addition
 to Kamp Kintock, Govt. Lot 3
 Sec. 18, T40N-R5E, Vilas Co., Wis
 REFER TO BLUEPRINT

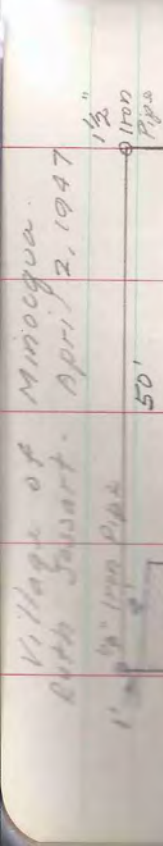
Measured 500 ft. west, along the shore
 to approx. west line, Govt. Lot 3. Distance
 checked on N-S fence line.

Walter Bethoff
 Shabo Lake. Loc de Flambeau.
 April 9, 1947.



Part of Govt. Lot 3,
 Sec. 18, T40N-R5E.
 BLUE PRINT

Mr. Gust Todoran
408 Jackson St.
Nausau, Wis



NICHOLS

LOT 16
BLOCK 9
Village of Minocqua

2 1/2" 1/2" Iron Pipe
4'2"

124'-5 1/2"

124'-6 1/2"

50'

56.6' West Corner to Block Corner

5' Cement Walk

5' Cement Walk

90°

90°

Steel Bar

2-2'

Mark on Mark on

Mark on Walk 2 1/2' West of joint

Mark on Walk 2 1/2' West of joint

56.6' West Corner to Block Corner

5' Cement Walk

5' Cement Walk

90°

90°

Steel Bar

2-2'

Mark on Mark on

Mark on Walk 2 1/2' West of joint

Mark on Walk 2 1/2' West of joint

56.6' West Corner to Block Corner

5' Cement Walk

5' Cement Walk

90°

90°

Steel Bar

2-2'

Mark on Mark on

Mark on Walk 2 1/2' West of joint

Mark on Walk 2 1/2' West of joint

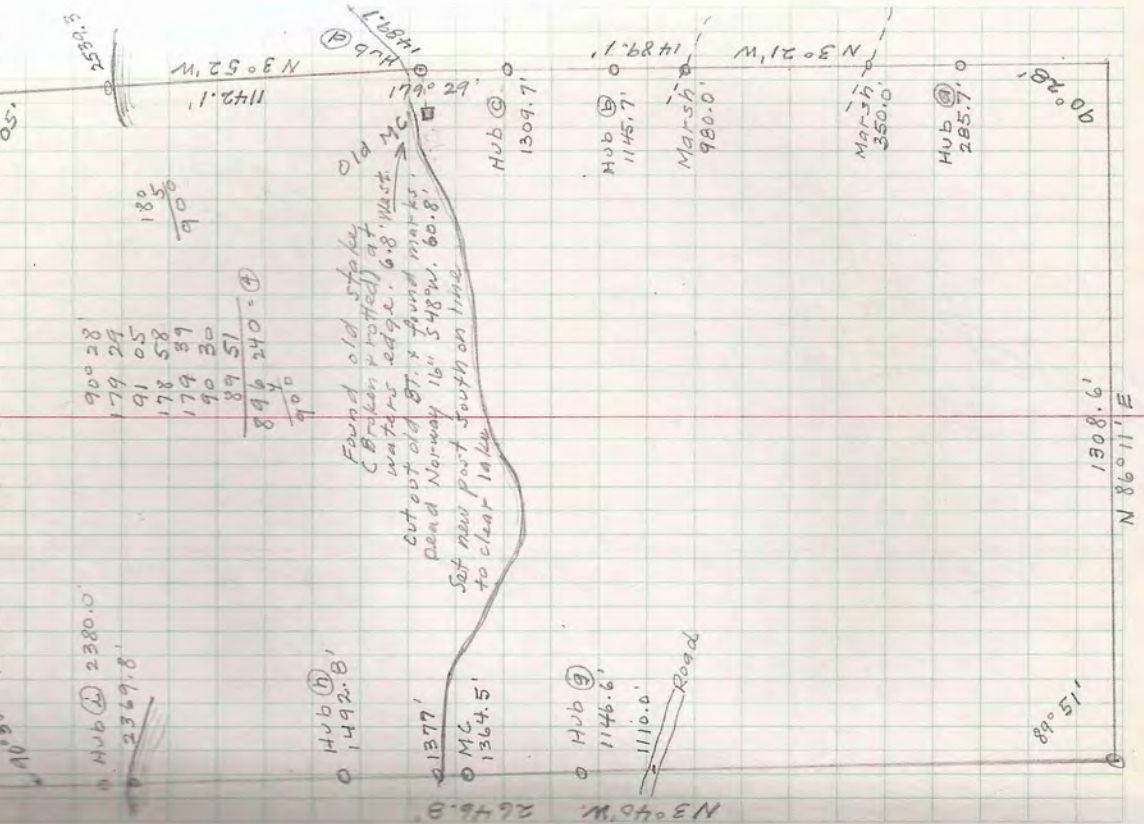
AVE.

BLUE PRINT

4. Tolucon
MINNAR LAKE



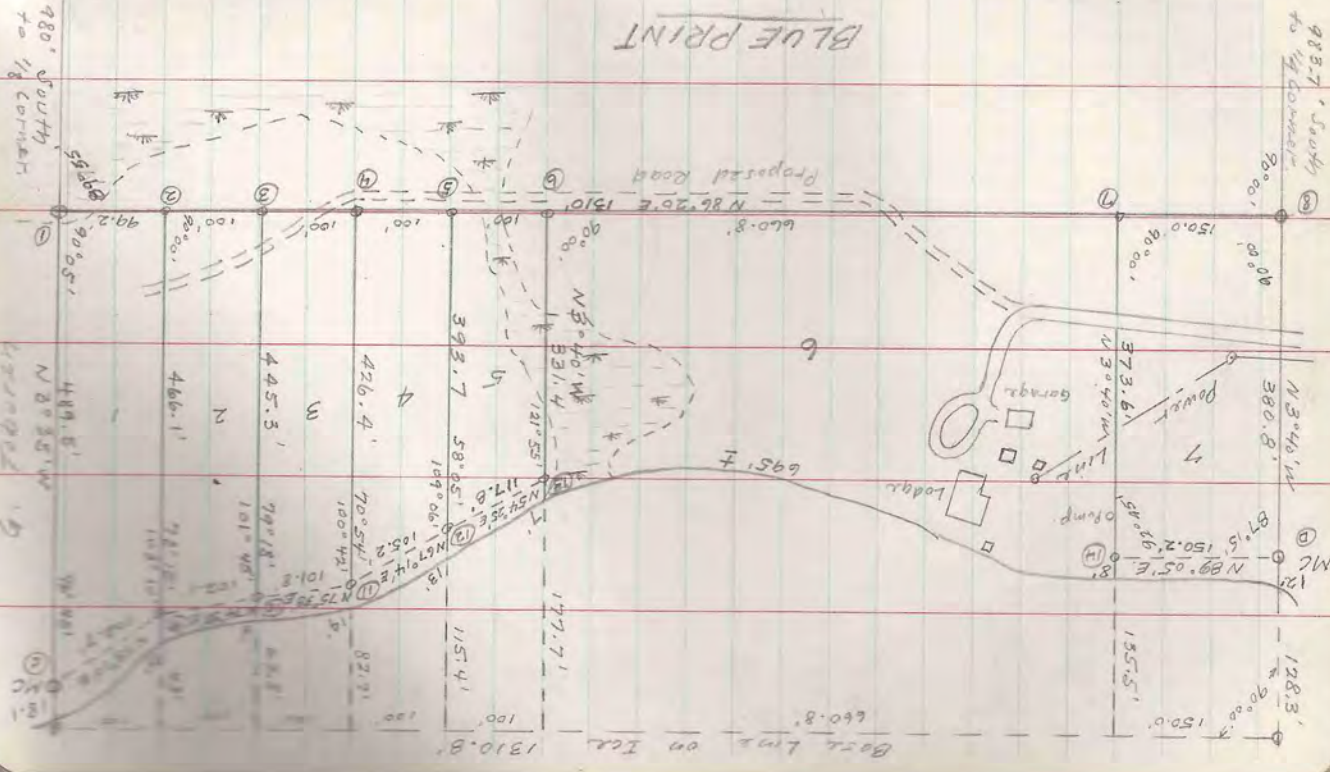
Govt. Lot 3, Sec. 12, T 38N, R 6E, March 25



90° 28
179 24
91 05
178 58
179 39
90 30
89 51
896 240.8
900

Traverse

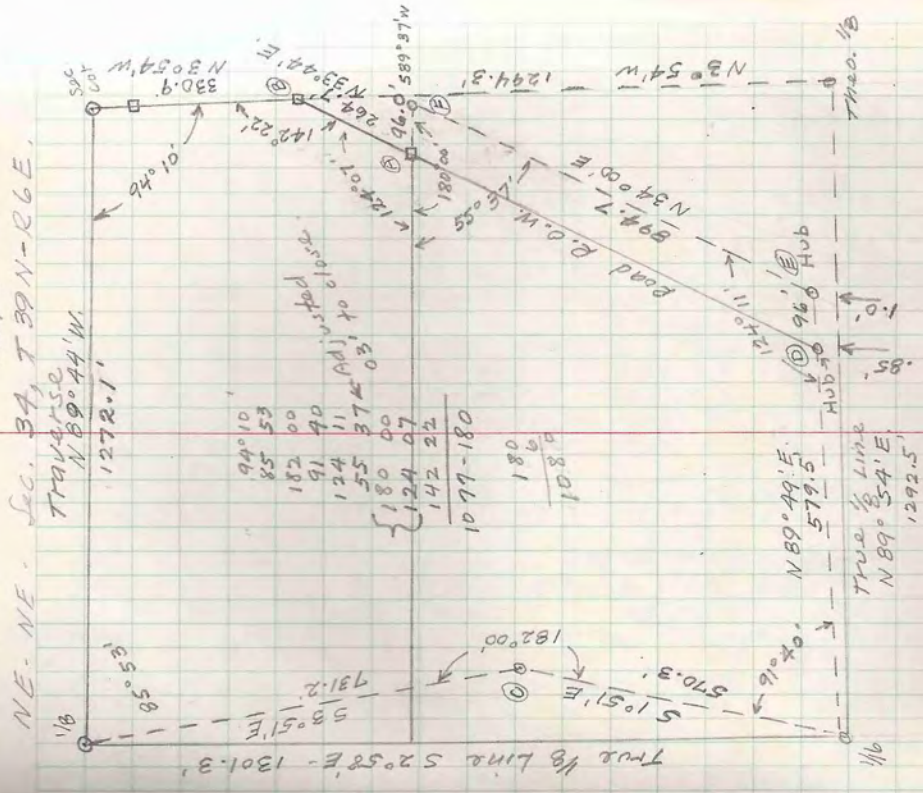
Govt. Lot 3, Section 12, T 88N - R 6E, March 1947



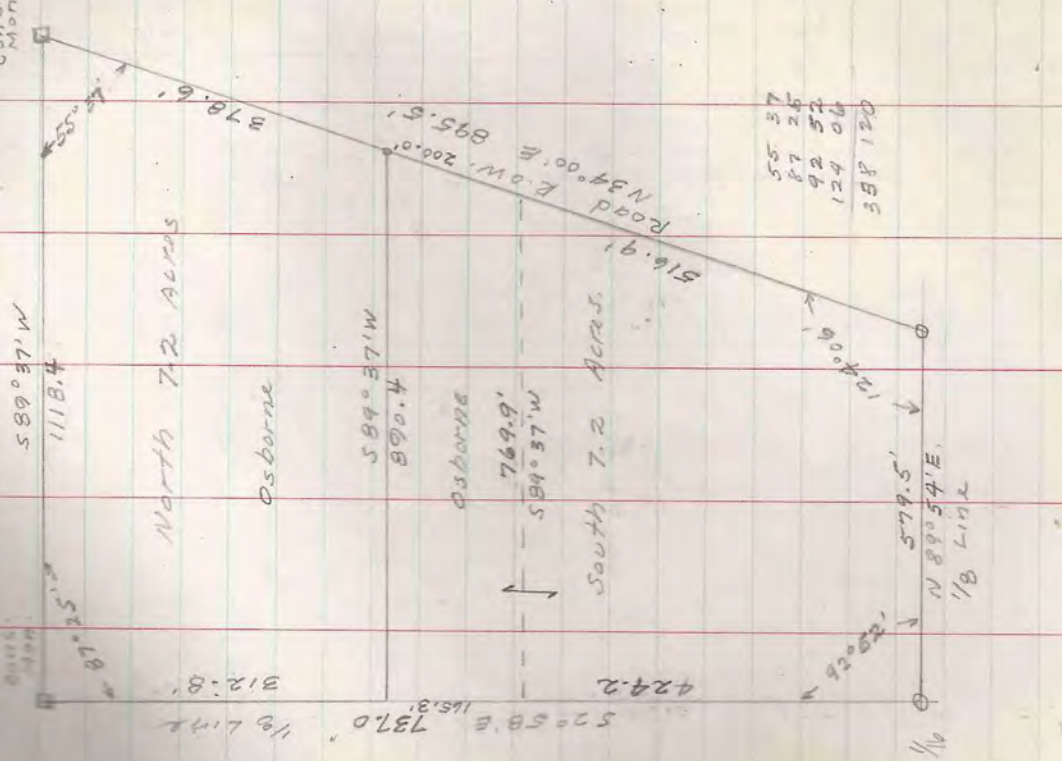
Sta	Angle	Bearing	Dist.	N	S	E	W
W 1/4 Sec. 12		N 86° 11' E	1308.6	87.20	1305.7		
W 1/4 Sec. 12		N 3° 21' W	1489.1	1486.5			
W 1/4 Sec. 12		N 3° 52' W	1142.1	1139.5			
Hub (D)		587° 13' W	902.0	43.86	17.97	10.23	
Hub (C)		178° 58'	586° 11' W	270.0	900.98	269.40	140.43
Hub (F)		179° 39'	585° 50' W	140.8	264.14	265.137	140.43
W 1/4 Sec. 12		N 3° 46' W	2646.5	2644.14	169.11		
to M.C.		N 3° 35' W	1487.6	1484.70	92.97		
W 1/4 Sec. 12		N 3° 35' W	980.0	981.70	61.26		
W 1/4 Sec. 12		N 3° 40' W	983.7	981.70	62.91		
W 1/4 Sec. 12		N 86° 20' E	1810.0	183.60			
					1307.35		

1310.8' Base line on T&C
 660.8' Proposed Road
 980' South 1/4 corner to 1/8 corner

Osborne & McLemore, 1947
May 5, 1947



Osborne + Mc Lanahan
 1844 5, 147
 1845 5, 147
 1846 5, 147
 1847 5, 147
 1848 5, 147
 1849 5, 147
 1850 5, 147
 1851 5, 147
 1852 5, 147
 1853 5, 147
 1854 5, 147
 1855 5, 147
 1856 5, 147
 1857 5, 147
 1858 5, 147
 1859 5, 147
 1860 5, 147

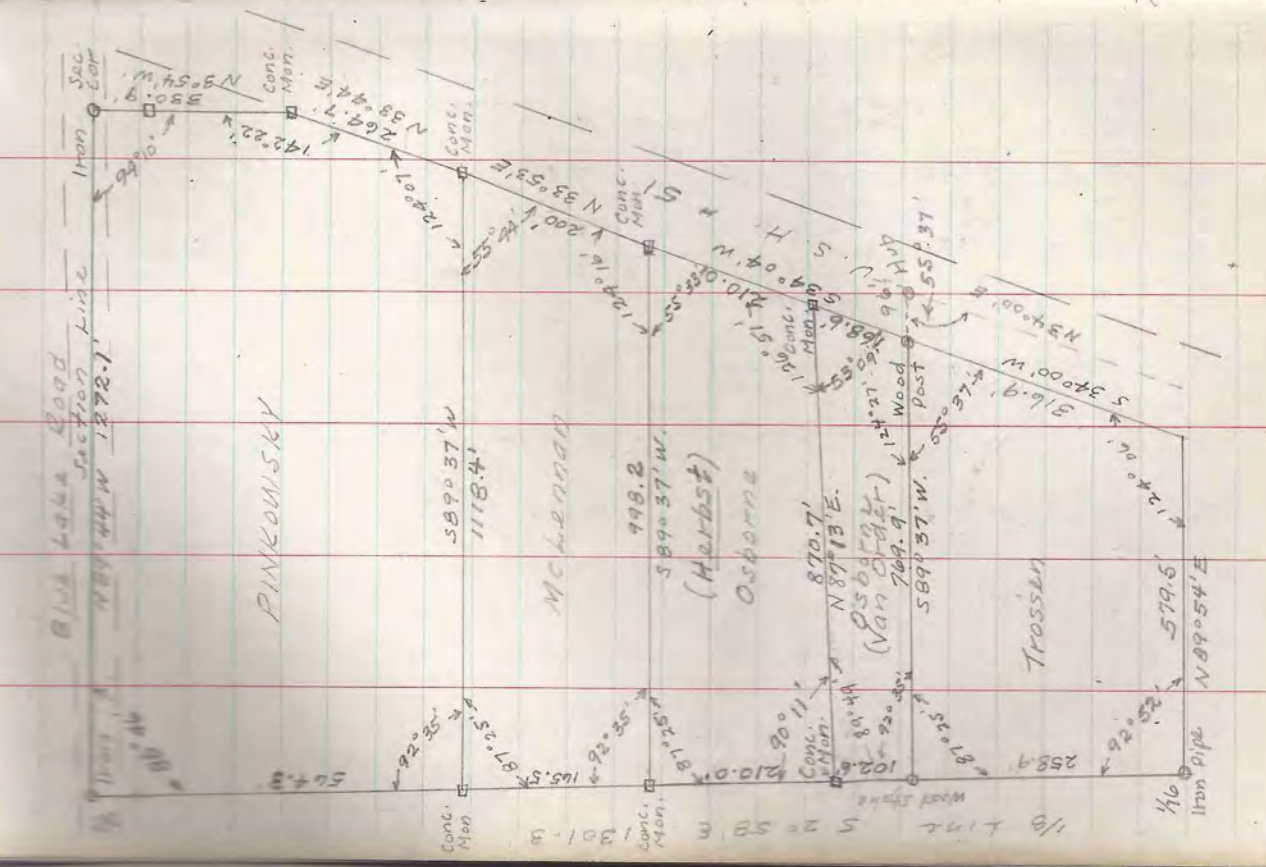


Osborne + Mc Lanahan
 1844 5, 147
 1845 5, 147
 1846 5, 147
 1847 5, 147
 1848 5, 147
 1849 5, 147
 1850 5, 147
 1851 5, 147
 1852 5, 147
 1853 5, 147
 1854 5, 147
 1855 5, 147
 1856 5, 147
 1857 5, 147
 1858 5, 147
 1859 5, 147
 1860 5, 147

Sta	Angle	Bearing	Dist.	N	S	E	W
A	304°07'	N33°44'E	269.7	220.14	147.00	0	0
B	142°22'	N30°54'W	330.9	330.14	0	0	0
C	182°00'	N89°44'W	1278.1	5.92	0	0	0
D	91°40'	N89°49'E	579.7	1.85	0	0	0
E	124°11'	N34°00'E	844.7	0.31	0	0	0
F	55°37'	S89°37'W	96.0	0.64	0	0	0
* Distance adjusted to close							
800.10 1300.19 1390.51 1390.60							
* Exterior lines of NE-N							
88.03 1272.10 1297.22 1299.60 67.35 1360.19							
Tan. 2.58 = 0°06'							
1292.8							
On True E-W-1/8 Line							
1.01 579.50 96.00 313.87 5.96 1118.4							
Osborne - North 7.2 Acres of the South 14.4 Acres							
742.35 742.34 742.17 464.26 1080.89 500.29 464.26							
North 200 ft of the South 7.2 Acres							
534°00'W 878.6 890.4 812.8 118.4							
N20°58'W 812.8 312.40 7.40							
N89°37'E 118.4 200.0 769.9							
S89°37'W 769.9 165.3 890.4							
N30°58'W 165.3 5.96 165.00							
S89°37'E 890.4 5.15 165.81							
111.88 769.90 8.56 890.4							

Wm. Osborne
NE/NE, Sec. 34, T. 39N-R6E

Sta.	Angle Bearing	Dist.	N	S	E	W	N	S	E	W
55+44	S 35.53' W	200.00	166.07				111.50			
124+16	S 89.37' W	998.20	6.68				998.20			
92+35	N 20.58' W	165.50	165.50							
87+25	N 89.37' E	118.40		7.40				118.4		
534+04	N	210.0								
587+13	W	870.7								
534+04	N	210.0								
189+37	E	998.2								
534+04	W	168.6								
589+37	W	769.9								
N 20.58' W		102.6								
N 87.13' E		870.9								
534+00	W	316.9								
589+54	W	579.5								
N 20.58' W		258.9								
N 89.37' E		769.9								
Balance of NE/NE lying West of U.S. 51		262.70	1.01				177.20			
		869.70								
579.50										
13.40										
769.90										



PINKOWSKY

McLennan

(Herbst)

Osborne

Trossen

Blue Lake Road Section Line

Sec. 34

Iron pipe

1/8 Line

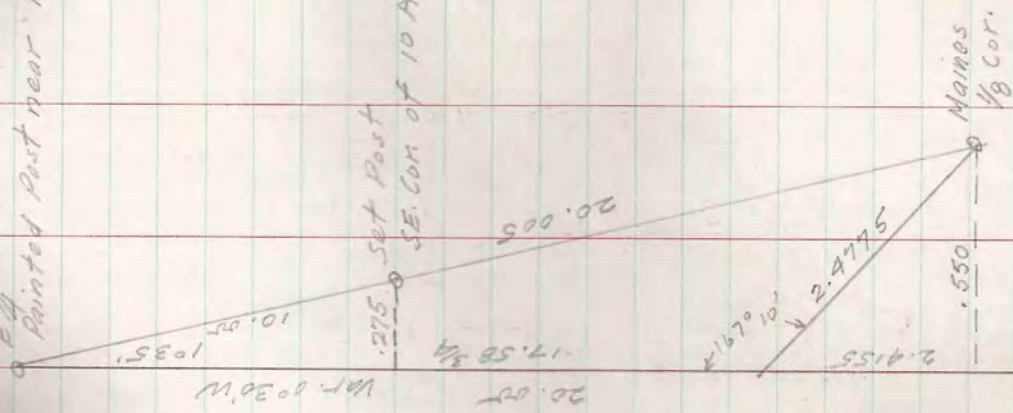
S 20.58' E

1301.3

T 38N - E 7E SEC. 3

Mrs. Isobell Eberts July 13 '46
To locate 10 Acres in NE Cor. NE-SE

E 1/4
Painted Post near R.R.



T 38N - E 7E SEC. 3

Mrs. Isobell Eberts July 26 '47
At E 1/4 Cor. angle from true line south
1035' to old monument ak. (opp. page)

85° 58' to true line Sta. (A) Dist. 308.4

- At (A) 173° 47' 134.05 to B
- " (B) 192° 47' 886.8 to 1/8 Cor. (Lytle)
- " 144° 15' 85° 31' 1185.0 to C
- " C 176° 52' 135.0 to Post (P)
- " C 183° 53' 149.8' to brass

cap 1700 Pipe set by A. J. Lytle
(Winter 46 - '47)

	Course	N	S	E	W
1/8 Cor. - 1/4 Cor.	N 105° W	1320.1			24.47
1/4 Cor. A	S 82° 53' W		27.50		307.17
A - B	S 78° 40' W		26.34		131.43
B - E 1/8 on 1/4 Lm.	N 87° 57' W	33.26			886.17
1/8 Cor. - C	S 20° 20' E		1184.02	48.24	
C to 1/16 Post P	S 55° 24' E		134.40	12.70	
C to 1/16 Lytle	S 10° 33' W		149.74		4.05

COORDINATES

50. 1/8 on E. Lm.	0	0	0	0	24.97
E 1/4 Cor.	1320.1				332.14
A	1292.6				463.57
B	1266.3				1349.74
E 1/8 on 1/4 Lm.	1299.6				1801.50
1/8 Post	1151.6	18.80			1288.80
1/8 Lytle		34.10			1305.55

T38N-R7E SEC. 3

Coord E 1/4 1320.1N 24.97W
 E 1/4 on 1/4 LN. 1249.6N 1349.74W
 20.5 1324.77

Dist. Tan, 589007'W 1325.0
 NW cor. 10 Acre 589007'W 662.5

" " " Coord. 1809.9N 687.37W
 At E 1/4 Angle from (A) 4014' Dist. 662.5
 At (B) " (A) 15739' Left - Dist. 228.1

Course N 78° 59' W

Set cedar post and Iron Pipe.
 W. Traversed by Oak " 546° E 33.4'

At this corner angle from (B) 578.59' E to
 true line. - 51° 30' E - Dist. 663.6

Set cedar post + Iron Pipe witnessed by
 Y. Pipe 14" N 54° E 4.3'
 for center of NE 1/4 - SE 1/4

At this corner angle from N 1030' W to
 true line N 88° 49' E - Dist. 658.6
 to close on Oak Post and 1. Pipe set
 on E. section line 10.00 chains South
 of E 1/4 and 10.00 North of Maines 1/8 Cor
 on July 13, 1946

Set cedar post + Iron pipe South
 side of road 33ft South of E

Dist. E. from Cent. NE-SE 431.7
 " W. from post 10ch. South of E 1/4
 224.9

T38N-R7E SEC. 3 Mrs. Ebert

NE 1/4 - SE 1/4
 1299.6N 1809.9N
 1349.74W 687.37W
 1320.1N 24.97W

589° 07' W 1325.0'
 11.P. 662.5'
 546° E 33.4'

1327.4' Mrs. Ebert
 10 Acres

1.P. 658.6' Post
 588° 49' W 224.9'
 660 N 12.5W

1.P. 14" N 54° E 4.3'
 N 1030' W
 1105.5N

653.1 653.1
 588° 30' W 17.055
 652.7' W 1306.0'

1105.5N
 1809.9N
 1349.74W
 1320.1N
 24.97W

1809.9N
 687.37W
 1320.1N
 24.97W

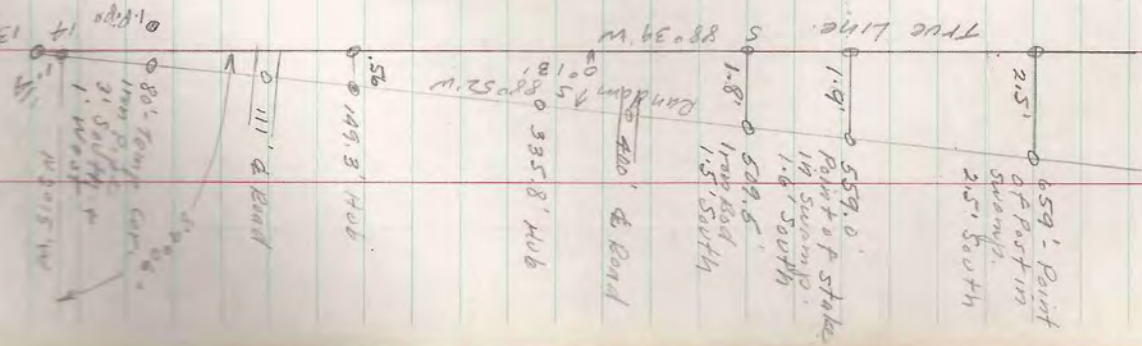
1809.9N
 687.37W
 1320.1N
 24.97W

1809.9N
 687.37W
 1320.1N
 24.97W

SEC. 13-14 T39N-R5E

Govt. Lots 9 & 2 Nov. 1944

Found points of original stakes (Burnett 1926) under moss in swamp. Point 666 ft. west of 1/4 cor. is indicated as 1/8 cor. on Burnett's plot - obviously an error



$$\frac{2.5}{659.0} = \tan \theta$$

$$\theta = 2.1888^\circ$$

$$9.579055 = 0.13'$$

$$0.13' - 149.3'$$

$$2.174060$$

$$7.572672$$

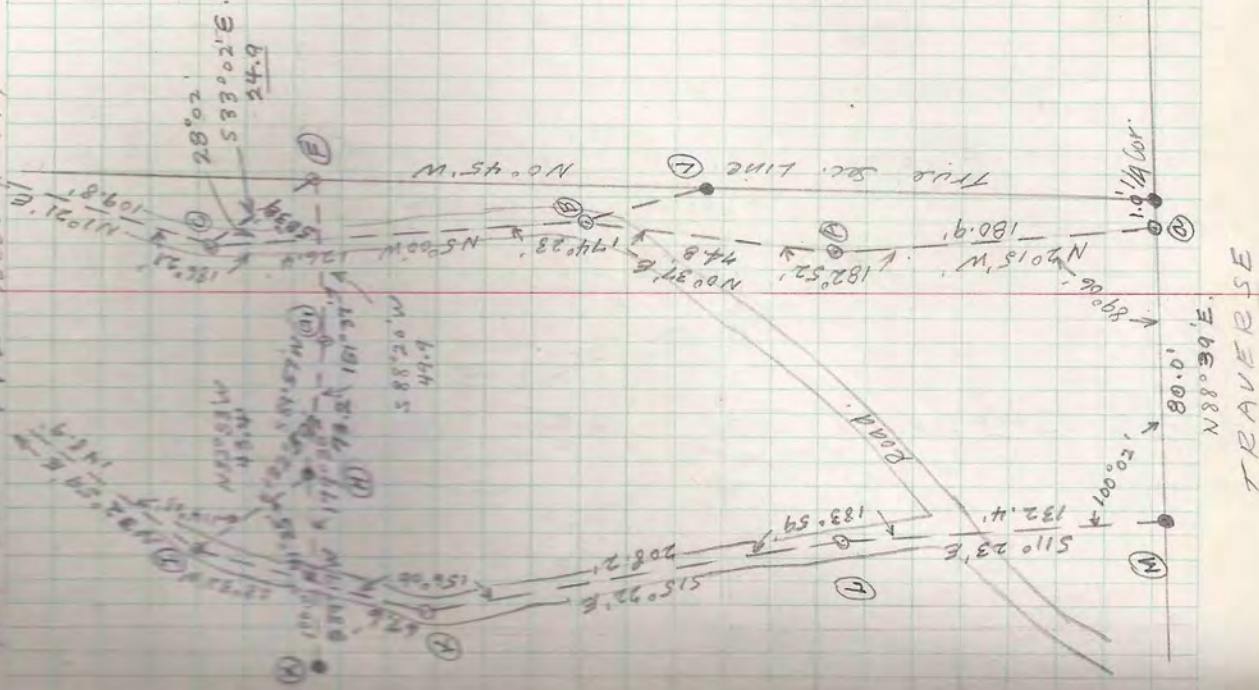
$$9.751732 = .56'$$

North

SEC. 13-14 T39N-R5E

Govt. Lots 9 & 2 Nov. 1947

E.H. Burns



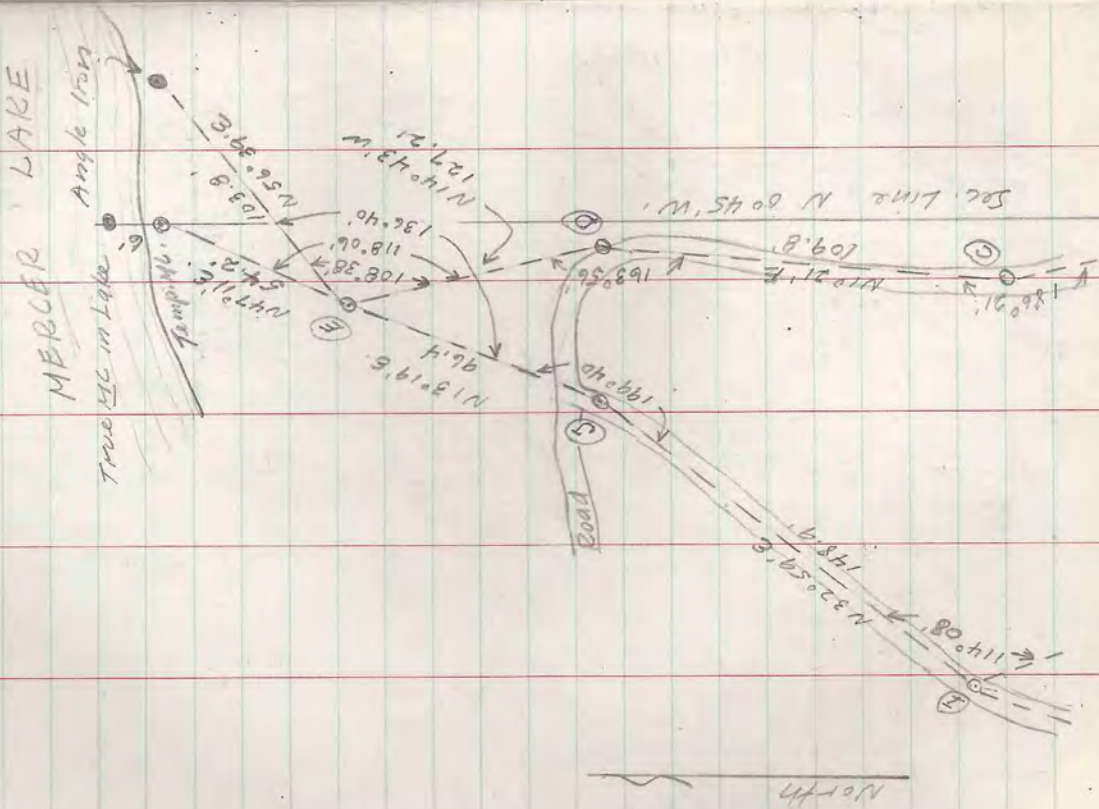
TRAVERSE

MERCER LAKE

North

SEC. 13-14-739N-R5E
Govt. Lots 9+2 Nov. 1947

TRAVERSE



STN	58° 06'	180.9	S 88° 31' W	1.0	81	7.10	180.72
A	89° 06'	N 20° 15' W	180.9	180.72	180.72	180.72	180.72
B	182° 52'	N 6° 37' E	74.8	180.9	180.72	180.72	180.72
C	174° 23'	N 5° 00' W	126.4	125.90	125.90	125.90	125.90
D	186° 21'	N 10° 21' E	109.8	109.70	109.70	109.70	109.70
E	163° 56'	N 14° 43' W	127.2	123.10	123.10	123.10	123.10
F	118° 06'	N 47° 01' E	54.2	36.83	36.83	36.83	36.83
G	108° 38'	N 56° 39' E	103.8	57.06	57.06	57.06	57.06
H	58° 02'	S 33° 02' E	24.9	20.90	20.90	20.90	20.90
C	58° 38'	S 88° 30' W	49.9	1.45	1.45	1.45	1.45
F	58° 38'	S 88° 30' W	73.20	0.07	0.07	0.07	0.07
Temp	178° 23'	S 84° 05' W	73.20	1.29	1.29	1.29	1.29
H	589° 17' W	100.0	100.0	93.81	93.81	93.81	93.81
X	513° 19' W	46.4	46.4	124.9	124.9	124.9	124.9
E	532° 59' W	148.9	148.9	36.45	36.45	36.45	36.45
I	532° 53' E	43.4	43.4	23.56	23.56	23.56	23.56
J	58° 32' W	67.6	67.6	66.85	66.85	66.85	66.85
K	515° 22' E	208.2	208.2	55.17	55.17	55.17	55.17
L	511° 23' E	132.4	132.4	26.13	26.13	26.13	26.13
M	N 68° 39' E	80.0	80.0	79.98	79.98	79.98	79.98
N	528° 05' E	64.64	64.64	56.61	56.61	56.61	56.61
O	559° 10' E	25.22	25.22	12.93	12.93	12.93	12.93
P	565° 29' E	11.35	11.35	4.71	4.71	4.71	4.71
Q	59.90						

SEC 13-14-739N-R5E
Govt. Lots 9+2 Nov. 1947

35
59.90
70.23
48.57
70.23
103.76
106.15
130.12
161.32
80.02

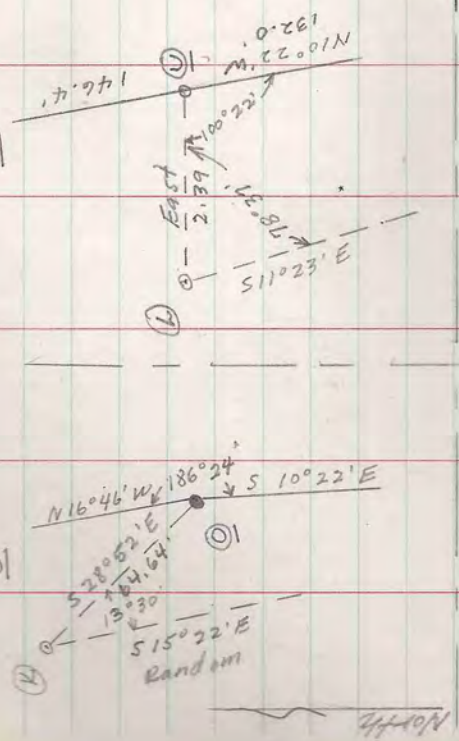
38.68
41.03
8.26
48.03
15.22
18.31
7.89
8.10

180.72
180.72
255.52
255.52
381.42
381.42
491.12
491.12
614.72
614.72
651.05
651.05
671.28
671.28
81.42
81.42
49.88
49.88
360.52
360.52
359.05
359.05
358.98
358.98
337.71
337.71
614.22
614.22
520.41
520.41
395.51
395.51
359.06
359.06
385.51
385.51
328.66
328.66
127.96
127.96
328.66
328.66
161.32
161.32
106.15
106.15
80.02
80.02
1.24
1.24
0.04
0.04
328.66
328.66
272.05
272.05
127.96
127.96
127.96
127.96
130.12
130.12
106.15
106.15
103.76
103.76
70.23
70.23
48.57
48.57
70.23
70.23
59.90
59.90

SEC. 13-14 T39N-R5E
 Govt. lots 9 & 2
 Nov. 1947
 L.H. Burns

SEC. 13-14 T39N-R5E
 Govt. lots 9 & 2
 Nov. 1947

SEC. 13-14 T39N-R5E
 Govt. lots 9 & 2
 Nov. 1947
 TO SET CORNERS BY OFFSETS



Stadia

Conc. MC.	Betw. lots 2 & 3 - B.S. Hub	Hub
32° 50'	Right	170'
33° 40'	"	120'
11° 15'	"	55'
20° 15'	"	36'
64° 53'	Left	15'
170° 30'	"	16'
69° 36'	Left	54.9'
(To Sta. 1)		

Sta. 1 - B.S. MC.		
71° 15'	Right	75' NW Cor. Dock
79° 00'	"	70' SE Cor. Dock
81° 30'	"	43' Dock at Shore
104° 30'	"	50' Shoreline
120° 45'	"	83'

TRUE LINES & CORNERS

136.91	399.94	7.54	
144.45	358.48		
127.70	372.23	16.95	
140.30	358.67		
152.70	378.98	12.40	
127.70	378.23	25.00	
140.30	358.98		
127.70	361.88	12.60	
4.72	360.50		
105.68	366.71	110.40	
4.72	360.50		
131.67	202.52	110.40	
2.63	200.80		
54.72	359.90	134.30	
52.63	200.55		
2.63	200.50	50.00	

Angle Bearing Dist.

N 10° 15' W	200.8		
S 79° 15' W	50.0		
N 00° 45' W	159.7	159.65	.654
N 89° 15' E	134.3	1.76	
N 86° 47' E	110.4	6.21	
N 89° 17' E	110.4	1.38	
Record corner (on line - short in distance)			
N 33° 11' W	28.0	19.25	
S 89° 17' W	35.0	19.56	.81
N 89° 22' E	28.15	12.40	
N 38° 11' W	30.6	25.61	
N 24° 41' E	16.9	15.35	

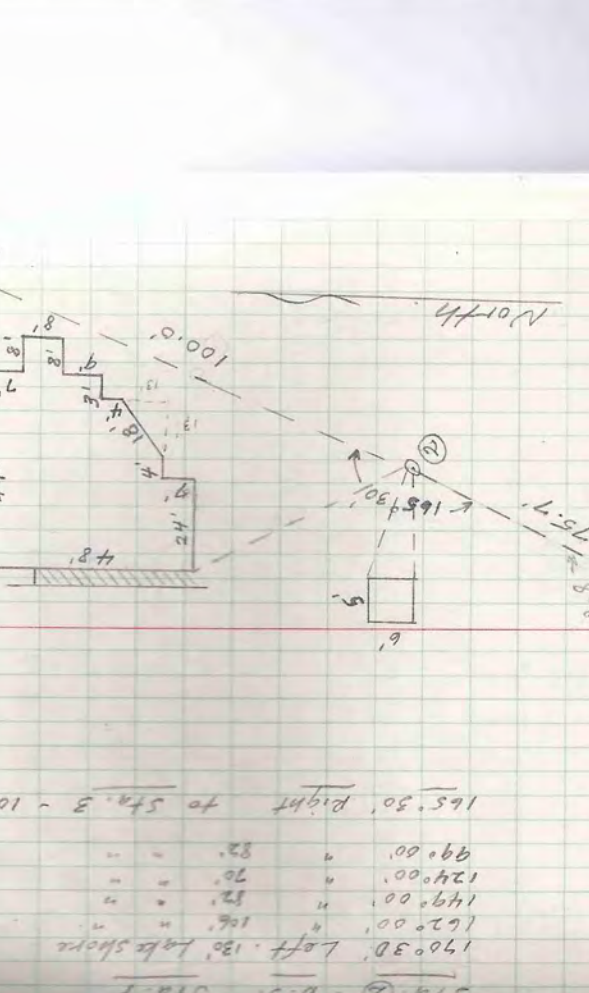
Sta. H T H D L H H H S

1/4 Cor.	
Y-foot Cor.	
N	
Z	
V	
G	
F	
B - Existing Iron Pipe	
F	
18° 30' N 86° 47' E	110.4

SEC. 13-14, T39N-R5E E. 1/4 Burns

Govt. Lots 9 & 2 Nov. 1947
Stadia

Sta. ① - B.S. - M.S.
127°00' Right
134°45' "



170°30' Left. 130' Lake shore

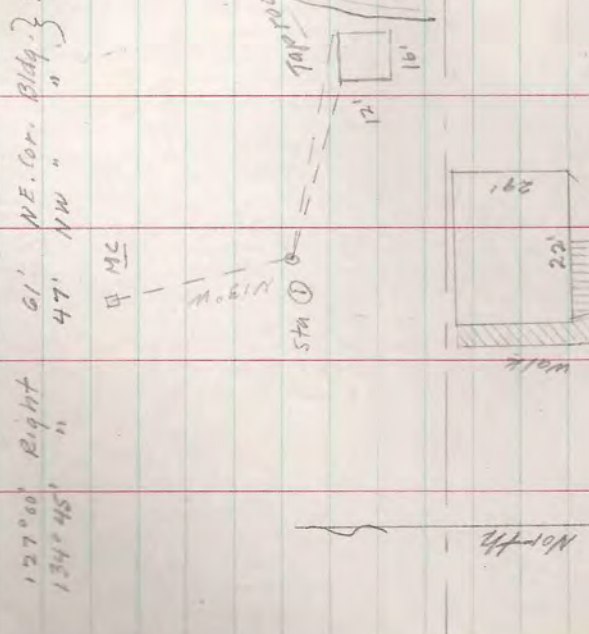
162°00'	106'
149°00'	52'
124°00'	70'
99°00'	82'
165°30' Right	to Sta. 3 - 100'

Sta. ② - B.S. - Sta. F
136°08' Right to Sta. ② 45.7'
Sta. ③ - B.S. - Sta. F
52°00' Right. SE. Bldg. Cor. 32.7'
62°30' " NE " " 32.9'
107°45' Right. 54' Main Lodge SW. Cor.
134°00' " 48.5' " " " " "
138°00' " " " " " " "
147°30' " 70' " " " " "
149°15' " 76' " " " " "
152°45' " 86' " " " " "

Sta. F - B.S. - Sta. G
85°00' Right 20' SW. Bldg. Cor.
135°45' " 27.5' SE " " "

SEC. 13-14, T39N-R5E
Govt. Lots 9 & 2 Nov. 1947
Stadia

Sta. ① - B.S. - M.S.
127°00' Right
134°45' "



170°30' Left. 130' Lake shore

162°00'	106'
149°00'	52'
124°00'	70'
99°00'	82'
165°30' Right	to Sta. 3 - 100'

Sta. ② - B.S. - Sta. F
136°08' Right to Sta. ② 45.7'
Sta. ③ - B.S. - Sta. F
52°00' Right. SE. Bldg. Cor. 32.7'
62°30' " NE " " 32.9'
107°45' Right. 54' Main Lodge SW. Cor.
134°00' " 48.5' " " " " "
138°00' " " " " " " "
147°30' " 70' " " " " "
149°15' " 76' " " " " "
152°45' " 86' " " " " "

Sta. F - B.S. - Sta. G
85°00' Right 20' SW. Bldg. Cor.
135°45' " 27.5' SE " " "

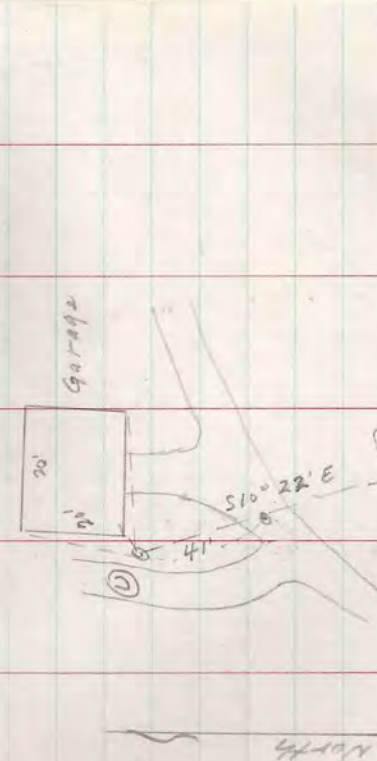
SEC. 13-14, T39N. R5E
 Govt. Lots 9+2 Nov. 1947
 Station 9

SEC. 13-14, T39N. R5E
 Govt. Lots 9+2 Nov. 1947
 Station 9

106°00'	Left	65'	Lake shore	56'	300 V. X
127°00'	"	63'	"	34"	Apex
144°00'	"	65'	"	0'	20° Vert. Angle
163°45'	"	72'	"	0'	"
184°00'	"	85'	"	0'	"
197°00'	"	100'	"	0'	150 V. X

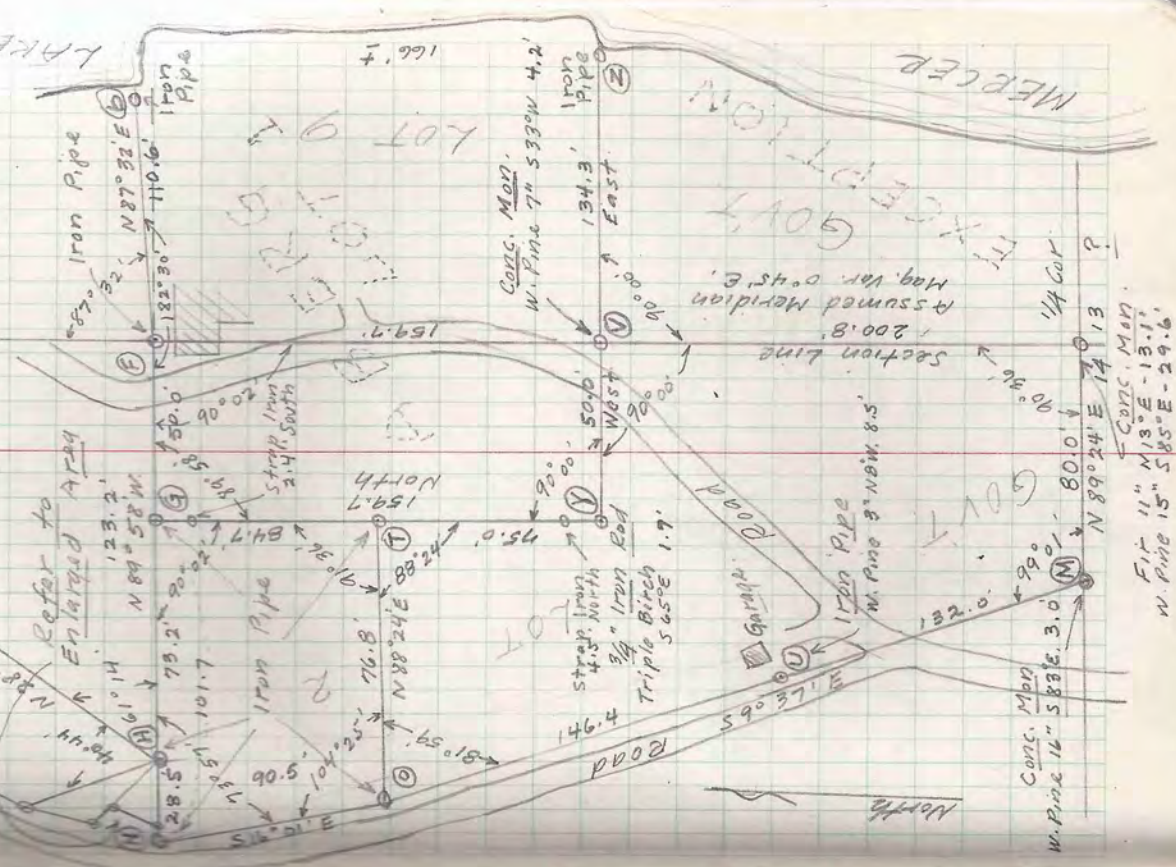
Hub C - B.S. F			
144°45'	Left	118'	DRIVEWAY
136°45'	"	105'	"
147°45'	"	78'	"
121°30'	"	38'	Bldg. NW. cor.

Sta. D - B.S.	Sta. M		
81°30'	Left	21'	SE. cor Garage
147°00'	"	3.5'	SW "
160°00'	"	23.5'	NW "



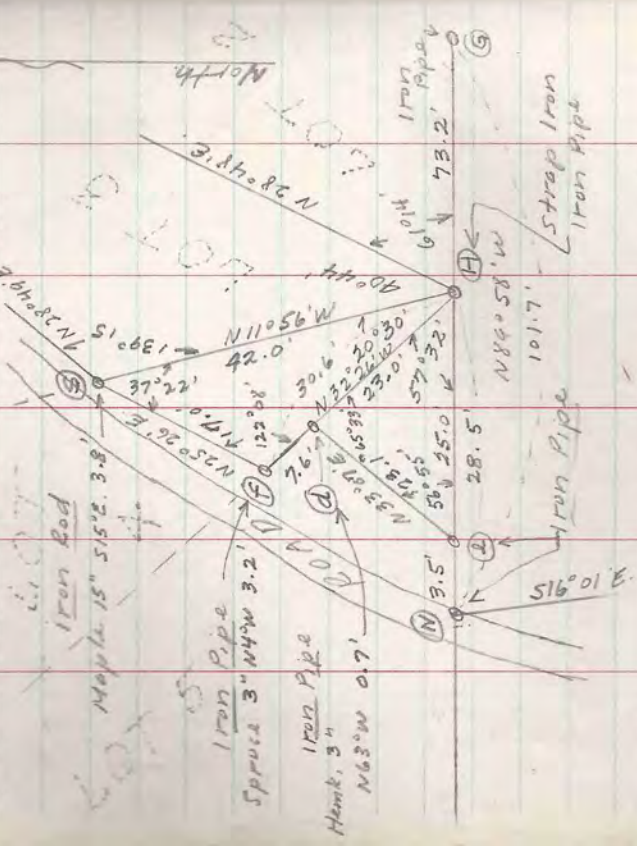
SEC. 13-14, T39N. R5E
 Govt. Lots 9+2 Nov. 1947
 Station 9

SEC. 13-14, T39N. R5E
 Govt. Lots 9+2 Nov. 1947
 Station 9



Conc. Mon.
 W. Pine 16" 583E. 3.0
 N 89°24'E 14.13
 8010' 14
 14 Cor.
 Assumed Meridian
 Mag. Var. 0°45'E.
 Section line
 200.8
 134.3' East
 Iron Pipe
 W. Pine 7" 533W 4.2'
 Conc. Mon.
 W. Pine 3" NW. 8.5'
 132.0'
 90°
 W. Pine 15" 585E-29.6'
 Conc. Mon.
 W. Pine 11" 583E-15.1'

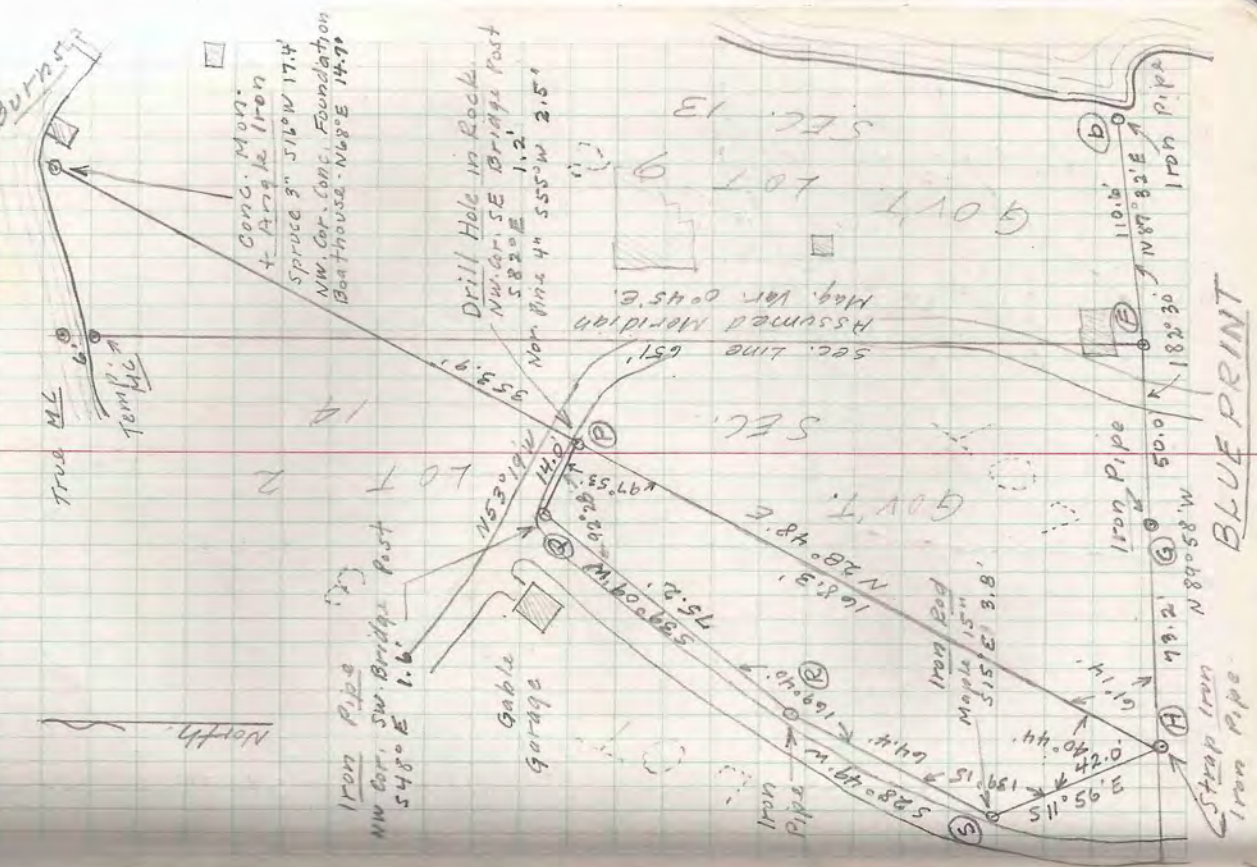
SEC. 13-14, T39N-R5E
Govt. Lots 9+2 Nov. 1947



Nearly all corners were set by off sets from random line, due to numerous obstacles such as bldgs, trees, etc. Considerable time involved - Found that most of the corners, those of which were available, had been moved. Therefore, started at SW cor. of entire tract and retraced it. - Aberg's NE take cor. is approx. 5 ft. too far North - Found original cedar stakes, at several points, which had been completely covered by fill. Original Meander Corner: between Sec. 13+14 is in lake. Although Angle Iron between Platted Lots 2+3 did not fit precisely, I accepted same as correct. Property is partly in Recorded Plat of Glen Fell.

Dr. L.H. Burns
1716 Bartlake Terrace, Chicago 26, Ill.
Bill Nailbacher - Cartographer

SEC. 13-14, T39N-R5E
Govt. Lots 9+2 Nov. 1947



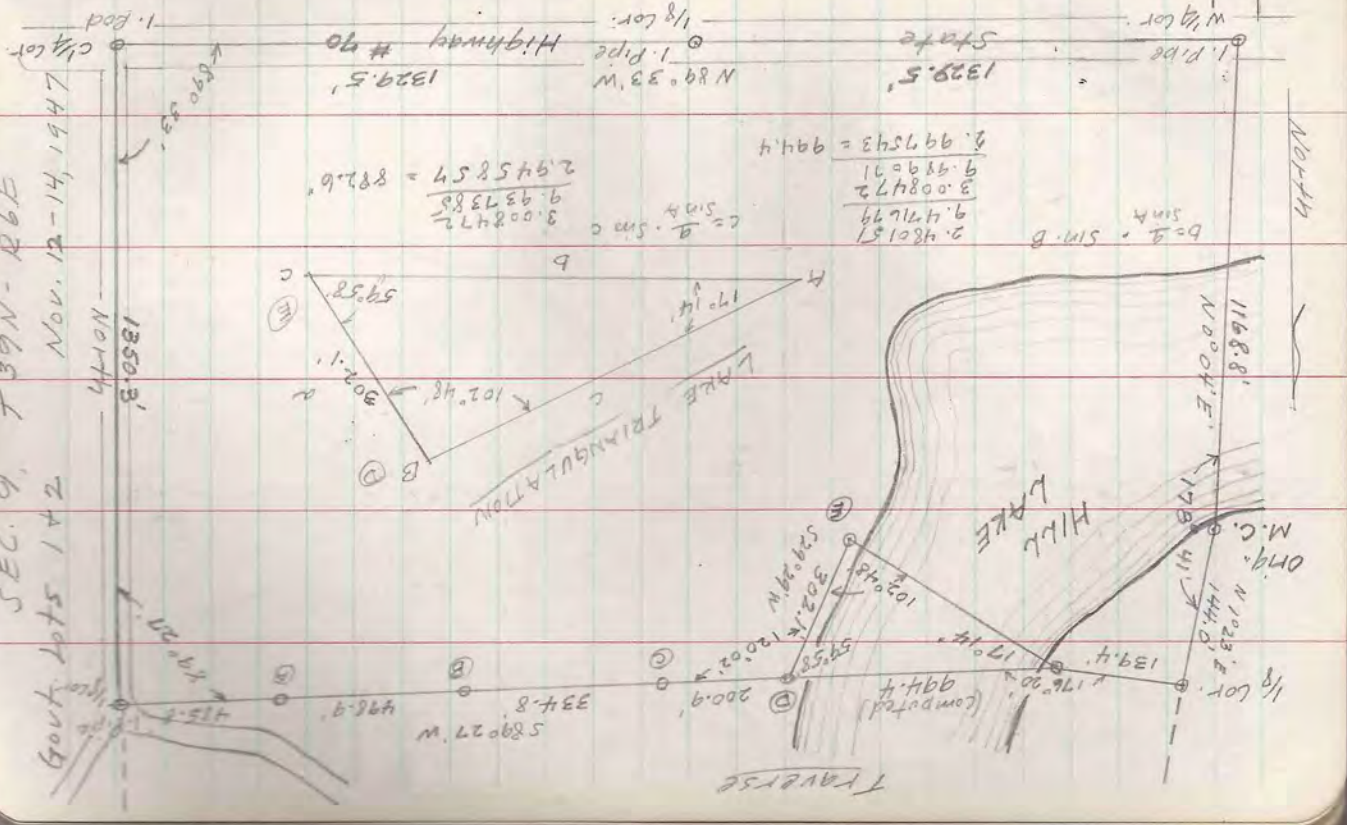
BLUE PRINT

39
Chimney
Collins

SEC. 9, T 39N-R6E
Gov't. Lots 1+2
Nov. 12-14, 1947

Station	Angle	Bearing	Dist	N	S	E	W
Sta. 1	116.88'	N 0° 04' E	1168.8	1168.8			
1/4 Cor. Sec. 9	139.4	N 0° 23' E	1394.0	1394.0			
1/2 Cor. Sec. 9	176.20	N 17° 20' E	1762.0	1311.20	506.23		
1/2 Cor. Sec. 9	176.20	N 17° 20' E	1762.0	1311.20	506.23		
1/2 Cor. Sec. 9	176.20	N 17° 20' E	1762.0	1311.20	506.23		
1/2 Cor. Sec. 9	176.20	N 17° 20' E	1762.0	1311.20	506.23		
1/2 Cor. Sec. 9	176.20	N 17° 20' E	1762.0	1311.20	506.23		
1/2 Cor. Sec. 9	176.20	N 17° 20' E	1762.0	1311.20	506.23		
1/2 Cor. Sec. 9	176.20	N 17° 20' E	1762.0	1311.20	506.23		
1/2 Cor. Sec. 9	176.20	N 17° 20' E	1762.0	1311.20	506.23		
1/2 Cor. Sec. 9	176.20	N 17° 20' E	1762.0	1311.20	506.23		
1/2 Cor. Sec. 9	176.20	N 17° 20' E	1762.0	1311.20	506.23		

SEC. 9, T 39N-R6E
Gov't. Lots 1+2
Nov. 12-14, 1947



$$\begin{aligned}
 & b = \frac{a}{\sin B} \\
 & 2.480151 = \frac{3.008472}{\sin B} \\
 & \sin B = \frac{3.008472}{2.480151} = 1.21305
 \end{aligned}$$

$$\begin{aligned}
 & 1329.5' \\
 & N 89° 33' W \\
 & 1. Pipe \\
 & Highway # 40 \\
 & 1. Rod
 \end{aligned}$$

SEC. 9, T39N-R6E

Govt. Lots 1+2

Nov. 12-14, 1947

To Set MC + 30'-80' Points

True 1/8 Line N 89° 38' E

4.51' Random

N 86° 24' W 20.1' 21.5'

N 89° 27' E 90° 23'

Angle Iron Wood Post.

50.0'

25.1' 29.38'

Iron Pipe Wood Stake

93.9' Parallel

Birch 4" East 2.9'

Birch 7" N 76° E 12'

125.9' Parallel

Iron Pipe Wood Stake

3' 91.45'

To Set 1/6 + 30'-80' Points on 1/8 Line.

Iron Pipe Wood Post 1/6

Fence True Line

Random N 89° 38' E

N 89° 27' E

91.45' N 84° 38' E

50.0'

Angle Iron Wood Stake

5.0'

51.13' W 95.8'

30' 179.11'

Angle Iron Wood Stake

50.0'

1/8 Line + Between

Govt. Lots 1+2

N 89° 38' E

50.0' 23' W

179.11'

30.0'

179.11'

50.0'

179.11'

30.0'

179.11'

50.0'

179.11'

30.0'

179.11'

50.0'

179.11'

SEC. 9, T39N-R6E

Govt. Lots 1+2

Nov. 12-14, 1947

Chime

1320.50

1321.10

1320.50

1320.70

16.50

616.50

1316.36

104.84

100.13

1320.30

1350.50

16.50

600.00

1316.36

1320.20

100.13

16.50

616.50

1320.20

1320.50

16.50

600.00

1316.36

104.84

100.13

1320.30

1350.50

16.50

600.00

1316.36

104.84

100.13

1320.30

1350.50

16.50

600.00

1316.36

104.84

100.13

1320.30

1350.50

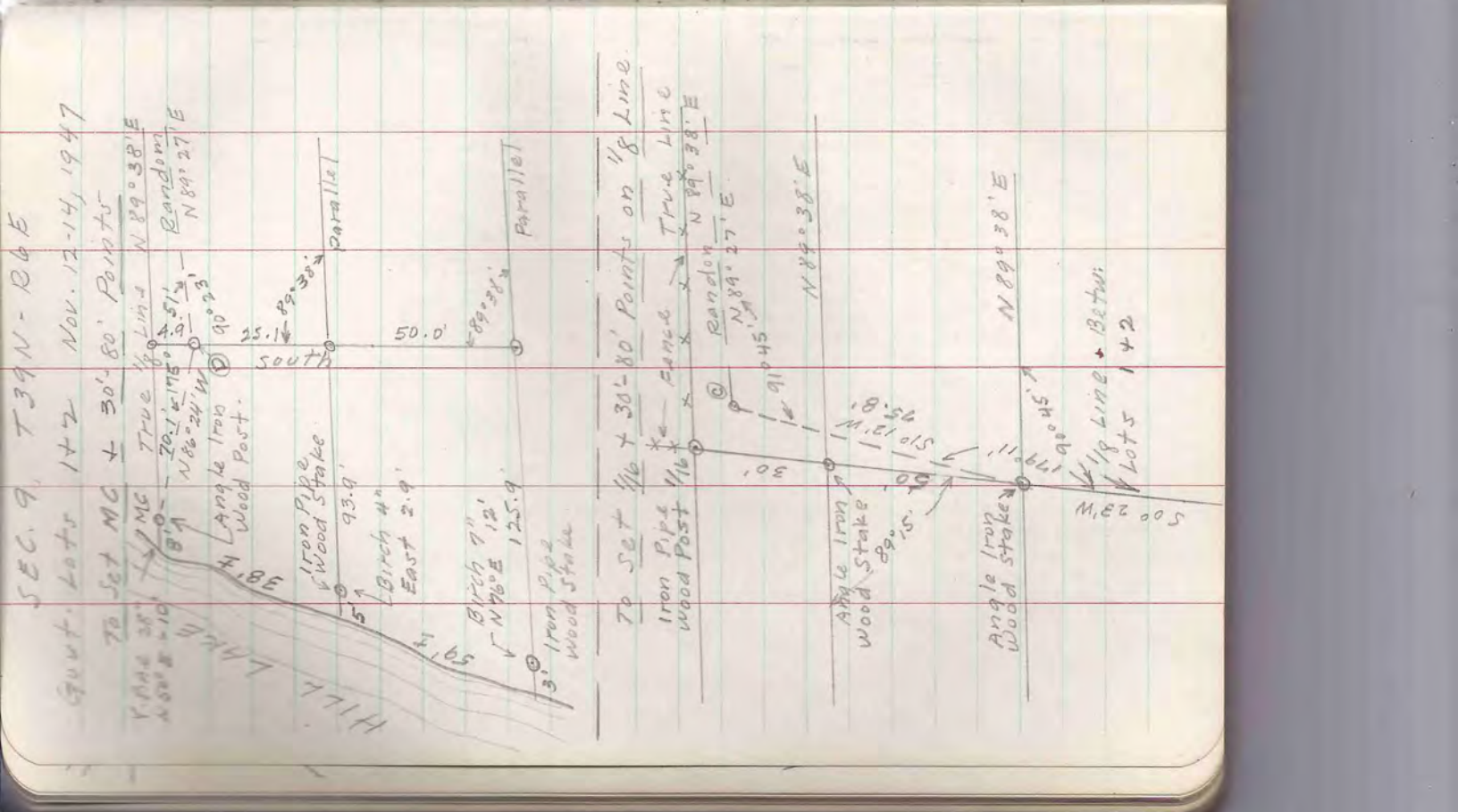
16.50

600.00

1316.36

104.84

Sta. Angle Bearing DIST N S LAT. DEPT. CO-ORDS. W E S N



C41
Collins
Chimes
James

SEC. 9, T 34N - R 6E
Govt. Lots 1 & 2 Nov. 12-14, 1947

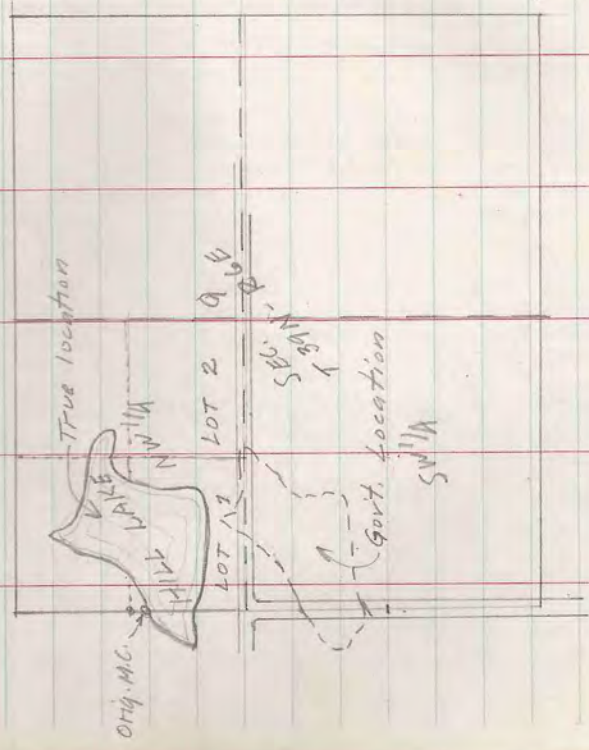
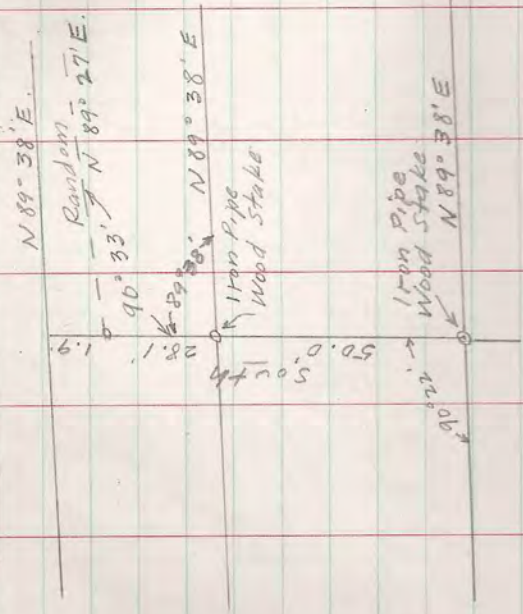
Note: Dec. 22, 1947
Newville has informed me that Chime has now conveyed all right and title to the North 80 ft. of Govt. Lot 1 to Christopherson.

Tentatively stated Christopherson Turn-a-round area in Govt. Lot 1 at 80' distance East and West and 30' North and South - Subject to Christopherson's approval. - This exception is indefinite and cannot be precisely determined without the aid of the former owner. There is some doubt as to proper classification of road - extending Northward on 1/4 line. This is presumed to be a Town Road but apparently has not been conveyed.

Govt. Notes & plat indicate that Hill Lake is in the SW 1/4 of Section 9 - I find Hill Lake in the Tamarack Bt. N 22° E - 201 ft. Tamarack not approx. 14" - Tree living. Apparently Govt. surveys ran South on this line and needed to correct notes to read North. This error confirms theory that not all section lines were run North in accordance with G.L.O. instructions.

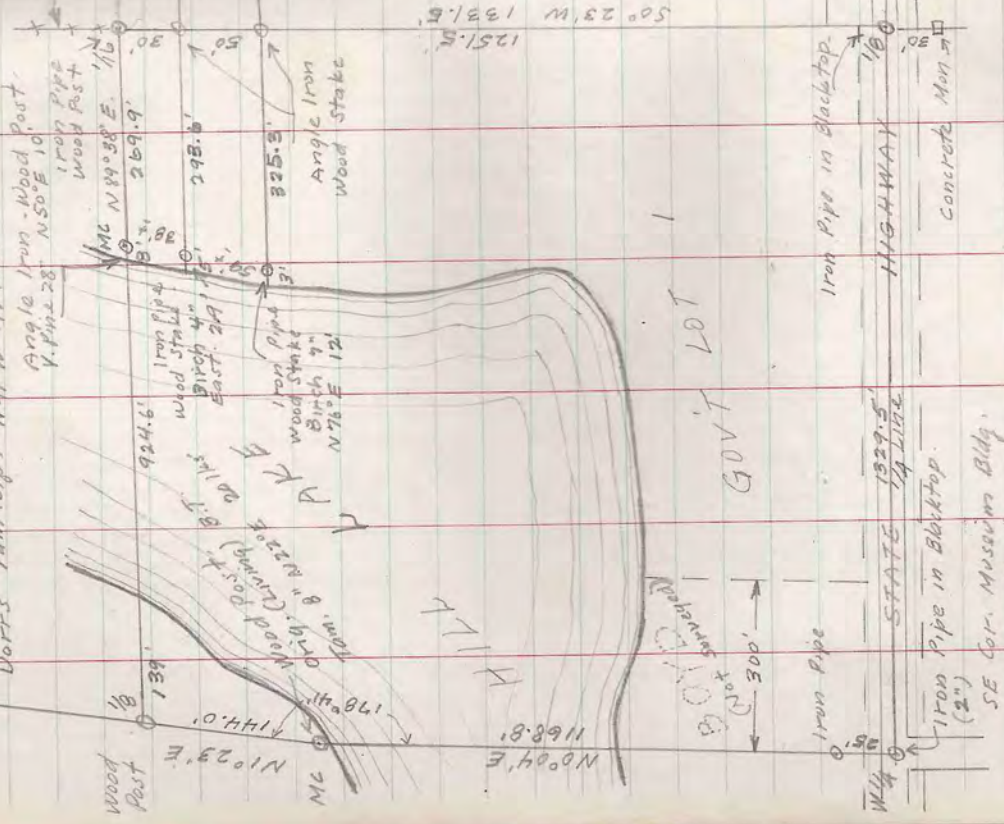
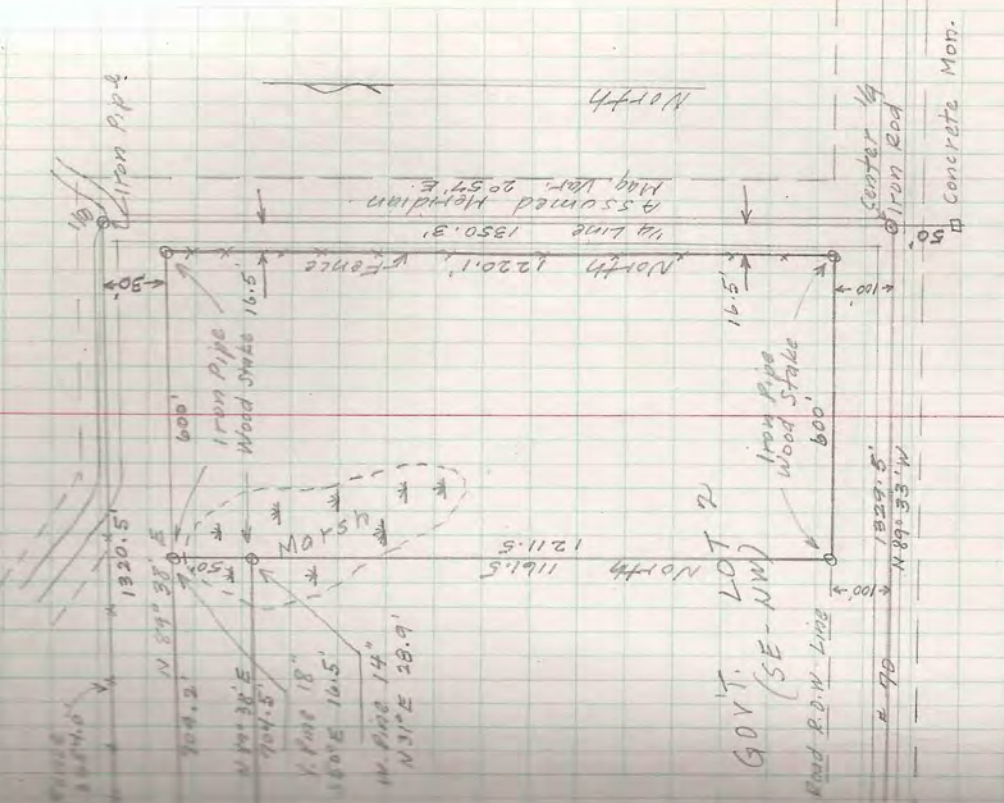
WEST END SECTION 9

SEC. 9, T 34N - R 6E
Govt. Lots 1 & 2 Nov. 12-14, 1947
30' x 80' Points - 616.5' West of 1/4 Cor.



SEC. 9, T39N-R6E
 Govt. Lots 1+2 Nov. 12-14, 1947
 Chimney Collins

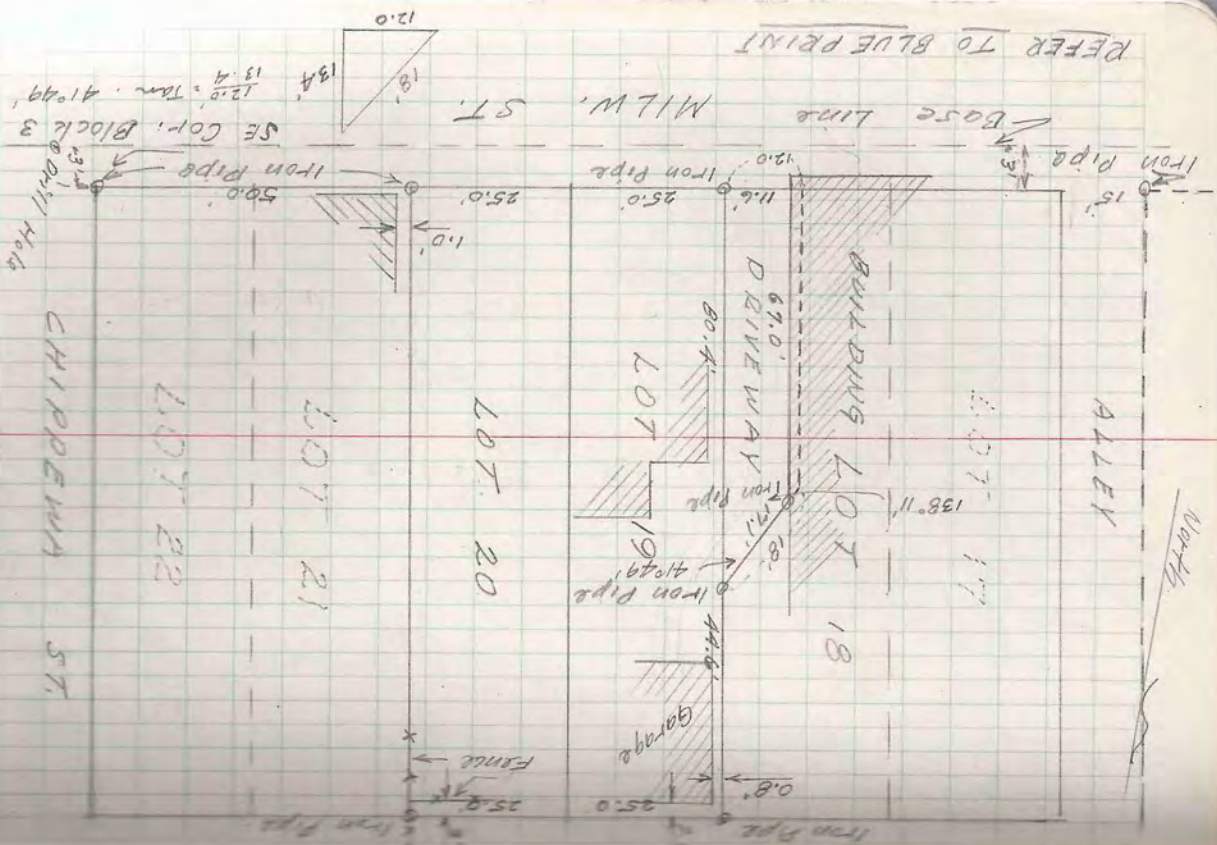
SEC. 9, T39N-R6E
 Govt. Lots 1+2 Nov. 12-14, 1947



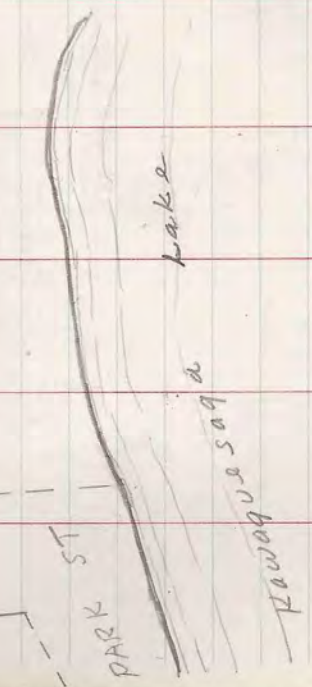
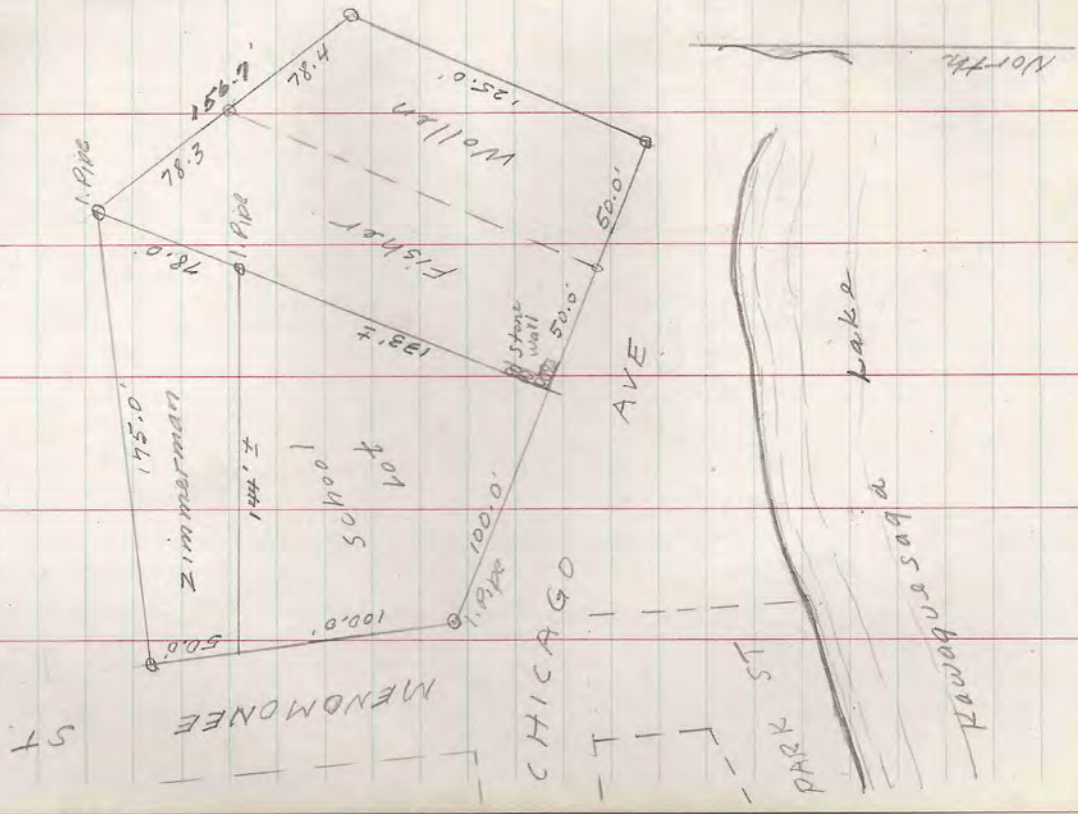
REFER TO BLUEPRINT

REFER TO BLUEPRINT

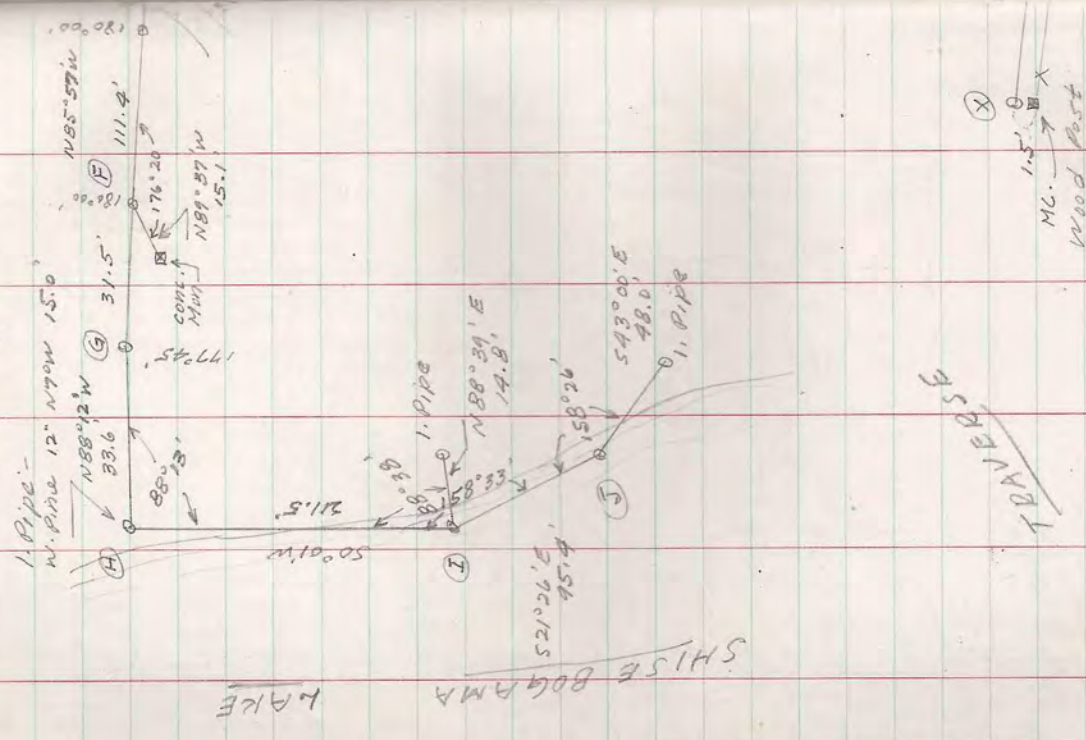
43
 Village of Minocqua, WI
 01/25/48
 Lot 18-20 + pt. of Lot 18 - Block 3
 August 5 1948



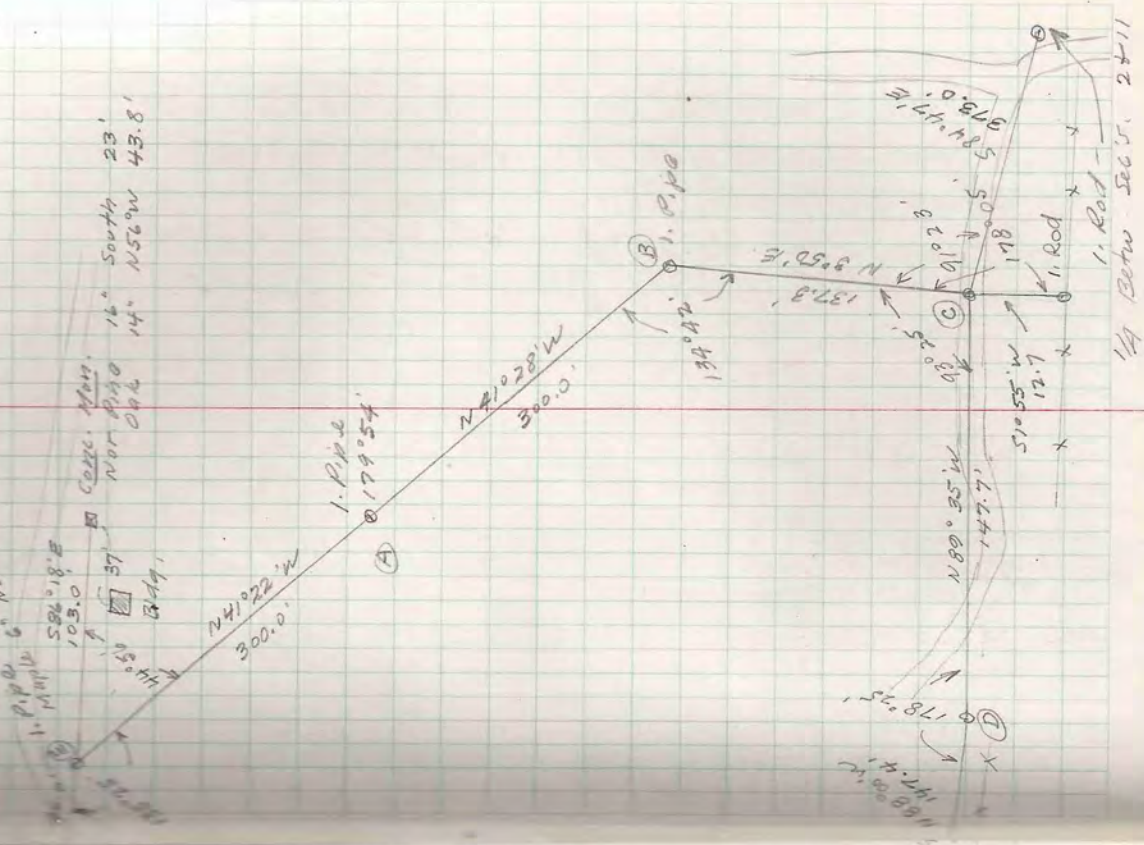
Out Lot 1 -
 Payne's First Add'n.
 to Village of Minocqua
 Aug. 11, 1948.



Gov't. Lot 4, Sec. 7, T39N-R5E
 July 26-27, 1948



EVANSON'S POINT
 Gov't. Lot 4, Sec. 2, T39N-R5E
 Bill Oliver



Surveyed by order of Bill Oliver to determine true location of lots 4 + 5 of Evenson Plat. Found record plat to be 100 ft. long on North line of lot 5 Forwarded copy of plat to L. Neville in accordance with Oliver's request.

Gov't. lot 4, Sec. 2, T39N-R5E
 July 26-27, 1948

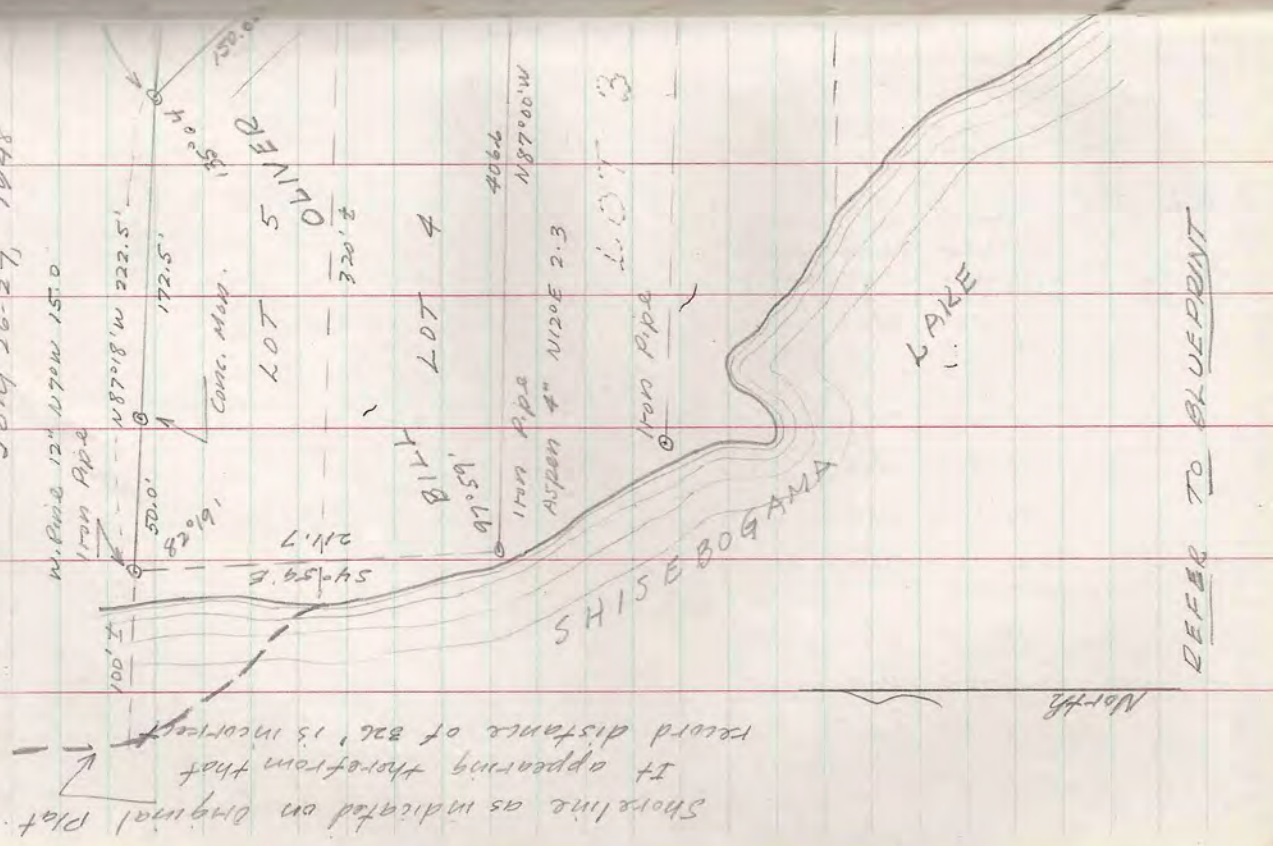
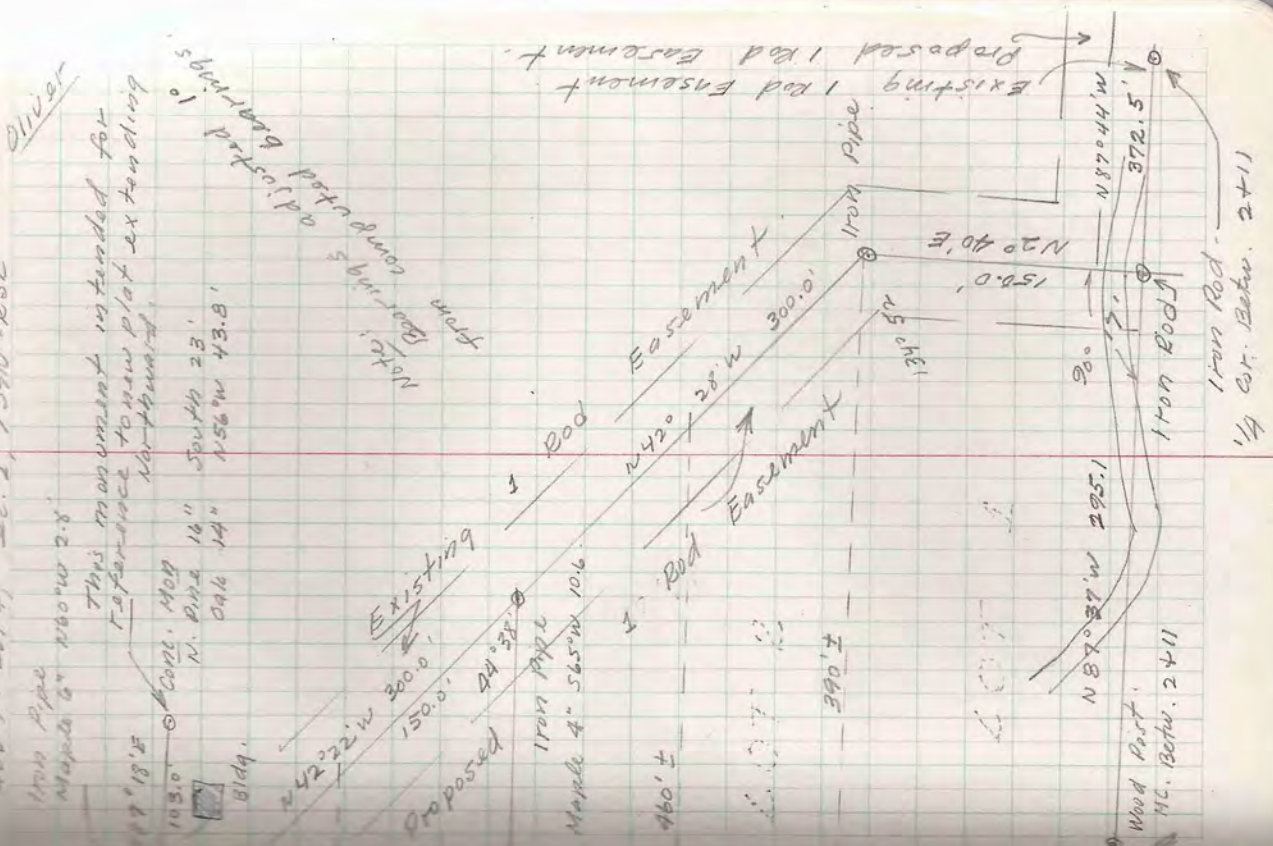
Sta	Angle	Bearing	Dist	N	S	E	W	N	S	E	W
SE cor. lot 4		N86°00'W	406.6	28.4			405.6	395.7			561.0
SW cor. lot 4							424.1	424.1			966.6
SW cor. (D) n. 5		S30°59'E	211.7		211.2	14.7	635.3	635.3			981.3
SW cor. lot 4							424.1	424.1			966.6

Evanson's Plat.
 Gov't. lot 4, Sec. 2, T39N-R5E

Sta	Angle	Bearing	Dist	N	S	E	W	N	S	E	W
SE cor. lot 4		N84°49'W	373.0	33.9			371.5	371.5			931.4
N 1/2 sec. 11		S1°55'W	12.7				12.7	12.7			931.4
SE cor. plat							0.4	0.4			931.4
N 1/2 sec. 11		N89°35'W	147.9	1.1			147.7	147.7			931.4
		N88°00'W	147.4	5.1			147.3	147.3			931.4
N 1/2 sec. 11							35.0	35.0			931.4
							40.1	40.1			931.4
MC: south of plat							38.6	38.6			931.4
							33.9	33.9			931.4
B-1. pipe		N41°28'W	300.0	224.8	9.2		198.7	170.9			931.4
A-1. pipe		N41°22'W	300.0	225.2			198.3	395.7			931.4
E-1. pipe		N85°37'W	157.4	11.1			157.0	620.9			931.4
		N88°12'W	33.6	2.2			31.4	632.0			931.4
		N88°12'W	33.6	1.1			33.6	634.2			931.4
		S0°01'W	211.5				1	635.3			931.4
		S21°26'E	95.4				423.8	423.8			931.4
		S43°00'E	48.0				35.1	35.0			931.4
I. pipe		N88°39'E	14.8	.3		14.8	423.8	423.8			931.4
							424.1	424.1			931.4
							424.1	424.1			931.4
CONC. Mon.							632.1	632.1			931.4
							0	0			931.4
N 1/2 sec. 11		N86°44'W	372.5	24.2			371.9	371.9			931.4
		N86°37'W	295.1	17.4			294.6	294.6			931.4
SE cor. plat							21.2	21.2			931.4
N 1/2 sec. 11		N86°41'W	667.6	38.6			666.5	666.5			931.4
MC-2-11							0	0			931.4
MC-2-11							38.6	38.6			931.4
SE cor. plat							21.2	21.2			931.4
N 1/2 sec. 11							666.5	666.5			931.4
							371.9	371.9			931.4
							666.5	666.5			931.4
							931.4	931.4			931.4
							666.5	666.5			931.4
							931.4	931.4			931.4
							931.4	931.4			931.4
							931.4	931.4			931.4
							931.4	931.4			931.4
							931.4	931.4			931.4
							931.4	931.4			931.4
							931.4	931.4			931.4
							931.4	931.4			931.4
							931.4	931.4			931.4
							931.4	931.4			931.4
							931.4	931.4			931.4
							931.4	931.4			931.4
							931.4	931.4			931.4
							931.4	931.4			931.4
							931.4	931.4			931.4

45

Bill Oliver



REFER TO BLUEPRINT

North

From Otlay Fence - North along old U.S. High. 51

- 9740 - Fence extends West
 - 1973.3 - Spike - High Dept Sw. Cor Pit
 - 2143.2 - R.A. Spike - True Sw. Cor. Pit.
 - 2237.2 - Lag. Bolt - High Dept. NW Cor. Pit.
 - 2407.5 - R.A. Spike - True NW Cor. Pit.
- Note: - South line of Section 14 is approx. 250 Ft. South of Otlay Fence. Existing fences in this area are not on true lines.

NE - Cor. Gravel Pit

Along extended North Line - 73.7' East to 6" Oak Tree Vert. & 21056' + (68.3) & correction.

Along extended East Line - 54.8 North to 1 1/2" Iron pipe Vert. & 9057' + (54.0) & correction.

South-along East Line (Stadia) H.I. 4.2'

- 114 Ft.
- 90 "
- 60 "
- 34 "

NE Cor. Gravel Pit - B.S. West along North Line of Pit - Angler to the right.

Break at point of floor and slope (Stadia)

- 195° 58 Rt. 30' .45'
- 219° 30' 54' 3.73'
- 255° 00' 75' 3.15'

Rim of cut

- 20° 30' Rt. 68' Vert & 11025' +
- 55° 31' " 48' " 10° 43' +
- 75° 01' " 47.5' " 9° 00'
- 119° 16' " 54' " 40° 28'
- 150° 52' " 62.5' " 16° 21'
- 185° 52' " 64' " 21° 32' } Shallow cut on top of bank extends Easterly
- 195° 45' " 85' " 14° 07'
- 201° 52' 76' " 12° 23' } approx. 50'
- 217° 16' 98' " 11° 21'
- 247° 26' 116' " 11° 29'
- 260° 06' 155' " 8° 17'
- 270° 00' 188' " 6.70' - To temp. sta (X)
- 53° 53' Left 118'

Sta. (X) - B.S. NE Cor. Pit. Angler to Right. (Stadia)

- Rim of Cut 120'
- 138° 45' Rt. 160'
- 156° 15' " 183'
- 176° 45' " 200'
- 196° 40' " 197'
- 216° 15' " 184'
- 236° 30' " 191'
- 256° 10' " 194'

Gravel Pit Road

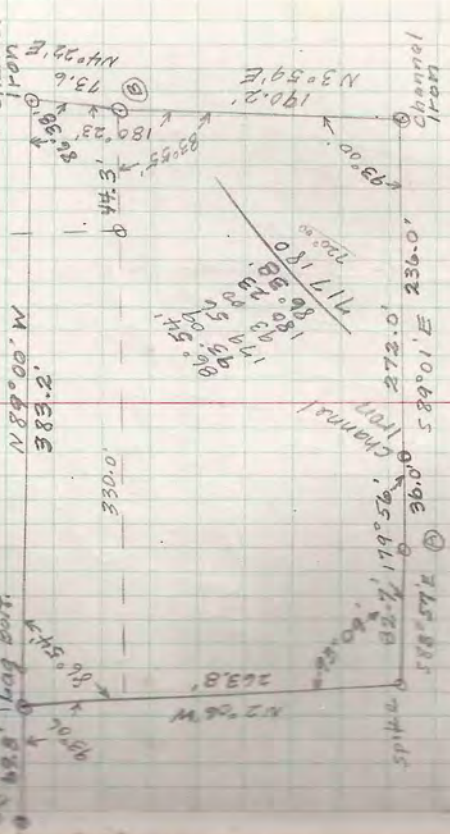
- 262° 00' 265'
- 269° 00' 182'
- 263° 15' 133'

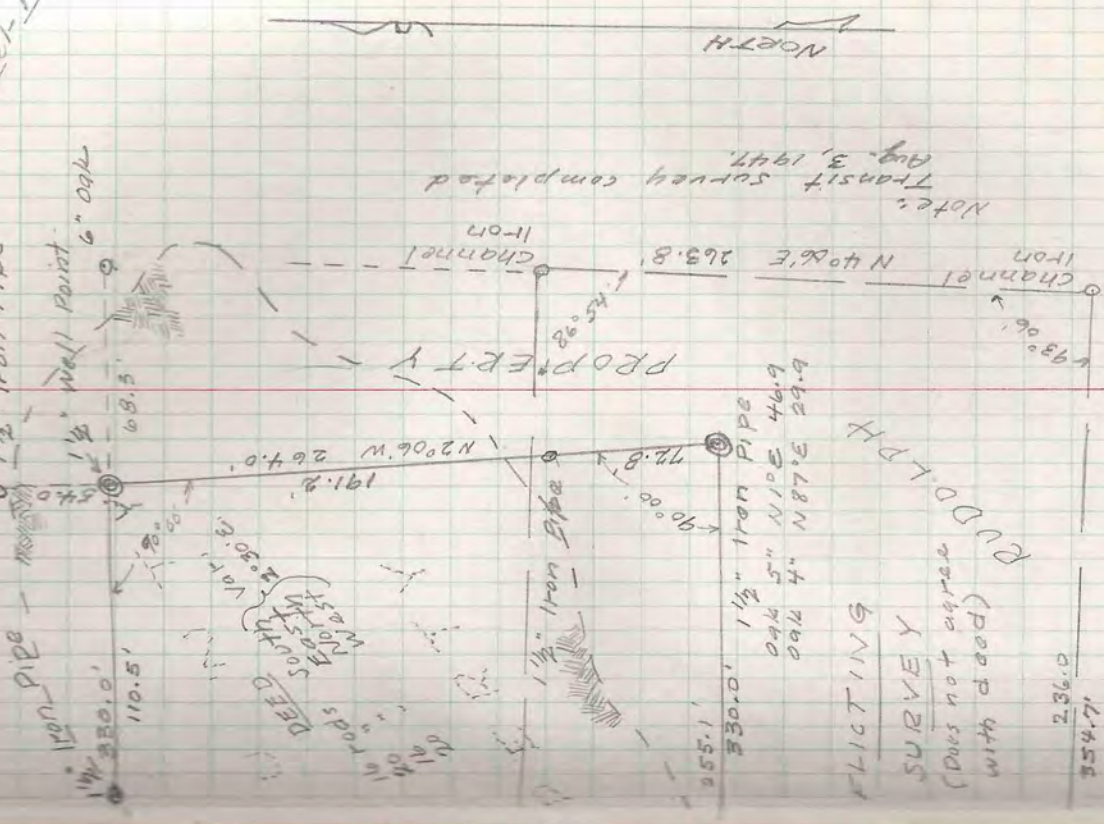
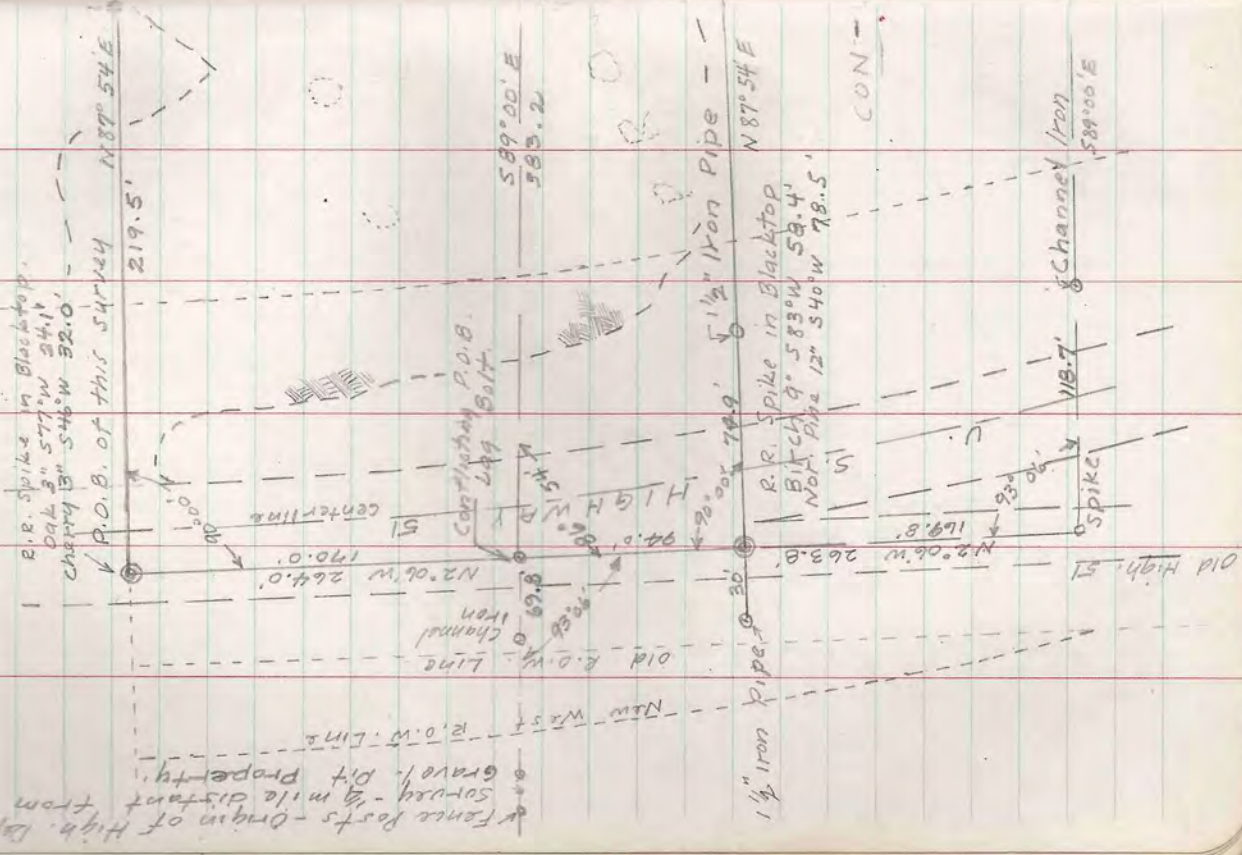
Rim of Cut

548' 45' 82'

TRAVVERSE

HIGH. - DEPT. LOCATION OF DEED





Notes:
Transit survey completed
Aug. 3, 1947

FLICTING
SURVEY
(Does not agree
with deed)

236.0
354.7

REFER TO BLUEPRINTS

NOORTH

SEC. 14, T40N-R6E

SEC. 14, T40N-R6E

53

NE-SE

OCT. 1947

OCT. 1947
G. Budolph
Grovel
Pit

Oct. 15, 1947 -
Found the Orig. Govt. B.T.
for the 1/4 corner between

Sections 13 and 14. - Marks plain.

Also found what I believe to be
the remains of the orig. stamps
for the corner common to

Sections 13-14-23-24.

The precise 1/8 corner (NW corner
of the NE-SE) will probably fall
somewhat South and several
hundred feet East of the

point referred to for many years.

The true North-South 1/8 line
will fall several hundred feet
of U.S. Highway 51. The approx.

location of U.S. 51 having been indicated
by the High. Dept. as the 1/8 line
for the past 20 years.

However, the above should not
affect the location of the County
Deed, it being obvious by fact of

P.O.B. of County Deed was relocated
by reference to Highway Dept. Records -
(Maps & Conveyances), together with
local comment.

NE-SE

OCT. 1947

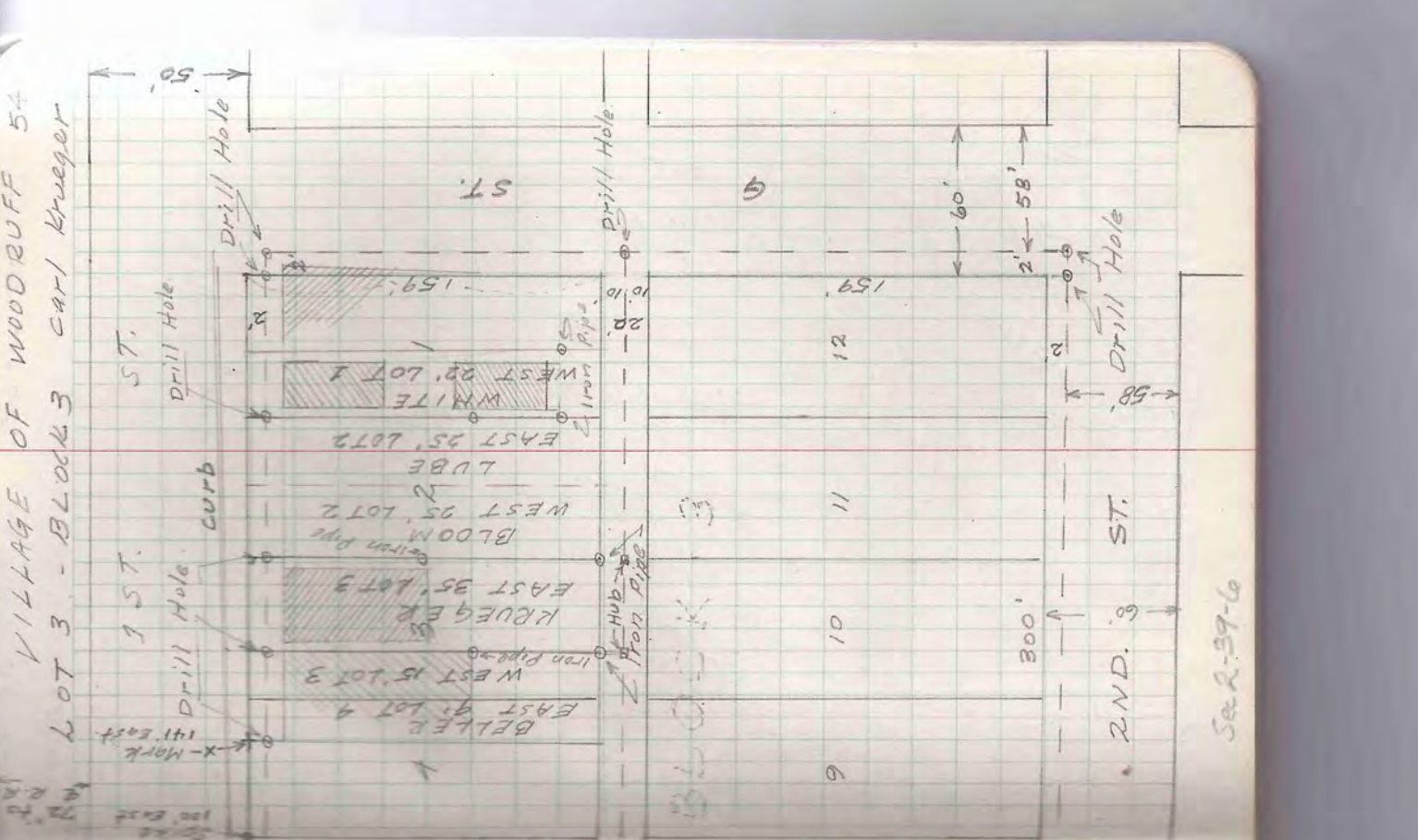
OCT. 1947
G. Budolph
Grovel
Pit

existing records, maps,
witness, and extensive use
that the location, as surveyed,
has been accepted as true
and proper for many years.

In the event precise survey
is made of Section 14 - -

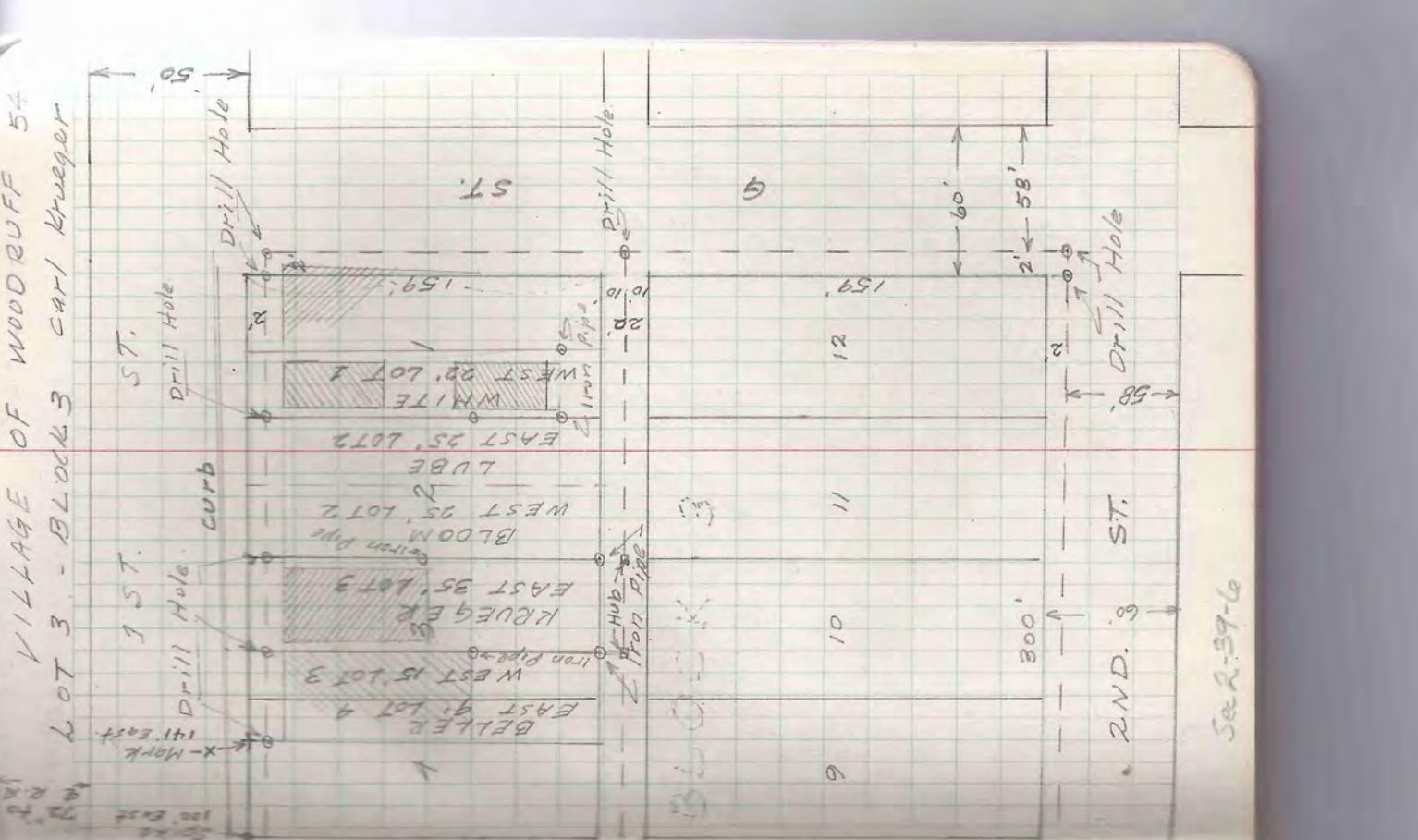
it will be found that the
Grovel Pit, to the largest
extent, is actually in the NW-SE
However the property having
been openly used and improved,
without interference, for many
years, the Budolphs will
probably be able to assert
adverse claims. The error in
location of the 1/8 line is not
the responsibility of the
property owners, the owners
having innocently accepted
the records of a responsible
agency.

VILLAGE OF WOODRUFF
 July 27-28, 1948



See 2-39-6

VILLAGE OF WOODRUFF
 54



See 2-39-6

VILLAGE OF WOODRUFF 55
 Carl Krueger

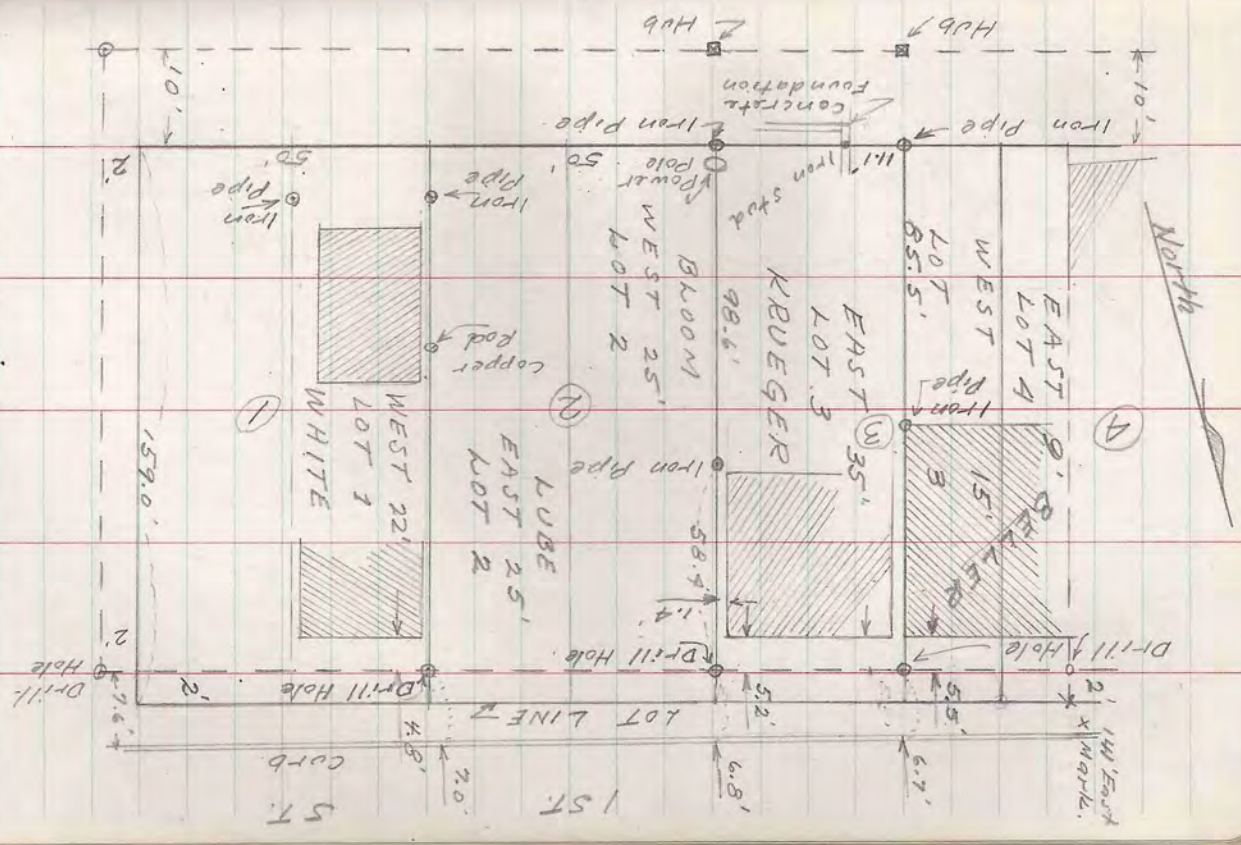
LOT 3 - Block 3

BLUE PRINT

Drill hole at NW. cor. Block 3 - 5.5' North to curb.
 Drill Hole SE. cor. Block 3
 60' East side of ST.
 160' Fence extends N-S
 210' "
 360' West side H ST.
 420' East side H ST.
 644.8' 1. pipe near E. Bdry. W. of Woodruff.
 From above 1. pipe
 55.9' South along section line - Wood Hub
 129.5' - 1. pipe to Brass cap W

Found Bellers Bldg, to coincide with the West line of the East 35' of Lot 3 - Block 3
 X Mark in walk and spike are on ST line.

VILLAGE OF WOODRUFF
 July 27-28, 1945



Outlot "A" & Ernest Lange Lot 56
 Part of Govt. Lots 1 & 2 Sec. 30, T. 40N., R. 7E.

Plot of Arbor Vitae Shores
 Set by - ?
 Date - ?

Located Dig. Wood Stakes
 SW Cor. Lot 7
 SW " " 9
 SW " " 10
 SW " " 11
 SW " " 12
 NE Cor. Ernest Lange Lot " X
 SE Cor. " " " " " " X
 SE Cor. Lot 15
 Stake SE Cor. Lot 16 out of place.

Fence extends SW & SE from NE
 corner Metes & Bounds Description
 Fence also extends West from
 said corner.
 Re-established North line of
 Outlot A & Ernest Lange Lot
 from existing original lot stakes
 Distance between stakes 282.5'
 Magnetic Bearing N 88° 15' E.
 30' Lot Stake to Lake Shore,
 30' from NW Lot Stake to E
 Town Road.

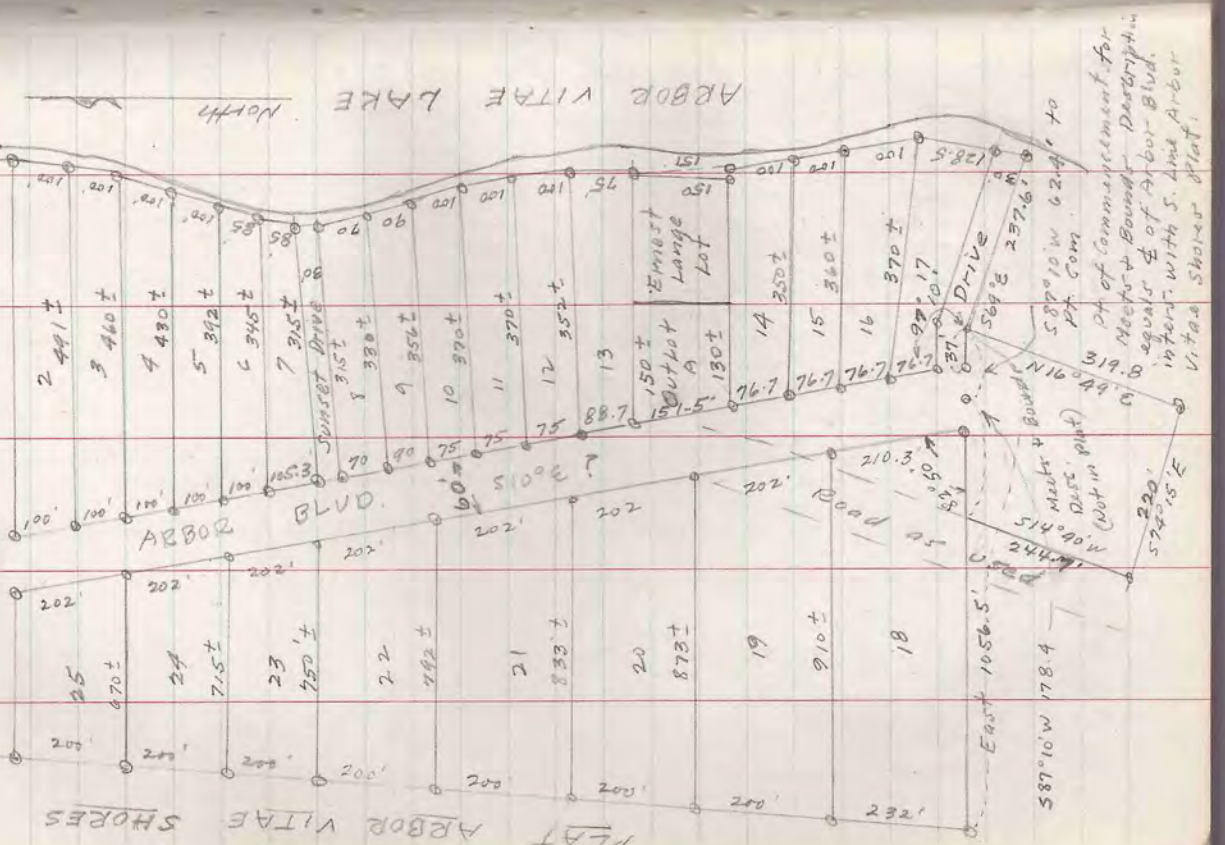
Plot scales approx. 340' against
 M.D. of 282.5
 South line Plot scales 287'
 Record distance 237.6 measured & verified
 This confliction indicates that all
 E-W record distances are 50 or more
 in excess of actual distance.

My measurement from S. Line Plot
 to NW Cor. Outlot A along East line
 of Platted St = 30' ± excess.
 Total Record Plot Distance along
 West line of road = 1624.3
 Total Record Plot Distance along
 East line of road = 1597.3
 30' ± excess in my M.D. compensated by
 27' deficiency in record plot distance.

Diff. - 27.0

Will recommend survey of entire N 1/4 & Lange Lot
 with tie-in to MC together with blueprint of survey
 giving corrected M. & B. Description.

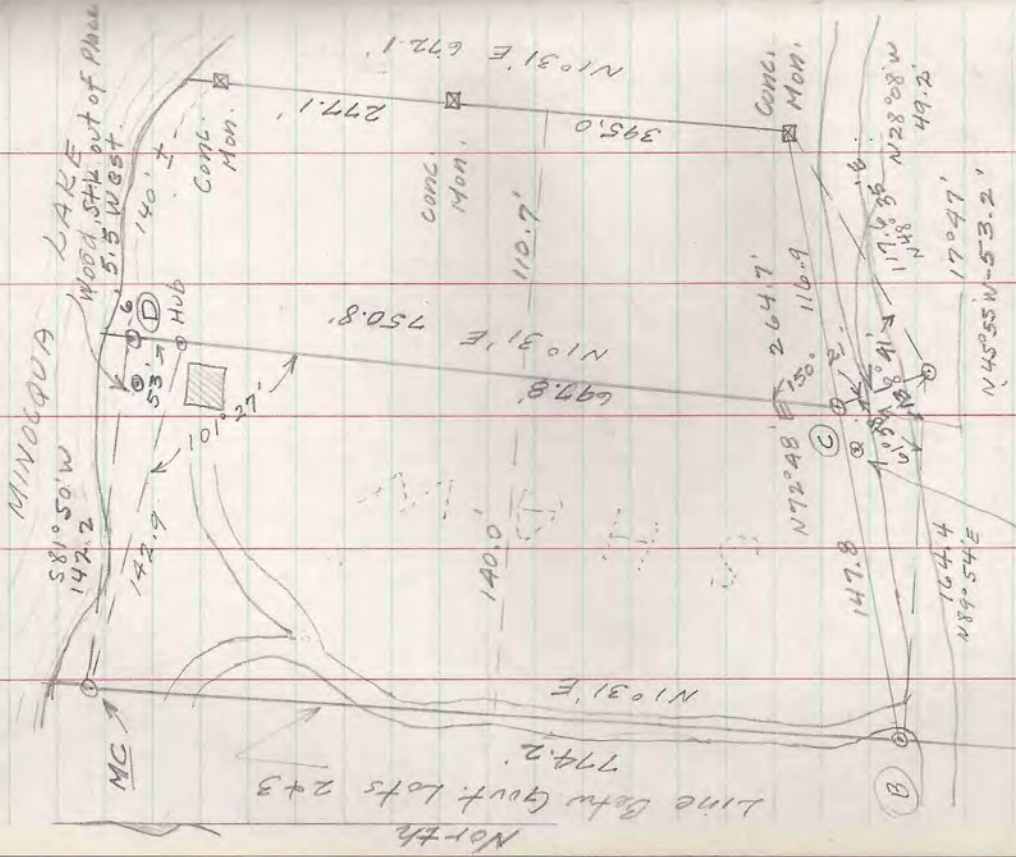
For Mr. Small - Racine, Wis.
 1/4 Cor. West 1100.4 -
 539.4



Plat of Commitment for
 Metes & Bounds Description
 equal to of Arbor Vitae
 interest with S. Line Arbor
 Vitae Shores Plat.

Pt. of Govt. lot 2
Sec. 23, T39N-R6E

West 140 Ft. Govt. lot 2
June 23, 1949



Stake-out of place
16.4 West x 1.6' South of line.
Refer to Book 5- Pages 25-31
for Preliminary Notes

SW cor. lot 2
A

B

C

D

Hub

Concl. Mon.

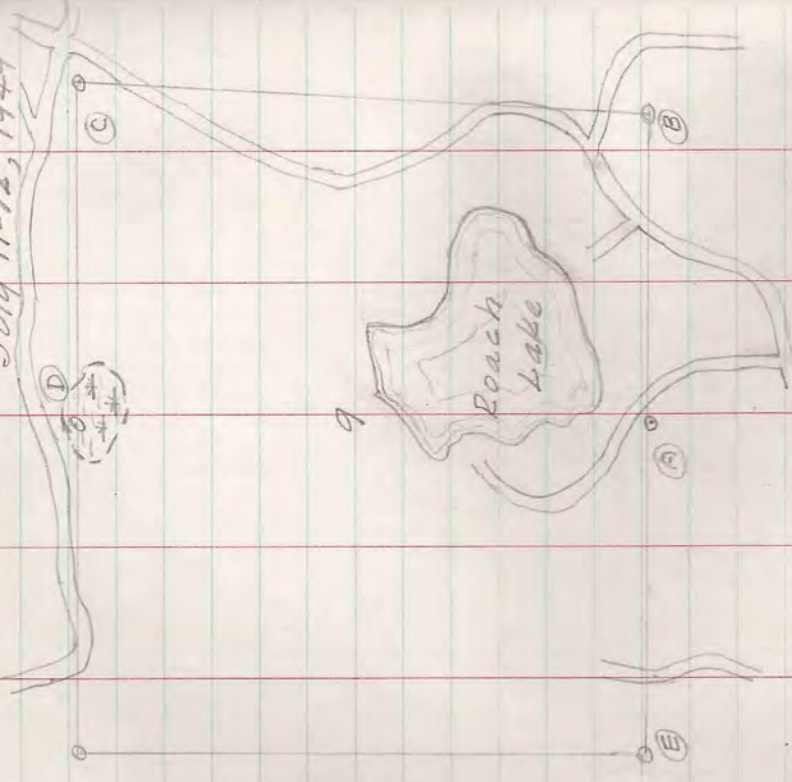
MC

Sta. Angle	Dist	N	S	E	W	N	S	E	W
SW lot cor.	N 88° 54' E	164.4	0.3	164.4	164.4				
SE lot cor.	N 28° 08' W	49.2	43.4						
h									
h									
SE lot cor.									
Concl. Mon.	S 72° 48' W	264.7	78.3	78.3		252.8			
h									
h									
SE lot cor.	N 72° 48' E	147.8	43.7	43.7		141.2			
SE lot cor.									
h									
h									
SE lot cor.									
SE lot cor.	S 77° 02' E	142.9	32.8	32.8	139.3				1309.5
Hub									
SE lot cor.	S 1° 31' W	697.8	697.6	18.4					1336.3
Hub									
SE lot cor.	N 1° 31' E	53.0	53.0	1.4					2033.9
Hub									
NE lot cor.	S 81° 50' W	142.2			140.7				1283.3
NE lot cor.									
MC									
MC									

- (A) Iron Pipe + Wood Post - Oak 3" N80°W - 5.5' 4" S8°E 15.5'
- (MC) Iron Pipe + Alum. Pipe - Oak 4" N20°W 8.0'
- (B) Iron Pipe + Alum. Pipe - Oak 5" N62°W 16.1'
- (C) Oak 4" N56°E 8.3' 4" West. 6.8'
- (D) Oak 3" S94°W 12.9' 4" S84°E 6.9'

1371.4	2071.6	1351.1
1207.0	2071.3	1211.8
1230.2	2033.9	1230.7
1207.0	1999.3	1211.8
1207.3	2071.3	1351.1
1181.6	1999.3	1309.5
1371.4	2071.6	1351.1
1207.0	2071.3	1211.8
1230.2	2033.9	1230.7
1207.0	1999.3	1211.8
1207.3	2071.3	1351.1
1181.6	1999.3	1309.5
1371.4	2071.6	1351.1

July 11-12, 1949



Cruising - July 16, 1949

- (A) 5 1/4 Orig Trees - No Post
- (B) SE Sec. Cap. - Remains Orig. Birch Stubs. No Marker - Plain Post approx. 5' West of true corner. Blazed lines extending East - West + South.
- (C) W.C.D. Brass Cap. - Does not fall at Govt. Bearing + Dist. from Orig Stub
- (D) Squared Picket in Swp.
- (E) W.C.D Brass Cap. - NW. orig. Maple B. Cap. does not fall at Govt. Bearing from Orig Tree.

50
August
Kamke

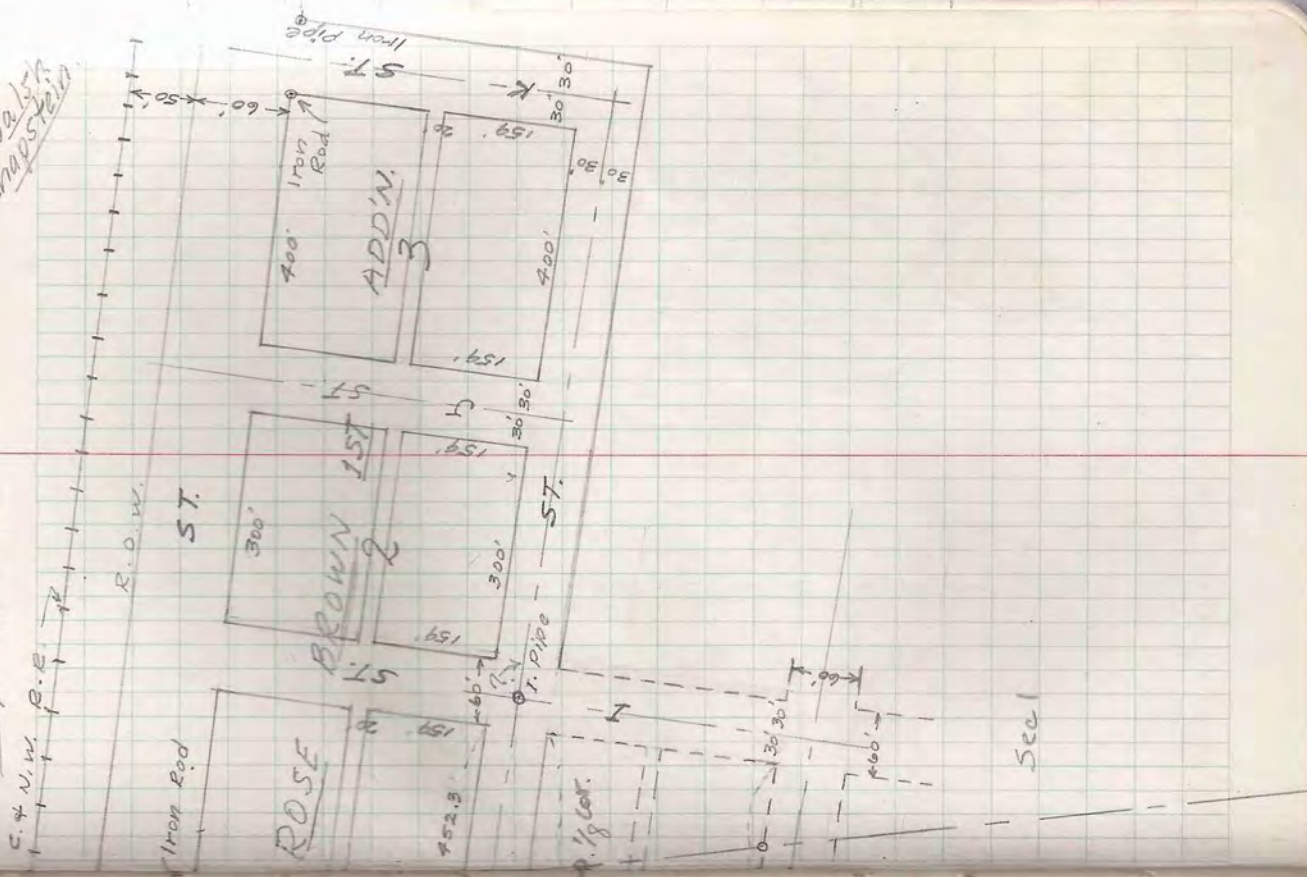


(A) Set Iron Rod for Temp. 5 1/4 Sec. 9

Set this point at record bearing and distance from living Birch and old Maple Stub. Maple and Birch reversed in position.
 No visible scribe marks.
 Maple stub blazed - but facing rotted out - opened Birch and found burned facing at base - No visible marks.
 Old blazed line extending East + West - More recent blazes extending North. Ran compass line North to Lake. South line Section 9 should be run and Temp. 5 1/4 tested on proportionate basis.

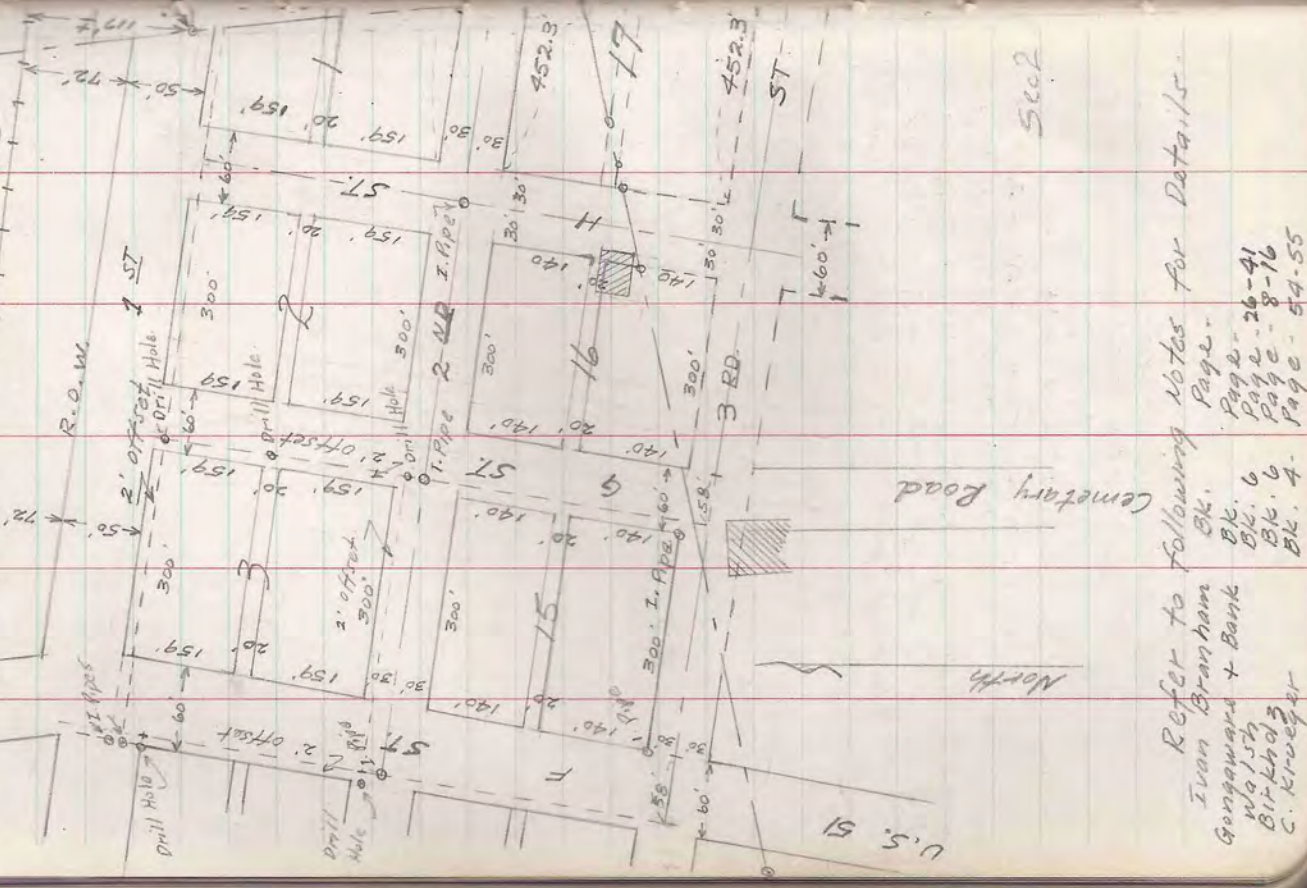
59
WALSH
Knapston

Village of Woodruff



Sec 1

July August '49



Sec 2

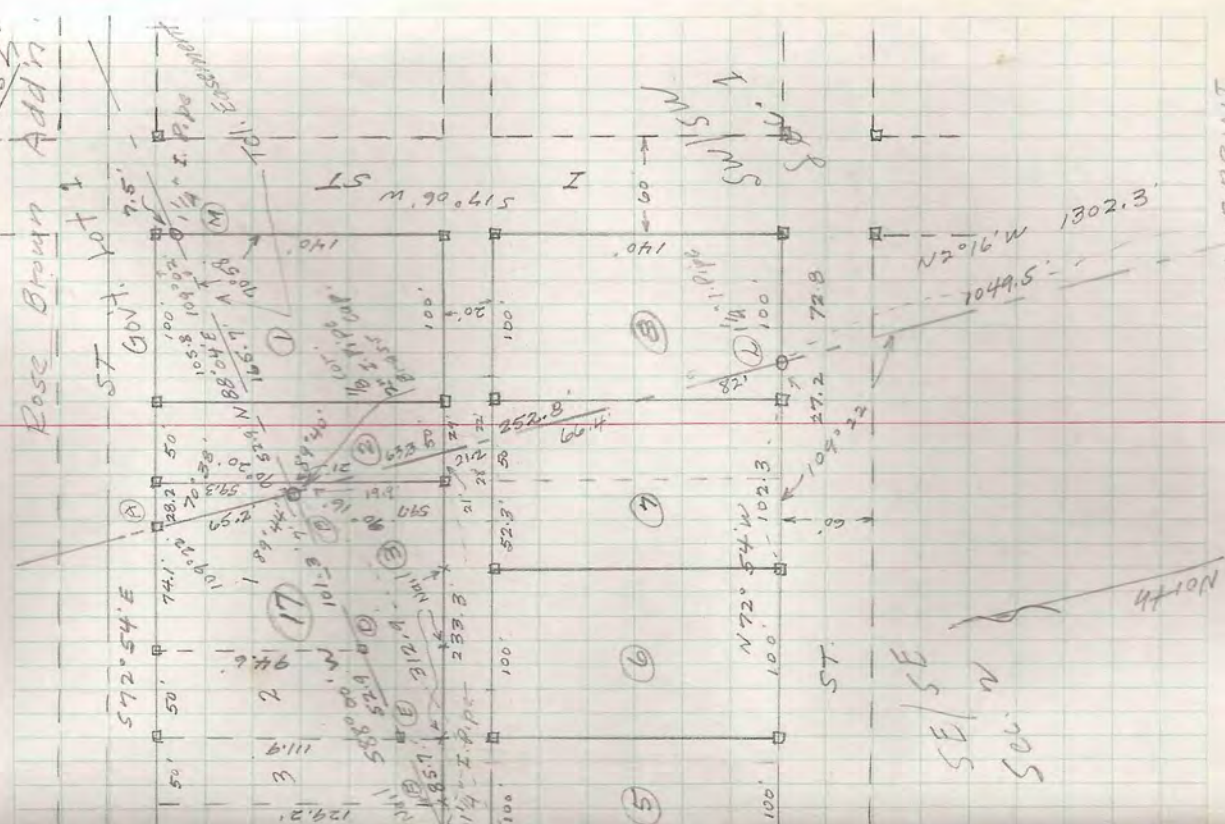
Refer to following Notes for Details.

Ivan Branham	Bk.	Page.
Gungawars + Bank	Bk. 6	Page 26-41
Walsh	Bk. 6	Page 8-16
Bitkholz	Bk. 4	Page 54-55
C. Krueger		

Oct. 1949

Village of Woodruff

Knapp 60
W 15.5'



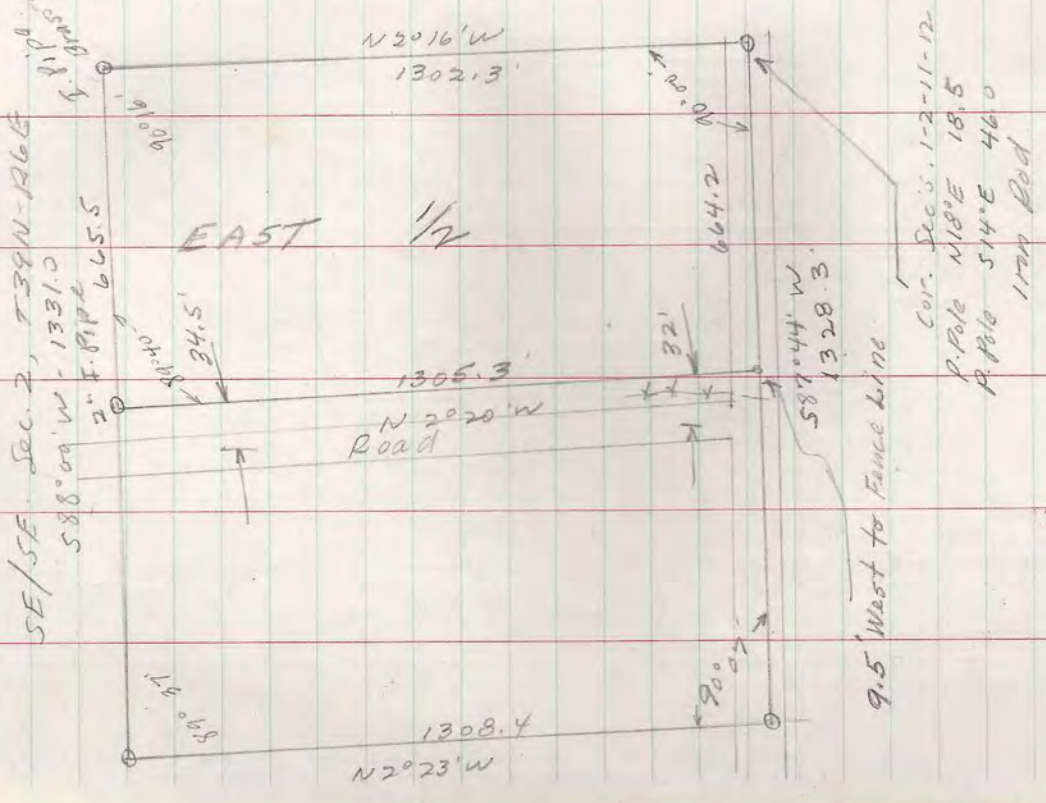
52° 20' E

Travelled Road

37' West of J, along St. H to gravel road South.

From E
12.5' West to Fence
36.5' to Road
34.5' to Road
at 44'

October 7, 1949



to Village of Woodruff Knappstein

Sta	Angle	Bearing	Dist	Lat	Dist	Lat	CO-ORDS
				N	E	N	E W
A		$S 19^{\circ} 22' E$	65.2	61.5	21.6	0	0
B		$S 70^{\circ} 54' W$	312.9	102.4	245.7	163.9	274.1
C		$S 70^{\circ} 54' W$	101.3	33.1	95.7	61.5	21.6
D		$S 70^{\circ} 54' W$	154.2	50.4	145.7	44.6	74.1
E		$S 70^{\circ} 54' W$	207.1	67.7	195.7	61.5	21.6
F		$S 70^{\circ} 54' W$	260.0	85.0	245.7	61.5	21.6
G		$S 70^{\circ} 54' W$	63.5	20.7	60.0	146.5	224.1
H		$S 70^{\circ} 54' W$	289.1	94.6	273.2	153.9	274.1
I		$S 19^{\circ} 26' E$	63.6	60.0	21.2	360.0	578.7
J		$S 19^{\circ} 26' E$	63.6	60.0	21.2	360.0	578.7
K		$S 19^{\circ} 22' E$	252.8	238.5	83.8	61.5	21.6
L		$N 70^{\circ} 58' E$	165.7	54.0	156.6	900.0	105.4
M		$N 70^{\circ} 58' E$	165.7	54.0	156.6	61.5	21.6
N		$N 70^{\circ} 54' E$	73.0	23.9	69.0	163.9	274.1
O		$N 70^{\circ} 54' E$	73.0	23.9	69.0	140.0	205.1
P		$N 70^{\circ} 54' E$	11.9	3.9	11.2	160.0	262.9

South line 2ND. ST. assumed East + West for purpose of about comp. in transit.

October 7, 1949

Found considerable difference in the alignment of the Orig. Village of Woodruff and the Rose Brown Addition.
Carried survey thru the Village from Hi. St East and from R.R. Tracker South in order to fill out Block 17.

Found a relatively small closing difference between Orig. record, and data compiled by this survey.

Along lot 1 - Block 17
st line orig. this survey 74.1
1/2 line 76.6 74.1
3/4 line 103.9 101.3
Sec line 63.7 65.2

West line Block 17
orig. This survey 165.1 163.9

Reference
Utility District Plat - Vol. 137 - Page 454
May - 1940

Wm. Tel. Co. Easement
Vol. 119 - Page 144
July - 1936

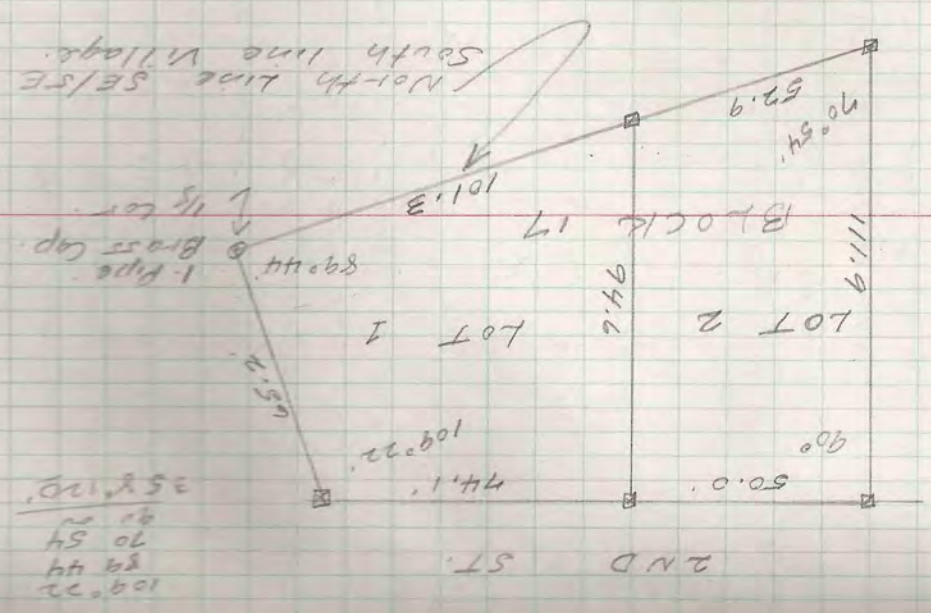
Woodruff Orig. Plat. Vol. 1 - Page 19

Rose Brown Addn. Vol. 6 - Page 3

Village of Woodruff

Part of Govt. Lot 7 &
SW/5th Dec. 1. T39N-26E
SE/5E Sec. 2, T39N-26E

Knapsack
Hildor Hansen
Walsby
Hildor Hansen



Hildor Hansen Lots

PREFER TO BLUEPRINT

34410N

It is the intention of this survey to prepare a plat suitable for recording -
 However, other circumstances may thwart the owner's intention.

The owner may find it impossible to acquire the property necessary for the extension of the proposed alley. The shortage between record & measured distance in Lot 1, Original Village was allowed, totally in Lot 2.

I assumed that the original Survey was carried to the South & East lines, the fractional distances being adjusted along these lines.

Recommended replat of the Rose Brown 1st Add'n, due to variation of alignment along the North line thereof and along alley. Record distances do not agree with record distances of original Village.

63
 Walsh
 Knappstein
 Add'n. to
 Village of Woodruff

