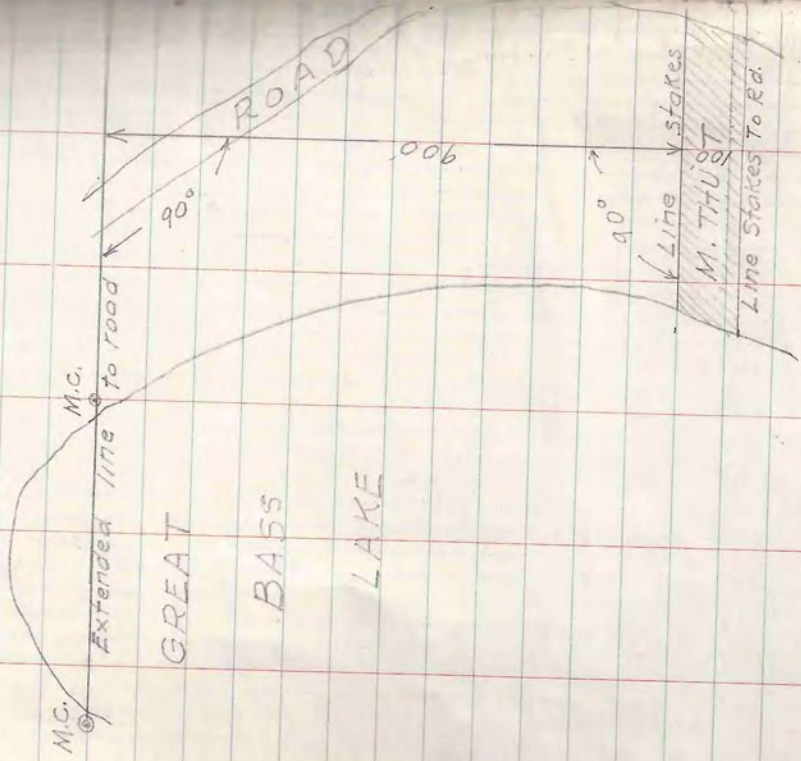


Michael Thut
 739 N-RAE SEC. 13 LOT 1
 Chicago Ill.

Michael Thut
 616 W. Wellington Ave.
 Chicago 14 Ill.



Scott Inst
 57 Germain
 St. Burgoynes
 Aug. 17-18 '51

1	12 7
2	13 8
3	16 5
4	"
5	"
6	16 5
7	19 0
	7 5
	15 5

Did not run true line

Vol. 190 Pg 335

T42N-R7E SEC. 17 LOT 2

Don Goetch
1-C-13
5-c-7b

GOVT

940'

BOLDER
LAKE

M.C. (D.H. Vaughan)
Iron Rod

Aug. 16 '54

Soil Inst.

MANITOWISH RIVER

Oak 14" N 85° W 24.3'

Cedar Post (Hennig)
Iron Pipe

Rod 8" L.P.
Birch 10" N 6° W 34'

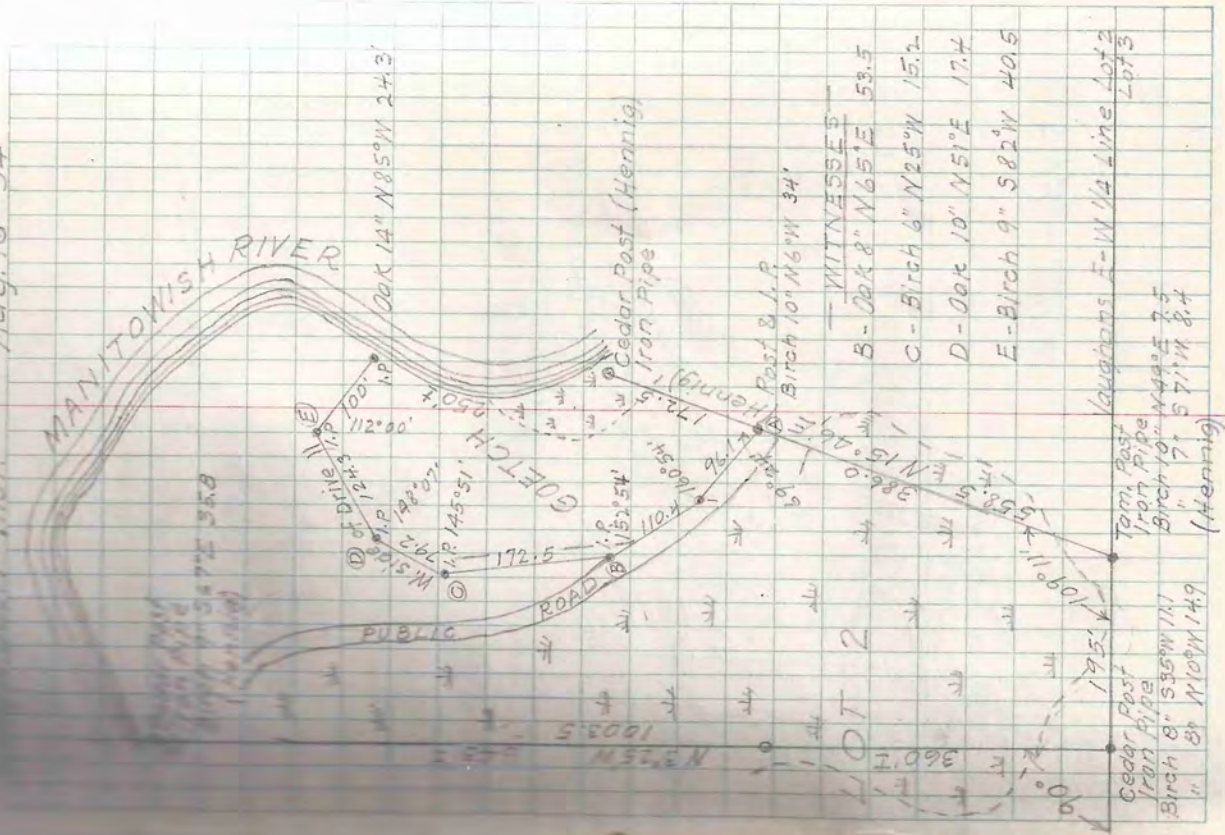
WITNESSES

- B - Oak 8" N 65° E 53.5'
- C - Birch 6" N 25° W 15.2'
- D - Oak 10" N 51° E 17.4'
- E - Birch 9" S 82° W 40.5'

Vaughan's E-W 1/4 Line Lot 2
Lot 3

Cedar Post
Iron Pipe
Birch 8" S 35° W 17.1'
" 8" N 10° W 14.9'

Tom Post
Iron Pipe
Birch 10" N 45° E 2.5'
" 7" S 71° W 8.4'

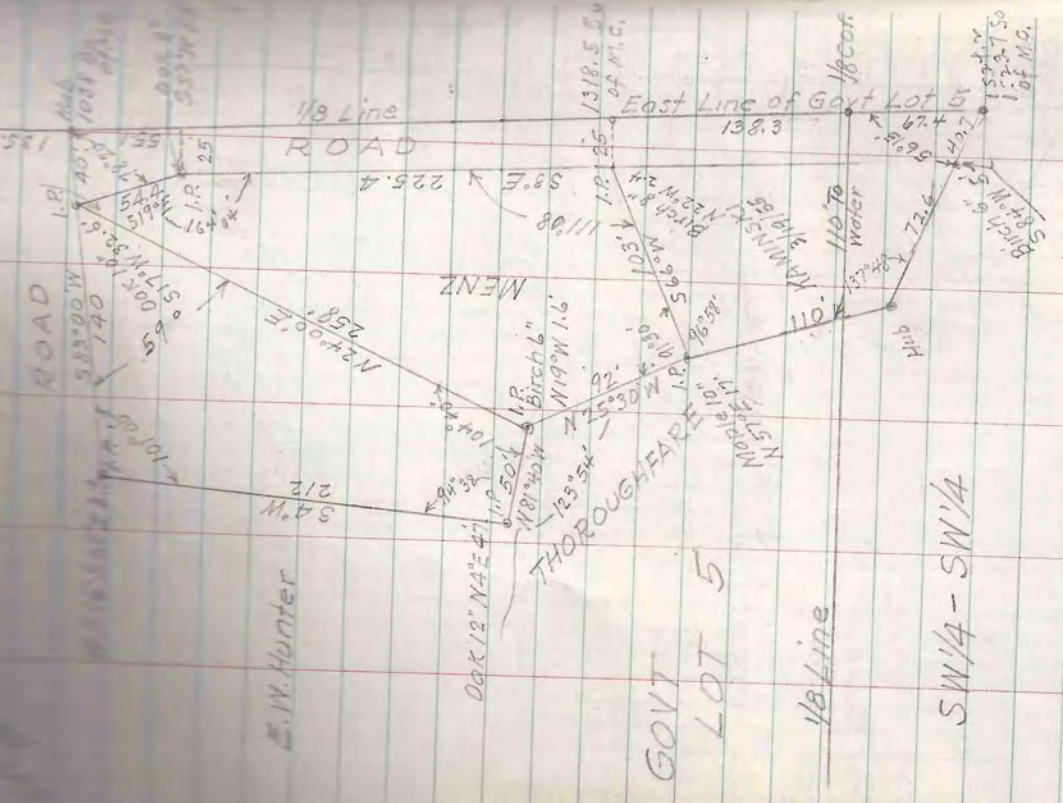


Sept 2, 54

Scott Inst
Surveyed Rod

True point is 1340.8 So of 1/8 Cor
1.R. E edge of road.
Birch Stamp 10" S 72° E 11"

SEC. 18 LOT 5

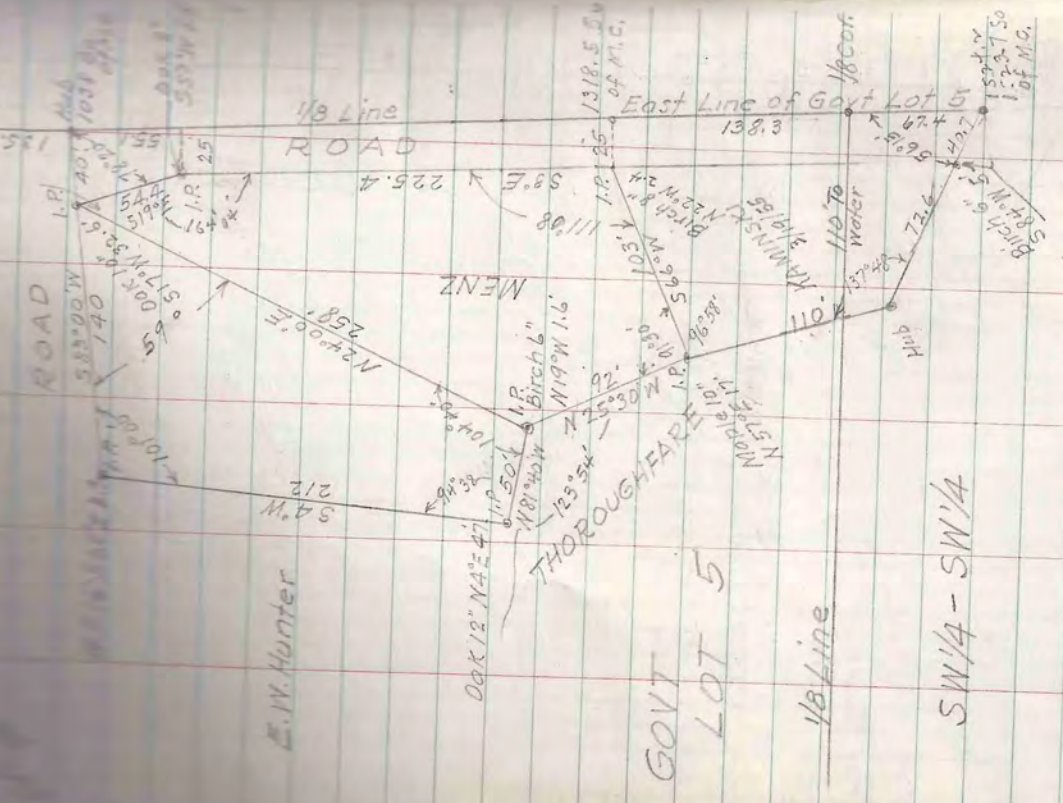


E. W. Hunter

GOVT
LOT 5

1/8 Line

SW 1/4 - SW 1/4



E. W. Hunter

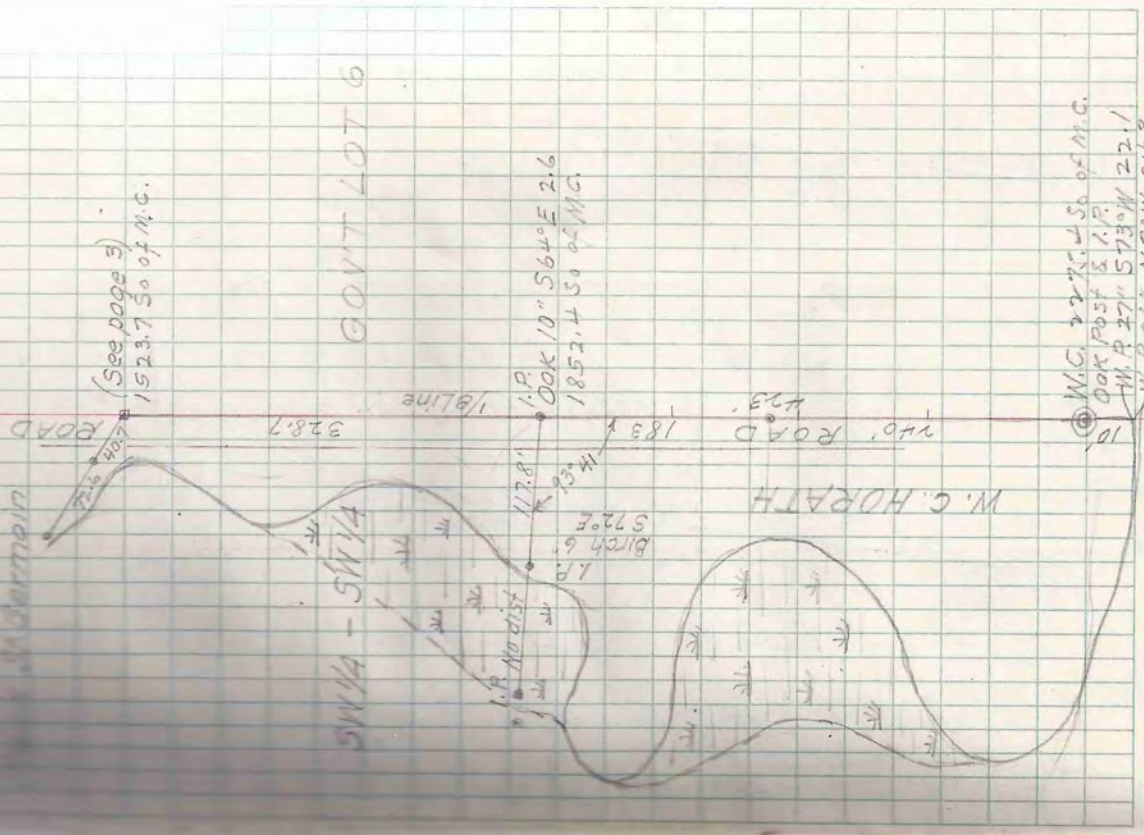
GOVT
LOT 5

1/8 Line

SW 1/4 - SW 1/4

Sept 8 '54

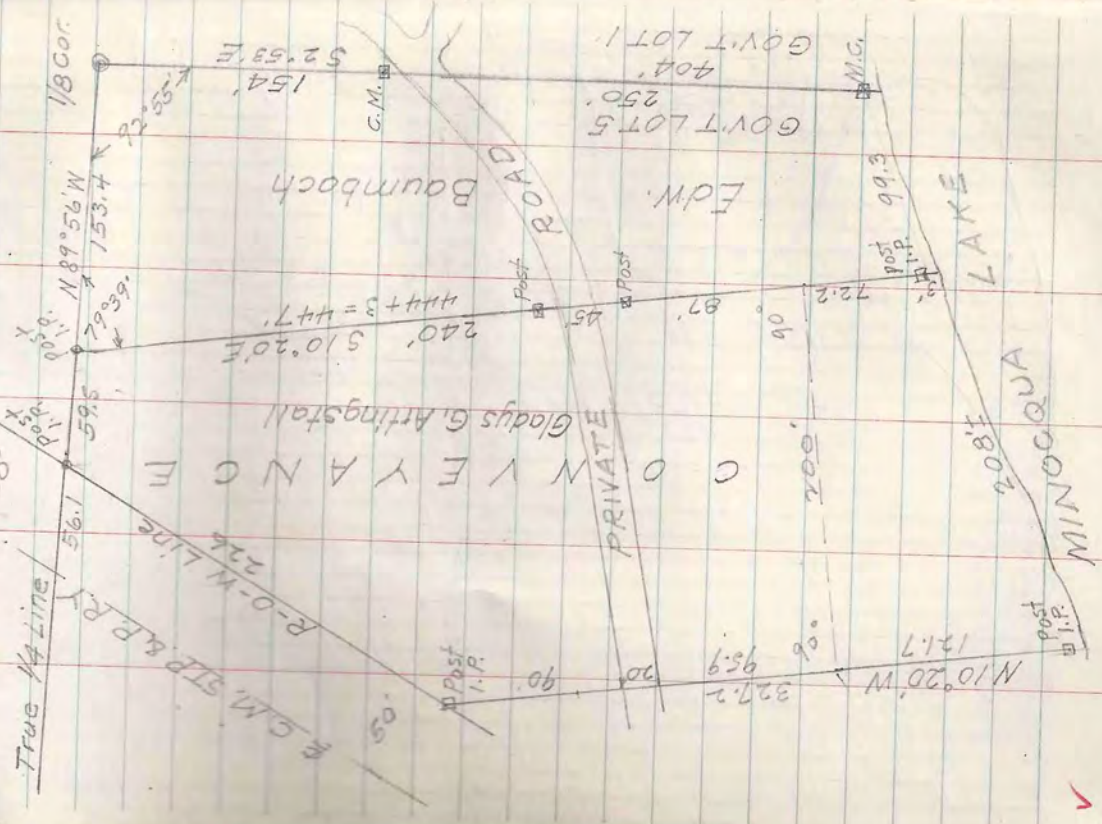
Well Inst.
M. P. Pappas
M. P. Sarmanin



LOT 7 CROSS SECTION

T39N-R6E SEC. 11 LOT 5

Edw. Baumgardner
1-C-14
1-B-7



Sept 8 '54

Lloyd Scott Inst.
Ed. Burgoyne Rod
Frank St Germain

Dak Post
1 1/2" I.P.
Birch 8" S68°E 22.6

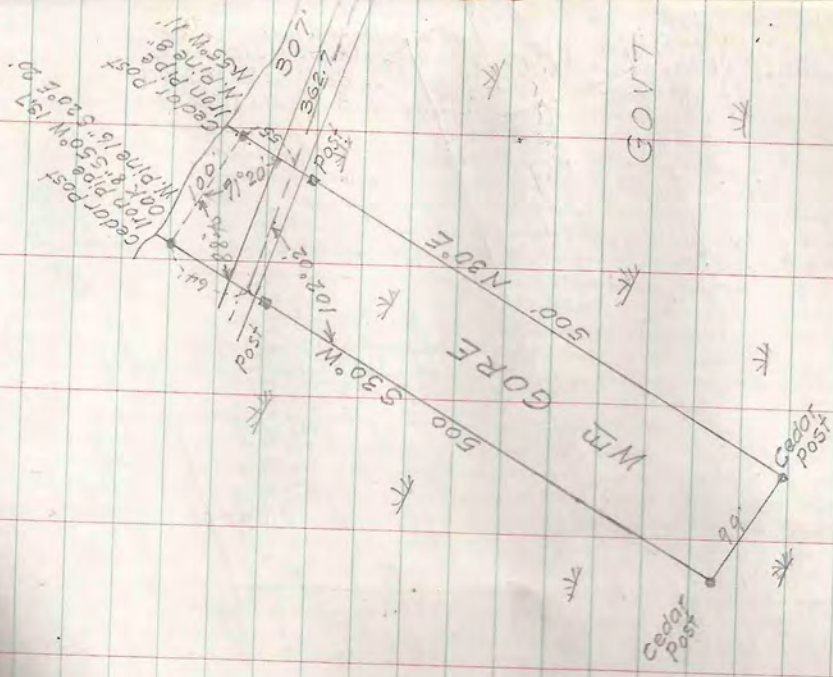
Cont. Mon.

8
Sept 15 '34

Lloyd Scott Inst
Ed. Burgoyne Rod

TOWN-RT# SEC. 19 LOT 4

Geo. Hulett Box 122 Minocqua

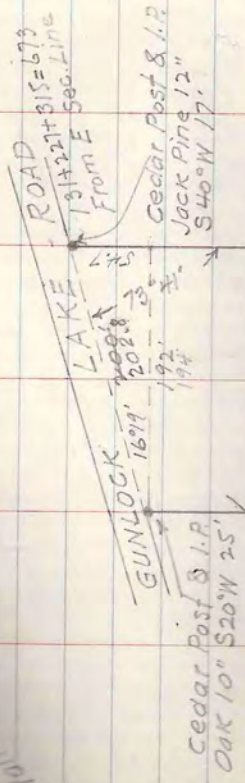


1321.7
N 88° 57' W

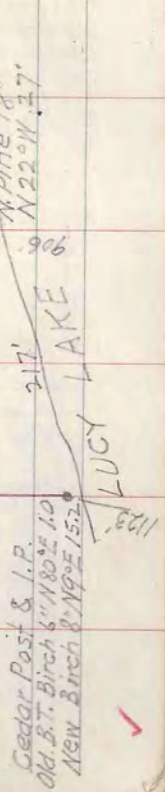
Geo. Hulett
WM Gore

T40N-R5E SEC. 34 LOT 7

Erdford
Walter Landeck



Mrs. Walter Landeck
South 1446'
North 1413'



Sept. 13 '54

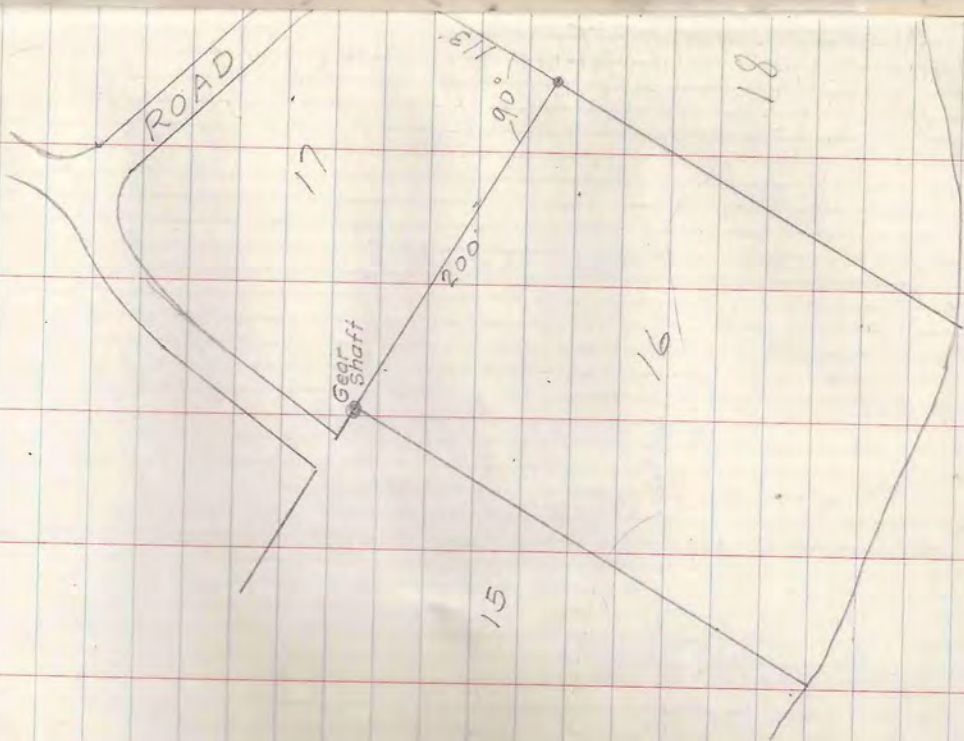
Lloyd Scott Inst
Ed Burgoyne
Frank St Germain

SEC 34 SEC 35

M.C.

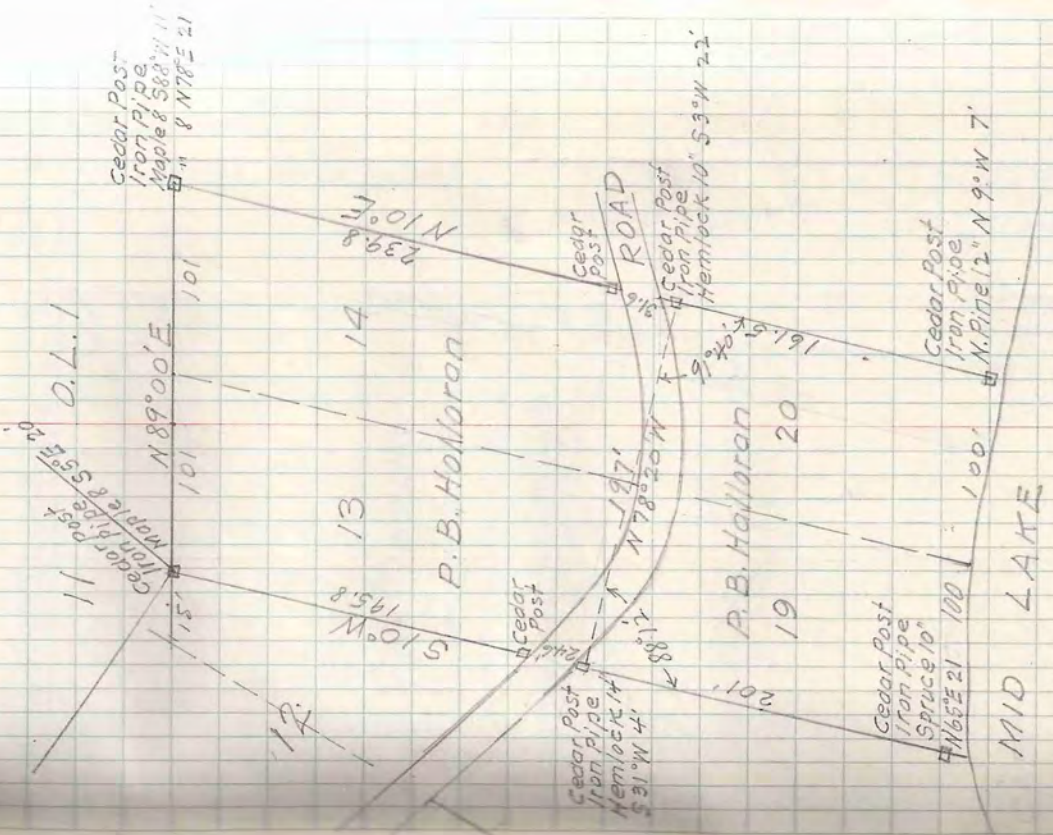
LUCY LAKE

T 59N-R7E SEC. 19 LOT 1
 "Mid Lake Forest Plat"
 P.B. Holloran Clinton Iowa



Lloyd Scott Inst.
 Ed. Burgoyne
 Frank St. Germain

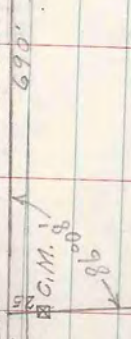
Sept. 22, 54 / 10



T40N-R10E SEC. 35 Lot 3

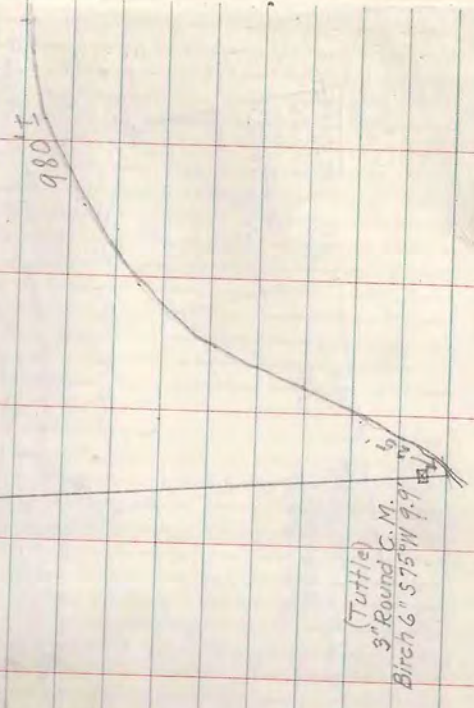
Michael Zilk
E.C. Hoover Rpt
G.M. 1/4
150'

TOWN ROAD



S 2° 10' E (Tuttle) 1100'

Michael Zilk
Description to
T.C. Hoover Assoc.
Blueprint



Sept 23 '54

Lloyd Scott Inst
Ed Burgoyne Rod
Frank St Germain

N 88° 18' W (Tuttle) 1440'
G.M. 1/4
27.7'

GOVT LOT 4
53° 25' W (Tuttle) 1067'
515.7'

GOVT LOT 3
CONVEYANCE

S 11° 58' E 571'
544'

Cedar Post
Iron Pipe
Oak 1/8"
N 52° E 61'

152.0'
557.3' N
112'

GATEFISH
LAKE

293.7'
61° 55.4' N
15'

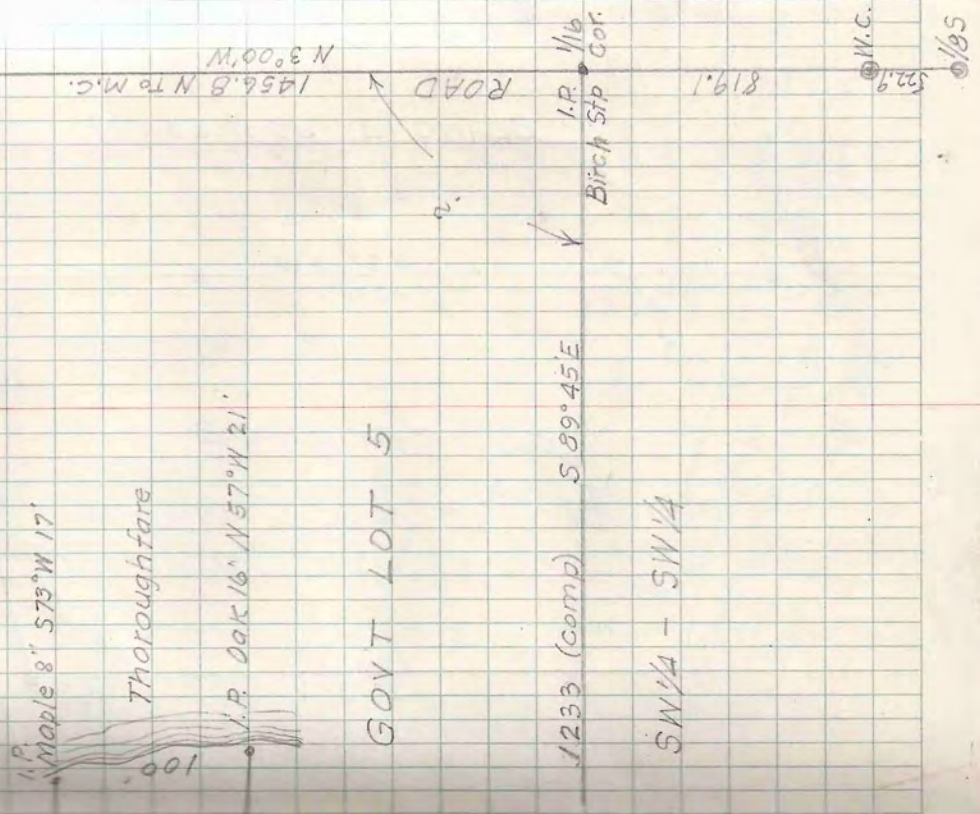
(Tuttle)
3" Round C.M.
Birch 6" 575' 11 9.9'

GOVT LOT 4
3" Round
90° W
T.C. Hoover Rpt
Square

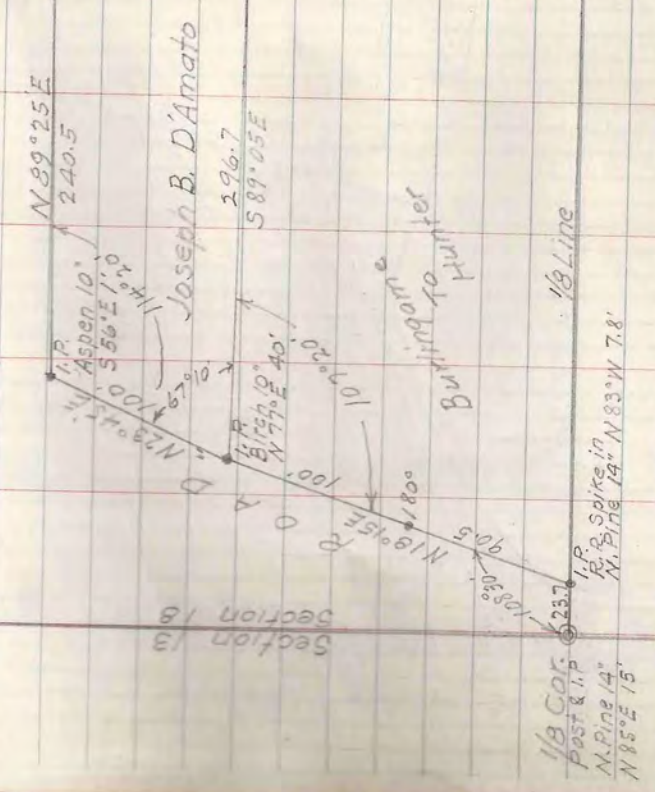
T 99 N - R 7 E SEC. 18 LOT 5

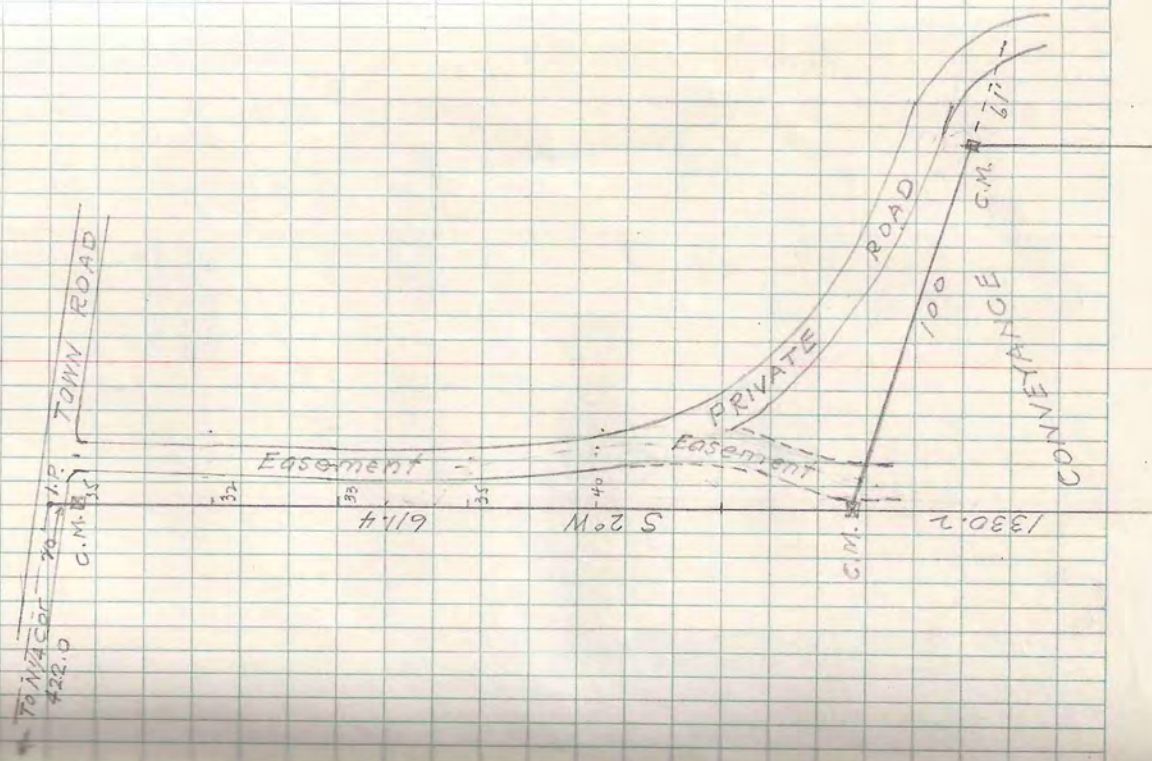
Sept 27, '54

Lloyd Scott Inst.
Ed. Burgeyne Rod

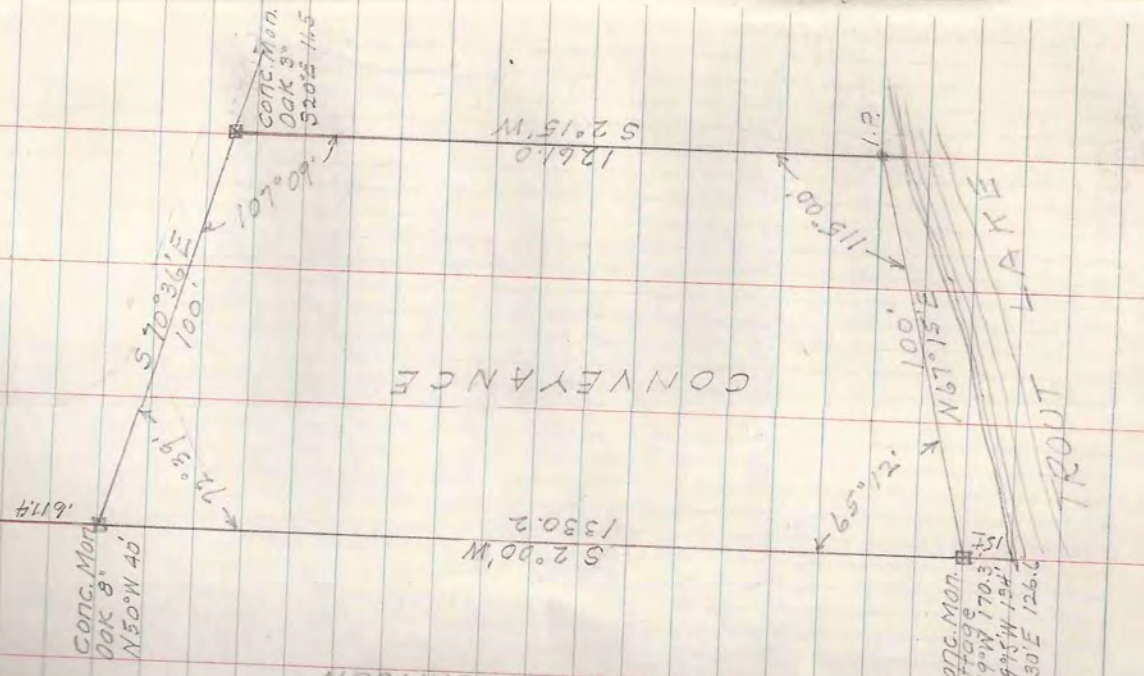


Burlington





T42N-R7E SEC. 31 LOT 2
 P.O. Box 91 Boulder Jct.



P.C. Johnson
 3-4-25

CONC. Mon. Oak 8' N50°W 45'
 CONC. Mon. Oak 3' S20°E 45'
 S.E. Cor Cottage 579°W 170.3'
 Birch 10" N49°SW 154'
 Elm 10" N22°SE 126.0'

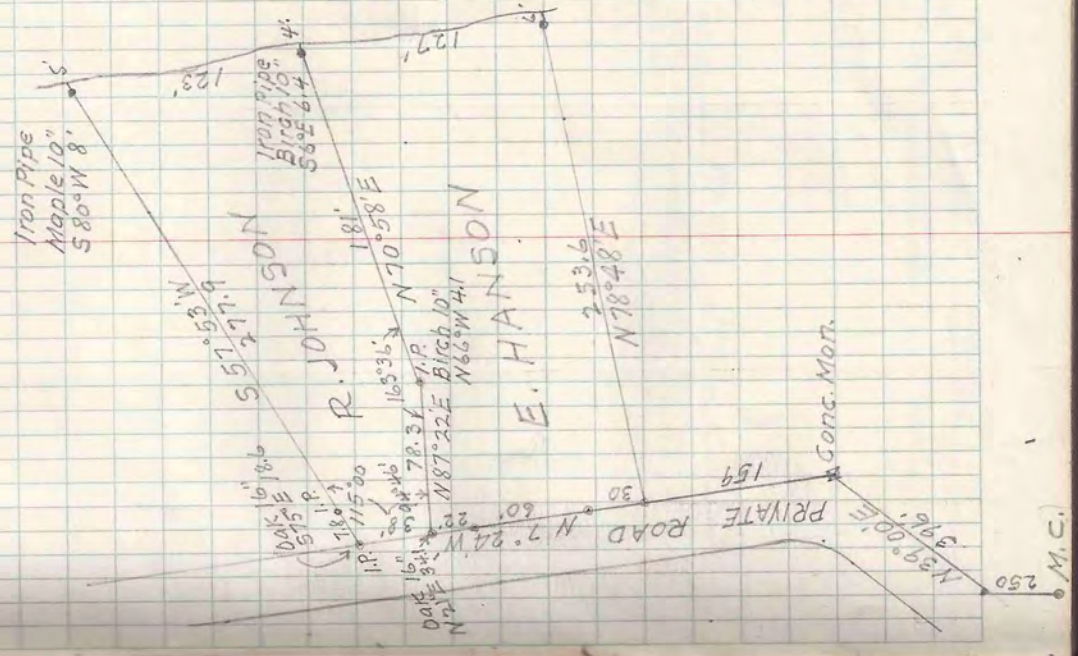
T39N-R6E-SEC.11 LOT 1

Erin Hanson
1-8-5

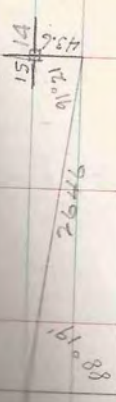
Lloyd Scott Inst.
F.F. Korwaik's Rod.

14
Oct 4 54

MINOCQUA LAKE



TOWN RGE SEC. 23 LOT 6



TOWN ROAD

GOVT LOT 7

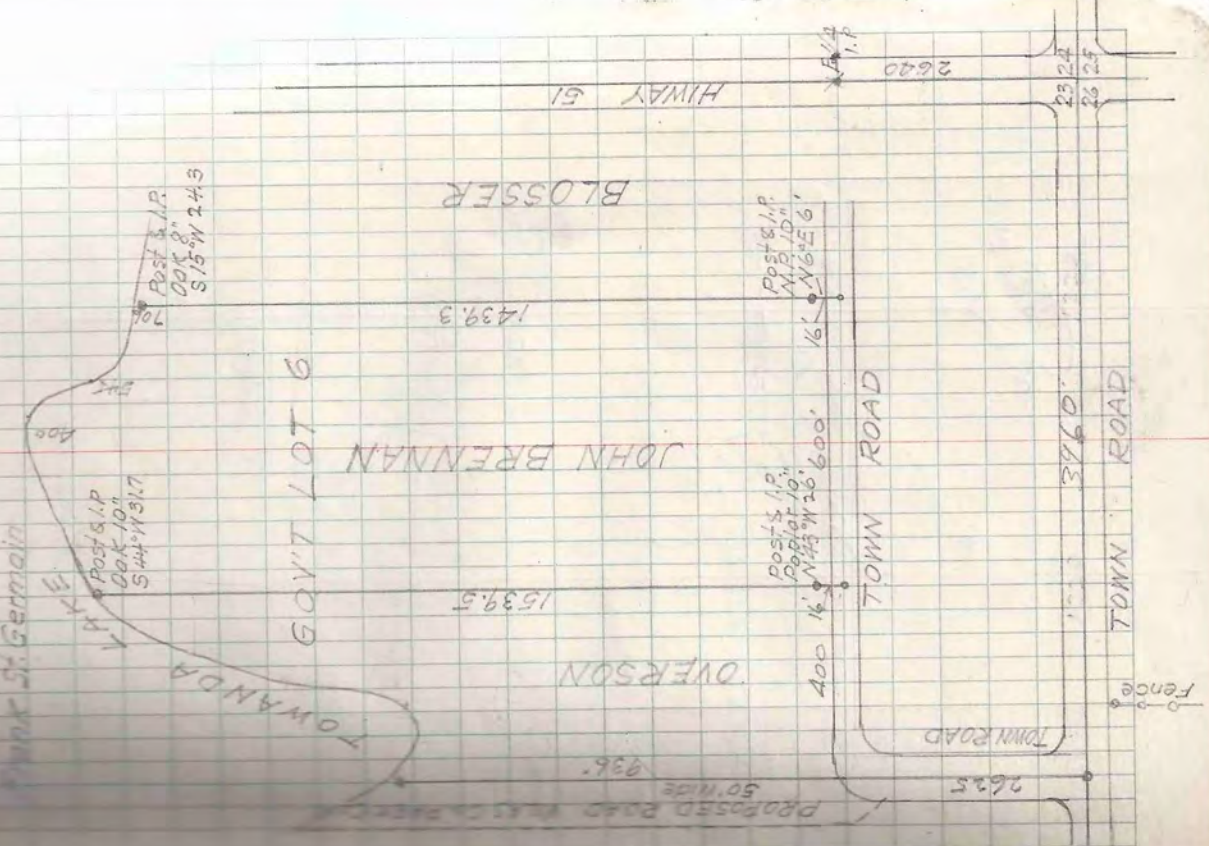
MARSH

Old Post
rotted & down
Sec. Cor. ?

Sept 1952

Sept 1952

Grand Scott Inst
Ed. Burdette
Frank St. Germain



HIWAY 51

2620

2324
2625

Post & I.P.
161.7
S15°W 243

Post & I.P.
161.7
S44°W 1317

Post & I.P.
161.7
N61°E 61

Post & I.P.
161.7
N45°W 2660

TOWN ROAD

TOWN ROAD

Fence

TOWN ROAD

2625

1320

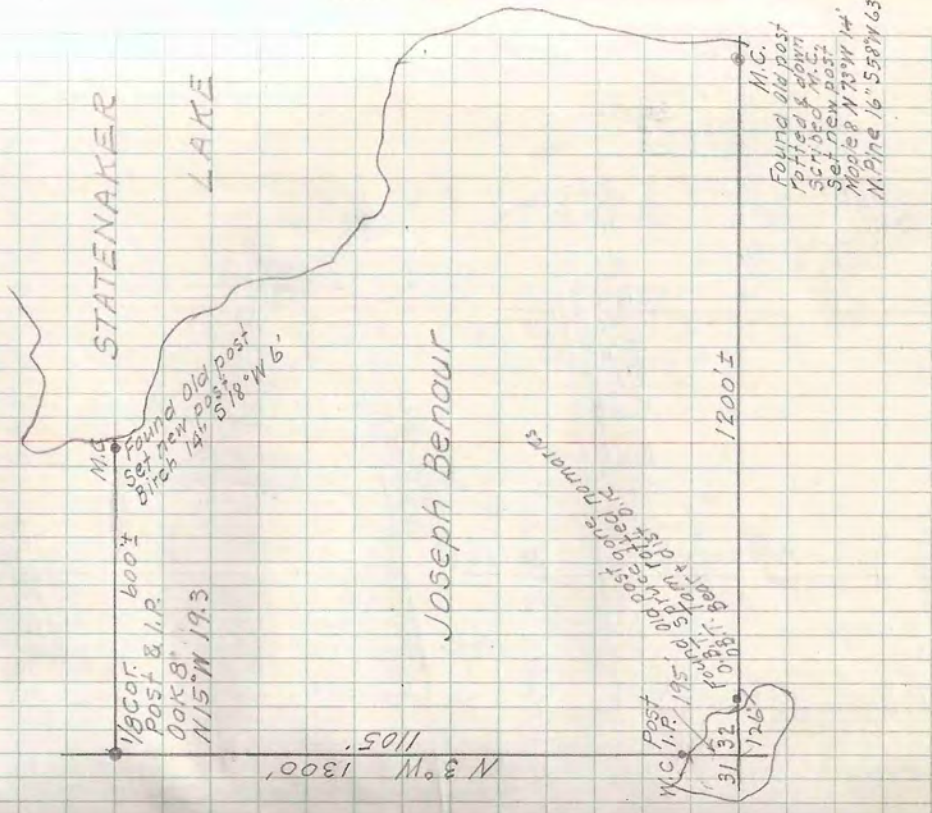
5299

60.06

2474

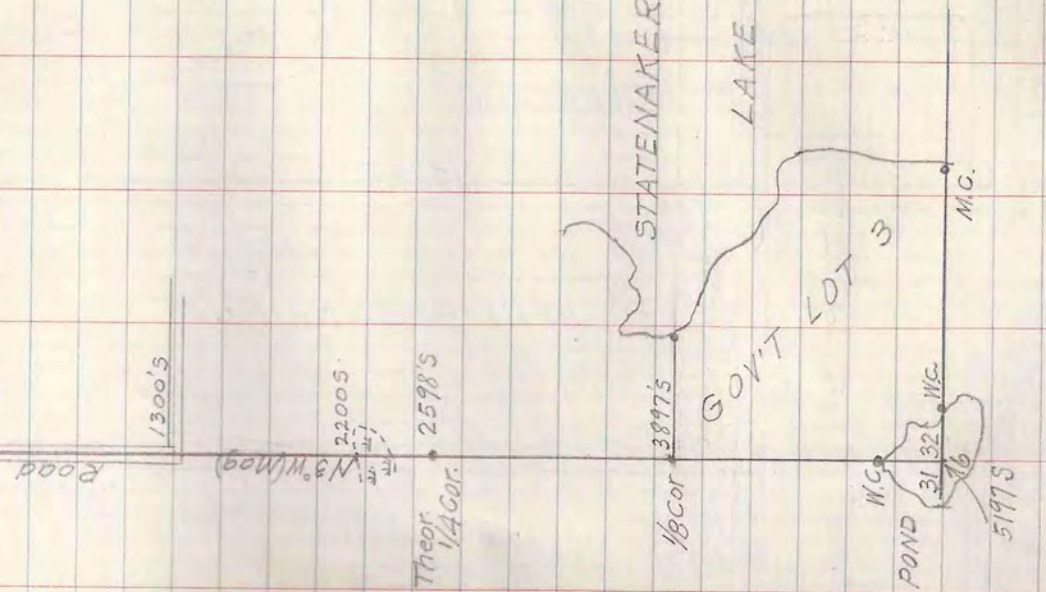
Lloyd Scott Inst Sept. 1954 16

Ed. Burgoyne
Frank St Germain



TAIN-R6E SEC. 32 LOT 3

30/29 C.C.C. Poster
31/32 3 B.T's
Spruce, Maple, Nor. Pine



Joseph Bendall
3008 N 1st Minn St

T40N-R6E SEC. 36 LOT 5

D. Regan

ARROWHEAD LAKE

C.M. Birch 8" S 83° E 13'

C.M. W. Pine 16" S 58° E 8.9'

Old Fence Line North (Mag) 300'

LEE HANSECK

D. REGAN

288.
353.5

Cedar Post
Iron pipe
Oak 14" N 30° W 26.4'

90° 90° 90°

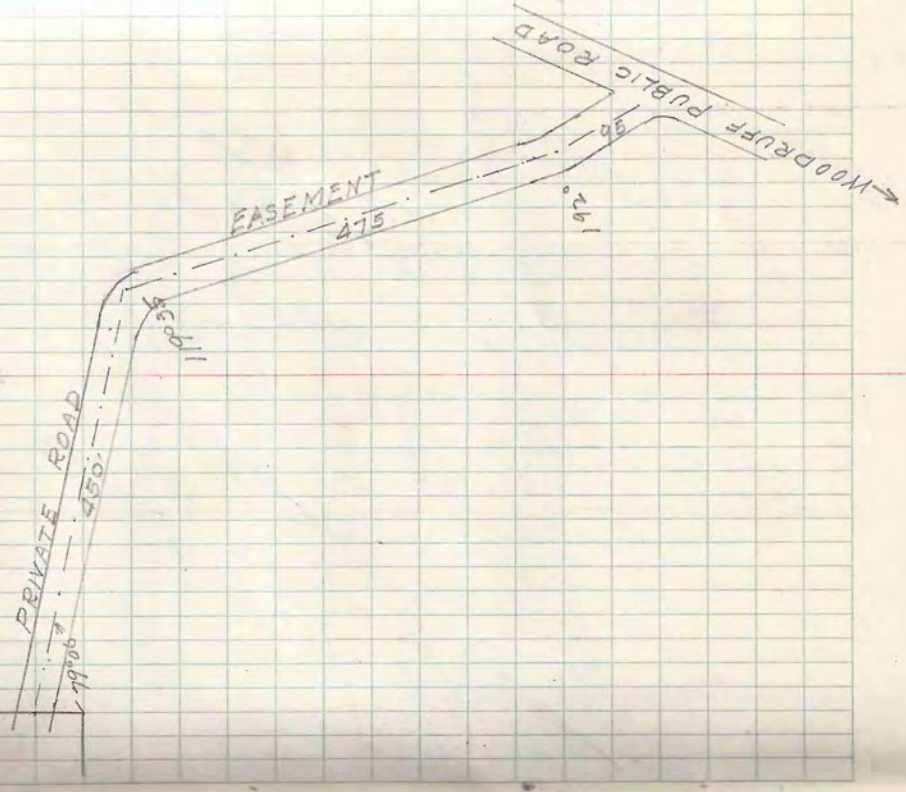
Cedar Post
Iron pipe
W. Pine 18" N 25° W 22'

53.5

ROAD

Oct 19, 1954 / 8

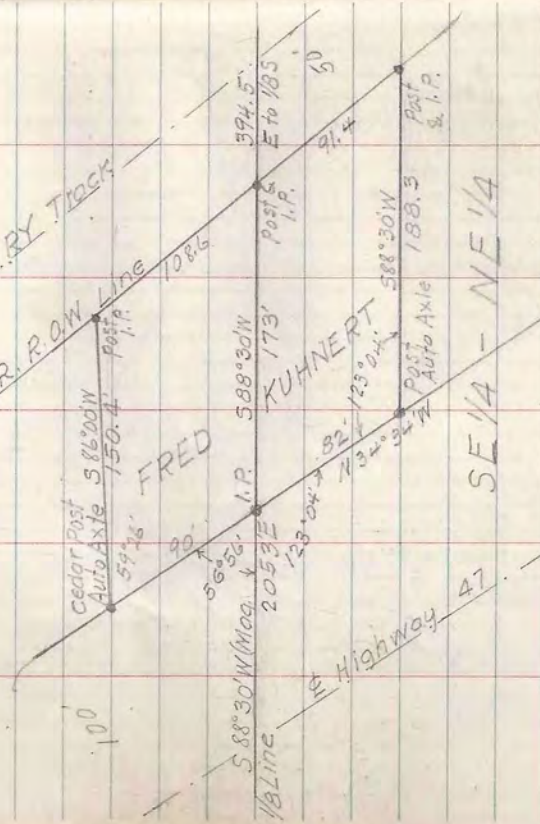
L. W. Scott Inst.
Ed. Burgoyne Rod



T 39N-R6E SEC. 12
SE 1/4-NE 1/4 & NE 1/4-NE 1/4

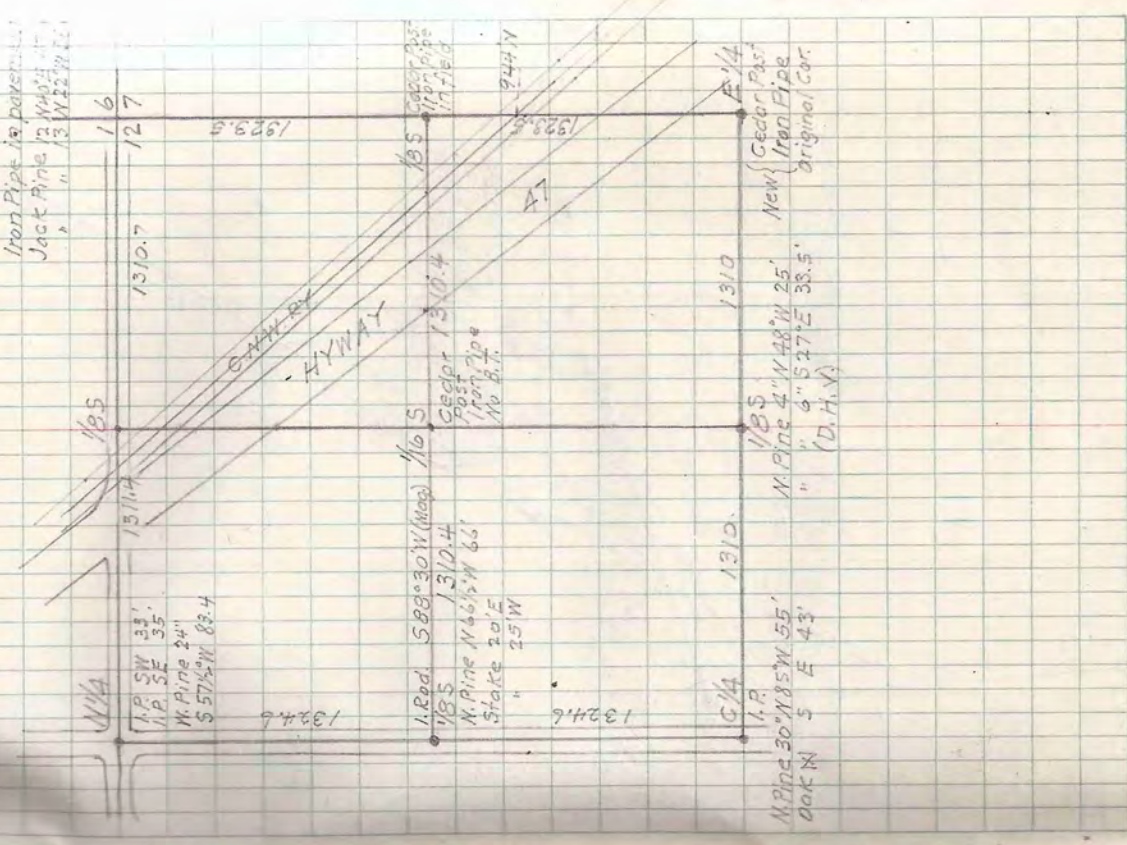
NE 1/4 - NE 1/4

5' C & W. RY. TRACK
R.R. R.O.W. Line



Gus Finer
Fred Kuhnert

W. Scott Inst.
Ed. Burgoyne
Oct. 21, 1954



Iron Pipe in pavement
Jacked Pine 12 N 40° E 41'
" 13 W 22° N 25'

1310.7
1310.4
1310.5

N.P. SW 33'
N.P. SE 35'
N.P. Pine 24'
S 57 1/2° W 83.4

1324.6

I. Red. 588° 30' W (Mag.) 1310.4
N. Pine N 46 1/2° W 66'
Stake 20' E 25' W

1324.6

M. Pine 30° N 85° W 55'
Oak N 5° E 43'

M. Pine 4° N 88° W 25'
" 6° S 77° E 38.5'
(D.H.V.)

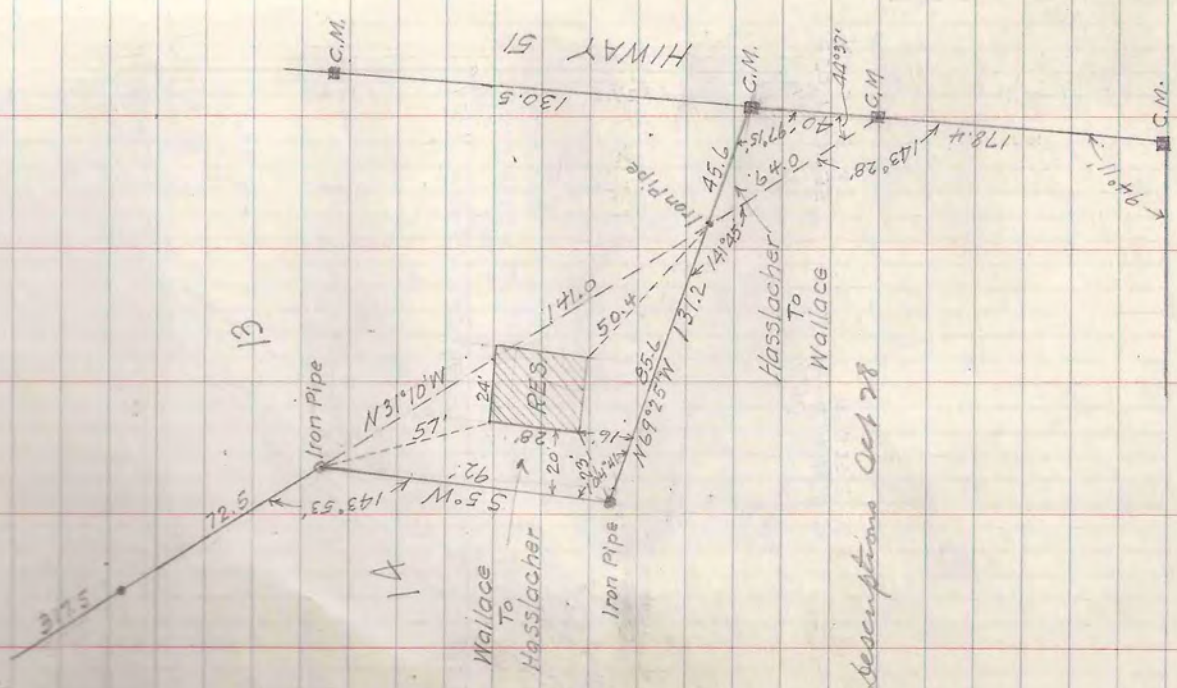
New Cedar Post Iron Pipe Original Cor. (D.H.V.)

Byron E. Wallace
Ed. Hasslacher

DENHARDT PLAT

L.W. Scott Inst.
Ed. Burgeyne Rod

Oct 23, 1954



2 descriptions Oct 28

13

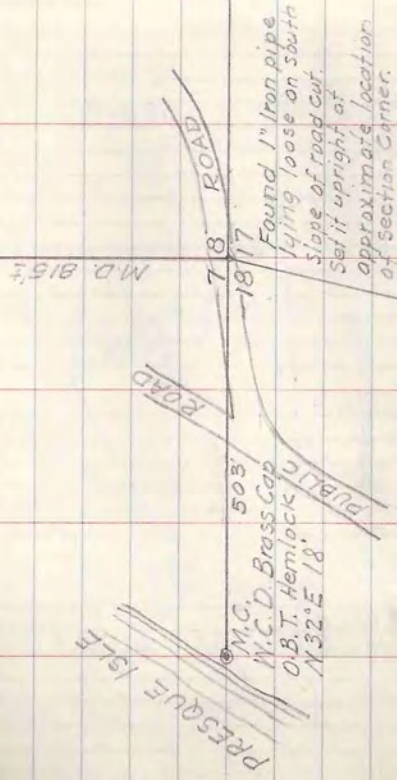
14

Art. Bernaman

T43N-R6E SEC. 17 LOT 2

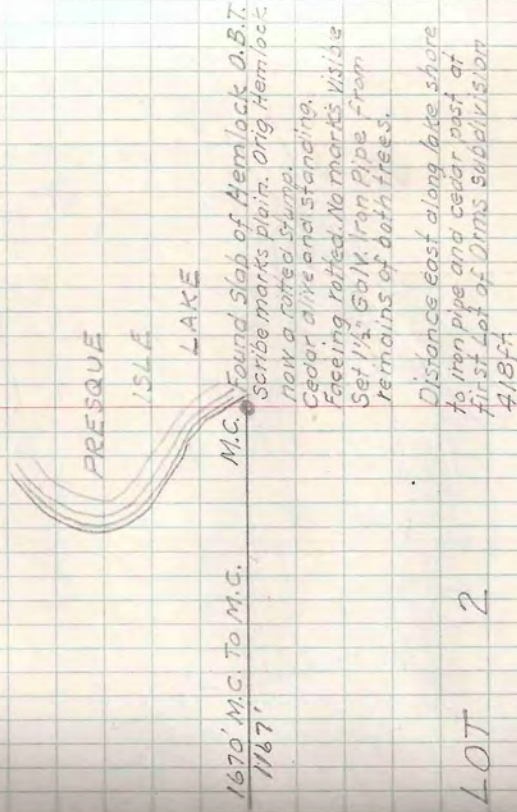
Compass & chain survey

PRESQUE ISLE
M.C. D. Brass Cap
Orig. B.Ts
Not identified



Oct 27 '54

L.W. Scott Inst.
Ed. Burgoyne Rod



Oct. 29, '54

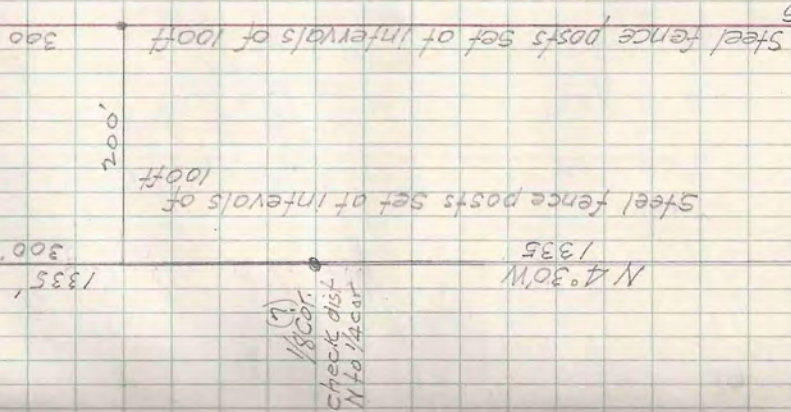
L. W. Scott Inst.

Honolulu Rod

T40N-R6E SEC 25 W1/4-SE1/4

G 1/4
R.R. Strike
in parent
Post
100
1. R. 200'

HY. R.O.W. Line

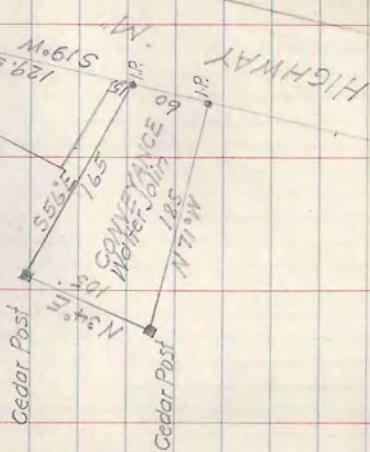


T42N-R7E SEC. 20. LOT 1

16 cor
C.M.

1/8 line
273.0

HIGHWAYS M & K
501.4



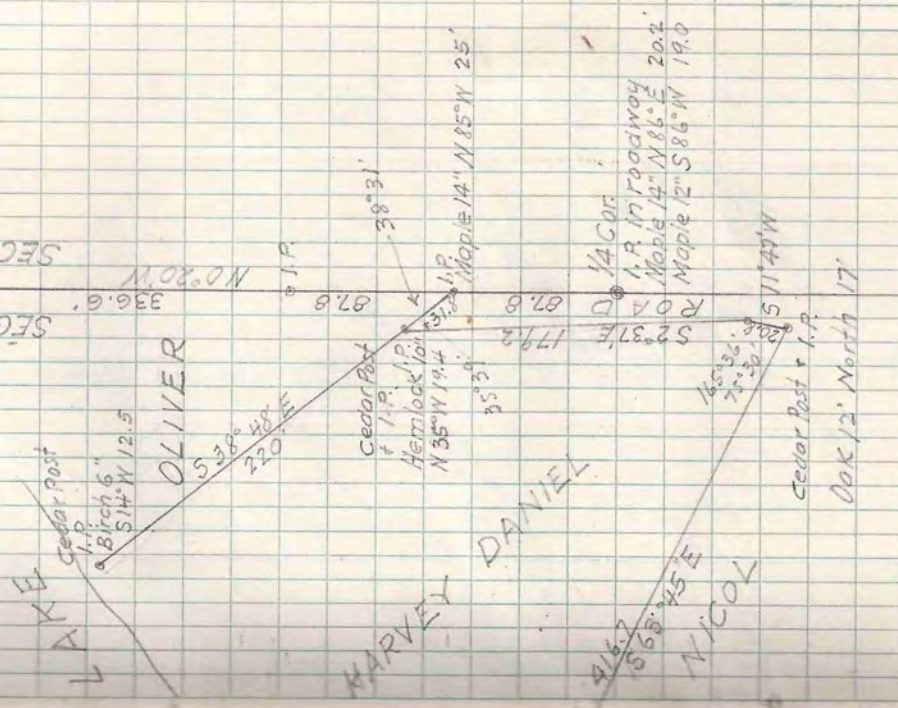
Bill Jorgensen
Herbert Brooks

Nov. 17, 54

L.W. Scott Inst

Ed. Burgoyne Rod
Behn " M.S.

SEC. 19
SEC. 20



OLIVER

HARVEY DANIEL

NICOL

Cedar Post & I.P.
Oak 12' North 17'

T 39 N - R 5 E SEC. 19 LOT 6

Geo. K. Nicol
426 Main St. Picatonia Ill.

(See Book 11 Page 61)

SQUIRE

Cedar Post
I.P.
Birch 10"
N 27° E 9.6'

GEO K

1 Cheepins to Always
Bill to Nicol

Geo. Nicol
Harvey Daniel
I.A.K.

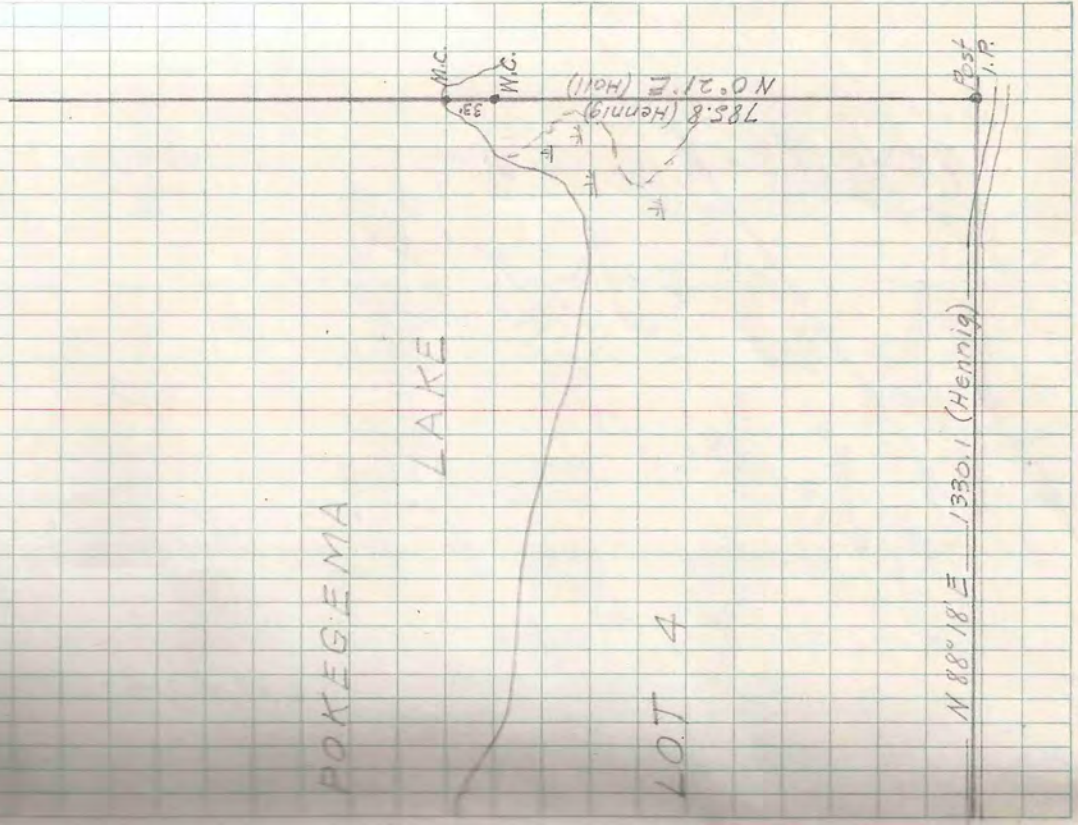
Nov 16 '54

Wm Scott Inst
Ed Burgoynes
Al Behn

POKEGEMA LAKE

LOT 4

N 88° 18' E 1330.1 (Hennig)



TAIN-RSE SEC. 29 LOT 4

FRANK GROSSNER
2539-45th St

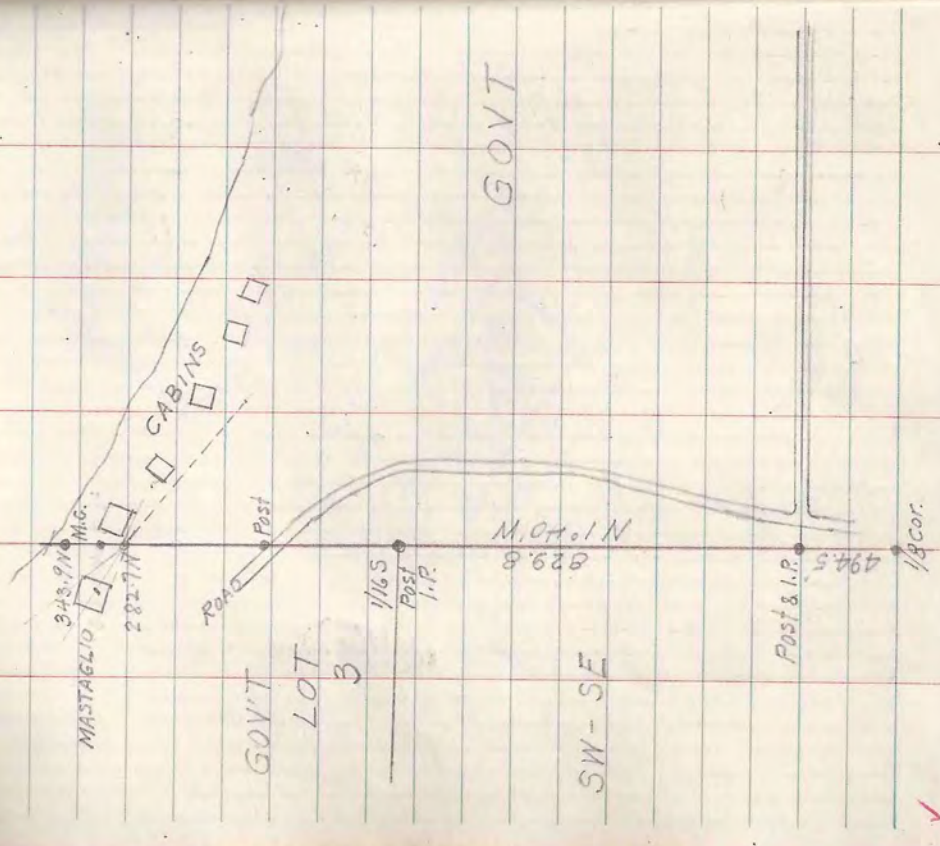
Highland Ind. Tel. 1444 RX
John Ames Atty

GOVT

GOVT

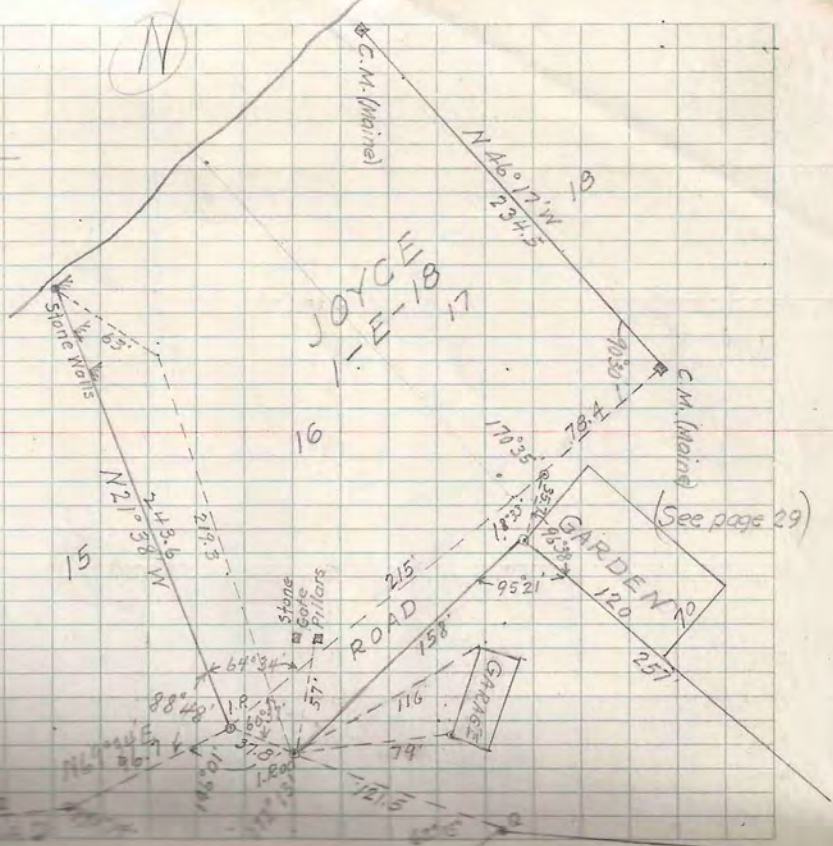
LOT 3

SW-SE



MINOCQUA COUNTRY CLUB

HOWARD'S POINT

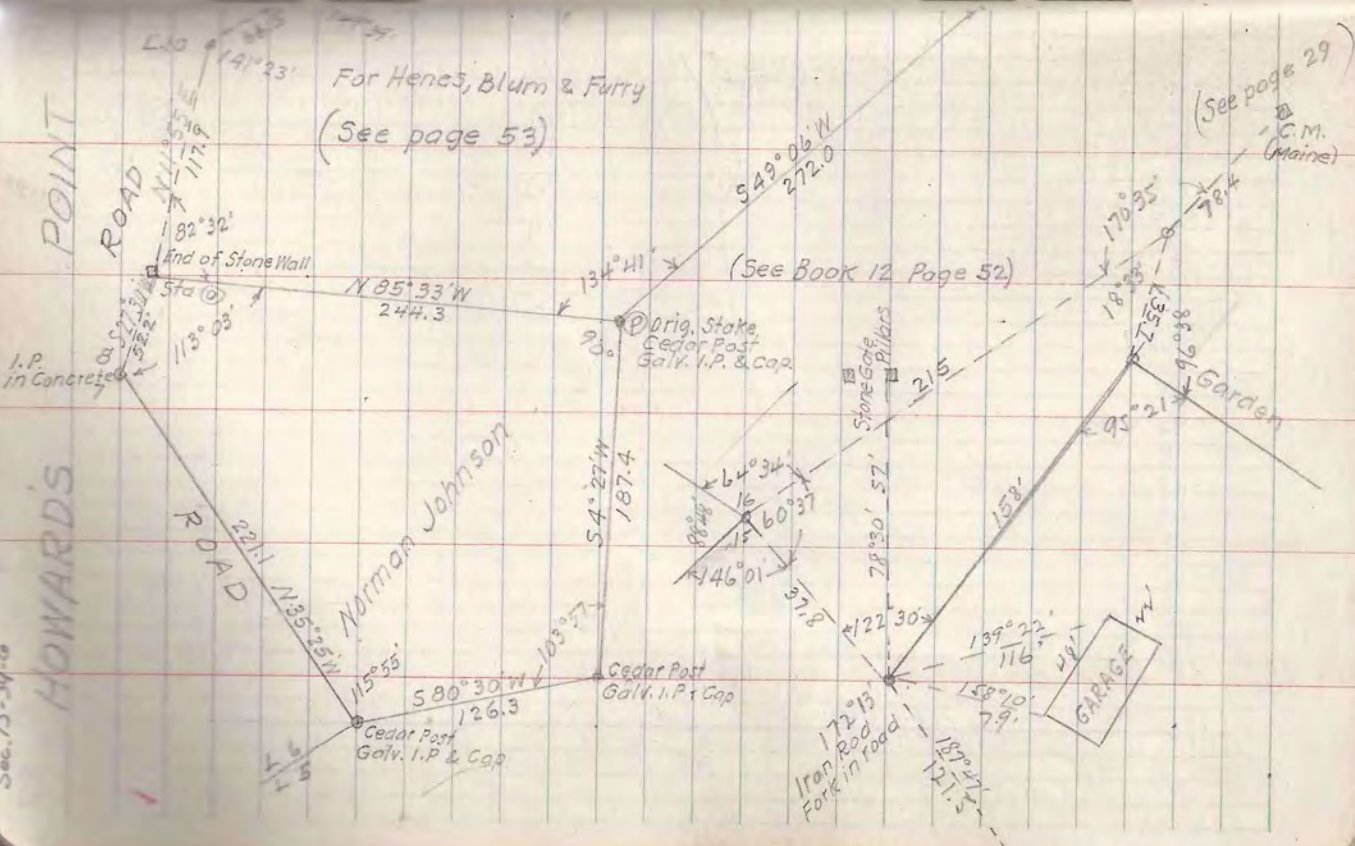


1A

(See page 29)

HOWARD'S POINT

Sec. 13-19.6



For Hens, Blum & Furry
(See page 53)

(See Book 12 Page 52)

(See page 29)
C.M. (Maine)

I.P. in Concrete

End of Stone Wall

Orig. Stake
Cedar Post
Galv. I.P. & Cap

Stone Gate
Pillars

Garden

GARAGE

Norman Johnson

Cedar Post
Galv. I.P. & Cap

Iron Rod
Fork in Road

Dec. 1, 1954

L. W. Scott Inst.

M. Burgoyne

M. Behn

for Dr. A. E. Russell

4600 N. Bartlett Ave.

Shorewood Ill. Wis.

PLAT DE GLEN FELL

MERCER LAKE

164' 60' 13' 143'

Vol 154

A.C.D. A.L. Fell to O.C. Hennig Pg. 387

139.8

552.6

414.8

192.7

118.7

18.3

1.9

203.8

40

100

760

100

100

89.5

252.7

337.3

1.9

515.7

118

R.R. Spike

In W. Pine 14'

Post

Post

Post

Post

Post

Post

Post

Post

Post

Post

Post

Post

Post

Post

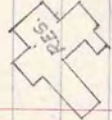
Post

Post

Post

Post

Post



O.C. Hennig to A. E. Russell

LOT 9558 LOT 8

GOVT LOT 2

Spruce 12' N 15° E 13'

W. Pine 16' S 88° E 30'

G.M.

G.M.

80'

430'

1/4 Cor.

G.M.

W. Pine 17'

S 80° E 3'

G.M.

80'

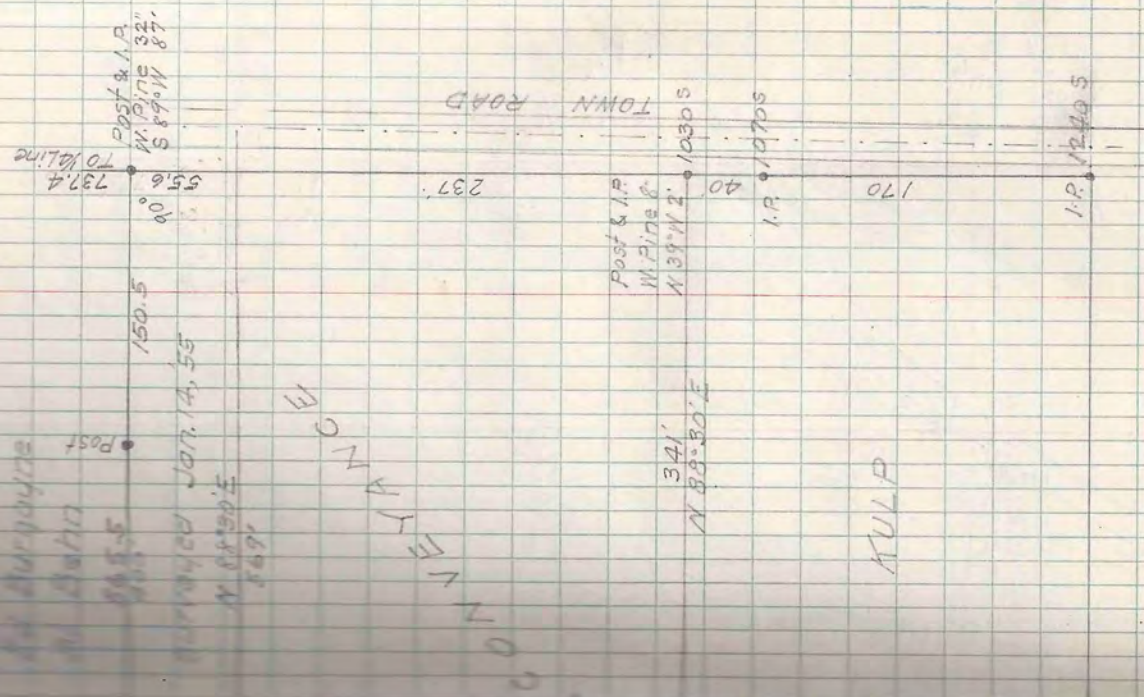
430'

1/4 Cor.

G.M.

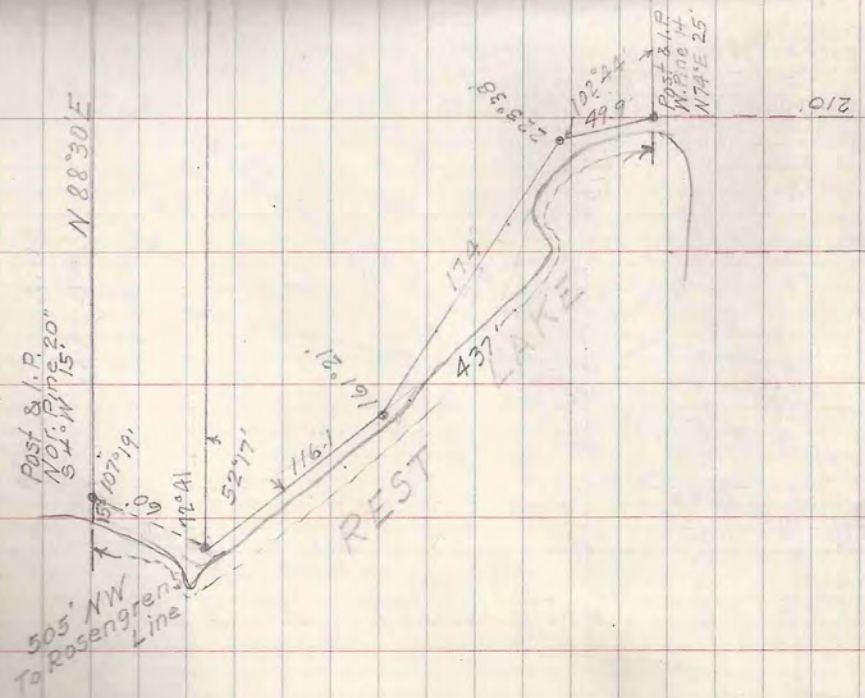
Dec. 6, 1954

W. Scott Inst



T42N-R5E SEC 10 LOT 2

Mrs E.R. Perkins



T43N-R6E SEC.17 LOT 2

M.C.
W.C.D. Brass Cap.

(See Book 13-Pg 22)

540.7 7.9 18.17 N 88° 39' E

M.C.
W.C.D.
Brass Cap

100' Cedar Post & I.P.
Maple 10" N49°W 60'
Birch 10" N24°E 54'
Maple 8" S41°W 59'
ASH 10" N24°E 57'

5° 36' W (From Orms Plat)
512.00 W (Carlson)
871.7

GOVT

Post & I.P.
Maple 16"
5510° W 31'

1268.7
351.7
71° 26'
245.2
55° 28' E 102.53'
546.7
178.7
193.30'

1/8 COR
C.M.
(Carlson)

TATAYITA LAKE

C.M.
(Carlson)

588.47 E

Dec. 6-10 '54

L.N. Scott
T.M. Burgoyne
M. Behn

Did not find M.C.

Y. Birch 8" (New)
558' W 17'

Remains of both B.T.s
Original M.C. Set 1/4" Iron pipe
N 85° 00' E 2.886

4416' Total Distance

PESQUE LAKE

LAKE

M.C. Iron Pipe
Post by W.S. Bromley 1947
Marked Sec 17 Lot 2

50° 30' N (Bromley)
178.0° 1970' 128.3

LOT A

ORMS SOUTH SHORE LOT.

M. Iron Pipe

53° 02' W 380'
14 1/2" M.I.C. 1 N
383'

Post & I.P.
ASH 10"
W 59° W 6.7

1020 ±

582.1

352.8

587° 05' E K 584° 51' E

323.1

113.2

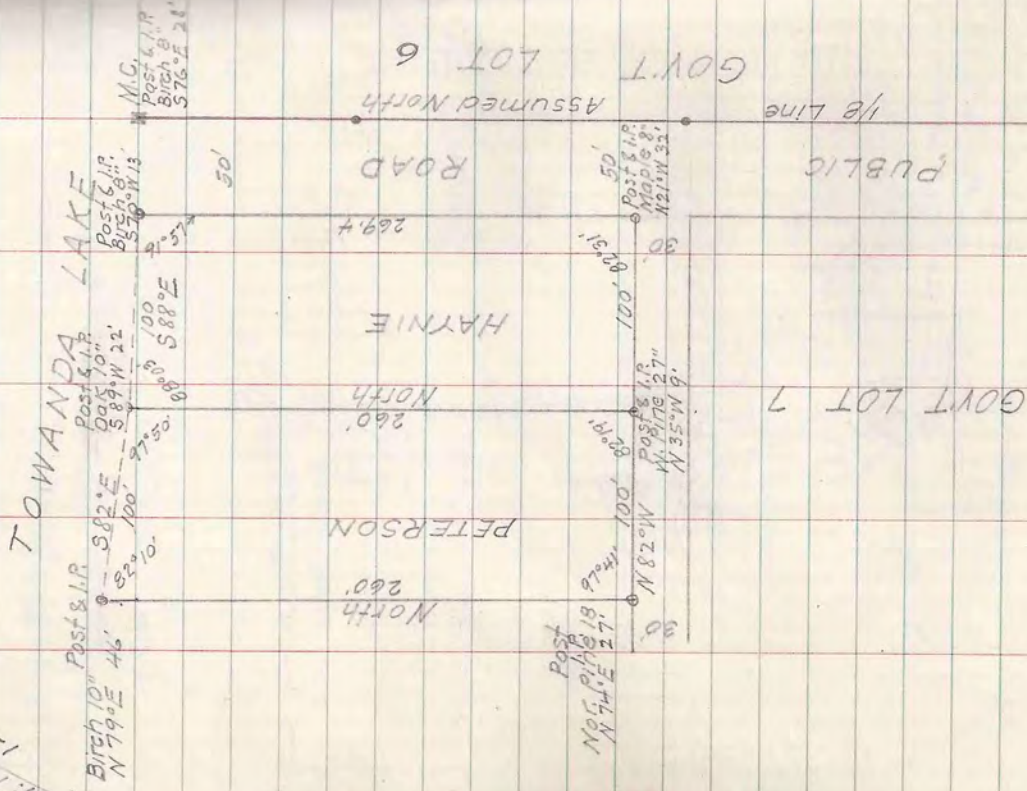
169'

528' ± 1/2 N

Arthur Bernman

Dr. Thiedeman
1-A-40

T40N-R6E SEC. 23 LOT 7



W. Scott. Inst.
W. Burgeyne Rod
M. John

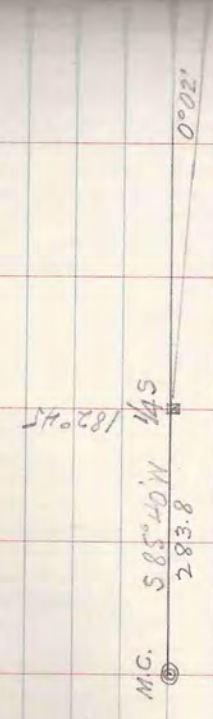
Dec. '54

50

111

T42N-R5 SEC. 13 LOT 2

J.R. Dickerson



1/4 cor. - M.C. - A	113°00'	S 18°40'W	66.0
A - B	150°48'	S 10°32'E	76.0
B - C	203°51'	S 13°19'W	91.8
C - D	157°13'	S 9°28'E	110.4
D - E	167°56'	S 21°30'E	137.0
E - F	166°14'	S 35°16'E	124.4
F - G	172°20'	S 42°56'E	84.6
G - H	162°03'	S 60°53'E	81.6
H - I	167°54'	S 72°59'E	83.2
I - J	172°51'	S 80°08'E	122.3
J - K	147°41'	N 67°33'E	95.7
K - L	137°58'	N 25°31'E	69.6
L - M	229°16'	N 74°47'E	161.3
M - N	166°47'	N 61°34'E	67.4
N - O	170°32'	N 52°06'E	100
O - P	157°11'	N 29°17'E	86.7
P - Q	225°50'	N 75°07'E	218.5

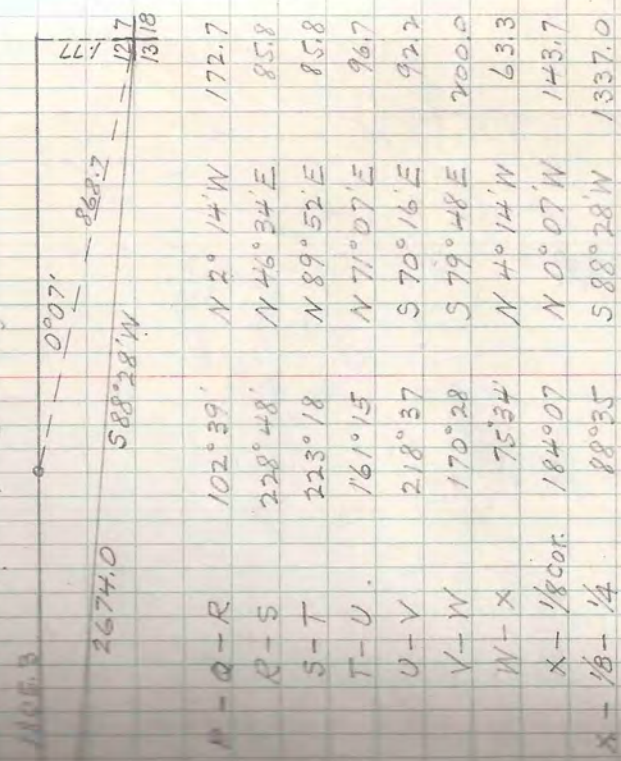
Pine tree

W. Scott Inst
 M. Surpoyne Rod
 M. Behn

Jan. '55

39

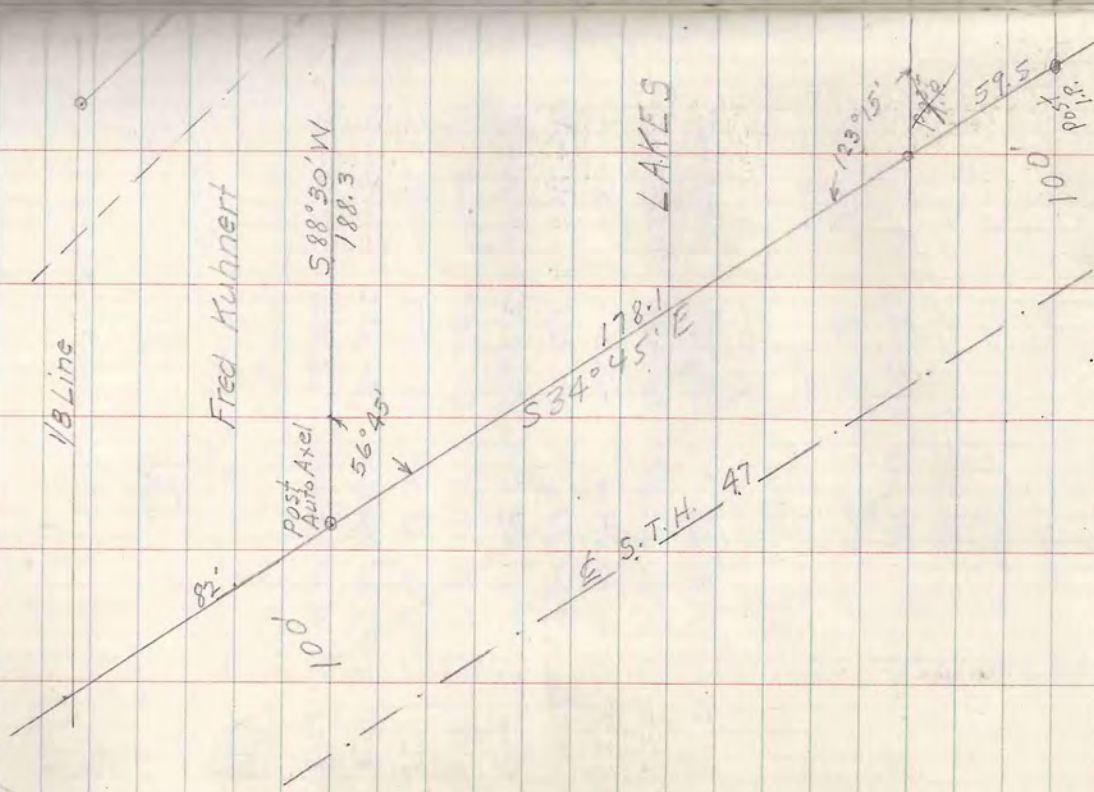
(see page 47)



M - Q - R	102°39'	N 2°14'W	172.7
R - S	228°48'	N 48°34'E	85.8
S - T	223°18'	N 89°52'E	85.8
T - U	161°15'	N 71°07'E	96.7
U - V	218°37'	S 70°16'E	92.2
V - W	170°28'	S 79°48'E	200.0
W - X	75°34'	N 4°14'W	63.3
X - 1/8 cor.	184°07'	N 0°07'W	143.7
X - 1/8 - 1/4	88°35'	S 88°28'W	1337.0

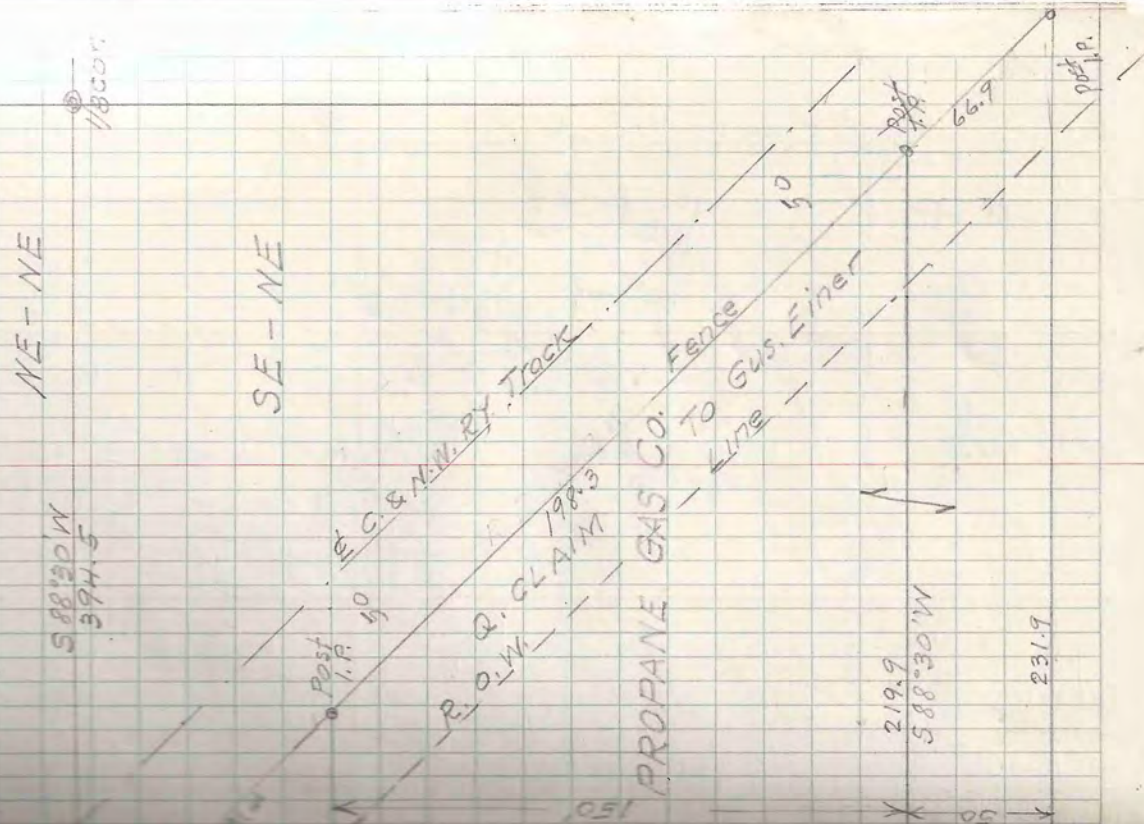
T39N-R6E SEC. 12
SE 1/4 - NE 1/4

Gus Einer



L.W. Scott Inst
Ed. Burgoyne Rod
M. Behn

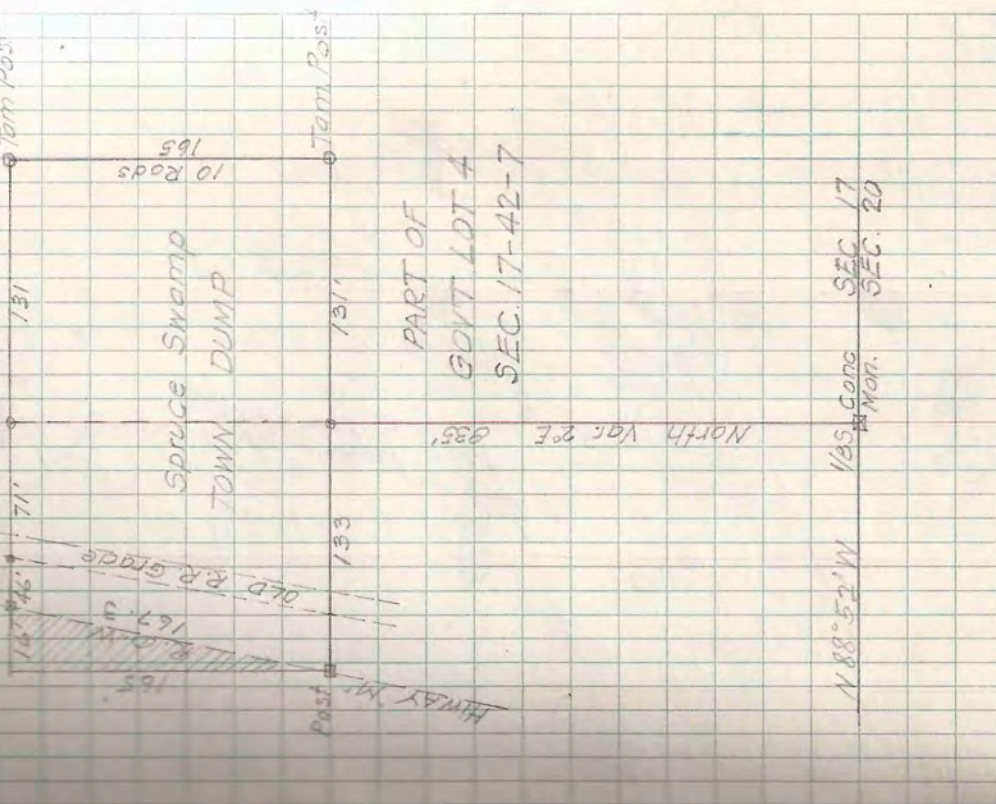
Feb. 5 '55



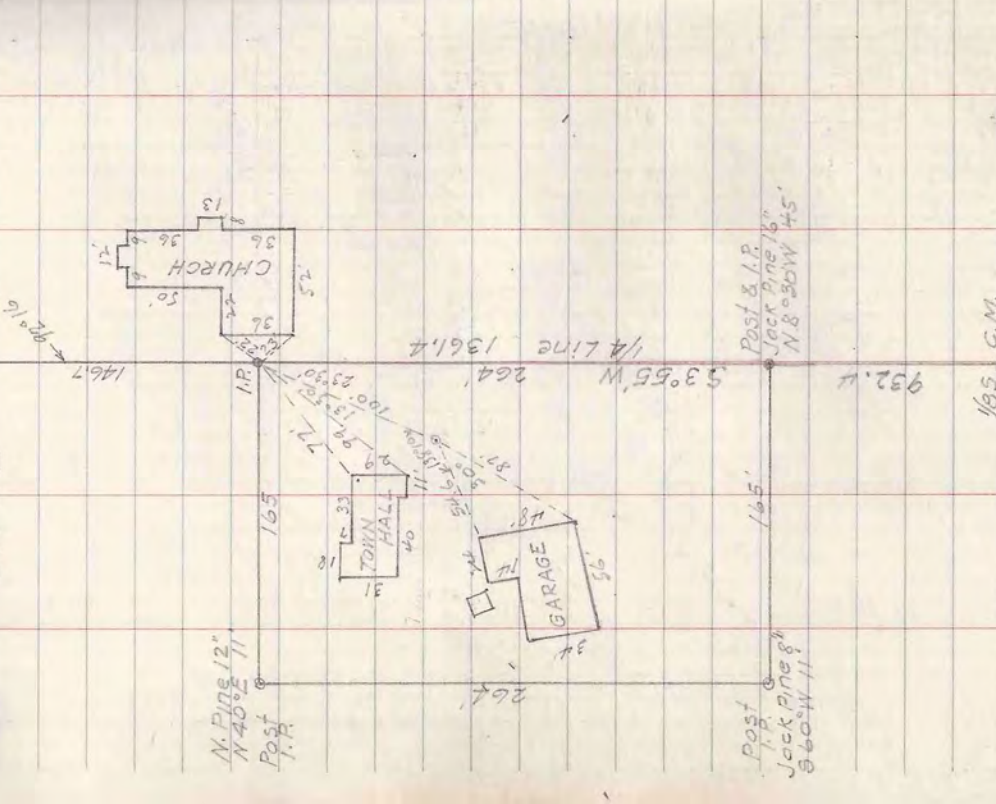
T42N-R7E SEC. 20
NE 1/4 - NW 1/4

Sec. 20 Cor. 588° 52' E 2717.4
1/4 Cor. C.M. 188
1/4 R. 1
588° 21' E

4
Feb. 9, '55
Inst. M. S. Scott
M. S. Gungayne
M. S. Bann

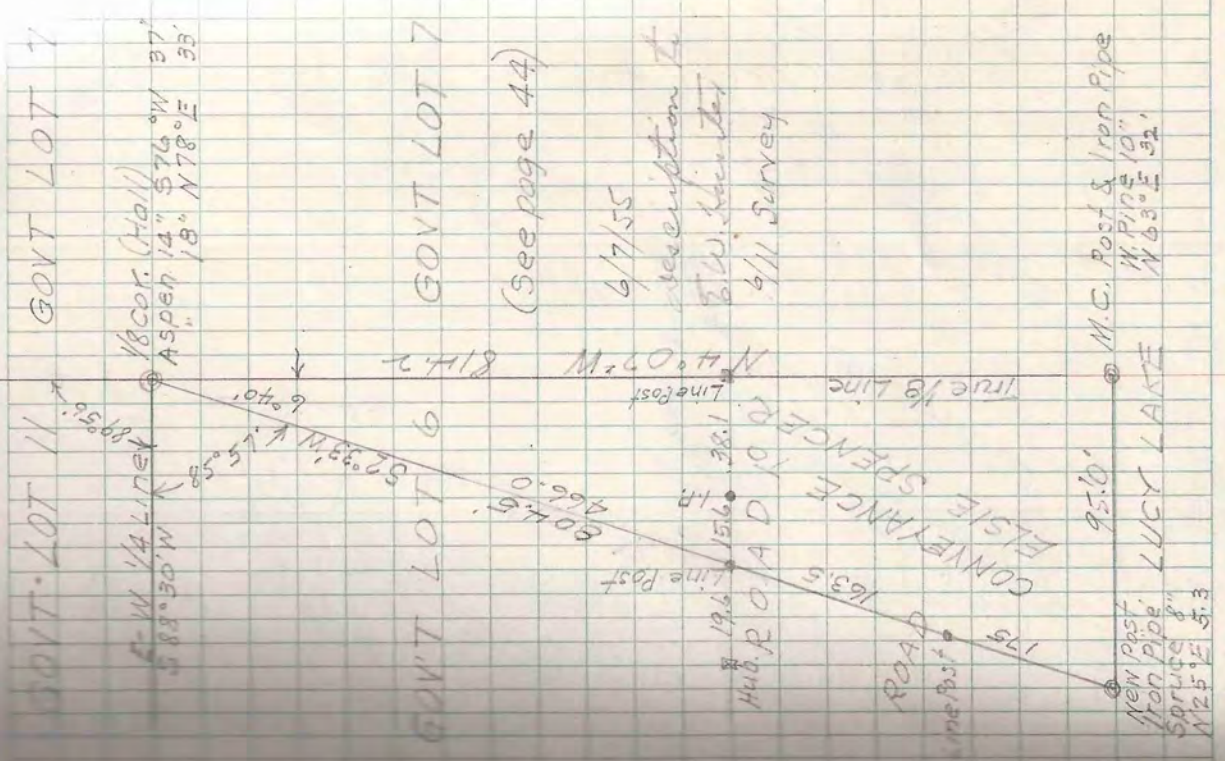
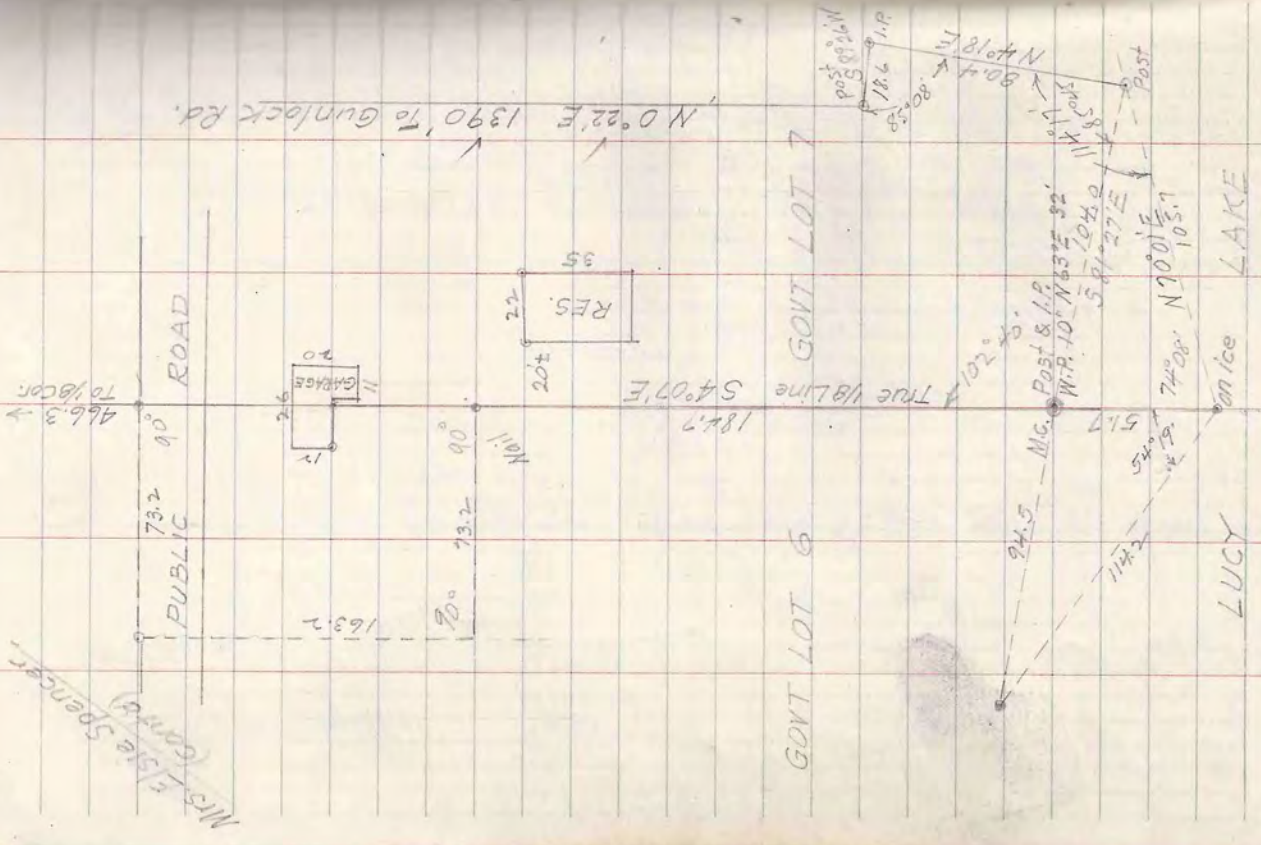


TOWN OF BOULDER CO
SEC. 17
SEC. 20



185 C.M.

932.4
165'
Post & I.P. Jack Pine 8" 56° W 11'
Post & I.P. Jack Pine 16" N 8° 30' W 145'



(See page 44)

6/7/55

description to

E.W. Spencer

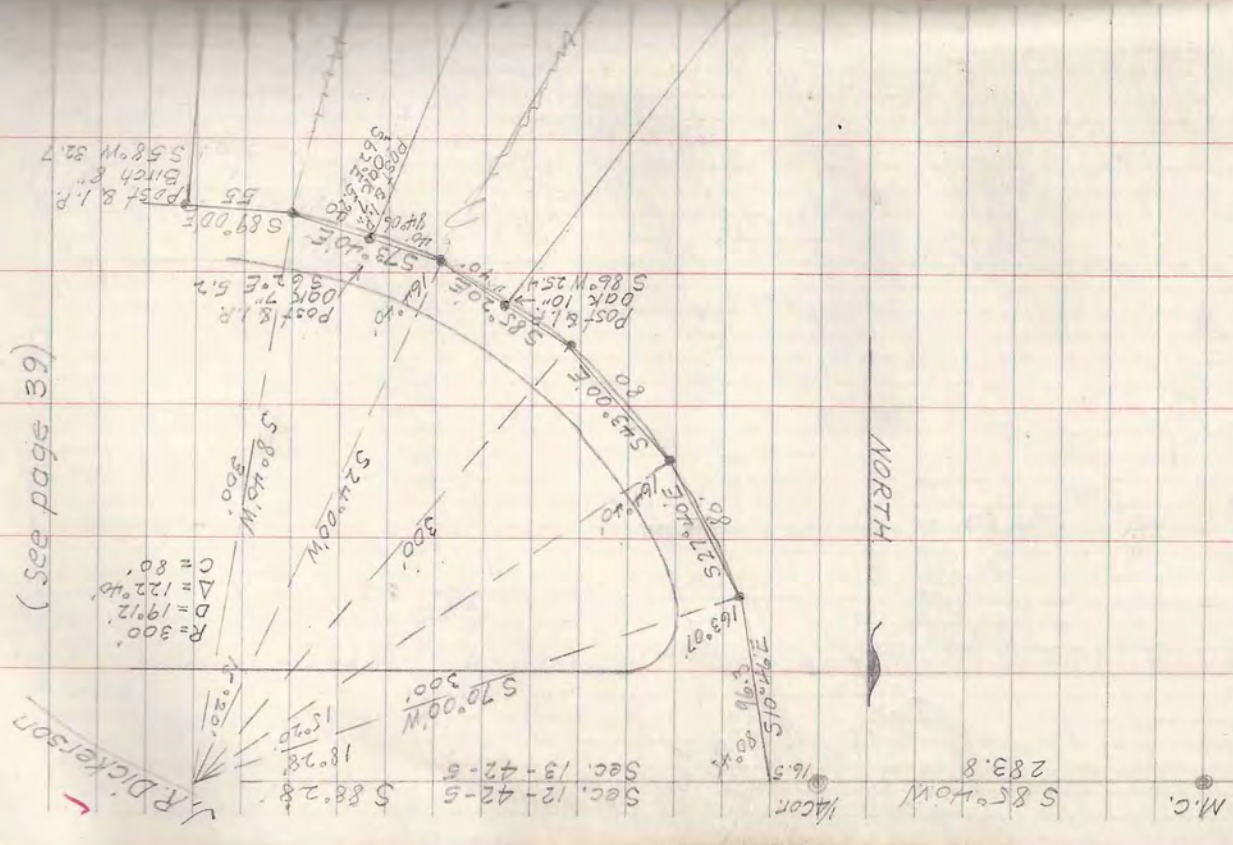
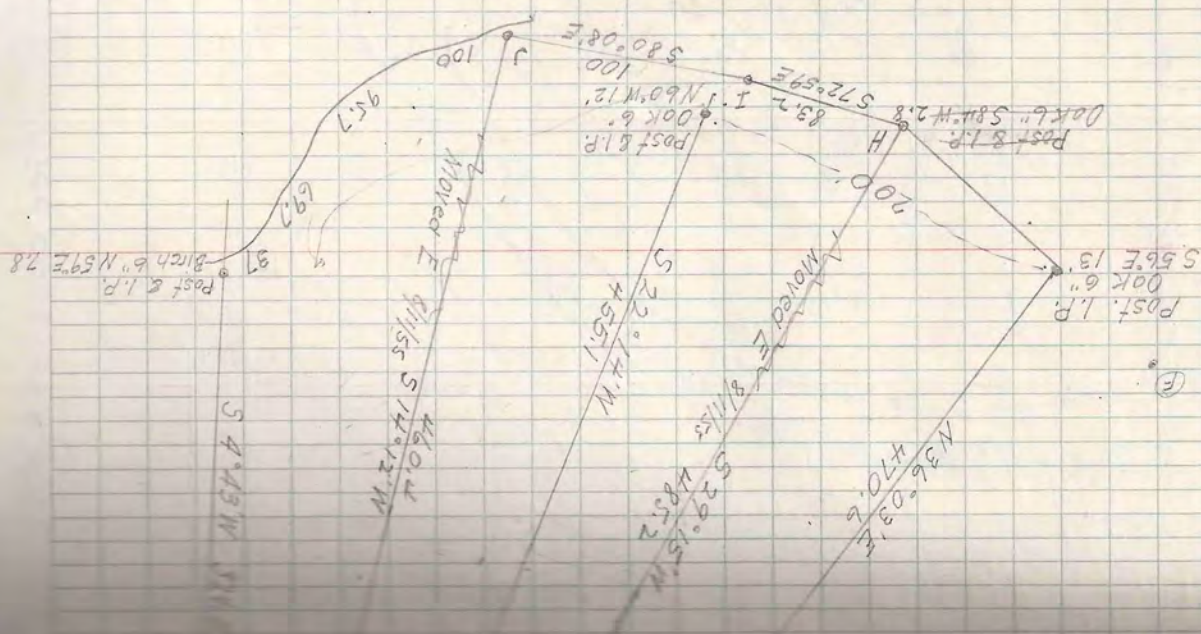
6/11 Survey

M.C. Post & 1/2\"/>

1/2\"/>

1/2\"/>

✓



(see page 39)

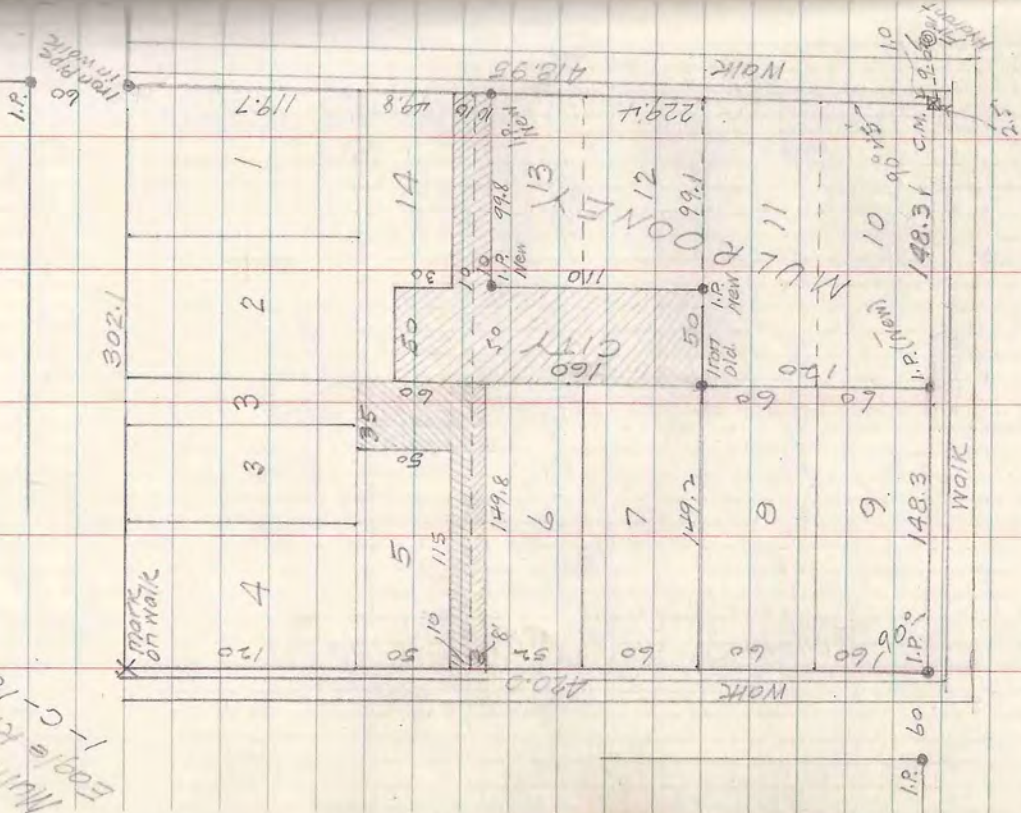
V.R. Dickerson

M.C. 85° 28' 3.8
 1/4 COR 16.5
 279° 01' 50.0
 510° 01' 50.0
 163° 01'
 87° 22' 5
 58° 01' 50.0
 570° 00' 300'
 15° 20'
 18° 28'
 588° 28'
 Sec. 12-42-5
 Sec. 13-42-5
 R=300
 D=19° 12'
 Δ=122° 40'
 C=80°

33-40-10

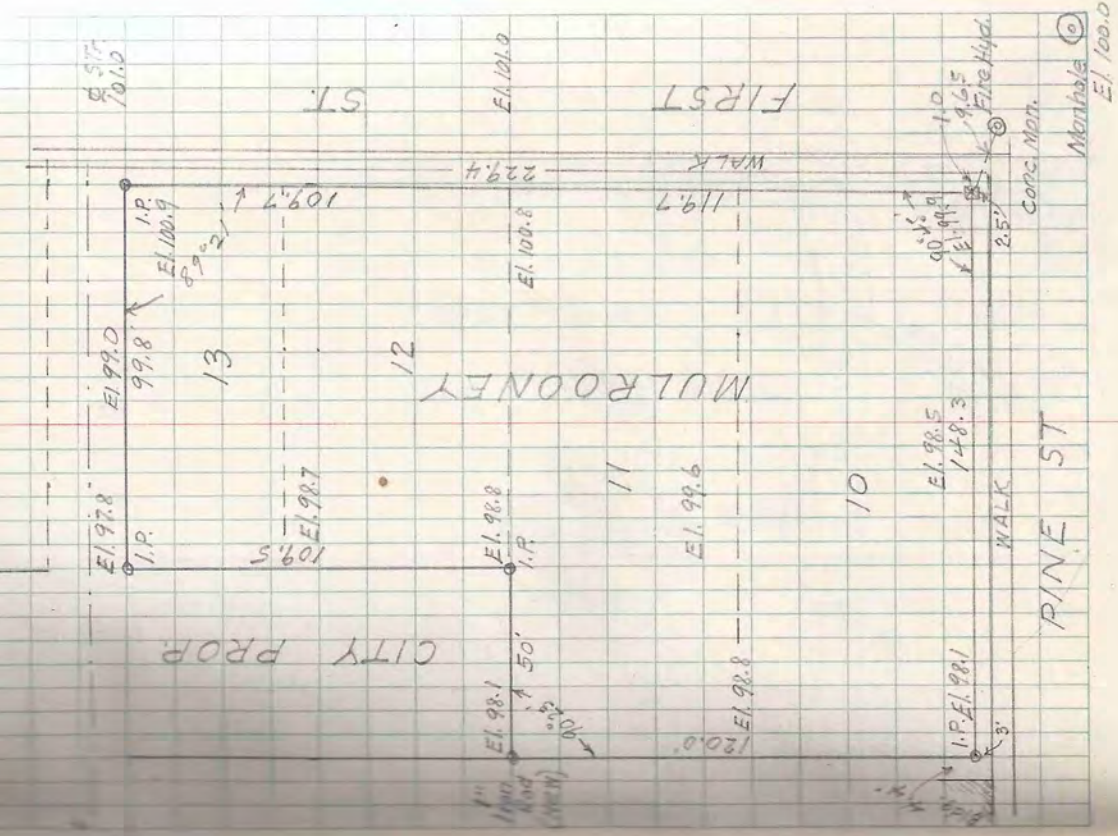
Block 4
Eagle River Plat

Mulrooney
Eagle River
1-C-18



March 28 '55

L.W. Scott
L.W. Behn
L.W. Burgoyne



Monkdale
El. 100.0

MINGQUA COUNTRY CLUB

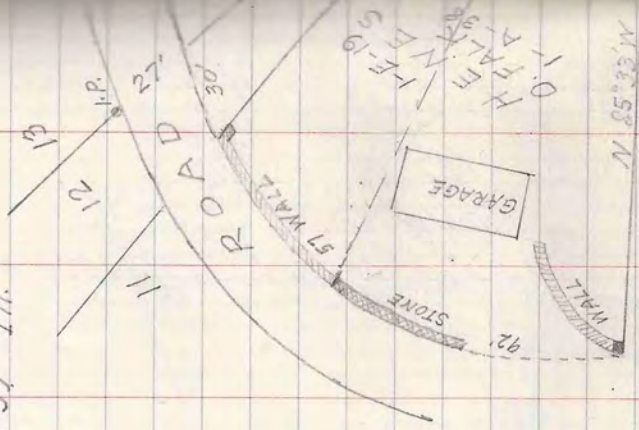
For Harry J. Blum

Armstrong - Blum Mfg. Co.

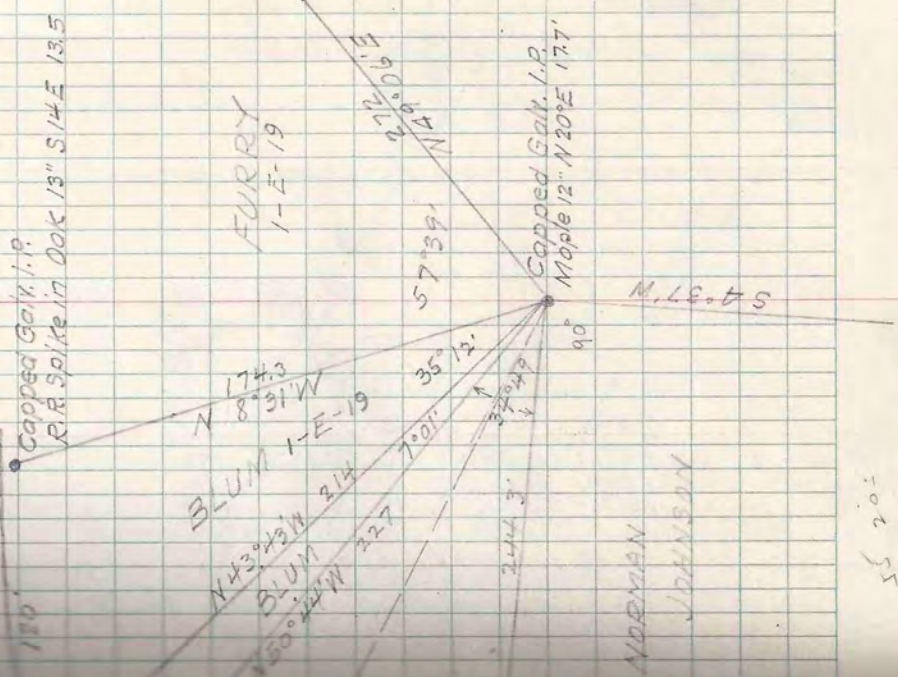
5700 West Bloomingdale Ave

Chicago 39 Ill.

Tel. Merrimac 7-4000



Heres 1-A-38
Blum 1-E-19
Furry 1-E-19

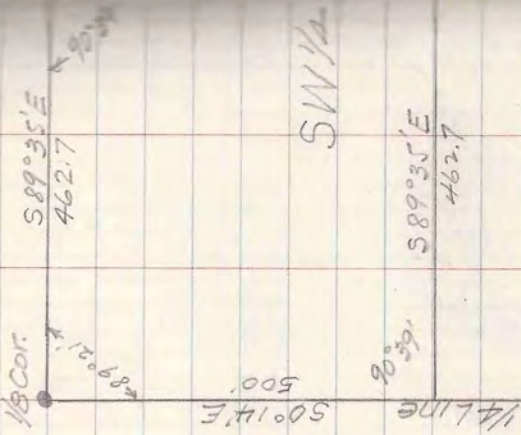


55 205

T 39N-R 6E SEC. 2

SW 1/4 - SE 1/4

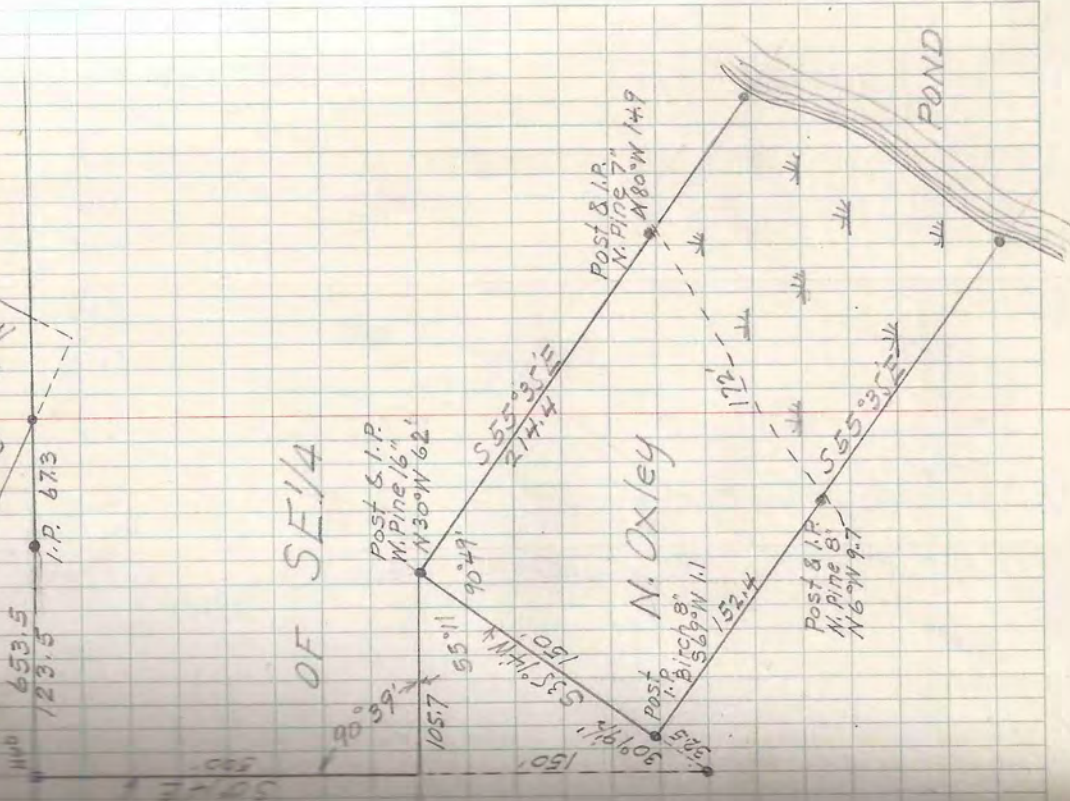
C. J. Larson
D. Oxley
to



(See Book 16)
(Page 48)

W. K. Scott
April 16, 1955

Ed. Burgoyne
M. Behn



T39N-R6E SEC. 11

SW-NE

Em Holz
Albert Nackman
4-9

1/8 COR. 43/4 S.M.
Hwy 51

144.1
I.P. W.P. 5° N 69° W 187
W.P. 8° S 69° E 181

OLD



April 11-16+19

1955

W. M. Scott
Ed Burgoynes
Alb Behn

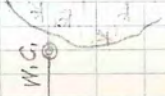
N 89° 17' E
400

ALBERT NACKMAN

300

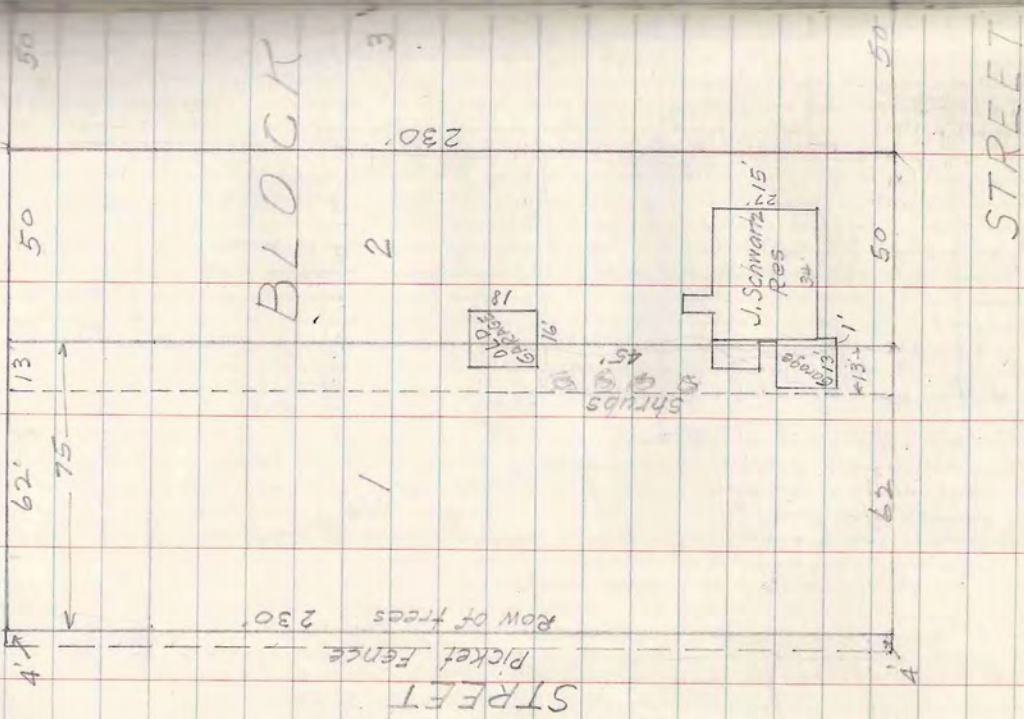
400
N 84° 17' E

400
N 89° 17' E



HAZELHURST

MIKE RYDEN



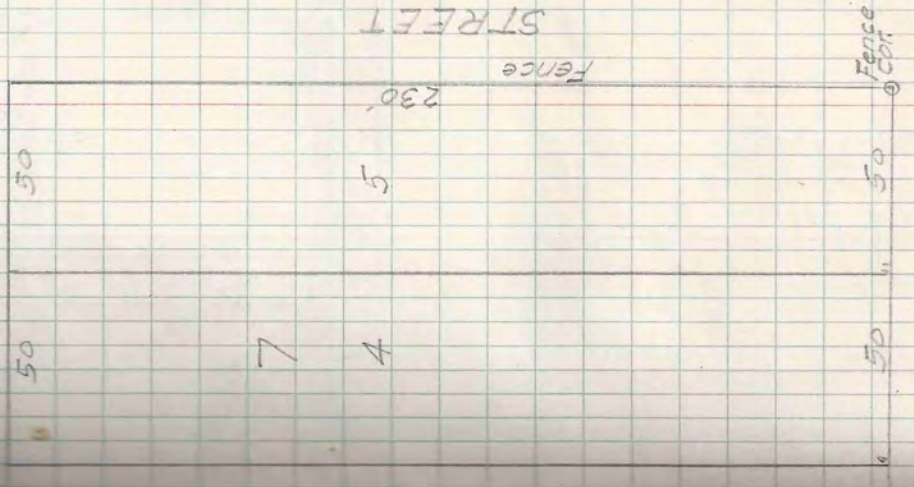
BLOCK

April 7 '65

L. W. Scott

Alb. Behn

Ed. Burgoyne



STREET

STREET

T40N-R10E SEC. 33
 NE 1/4 - NE 1/4
 Eagle River (Unplatted)

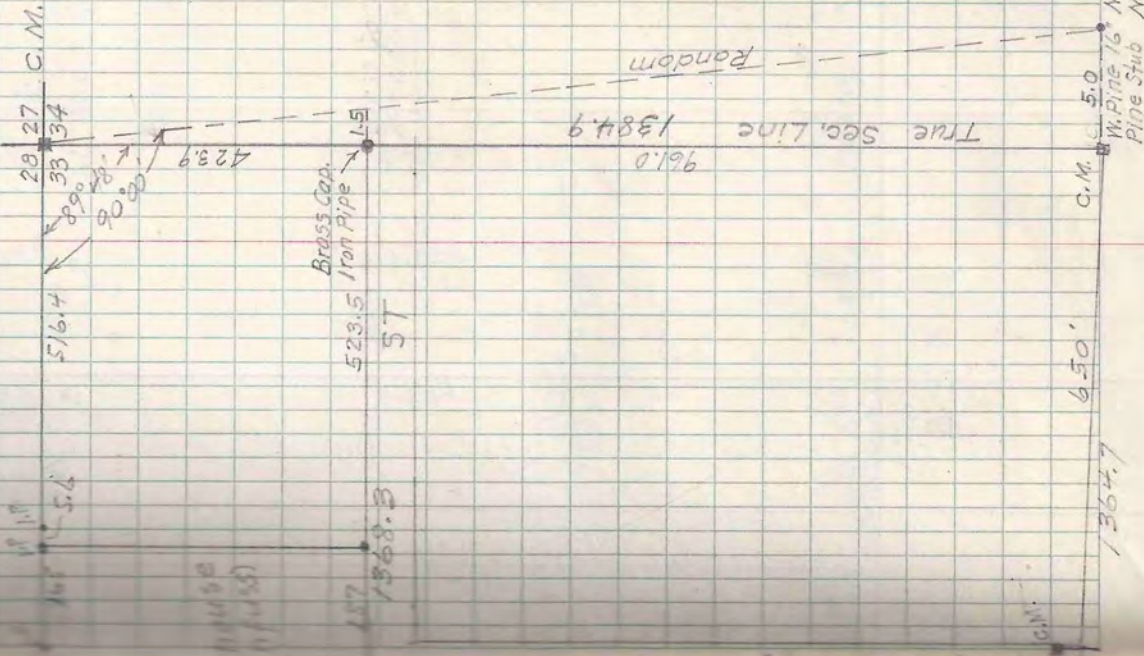


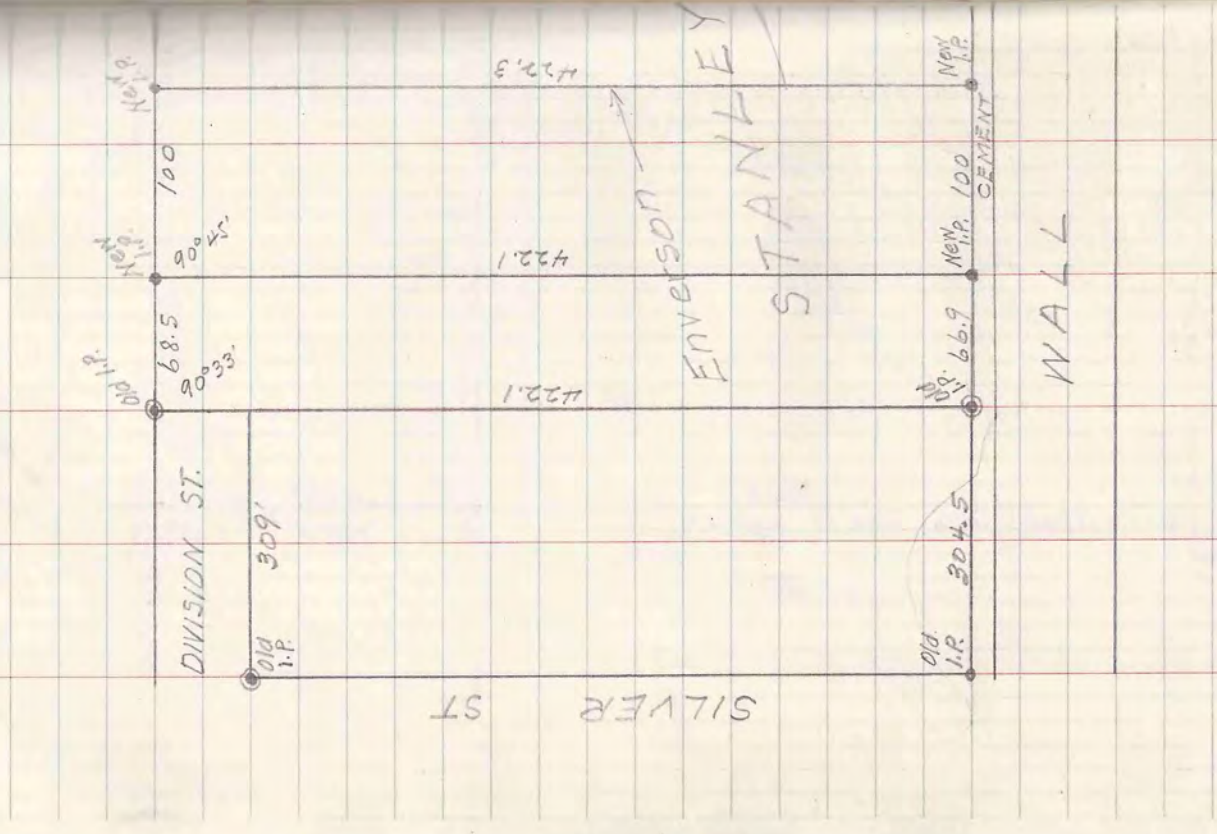
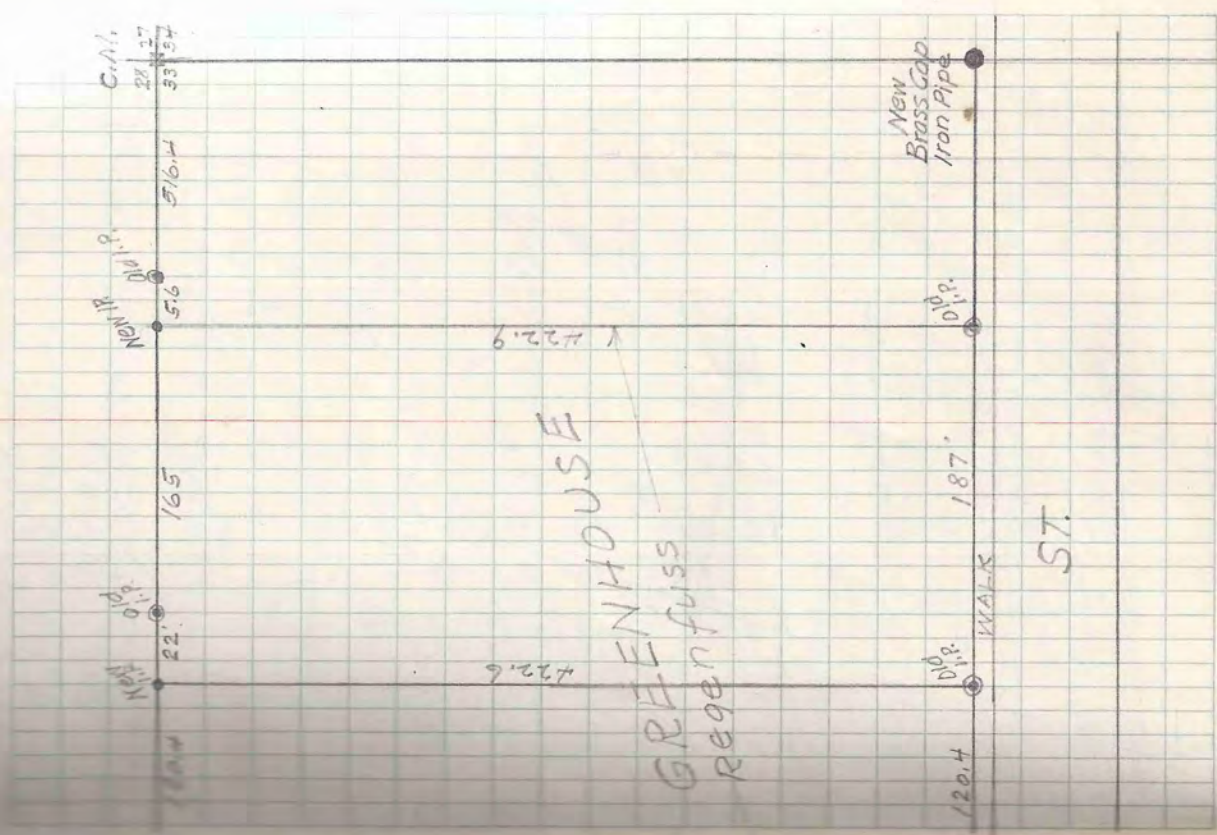
HABRICH ADDN

704.1
 714.1
 116 W Not found
 11 road

L. W. Scott
 W. Burdette
 W. Benn

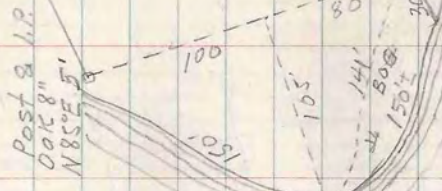
April 20 '55





T 39N-R6E SEC 11 LOT 3

Water Fisher
T 0552 ft
B 0552 ft
B 1-58
B 1-48



BULLHEAD LAKE

April 25, '55

L. W. Scott
Ed. Burgoyne
Al. Behn

Post & I.P.
N. Pine 10" N 25° W 50.6

$S 65^{\circ} 25' W$
338.7

$N 20^{\circ} 17' W$
150

W. BASSSETT

Post & I.P.
BIRCH 7" N 26° W 25.7

Post & I.P.
 $S 85^{\circ} 58' W$
100.8
 $N 19^{\circ} 14' E$
55.4
 $S 54^{\circ} E$
3'

W. BASSSETT
 $S 50^{\circ} 32' W$
341.2
EAVE

$S 70^{\circ} 14' W$
555.14

Post & I.P.
Oak 8" N 49° W 10'
West 10.4'

GOV'T LOT 3

C. H. BOYD
2-B-58

MC
E-W 1/4 Line

GOV'T LOT 4

T 39N - R7E SEC. 7

NE 1/4 - NE 1/4

660
890
460

Approx N 1/4 Cor.

N 89° 52' W

Highway "J"

NW 1/4 - NE 1/4

Zangle

Highway

85° 00'

N 2° 58' W

93° 24'

V8 Cor

Iron Pipe

N Pipe 10" S 24° E 59.2

Oak 16" N 85° W 72.8

1474.2

N 89° 34' W

2643

821.5

1315

← to C/A

W. Scott

April 27

188

Ed. Burgoyne

Ab. Behn

2653.2

NE 1/4 - NE 1/4

Oak 10" S 48° E 6'

569 Oak

660 E

11500 I.P.

Post

50.5

50.8

50.15

ZANGLE

10 ACRES

Post

W.C.

I.P.

N. Pipe 16"

S 22° 44' E 56'

600'

19 Cor. (part)

1. Pipe

Oak 8"

(New Birch 8" S 41° E 46.5

S 41° W 44.7 (Holl) 1. Pipe

S 62° W 57.1

MOREHOUSE

638.2

1328.1

1328.1

N 2° 30' W (Mag)

67° 00'

19 Cor. (part)

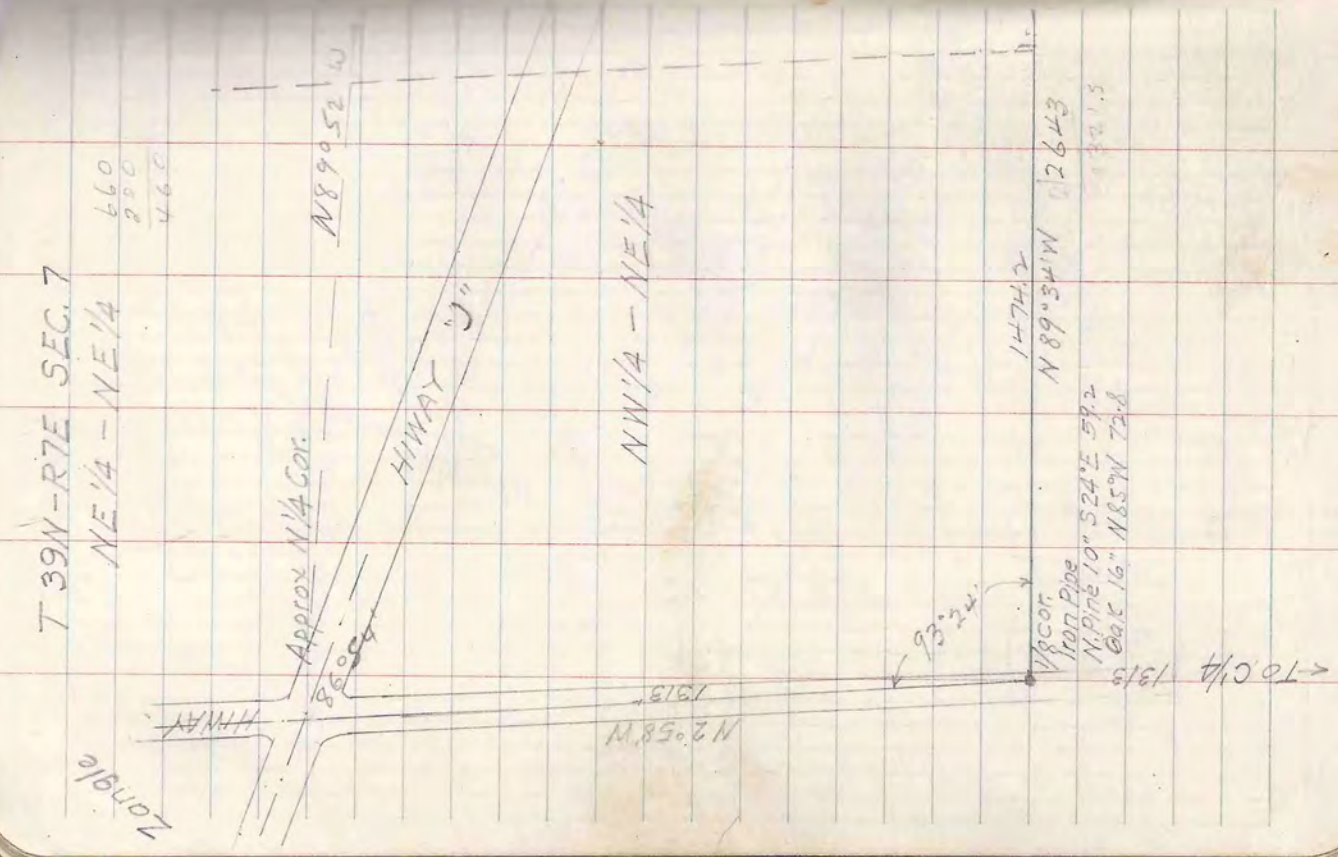
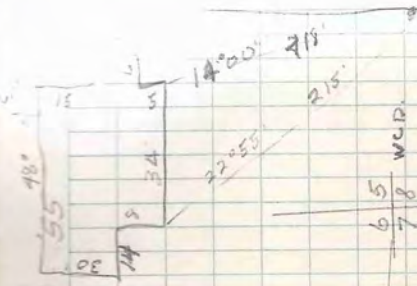
1. Pipe

Oak 8"

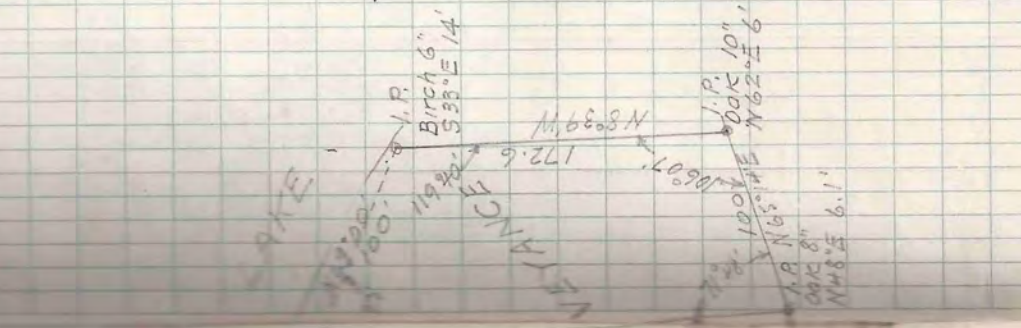
(New Birch 8" S 41° E 46.5

S 41° W 44.7 (Holl) 1. Pipe

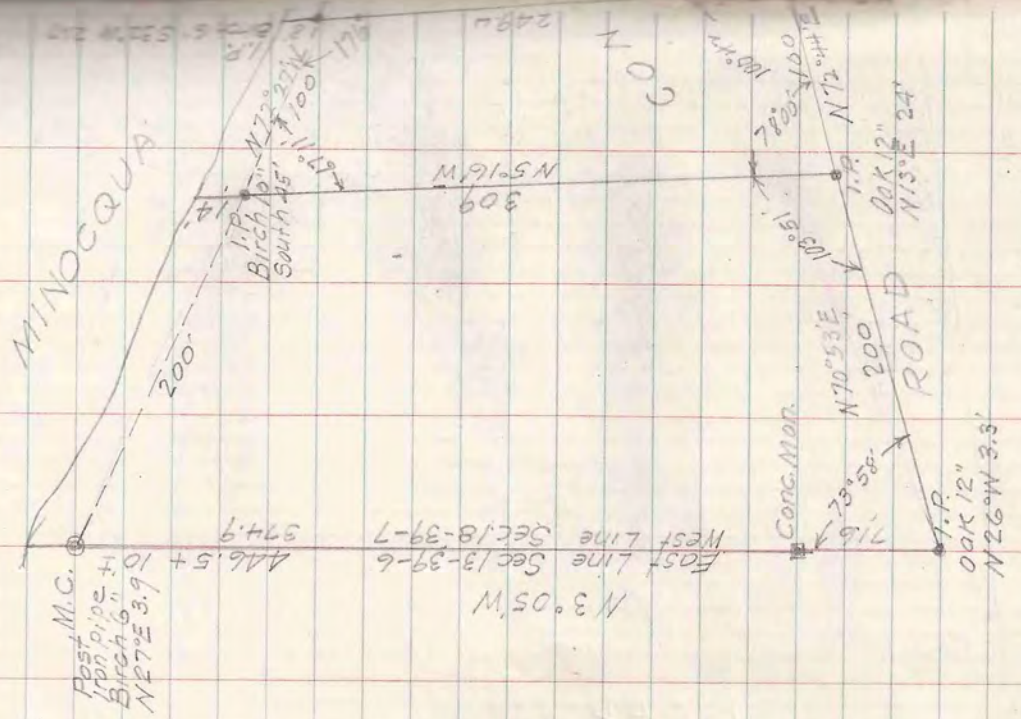
S 62° W 57.1



Albert L. Behn Inst. May 9 '35
 W. Burgoyne



T 39N-R7E SEC. 18 LOT 5



Hunter-Burlingame

T39N-R7E SEC. 19
LOT 2 & NE 1/4 - SE 1/4

Krause
Levit

MID

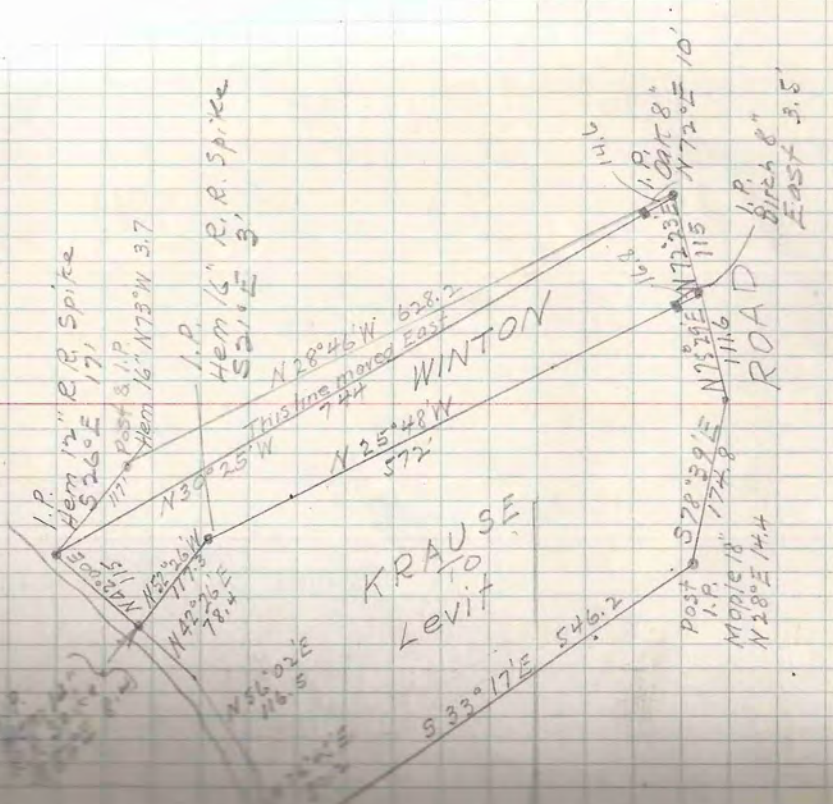
Post
I.P.
Birch
S62°E 113

(see book 14
page 7)

M.C. 80.0 M.C.

L.W. Scott
A. Beho
E. Burdoyne

104, 1955



I.P.
Hem 12" R.R. Spike
S 26° E 17'

Post & I.P.
Hem 16" N 73° W 3.7

I.P.
Hem 1/4" R.R. Spike
S 21° E 3'

N 39° 25' W

N 28° 45' W 628.2

Fishing moved East
724

N 25° 48' W 572

WINTON ROAD

Post
I.P.
Maple 18" N 28° E 175.8

S 78° 59' E 175.8

I.P.
Birch 8" East 3.5

N 72° 00' E 10'

N 73° 23' E 115

N 73° 23' E 116

N 73° 23' E 115

N 73° 23' E 116

N 73° 23' E 115

N 73° 23' E 116

N 73° 23' E 115

N 73° 23' E 116

N 73° 23' E 115

N 73° 23' E 116

N 73° 23' E 115

N 73° 23' E 116

N 73° 23' E 115

N 73° 23' E 116

N 73° 23' E 115

N 73° 23' E 116

N 73° 23' E 115

N 73° 23' E 116

N 73° 23' E 115

N 73° 23' E 116

N 73° 23' E 115

N 73° 23' E 116

N 73° 23' E 115

N 73° 23' E 116

N 73° 23' E 115

N 73° 23' E 116

N 73° 23' E 115

N 73° 23' E 116

N 73° 23' E 115

N 73° 23' E 116

N 73° 23' E 115

N 73° 23' E 116

N 73° 23' E 115

N 73° 23' E 116

N 73° 23' E 115

N 73° 23' E 116

N 73° 23' E 115

N 73° 23' E 116

N 73° 23' E 115

N 73° 23' E 116

N 73° 23' E 115

N 73° 23' E 116

N 73° 23' E 115

N 73° 23' E 116

N 73° 23' E 115

N 73° 23' E 116

N 73° 23' E 115

N 73° 23' E 116

N 73° 23' E 115

N 73° 23' E 116

N 73° 23' E 115

N 73° 23' E 116

N 73° 23' E 115

N 73° 23' E 116

N 73° 23' E 115

N 73° 23' E 116

N 73° 23' E 115

N 73° 23' E 116

N 73° 23' E 115

N 73° 23' E 116

N 73° 23' E 115

N 73° 23' E 116

N 73° 23' E 115

N 73° 23' E 116

N 73° 23' E 115

N 73° 23' E 116

N 73° 23' E 115

N 73° 23' E 116

N 73° 23' E 115

N 73° 23' E 116

N 73° 23' E 115

N 73° 23' E 116

N 73° 23' E 115

N 73° 23' E 116

N 73° 23' E 115

N 73° 23' E 116

N 73° 23' E 115

N 73° 23' E 116

N 73° 23' E 115

N 73° 23' E 116

N 73° 23' E 115

N 73° 23' E 116

N 73° 23' E 115

N 73° 23' E 116

N 73° 23' E 115

N 73° 23' E 116

N 73° 23' E 115

N 73° 23' E 116

N 73° 23' E 115

N 73° 23' E 116

N 73° 23' E 115

N 73° 23' E 116

N 73° 23' E 115

N 73° 23' E 116

N 73° 23' E 115

N 73° 23' E 116

N 73° 23' E 115

N 73° 23' E 116

N 73° 23' E 115

N 73° 23' E 116

N 73° 23' E 115

N 73° 23' E 116

N 73° 23' E 115

N 73° 23' E 116

N 73° 23' E 115

N 73° 23' E 116

N 73° 23' E 115

N 73° 23' E 116

N 73° 23' E 115

N 73° 23' E 116

N 73° 23' E 115

N 73° 23' E 116

N 73° 23' E 115

N 73° 23' E 116

N 73° 23' E 115

N 73° 23' E 116

N 73° 23' E 115

N 73° 23' E 116

N 73° 23' E 115

N 73° 23' E 116

N 73° 23' E 115

N 73° 23' E 116

N 73° 23' E 115

N 73° 23' E 116

N 73° 23' E 115

N 73° 23' E 116

N 73° 23' E 115

N 73° 23' E 116

N 73° 23' E 115

N 73° 23' E 116

N 73° 23' E 115

N 73° 23' E 116

N 73° 23' E 115

N 73° 23' E 116

N 73° 23' E 115

N 73° 23' E 116

N 73° 23' E 115

N 73° 23' E 116

N 73° 23' E 115

N 73° 23' E 116

N 73° 23' E 115

N 73° 23' E 116

N 73° 23' E 115

N 73° 23' E 116

N 73° 23' E 115

N 73° 23' E 116

N 73° 23' E 115

N 73° 23' E 116

N 73° 23' E 115

N 73° 23' E 116

N 73° 23' E 115

N 73° 23' E 116

N 73° 23' E 115

N 73° 23' E 116

N 73° 23' E 115

N 73° 23' E 116

N 73° 23' E 115

N 73° 23' E 116

N 73° 23' E 115

N 73° 23' E 116

N 73° 23' E 115

N 73° 23' E 116

N 73° 23' E 115

N 73° 23' E 116

N 73° 23' E 115

N 73° 23' E 116

N 73° 23' E 115

N 73° 23' E 116

N 73° 23' E 115

N 73° 23' E 116

N 73° 23' E 115

N 73° 23' E 116

N 73° 23' E 115

N 73° 23' E 116

N 73° 23' E 115

N 73° 23' E 116

N 73° 23' E 115

N 73° 23' E 116

N 73° 23' E 115

N 73° 23' E 116

N 73° 23' E 115

N 73° 23' E 116

N 73° 23' E 115

N 73° 23' E 116

T42N-R7E SEC 17

M.C. 1318.6' CONC. P.

1200 CLANK

700 CLANK

1318.6' 700

GOVT LOT 7

W.C. 10'

N 86° 18' E 1334'

1/8 COR. CONC. MON. OAK 8" N 26° W 19.8' OAK 10" S 70° W 22'

N.O.H.W. 1320' N 10° 54' W

18.17 19.20

N 86° 18' E 1357.7' G.L.O. Brass Cap 1924 Pine #1 S 83° 30' W 153.5 J. Pine #1 S 10° W E 89.4

Jack R. 91.8' R.E. Spike in pavement

May 1955

192.12' S 65° W 19.8' Jack R. S 81° E 23.9'

M.C. Post & 1/8 CONC. Mon. 120'

GOVT LOT 5

W.C. 10'

N 86° 18' E 1334'

1/8 COR. CONC. MON. SLOPE 9.7' N 10° N 29° E 16'

1320' N 2° 56' W

GOVT LOT 6

N 23° W 25.7' 10' N 40° E 34'

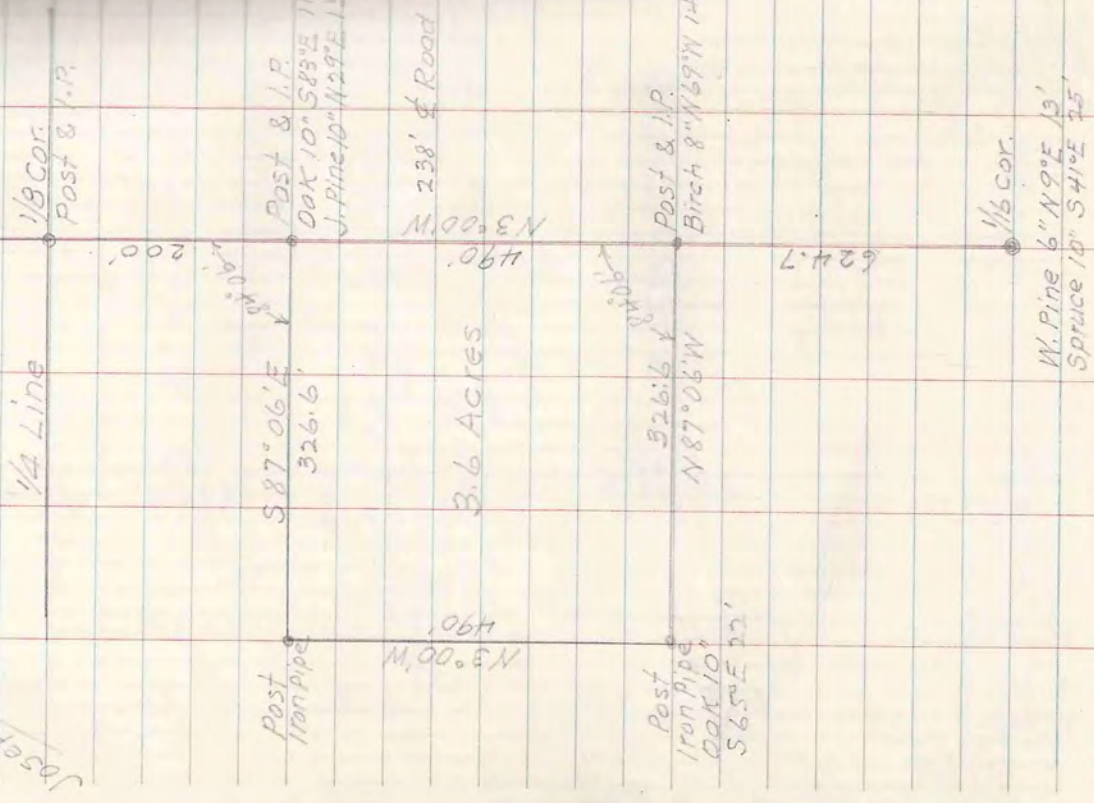
1357.7' N 86° 18' E

1/4 COR. CONC. MON. M.P. 15" N 29° W 68.2' J.P. 12' S 6° W 82.2' N 88° 45' E 1359.5'

1.P. in road

T39N-R6E. SEC. 2

NW-SW



Post & I.P.
Oak 10" 589° 11"
J. Pine 10" 429° 13"

238' & Road

Post & I.P.
Birch 8" N 69° W 14"

1/8 Cor.
W. Pine 6" N 9° E 13'
Spruce 10" S 41° E 25'

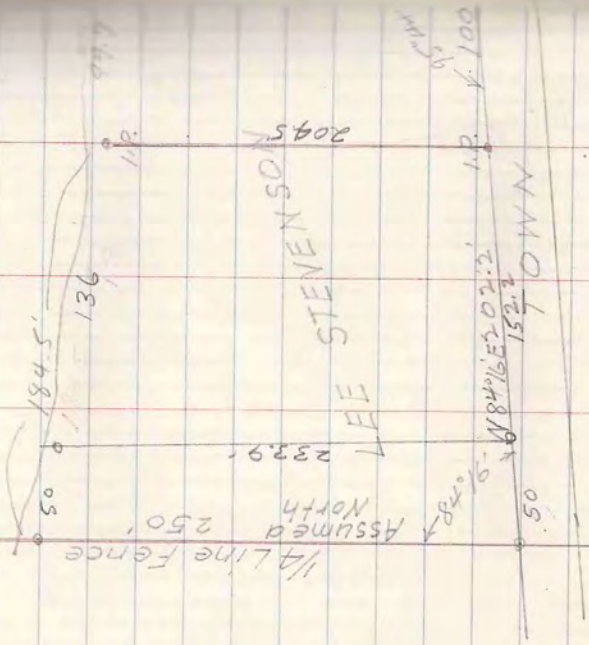
L. W. Scott

May 1955

T39N-R6E SEC. 3 LOT 2

Corner to Stegemeyer

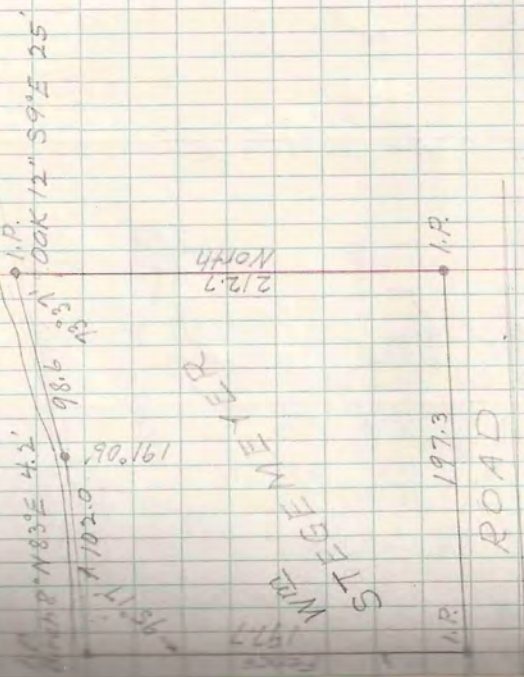
Johnson



L.W. Scott
Ed. Burgeyne
A.L. Behn

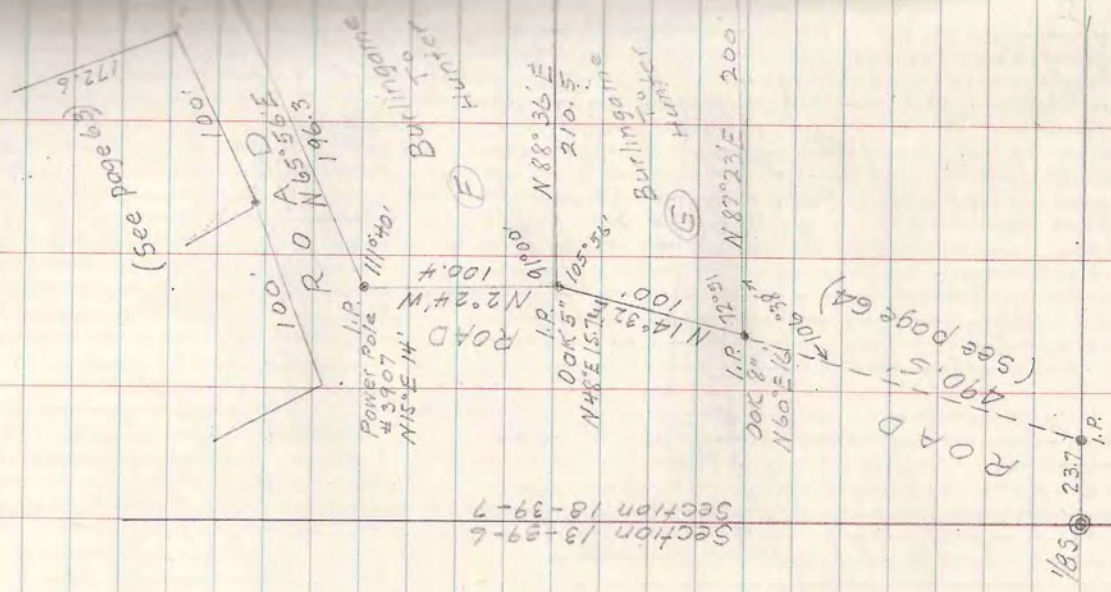
May 21 1977

Lote



T 39 N - R 7 E - SEC 18 - LOT 5

Hunter-Burlingame
Timberlone

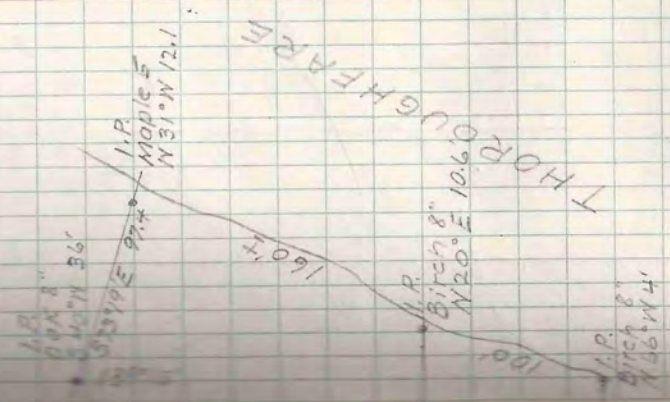


Section 13-59-6
Section 18-39-7

185 @ 23.7 I.P.

L. W. Scott
M. Behn
J. D. Burgoyne

May 25 1955

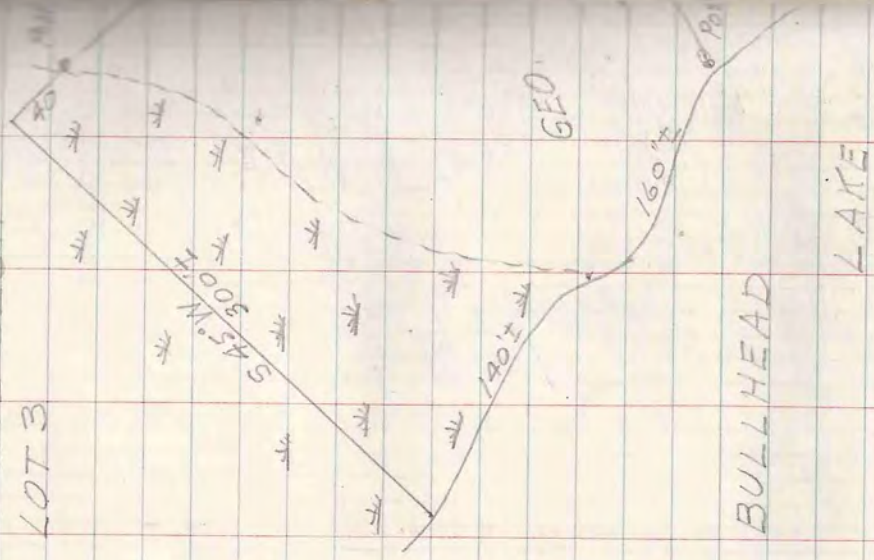


THOROUGHFARE

T 39N-R6E SEC 11

LOT 3

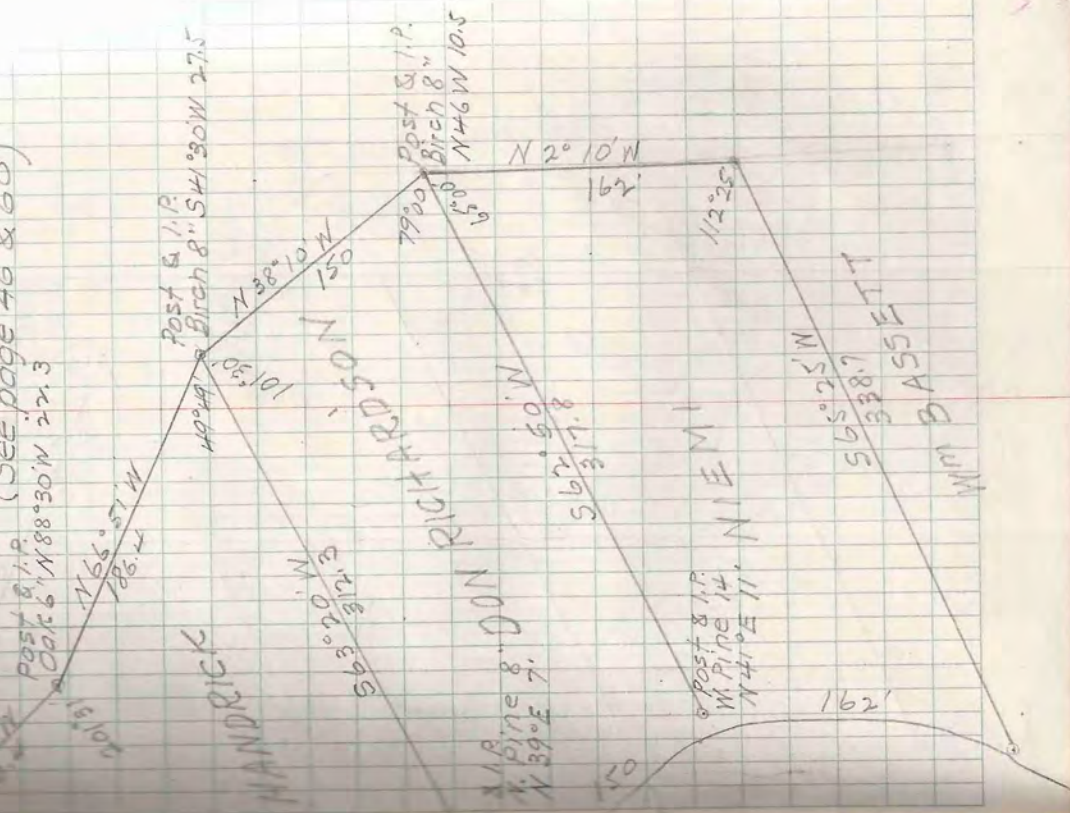
Water Fisher
2-A-H
2-B-42



May 1955

L.W. Scott
Al. Behn
Ed Burgoyne

(See page 46 & 60)



SEC. 11-39-6 NW 1/4

2523.46 N
2789.79 W
3 2 S 87° 53' W
10 11 New Post 12/19/59 1327.6
M. Pine 10"
S 80° E 31.8
(see Book 9 pg 9)
1/8 Cor
Not set

NW 1/4 - NW 1/4

2523.5
1285.86 N
1426.47 W
1/8 Cor
1286.7 (comp)
N 1° 38' W

1261.75 N 1/8 Cor
2784.70 W Not set
1356.7
175 88.6
175 88.6
Swamp
200
395
200
1/8 Cor
1047.2 W

M.C.

GOV'T LOT 3

2779.60 W
W 1/4
in Lake
N 0° 14' W
1387.8
West 1387.8
1/8 Cor
Post 8/1/2
0 0 N
1387.8
1387.8
112.6 H 20
16.2 P 100 1/4
884
Bonds LN
403.5 Hub
559.7
678.2
806.2
Woods
1286.7 (comp)
N 1° 38' W

W. N. Scott

M. Behn
Ed. Burgoyne

NX 1 Iron Pipe

2621.58 N
136.25 W
M. Pine Sta. S 61° E 33.3
M. " 14° S 26° W 33.3
W " 8" N 85° W 10.0

NE 1/4 - NW 1/4

1311.15 N
58.01 W

1/8 Cor
1 1/2 W edge of pavement
M. Pine 5" N 69° W 28.7
W. " 8" S 69° E 48.1

GOV'T LOT 2

1588.58 W
1368.3
1900.0
1679.05
555.63
155.23
600.2
N 2° 30' W 1312.6
81° 22'

0 0
0 0

1/4 Iron rod
Highway Conc. Mon.
(See Book 4 Page 6)

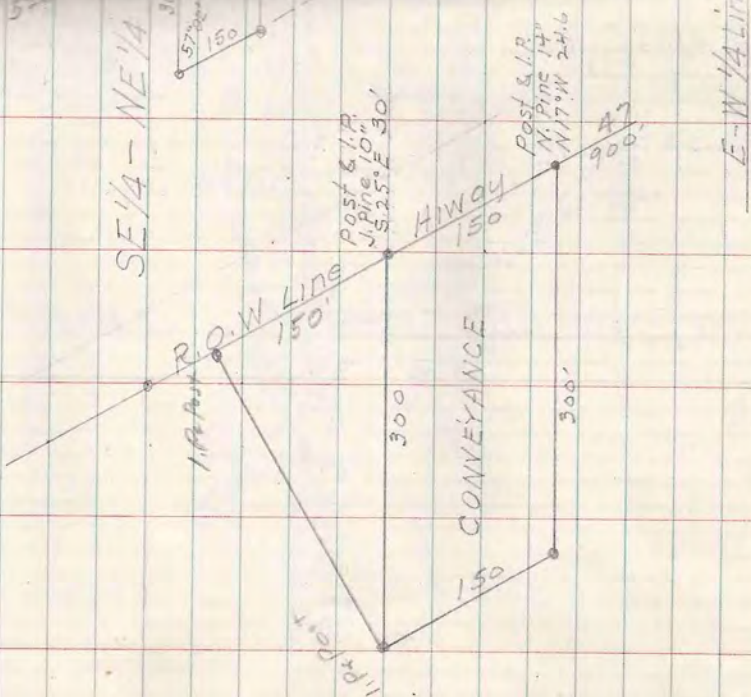
June

T39N-R6E SEC. 12

SE 1/4 - NE 1/4

Mrs. Gus Eider
T-C-20

1/16 Cor.
588°30'W.
1310' I.P.



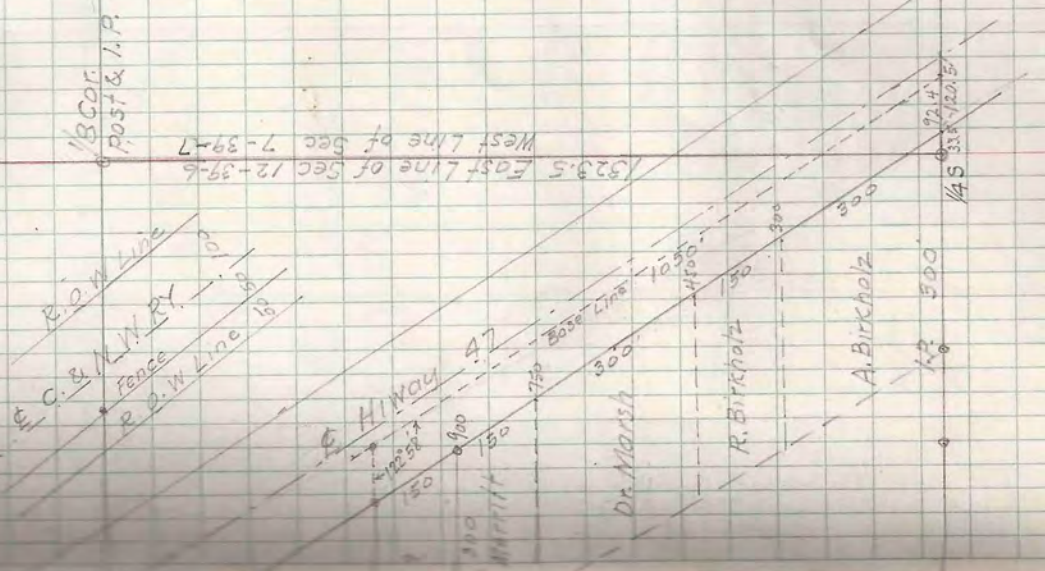
E-W 1/4 Line

W. Scott

M Behn

Ed Burgoyne

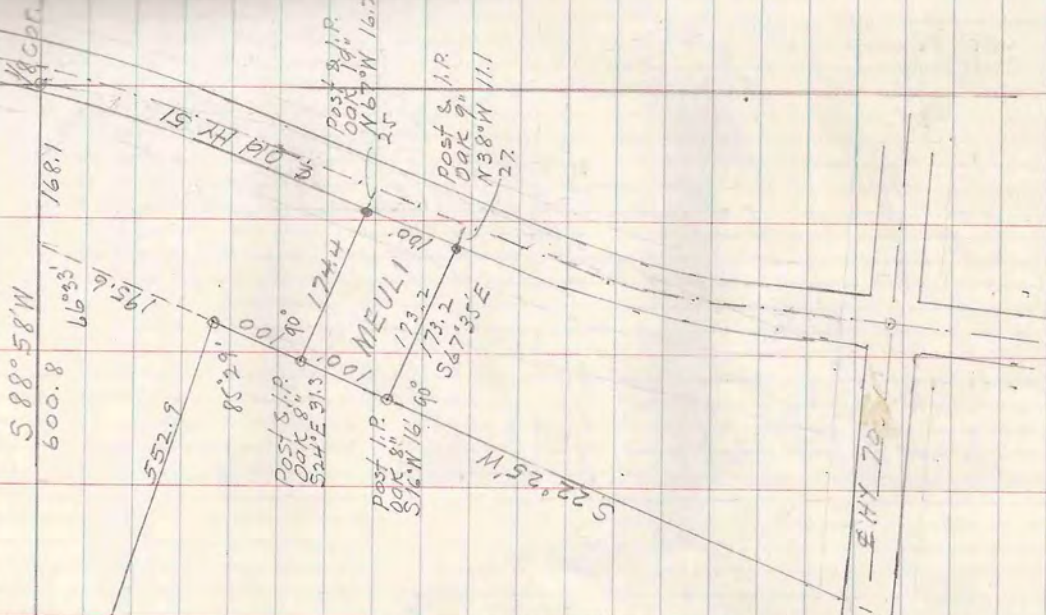
June 6



1/4 S. 31°-120.5''
1/4 S. 31°-120.5''

T39N-R6E SEC. 11

W. S. Fisher
Harvard High School



W. Scott
M. Behn
Ed. Burgoyne

June 23