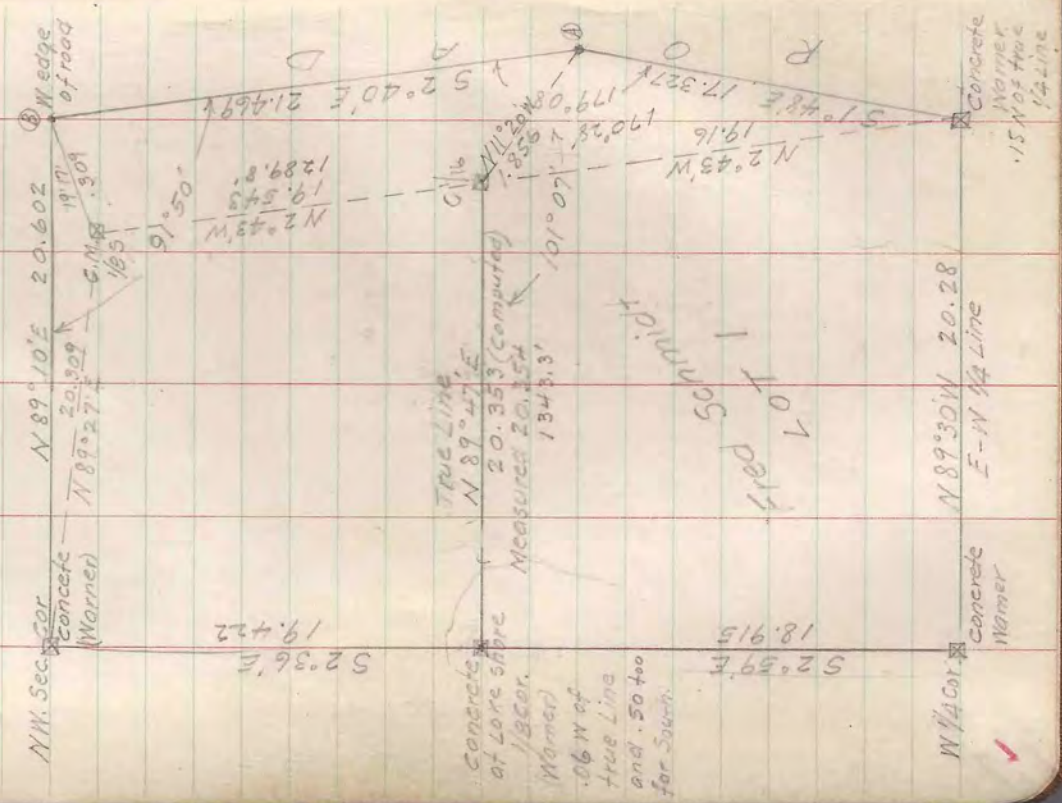


Red Schmidt

T40N-R6E SEC. 35

To set C 1/16 of NW 1/4 Oct 16/18 48
 Survey based on previous survey
 of exterior lines of section
 See Book VI Page 31



NW Sec. Cor. Concrete Marker
 N 89° 10' E 20.602
 W edge of road
 19' N
 19.501
 C.M. 1/8
 165

Concrete at Lore Sabre Marker
 TRUE LINE
 N 89° 47' E
 20.353 (Computed)
 Measured 20.254
 1343.3'

N 1/4 Cor. Concrete Marker
 N 89° 30' W 20.28
 E-N 1/4 Line

T40N-R6E SEC. 35

COORDINATES				
N	S			E
NW Sec. Cor	0			00
8	.300			20.600
True NW 1/8 on N 1/4	195			20.309
Iron Rod?	241			20.044
A		21.146		21.690
N 1/8 on 1/4 line		38.464		22.144
N 1/8 " "		19.402		879
N 1/8 " "	195			20.309
N 1/8 " 1/4 "		19.250		41.493
C 1/16 of NW 1/4		19.326		21.235
-- TRUE LINES --				
C 1/16 to N 1/8		N 2° 43' W	Dist. -	19.543
" "		S 2° 43' E	"	19.160
" "		N 89° 47' E	"	20.258
" "		S 89° 47' W	"	20.353
At "A" from S 1/8 Cor. S 1° 48' E				
Angle 170° 28' to N 11° 20' W.				
Dist. 1.856 " True C 1/16				
Set conc. Mon. in road ditch. Reference post 5' N				
Set Conc. Mon. of W 1/8 on N line of 20.309 West				
of NW Sec. Cor. in line with West M.C. on N line.				
Norway 7° N 62 1/2' E 70.4				
" " 6" S 63 1/2' E 73.6				

10 M. J. Chapman

T 40 N - R 5 E SEC. 27

To locate Gov't Lot 2
For John J. Chapman

4834 W. Altgeld St Chicago Ill.

Oct. 22 '48

North Line

NE cor. Post + I.P. in fence cor. Ogl. NE. B.T. OK.
Random west Var. 1°15'E
Sta A north of main road - W of private Rd.
40.00 Temporary N 1/4 cor.
N.W. cor. Old post and I.P. Both Ogl. B.T.s OK.

Set new post and marked

W. Pine 12" N 26°W 65.6

W. Pine 10" N 14°E 63.6

Random East Var. 0°30'E Angle 181°59' from dr

14.437 Δ Cr At Cr 179°58' Large Pine on line.

6.803 A Dr At Dr 182°55'

1.00 Δ E2 At E2 174°10'

1.00 Δ F2 At F2 182°29'

17.781 Temp. N 1/4 cor. 88°20' left 1.903

to temp. N 1/4 cor on random from NE cor.
86°30' tie-in.

N 1/4 cor. True line N 88°57'W Mid-distance 40.467

At temp N 1/4 Angle from W 18°49' to 571°40'W

Dist .572 to true N 1/4 cor.

Set Oak Post and iron pipe

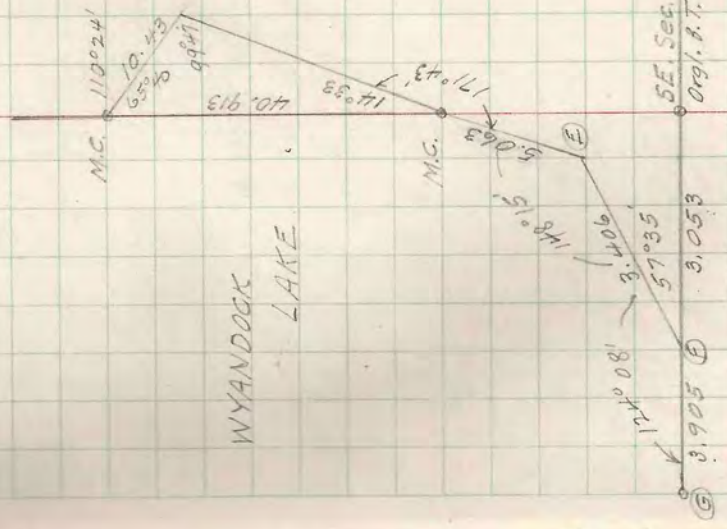
W. Pine 16" S 43°W 69.4'

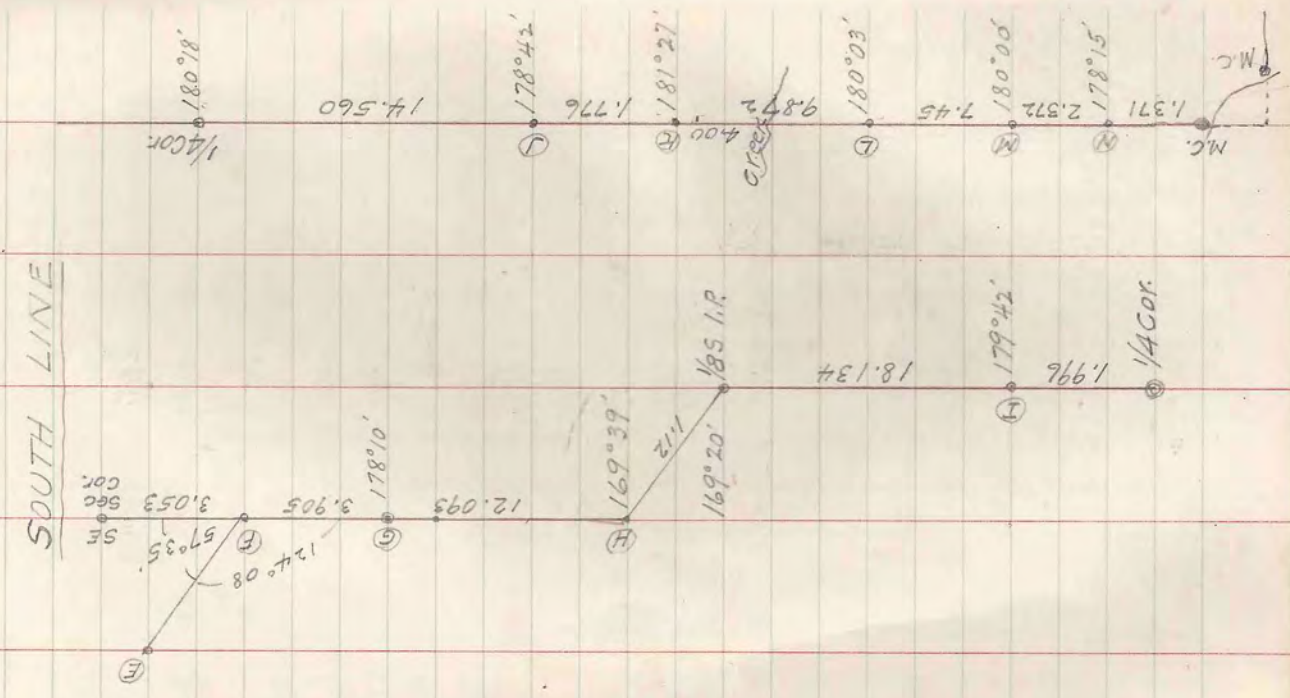
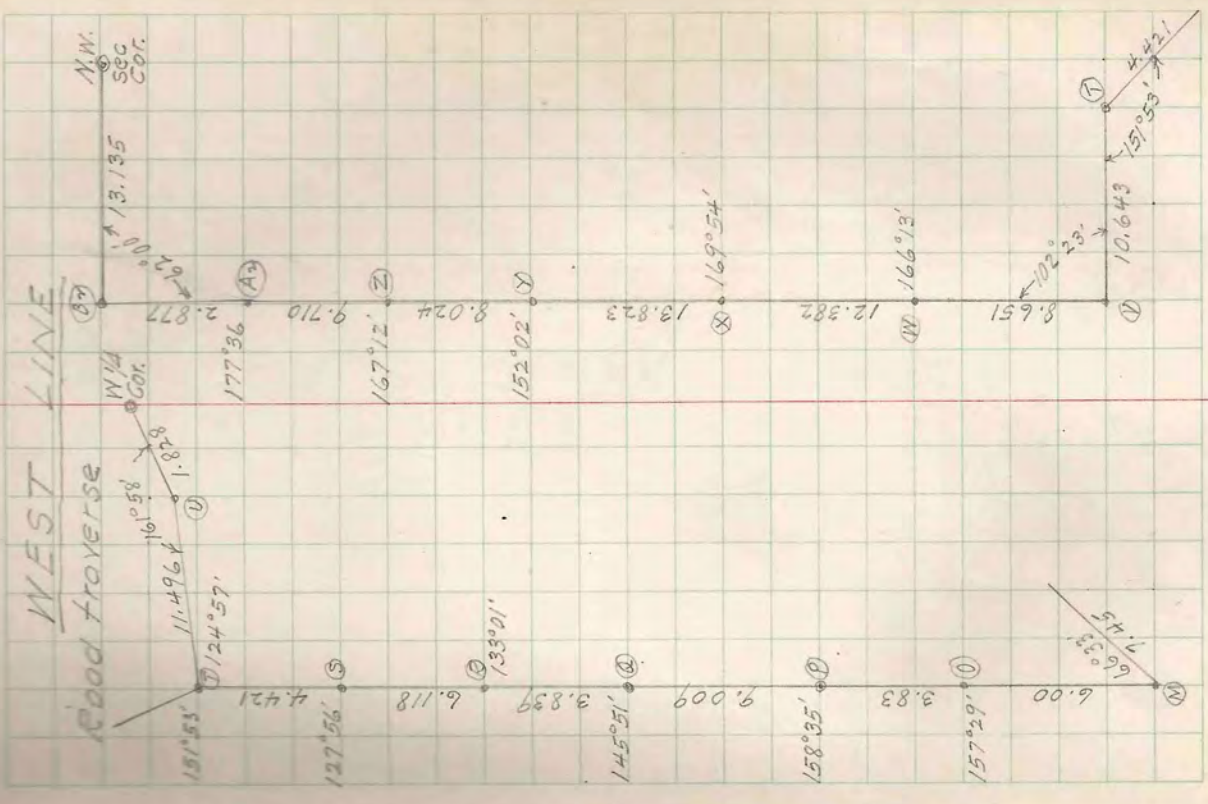
W Pine 34" S 46 1/2 E 70.5' 1/4 N 10"

10 M. J. Chapman
4834 W. Altgeld St Chicago Ill.
10 M. J. Chapman
4834 W. Altgeld St Chicago Ill.

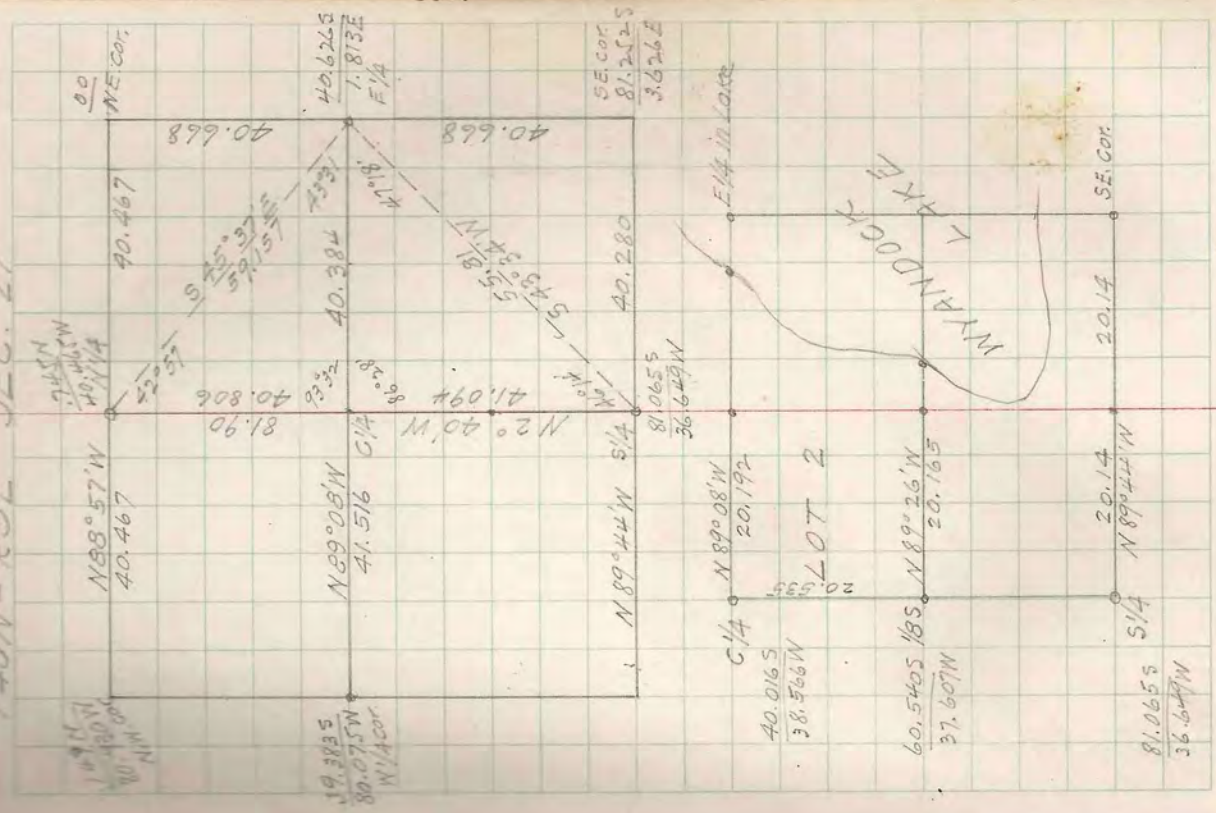
East Line

NE. cor. Random South Var. 1°15'E
Angle from W random 89°52' (left)
6.484 (A) at road gate 12.3 SE of B.T. (Half)
At A 179°50' 13.106 to B
" B 149°55' 874 to 1/8 cor Post + I.P.
" C 200°14' 3.990 " C
" D 193°03' 5.465 " D
" D 180°03' 24670 North M.C.
Old post + B.T.s.





T40N-R5E SEC. 27



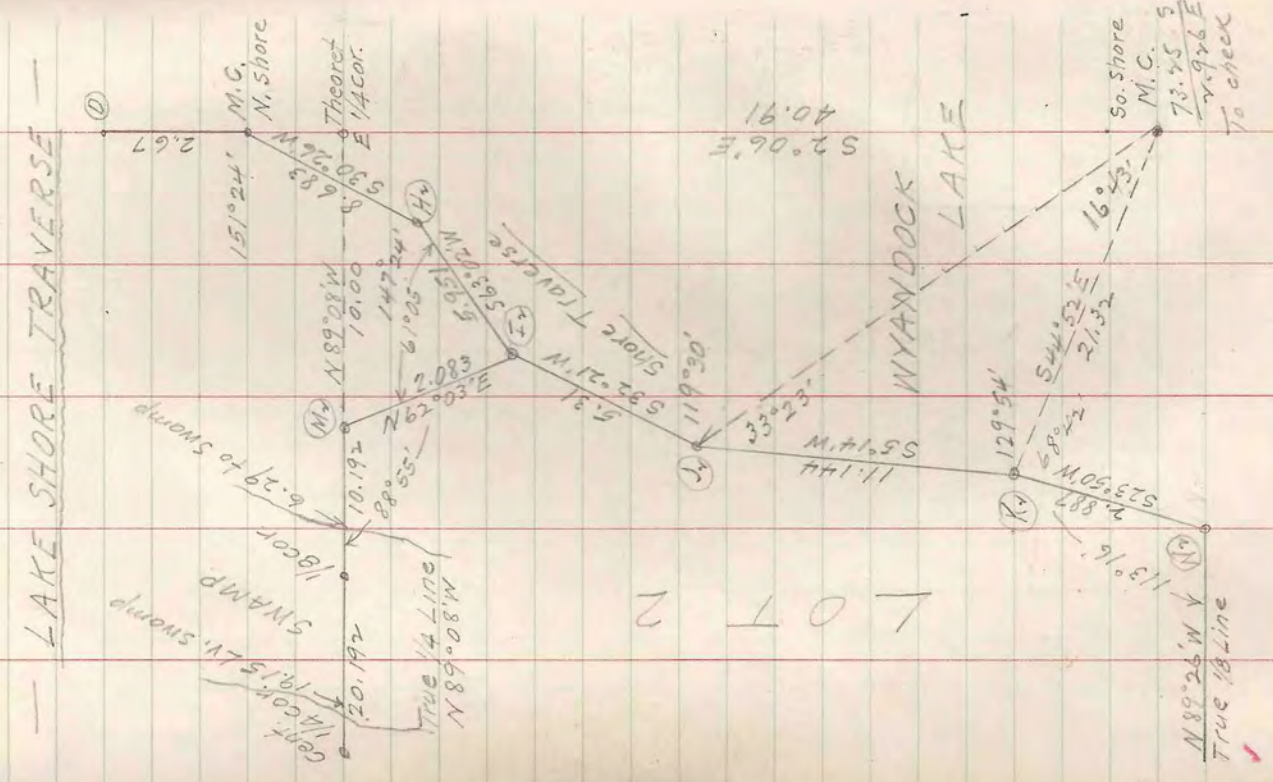
- COORDINATES -

	NORTH	SOUTH	EAST	WEST
NE. Cor	0	0	0	0
N 1/8 E line		20.329	.922	
No. M.C. "		32.372	1.445	
So. M.C. "		73.257	2.944	
SE. Sec. Cor.		81.252	3.626	
E 1/8 So. Line		81.148		16.519
So. 1/4 Cor.		81.065		36.649
M.C. So. Line		80.912		74.047
W 1/4 Cor.		39.383		80.075
E 1/4 Cor. in lake		40.626	1.813	
N.W. Sec. Cor.	1.49			80.930
N 1/4 Cor.	.745			40.465
Cent 1/4 Cor.		40.016		38.566
So 1/8 on 1/4 Line		60.540		37.607

- TRUE LINES -

North Line	N88°57'W	40.467	80.934
NE. Cor. to 1/8 S	S2°36'E	20.350	
1/8 S to No. M.C.	S2°29'E	12.056	
No. M.C. to E 1/4	S2°33'E	8.262	
South Line	N89°44'W	40.280	
N-S 1/4 Line	N2°40'W	20.547	41.094
E-W 1/4 Line	N89°08'W	20.192	40.384
			81.90
			81.90

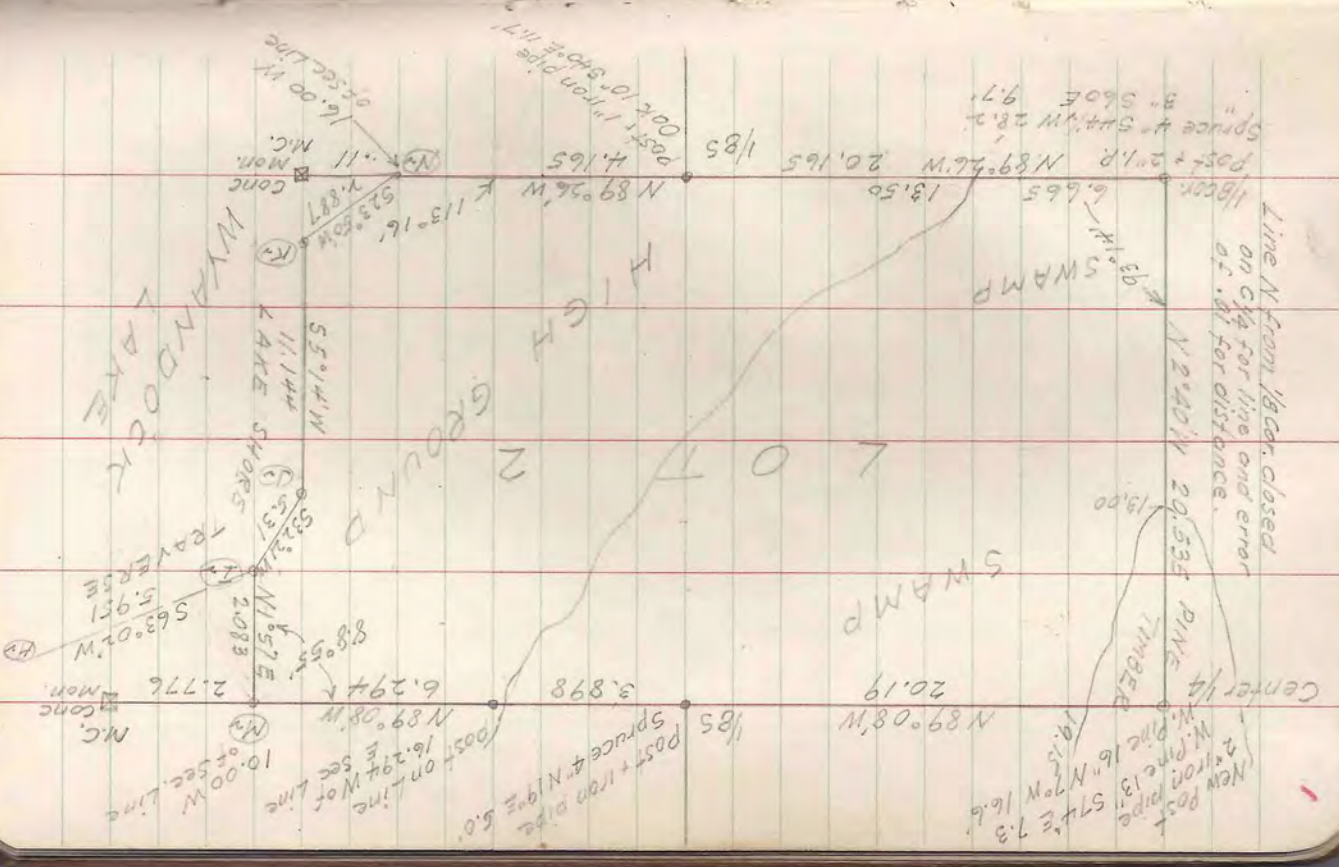
214		40.6265	1.813 E
N 89° 08' N	10.00	1.51 N	9.999 N
M ₂		40.4755	8.186 N
E ₂		42.5575	8.257 N
N 1° 57' E	2.083	2.082 N	.071 E
M ₂		40.4755	8.186
S 1/8 on E line		60.9395	2.719 E
N 89° 26' N	-16.00	1.58 N	15.999 N
N ₂		60.7815	13.280 N
E ₂		58.1405	12.114 N
		2.641	1.166
		1.166 = ton	S 23° 50' N
		2.641	Dist 2.887



CORNERS

NW Sec. Cor. - Found old post and iron pipe
 both origl. B.T. dk. Set new post and marked
 W. Pine 12" N 26° W 65.6'
 N. Pine 10" N 14° E 63.6'
 NE Sec. Cor. Post and iron pipe in fence corner
 NE Orgl. tree, now dry stub marks plain
 SE Sec. Cor. Post and B.T.
 N 1/4 Cor. Found nothing. Set new Oak Post and iron pipe
 W. Pine 16" S 63° W 69.4'
 N. Pine 34" S 46° E 70.5'
 S 1/4 Cor. Post and iron pipe. No B.T.
 W 1/4 Cor. Post and X Pine B.T. by Burnett
 N 1/8 on E Line Post and iron pipe by Hall
 No M.C. on E Line. Set new post from Hall's B.T.s.
 E 1/8 on So. Line - iron pipe. O.K. line & dist. No B.T.
 E 1/8 on No. Line - Set new post and marked
 Y Pine 10" N 75° W - 19.6' X Pine S 75° E 27.7'
 Cent. 1/4 Cor. - Set new post and 2" iron pipe
 W. Pine 13" S 74° E 7.3' W. Pine 16" N 7° W 16.6'
 1/8 So. of Center - Set post and 2" iron pipe
 Spruce 4" S 44 1/2° W 28.2' Spruce 3" S 60° E 9.7'
 1/8 E. of Center - Set post and 1" iron pipe
 Spruce 4" N 19° E 5.0'
 1/8 on So. Line of Lot 2 - Set Oak Post and 1" iron pipe
 Oak 10" S 40° E 11.7'

(next page)



CORNERS (CONT'D)

M.C. between Lots 1 and 2

Set 6"x6" concrete Mon.

B.T. Y. Pine 8" S 52° W 7.4'

Y. Pine 9" N 50° W 9.6'

M.C. between Lots 2 and 3

Set 6"x6" concrete Mon.

B.T. Oak 8" N 50° W 34.5'

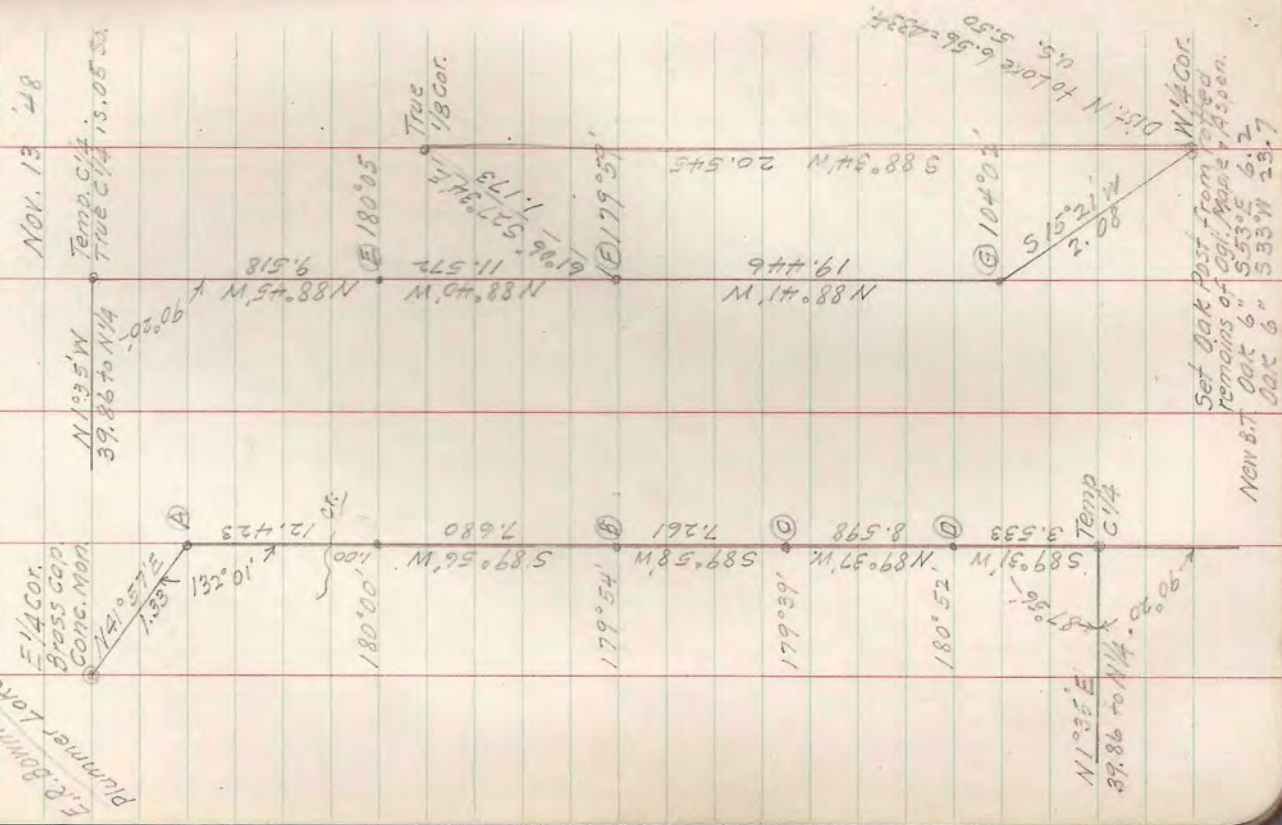
1/4 Line Post E edge of swamp

16.294 W of E Sec. Line

9.07 W of M.C.

~~John J. ...~~
1900
Nov. 12

T40N-R6E SEC. 8 LOT 2



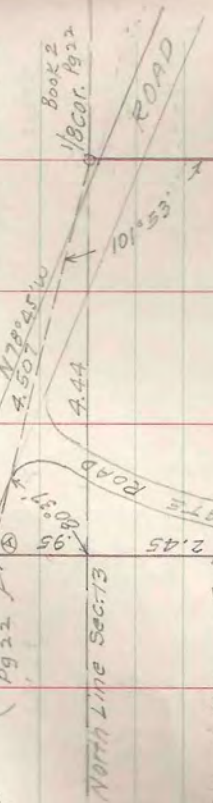
COORDINATES		North	South	West
E 1/4		0	0	0
C 1/4			1,010	40,377
N 1/4			2,042	81,451
1/8 W of Cent.			1,524	60,916
N 1/4		38,890		39,274
S 1/4			40,750	41,475
C 1/4 to N 1/4		N 1° 35' E	(2634.3)	39,913
C 1/4 "	S 1/4	S 1° 35' W		39,762
C 1/4 "	E 1/4	N 88° 34' E		40,390
C 1/4 "	W 1/4	S 88° 34' W		41,090

Nov. 26 '48
cedar Post and iron pipe
Set true Center 1/4 .05 south of temporary C 1/4
B.T. Oak 12" N 78° E 20.7'
Oak Pine 12" S 19° W 63.7'
Set 1/8 Cor. 20.545 West of Center. Oak Post + iron rod
B.T. Y. Pine S 86° E 40.3' Oak S 50° W 23.8'
Thence N 1° 35' E parallel with 1/4 line 5.36 to lake.
Set iron pipe B.T. Y. Pine 13" S 74° E 10.2'
Y. Pine 9" S 35° W 19.2'
At 9.091 = 600 ft. W of C 1/4 set iron pipe
Thence N 1° 35' E par. with 1/4 line to lake
No distance. Set plain stake.

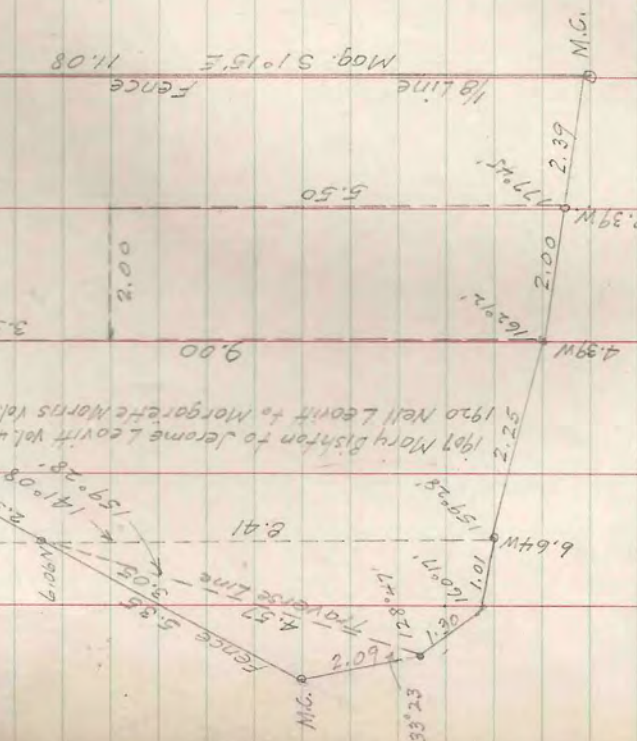
Book 6
page 57

T 39N-R5E SEC. 13 LOT 3

F.L. Cole 40E Oak St
Chicago Ill 11/5/48



Did not find
Vaughans
B.T. here
as taken from
his plot.
(See opposite page)



MERCER LAKE

11/20/48

Found A.H. Vaughans Y. Pine 10° N 31 1/2° E. 49 or 32'
Did not set NW cor. of original conveyance
Point falls nearly in line with existing fence
end N of post set in 1944 (Book II page 22)
near present gate.
Property as now fenced and staked is A.C.

T 38N-R 6E SEC. 26

Jan. 3, 49 Geo. Boehm

} Ass

Frank Baumgartner

Approx. N-S 1/4 Line

Set temporary point on ice in line between

M.C. on West shore Blue Lake and M.C. on

East shore (Book V Page 51) and south of

iron pipe at end of fence on North shore.

said to be M.C. on N-S 1/4 line Sec. 23

as set by Lackamore (?) No. 873

This temporary N 1/4 cor. was 9.70 ch east

of West M.C. and 4.50 ch W of East M.C.

Thence south Var. 2° E

30.00 South shore, Blue Lake, Set temp. stake

40.00 Set temporary stake

At 30.00 ch angle 90° to East

20.00 To R.R. track No stake

Geo. Boehm

T 39N - R 5E SEC 3

North 36 Rods of Lot 3, SW - SE

Ordered by Real Estate Dept

Chicago Title & Trust Co.

111 West Washington St. Chicago 2, Ill.

Jan. 2 '49

to Jan 8 '49

Stake marked 0.145 (Steffack?) No B.T.S

Center 1/4 cor. (D.H. Vaughan) 1914

(See Book VII page 49)

N-S 1/4 Line

1.25
1.285
41.28
20.03
20.64
41.28 N0.53'E
1/8 cor. Oak Post

1/8 cor. Oak Post

Vaughans O.B.T. 55°W 30.6'

New Oak 5° S 49° W 5.3

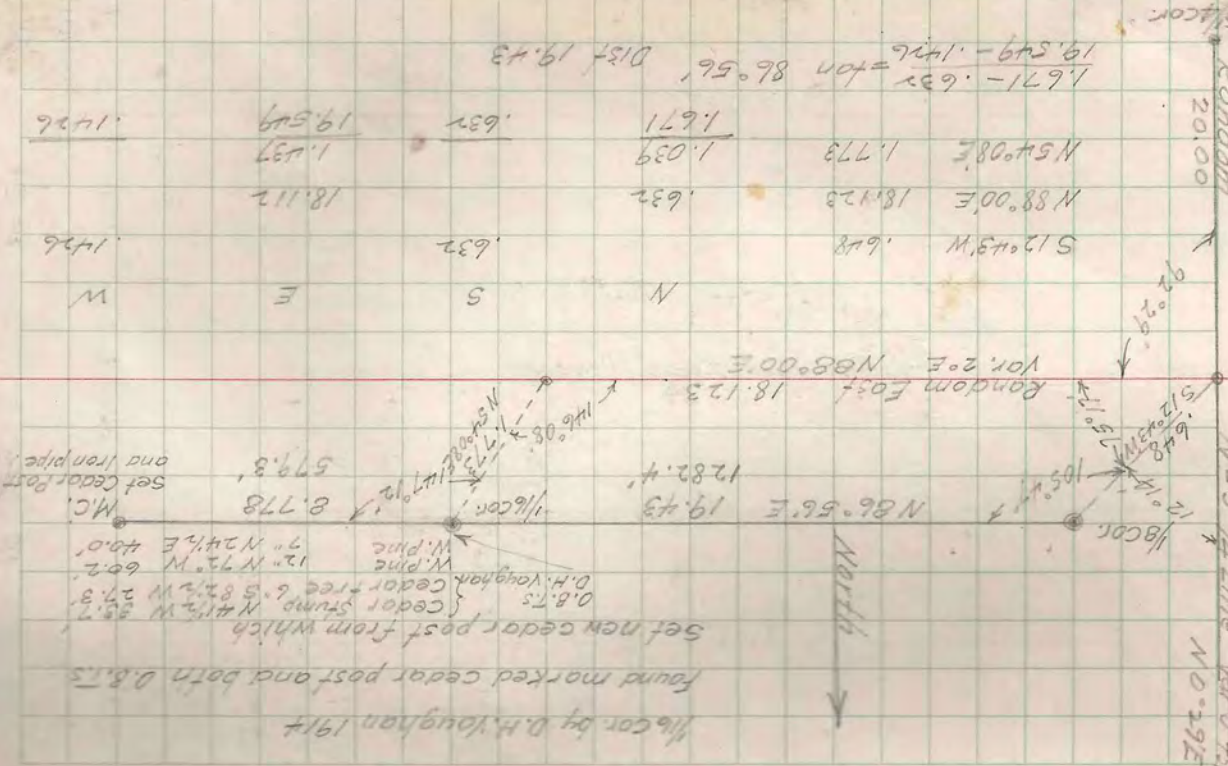
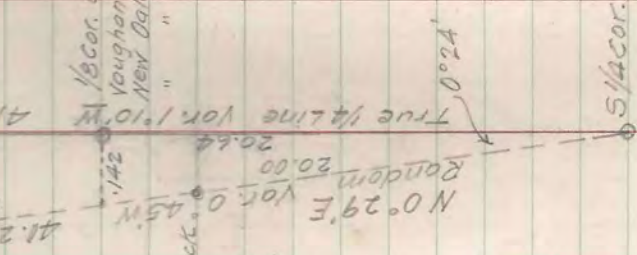
" " 6° N 30° E 10.4

Original stake by Steffack

See Book II Page 21

Found Vaughans O.B.T.

and re-set Oak Post.



1.671 - .632 = for 86.56' Dist 19.43

1.426

18.112

1.426

1.426

579.8

8.778

1282.4

19.43

18.123

1.773

1.039

1.671

.632

1.037

19.549

1.426

1.426

1.426

1.426

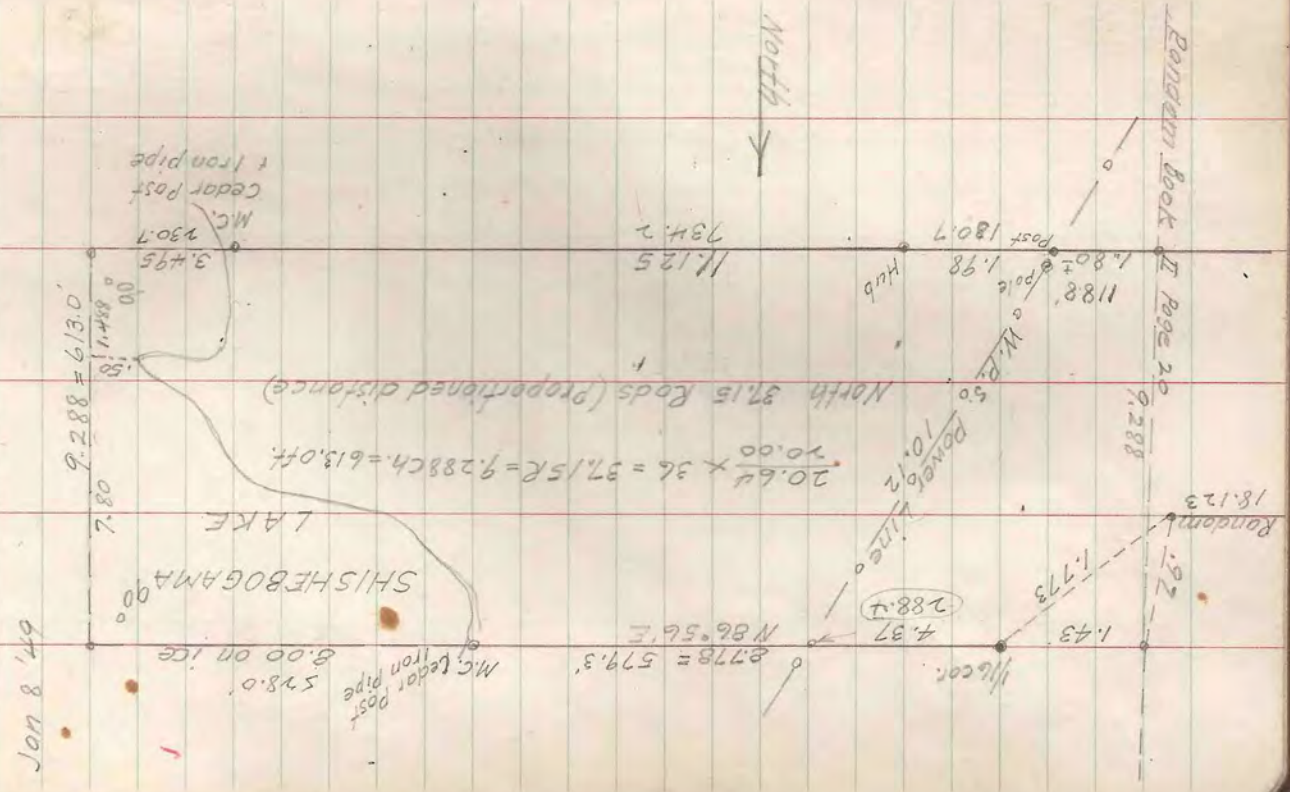
1.426

1.426

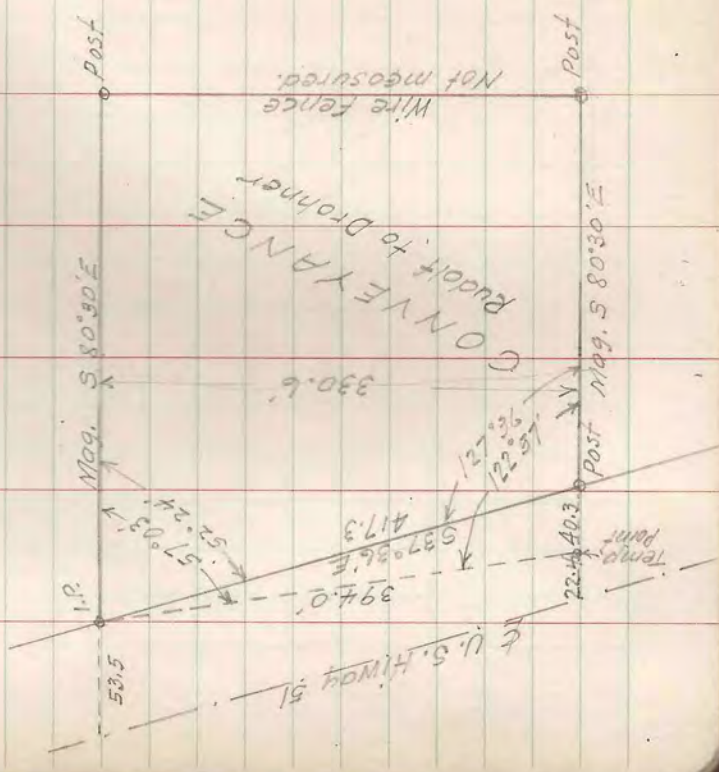
T 39N-R 5E SEC. 3

Sta.	Angle	Bearing	Dist.	F.S.
At 1/4 Cor. E of S 1/4 Cor.		South 7.4'		(See Book II - Page 20) Sta 24
Stadia Traverse				
A	-92°50'	S 87°0'W	1285.0	S 1/4 Cor.
B		S 81°55'W	180'	E Road
C		N 82°40'E	82'	Port of 1/8 Line
D		N 113°45'E	80'	Fork to Drills
E		N 167°35'E	105'	Power Line N 67°25'W
F		N 170°15'E	209'	(C)
G		N 170°15'E	70'	Kent-Munson Line
H		N 62°30'E	160'	(D)
I		S 68°00'E	130±	To Kent
J		N 64°30'E	100±	To Munson
K		N 121°30'W	80'	Bend to Chodnick's
L		N 116°45'	145"	"
M		N 117°15'	200'	"
N		N 120°30'	220'	(E)
O		N 156°40'E	210'	(E)
P		N 150°40'	75'	Power Line E-W
Q		N 104°40'	295'	(G) S line of N 26 Rds.
R		N 235°00'	245'	M.C. of Lot E
(E 374.98 N 160 W)				

T 39N-R 5E SEC. 3 LOT 3



Survey ordered by Forest W. Rodd, Atty. Gen. Rhinelander Wis. Mt. Dronner Client Jan. 10, 49 Points on N line and S line intersecting U.S. Hwy 51 were indicated by Mrs. Rudolf (Grantor) Woodruff Wis. S line of parcel being old wire fence N line to be parallel with S line Brushed both lines E to wire fence N.S. and set posts at extremities of both lines



ROAD TRAVERSE
 Road presumed to be true E-W 1/4 line S to A of E end of straight road. Mag. S 87°30' W
 A-A from S 87°30' W 185°48' 19.10 to "B"
 B " A 176°31' 5.485 " C
 C " B 180°07' 6.53 " D
 D " C 160°04' 13.12 " E
 E " D 283°39' 12.7 " P.O.B.
 P.O.B. from W.A. Hennig's survey of Aug. 3 1947
 R.R. spike in Black Top in Hwy 51
 S.T. Oak 3" S 77°W 24.1 ft
 Cherry 3" S 46°W 32.0 "
 At P.O.B. from E 93°55' 219.5 ft Grave Pit
 " P.O.B. " E 178°10' 6.280 " F
 " F " P.O.B. 163°32' 12.47 " G
 " G " F 88°55' .88 H (Stoneware)
 " H " G 214°57' to N line of Conveyance Rudolf to Dronner (P.O.B.)
 At R.R. Spike P.O.B. from E 183°55' 16.18 along E of Old Hwy 51 to intersection of N line of Conveyance. Continuing S 2°26'E a distance of 5.60 to fence line West claimed to be on true 1/8 line From point S 2°26'E 16.18 thence S 80°47'E a dist. of 6.29 to I.P. on E side New Hwy 51 and P.O.B. of conveyance

TAON-R6E SEC. 14		ROAD TRAVERSE (cont'd)	
		N	S E
A-B	S 86° 42' E	19.10	1.099 19.068
B-C	N 89° 49' E	5.485	.017 5.485
C-D	N 89° 56' E	6.53	.007 6.530
D-E	N 70° 00' E	13.12	4.487 12.329
E-P.O.B.	S 6° 21' E	1.27	1.262 .140
P.O.B-I.P.	N 87° 34' E	219.5ft	to I.P. at edge of Gravel Pit.
P.O.B-F	S 8° 11' E	6.28	6.216 .894
F-G	S 24° 39' E	12.47	11.334 5.201
G-I.P.	N 64° 16' E	.88	.382 .793
	S 80° 47' E	N Line of Conveyance. No dist.	

4.893 19.911 50.440

N.W. Cor. of Gravel Pit (6' dia) is 1.92 N of E of road extended.

COORDINATES

1/8 Cor. (3) on E-W 1/4 Line (3) RR Spite in Black Top Hwy. 51 taken as initial point A. Oak 3° S 77° W 241 ft

Sta H	S 2° 26' E	16.18	16.165 S .69 E
I.P. conveyance	S 80° 47' E	6.29	17.17 S 6.90 E

Cherry 3° S 46° W 32.0'

T42N-R5E SEC. 1 Lots 1 & 2

Haskins Resort Survey for Donald Welsh Woodcut
 Jan 18, 49 Township Corner Brass capped iron pipe
 set by W.S. Conserv. Dept. about 1926 No. 873

Random South	Var. 3° 30' E
11.46 Sta 'A'	53° 30' E
'A' 'A'	192° 51'
True Line	1.17 Vert. 29° 56'
Lake and Road Traverse	59° 21' W To M.C. Brass Cap Iron Pipe
At M.C.	1.015
B	42.755 588° 16' W Sta. B on ice
C	9.145 N 26° 31' W . C
D	6.420 N 42° 59' W . D
E	12.203 N 44° 04' W . E
F	16.641 S 56° 44' W . F
	M.W. Cor. Brass Cap 1.12
	6.775 S 84° 20' W

COORDINATES

	North	South	East	West
M.E. Twp. Cor.	0	0	0	0
A	11.440	0	.700	0
M.C.	12.436	0	.535	0
B	13.726	0	0	42.200
C	5.543	0	0	46.283
D	.843	0	0	50.653
E	7.927	0	0	59.143
F	1.200	0	0	73.056
N.E. Cor. Sec. 1	1.869	0	0	79.796

19695
 79.796 W = tan 588° 46' W True N line of Sec. 1
 79.82 Distance

To set N 1/4 Corner

Coord. N 1/4 1.869 = .934 South

79.796 = 39.898 West

Mid-distance 39.91

Coord. Sta. D .843 S 50.653 W

" N 1/4 .934 S 39.898 W

Diff. .091 10.755

.091 S = 589° 31' E Dist 10.76

Angle of Sta. D from 'E' 134° 33' to 589° 31' E

Distance 10.76 to N 1/4 Cor.

Set Cedar Post. Witness: - Cor. 8° N 5° E 16.0'

To set M.C. on N-S 1/4 Line

At 'B' from 'C' 64° 00' Dist 4.16 to M.C. in line

between N 1/4 and 1/4 cor. on S line of Sec. over lake.

Set Cedar post for M.C. Dist. S from N 1/4 - 9.50

1/8 Line between Govt Lots 1 & 2

From 'B' N 88° 16' E on line to M.C. on E line 22.68 on ice

Thence from 'B' 89° 50' to N 1° 54' W being a mean between

true E line N 2° 28' W and true 1/4 line N 1° 20' W

4.86 to M.C. Set Cedar Post. B.T. W. Birch 14" N 5° W 80.4'

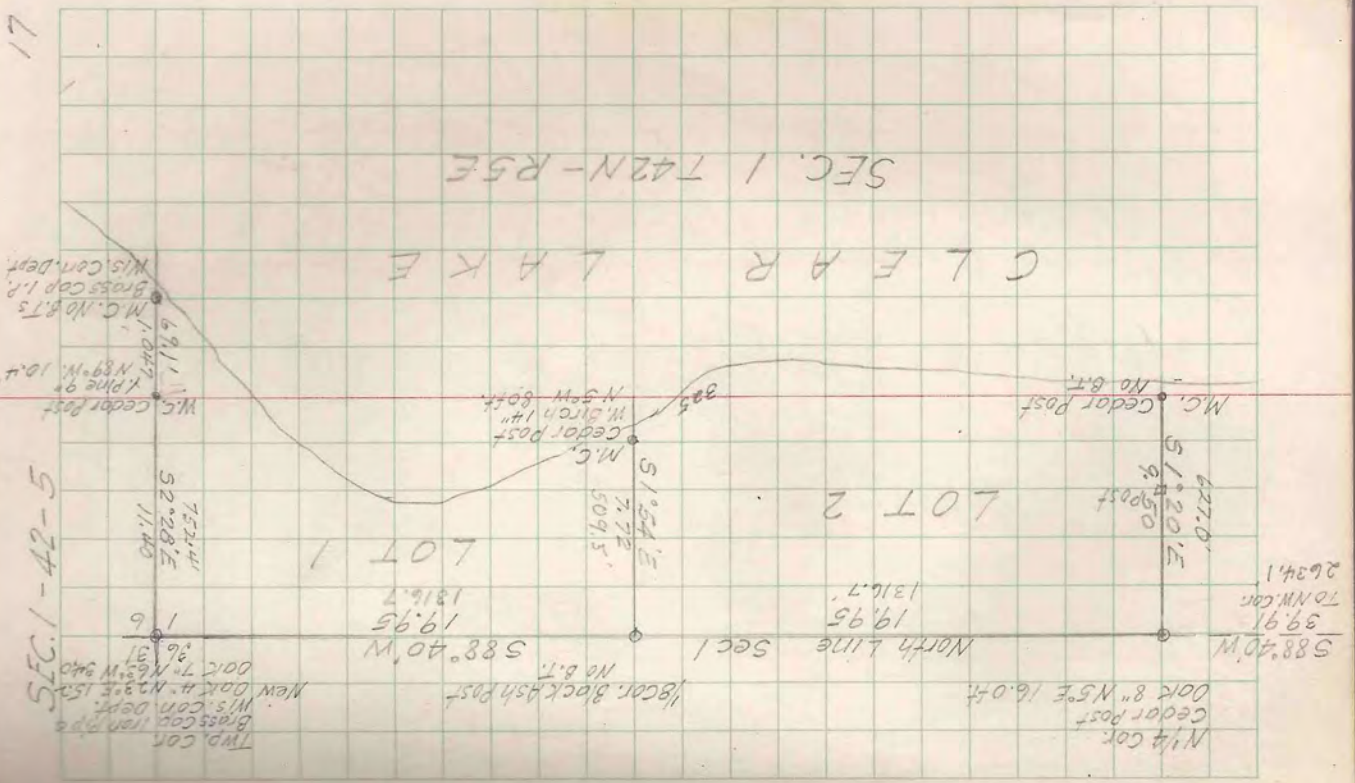
12.58 to 1/8 Cor. Set Black Ash Post No. 8.T.

At 1/8 cor. 90° 34' to 588° 46' W on true line 19.95 to N 1/4

N 88° 46' E " " 19.95 to Town Cor.

SEC. 1 T42N-R5E

CLEAR LAKE



SEC. 1 - 42 - 5

588'40"W
39.91
70 NW COR
2634.1

Twp. Con.
Brass. Con. 1889
W.S. Con. Dept.
New Oak H. N. 3. E. 15.3
Dak. 7. N. 6. 5. W. 340
Dak. 7. N. 6. 5. W. 340
36
31
1
6
757'41"
52'28"E
11.40
W.C. Cedar Post
K Pine 9
N 89 W. 10.4
1.047
M.C. No. 8.T.
Brass. Con. I.R.
W.S. Con. Dept.

1/8 COR. Black Ash Post
No. B.T.
588'40'W
19.95
1316.7

M.C.
509.5'
7'28"E
Cedar Post
M. 510 N 14"
N. 59 W 80 ft.

North Line
Sec 1
19.95
1316.7

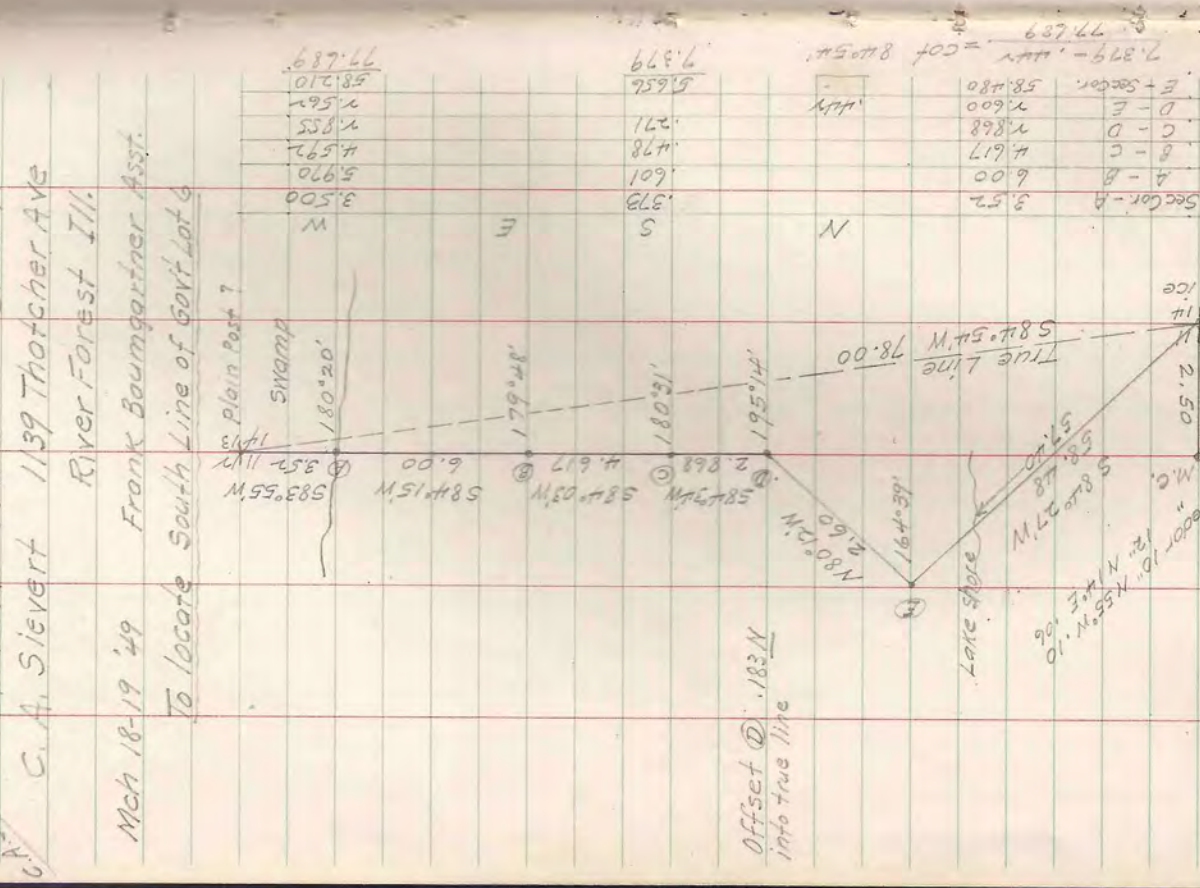
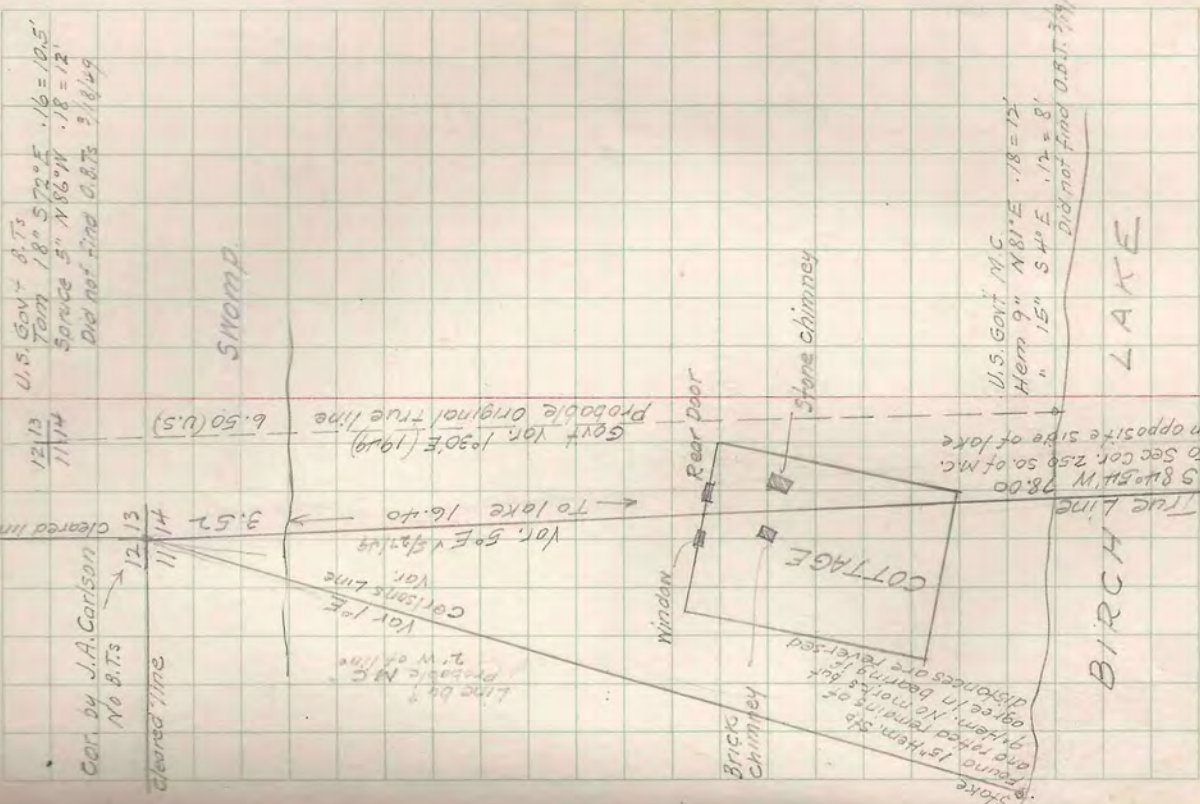
M.C. Cedar Post
No. 6.T.
677.0'
51'20'E
9.450 Post

LOT 1

LOT 2

SEC. 1 T42N-R5E

CLEAR LAKE



5
 T 43 N - R 0 E SEC. 11
 C. A. Sievert 1139 Thatcher Ave
 River Forest Ill.
 Mch 18-19 '49 Frank Baumgartner Asst.
 To locate South Line of Govt Lot 6

3.500	3.52	Sec Cor - A
5.970	6.00	A - B
4.592	4.617	B - C
7.855	7.868	C - D
7.562	7.600	D - E
58.210	58.480	E + Sec Cor.
77.689	77.789	Wly

3.500	3.52	Sec Cor - A
5.970	6.01	A - B
4.592	4.78	B - C
7.855	7.979	C - D

3.52	180° 20'
3.57	179° 14'
6.00	180° 31'
4.617	180° 14'
5.970	180° 03'
7.855	180° 27'
77.689	180° 21'

Offset @ .183 N
 into true line

10 V South
 2.50
 M.C.
 12.1 N N 45° N .10
 12.1 N N 45° E .10
 58.480 27' W
 57.20
 58.480 27' W
 165° 49'

7.379 - 1.111 = 8.454
 77.689

Plain Post 7
 Swamp
 180° 20'

Lake shore

U.S. Govt M.C.
 Hem 9" N 81° E .18 = 12'
 " 15" S 4° E .17 = 8'
 Did not find O.B.T. 3/18/49

Govt Var. 1° 30' E (1949)
 Probable original true line
 6.50 (U.S.)
 U.S. Govt 8.73
 Tom 18° S 72° E .16 = 10.5'
 Spruce 5" N 86° W .18 = 12'
 Did not find O.B.T. 3/18/49

Line by M.C.
 present 2' W of line
 Var 1° E
 Corisons line
 Var.
 Var. 5° E x 4 1/2 ft
 To lake 16.40
 3.57
 12.13
 11
 11/14
 12/13
 cleared line
 cleared line
 Cor. by J.A. Carlson
 No B.T.s

SWAMP

BIRCH LAKE

COTTAGE

Rear Door

Stone chimney
 Bricks chimney
 Window

To Sec Cor. 250' 50' of M.C.
 S 84° 54' W 78.00
 True Line
 on opposite side of lake

Stone
 found 15 hem. Sta
 and raked remains of
 system. No marks but
 agree in bearing. It
 appears to be
 reversed

T 39N - R 6E SEC. 11 LOT 5

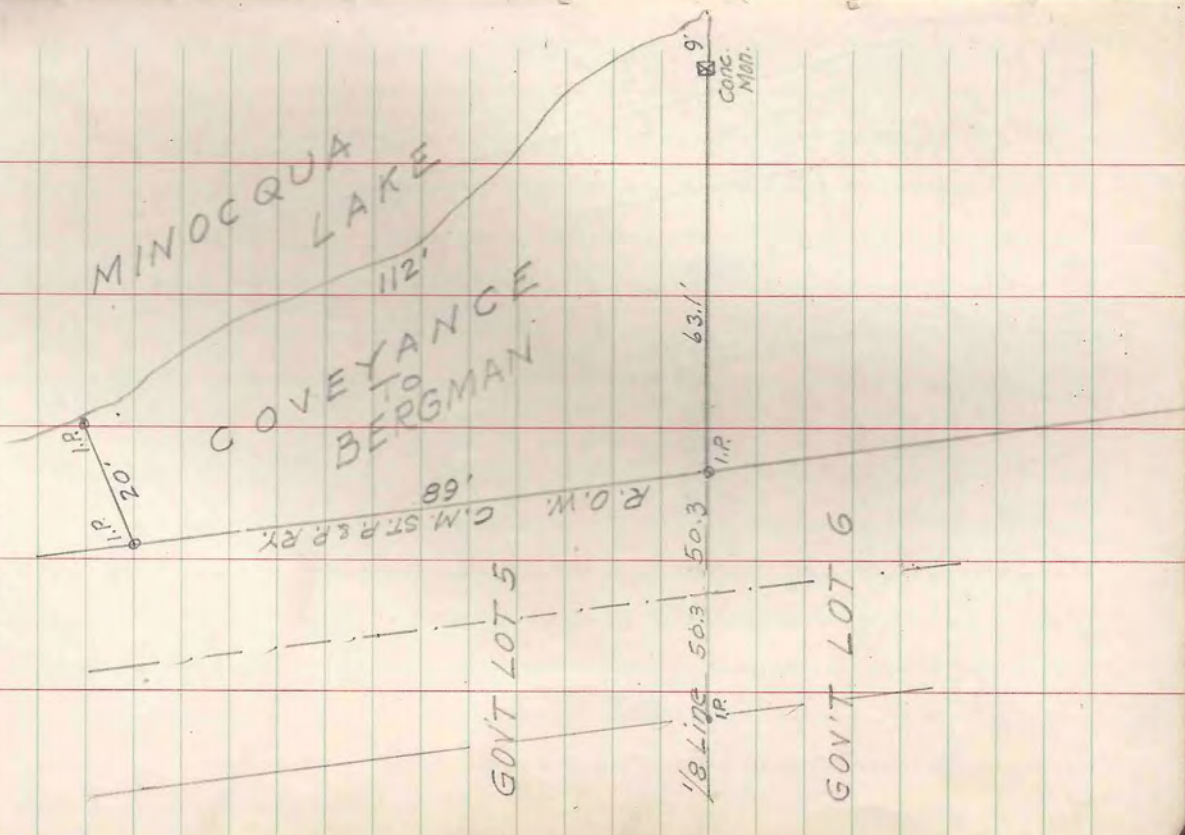
E. Melong Asst.

April 25 '49

Description to E. W. Hunter Atty.

MINOCQUA LAKE

COVEYANCE TO BERGMAN



GOV'T LOT 5

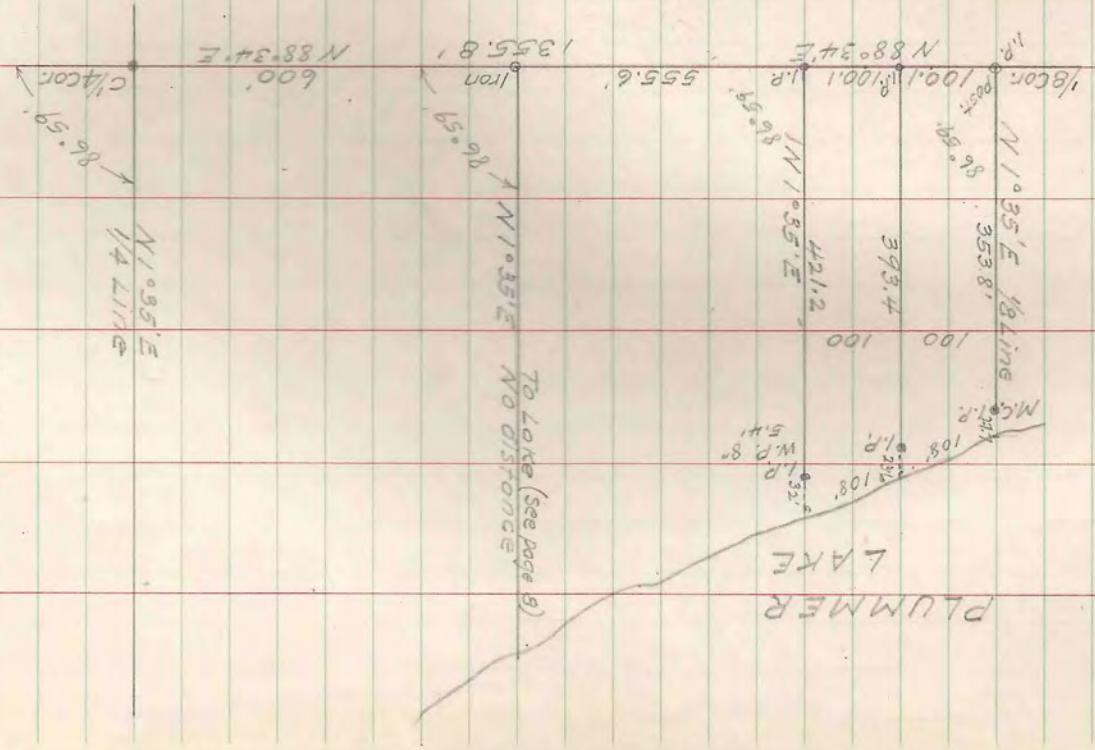
1/8 Line

GOV'T LOT 6

T 40N-R6E SEC 8 LOT 2

April 25, '49 E.R. Bowman Asst.

(See also page 8)

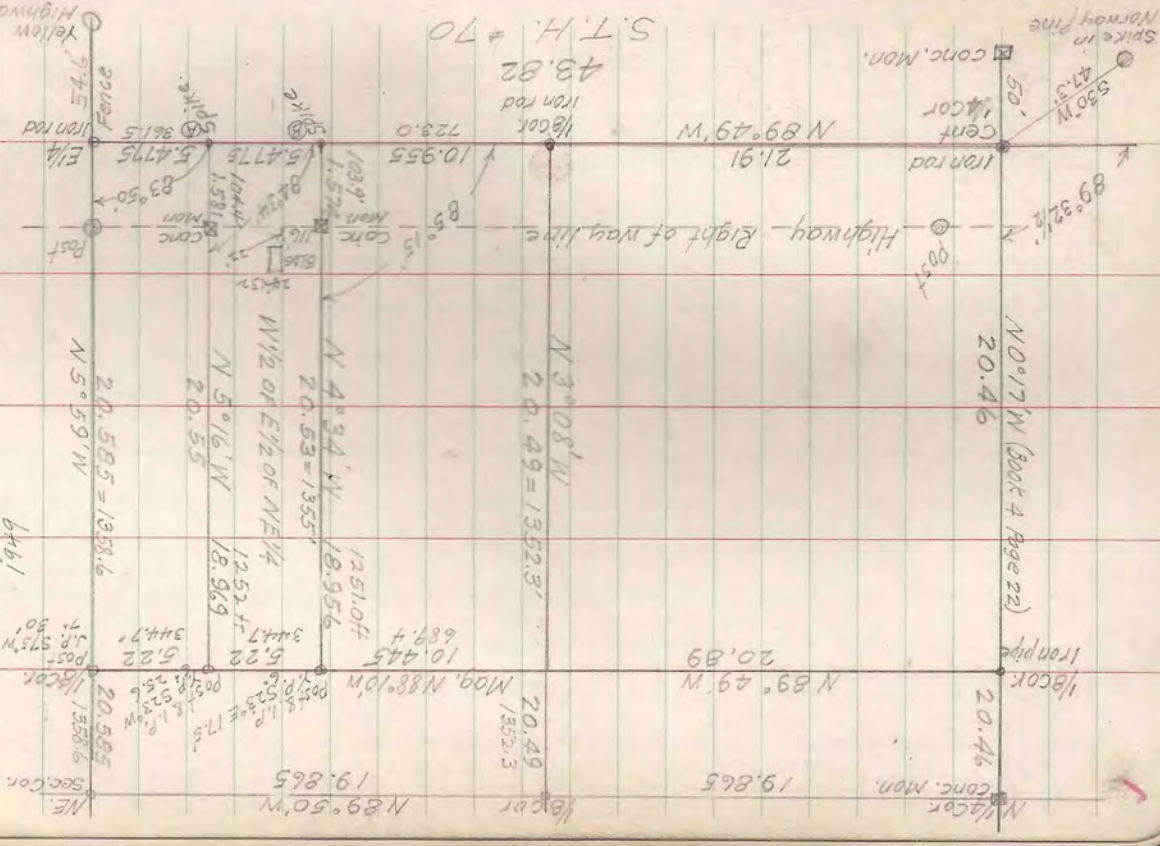


T 39N-R6E SEC 9

TRaverse	Angle	Distance	True Lines
E 1/4 - A	N 89° 49' W	5.4775	43.82
A - B	N 89° 49' W	5.4775	41.17
B - C	N 5° 09' W	2.5418	39.73
C - D	N 4° 11' W	10.4942	41.78
D - E	N 20° 56' N	8.573	
E - F	N 34° 37' E	7.247	
F - G	N 48° 18' E	8.654	
G - NE Cor	N 1° 00' E	8.1860	
NE Cor - 1/4	?	?	
- COORDINATES -			
E 1/4	0	0	
A	0.175	N	5.4775 W
B	0.350	N	10.9550 W
E	2.14000	N	15.0107 W
NE Cor	40.9456	N	4.2896 W
N 1/8 E 1/4	20.4728	N	2.1448 W
N 1/8 1/4 1/16	20.600	N	43.9208 W
1/4	1402	N	43.8197 W
1/4			
- TRUE LINES -			
E 1/4 - 1/4	N 89° 49' W		43.82
E 1/4 - NE Cor	N 5° 09' W		41.17
NE Cor - N 1/4	N 89° 50' W		39.73
E - W 1/8 1/4	N 89° 37' W		41.78

T 39N-R6E SEC 9

To locate W 1/2 of E 1/2 of SE-NE
L.G. Goertz Ass't.
April 26, May 31, 4
6461

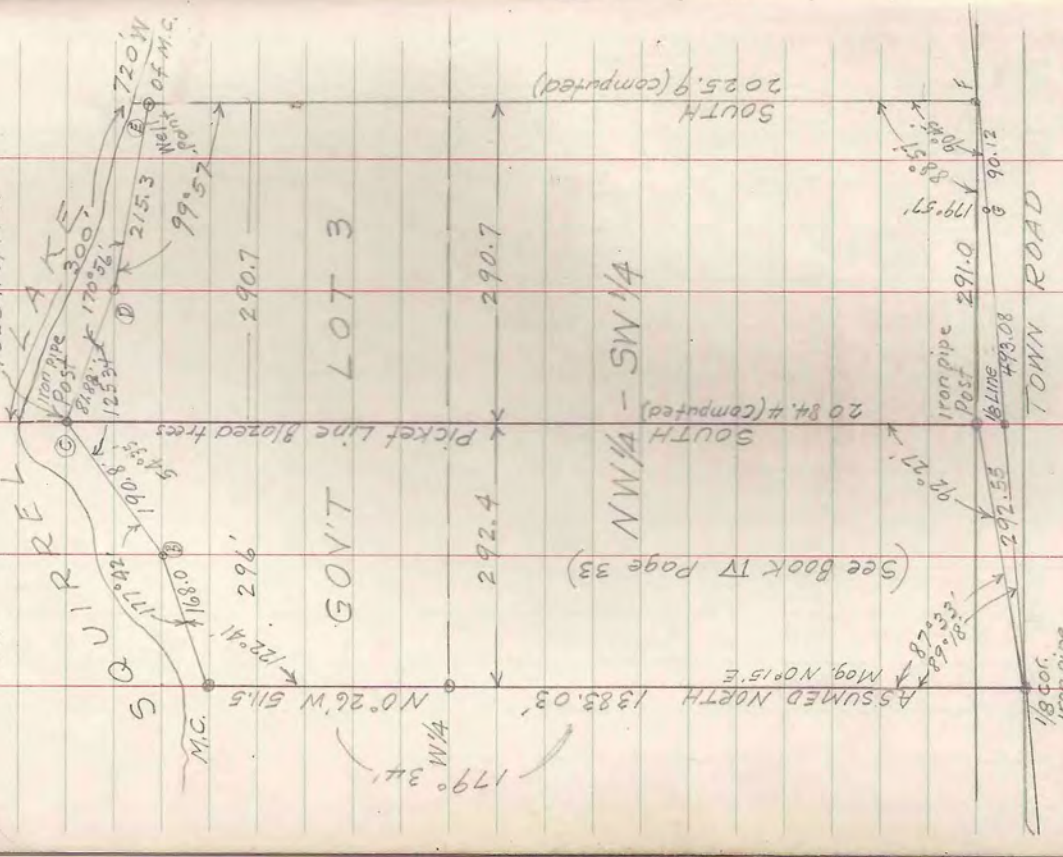


S.T.H. # 70
43.82
Iron rod

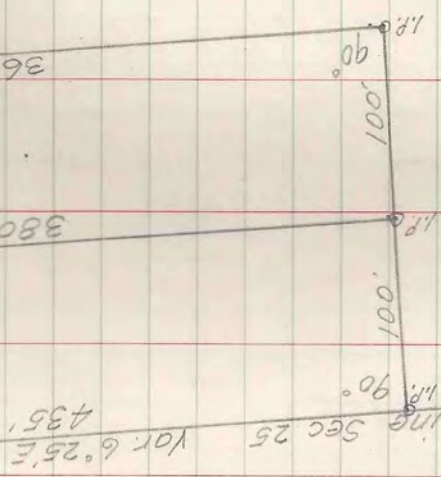
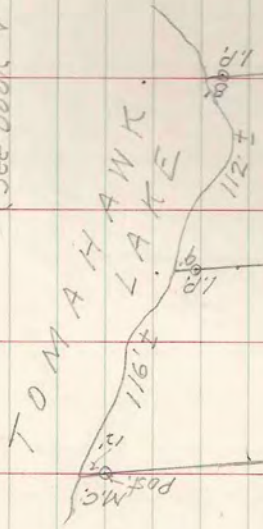
Spike in Norway pine
530' W
47.5'
50'
Cent
14 Cor
Conc. Mon.

For L. E. Abbott
Chico, Ill.
April 26, May 31, 4
6461

T 39 N - R 5 E SEC. 20
 April 28, 1949
 29,
 L.G. Goertz Asst.
 1020' N of M.C.



T 39 N - R 6 E SEC 25 LOT 4
 May 7, 1949 H.M. Clippel Asst.
 (See Book 7 Page 64)



H.M. Clippel

T 39N-R5E SEC 22

L.G. Goantz Asst.

May 9-10 '49

Post by H.C. Hall 21 22 19.70
 Temp 1/8 19.70
 1/4 cor. From L.G. Goantz notes

12.13 Spring Creek
 Temp 1/8 Cor. 20.00
 N of New Road in Jack Pines

1/8 cor. Did not connect
 Post by Hall

Line Blazes 19.70

Orig. 1/4 Cor. Did not connect
 Post by Hall
 Temp 1/4 Cor. Point falls 40.00
 S side new road.

Var. 2° E 19.93

1/8 cor. Did not connect
 Post & Bl. 8.75
 By ?
 Temp 1/8 cor. Near S end of open swamp. 60.00
 On high ground. marked a peeper.

John D. Leary

T 39N-R 5E SEC. 13 LOT 9

May 12, 1949

L.G. Goertz ASST.

Spikes in
N.P. 1" 5386 12.6
N.P. 14" N100E

Conc. Mon. South Line Glen Fell Plot W.P.

109.2

30'

88° 18'

Sec. 13
Line 150'

HARRIS

91° 42'

Spikes in
W.P. 12" N50°E 12.3
W.P. 8" S19°E 12.3

I.P.

96.9

67'

Spikes in
W.P. 10" N60°W 11.8
W.P. 8" I.P.

12.9'
11.8'

West
50'

G. HUBER

89° 32'

Conc. Mon.

74.4'

M.G. 11'

1/4 Line

Spruce 14" N8°W 27.4
spike-W.P. 12" N85°W 16.1

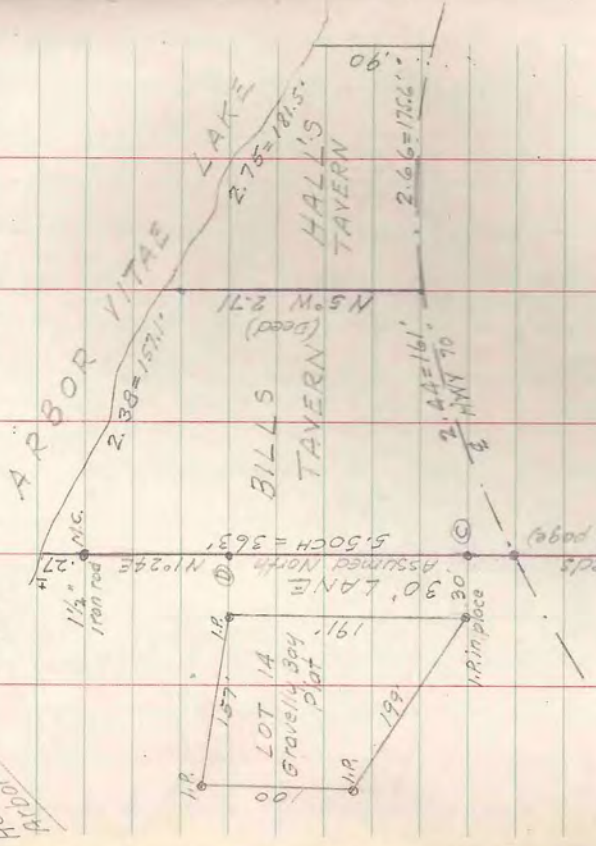
MERCER LAKE
153.7'

64.7'

Harris & Huber

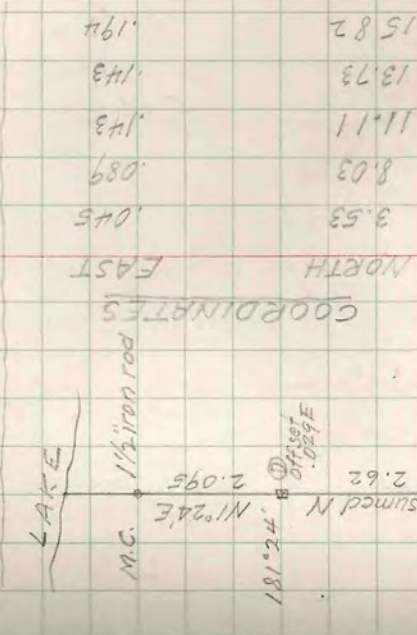
T40 N-R 7E SEC 29 LOTS

May 26 1949 L.G. Goertz Ass't.



1/8 line as referred to in deeds
 Did fence line (see opposite page)

TRAVERSE OF 1/8 LINE FENCE



COORDINATES

Point	Bearing	Distance	Offset
A	N 0°44' E	3.53	0.45
B	N 0°34' E	4.50	0.44
C	N 1°00' E	3.08	0.54
D	N 1°24' E	2.09	0.51
M.C.	N 1°24' E	2.09	0.51
Sum		15.82	1.94

Set A B 0.115 = .76 ft E to true line.
 Set D C .004 = 0.26 ft W to true line.
 Set D D .029 = 1.9 ft E .

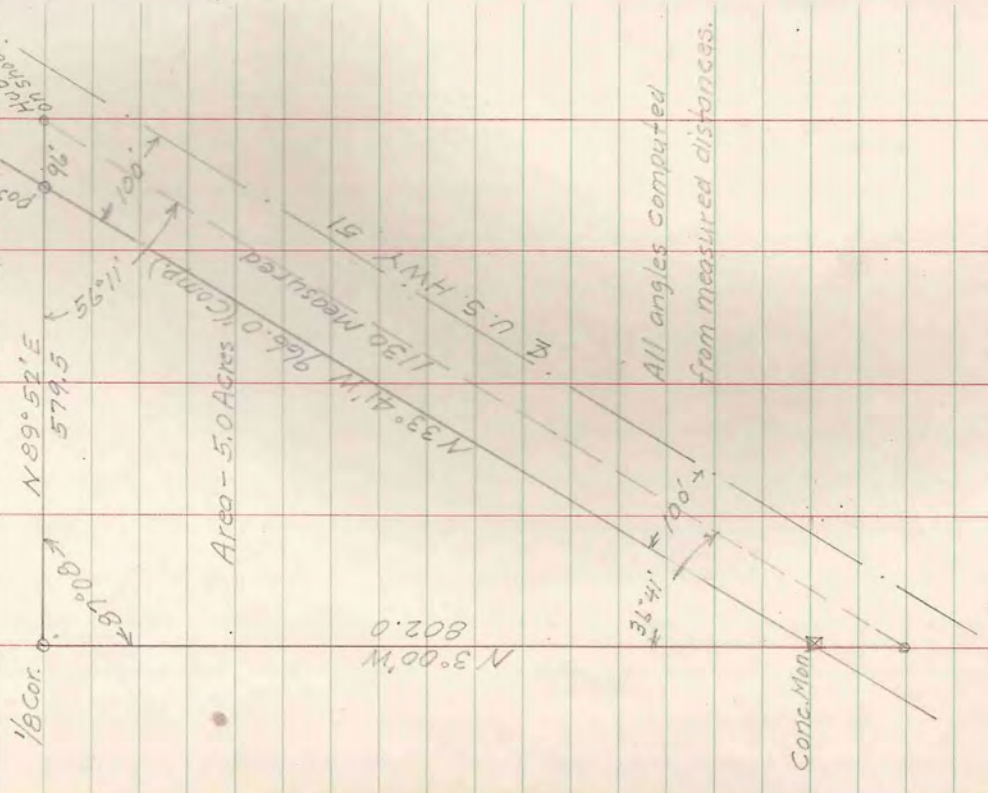
15818 = from N 0°43' E - 15.82

T 39N-R6E SEC 34

Part of SE - NE West of HWY 51

June 1 '49 Dan. Hermann Asst.

Osborn Prop.



All angles computed from measured distances.

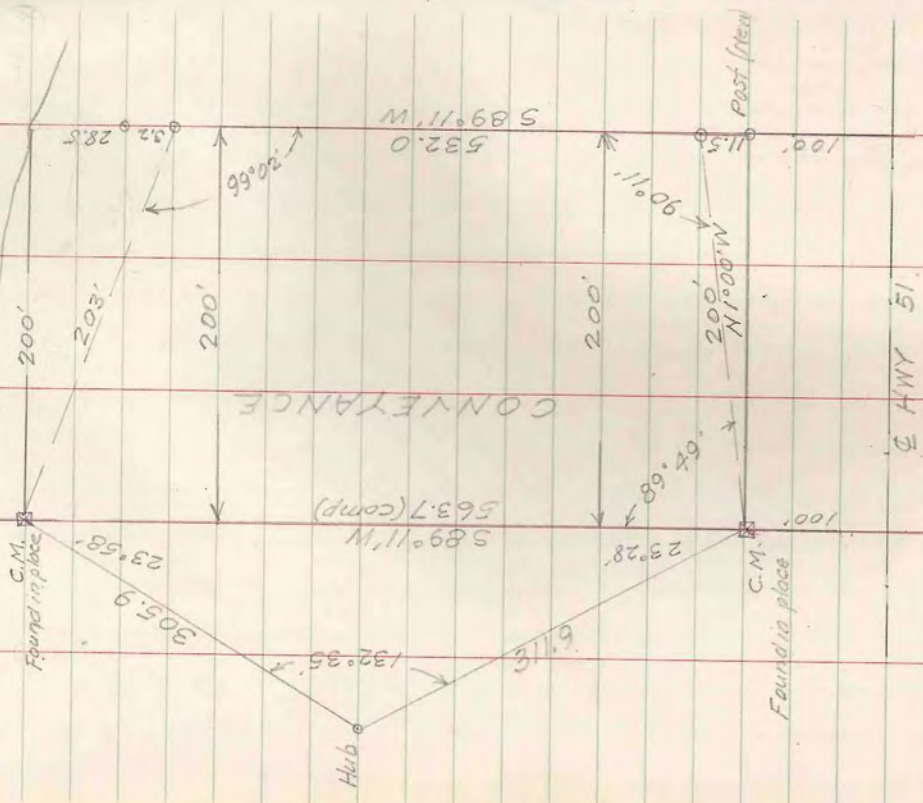
102N0301512

T40N-R6E SEC. 2 LOT 5

6(?)

Little Spider Lake

Joe Lott's

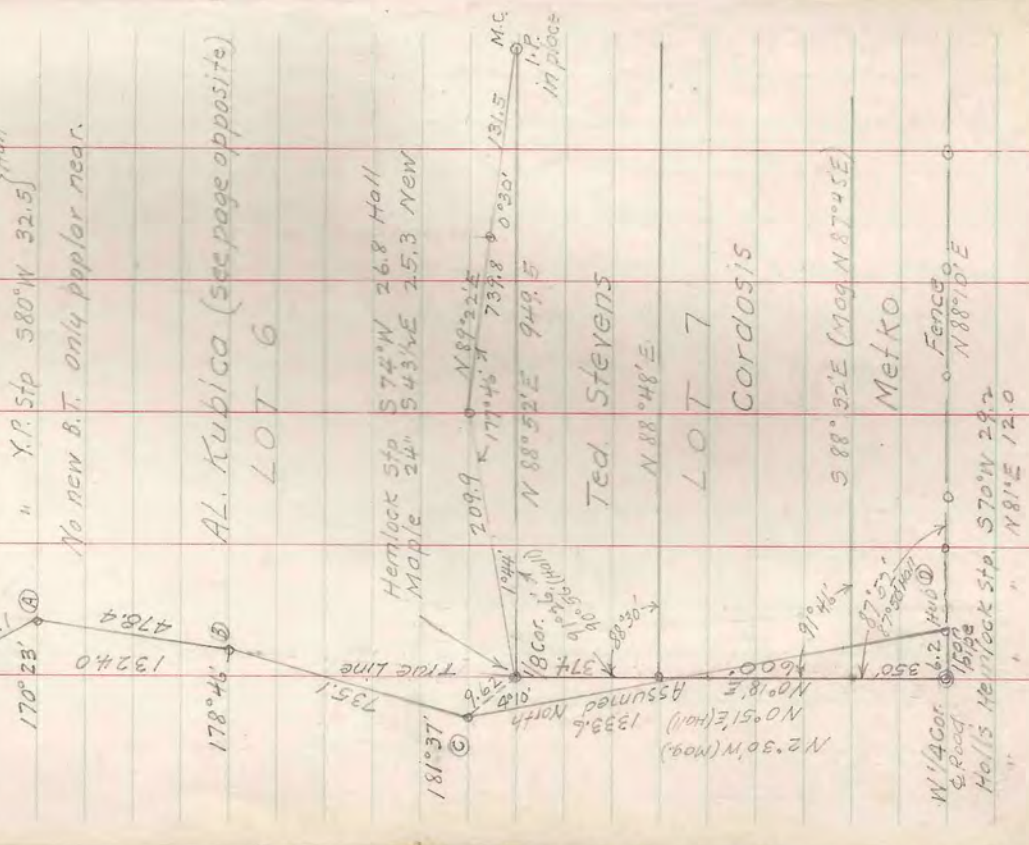


E HWY 51

T 39 N - R 4 E SEC. 9

June 14, '49
12
Don Hermann A.S.T.

Holl's Post
v B.T.S
Set 1 1/2" iron pipe at Holl's Post
Rotted X.P. Stp. 570°E 177'
" X.P. Stp 580°W 32.5'
No new B.T. only poplar near.



AL. Kubica (see page opposite)

LOT 6

Hemlock Stp 574°W 26.8
Maple 24 543°E 15.3 New

Ted Stevens

N 88°48'E

LOT 7

CORDOSIS

588°32'E (Mag N 87°45'E)

Metko

Fence
N 88°10'E

Holl's Hemlock Stp 570°N 29.2
" N 81°E 12.0

To check Holl's section line and re-set his
North 1/8 Cor on West line.
Re-set N 1/4 Cor iron pipe in center of road in line
with fence east to Squaw Lake from which Holl's B.T.S
Hemlock Stp 570°W 29.2
" " N 81°E 12.0

	N	E	W
Thence East	6.2	6.70	
" North	1333.6		
" N 1°37'E	735.1	70.73	
" N 0°23'E	478.4	3.20	
" N 9°14'N	102.1		16.38
	2647.6	30.13	16.38

30.13-16.38 = tan. 0°18'
2647.6 True Line N 0°18'E

To set 1/8 Cor
At Stp C, angle from South on D 4°10'
To 54°10'E Dist 9.62'

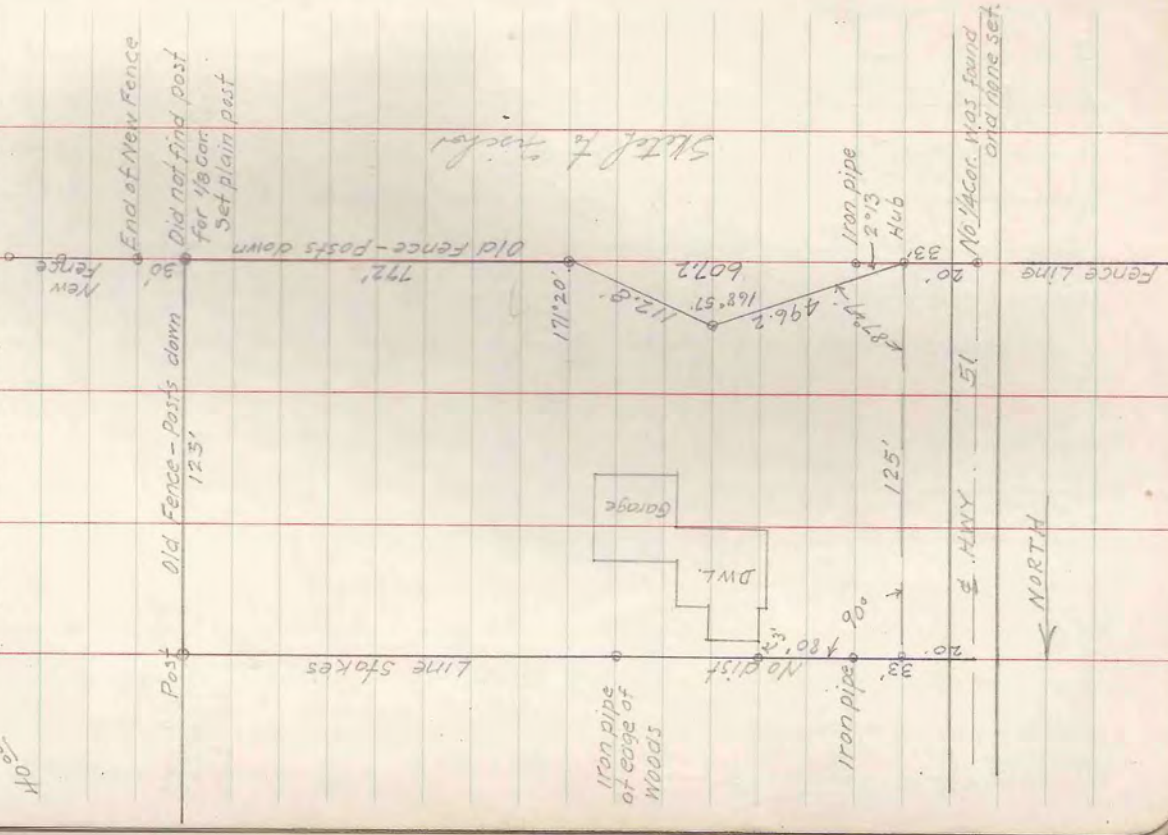


T 40 N - R 6 E SEC. 24

June 21, 49 Don Hermann Asst

To parcel So. 125' of SW 1/4 - NW 1/4

Donnerstag
Laripfe Natter
Niles
40°



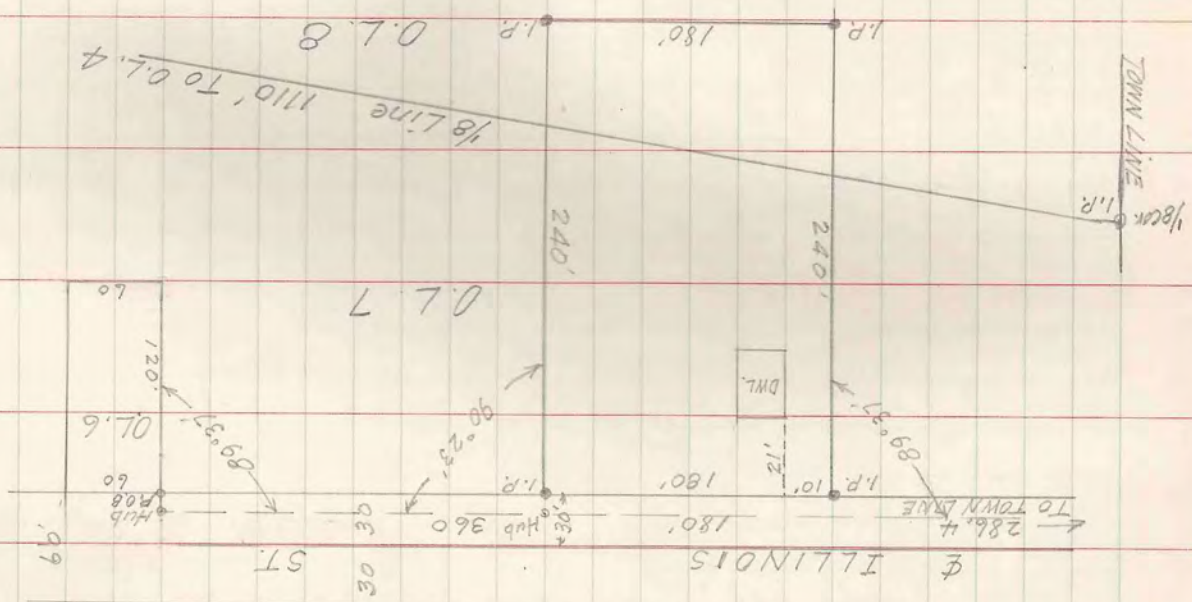
Steel to marker

SW 1/4
Sec 28
T40N R10E

EAGLE RIVER PLAT

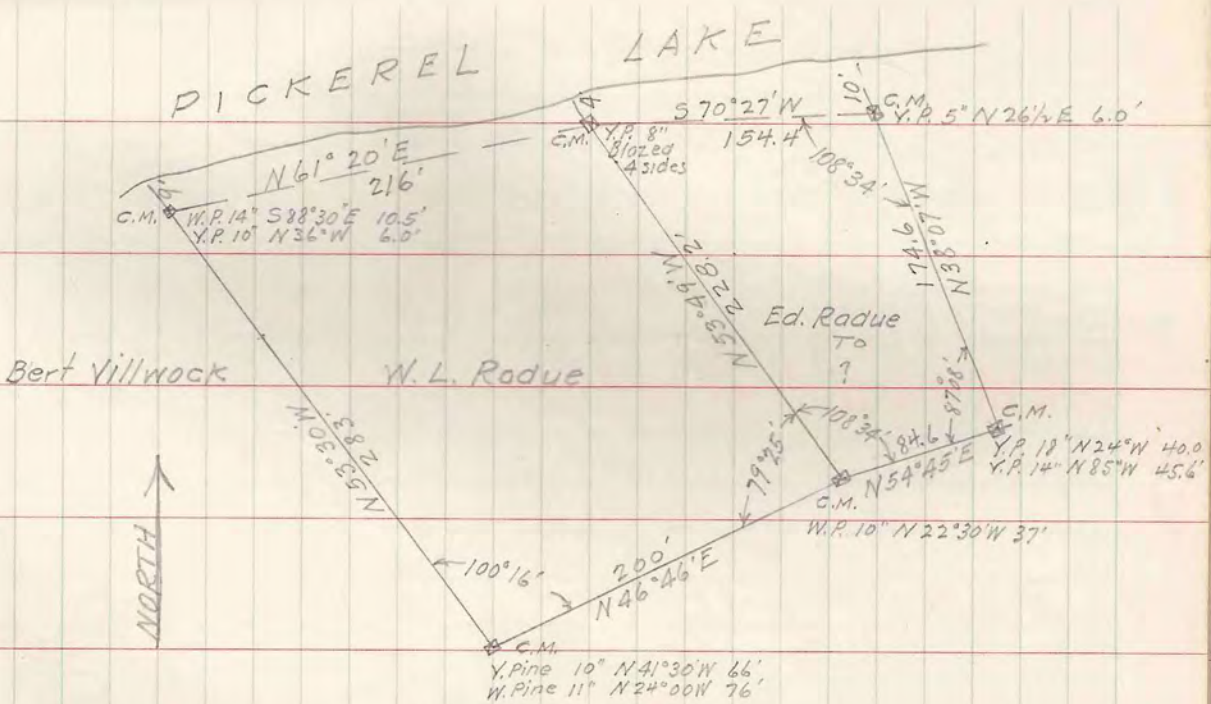
June 22 '49

Ray Dean
107 3/4 Eagle River



	N	S	E	W
N 46° 46' E 200.5	137.33		146.07	
N 54° 45' E 84.6	48.82		69.29	
N 38° 07' W 174.6	137.37			107.77
S 70° 27' W 154.4		51.66		145.49
S 61° 20' W 216.0		103.62		189.52
S 53° 30' E 283.0		168.33	227.48	
	323.52	323.61	444.84	444.78

T 39N - R 8E SEC. 8 LOT 1
 June 24 '49
 Don Hermann Asst.



M. J. Briggs
180

TAON-RIIE SEC 18
 June 27 '49 Don Hermann } Asst
 L. G. Gaortz }

SW. Sec. Cor. on Town Line
 Conc. Mon. in road 1 ft below surface
 Y.P. 14" S63°E 30.7'
 Y.P. Sta. 30" S56°E 103.3'
 Turtles conc. mon. at lot cor. 21.8' West
 Thence N along E of road

19.25 Picket line E B.T. W.P. no record
 38.50± E of road E 1/4 Cor under block top
 Lge W. Pine Stp. no marks agrees with Govt record
 Followed old picket line (random) 1/8 line
 10 Chains to fence line
 Continued with new line East

June 28 From iron pipe and maple B.T. indicated by M. J. Briggs as center of section (origin not known) Random south Var 2°E to intersection with random 1/8 line
 Distance 14.28 South and 48.19 East
 Continued random 1/4 line to 40.00 South
 Did not find Ogl. South 1/4 Cor.

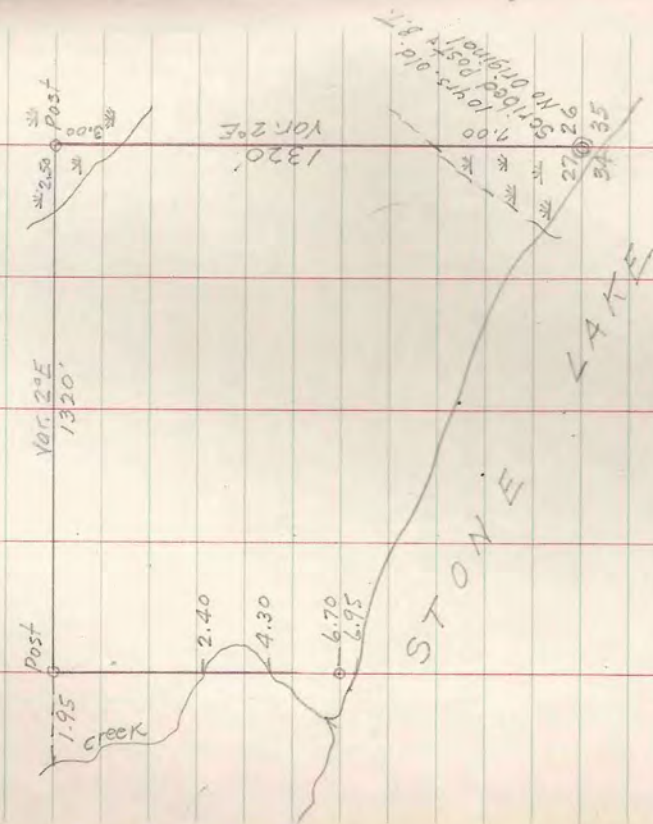
U.S. Spirit Notes
 Sec 18 - 40-11
 North bet 13, 18 Var. 8°E
 40.00 1/4 Cor W.P. 48" S46°N 68
 W.P. 30" N69°E.17
 57.25 N four Eagle Pines
 W.P. 15 S70°E .50 Nam. 12 S63°N 22
 80.00 Cor 7-12-13-18
 Bunch 12 S30°W 79 Bunch 12 S80°E 39
 W.P. 30 N14°W 28 " 12 S22°E 61
 E connected bet 18, 19 Var 8°22'E
 48.43 1/4 Cor. W.P. 30 N10°W.20 W.P. 25 S58°N.10
 77.62 M.C. Bunch 12 N42°W.10 W.P. 25 S58°W .33
 88.43 Sec cor. in lake
 N bet 17 + 18 Var 8°30'E
 37.10 M.C. Y.P. 16" N11°E .53 Y.P. 10' S87°W .25
 40.00 1/4 Cor. Maple 57°E 9 Maple 10' S77°W.27
 80.00 Cor 7-8-17-18
 Tam. 10" N88°E.31 Spruce 8 S41°W 40
 E connected bet 7, 18 Var 7°51'E
 10.24 River M.C. Tam 16 North 7 Maple 12 S72°W 6
 15.39 River M.C. Cedar 10 S45°E 7 Spruce 12 N64°E 45
 40.50 Enter Swamp
 48.50 1/4 cor Tam 10° N73°W.23 - Jan 10 S50°E 17
 88.50 Sec cor. 7-8-17-18

Mrs. E.R. Perkins
Condit Habel

T 39N-R4E SEC 27 LOT 1

June 29-30 1949

L.G. Goartz Asst.



July 25 & Aug 9 1951

Compass & tape survey of SW-SW

Sec. 26-39-4

Set post 1320' East of Sec Cor

" " 1320' N of SE cor.

No B.T.S

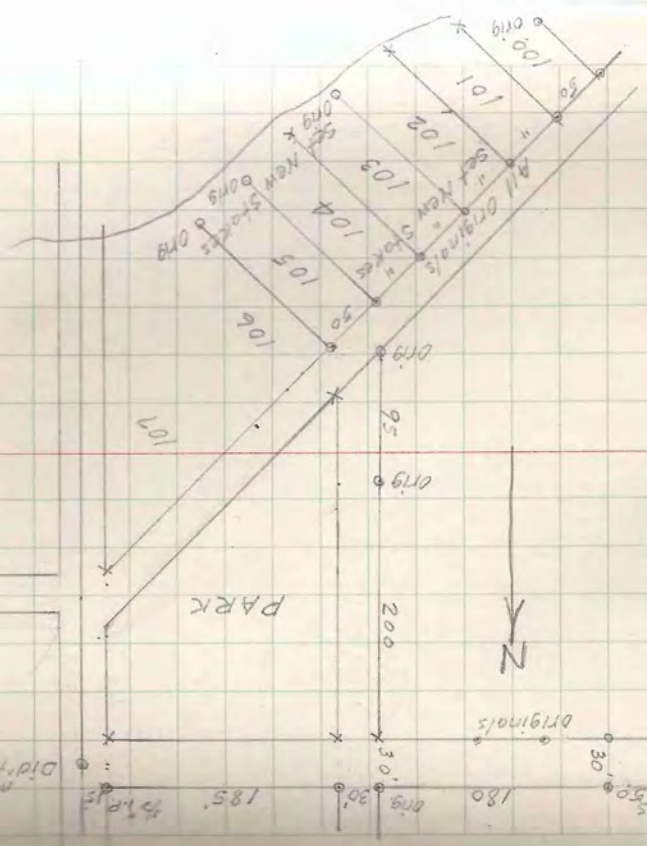
Brushed N line & South line

Bob Van Order
Chas. Smeaton & Pete Abraham Assts.

T 42N-R5E SEC. 10 LOT 2

Mrs. E.R. Perkins
July 29-30 49

(Recorded Plat)



Also located south line of Lots 3 to 13
150' south of 1/4 Line

Found Original stakes
50' 40' 50' 50' 180'
Orig. 90'
200'
Orig. 95'
107'
106'
105'
104'
103'
102'
101'
Orig. 100'

Case 507

T 37N-R 6E SEC. 14 LOT 5

Jake Cook

5804 N. Maplewood Chicago Ill.

NW Cor. Brass Cap. Galv. Iron Pipe (Maine 1937)

NW Cor to Sta. 14

A . B 104°20' S72°38'W 92.0

B . C 179°57' S3°02'E 1584.0

C . SW Sec Cor. 90°00' N87°00'E 12.9

NW Cor To SW Cor 52°17'E 5500.7

A . D -74°48' N2°10'W

D . E 216°35' N34°25'E

E . F 220°09' N74°34'E

F . G 185°21' N79°55'E

G . H 221°53' S58°12'E

H . I 193°30' S44°42'E

I . J 134°48' S89°54'E

J . K 199°52' S70°02'E

K . L 207°22' S42°40'E

L . M 182°07' S40°33'E

M . N 187°11' S33°22'E

N . O 168°06' S45°16'E

O . P 135°22' S89°54'E

P . Q 179°34' N89°40'E

Q NW Cor. 190°50' S79°30'E

(Book 21)
(see page)

L.G. Goartz July, 1949

Don. Hermann

NW Cor. to R 258°12' S1°18'E

R . S 185°39' S4°21'N

S . T 128°44' S46°55'E

T . U 205°22' S21°33'E

U . V 158°15' S43°18'E

V . W 225°43' S2°25'W

W . X 186°33' S8°58'W

X . Y 151°36' S19°26'E

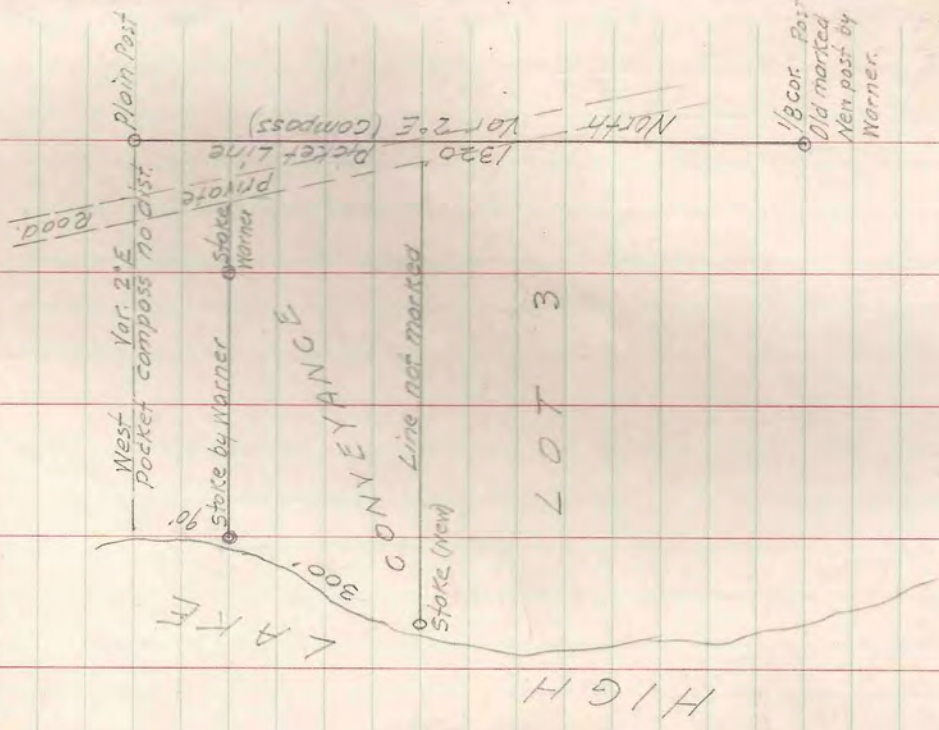
Y . Z 170°49' S28°37'E

Z . AA 207°00' S1°37'E

AA . BB 222°34' S46°57'W

H.L. Fisher
 For L.L. Kennedy

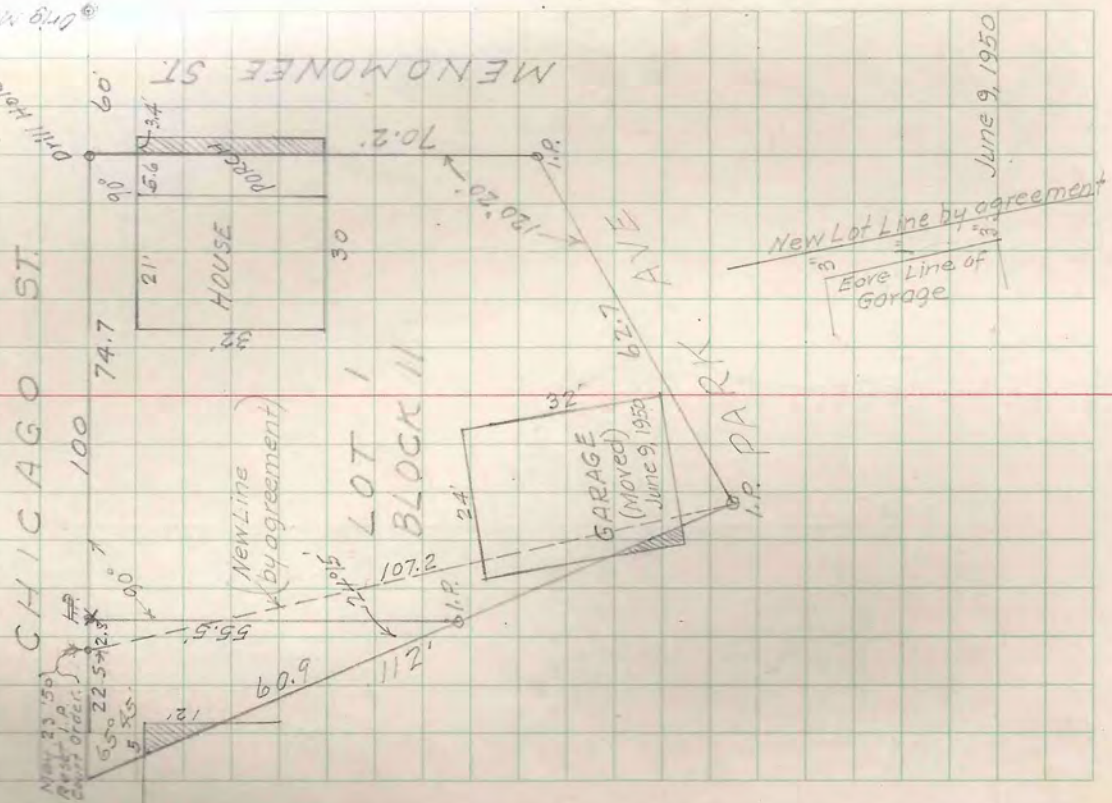
T 43N - R 8E SEC. 32 LOT 3
 Aug 4 '49
 Don Hermann



1/8 Cor. Post
 Old marked
 Men past by
 Warner.

MAT of
 MINOCQUA

VILLAGE OF MINOCQUA
 For Earl L. Kennedy Atty
 Chicago
 Aug. 8 '49



June 9, 1950

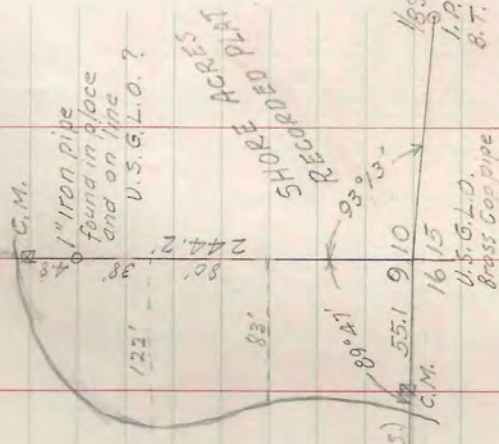
Mrs. M. Ferguson
for Wm. A. Gibson Jr.

T42N-R5E SEC. 9 LOT 8

Aug. 8 1949 Don Hermann

Retracment of part
of Dependent survey
made by R.W. Livingstone
for U.S. Gen'l Land Office
July 1929
H.C. Hall made same survey
in 1927.
Both surveys are in close
agreement.

REST LAKE



145 Brass Cop 39.66
in marsh
West of road
2 Pipe B.T.s
Set by U.S. G.L.O. 1929

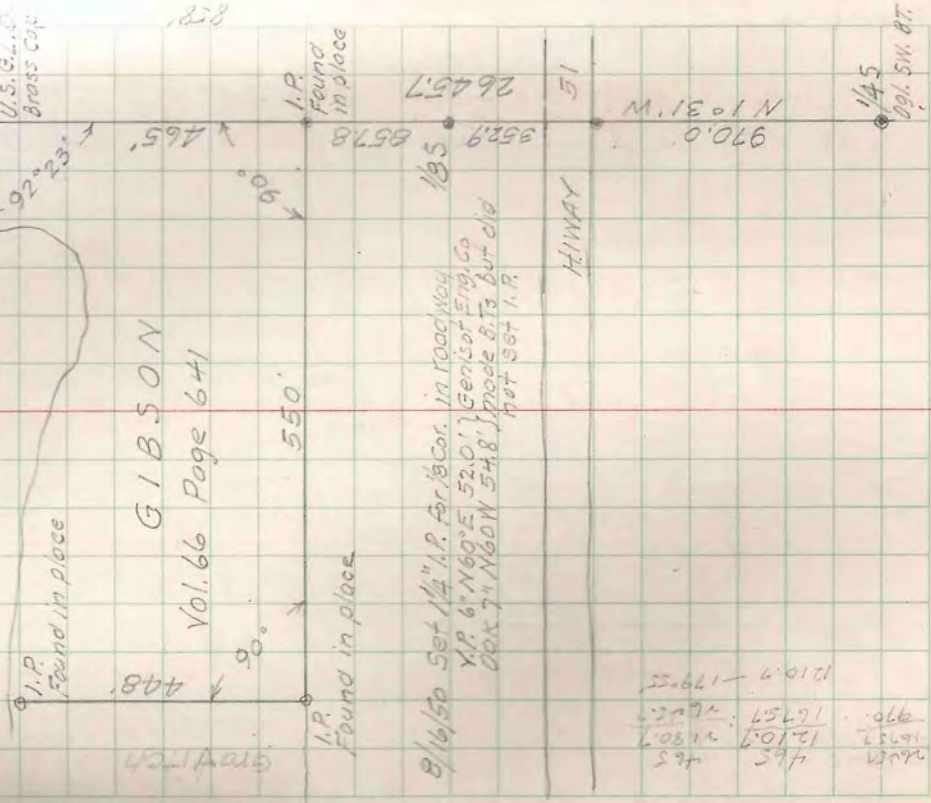
RECORDED
SHORE ACRES

T42N-R5E SEC. 16

For Wm. A. Gibson Jr.
Camp Bowie Blvd. Fort Worth Tex.
Aug. 10 + 11 '49 Don Hermann Asst.

REST LAKE

GIBSON
Vol. 66 Page 641



8/16/50 Set 1/4\"/>

145
U.S. G.L.O. B.T.

465
1210.7
16757
1210.7 - 179.55

T 38N-R5E SEC. 7 SW-NE

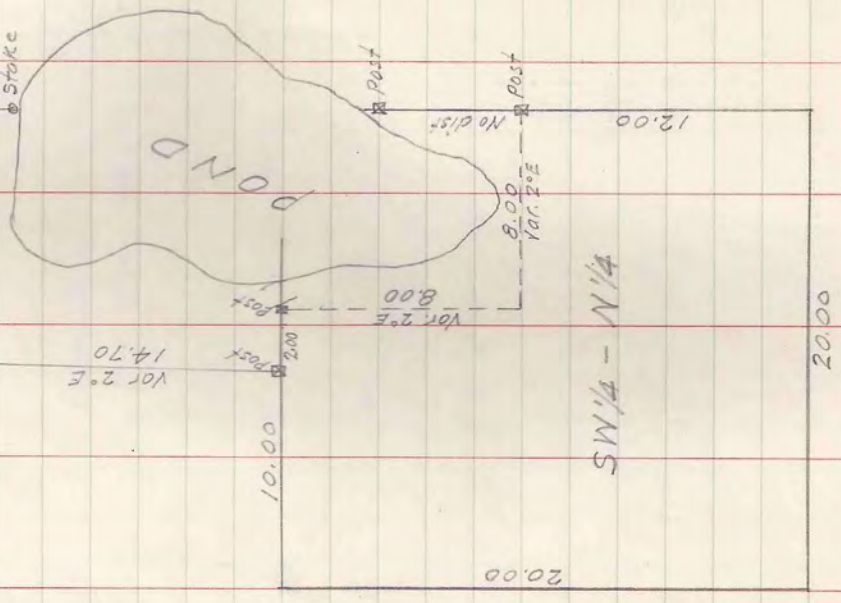
E.J. Boiter

August 12, 1949 Don Hermann

Asst.

110 00' 00" Post
N 11° 40' N
145' 615
715

Approximate Survey
with staff compass
and tape.



North

T42 N-R6E SEC. 6 LOT 7

July 9 Check angles + computing
 July 10 Sunday Set Conc Mon at C¹/₄ cor.
 At K B.S. on J 240° 57' 7.385 to C¹/₄
 K₂ " " K 264° 54' 1.983
 Set Conc Mon. of Cent. ¹/₄ Cor.
 W. Pine 13" N 86° E 44'
 Oak 9' S 25° E 36'
 At C¹/₄ B.S. on K 252° 47' N 89° 56' W True ¹/₄ Line
 Set Conc. Mon. at 7.575 = 500ft West of C¹/₄
 " " " 15.247 = 1006 " " "
 " " " 21.480 for M.C.
 Oak 6" S 49° E 26.2'
 21.91 Lake shore
 At C¹/₄ B.S. on K 163° 08' 40.274 Temp S¹/₄ Cor.
 Found Conc. Mon. broken in two pieces and old
 wooden post lying on West side of road. No S.T.s
 Reset C.M. at W edge of N-S road and N edge
 of fire lane to W as nearly as I can recollect
 where it stood when I saw it about 4 yrs ago
 and as verified by F.E. Fallon.
 W. Pine stp (forgot bearings) 27.2
 " " " 41.0

E-W ¹/₄ LINE

N-S ¹/₄ LINE

At 20.286 South of C¹/₄ B.S. N 0° 25' E on C¹/₄
 180° 10' 40.274 Offset West .058 to true S.
 Set Conc. Mon. at 40.274 ÷ 2 = 20.137
 for ¹/₈ Cor. being ¹/₂ distance between C¹/₄ and S¹/₄
 Offset from line S 0° 25' W .028 West into true
 line S 0° 35' W.
 At temp ¹/₈ Cor. before offset B.S. N 0° 25' E
 angle 90° 17' left to N 89° 52' W on true ¹/₈ line
 S.T.s to ¹/₈ Cor.
 Oak 11" N 21° E 56' Oak 10" S 77° W 103'
 Set Conc Mon. at 7.575 = 500' West of ¹/₈ Cor.
 " " " 15.15 = 1000 " " "
 " " " 24.867 for M.C.
 Oak 12" S 4° E 5.3' Oak 13" N 10° E 12.3'
 .51 to lake shore.
 At (U) B.S. on R 268° 20' to N 88° 54' E
 .344 = 22.7' Set Conc. Mon. for E¹/₄ Cor.
 Being proportioned Govt dist between SE. Cor.
 and M.C. and on true line.
 Oak 8" N 25° E 32.7' Oak 8" N 66° W 50.6'

SOUTH LINE LOT

T42N-R6E

SEC. 6

Zahren (cont'd)

Town Cor. 00
S 89° 57' W
40.96

M.C. 1.P.
W.C.D. Brass Cap
1.50
Dak 4" N 25° E 151.2' New
7" N 63° W 34.0' New
I.P. Brass Cap W.C.D.

79.75

LAKE

39.875
320W

N 0° 28' E

79.7405 W.C.D.
1.640W I.P. Brass Cap
S.W. Cor. Orig. Cor.

N 89° 21' W 40.90

80.205 S
40.759 E

.029 N
N 1/4 40.960 E

I.P. W.C.D. Brass Cap
45° 22'

N 0° 30' E 39.96 (Comp)

39.835
40.61 E

N 89° 56' W
7.667-500
21.91

20.14

500
7.575
M.C. 605.6
N 89° 57' W
891

LOT 7

248.4
151
217.6
7.575

20.14

50° 30' W

44° 47'

514 W.P. 570 ?
80.205 S
40.759 E

S 44° 57' E 56.52

N 89° 56' W
40.28 (comp)

44° 59'

E 1/4 39.973 S
80.887 E
Conc. Mon.
Dot 8" N 25° E 32.7' New
" 8" N 66° W 50.6' New

S 45° 17' N 57.18

40.06
N 0° 51' E

S 89° 45' W 40.03

80.029 S
80.293 E

30.00

T43N-R6E SEC. 19 LOT 6

Aug. 22, 23 '49 Don Herrmann Ass't

Mrs. Irene Kirk

SEC. 19 LOT 6

SEC. 30 LOT 1

ROSA LIND

Distance 327.2' (Circuit Court Order)

N 88° 15' E 306.0 (Initial bearing) Magnetic

20.1'

51.95 E

15.9

20.2'

25.2'

13.9

51.15 E (Circuit Court Order)

142.03'

177.9

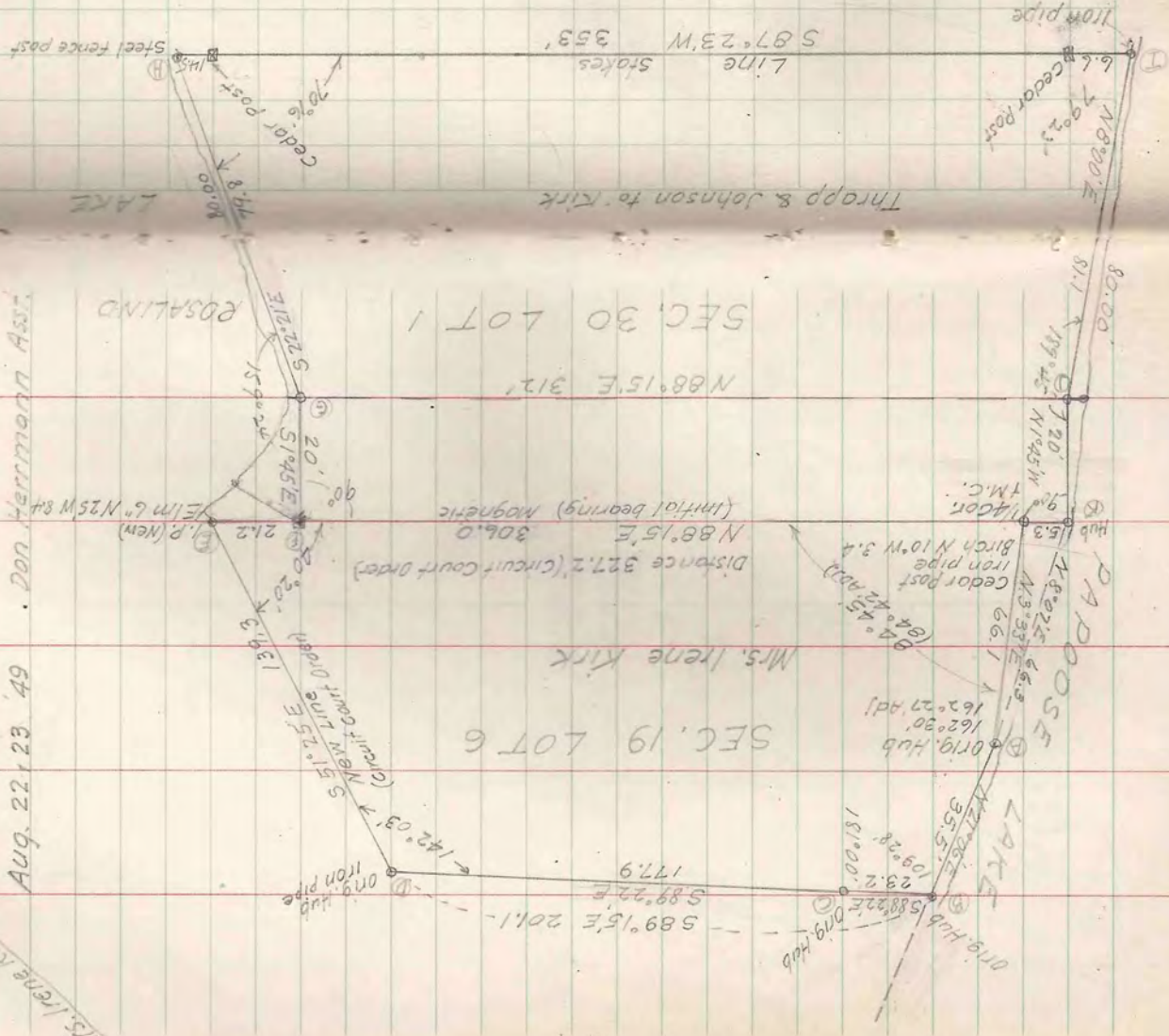
589° 22' E

589° 15' E 201.1'

Thropp & Johnson to Kirk

Total Latitudes 198.55 N 200.055

Departures 374.30 E 374.43 W



Steel fence post

110m pipe

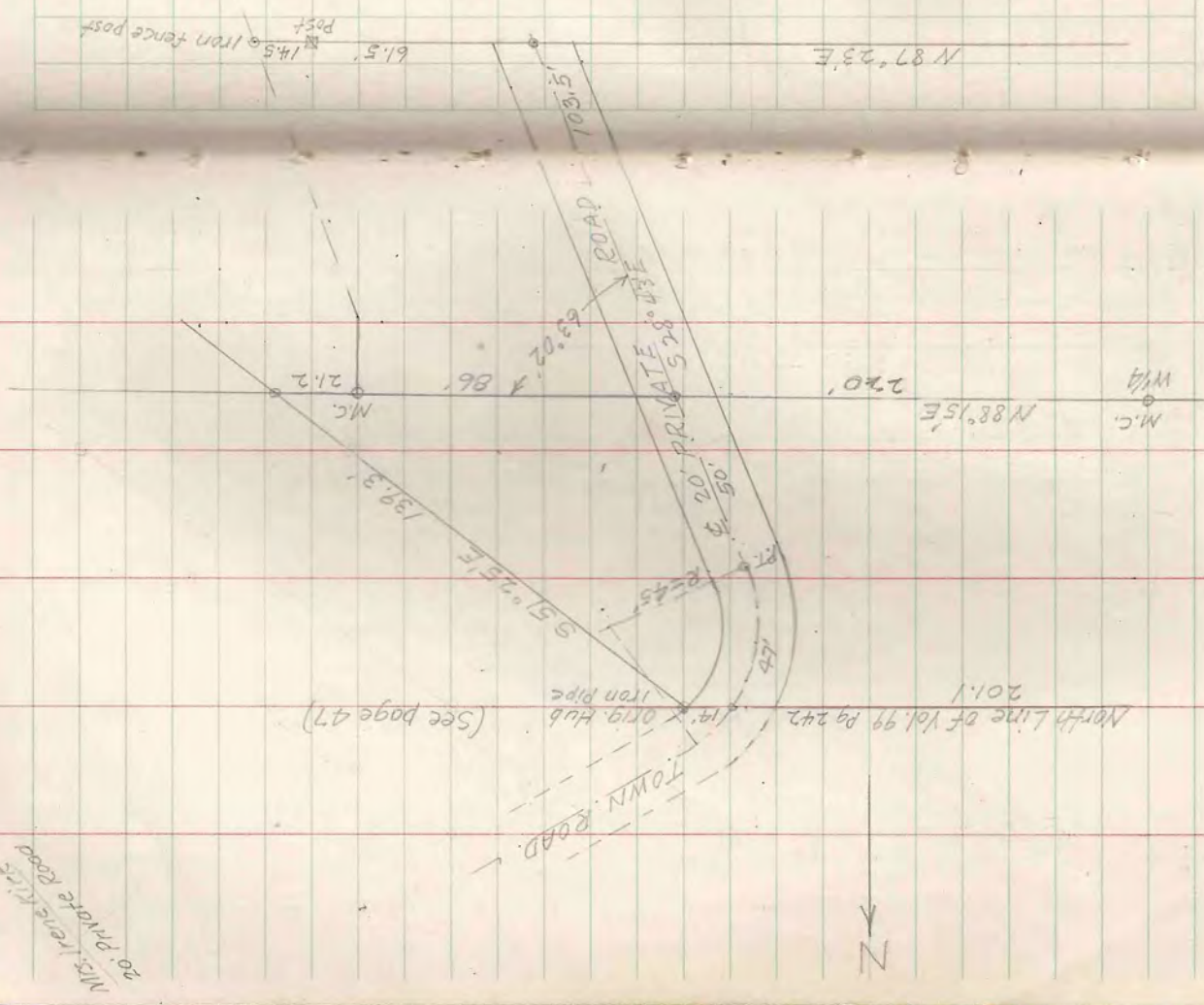
LAKES

PADOOSE

LAKES

Beginning on the north line of 20th Ave. in
 Waco Co. Records and about 200 ft Ely of the E shore of Japanese Lake
 being the same place, beginning of a Town Road designated as
 "Japanese Road" in the minutes of Highway Meeting of July 12, 1947
 as recorded on page 492 of Town Clerk's Record.
 from this place beginning thence southerly a distance of 47 ft
 on a uniform curve having a radius of 45 ft. to the point of
 tangency; thence S 78° 45' E a distance of 50 ft to a point 220 ft
 back of the corner between sections 19 and 30; thence continuing
 S 28° 45' E into section 30 a distance of 103.5 feet and then
 terminating.

Description of Center Line of 20th Road

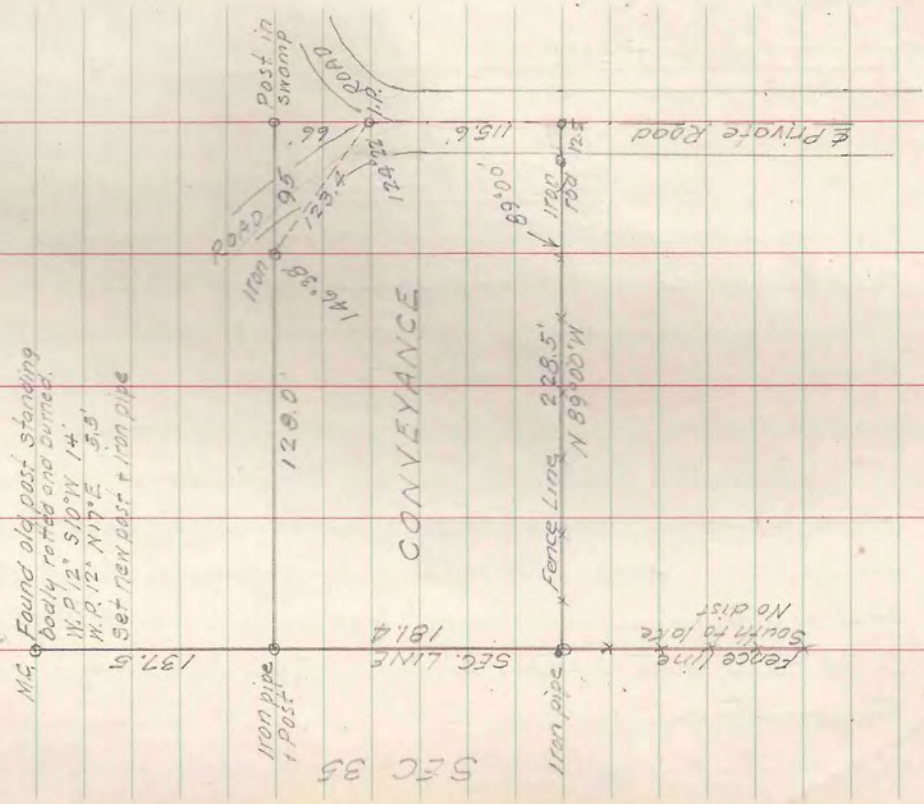


20 Private Road
 M.S. 10621725

W. J. TRAPP

T40N-RGE SEC. 36 LOT 6

Aug. 26 '49
 Don Herrmann Asst
 W. J. Trapp Woodruff Wis



T 39N-R4E SEC. 36 LOT 1

Aug. 29 49 Owner Assisting

G. Behrke
W.A. Frautsch

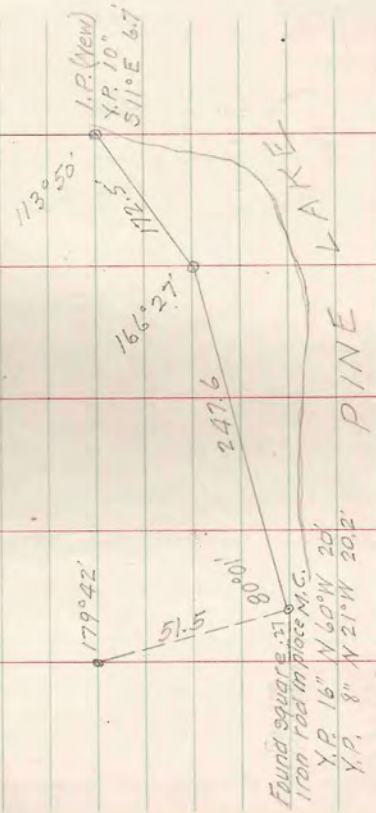
Iron pipe 1/8" in roadway past
Not run North Line sec. 36 No stake

Var 2°E (followed old) 1257.1 random line

CONVEYANCE TO FRAUTSCH

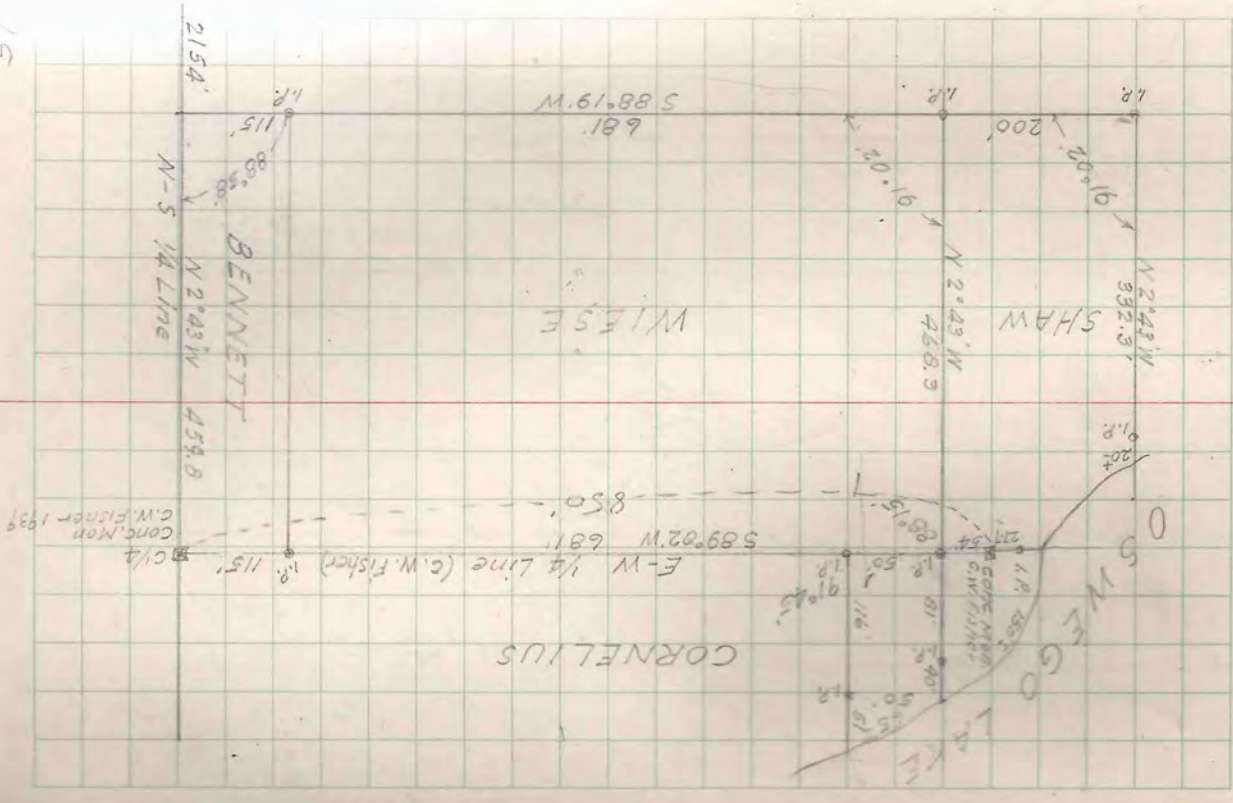
ADJ.

Parallel with W line 1195.1 (Not brushed)

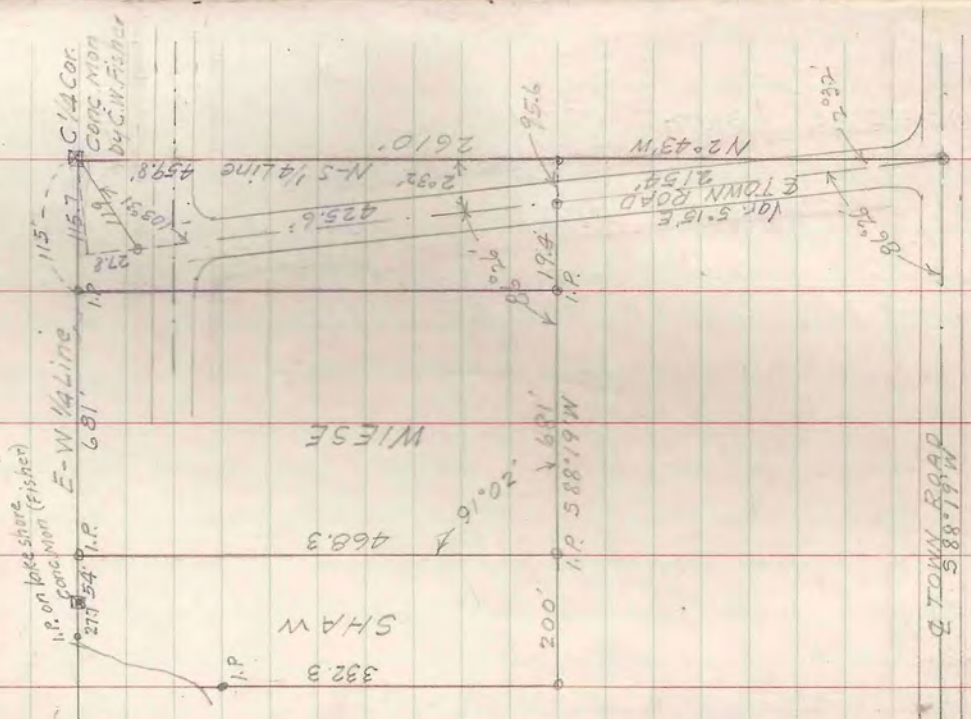


1/8 Cor - M.C.	SOUTH	1308.6	247.3	4414	249.32
M.C. - A	N 79° 42' E	247.3	4414	157.79	
A - B	N 66° 10' E	172.5	69.70	1308.6	
Coord of B	1194.8 S	4011.1 E			

N S E



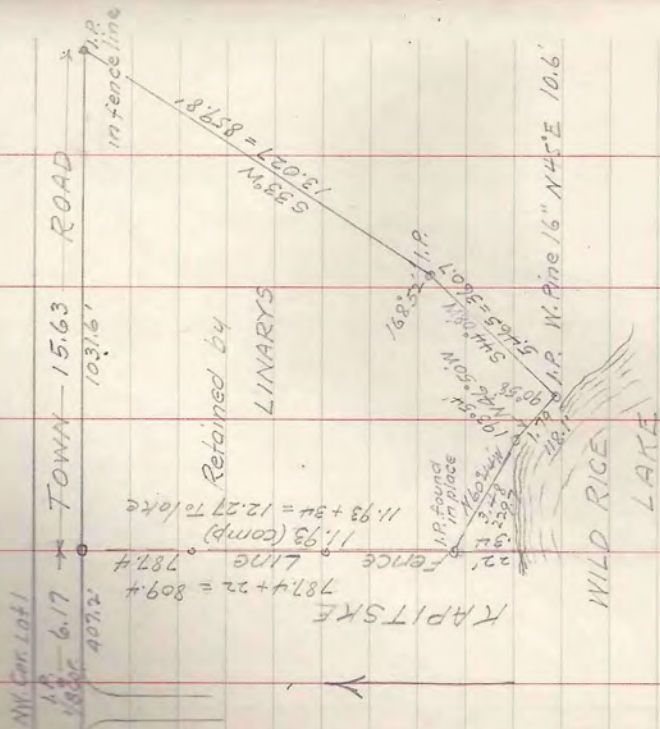
T42N-R7E SEC. 10 NE-SW
 R.E. Brandenburg
 611 N. Broadway Milwaukee Wis
 For Shaw and Wiese (owners)



TOWN ROAD

T42N-R6E SEC. 31 LOT 1

Sept 5, 49 Assisted by owner

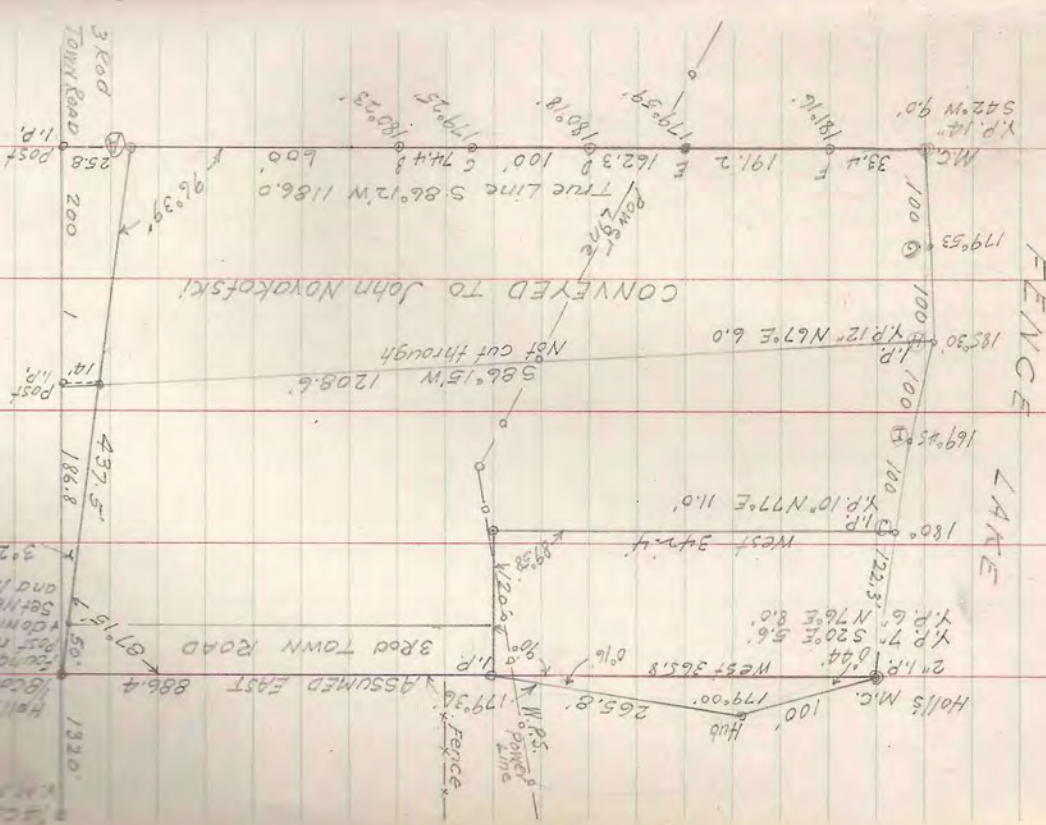


	N	S	E	W
East	15.63		15.63	
S 33° W	13.027	10.925		7.95
S 44° 08' W	5.465	3.923		3.803
N 46° 50' W	1.79			1.305
N 60° 44' W	3.48			3.036
	2.927	14.848	15.63	16.094

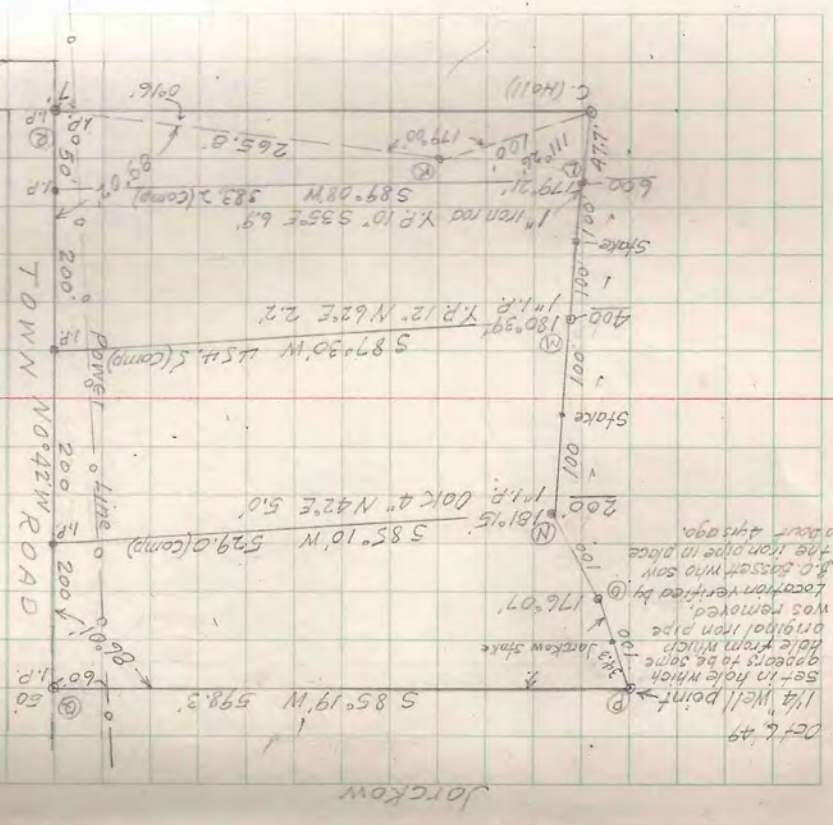
16.094 - 15.63 = 0.464
 14.848 - 2.927 = 11.921

Dist 11.93

T40N-R5E SEC. 14 LOTS 2-3
For Dane Crook
6458 N. Nakoma Ave
Chicago 30 Ill.



July 26, '47 Aug. 1, 2, 3
Sept. 10, '49 Original shore line traverse
Oct 6, '49 corrected shore line traverse
' 13 Set I. Pipes on Road line
' 13 Brushed and measured Jarckow line

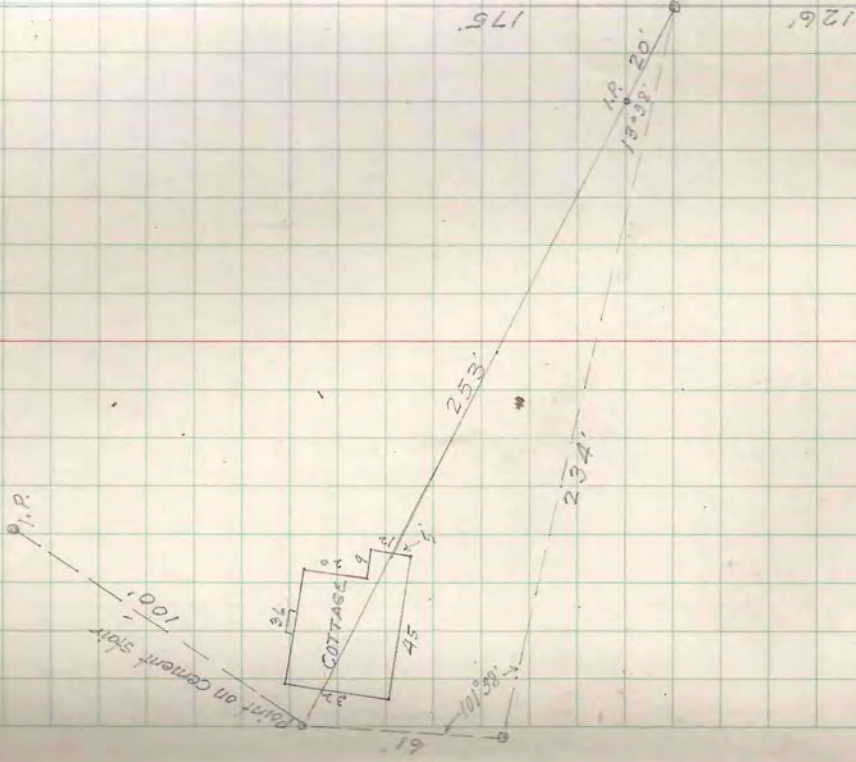
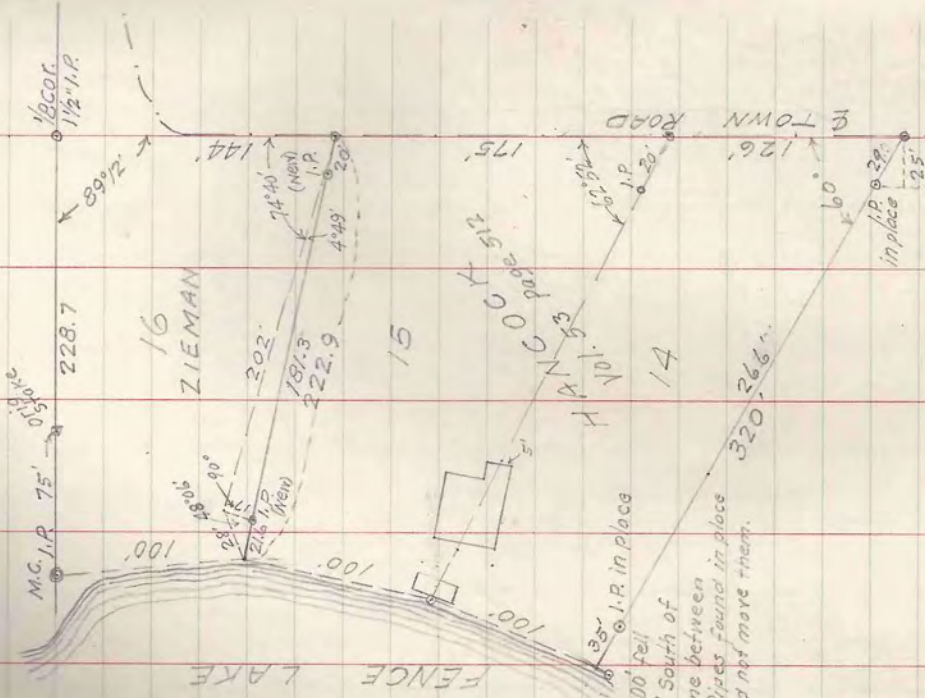


T40N-R5E SEC. 26

Robinsons Subdivision

C.Y. Hancock Clinton Herald Clinton Iowa.

Sept 9 '49



T42N-R7E SEC. 11, LOT 8

For S.H. Rosenthal Att'y.
 38 N La Salle St. Chicago 2
 6230 N. Hyde Ave. Chicago 45 Ill.

Sept 14-15 1949

Traverse of point of land in Fishtrap Lake
 attached to Govt Lot 8

Sept 14 Brushed shore line

Sept 15 Began of Orig M.C. between Sec 2 + 11

Orig W. Pine Stump about 4' high at water's edge
 badly rotted, facing sound but defaced excepting
 few scribe marks. Cor. falls in lake.

(Mag. var. 0)

M.C.-1	S 56°30'N	195	14-15	N 69°00'E	48'
1-2	S 14°00'N	277.5	15-16	N 23°00'E	86.6
2-3	S 57°15'N	118.8	16-17	N 21°45'W	125.4
3-4	S 40°30'W	111.6	17-18	S 88°15'E	61.1
4-5	S 12°30'W	95.6	18-19	S 66°30'E	68.8
5-6	S 8°00'E	75.1	19-20	S 44°30'E	103.6
6-7	S 44°30'E	80.2	20-21	S 39°30'E	111.9
7-8	N 80°45'E	81.4	21-22	S 53°30'E	80.8
8-9	N 71°15'E	125.4	22-23	S 45°15'E	118.3
9-10	S 88°45'E	80.4	23-24	N 54°45'W	76.6
10-11	S 67°45'E	73.1	24-25	N 60°15'W	69.2
11-12	S 57°00'E	58.0	25-26	N 71°30'W	77.4
12-13	S 87°00'E	105.2	26-27	S 86°45'W	108.4
13-14	S 79°15'E	92'	27-28	S 61°15'W	82.7

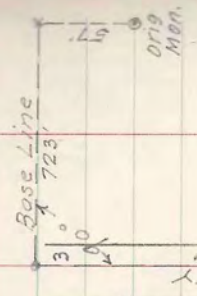
28-29	S 78°15'W	224.3			
29-30	S 60°00'W	46.5			
30-31	S 21°30'W	129.1			
31-32	S 74°00'W	72.2			
32-33	S 76°45'W	53.4			
33-34	N 35°30'W	62.1			
34-35	N 36°00'W	71.5			
35-36	N 46°15'W	100			
36-37	N 59°45'W	112.6			
37-38	N 44°30'W	184.9			
38-39	N 83°30'W	110.1			
39-40	S 72°45'W	82.2			C.M. set by W.A. Hennig
40-41	N 19°15'W	204			I.P. in road
41-42	N 63°30'E	129.4			I.P. in road
42-43	S 88°45'E	281.2			C.M. set by W.A. Hennig
Sta. 3	P.O.B. of description				C.M. Birch 6" N 80° E 70'
"	40 C.M.	9'	from shore		No B.T.
"	40A C.M.	188'	N 19°15'W from 40		
"	41	Iron pipe	16' from 40A		
"	42	"	"		
"	42A	C.M.	34.9 from 42		
"	42B	3/4" iron pipe	107.8 from 42A		
"	43	C.M.	138.5 "		42B

VILLAGE OF MINOCQUA

Part of Lots 3-4-5 Block 13

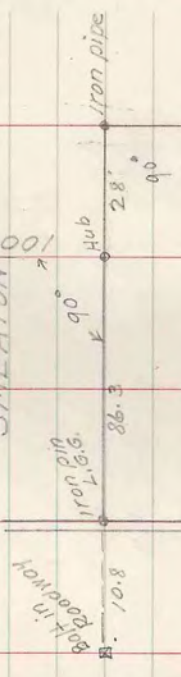
Sept. 20 '49

CHICAGO ST.



PARK AVE

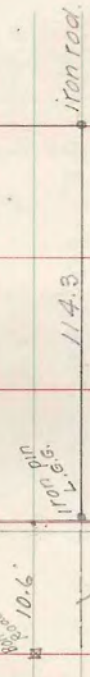
SMEATON



O'LEARY

HIMAY

C. BASSETT



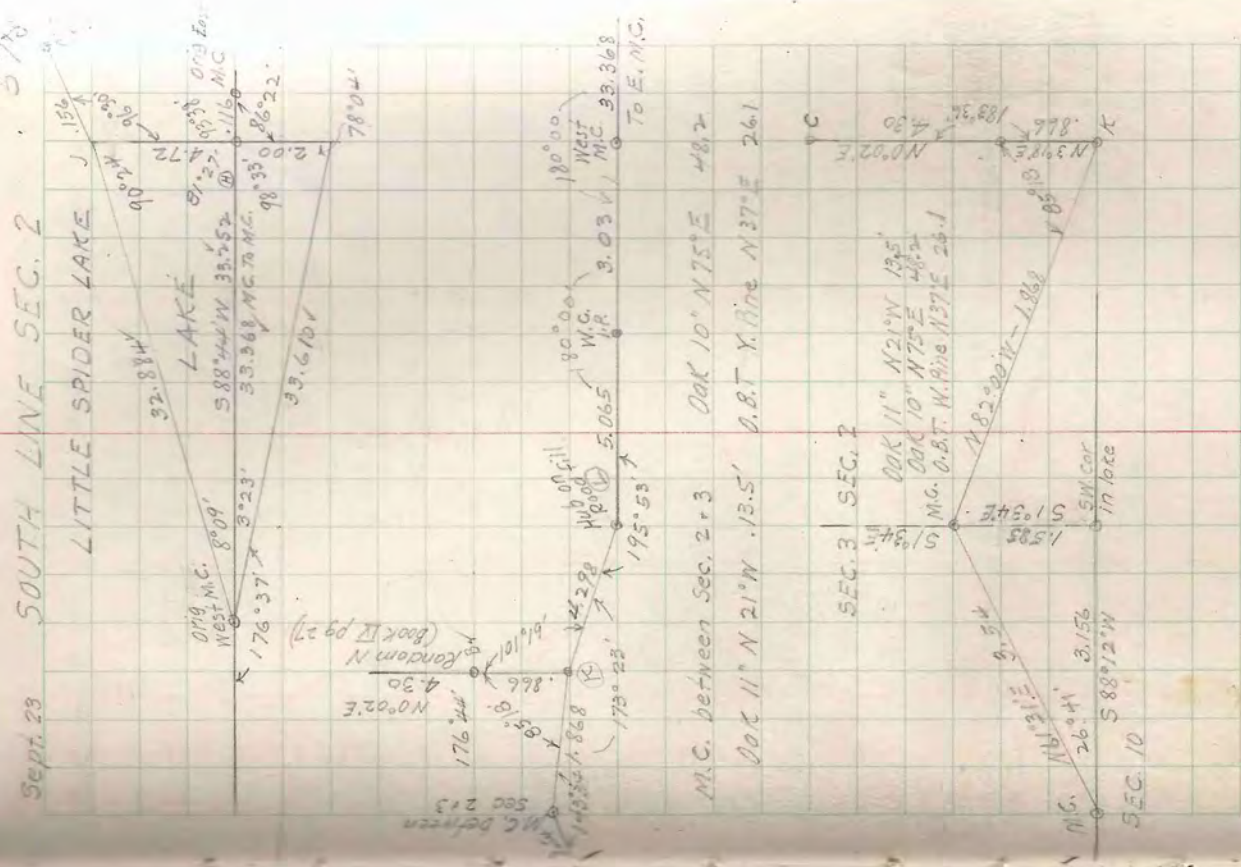
28
86.3
10.8
125.1

Handwritten note: *Handwritten note*

T40N-R6E SEC. 2 LOT 1
 For Hoo & Emil Matke Woodruff Wis.
 Hugo Matke - Bob Herrmann Asst.

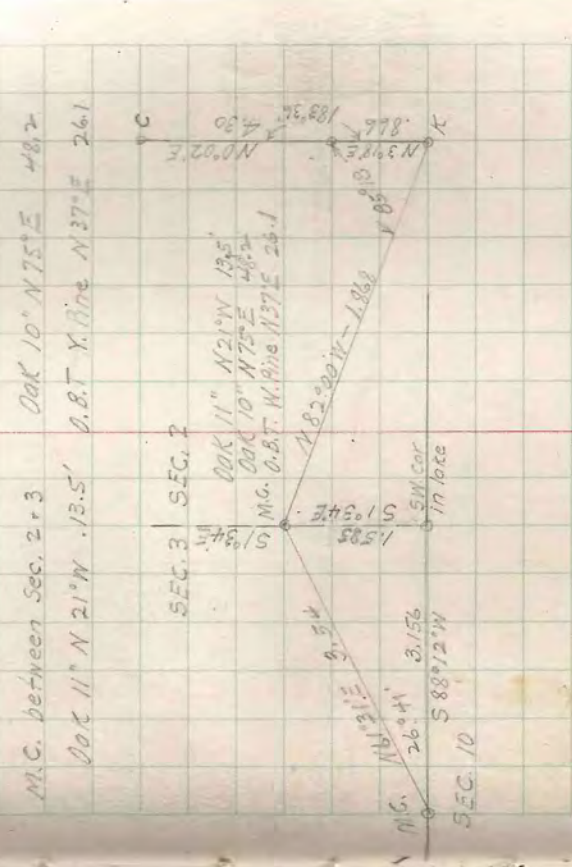
Sept 21 Re-brushed old line E from Hinway St
 " " " " " " "
 Sept 22 On N line found 1" Galv. iron pipe & B.T. (P)
 Thence N88°20'W (Mag.) on old brushed line
 13.205 to Sta 'A'

13.205	171°12'	2.96	Sta. B E side Hinway St
A 'A'	180°00'	3.973	M.C. Con. 95-36 Brass Cap Pipe
" B	99°10'	20.00	Sta. C' E side Hinway St
" C	180°00'	38.654	" D " "
" D	87°22'	11.477	" E in field
" E	202°55'	1.053	" F "
" F	158°57'	8.660	" SE Sec. Cor.
" D	266°42'	10.511	" "
" G	175°41'	.885	East M.C.
" M.C.	180°00'	.116	H on shore lorc.
" H	86°22'	2.00	I S end of lorc.
" H	-93°38'	4.72	J N " "
" H	184°55'	39.25	over lorc to M.C.
" M.C.	180°00'	8.095	" L "
" L	195°58'	42.98	" K "
" K	173°23'	1.868	M.C. betw Sec 2 & 3
" K	258°41'	.866	Sta. D Book IV page 27 Random to M/C cor.



Sept 23 SOUTH LINE SEC. 2 578

LITTLE SPIDER LAKE
 32.884
 LAKE
 588°44' W 33.252
 33.368 M.C. to M.C. 98°35'
 35.610
 176°37' 8°09'
 019 M.C. WEST
 176°44'
 4.30
 NO°02'E
 Random N (Book IV pg 27)
 173°25'
 195°53'
 180°00' WEST
 3.03
 33.368
 To E. M.C.



M.C. between Sec. 2 & 3
 DAK 10° N 75° E 48.2
 DAK 11° N 21° W 13.5'
 DAK 10° N 75° E 48.2
 DAK 10° N 75° E 48.2
 M.C. O.B.T. N. 91° 13' 26.1
 SEC. 3 SEC. 2
 SEC. 3 SEC. 10
 M.C. 26°41' 3.156
 588°12' W
 SW. Cor. in lorc.

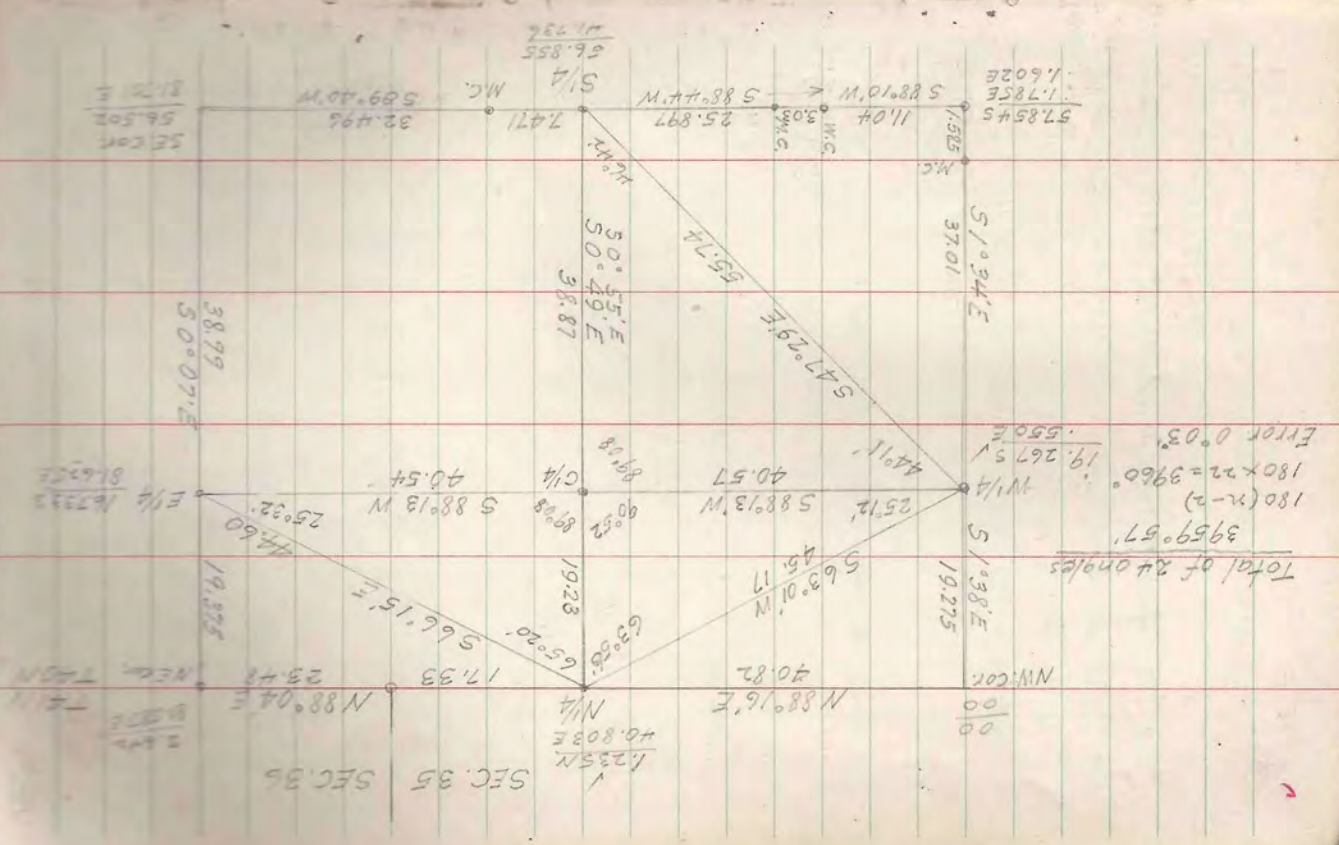
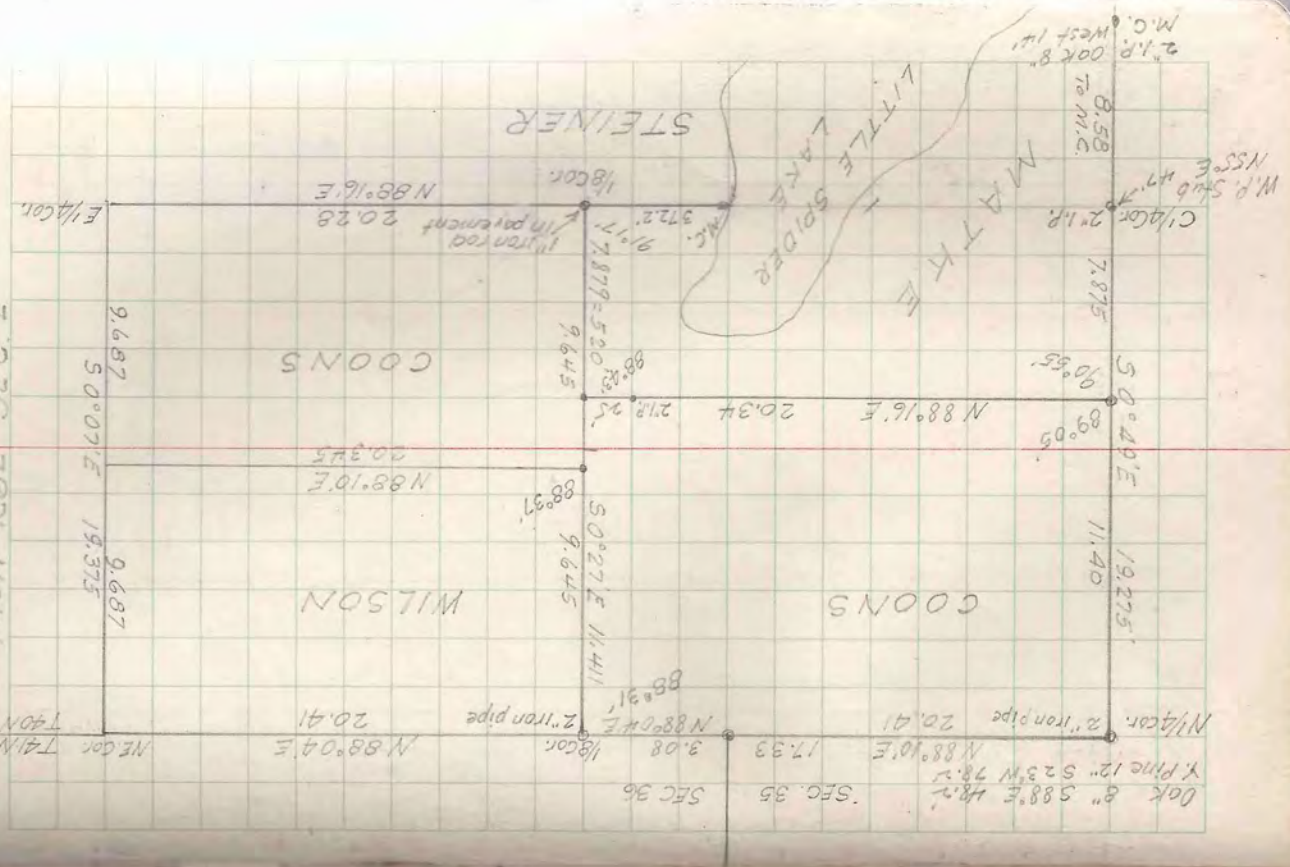
NORTH LINE SEC. 2 and 36

M. Cor. 35+36	189°47'	6.70	Sto M
M-N	172°40'	6.10	
N-O	182°11'	2.55	
O-P	194°30'	10.00	
P-Q	152°15'	8.61	
Q-R	193°20'	7.00	
R-NW Cor.	181°22'	17.516	
NW Cor. - S	89°24'	15.000	(see Book to pg 57) West 4th
Sto. Cor. pipe 1/6"			below surface
W. Pine 20" ±	562°W	30'	
Maple 10"	N 32°W	38.7	
West M.C. between Sec. 36 and 1			
W.C.D. Pipe down. Reset it from B.T's			
W.P. 12"	N 3 1/4°E	.497 = 32.8'	
W.P. 16"	N 34°W	.182 = 12.0'	
Thence West			
W. Birch 6"	N 5 1/4°E	.40 = 26.4'	
W. Birch 7"	N 6°W	.315 = 20.8'	
At Sto (B)			
From Sec 35+36	188°48'	13.205	To 1/8 Cor 36
At 1/8 Cor.	176°14'	12.667	To T
At T	182°07'	7.33	To 1/4 Cor
At 1/4 Cor.	178°28'	2.687	M.C. Sec 136

W.C.D. Notes

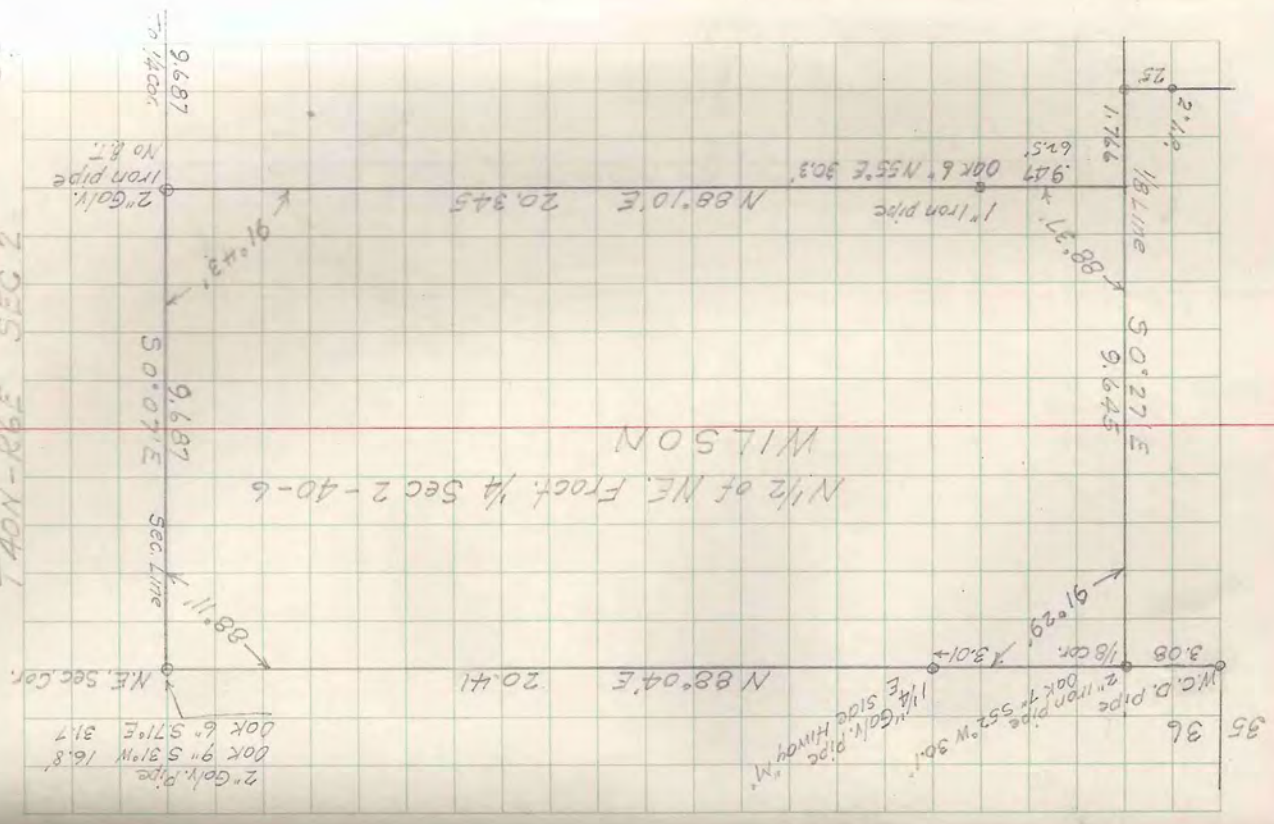
1998	1/8	1998	1/4	209 Mc	21.183	Mc	16.087	31	R7E
Tenderhook Lake									
TWP Cor. - Cedar stakes, mound of stones									
Ogl. Birch in Sec 36, Stake marked 8.T.									
Reset cor. B.T. F.G. Wilson 6/10/1913									
5/13/57 Set W.C.D. pipe. X Birch 14" N45°W .693									
East M.C. - Ogl. X Pine Set W.C.D. pipe									
W. Pine 14" N31°E .575. This M.C. is .061 N									
of line between the two section corners.									
West M.C. Set W.C.D. pipe									
W. Pine 12" N3°E .497 W. Pine 16" S34°W .182									
1/4 Cor Set W.C.D. pipe									
W. Birch 6" N51°E .40 W. Birch 7" N6°W .315									
1/8 Cor. Set 1 1/4 Galn pipe Maple 7" N57°E .481									
Sec. Cor. 35+36 Found rotted stake in hole + NE B.T.									
Mitten camp's B.T. Oak 4" N19°E .212									
New Oak N28°W .363 marked same with (E)									
New B.T. Oak 6" N18°W .547									
W. Birch 5" S18°W .188									

T40N-R6E SEC. 2

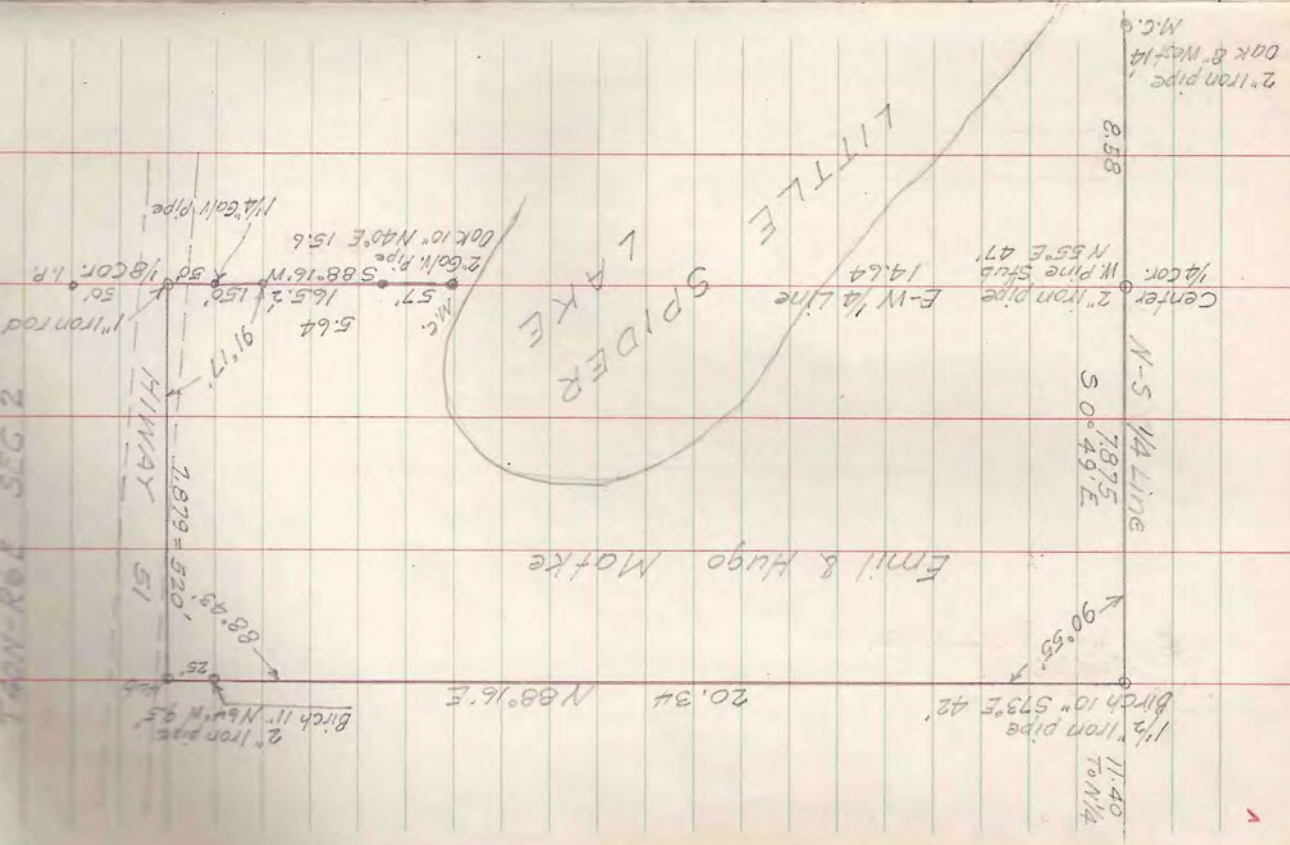


66

T40N-R6E SEC 2



T40N-R6E SEC 2



East line Sec 2
 887 9.687
 50°07'E

E 1/4 cor
 2" Golf pipe
 W. Pine 12" S 26°W 81.9'
 Oak 12" S 83°W 66.0'

E-W 1/4 line

N 88°16'E 20.28

1/8 cor
 1" iron rod
 In patent 332
 15.78
 4.55
 3040'
 4.355
 12152'
 4343'

COONS

N 88°10'E 20.345
 (Not brushed)

1" iron pipe
 Oak 6" N 55°E 30.9'

N 0°27'W
 88.37
 947

MATKE
 7879 = 520'
 HIGHWAY 9.645

2" IR
 25'

Corners

N 1/4 Cor. Set from Sta 0° angle from 'B' 344.72
 to S 85°32'W Dist 2.007

2" I.P. Oak 8" S 88°E 48.7'
 X.Pine 12" S 23°N 78.2'

East 1/8 on North Line Set from W.C.D. Cor. Sec. 35+36
 angle from Sta 'A' 5°48' Dist. 3.08
 2" I.P. Oak 7" S 52°N 30.1'

N.E. Sec Cor. Set from West 1/8 on South line Sec 36
 angle from 'A' 177°0' Dist 3.396
 1 1/2" I.P. Oak 9" S 31°W 168' Oak 6" S 71°E 31.7'

Center 1/4 Cor. Set from N 1/4 cor. S 0°49'E 19.28
 2" I.P. M.Pine Stub N 55°E 47'

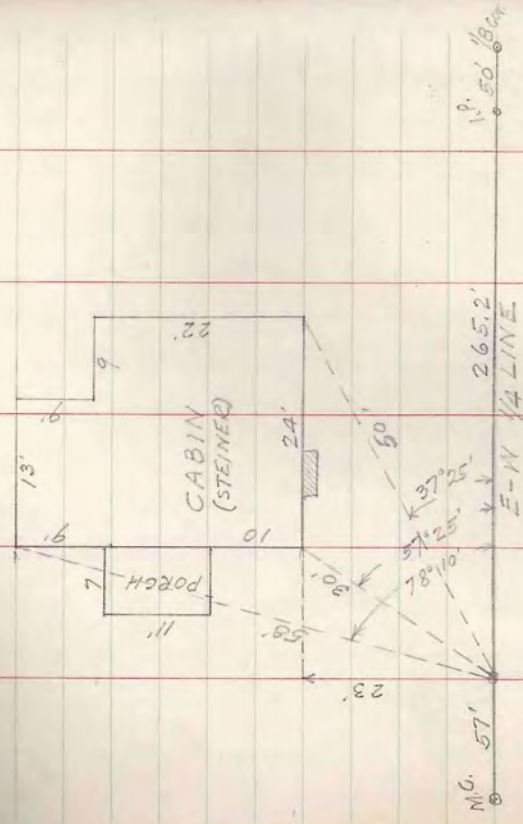
East 1/8 cor on 1/4 line Set from Sta. 'C' angle from 'B' 321.78' to N 37°16'W Dist. 3.442
 1" iron rod in pavement.

East 1/4 Cor. Set from E 1/8 on 1/4 line, angle from E 1/8 on N line 88°43' to N 88°16'E Dist 20.18
 and from N.E. Cor. angle N 1/8 Sec 36 271°39'
 to S 0°07'E Dist 19.375

2" Golf Pipe
 N. Pine 12" S 26°W 81.9'
 Oak 12" S 83°W 66.0'

T40N-R6E SEC. 2 LOT 1

Oct 8, 49 Sub 2" Galt. Pipe for M.C. on 1/4 Line
 East Shore Little Spider Lake
 Oak 10' N40°E 15.6'



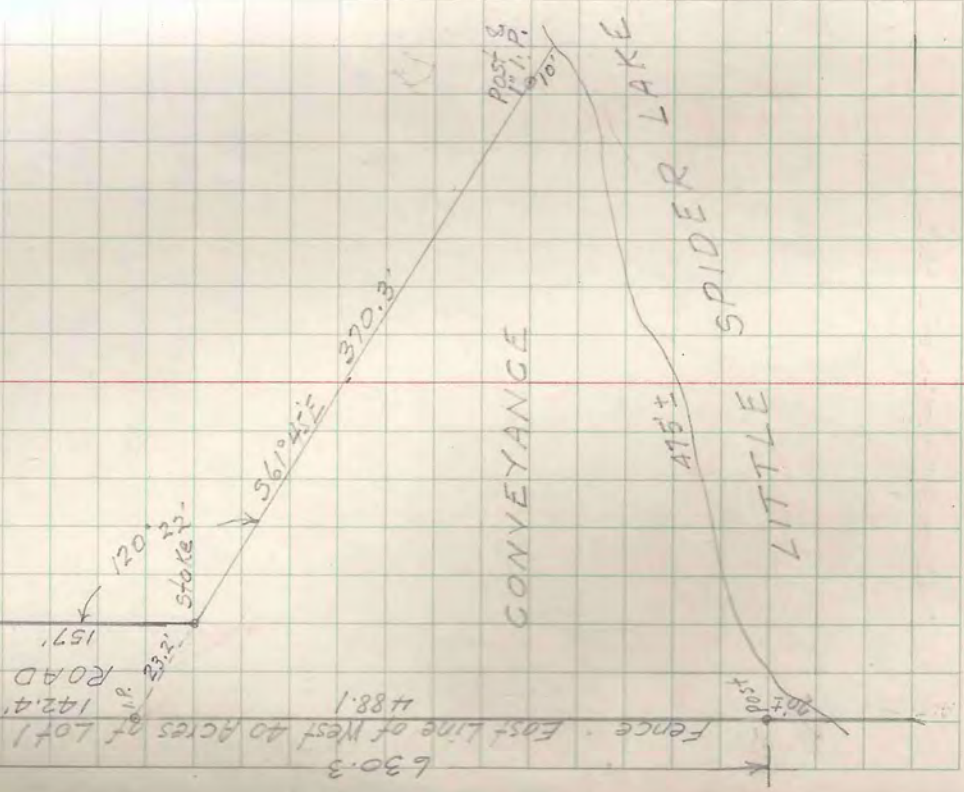
Angles to Close

80°50'	2060 294
93 18	
184 19	179 40
175 05	181 05
164 07	178 49
101 19	89 24
183 16	181 22
179 32	193 20
179 37	152 15
181 10	194 30
273 59	182 11
88 17	172 40
180 05	189 47
2060 294	3950 597
	180° x 22 = 3960
	Error 0°03'

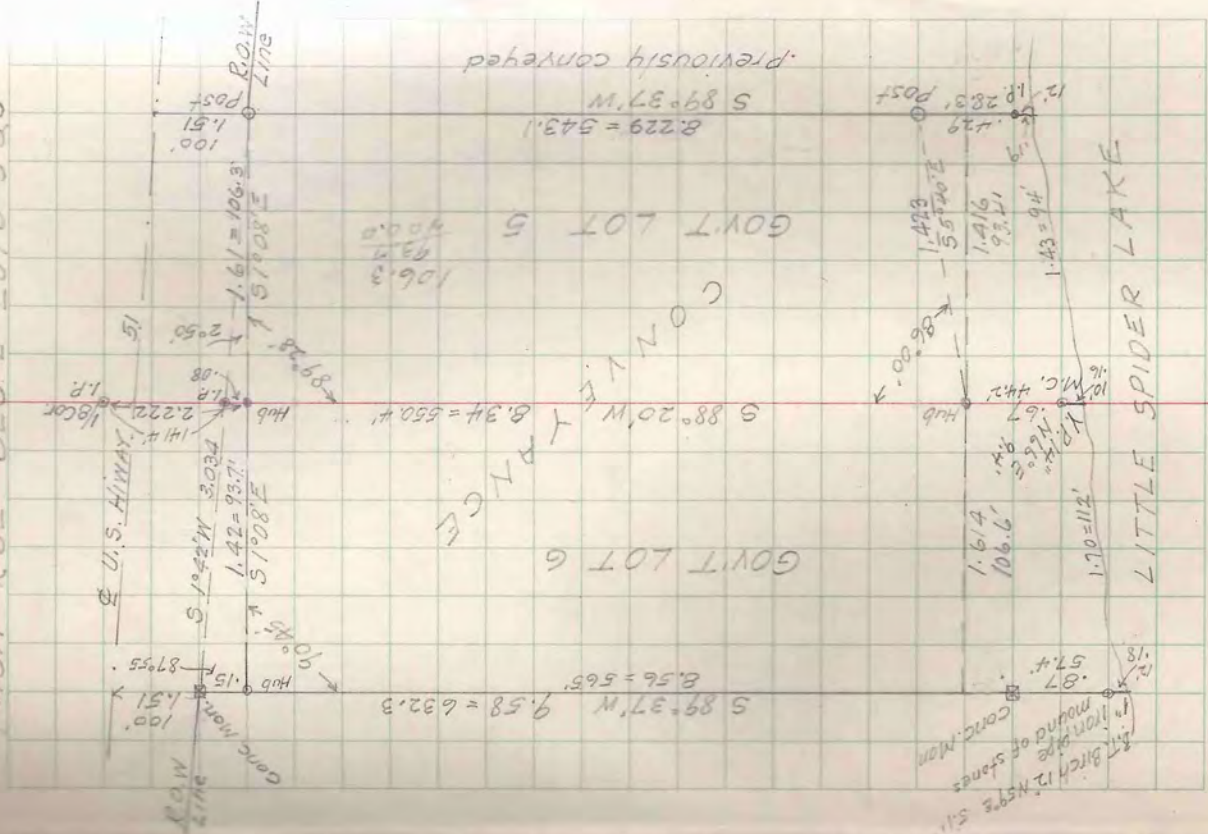
T40N-R6E SEC. 10 LOT 1 62

Oct 8, 49 For Bill Kubenik Assst. by owner

NE Cor of 1/4 40 Ac of Lot 1
 Auto Drive Short
 20' Stake
 957' to M.C.
 937' to M.C.
 SEC. 3 Orig. M.C.
 SEC. 10



T40N-R6E SEC 2 LOTS 5 & 6 65X



T40N-R6E SEC 2 LOT 5 & 6

Oct 10 '49
 To set C 1/6 of SE 1/4 and 1/8 line West to b/c
 At Stn. C (see page 57) angle from B
 $180^{\circ}00'$ to $S 1^{\circ}26'W$ 18.647 set B
 At B₂ angle from B: $141^{\circ}54'$ to $S 36^{\circ}40'E$
 Dist .702 to C 1/6 cor. Set 1" iron pipe for Cor
 S.T. Birch $9^{\circ}N 41^{\circ}E - 15.2'$ At C 1/6 angle from
 B₂ $36^{\circ}12'$ (Computed) $36^{\circ}12'$ (Observed)
 $305^{\circ}00'$ to $S 88^{\circ}20'W$ on true 1/8 line
 between Gov't Lots 5 & 6

10
 565
 574
 637.4

T40N-R5E SEC. 8 SE-SE

Oct 18-17-18-19-
14 WA
Bob Herrmann Asst.

Measured West from U.S.G.L.O. corner of

Sec. 8-9-17-16.

150' Lv. Swamp. 1320' temp. 18' cor.

2645' 1/4 Line. Marked stake r B.T. South of road.

Set transit on true line between Sec. Cor and U.S.G.L.O. M.C. on E shore Long Interlocken Lake.

Drove auto axel shaft in pavement on

true line of 1322.5 West of Sec cor.

from which Y.P. 26" 5.36'E 28.8'

W. Pine St. N 51°W 47.6'

Oct. 14 Eagle River--- Deed records, made sketch

15 Field preliminary -- search for corners.

17 1/2 day -- rain

18 19 20 + 21 rain

22, 24, 25, 26, 1/27

Drawing map. 6 Blue prints

9 Conc. Map. Olson +

3 Descriptions Aldenberg /

Mrs. Abby Rehm

Meurer

Schmitz

Olsenberg

Olson

40 "

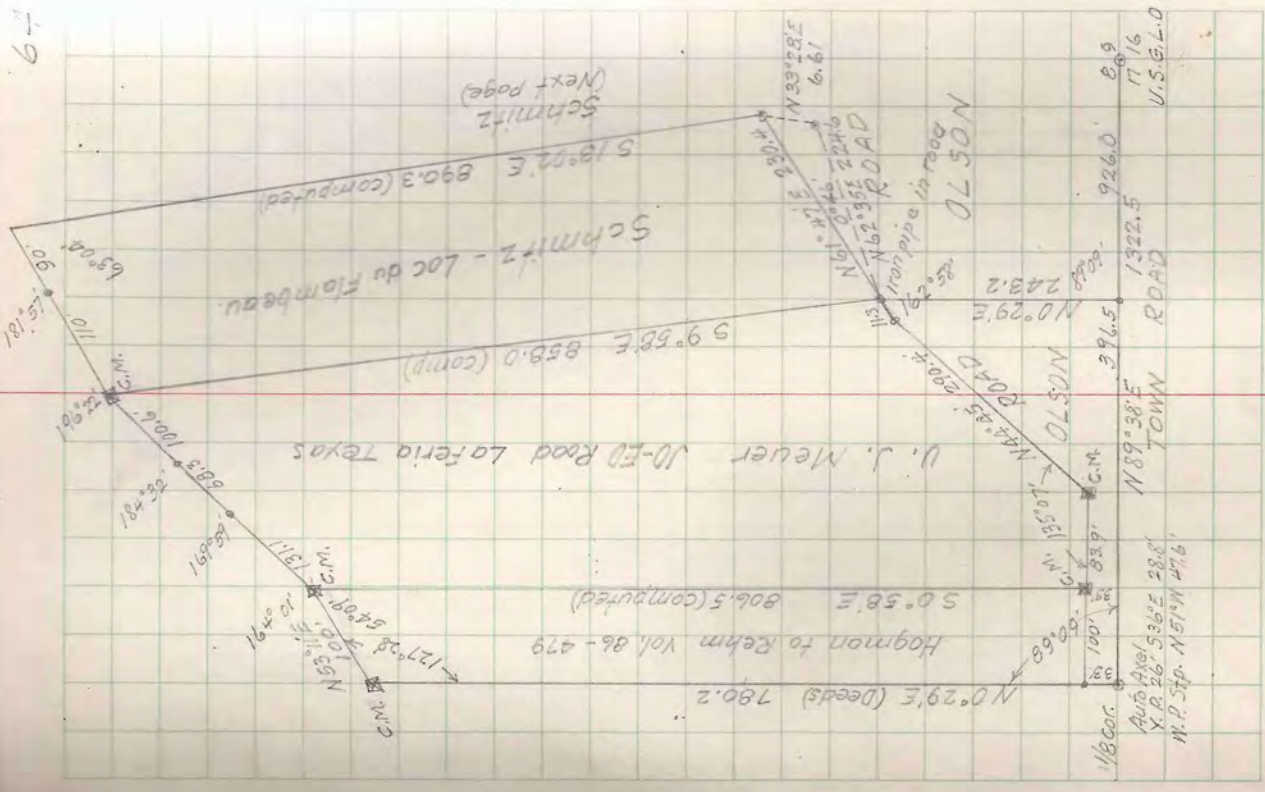
50 "

50 "

60 "

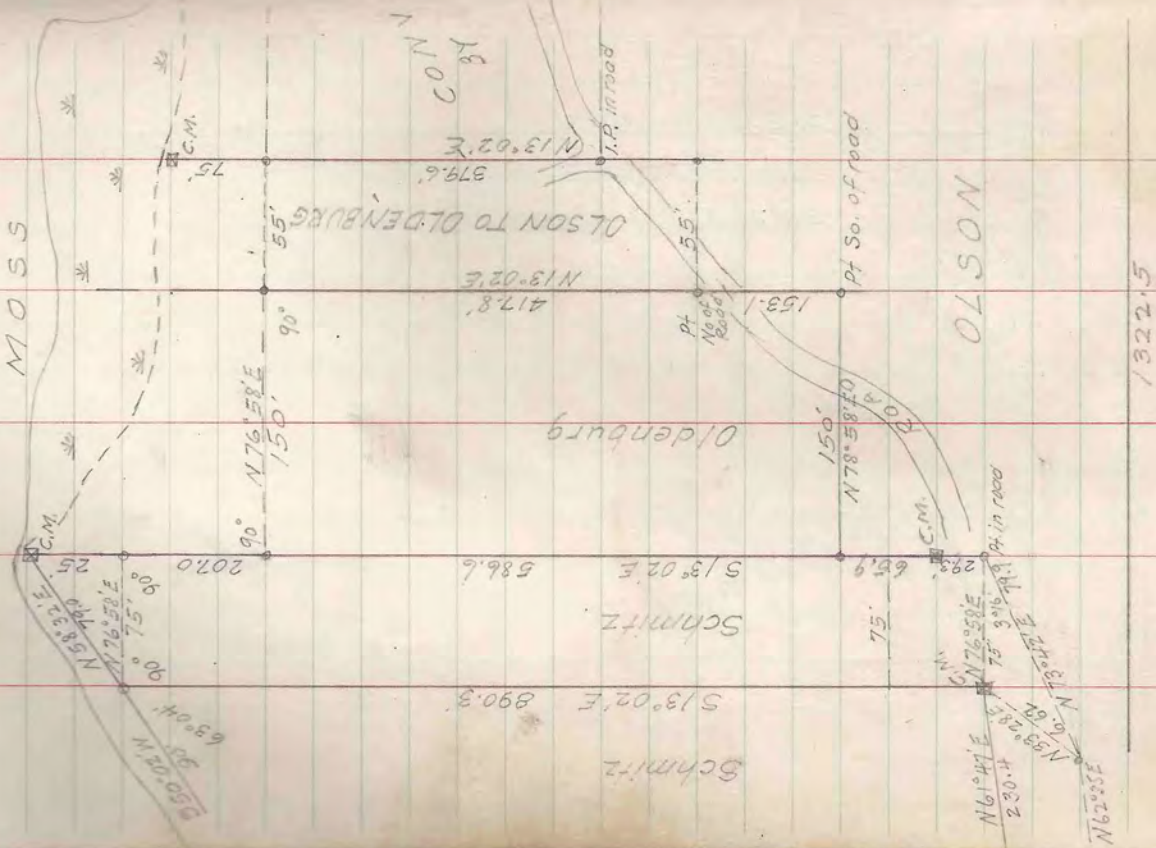
70 "

72 70 "



T40N-R5E SEC. 8 SE 1/4 - SE 1/4

Oct. 14 to 27 '49 Bob Herrmann Ass't.

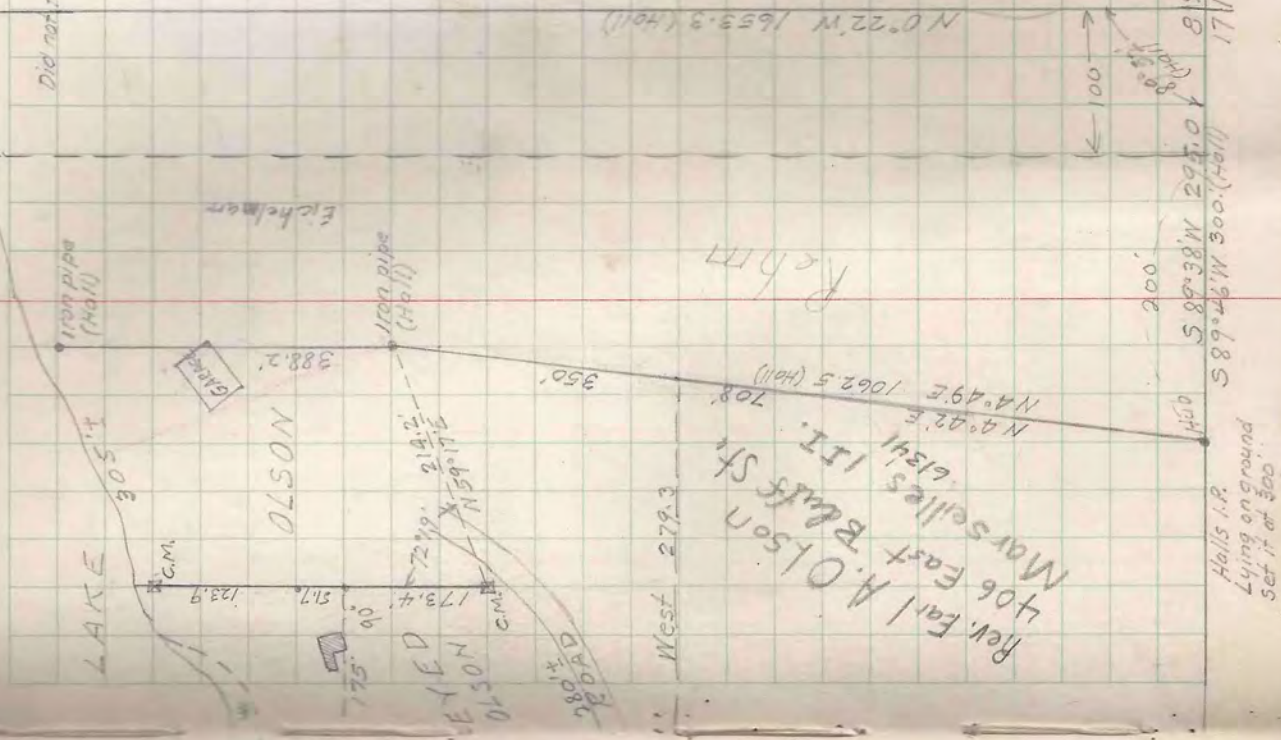


65

Did not find N.C.

123
174
345

N 0° 22' W 1653.3 (Holl)



Halls I.R.
Lying on ground
set it at 300.

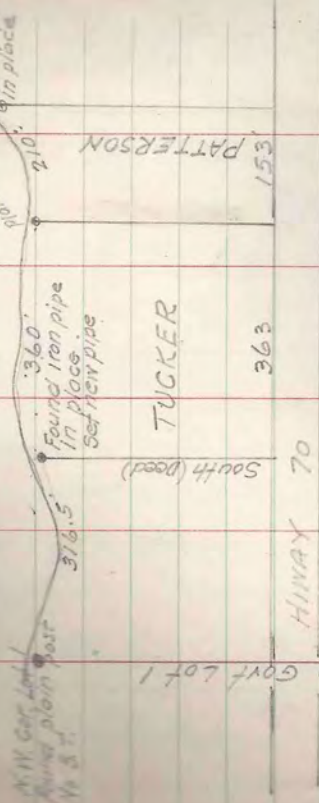
Rev. Earl A. Olson
406 East Bals St.
Marselles I.T.

819 U.S.G.L.O.
1716

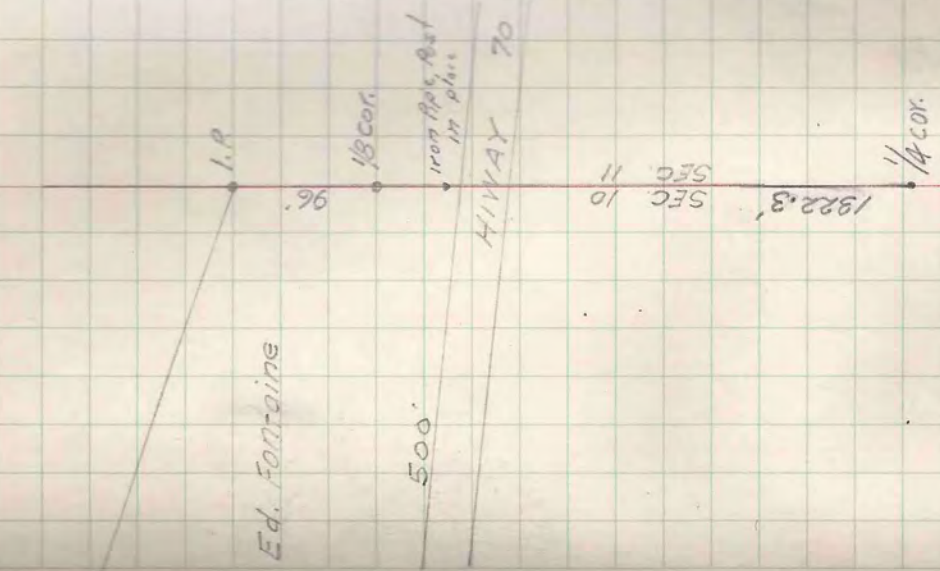
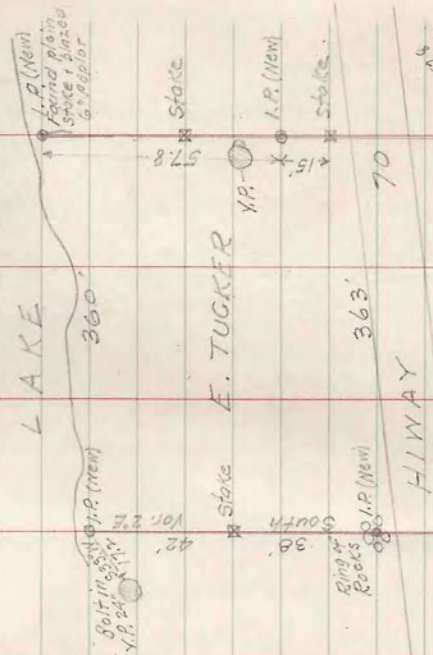
T39N-R5E SEC. 10 LOT 1

Nov. 9, 1949

SHISHIBOGAMA LAKE



Approx. West line Govt Lot 1



Ed. Fontaine

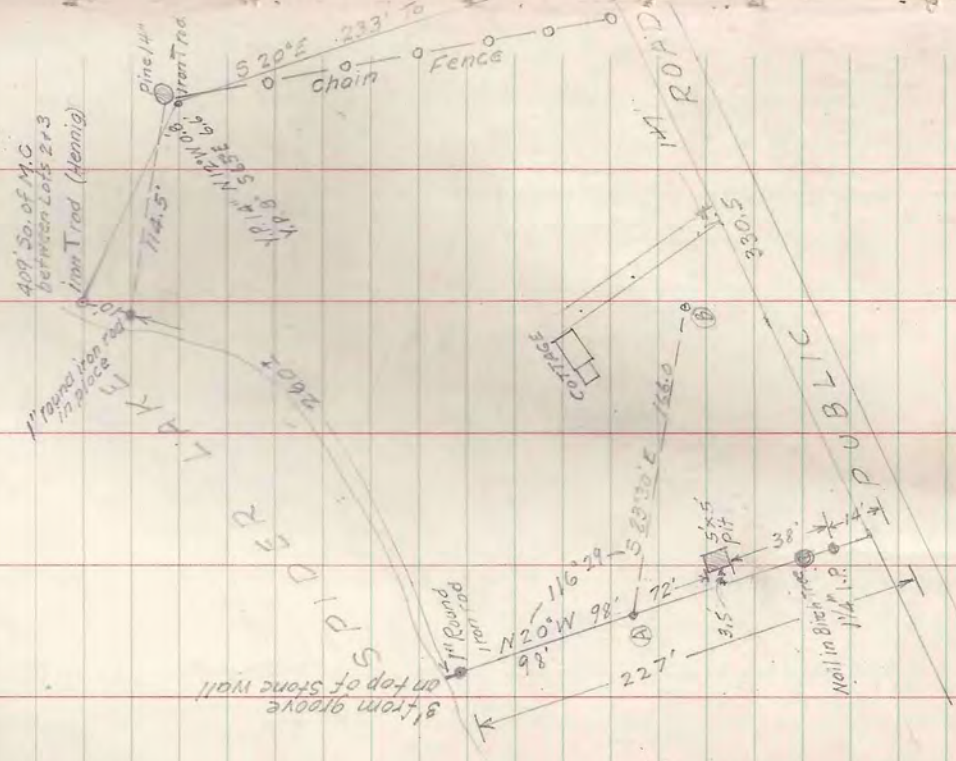
C. E. Childers

T42N-R5E SEC. 13 LOT 3

For C. E. Childers

230 East Cermak Blvd. Chicago 16 Ill.

NOV. 10 '49



LEVELS

Sta.	Iron Rod	B.S.	F.S.	H.I.	Angle	Dist	Rod	E.I.
		Datum: - Iron Rod at NW corner = 00						
								0.0
T.P. 1		12.02	25	12.02				12.77
T.P. 2		11.15	00	23.92				23.92
(A)		4.63	2.81 6.70	28.53				25.72 19.04
Road		4.44		23.48	A+B (Frank)			
"					195.00'	48'	5.24'	18.23
"					1107.0'	30'	7.8	15.7
"					78.50'	85'	7.2	16.2
"					77.10'	60'	6.5	17.0
"					52.00'	55'	5.8	17.7
"					39.15'	60	5.2	18.3
"					18.20'	75	6.5	17.0
"					0.30'	65	7.8	16.7
"					0.00'	120	8.0	23.5
"					11.30'	110	8.8	19.7
"					350.15'	54	5.8	17.7
"					340.45'	70'	5.2	18.2
"					332.45'	65	4.2	19.3
"					312.45'	88	4.8	23.2
"					313.50'	65	4.2	17.2
"					16.40'	34	7.4	16.1
"					52.20'	78	8.8	14.7
"					134.30'	90	13.9	9.6
"					109.30'	108	16.0	7.5
"					97.10'	115'	13.0	10.5
"					97.20'	100'	13.0	10.5
"					87.40'	108'	13.0	10.5
"					72.10'	122'	13.0	10.5
"					81.30'	150'	13.0	10.5
"					92.40'	175'	12.7	10.8
"					102.50'	120	13.5	10.2
"					74.10'	110	10.8	12.7

Certificate

J. T. F. Kovachek Surveyor

Menocqua Wis do hereby

certify that since the date of

the Survey, the chain fence

shown shown has been moved eastward

to the true easterly boundary of

the property Surveyed

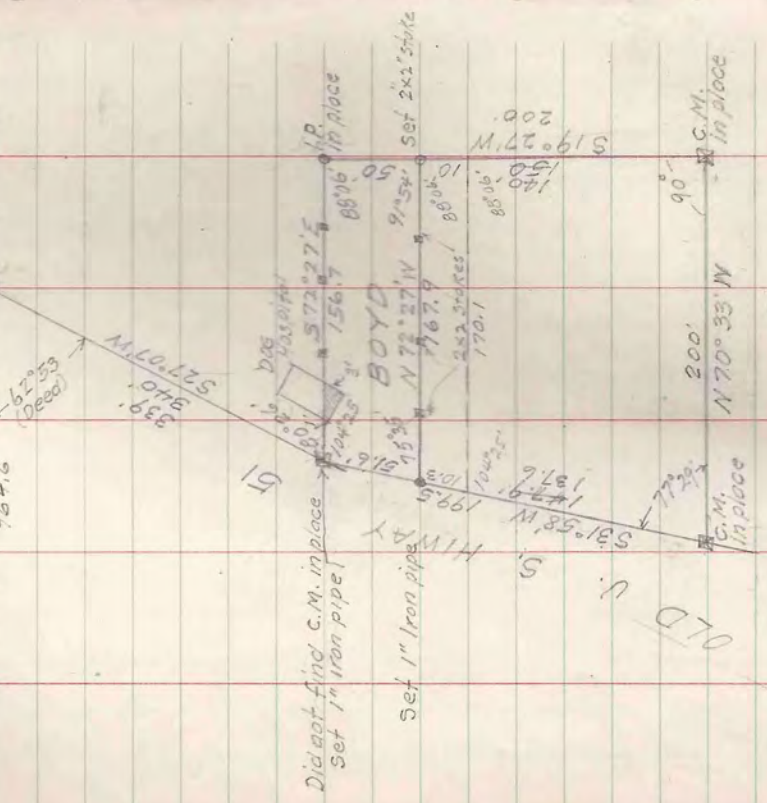
May 7 1951

Attest
Marilyn Conway, Clerk
Chicago 4 Ill.

T 39N - R 6E SEC 11 NW-NE

Nov. 19, 1949

1/4 West 9646 North Line Sec. 11

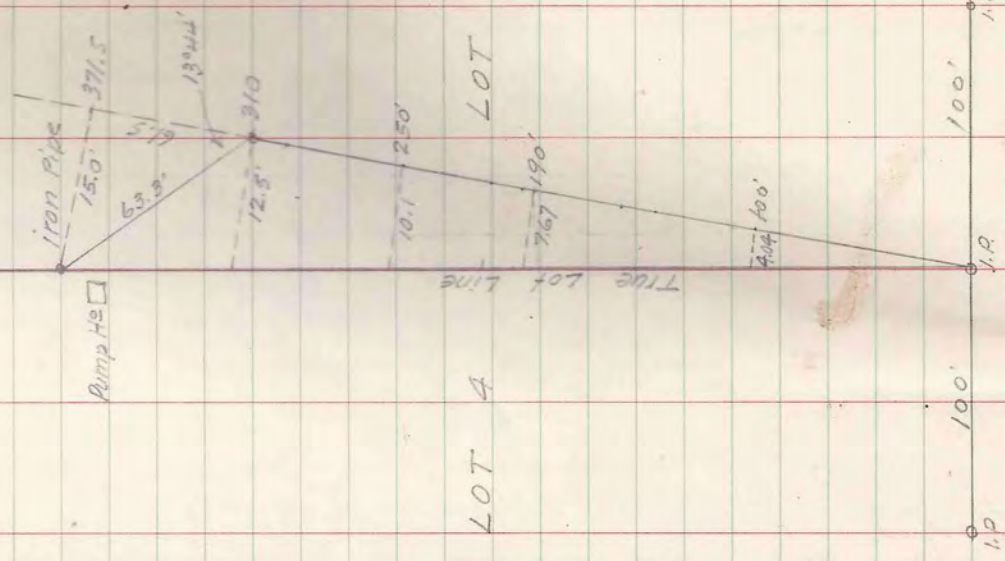


	N	S	E	W
S 72° 27' E	156.7	47.25	149.41	
S 19° 27' N	200.0	188.59		66.60
N 70° 33' W	200.0			188.59
N 31° 58' E	199.5	169.25	105.62	
	235.85	235.84	255.03	255.19
S 72° 27' E	156.7	47.25	149.41	
S 19° 27' N	50.0	47.15		16.65
N 72° 27' W	167.9	50.63		160.08
N 31° 58' E	51.6	43.78	27.31	
	944.1	94.40	176.72	176.73

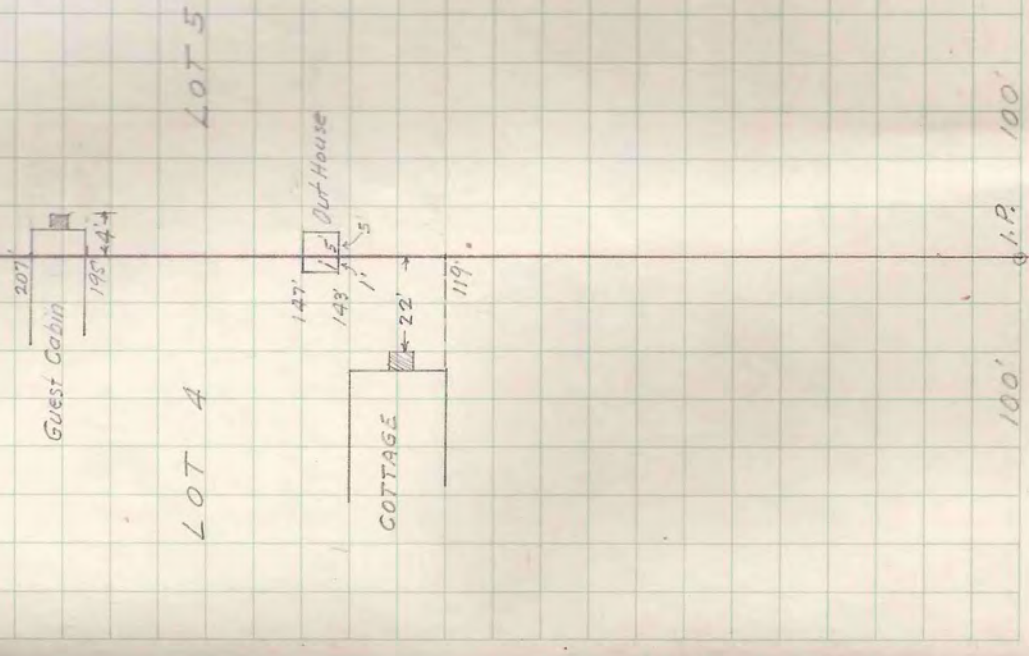
T40N-R5E SEC.23 LOT 2

Dec. 3, 1949

FENCE LAKE



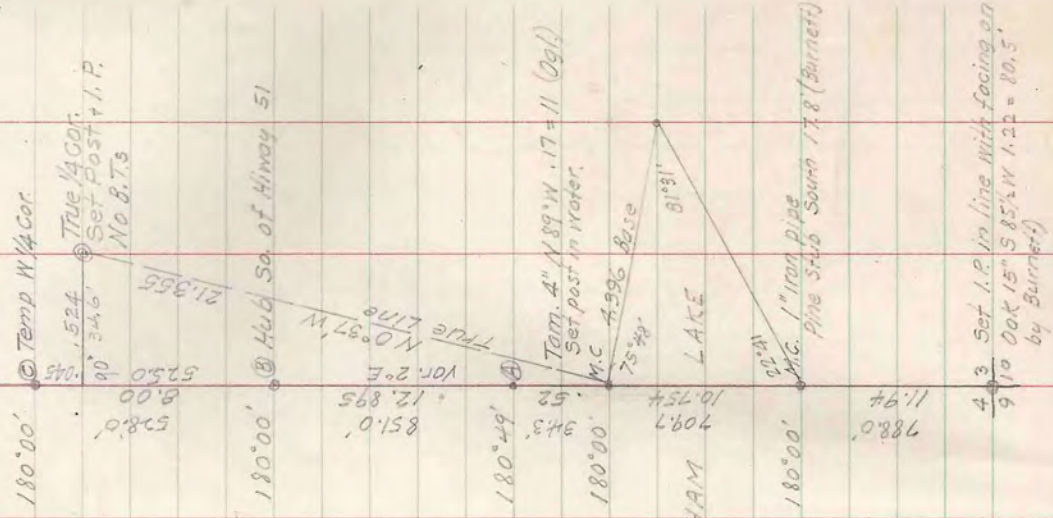
G. F. Walliser



TAIN-R6E SEC. 3 LOT 5
 SEC. 4 LOT 3

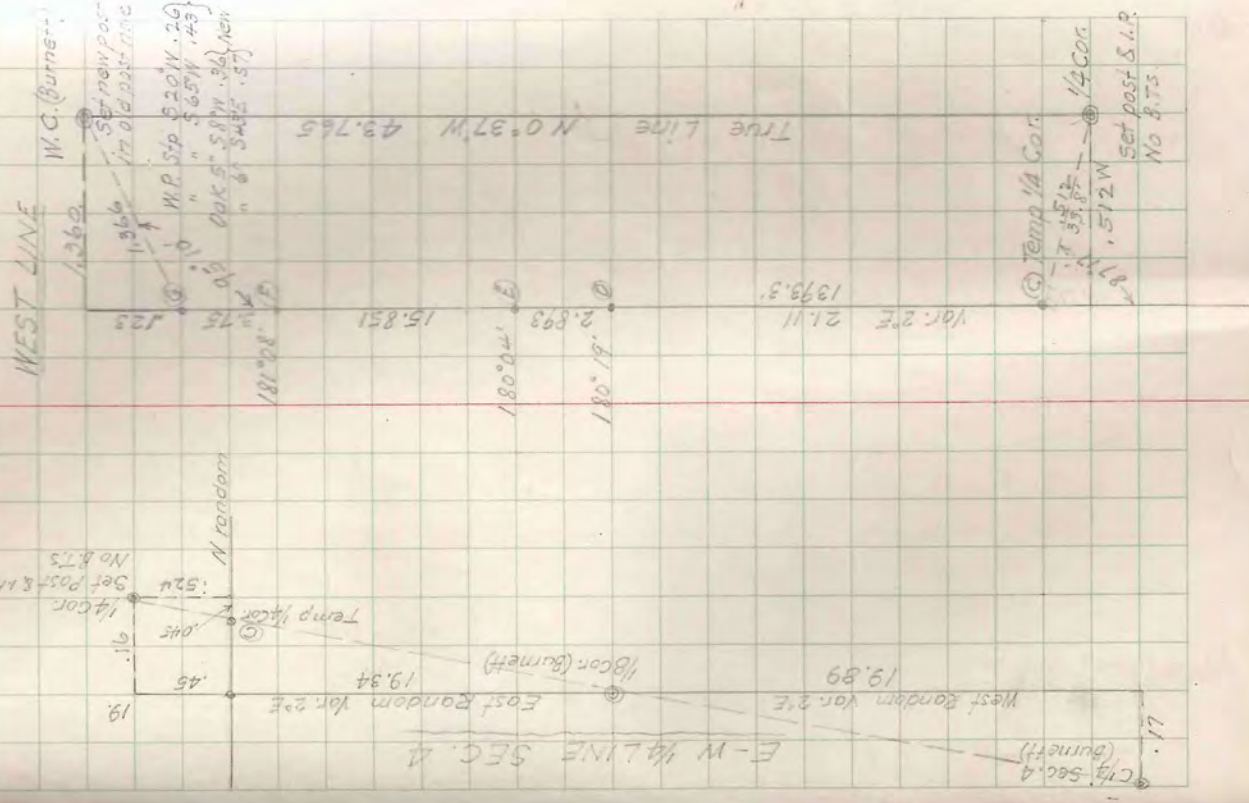
WEST LINE

See Book VIII Pg. 29



MIDDLE GRESHAM LAKE

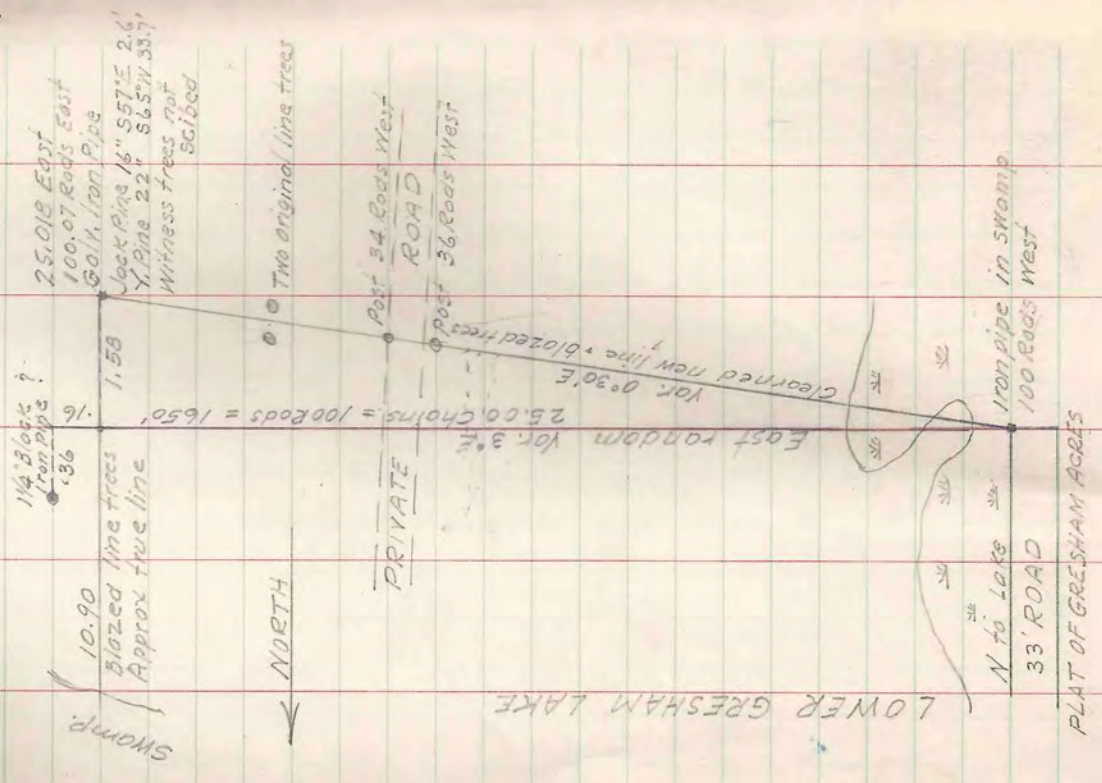
4.3 Set I.P. in line with facing on
 9 1/2 Oak 15" S 85 1/2 W 1.22 = 20.5
 by Burnett



Temp 1/4 Cor.
 14 Cor.
 Set post S.I.P.
 No B.T.s.

Magner

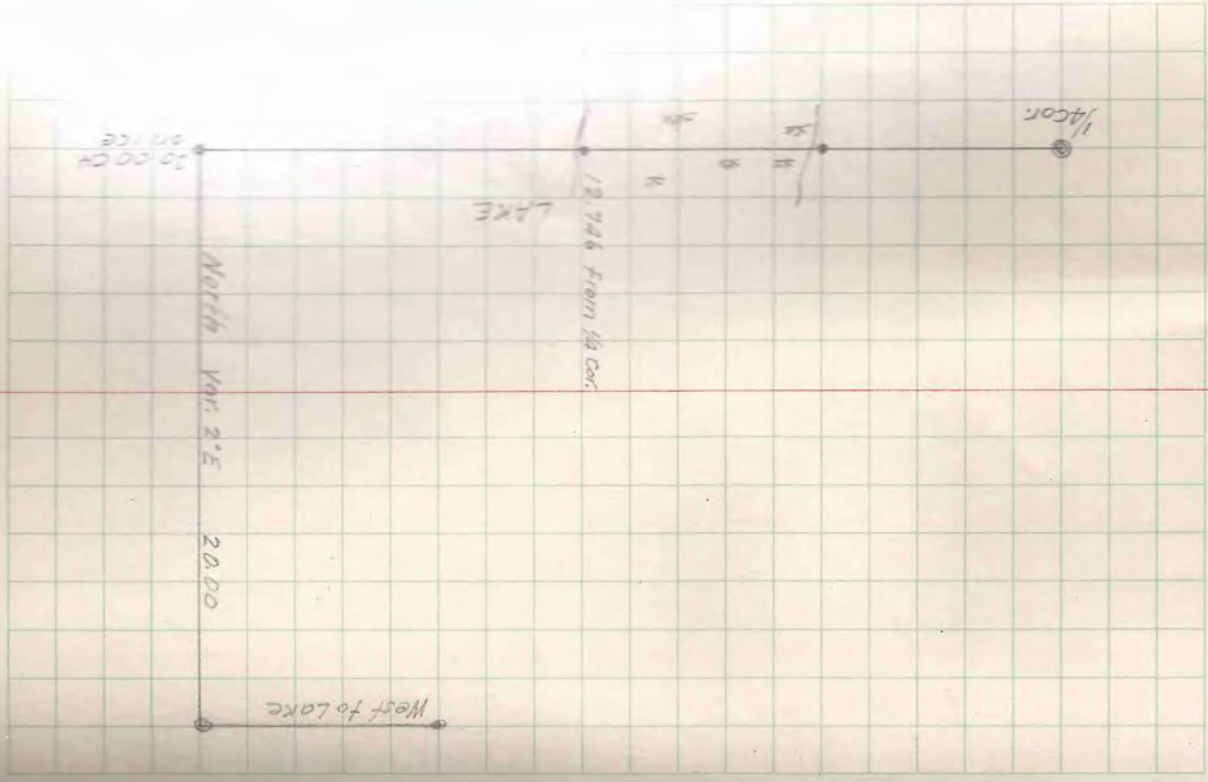
TAIN - R6E SEC. 9 LOT 7
 For D. J. Magner
 8004 Green St. Chicago 20



Offsets from Random to True Line

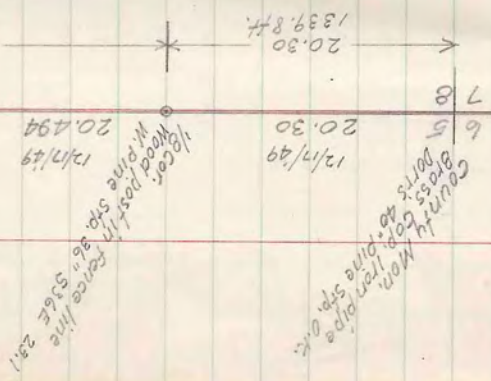
Dist East	Offset South
2.00 Ch	12.68
4 "	25.06
6 "	38.04
8 "	50.72
10 "	63.40
12 "	76.08
14 "	88.76
16 "	101.44
18 "	114.12
20 "	126.80
22 "	139.48
24 "	152.16
25 "	158.50

LOWER GRESHAM LAKE



23.955
1591.0 ft.

(See Book VIII Pg 1.)



County Mon
Boys 40
Doris 40
12/17/49
20.30
1339.8 ft.

Pete Anderson

1