

790N-06E
 SEC. 10 LOT 4 SEC. 15 LOT 2
 Traverston Subdivision
 Upper Moushshine Lake
 Field work done in May + June 1946
 LAKE SHORE TRAVERSE

Sta.	F.S.	Angle	Bearing	Dist
1/2 cor.	M.C. Lot 4 "A"	0° 0'	South	710.9
	"B"	"	"	48.8
	M.C. Sec. 9 + 10	"	"	418.0
North	M.C. Base Line 1/9	38° 51'	N 38° 51' E	22.3
M.C.	9/9	104° 29'	S 36° 46' E	87.3
	19/8	176° 40'	S 40° 00' E	100.0
	18/17	192° 13'	S 27° 47' E	100.0
	17/16	193° 59'	S 13° 48' E	100.0
	16/15	180° 00'	S 13° 48' E	100.0
	15/14	196° 21'	S 2° 33' W	100.0
	14/13	180° 00'	S 2° 33' W	100.0
	13/12	185° 26'	S 7° 59' W	100.0
	12/11	180° 00'	S 7° 59' W	100.0
	11/10	169° 33'	S 2° 28' E	100.0
	10/9	157° 59'	S 24° 29' E	100.0
	9/8	176° 00'	S 28° 29' E	100.0
	8/7	180° 00'	S 28° 29' E	100.0
	7/6	180° 00'	S 28° 29' E	100.0
	6/5	196° 44'	S 11° 45' E	100.0
	5/4			

Sto.	F.S.	Angle	Bearing	Dist.
96	4/3	199° 27'	S 7° 42' W	100.0
97	3/2	196° 19'	S 24° 01' W	100.0
98	2/1	155° 59'	South	100.0
99	1/0(N)	180° 00'	"	99.8
100	9/1(O)	88° 48'	N 88° 48' E	383.5
101	1/2	89° 05'	N 2° 07' W	91.83
102	2/3	180° 00'	N 2° 07' W	100.07
103	3/4(P)	180° 00'	N 2° 07' W	91.40
104	4/5	188° 58'	N 6° 51' E	99.80
105	5/6	180°	N 6° 51' E	98.6
106	6/7(O)	180°	N 6° 51' E	88.5
107	7/8	163° 03'	N 10° 06' W	89.3
108	8/9(O)	180°	N 10° 06' W	89.3
109	9/10	172° 21'	N 17° 45' W	95.5
110	10/11	180°	N 17° 45' W	104.9
111	11/12	180°	N 17° 45' W	103.9
112	12/13	195° 28'	N 2° 17' W	99.1
113	13/14(O)	180°	N 2° 17' W	99.8
114	14/15	160° 08'	N 22° 09' W	128.4
115	15/16	180°	N 22° 09' W	128.4
116	16/17	172° 54'	N 29° 15' W	128.4
117	17/18	180°	N 29° 15' W	147.0
118	18/19	178° 30'	N 30° 45' W	166.0
119	19/0	159° 35'	N 51° 10' W	166.5
	M.C.	90° 01'	S 38° 51' W	274.4

(Computed Coordinates in Ring Binder)

ROAD TRAVERSE

Sta.	Sta. No.	R.S.	Angle	Beer	Dist
A	1000	X	88°48'	N88°48'E	392.8
B	1000	J	89°50'	N1°22'W	316.30
C	1000	I	189°40'	N8°18'E	230.20
D	1000	H	164°48'	N6°54'W	161.10
E	1000	G	167°44'	N19°10'W	318.20
F	1000	F	196°10'	N3°00'W	265.10
G	1000	E	158°22'	N24°38'W	364.10
H	1000	D	171°17'	N33°21'W	312.10
I	1000	C	159°13'	N54°08'W	151.20
J	1000	C	18/19	S23°24'W	280.98
K	1000	C	19/0	N32°40'W	87.30
L	1000	M.C.		S38°51'W	22.3

July 1947 Change made in back line
of Lots 14 to 19 incl
See Book V page 77

COORDINATES

N	E	W	SOUTH	EAST
118	392.73		2211.12	735.92
1000		7.58	1894.91	728.34
1000	33.22		1667.12	761.56
1000		19.39	1507.20	742.17
1000		104.49	1206.66	637.68
1000		13.94	941.92	623.74
1000		151.82	610.97	471.92
1000		171.63	350.28	300.29
1000		122.53	261.69	177.76
1000		111.58	519.56	66.18
1000		52.13	449.54	14.05
1000		13.99	466.91	.06

DEFINING TRUE CORNERS

Stn	F.S.	Angle	Bear.	Dist.
K	J	89°50'	N1°22'W	316.20
K	O			0.0
	1/2			91.65
	2/3			191.68
	3/4 (P)			283.05
K	I	189°40'	N8°18'E	230.02
	4/5			66.55
	5/6			165.48
J	H	164°48'	N6°54'W	161.01
	6/7 (Q)			24.02
	7/8			112.57
I	G	167°44'	N19°10'W	318.02
	8/9 (R)			42.06
	9/10			138.37
	10/11			244.14
H	F	196°10'	N3°00'W	265.01
	11/12 (S)			29.14
	12/13			128.30
	13/14 (T)			228.35

(14/15 to 19/6 no offsets)

Angle	Bear	Dist
91°22'	West	9.3
91°22'	"	10.52
91°22'	"	11.83
91°22'	"	13.02
81°42'	"	9.90
81°42'	"	12.42
96°54'	"	8.31
96°54'	"	13.33
109°10'	"	9.32
109°10'	"	6.82
109°10'	"	4.07
93°00'		9.91
93°00'		8.67
93°00'		7.42

E L E

SHORE BASE LINE

No.	A.B.	B.M.	H.I.	F.S.	Elev.
W.C.B.	4.83	104.83			100.00
T.R. 1	5.50	109.58		.75	104.08
T.R. 2	2.28	108.50		3.36	106.22
M.C.				8.81	99.69
				3.50	105.00
18/19	3.96	109.15		3.31	105.19
17/18				3.65	105.50
16/17	4.53	110.03		3.19	106.84
15/16				7.15	102.88
14/15				2.81	107.22
Sec. Ln.	1.85	109.07			
13/14				2.40	106.67
12/13				4.04	105.03
11/12	3.49	111.13		1.43	107.64
10/11				2.86	108.27
9/10				4.14	106.99
				6.60	104.53

V A T I O N S

No.	B.S.	H.I.	F.S.	Elev.
1/4	4.17	108.70	4.55	104.15
2/4			4.82	103.88
3/4			6.02	102.68
4/4			6.88	101.82
4/5	2.45	104.27	4.34	99.93
3/4			.50	103.77
4/5	7.06	110.83	4.54	106.39
T.P.			2.37	108.46
1/2	3.59	112.05	2.71	109.34
0/1			10.24	101.81
M.C. Pipe			11.15	100.90
T.P.			.61	111.44
T.P.	12.15	123.59	.76	122.83
Neil in Ste.	4.38	127.21	1.85	125.46
Grd.			2.85	124.46
T.P.			.28	126.92
"X"	4.16	131.08	8.64	122.44

ROAD LINE

Sta.	B.S.	H.I.	F.S	Elev.
B.M.	W.G.D. datum			100.00
Lake	4.88	104.88		
T.R. 1	11.31	115.40	8.95	95.93
			.79	104.09
T.R. 2			4.58	110.82
			.70	114.70
"A"	10.78	125.48	9.05	116.43
T.R. 3			.11	125.37
T.R. 4 "B"	11.58	136.95	1.13	135.82
	6.90	142.72	4.50	138.22
"C"			2.48	140.24
T.R. 5 "D"	5.29	145.53	2.10	143.43
T.R. 6 E	10.40	153.83	4.06	149.77
"F"			5.66	148.17
T.R. 7	9.58	157.75	4.44	153.31
"H"			4.23	153.52
T.R. 8 "I"				

✓

Sta.	B.S.	H.I.	F.S.	Elev.
"J"	.36	153.88	9.46	144.42
T.R. 9			12.45	141.43
T.R. 10	.07	141.50	11.05	130.45
"K"	.00	130.45	787.	122.58 To check
				122.44

Stadia Traverse and Levels

Sta No	Dist	Mag. Bear.	Elev.
N - 1	83	N 8° W	122.44
1 - 2	110'	N 60° W	114.94
2 - 3	50'	S 71½° W	107.60
3 - 4	157'	N 81½° W	102.4
4 - 5	168'	N 39° W	101.8
5 - 6	60'	N 75° W	108.7
6 - 7	26'	N 28° W	111.6
7 - 8	51'	N 55½° E	113.1
8 - 9	40'	N 44½° E	113.2
9 - 10	27'	N 29½° E	125.6
11 - 11	44'	N 23½° E	
11 - 12	29'	N 29½° E	137.23
12 - 13	30'	N 60° E	
13 - 14	70'	N 31° E	148.20
14 - 15	81'	N 20½° E	
15 - I	20'	S 2¼° E	153.83
I - 16	142'	N 46½° W	149.18
16 - 17	43'	N 40° W	
17 - 18	117'	S 38½° W	138.02
17 - 19	100'	S 78° W	144.42
17 - 20	80'	N 45° W	146.47
- 21	140'	N 45° W	149.21

Sta No	Dist	Mag. Bear.	Elev.
21 - 22	61'	N 58½° W	—
22 - 23	73'	S 9° W	149.48
23 - 24	130'	S 76½° W	145.53
24 - 25	200'	N 79° W	151.13
25 - 26	175'	N 42° W	147.93
26 - 27	82'	N 82½° W	—
27 - 28	80'	S 3¼° W	147.78
28 - 29	42'	N 3¼° E	—
29 - 30	51'	S 51½° W	139.25
29 - 31	145'	North	132.45
31 - 32	36'	N 11½° W	—
32 - 33	70'	S 60° E	128.64
32 - 34	42'	N 60° E	121.25
34 - 35	34'	N 32° W	—
35 - 36	40'	N 52° E	112.02
35 - 37	95'	N 76° W	112.57
37 - 38	20'	S 57° W	—
Lot 14/15	8'	S 5° W	108.38
Lake			96.68
14/15 - 39	70'	N 26¾° E	—
39 - 40	21'	N 32° E	119.63
40 - 41	28'	N 6° E	—
41 - 42	25'	N 17° E	116.97
41 - 43	58'	N 13½° E	122.68

Sta No	Dist	Mag. Bear.	Elev.
65-66	110'	N 33° W	—
66-67	82'	N 15° E	131.9
68	152'	N 11° W	126.1
68-69	38'	N 71° E	—
69-8	46'	S 40° E	135.1

Sta No	Dist	Mag. Bear.	Elev.
43-44	34'	N 19 1/2° E	—
44-45	31'	N	134.19
45-46	45'	S 22° W	—
46-47	44'	S 25° W	131.30
48	25'	Ravine N 72° W	128.00
49	69'	S 69° E	136.99
49-50	55'	S 66° E	—
50-51	55'	S 78° W	136.68
52	53'	S 10° E	133.78
53	96'	S 34° E	130.28
53-54	72'	S 64° E	—
54-55	42'	S 63° W	128.41
56	72'	S 51° W	129.71
57	55'	N 13° E	134.65
57-58	81'	N 30° W	—
58-58"	50'	N 28° W	144.52
Road of Ravine	39'	S 33° E	136.51
Bottom "			129.4
E-59	149'	N 34° W	—
59-60	69'	S 49° W	134.51
61	135'	S 73 1/2° W	134.41
61-62	N Side Rd 45'	S 72° W	—
62-63	Ravine 62'	S 73 1/2° E	127.59
64	Ravine 32'	S 3° E	123.20
65	142'	N 40° W	125.1

Gus Eipel

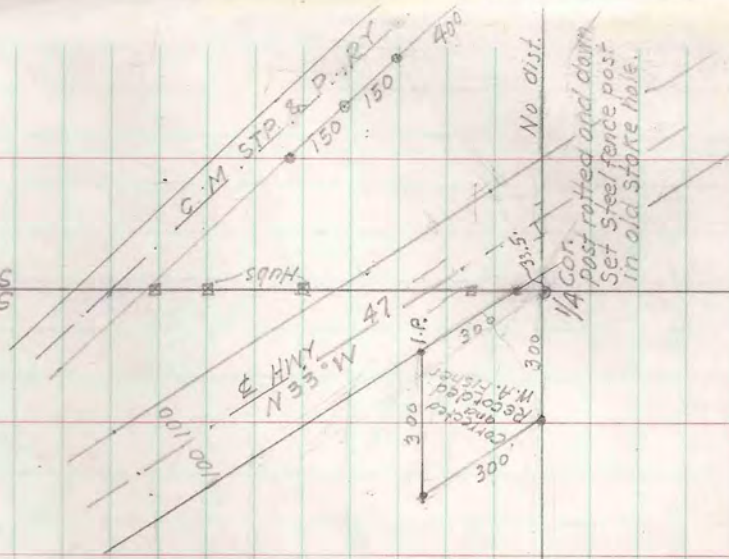
May 4 '50

T 39N-RGE Sec. 12 SE-NE

1 1/2 iron pipe
12 7 in pavement
NEW B.T.
Jack Pine 12" N40E + 74
" " 13" N22W 310

Var 3° E
NODISH

SEC. 12
SEC. 7



SEC. 12

SEC. 7

TOWN LINE

HWY 47 R.O.W. Line

54'

1/4 COR.

Highway R.O.W. Post

33.5'

C.M. STP & P. RT

M. E. H. N 33° W

100 100

150

150

400

No dist.

1/4 Cor.

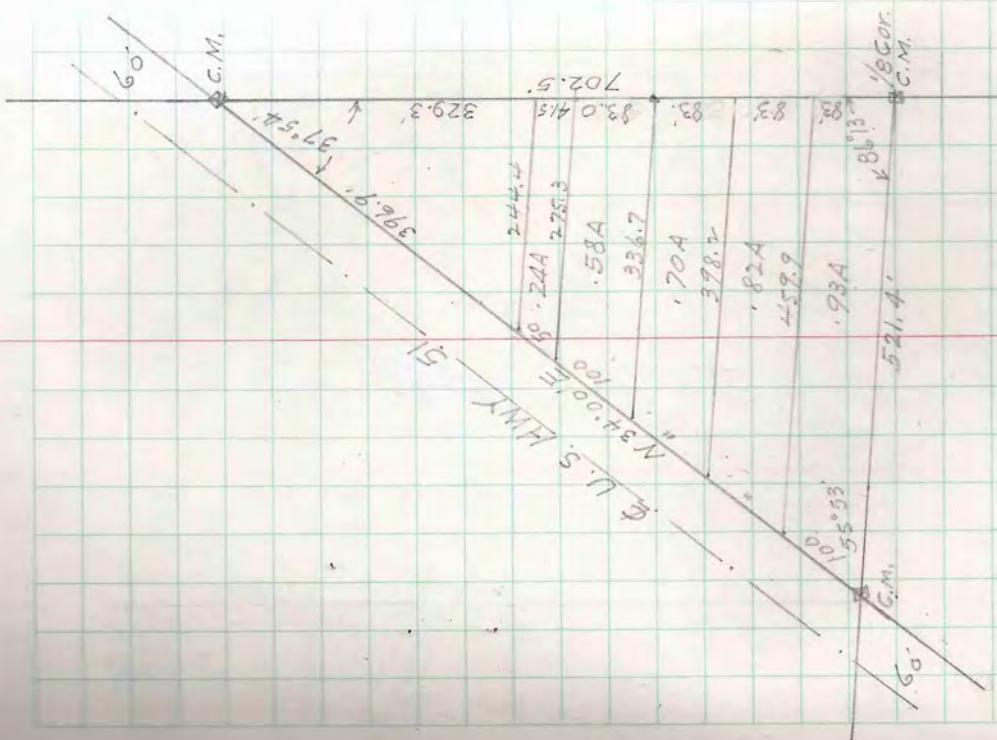
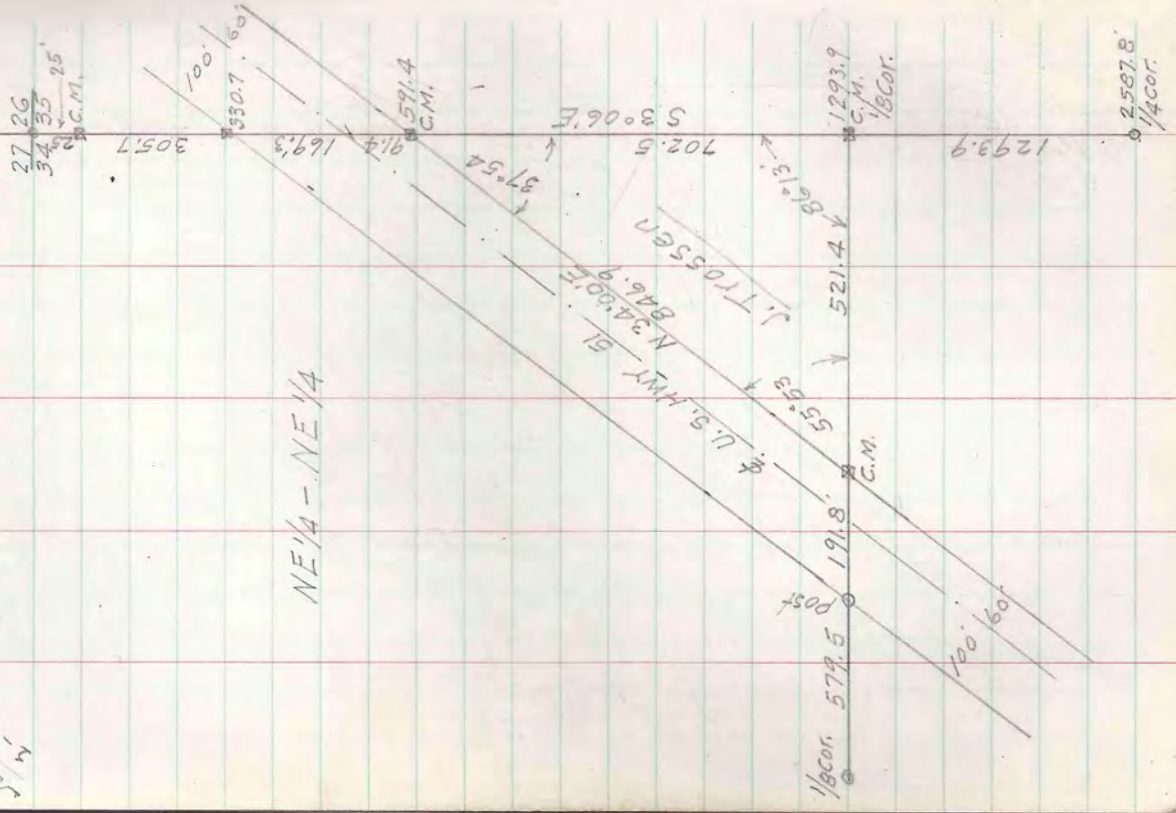
post rotted and down Set Steel fence post in old stake hole.

H.A. Fisher Recor'ded 300 300 300

Hubs

Joe Trossen
 2-8-23
 T 39N-RGE SEC. 34
 May 8 '50

NE 1/4 - NE 1/4

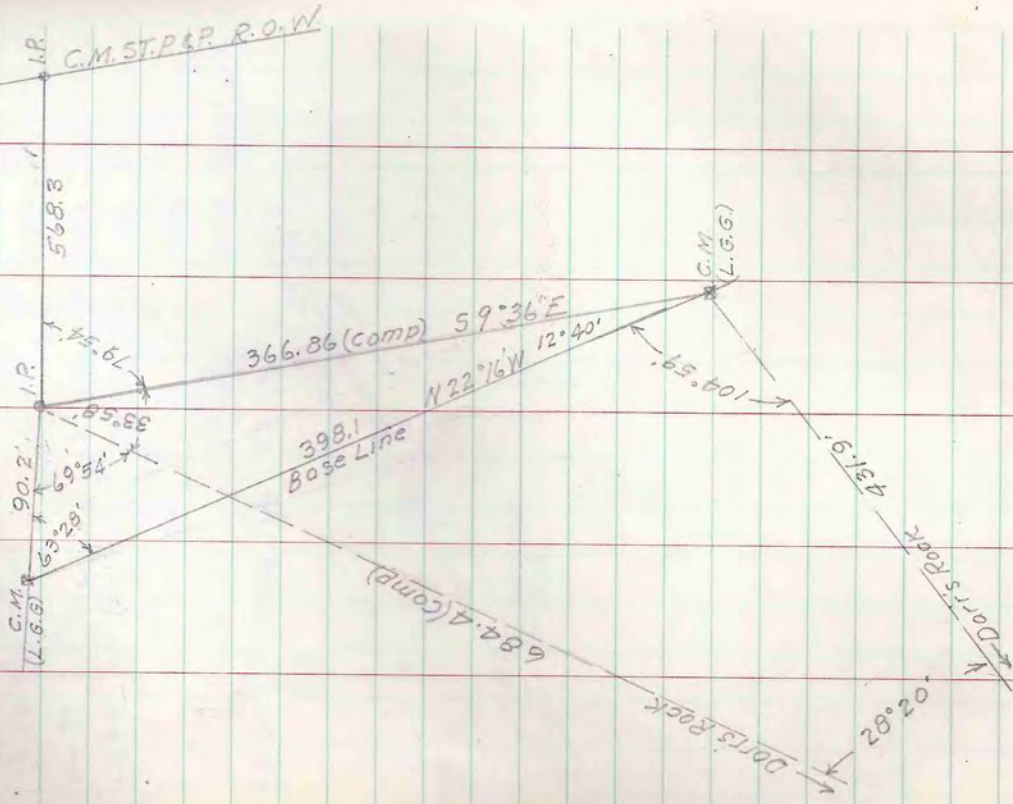


T39N-R6E SEC. 11 LOT. 6

May 23 '50

For Eugene Olszewski

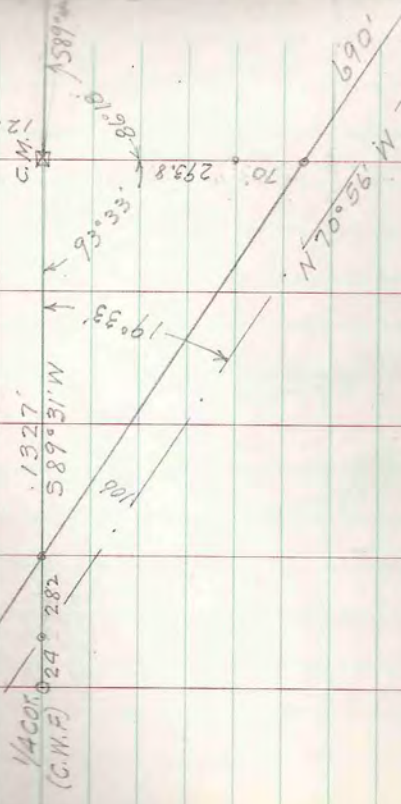
Eugene Olszewski



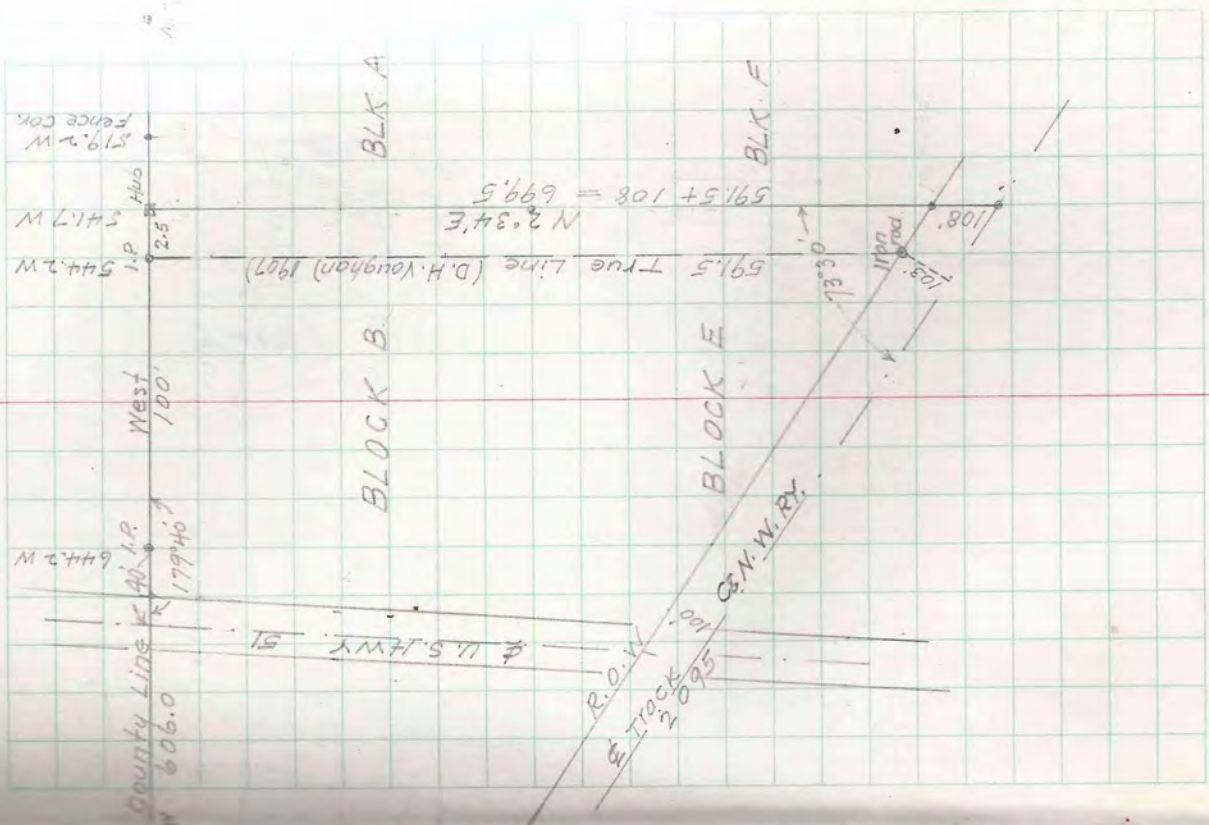
VILLAGE OF WOODRUFF

May 12, '50

Carl Riedel



	N	S	E	W
West	102.5			102.5
S 89° 40' W	606.0	3.52		606.0
S 70° 56' W	1303.0	11.0		1303.0
N 2° 34' E	699.5		31.3	
	698.8	698.9	2011.4	2011.5



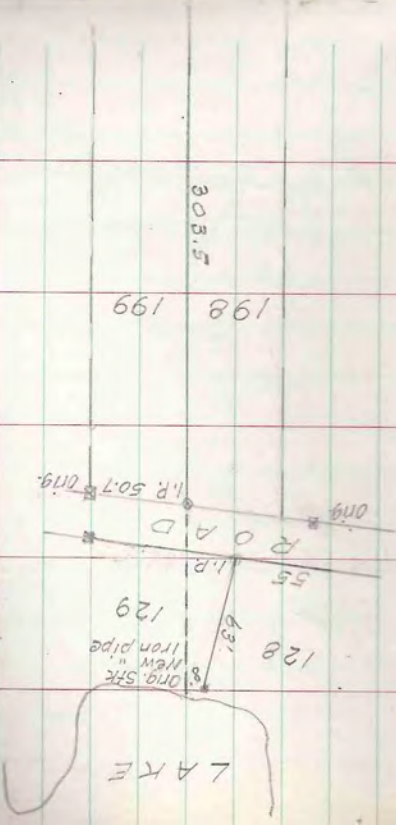
T40N-R5E SEC. 19

KETEMAUG LODGE

BIG CRAWLING STONE LAKE

May

Bengal (not AGT)
Russell G. Hirth
Bar 14, Loc 20, Blambeau



198 199

303.5

129

431

L.A.K.E.

ORIG. SHK

New iron pipe

I.R.

55

ROAD

I.R. 50.7

ORIG.

198 199

222

176

25'

90'

106'

25'

25'

187.5'

ROAD

25'

124.35'

ROAD

25'

ORIG.

ORIG.

ORIG.

Missing

746'

ORIG.

ORIG.

ORIG.

ORIG.

ORIG.

ORIG.

ORIG.

ORIG.

ORIG.

ORIG.

ORIG.

ORIG.

ORIG.

ORIG.

ORIG.

ORIG.

ORIG.

ORIG.

ORIG.

ORIG.

ORIG.

ORIG.

ORIG.

ORIG.

ORIG.

ORIG.

ORIG.

ORIG.

ORIG.

ORIG.

ORIG.

ORIG.

ORIG.

ROAD

ROAD

ROAD

ROAD

ROAD

ROAD

ROAD

ROAD

ROAD

ROAD

ROAD

ROAD

ROAD

ROAD

ROAD

ROAD

ROAD

ROAD

ROAD

ROAD

ROAD

ROAD

ROAD

ROAD

ROAD

ROAD

ROAD

ROAD

ROAD

ROAD

ROAD

ROAD

ROAD

ROAD

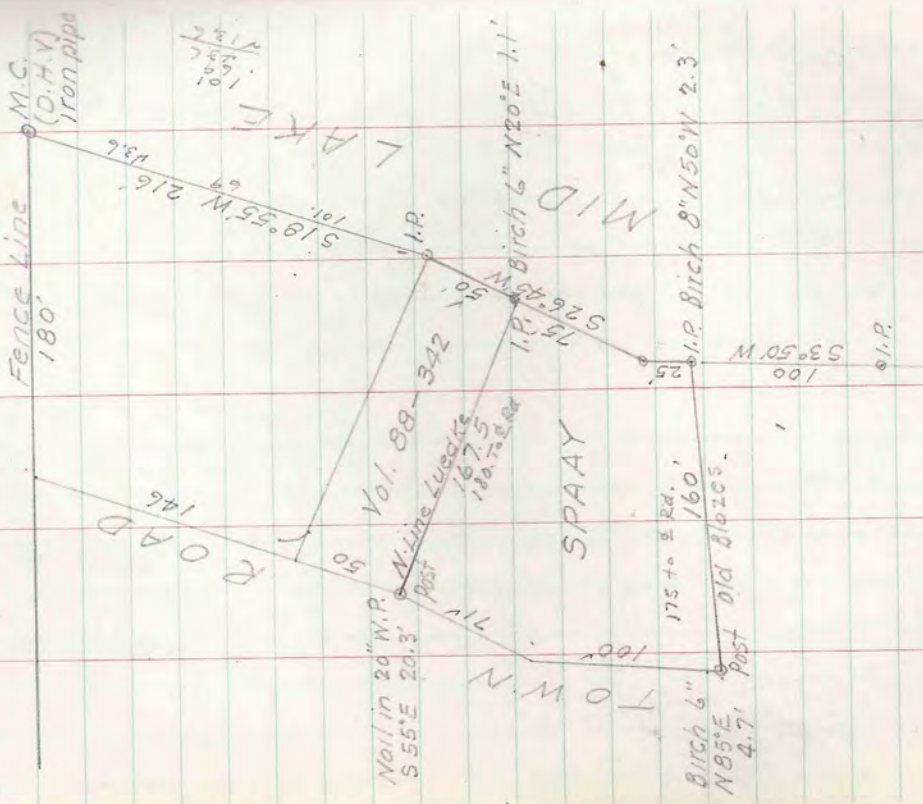
ROAD

ROAD

~~SPAAY~~

T 39N-R7E SEC. 19 LOT 5

May 29 '50



T38N-R6E SEC 11 LOT 3

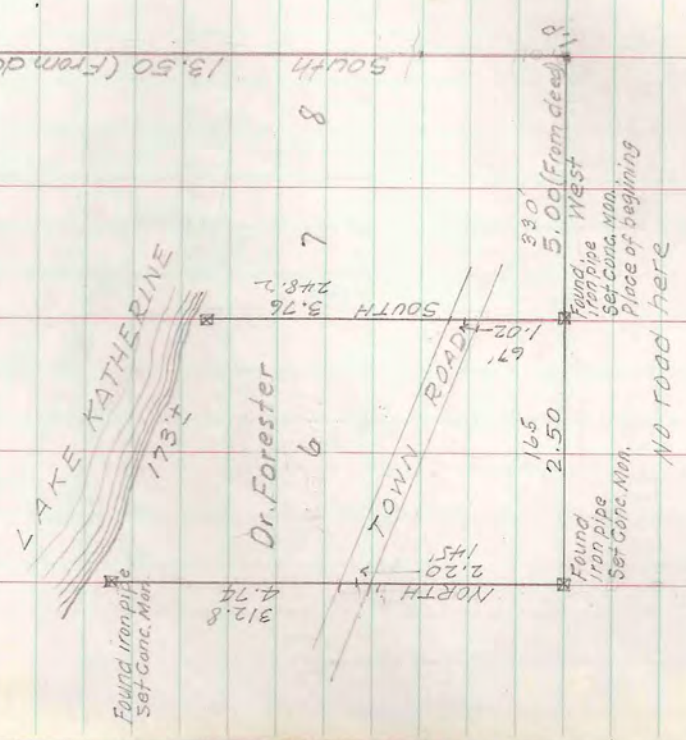
LAKE KATHERINE

June 1, 1950

Sec. 2 @ 1/4 cor.
Sec. 11

Dr. Forester
4-N-23
E.W. Hunter

574
2866
2891



A.C. COPE

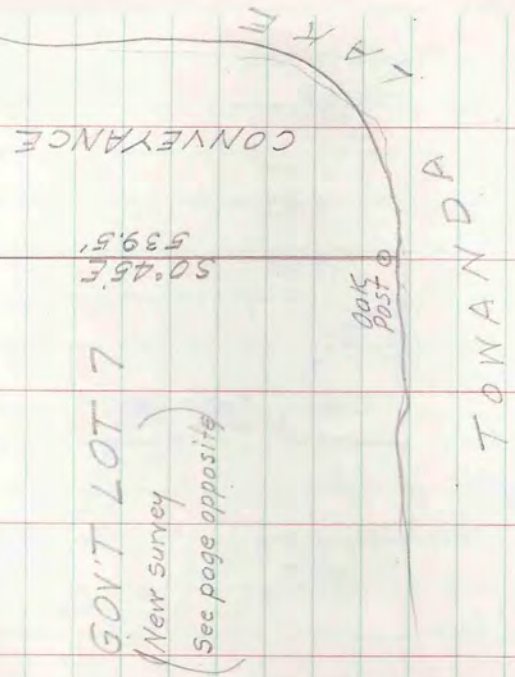
T40N-R6E SEC. 23 LOT 7

June 6 50

C. Mon.
 15/14 Old Line blazes
 22/23 N 89°15'E 581.5

Did not find original section post

13527 7000' Post

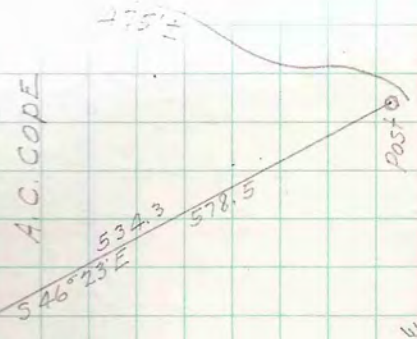


GOV'T LOT 7
 (New survey)
 (See page opposite)

Survey of June 6, nullified
 New survey Aug. 21, 1950

11/14
 W 89°15'E 547.9

A.C. COPE



T 39N-R6E SEC. 4

N.M. COB
1-C-19

June 8, - June 21,
32 33 Conc.
54°33'
2.50
4.06 = 268'
Assumed South

W 1/4 Cor. Conc. Man.

991.3
320.8
4.86
M.C.
15.02
50°43'E
43.82 = 2892'

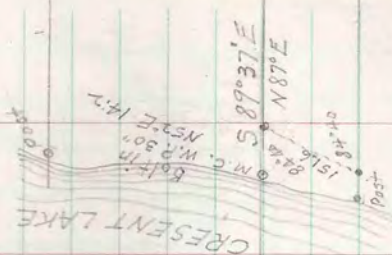
M.C.
Theor.
1/8 Cor.

505.5
766
M.C.
50°43'E

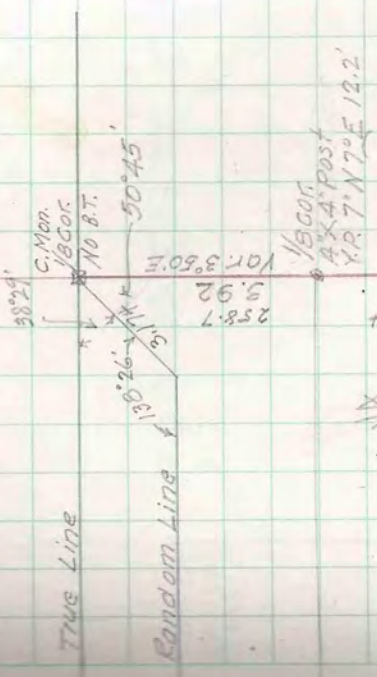
12.22
490.4
806.5
54 Conc.
Mon.
5°45'

S 88°40'E
19.92
1314.7
15.984

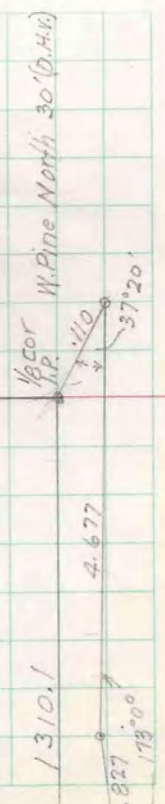
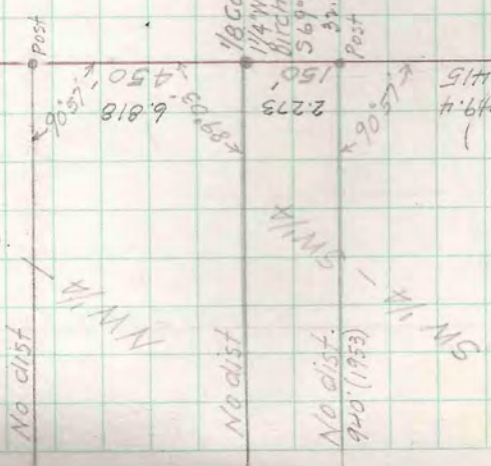
S 89°05'E



N 89°51'E
19.85
6.997
171°00'
176°52'
4.505



2857.5
43.296
5 0° 4'E



Peter D. Kauten

T 39N-R6E SEC. 27 LOT 2

June 14, 50

N1A COR. Mag. 587°50'E Sec. Line
 206.4' 2x2 SHK.
 206.6" N15E
 14.3'

17°25'
 166.5' Mag. 50°30'E

R. D. KAUTEN

2453

Marked Oak
 Orig. 51K
 Set New 51K
 DAK 8" 555°E 14.9'

BOYGER LAKE

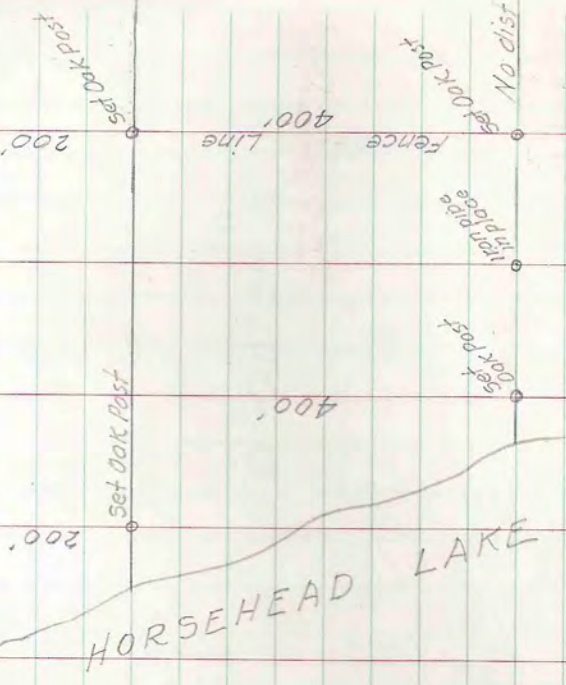
2x2 SHK.
 X Pine 14"
 N 56°W 9.1'

T 38N-R7E SEC 14 LOT 4

June 15, 50

M.C.
Iron pipe
14' N of fence

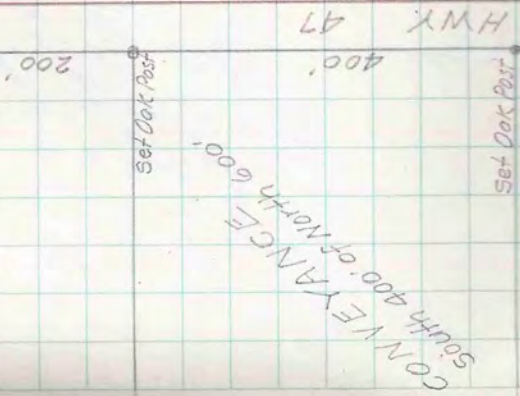
Fence Line



HORSEHEAD LAKE

Did not find 1/4 cor.

Fence Line
Approx. 1/4 Line



HWY 47

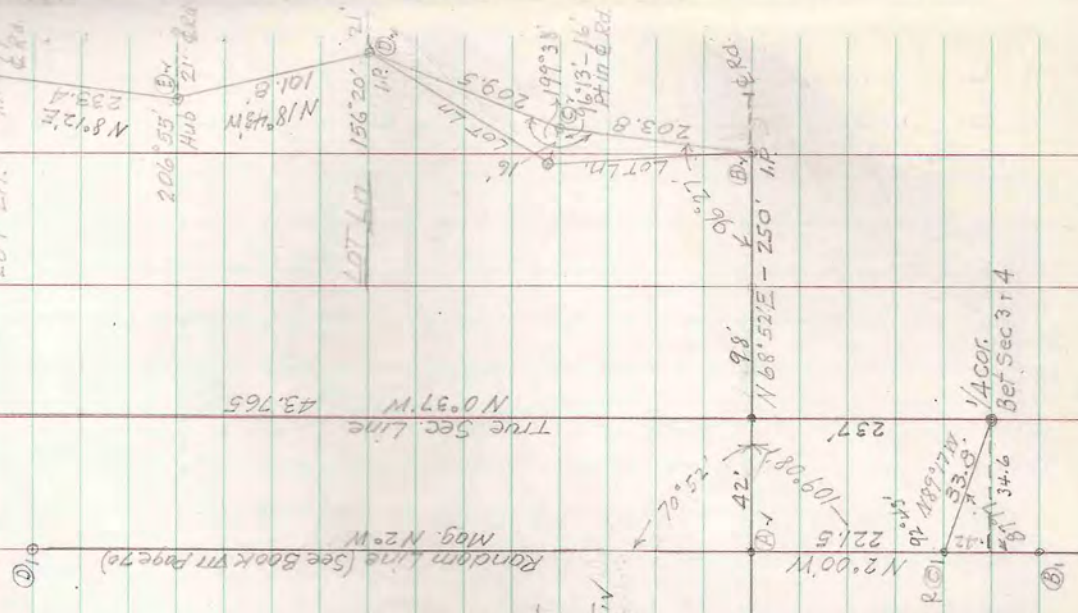
CONVEYANCE
South 400' of North 600'

Lord Dookie
Upper Gresham Lane

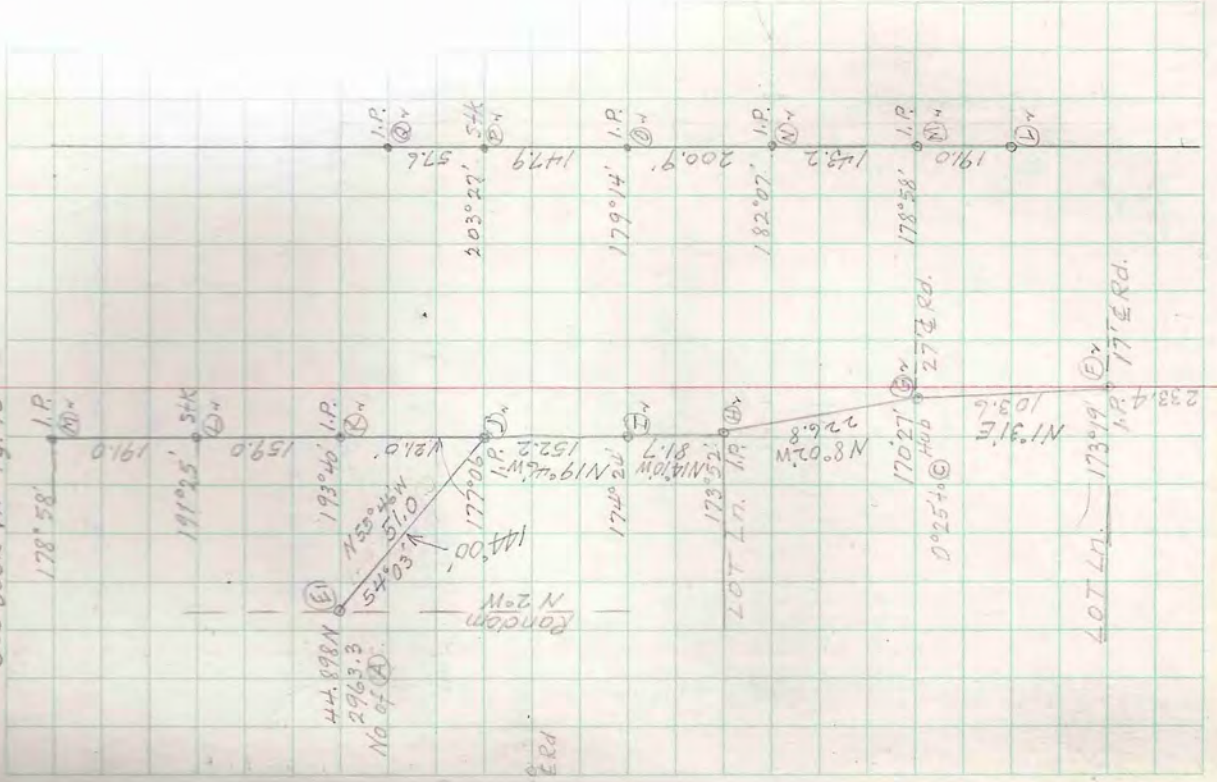
TAN-R6E SEC. 3 LOT 5
SEC. 4 LOT 5

WEST SIDE OF ROAD

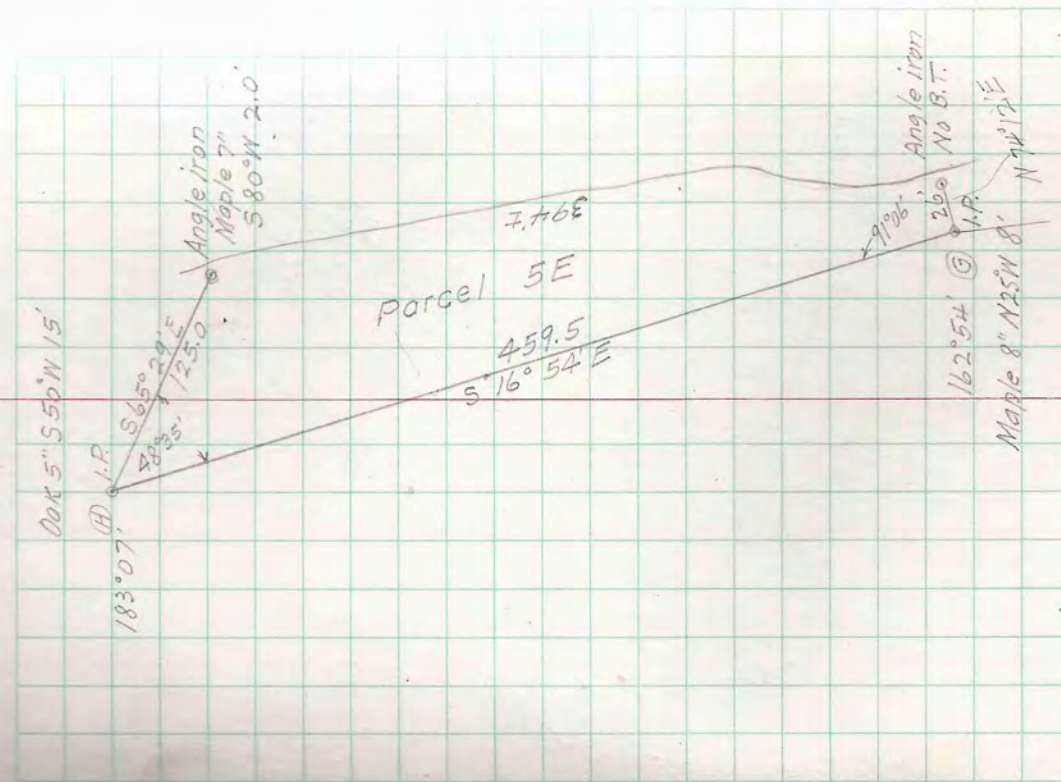
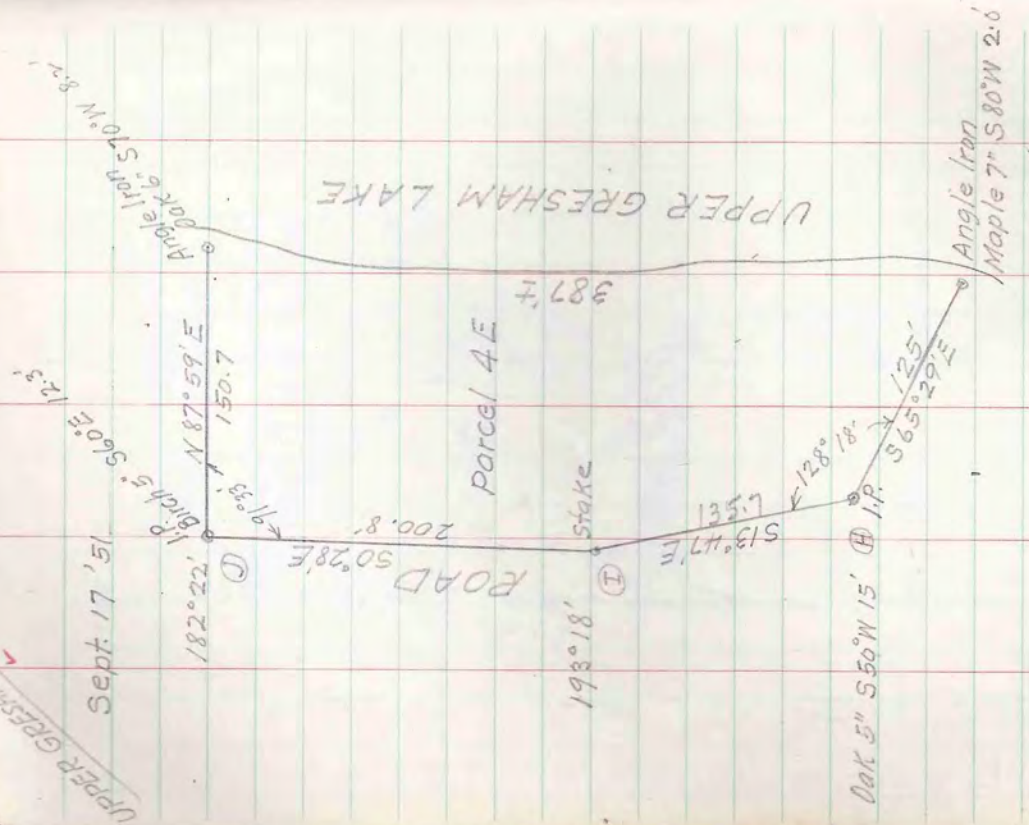
- 179° 56'
- 179° 41'
- 70° 52'
- 96° 37'
- 199° 38'
- 156° 20'
- 206° 55'
- 173° 19'
- 170° 27'
- 175° 52'
- 174° 24'
- 177° 06'
- 193° 40'
- 178° 58'
- 182° 07'
- 179° 14'
- 179° 14'
- 79° 27'
- 173° 27'
- 36° 27'
- 3229 160
- 110
- 3240 00



See Book VII Pg. 70



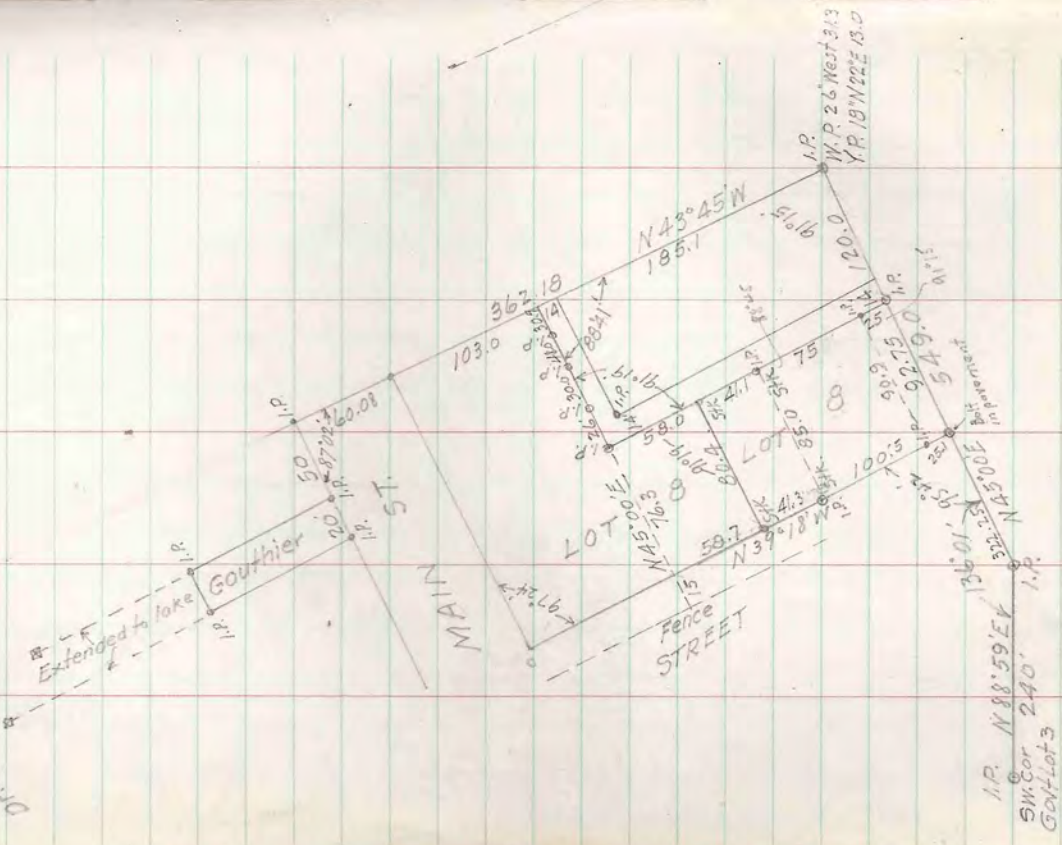
UPPER GRESHAM
Sept 17 '51



Sec. 8-40-5

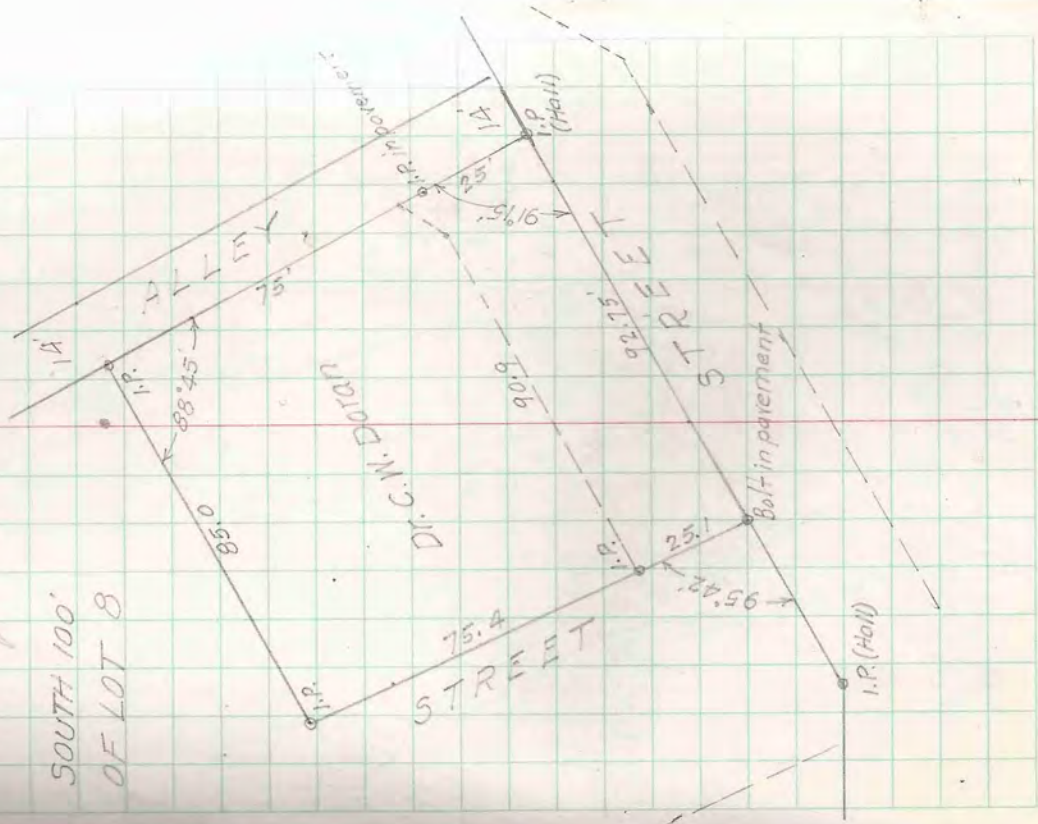
Village of Lac du Flambeau
Part of Lot 1 Block 1

Ben Gotschy
For Charles B. L. H. H. H.
For Tom Rehm
Dr. C. M. Dornan



Dr. C. W. Moran
216 W. Stephenson St
Freeport, Ill.

SOUTH 100'
OF LOT 8



~~V.L. Rozicka~~

T43N-R6E SEC. 7 LOT 1

June 12 '50 316 Sheridan Road

Vincent J. Rozicka Kewbsha Wis

Misc Fence

11

100'

216'

200'

185'±

240'

285'

124.8

153° 31'

1.P. in place

Fence Line ✓ 116° 00'

26.1

30'

Stk.

105'

Point marked by Herman Grosjean

N 21° 45' E 317.5

32.81

N 26° 00' E

114° 39'

100'

N 24° 37' E

200'

6° 23'

140'

140'

140'

140'

140'

140'

Line

92'

218.6

216.5

Time of S.

9'

10'

10'

10'

10'

10'

10'

10'

10'

10'

10'

10'

10'

10'

10'

10'

10'

10'

10'

10'

10'

10'

10'

LAKE

ISLE

PARQUE

574° 37' N

100'

100'

100'

100'

100'

100'

100'

100'

100'

100'

100'

100'

100'

100'

100'

100'

100'

100'

100'

100'

Garage

26° 25' 29"

101'

274° 55'

101'

101'

101'

101'

101'

101'

101'

101'

101'

101'

101'

101'

101'

101'

101'

101'

101'

101'

101'

101'

101'

101'

101'

101'

101'

101'

101'

101'

101'

26° 25' 29"

101'

274° 55'

101'

101'

101'

101'

101'

101'

101'

101'

101'

101'

101'

101'

101'

101'

101'

101'

101'

101'

101'

101'

101'

101'

101'

101'

101'

101'

101'

101'

101'

101'

101'

26° 25' 29"

101'

274° 55'

101'

101'

101'

101'

101'

101'

101'

101'

101'

101'

101'

101'

101'

101'

101'

101'

101'

101'

101'

101'

101'

101'

101'

101'

101'

101'

101'

101'

101'

101'

101'

26° 25' 29"

101'

274° 55'

101'

101'

101'

101'

101'

101'

101'

101'

101'

101'

101'

101'

101'

101'

101'

101'

101'

101'

101'

101'

101'

101'

101'

101'

101'

101'

101'

101'

101'

101'

101'

26° 25' 29"

101'

274° 55'

101'

101'

101'

101'

101'

101'

101'

101'

101'

101'

101'

101'

101'

101'

101'

101'

101'

101'

101'

101'

101'

101'

101'

101'

101'

101'

101'

101'

101'

101'

101'

26° 25' 29"

101'

274° 55'

101'

101'

101'

101'

101'

101'

101'

101'

101'

101'

101'

101'

101'

101'

101'

101'

101'

101'

101'

101'

101'

101'

101'

101'

101'

101'

101'

101'

101'

101'

101'

26° 25' 29"

101'

274° 55'

101'

101'

101'

101'

101'

101'

101'

101'

101'

101'

101'

101'

101'

101'

101'

101'

101'

101'

101'

101'

101'

101'

101'

101'

101'

101'

101'

101'

101'

101'

101'

26° 25' 29"

101'

274° 55'

101'

101'

101'

T40N-R5E SEC 23 LOT 2

Robinson's Subdivision

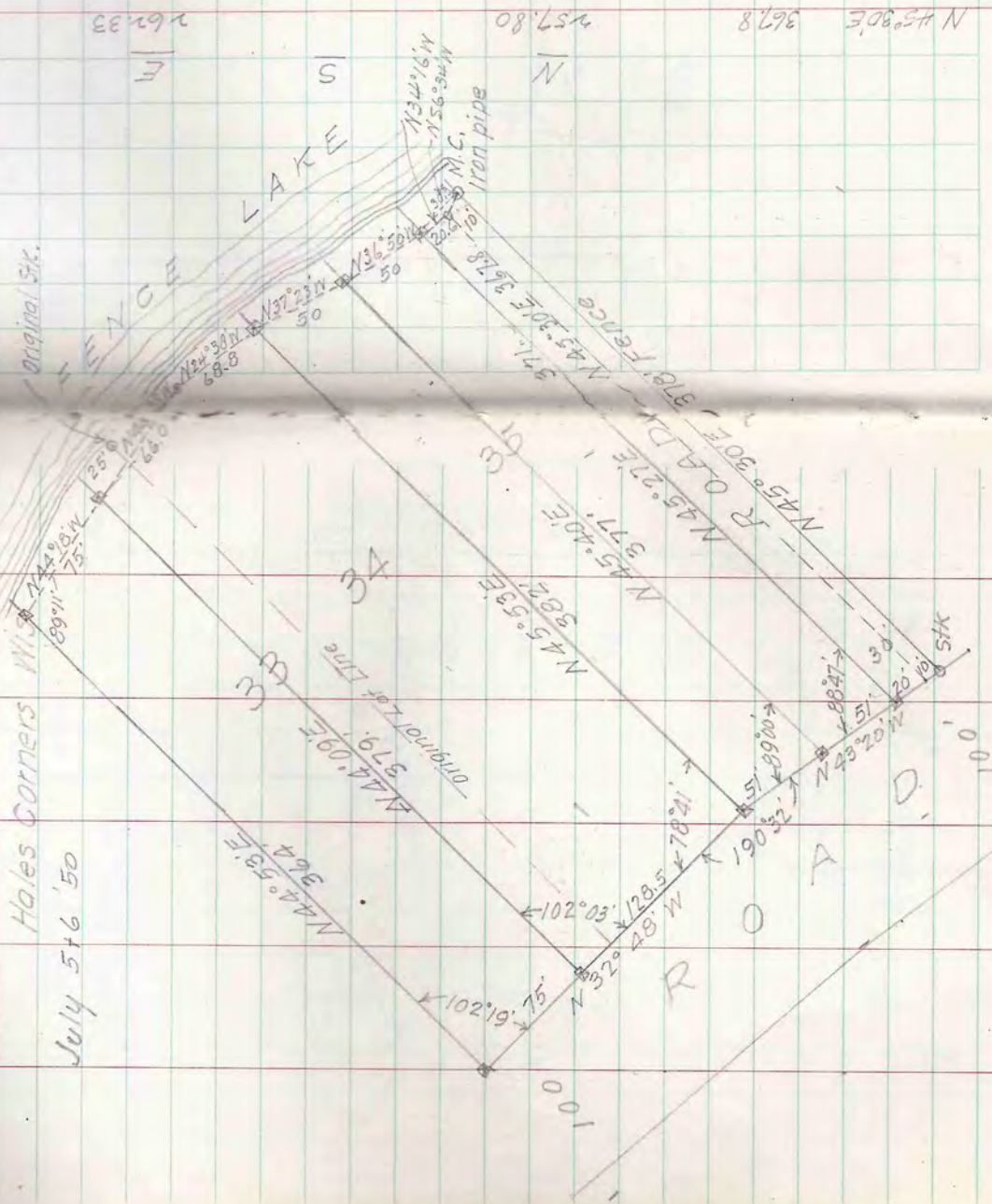
Re-survey and division of Lots 33-34-35

For M.E. Heim

Hales Corners

July 5th 1850

11.60	17.02	517.76	517.76	N 34° 16' W	20.6	N 45° 30' E	367.8
29.97	40.02	171.05	171.05	N 36° 50' W	50.0	N 44° 18' W	75.0
30.56	39.73	88.73	88.73	N 44° 38' W	68.8	N 44° 38' W	66.0
28.67	62.54	171.05	171.05	N 24° 38' W	68.8	N 44° 18' W	75.0
46.37	46.97	257.91	257.91	N 44° 53' W	364.0	N 44° 53' W	364.0
52.38	53.68	110.73	110.73	S 32° 48' E	203.5	S 32° 48' E	203.5
156.86	257.91	456.28	456.28	S 43° 20' E	122.0	S 43° 20' E	122.0

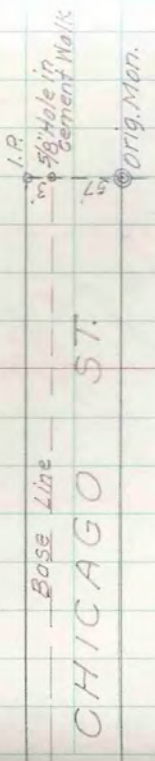
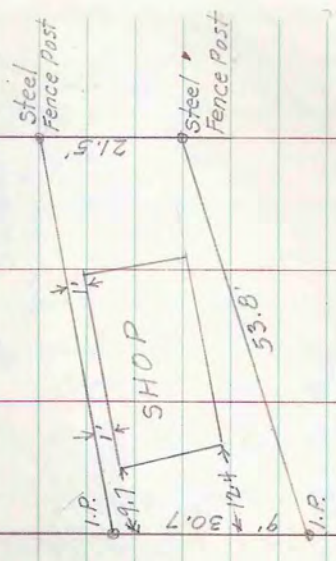


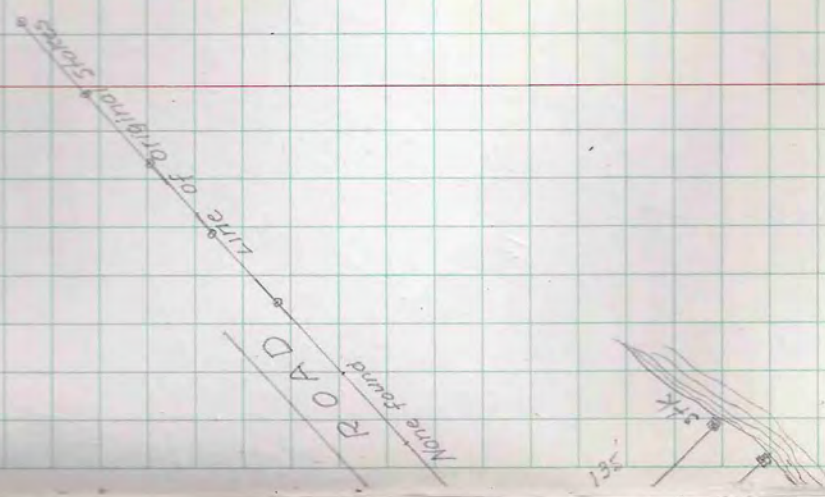
M.E. Heim

VILLAGE OF MINOCQUA
 LOT 5 Block II
 July 6 '50

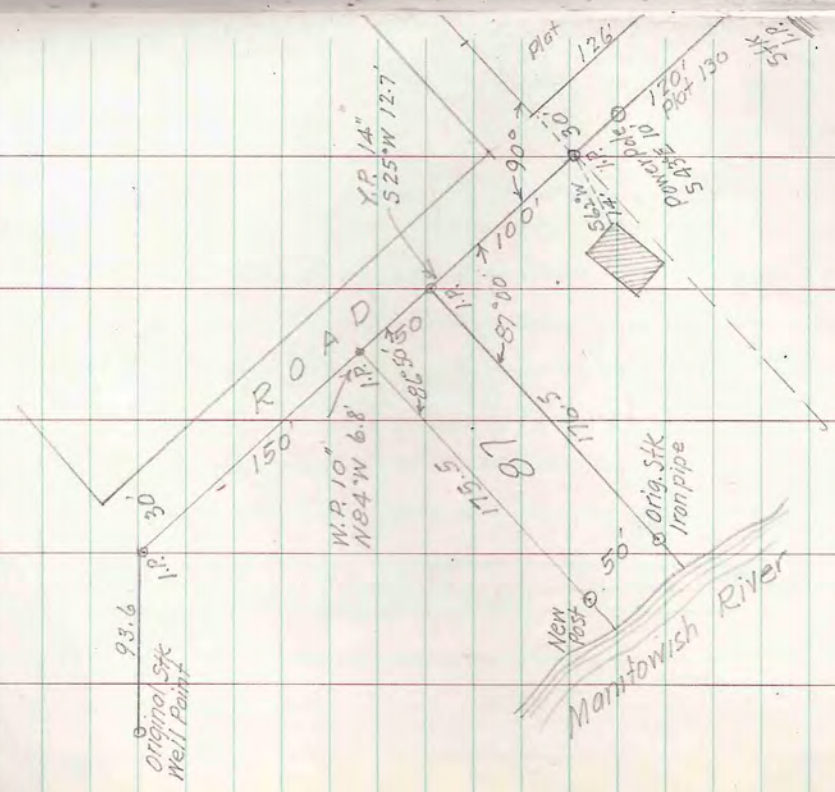


5





T42N-R5E SEC 10
SHORE ACRES PLAT



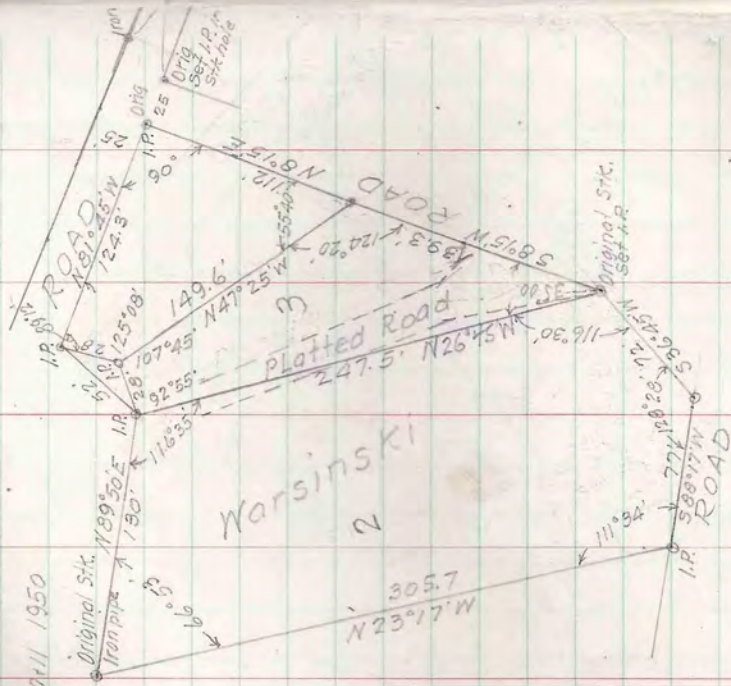
Angeline Knott

T40N-R5E SEC. 20

KEHTEAMAUG LODGE PLAT
CRAWLING STONE LAKE

To locate Lots 2 & 3 and divide same.

July 14/11 1950



(97.43)

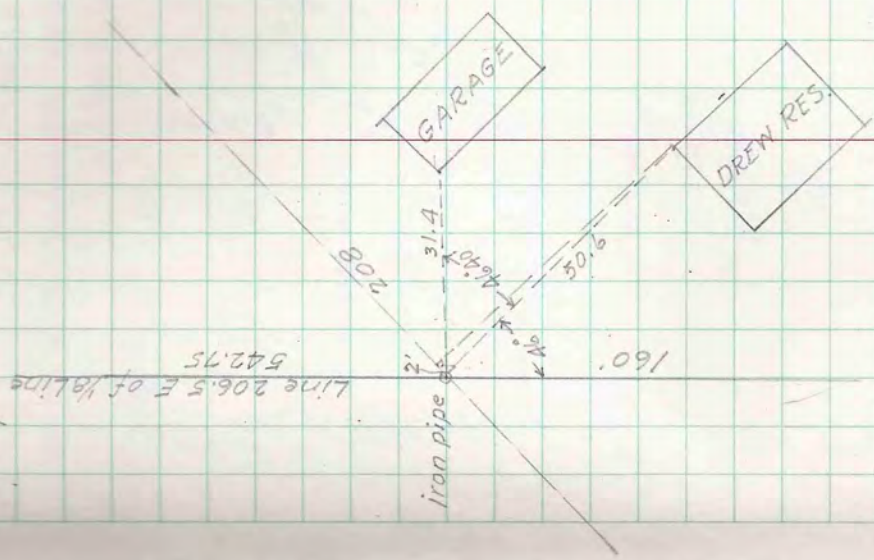
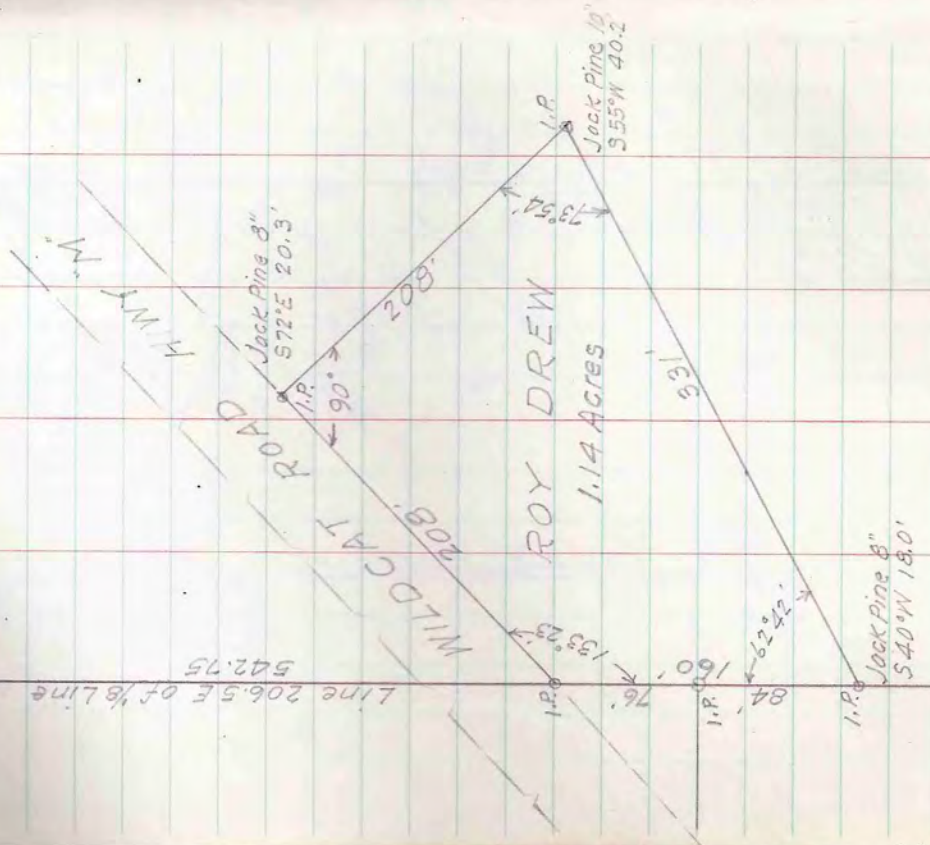
(120.48) (1949)

Original Stk.
I.P. Road

	N	S	E	W
N 89° 50' E - 130.0	.38		130.0	
S 26° 45' E - 247.5		221.0	111.4	43.1
S 36° 45' W - 72.0		57.7		77.0
S 88° 17' W - 77.0		213		120.8
N 23° 17' W - 305.7	280.80			240.9
	281.18	281.0	241.4	
N 8° 15' E - 112	1109		16.1	
N 81° 45' W - 124.3	17.8			128.9
S 7° 27' W - 28.0		27.8		3.6
S 47° 25' E - 149.6		101.2	110.2	
	128.7	129.0	126.3	126.5

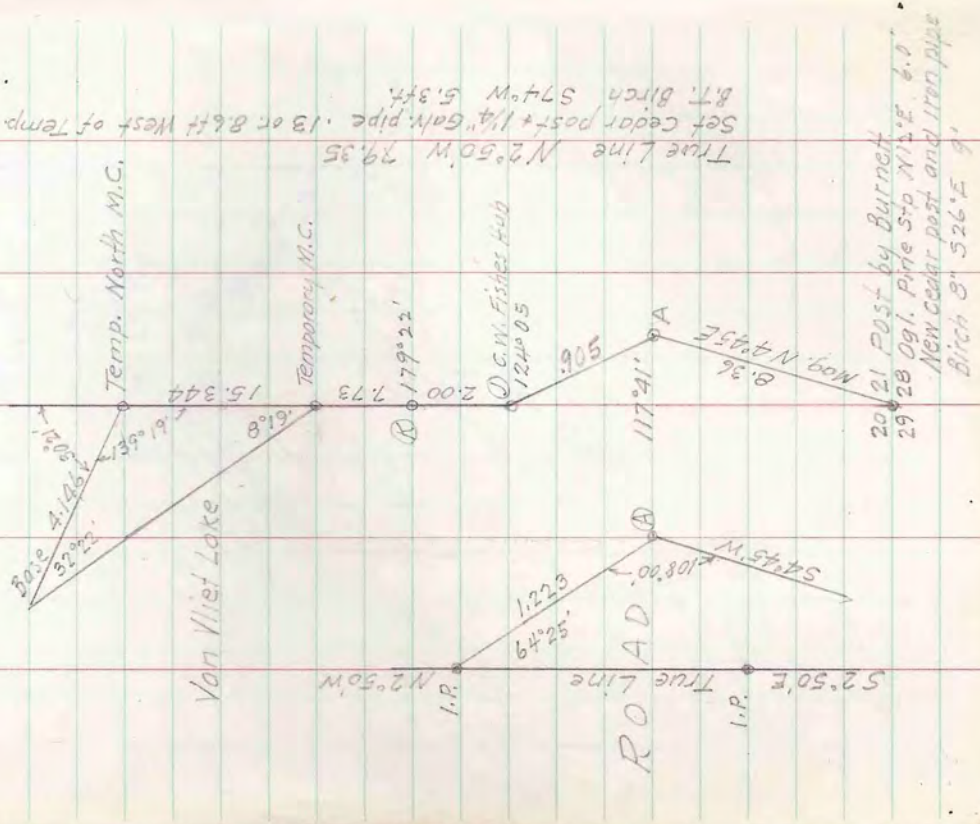
T42N-R7E SEC. 16. NE-NW

July 20, 1950 Rubber Jct.



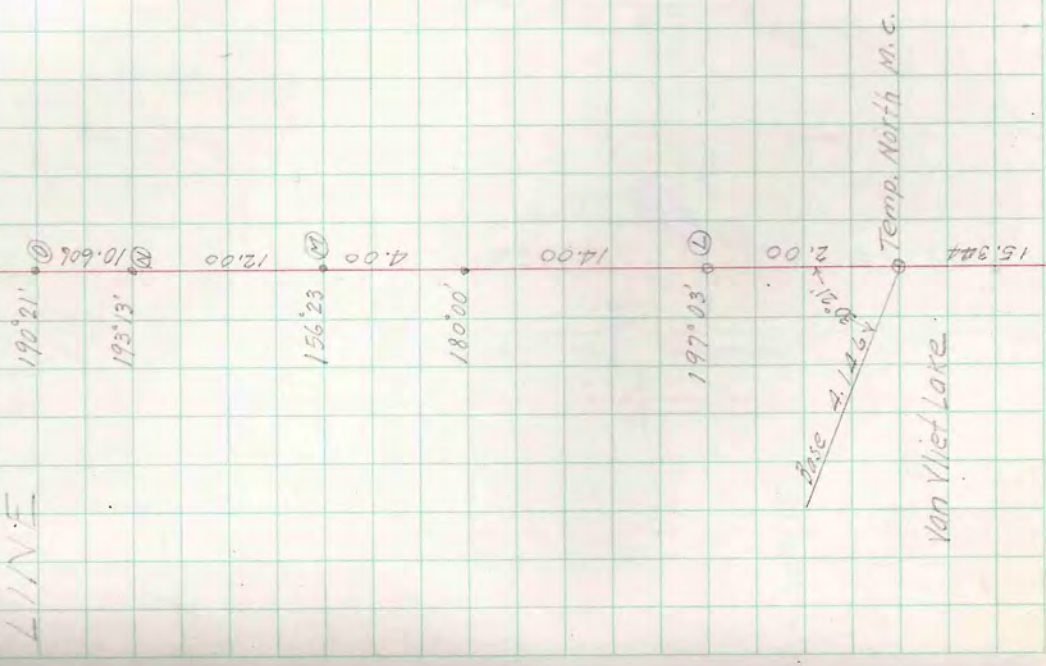
T43N-R6E SEC. 21 LOTS 7+8
 James R. Baer
 2001 Swan Boulevard Milk 13 Wis.
 July 25 to 30 '50

WEST

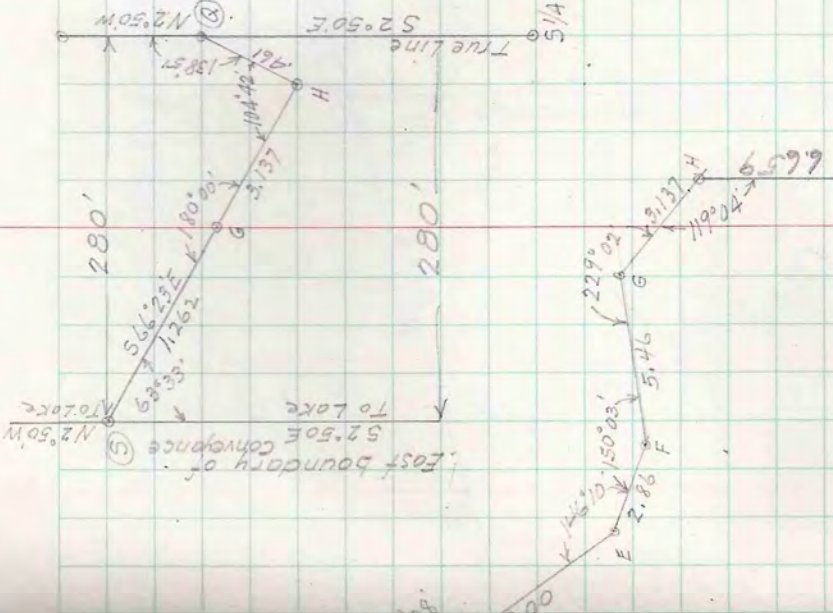
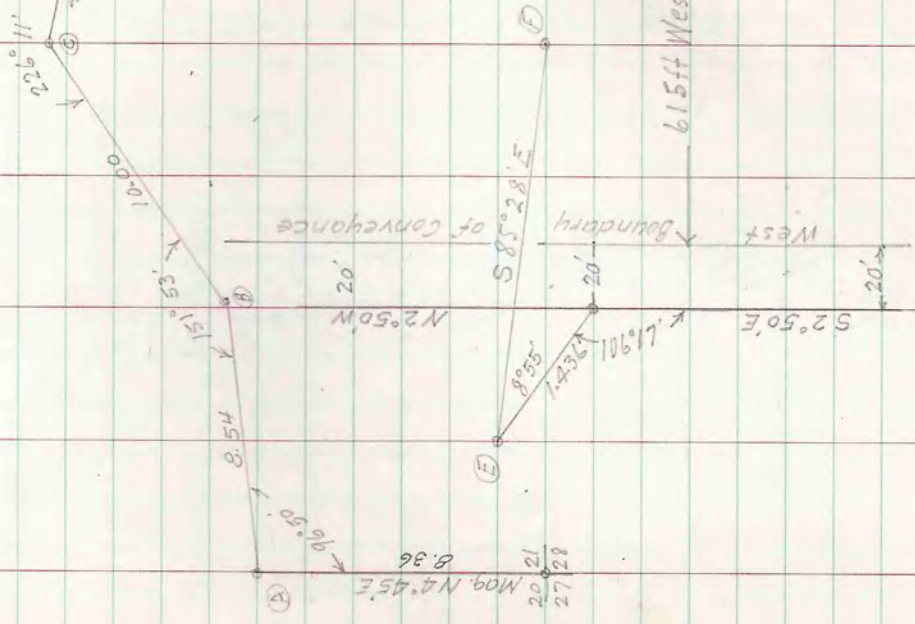


17 1/2 Post by Burnett
 20121

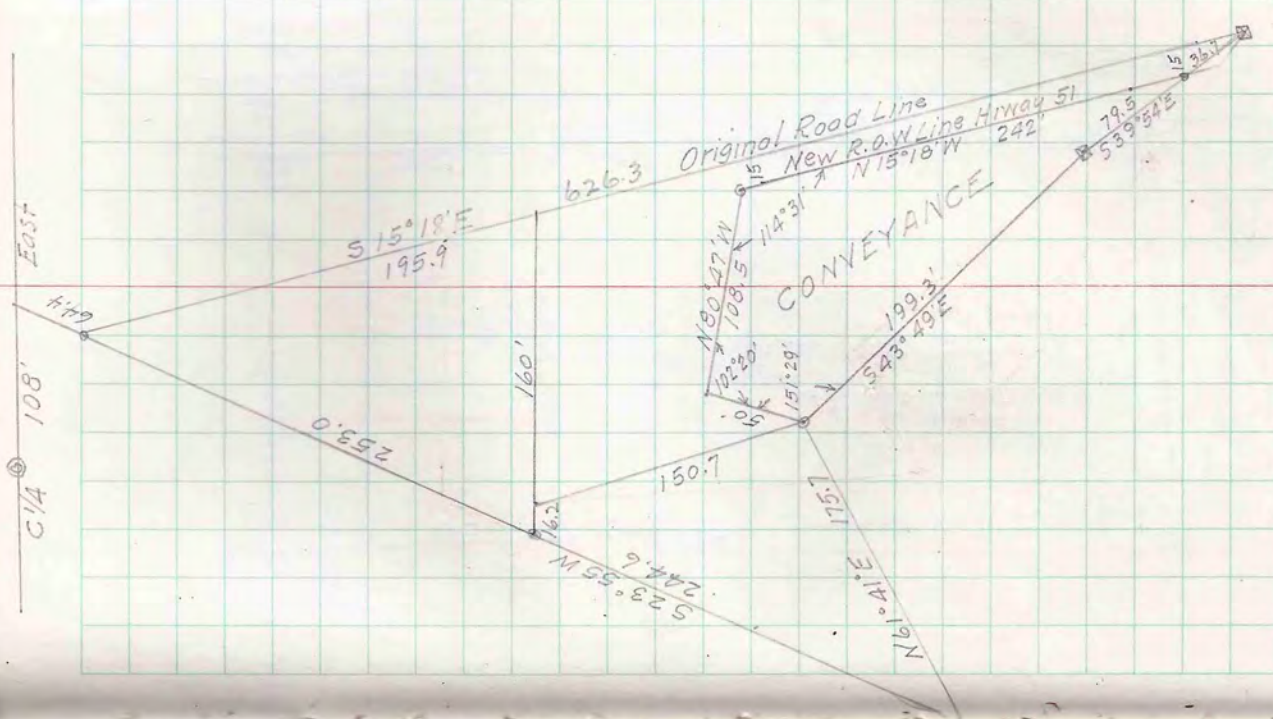
L.I.N.E



T43N-R7E SEC. 21
ROAD TRAVERSE



Post by Burnett.
S 1/4 Maple 9° N 84° E 22'.
S 1/4 Hem. 6° N 3° W 14.8



T 39N-R6E SEC. 11 LOT 5

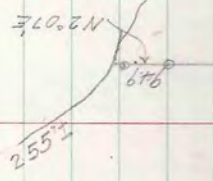
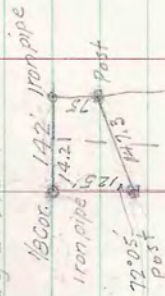
July 29, '50

Roberts
Jurajons
4-9

TAIN-RGE SEC. 4 LOT 2

J.R. Dickerson
Manitowish Waters

Aug 2, 1950



111.3
187.2
180.0
63.3

UPPER GRESHAM LANE

CONVEYANCE

True 1/4 LINE
ROAD
KANDOM

Sig Eckert Vol. 124-422

N10.0W
630.8

U.S. HIGHWAY 51

GOV LOT 2

LANE

882'

440.7
13.5 (Burnett)

570

1312.7

Genl 1/4 cor
(Burnett)

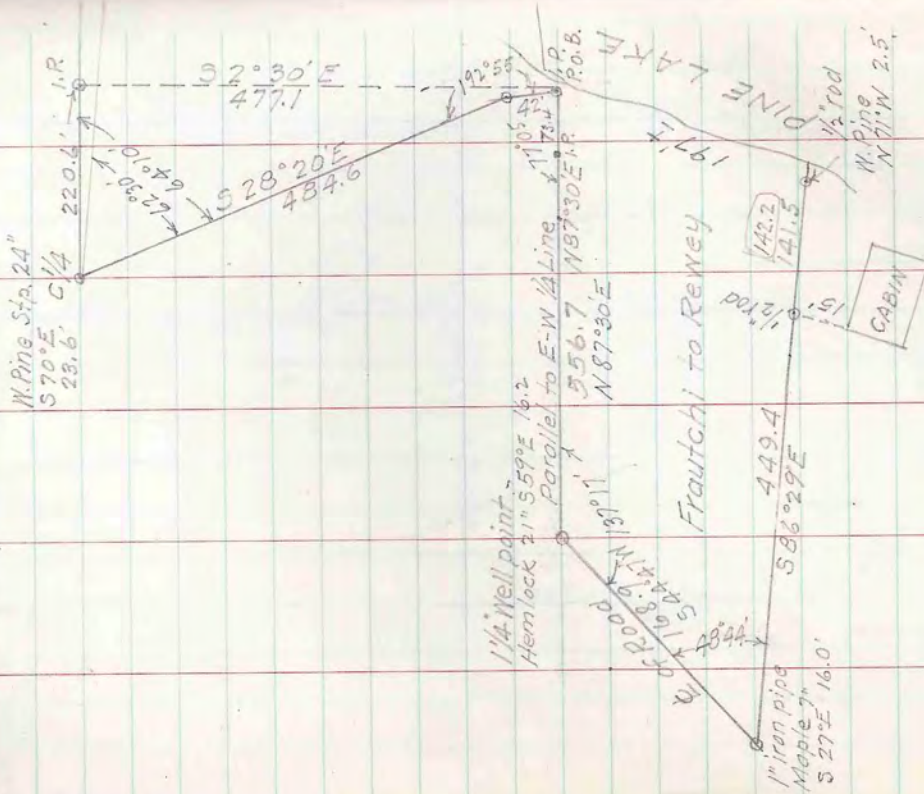
(Edw. Mueller Vol. 113 P. 6)
SE-NW Sec 4-41-6

T 39 N - R 4 E SEC 36

Walter A. Fraituchi Madison Wis

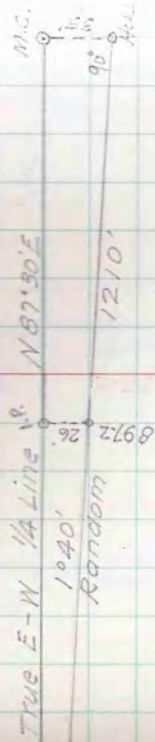
Aug. 6 + 7 '50

W.A. Fraituchi



Highway 14"
N 61° E 27.4'

GOVT LOT 3



GOVT LOT 4

VILLAGE OF WOODRUFF

5-A-15
Rund
1/1

Aug. 7 '50

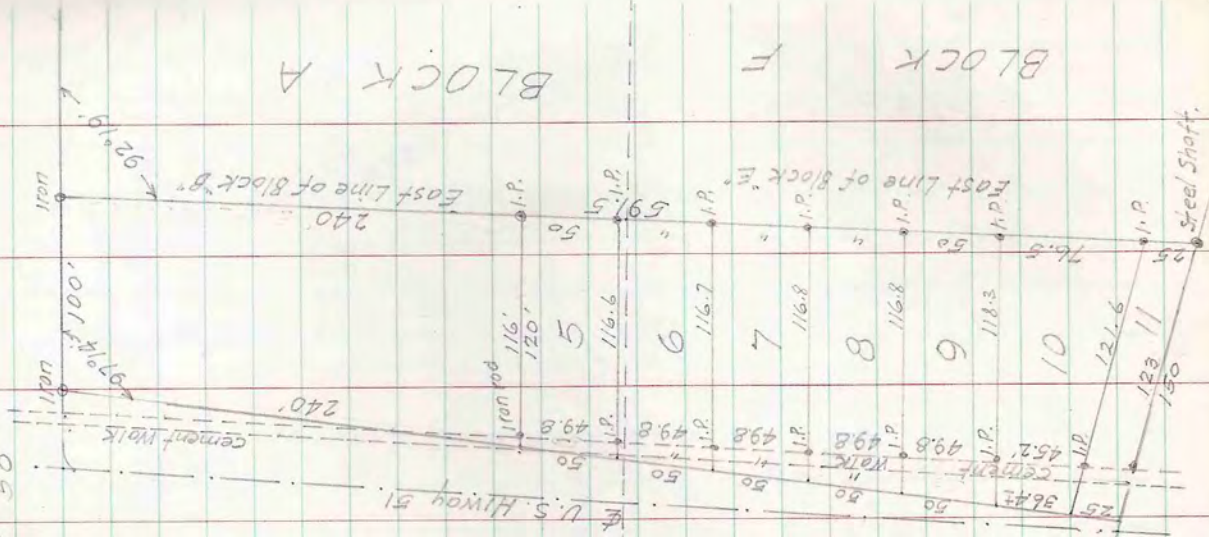
(See pages
18 and 49)

BLOCK B

BLOCK E

BLOCK A

BLOCK F

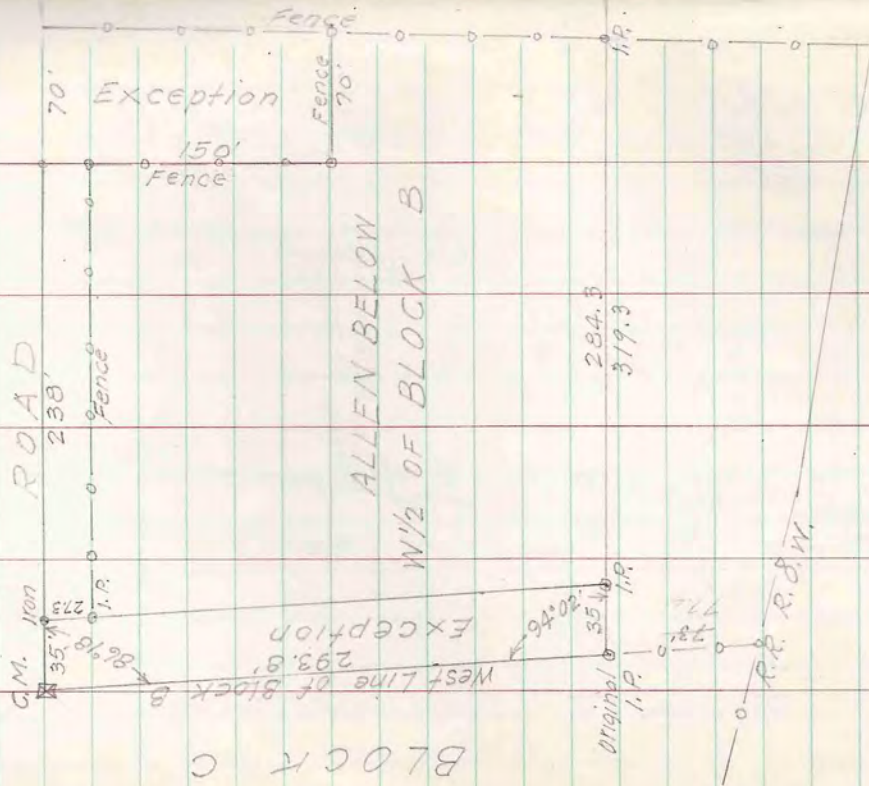


M.C.

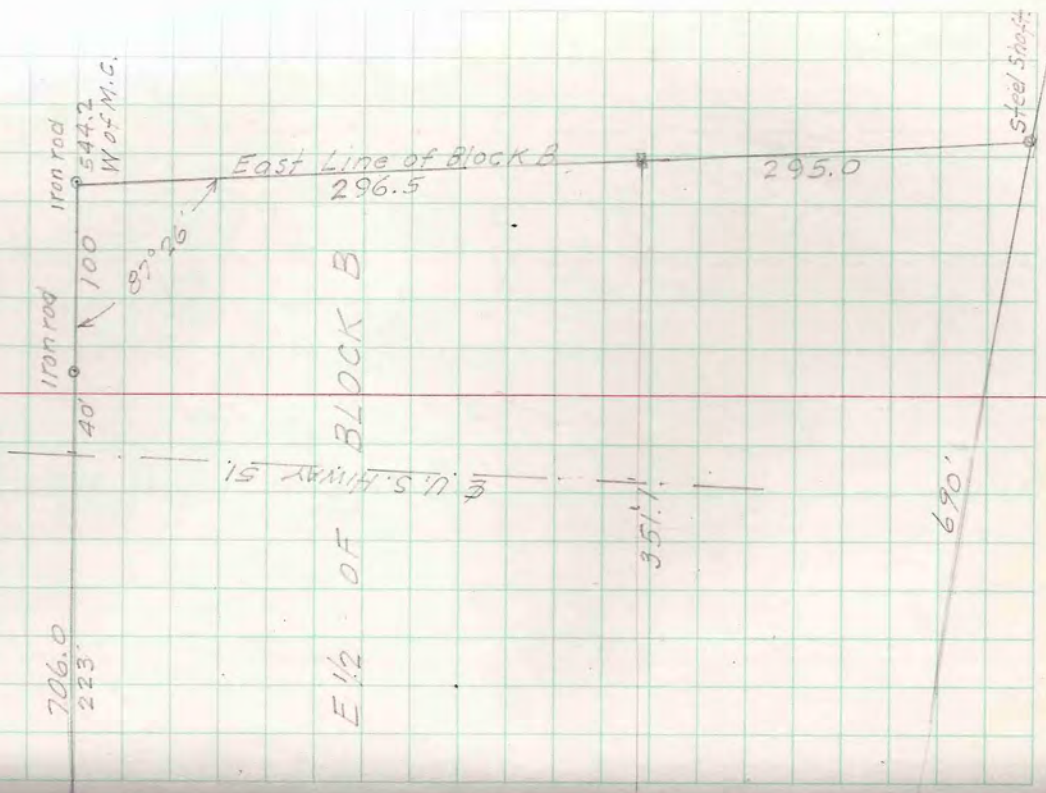
544.2

A. Below

VILLAGE OF WOODRUFF
For Allen Below Aug. 8, 50
W 1/2 Block B Exc. N 35ft.
Exc. Lot 70 x 100 in NE. Cor.



Block C



E 1/2 OF BLOCK B

Walter Fisher
4-9
Hugo Kahlberg

T 39N-R6E SEC. 11 NW-NE
Hugo Kahlberg Hoodluff
North Line Sec. 11
496.2 (L.G.G.)

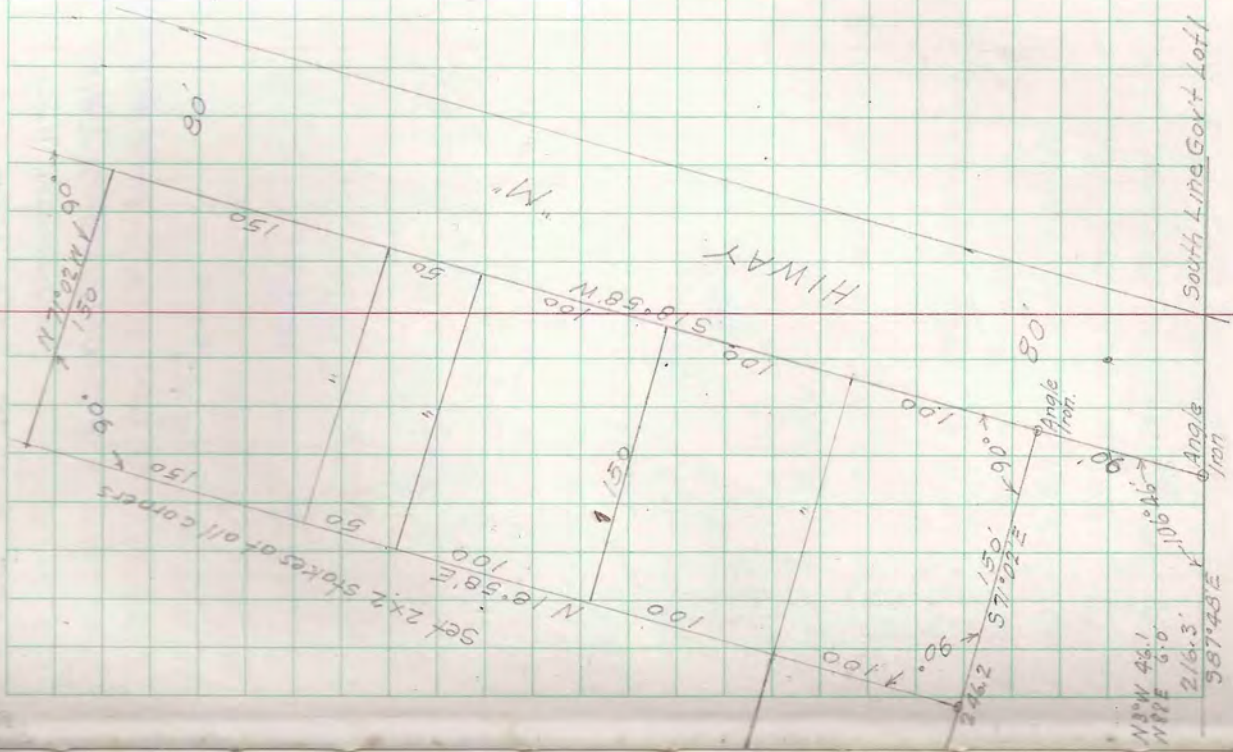
NW 1/4 - NE 1/4



T42N-R7E SEC. 20 LOT 1
 Boulder Jct.
 Aug. 24 '50 For Bill Poquette

Bill Poquette

18 line N 4° 35' E
 157.3
 75° 37'
 96.2
 571° 02' E
 122°
 15° 37'
 103.4
 Jack Pine 7"
 " " 12"
 conc. Mon. # 5K Cor.
 Govt Lot 1

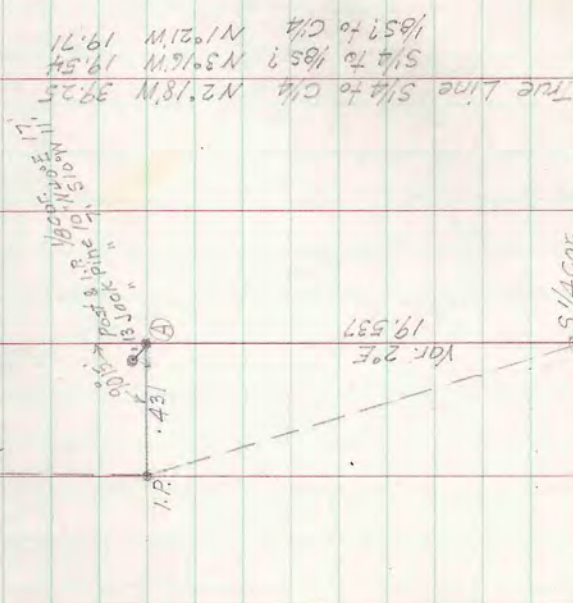


T 40N-R 5E SEC. 34 LOT 9

Wm A. Bothwell

RR 1 Crown Point Ind.

Aug. 29-30 1950



S 1/4 Cor. 1936
I.E.C.W.
Genl. Mon.

True S 1/8 Cor. on 1/4 Line
19.62 N of S 1/4 and 19.62 S of C 1/4
At Sta 3, angle from S 2° E on random 128° 42'

to N 58° 18' W dist. .13
Set post & iron pipe for corner.
B.T. Jack Pine 10' N 40° E 17 ft.

7' S 10° W 11 ft.

At Sta. 8" angle from random S 2° E
92° 00' to West, dist. .16 to true 1/4 line

At Sta 8" S 2° E dist 2.00 ch. to E side
of road and set hub.

At hub 92° 00' to West dist. 128 and set
post on N-S 1/4 line

Easement for 15 ft road E of 1/4 line.

From S 1/4 Cor. followed old brushed out line East to
David Lake. Found squared stake for M.C. No distance

only I.P. No B.T. Wm A. Bothwell testified it is 26 yrs
old and considered as E 1/8 on 1/4 line.

Random Sa Var. 1° 30' E Found old blades.
12-17 fell .766 E of iron pipe supposedly 26 yrs old.

B.T. by Steffack 3 or 4 yrs old. Corrected line E 1/2 S of
this I.P. and projected line S 39° 36' W over Lucy Lake to
David Lake. True line not run.

TAIN-RGE SEC. 9 LOT 7

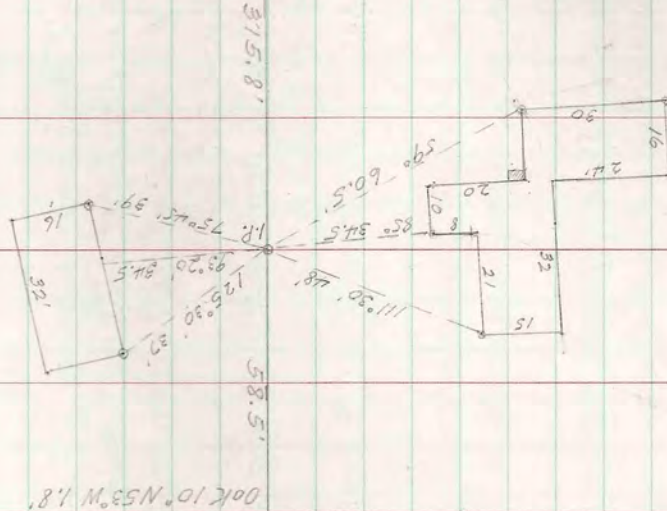
For D. J. Magner

8004 Green St Chicago 20

(See Book VII page 74

Two sketches furnished

LOWER GRESHAM LAKE
10' IRON POST
LOOK 10° N 53° W 1.8'

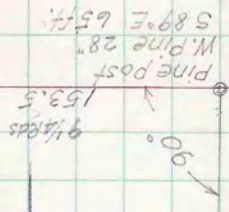


60k Iron pipe
Jack Pipe 16" 557' E 2.6
X Pine 22" 565' W 33.7
Trees not scribed
Sec. Cor. ?

34 Rods W

ROAD
36 Rods W

747.5'



Iron pipe

33' ROAD

PLAT OF GRESHAM ACRES

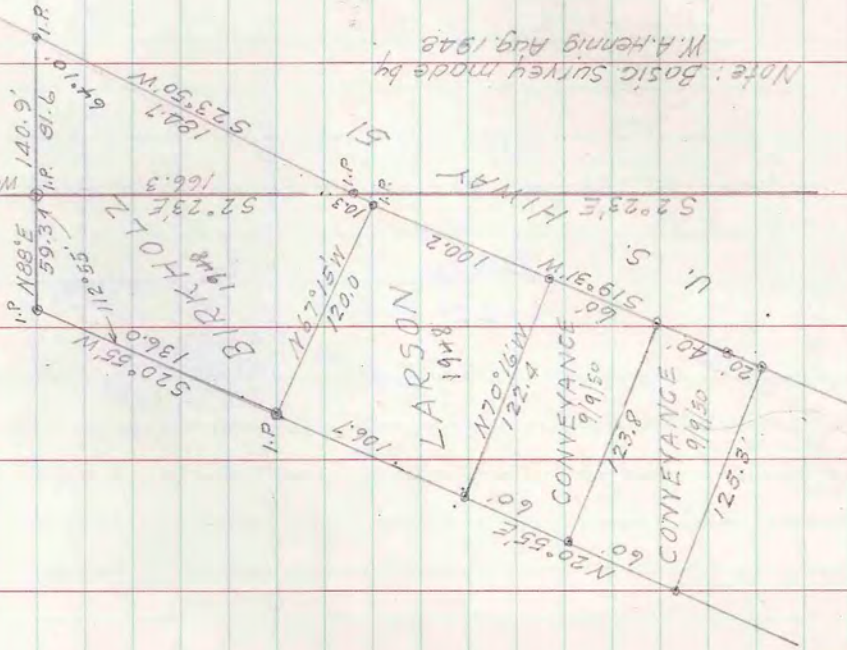
T39N-R0E SEC. 2 SW-SE

South boundary 1/4 Cor Village of Woodruff
N88°00'E 1471.8'

Sept 9, 1950

90°23'

East Line of SW-SE
West Line of SE-SE
200'



Note: Basic Survey made by W.A. Hennig Aug. 1948

T 40N - R 6E SEC. 35 SE-SW

Sept. 15, 1950

Ted Bickowski
Robert Howard



Did not find this point
Falls in road pavement.

HIGHWAY
N69°50'W
476.8

W.R. Hughes
Township Line

C.M.F.

346.3E To 1/4 Cor
(G.W. Fisher)

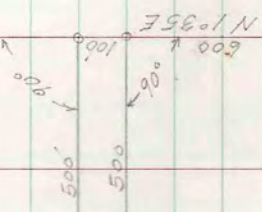
T40N-R6E SEC 8 LOT 1

Sept 19+20 '50

N 1/4 Cor.
Cedar Post
No 2.T.

LOT 1

1321.7



PLUMMER
LAKE

208.2

18 cor.
Post
2\"/>

LOT 2

N 1° 35' E 1321.7

2712'
S 88° 34' W

C 1/4 cor.
Post
1 1/2\"/>

N 1/4

621.7

West
500'

500'
West

600'
N-S 1/4 line

93° 01'
18 cor.

CONVEYANCE
5.39° 30' N
522.6

456.4
S 23° 15' W

200'
Cedar Post

PLUMMER
LAKE

Assumed North
100'

100'
99° 29'

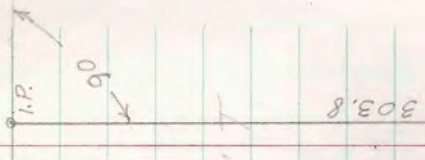
100'
99° 29'

113° 14'

T40N-R6E SEC. 2 LOT 1

Sept 20 50

Make Steiner



GOV'T

10/20/54 Orig. I.P. missing I.P. set
 New I.P. Birch 10'
 N 38E 44.3

LITTLE

SPIDER

LAKE

65

N 88° 16' E
455.5

I.P. 25'

88° 43'

520-66 = 454
50° 27' E

LOT 1

200'

N 88° 16' E
318.0'

I.P.

125° 24'

68'

M.C.

Make to Steiner

372.2' - 50 = 322.2
E-W 14 line

GOV'T LOT 6

U.S. Highway 51

50'

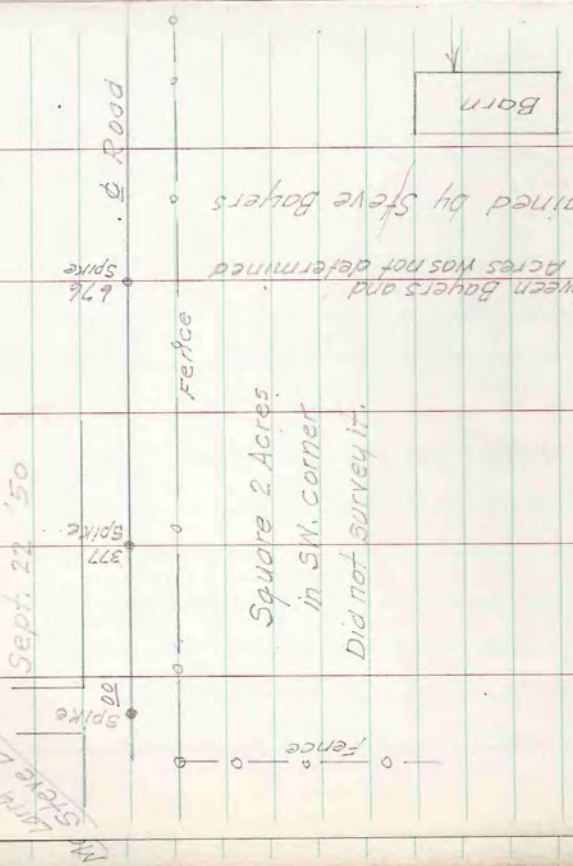
66'

I.P. 50'

I.P. 50'

180'

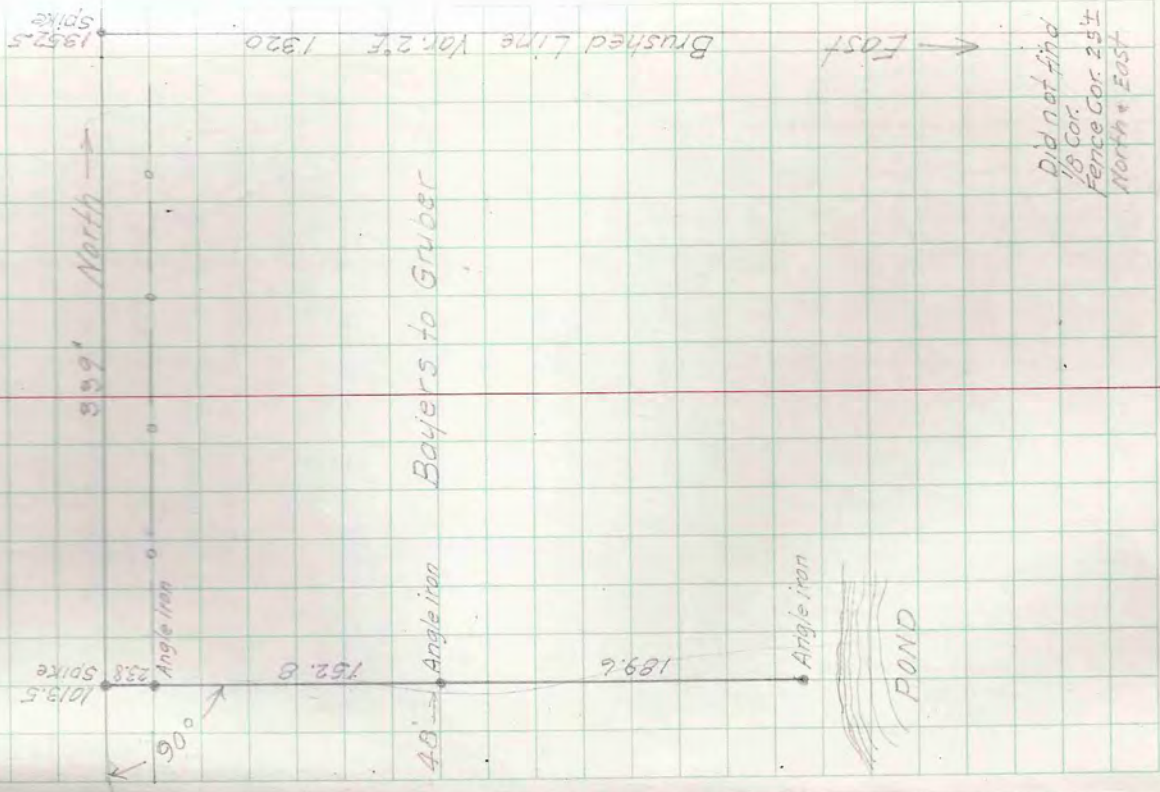
T40N-R6E SEC. 22 SW-NE
Sept. 22 '50
Mr. Larry Gruber
Steve Bayers



Square 2 Acres
in SW. corner
Did not survey it.

Line between Bayers and
square 2 Acres was not determined

Retained by Steve Bayers



Bayers to Gruber

Did not find
1/8 Cor.
Fence Cor. 2 1/2'
North + East

East

T 37N-R7E SEC. 6 LOT 2&4

R. J. Schwartz

906 So. Third Ave. Nausau Wis

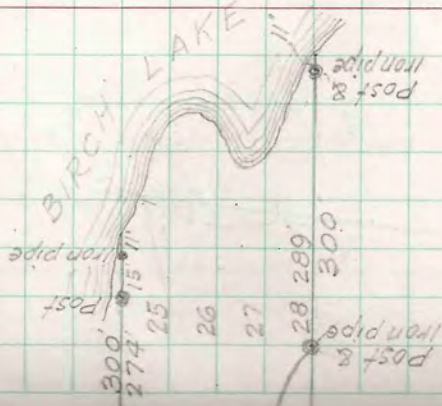
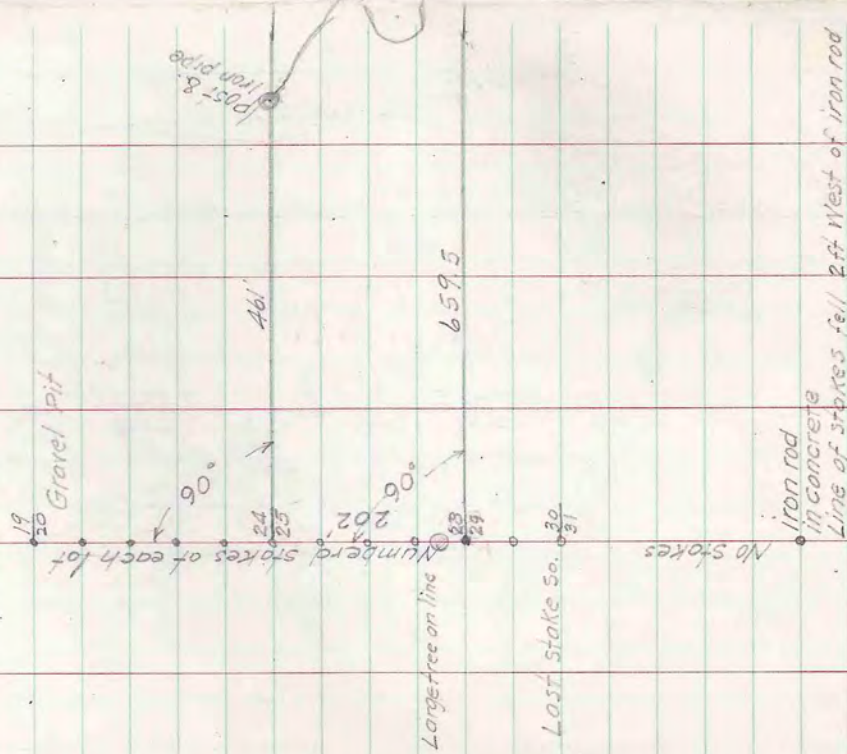
Billy Realty 111 Grand Ave "

W. D. Bystrom Representative

Oct. 6, 1950

Lots 25-26-27-28 Birch Lake Hills

Unrecorded Plat

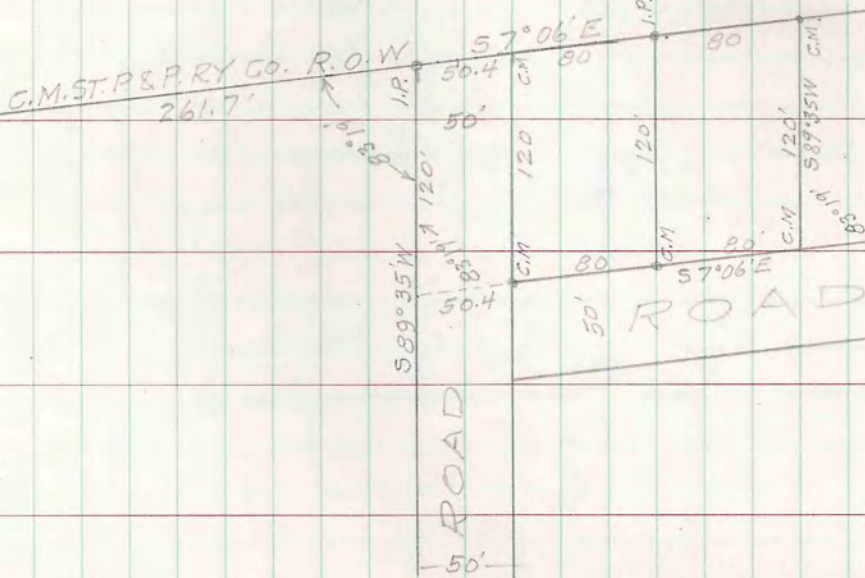


M.C.
Comp. Man.

T 39N-R6E Sec. 11 LOT 6

Oct. 10, 1950

GOV'T LOT 5 S 89° 35' W I.P. 163.6
GOV'T LOT 6



Eugene Olszanski

Brunnerstein

VILLAGE OF WOODRUFF

Block "F" (North Line)

Mart. Blumstein

J. G. A. Stone, Nekosoa, W. Va.

Oct 12 '50

Iron
rod

240'

296.5'

Block "B"

Projected line East to Lake

CONC.

197.1943

I.P.

G.M. STP. & R.R. CO

R.O.W

Block "E"

East Helen Brodocks Pat. 65, 50'

M.C.

544'

Block "A"

YOR 2°E

189.4'

94.7'

18°43'

296.4'

84.6'

CONC. MON.

144.2'

OAK POST

87'

SMALL LAKE

Block "F"

LINE

HUB

94.7'

180'

275.100'

446'

18°43'

296.4'

84.6'

CONC. MON.

144.2'

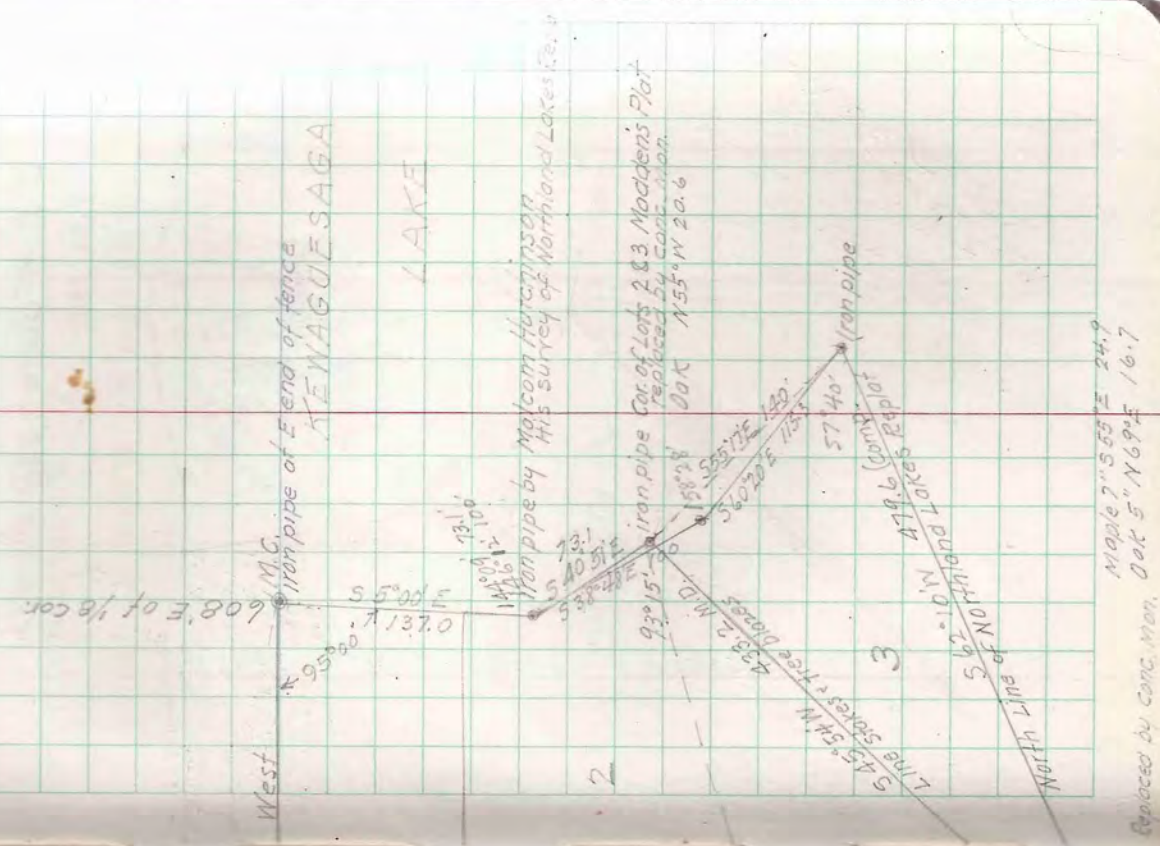
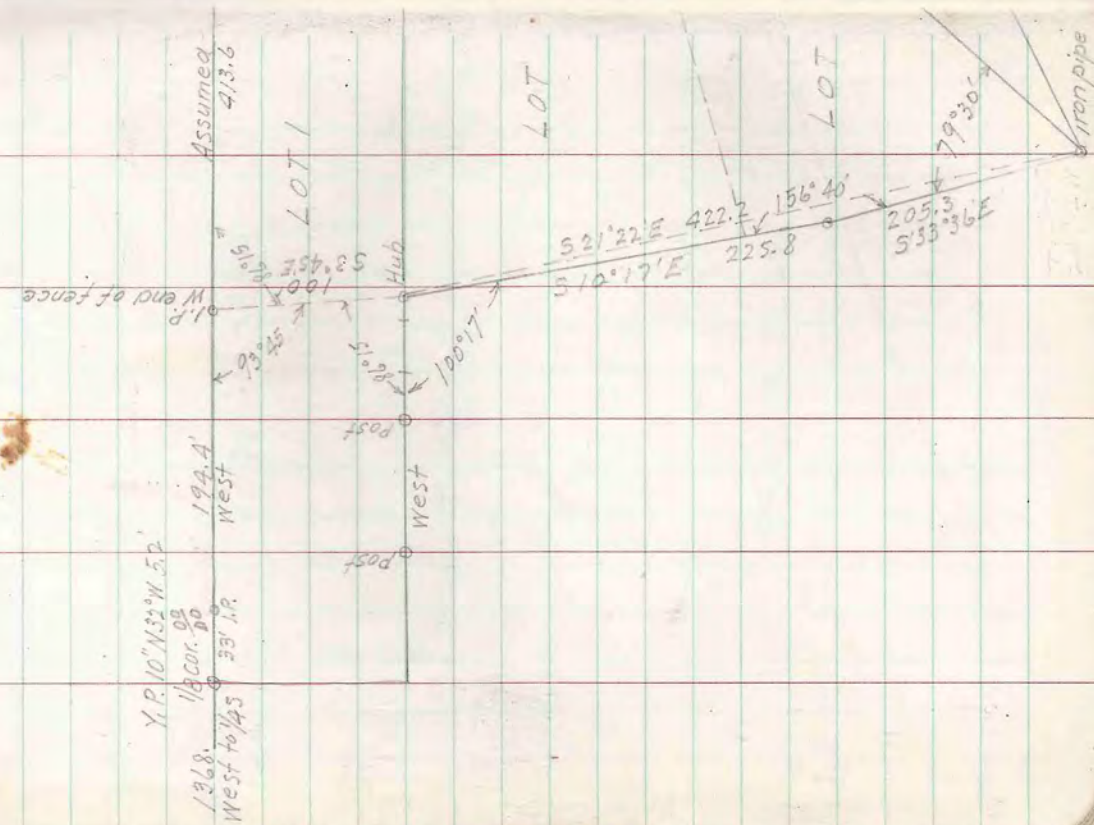
OAK POST

87'

SMALL LAKE

150
 1298.
 West to 145
 33' I.P.
 194.4'
 West
 18 cor. 08
 Y.P. 10" N32° W 52'

T 39N - R 6E SEC 16
 Modden's Lake View Plat
 Lots 1 & 2 and part of Lot 3
 Sept 4, Oct 13, Nov 1st



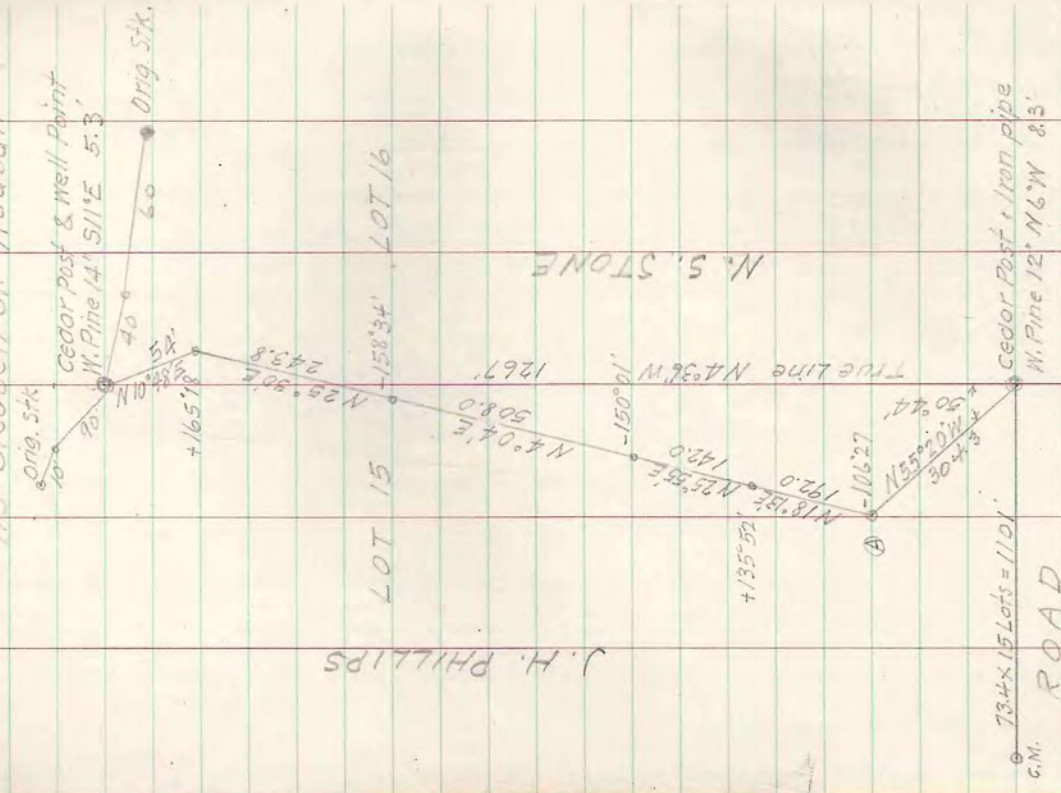
West
 M.C.
 Iron pipe of E end of fence
 KENAGUESAGA
 LAKE

Iron pipe by Malcolm Hutchinson
 His Survey of Northland Lakes Replot
 Iron pipe Cor. of Lots 2 & 3 Modden's Plot
 Replaced by Cong. Mon.
 Oak N 55° W 20.6

Maple 7" S 55° E 24.7
 Replaced by Cong. Mon. Oak 5" N 69° E 16.7

J.H. Phillips

TAIN-RSE SEC. 31 LOT 1
 ALBURL SHORES PLAT
 For J.H. Phillips
 915 Steuben St. Wausau



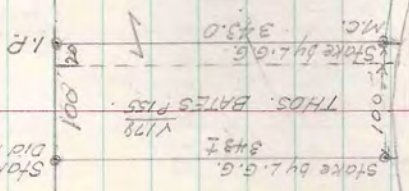
J. H. PHILLIPS

N. S. STONE

	N	E	W
N 55° 20' N - 304.3	173.1		250.4
N 18° 13' E - 192.0	182.4	60.0	
N 25° 35' W - 142.0	127.7		62.1
N 4° 04' E - 508.0	506.7	36.0	
N 25° 30' E - 243.8	220.1	104.9	
N 10° 48' E - 53.0	53.0	10.1	
	1263.0	211.0	312.5
312.5 - 211.0 = tan		N 4° 36' W	
1263.0		Dist	1267

6-A-23
 Lock La Frenier
 T 39 N-R 6 E SEC. 8
 Part of N 1/2 of SE 1/4 - NW 1/4
 For John W. La Frenier
 Nov. 8 '50

Stake broken off
 Did not find point



Line Stakes

100
 M.C.
 Did not find it.

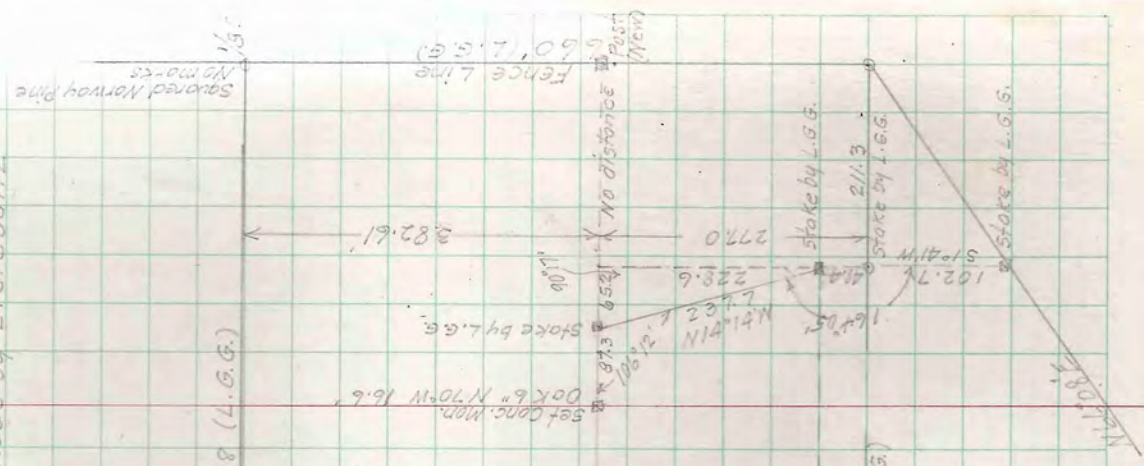
Survey of south line of La Frenier property
 is based on survey made by L. G. Goartz
 dated July 1946

S 88° 10' 39" E 1324.38 (L.G.G.)

La Frenier
 Vol. 164/p 279

S 88° 02' E
 834.5

B 11.75
 S 88° 19' 30" E (L.G.G.)



Saved Norway Pine
 No marks

Fence Line
 607.3 (3)

No distance
 post
 (New)

N 11° 08' E