

RETRACEMENT SURVEYS

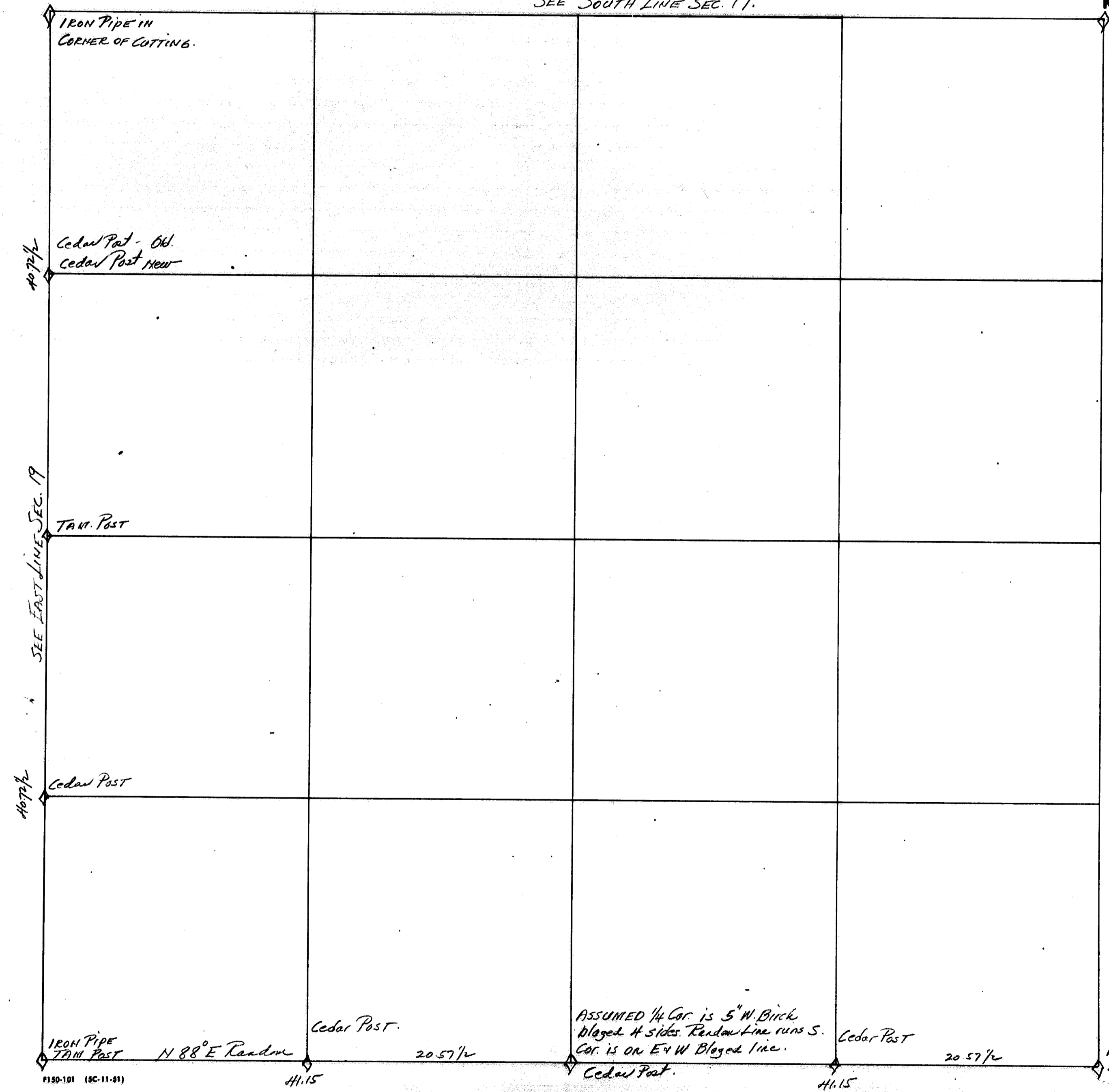
County ONEIDA State Wis.
SEE SOUTH LINE SEC. 17.

Section 20

Township 35N

Range 11E

ASSUME COR TO BE
5" T.M. SQUARED.
MARKED 78.00N and
77.00 EAST.



IRON PIPE IN
CORNER OF CUTTING.

Cedar Post - Old
Cedar Post New

T.M. POST

Cedar Post

IRON PIPE
T.M. POST N 88° E Random

Cedar Post.
41.15 20.57 1/2

ASSUMED 1/4 COR IS 5" W. BUCK
BLAZED 4 SIDES. Random Line runs S.
COR. IS ON E-W BLAZED LINE.
Cedar Post.

Cedar Post
41.15 20.57 1/2

WOOD POST. A Random
Line turns N 12.30° E.

P130-101 (SC-11-31)

60210

12-28-04

17-28-04