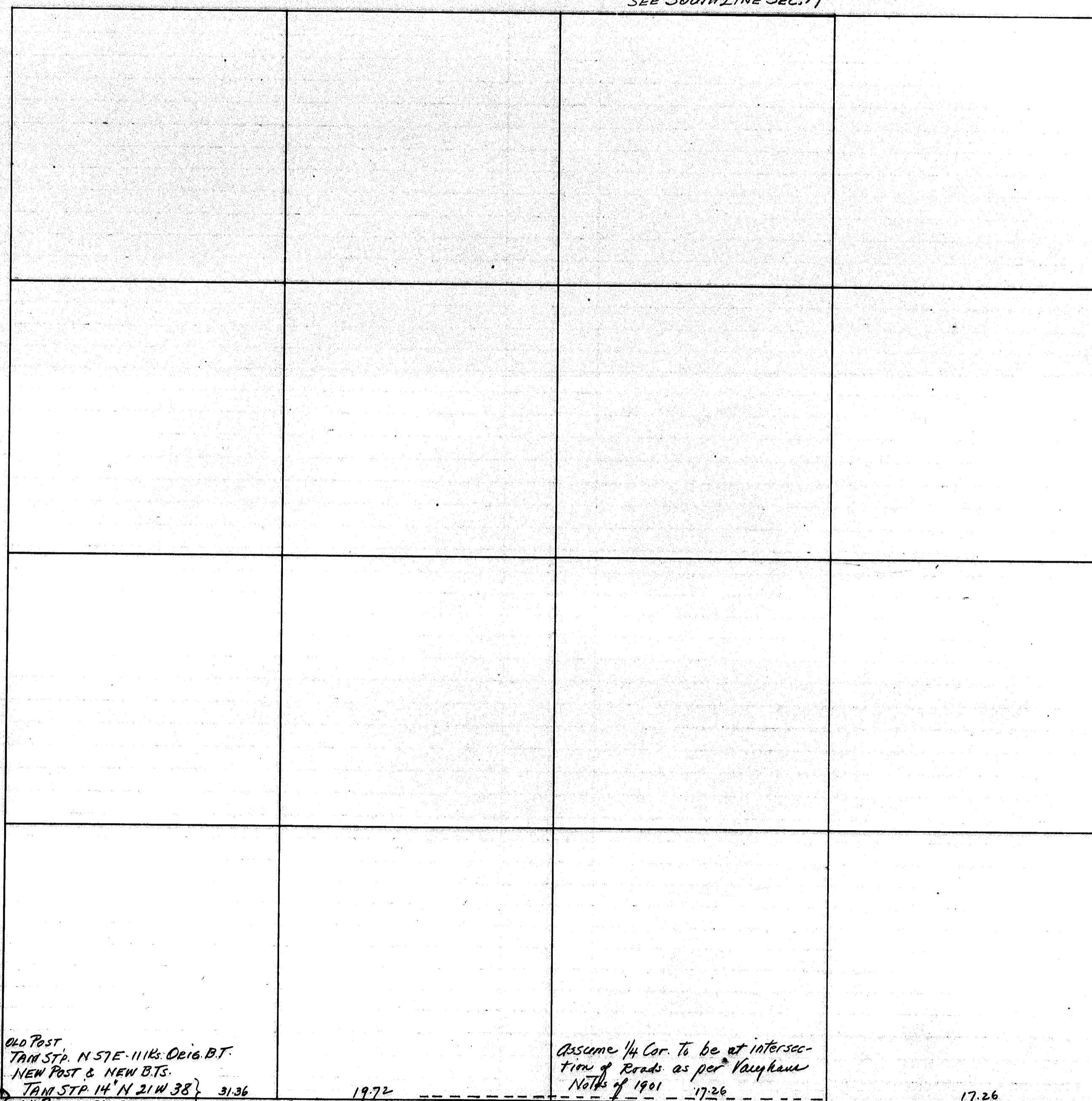


RETRACEMENT SURVEYS

County ONEIDA State Wis.
SEE SOUTH LINE SEC. 19

Section 30
Township 35 N
Range 11 E



SEE WEST LINE SEC. 29

OLD POST
TAM STP. N 57° E - 1112. ORIG. B.T.
NEW POST & NEW B.T.
TAM STP. 14' N 21° W 38 } 31.36
W. BIRCH 9' S 14° E 26 }
P130-101 (82-11-81)

1972
51.08 N 88° 20' E →

Assume 1/4 Cor. to be at intersec-
tion of Roads as per Vaughan
Notes of 1901 17.26

17.26

IRON PIPE in Open Field
SET BY PROPORTION BY
VAUGHAN on Nov. 21-1906

34.52
see Notes for North Line Sec. 31

00227

12-28-04

17-28-04