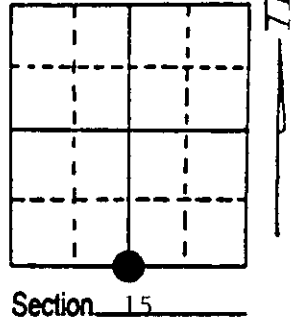


U.S. PUBLIC LAND SURVEY MONUMENT RECORD

Note: This form is intended and designed to fulfill all requirements of Wisconsin Administrative Code, Chapter A-E 7.08 U.S. Public Land Survey Monument Record (3) (a) (b) (c) (d) (e) (f) (g) (h) (i). An additional sheet may be added if necessary to conform with said requirements.

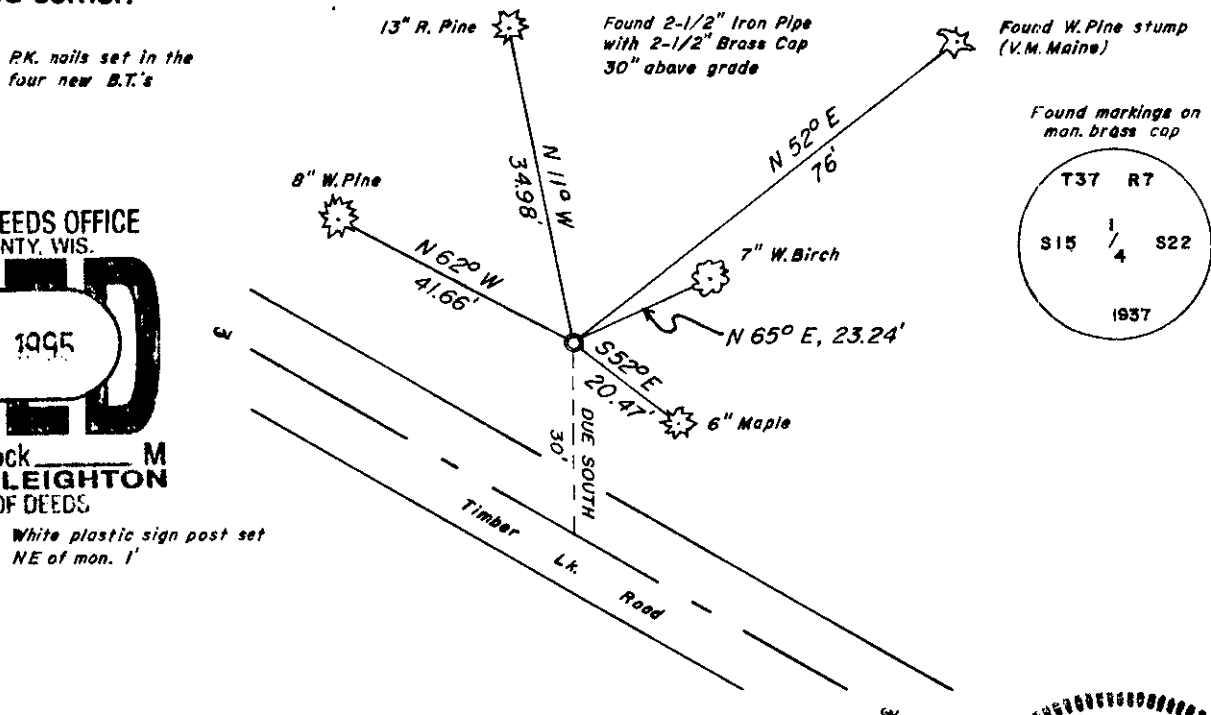
(a) Corner location: Township 37 North
 Range 7 East/West
 Town/City/Village Cassian
 County Oneida



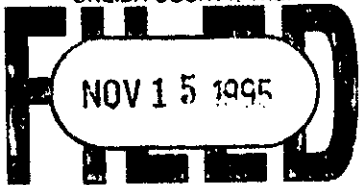
(b) (f) (g) (h) Description of monument found at this corner and if it was accepted, state all evidence (material, testimonial, occupational, plats, records, other monuments) used as a basis for accepting. If not accepted or if nothing was found, state evidence used as basis for establishing location. If reestablished through lost corner proportionate methods, indicate all monuments, distances and directions used to establish. Indicate type of monument found or set and sign post.

- Nov., 1869: Original surveyor, J. H. Jenkins set $\frac{1}{4}$ post and made following BT's:
 9" Aspen, S34°E, 7 lks
 10" Aspen, N32°E, 20 lks
 - June, 1936: V.M. Maine did not find $\frac{1}{4}$ corner. He single proportioned it's position and reset corner with 2 $\frac{1}{2}$ " iron pipe and brass cap and made following BT's:
 18" White Pine stump N74°W, 1.14 chains
 15" White Pine stump N48°E, 1.14 $\frac{1}{2}$ chains (75.57')
 - Sept., 1995: I found Maine's pipe and accepted it's position as being correct. I also found one of his stump BT's, made four additional BT's and set a plastic sign post.
- See sketch below for new BT's.

(c) (d) (e) Plan view of corner with ties to at least 4 witness monuments. If in disagreement with previously established corner, show the distances between the two corners and also indicate the ties to the disputed corner.



REGISTER OF DEEDS OFFICE
 ONEIDA COUNTY, WIS.

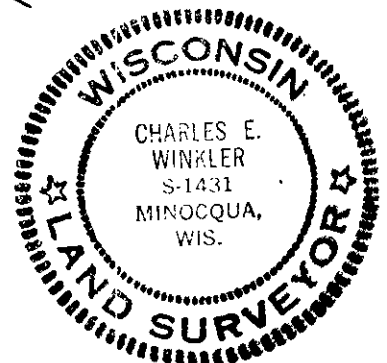


At O'Clock M
THOMAS H. LEIGHTON
 REGISTER OF DEEDS

White plastic sign post set
 NE of mon. 1'

(i) I, Charles E. Winkler S-1431
 (type or print name) certify that the corner location on this record was determined by me or under my direction and control and that this U.S. Public Land Survey Monument Record is correct and complete to the best of my knowledge and belief.

Charles E. Winkler 10-25-95
 Signature Foltz and Associates, Inc. Date



Index No. N-15

Stamp
 3707150020

JUN 12 2023

KYLE J. FRANSON
REGISTER OF DEEDS

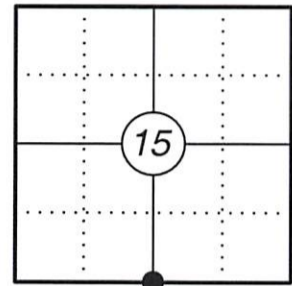
U.S. PUBLIC LAND SURVEY MONUMENT RECORD

This form is intended and designed to fulfill all requirements of Wisconsin Administrative Code, Chapter A-E 7.08 U.S. Public Land Survey Monument Record (3) (a)(b)(c)(d)(e)(f)(g)(h)(i). An additional sheet may be added if necessary to confirm with said requirements.

(a) Corner Location:

S 1/4 Corner Section 15
Township 37 North
Range 7 East
Town of Cassian
County of Oneida

Corner ID: 3707150020



(b) History of Original Corner:

Original Surveyor: J. H. Jenkins
Date of Survey: November, 1869.

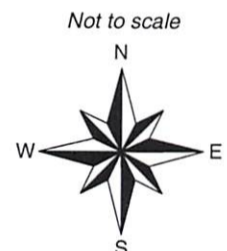
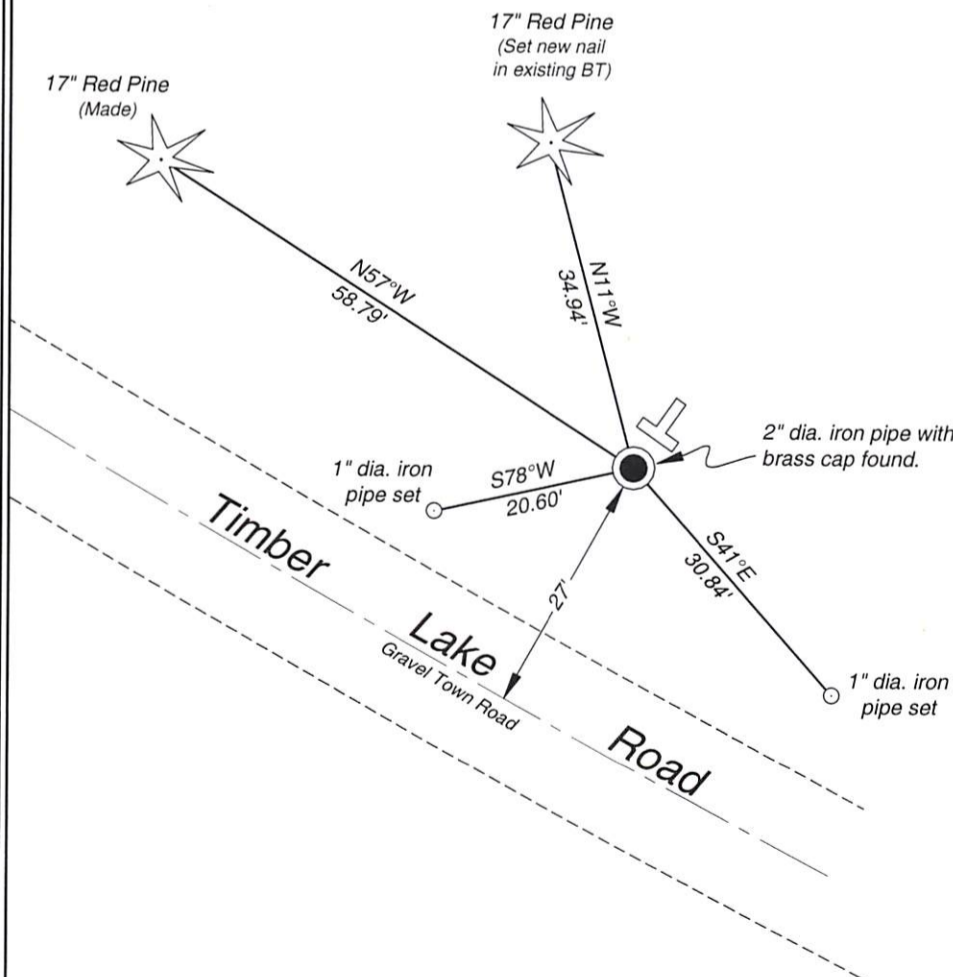
Original B.T.'s: 9" Aspen - S 34° E, 7 Links
10" Aspen - N 32° E, 20 Links

(f)(g)(h) Description of monument found at this corner and if it was accepted, state all evidence (material, testimonial, occupational, plats, records, other monuments) used as a basis for establishing location. If reestablishing through lost corner proportionate methods, indicate all monuments, distances, and directions used to establish. Indicate type of monument and sign post found or set.

For corner history, see previous U.S. Public Land Survey Monument Record by Charles E. Winkler, dated October 25, 1995.

03/28/2023 - I found and accepted a 2" dia. iron pipe with a brass cap 24" above grade at the corner location northerly of Timber Lake Road. I found one existing Bearing Tree, made one new Bearing Tree and set two iron pipes to witness the corner as shown below.

(c)(d)(e) Plan view of corner with ties to at least four witnesses. If in disagreement with previously established corner, show the distances between the two corners and also indicate the tie to the disputed corner.



- * Vinyl "T" post 1.0' N35°E, 1.2' from corner.
- * Distances to bearing trees are to nail in side.



Certification

I, Gregory S. Maines, Professional Land Surveyor No. 2729, hereby certify that the corner location on this record was referenced by me or under my direction and control and that this U.S. Public Land Survey Monument Record is complete to the best of my knowledge and belief.
REF: 2023087

Index No.: N-15