

U.S. PUBLIC LAND SURVEY MONUMENT RECORD

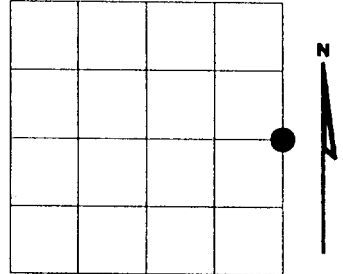
NOTE: This form is intended and designed to fulfill all requirements of Wisconsin Administrative Code, Chapter A-E 7.08 U.S. Public Land Survey Monument Record (3)(a)(b)(c)(d)(e)(f)(g)(h)(i). An additional sheet may be added if necessary to conform with said requirements.

(a) Corner location: Township 35 North

Range 08 East

Town of HARRISON

LINCOLN County, Wisconsin



Section 12

(b)(f)(g)(h) Description of monument found at this corner and if it was accepted, state all evidence (material, testimonial, occupational, plats, records, other monuments) used as a basis for accepting. If not accepted or if nothing was found, state evidence used as basis for establishing location. If reestablished through lost corner proportionate methods, indicate all monuments, distances and directions used to establish. Indicate type of monument found or set and sign post.

1859 - Original corner set by H.C. Fellows

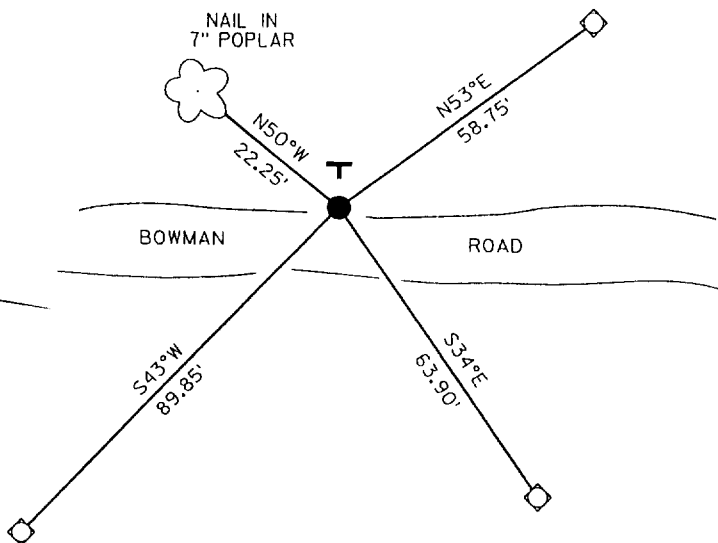
2003- I found 2" dia. iron pipe, 20' North of centerline, plastic sign post North 0.2', painted blue line North.

Witnessed as shown below.

Copy from Lincoln County 7/26/04

(c)(d)(e) Plan view of corner with ties to at least 4 witness monuments. If in disagreement with previously established corner, show the distances between the two corners and also indicate the ties to the disputed corner.

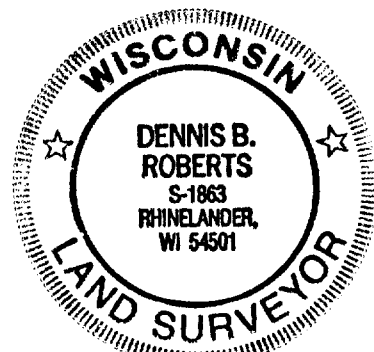
RECEIVED AT LINCOLN COUNTY
COURTHOUSE THIS 11TH DAY
OF June 20 03
Tommy Diller
LAND INFORMATION OFFICE



- 2" DIA. IRON PIPE FOUND
- ◇ SET 3/4" DIA. ROD WITH ALUMINUM CAP
- T PLASTIC "T" SIGN POST NORTH 2'

(i) I, Dennis Roberts, Registered Land Surveyor #S-1863, hereby certify that the corner location on this record was determined by me or under my direction and control and that this U.S. Public Land Survey Monument Record is correct and complete to the best of my knowledge and belief.

Dennis B. Roberts _____ 5/29/03
Signature Date

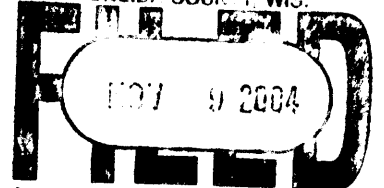


3508122000

Index No. 6-7

This form is intended to fulfill the requirements of Chapter A-E7.06 (3)(a) thru (i) U.S. Public Land Survey Monument Location Record, Wisconsin Administrative Code. Use the reverse side of form for continuation.

REGISTER OF DEEDS OFFICE
ONEIDA COUNTY, WIS.



At _____ lock _____ M
THOMAS M. LEIGHTON
REGISTER OF DEEDS

U.S. PUBLIC LAND SURVEY MONUMENT LOCATION RECORD

USPLS CORNER: WEST 1/4 SECTION: 7 TOWNSHIP: 35 NORTH RANGE: 9 EAST

NAME OF WATERWAY FOR M.C. CORNER: N/A SECTION LINE: N/A

(CITY)(VILLAGE)(TOWN) OF: ENTERPRISE COUNTY OF: ONEIDA

Description of monument found or placed and all other evidence used as the basis for monument location; including monuments and measurements required if the corner location was reestablished by lost corner proportionate methods. Also indicate name of the original surveyor, original survey date and the corner monument, bearing trees, witness or other reference monuments established, including measured bearing and distance ties, from available survey records.

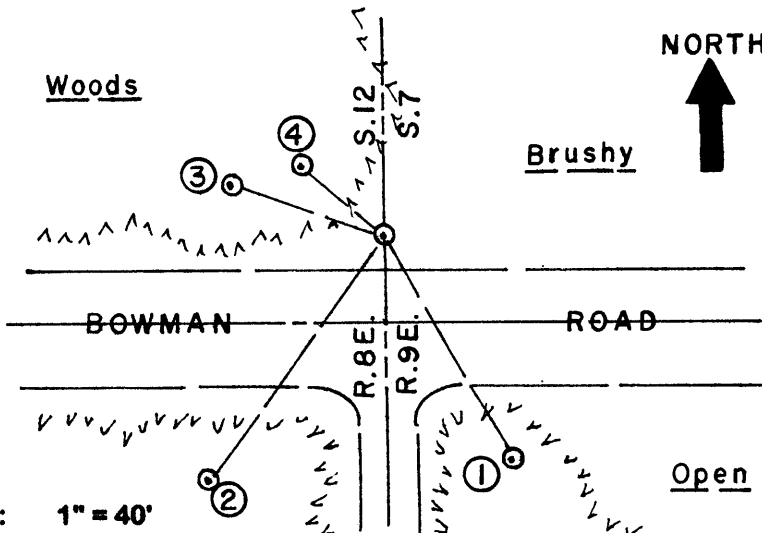
I found an old rusted off 2" dia. iron pipe flush, plumb and secure in a cairn of rocks at grade. I carefully removed rocks and old iron pipe with a flanged soil anchor bottom and replaced it with a standard 2" dia. by 30" long aluminum pipe monument with stamped Oneida County cap 8" above grade due to refusal below grade and replaced cairn of rocks to secure monument for new ties. The corner falls about 18' North of the centerline of existing gravelled East/West road. I also found the remains of an old log weighted white poly aerial photo panel centered at the corner which I removed and piled on grade NW of the corner.

In July 1859, H.C. Fellows/GLO set a wood post as original corner and noted OBTs: an 8" Fir S61°W 7 links and a 7" Aspen S74°E 12 links; all now obliterated with roadway corridor.

In March 1936, Maine set an official iron pipe monument with stamped brass cap as 1/4 corner midway on a right line between opposite section corners, 41.555 chains each way, and noted new BTs: a 6" Elm N54°E 0.64 chains and a 5" Linden N09°E 73 links, per field notes in Oneida County survey records; both Bts not found this date. By comparison, Maine also noted town road at 41.26 chains North of SW corner of Section 7, which would be about 19.5' South of his iron pipe at the 1/4 corner versus about 18' this date. This corner location previously located by GPS control survey at 2738.29' North of SW section corner and 2739.35' South of NW section corner per Oneida County survey records.

This recovery completed July 15, 2004; there were no direct witnesses other than an ATV drive by.

Plan view map of monument location with bearing and distance ties to a minimum of four(4) described witness or reference monuments of concrete, natural stone, iron, live bearing trees or equivalent material. If applicable, also show a minimum of two(2) bearing and distance ties to any other monument found and not accepted; including the bearing and distance from the accepted monument.



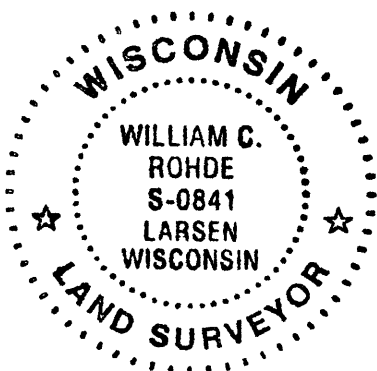
WITNESS MONUMENT TIES:

- ① New 7.5" Aspen BT S30°E 54.10'.
- ② New 12" Aspen BT S35°W 63.41'.
- ③ New 9" Basswood BT N70°W 34.00'.
- ④ Old 8" Aspen BT with upper & lower face blazes open and an old 40d spike 42" up in left face, N50°W 22.30' to PK/W in right face.

Standard white poly 'T' post found in old iron pipe reset 12" South of the new monument. I painted old BT blazes and flagged monument, T post & new BTs with blaze orange tape.

Unless otherwise indicated, all bearing tree ties are to a .25" dia. by 2.5" long PK nail with a 1.25" dia. steel washer driven into unblazed right face and a .25" dia. by 2.5" long PK nail with a 2" dia. steel washer stamped BT is also driven into unblazed face of bearing tree at DBH; the basis for measured bearings is by compass to nearest degree and all tie distances are measured horizontal by steel tape corrected to nearest 1/100th feet at standard temperature of 68° F.

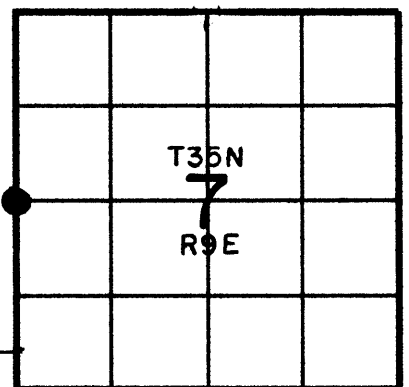
RLS SEAL:



LAND SURVEYOR CERTIFICATE:

I, William C. Rohde, hereby certify that I am duly licensed as a Professional Land Surveyor in the State of Wisconsin; that this USPLS monument location was determined by me and/or under my direct supervision and control; and that this U.S. Public Land Survey Monument Location Record is true and correct to the best of my knowledge and belief.

Signed: *William C. Rohde*
William C. Rohde RLS 841



SECTION LOCATION MAP

INDEX NO. 6-1

3508122000