

CERTIFIED LAND CORNER RESTORATION

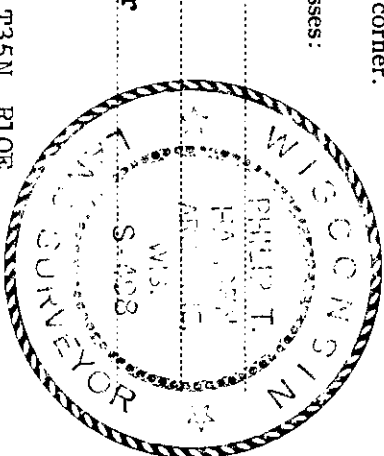
Index No. **C-1**

State of Wisconsin } ss.  
 County of Oneida

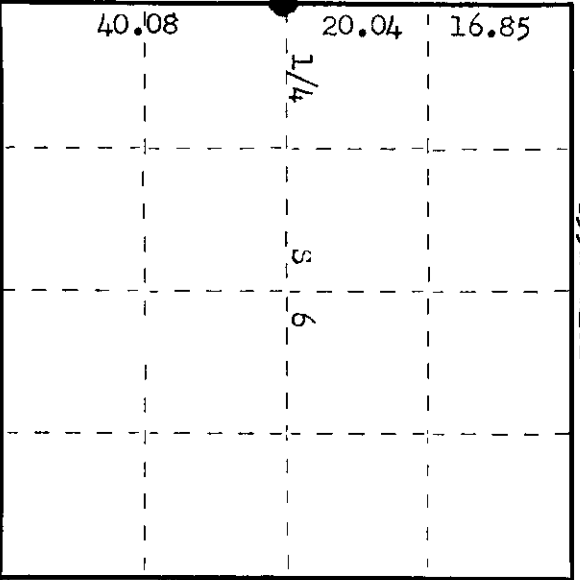
I Philip T. Hansen, do hereby certify that on the 1st day of April, 1976, I found evidence of the Quarter corner of Section 1 and 6 Township 35, North, Range 9 & 10 East, Fourth Principal Meridian, as described hereon; and that from this evidence I established a new monument and accessories as described hereon to perpetuate the original location of this corner.

Resident witnesses:

- Glen Barker
- Jim Clafin
- Herb Wagoner



T35N R10E



○ = Corner monument restored.

History of original corner establishment: Original corner established by Hiram C. Fellows, Deputy Surveyor, in 1859, from which Hemlock 12" bears  $N40^{\circ}E$  5 lks, Hemlock 9" bears  $N30^{\circ}W$  7 lks. Corner recovered by D. H. Vaughan, County Surveyor, in 1899, set new post from original BTs. Corner re-established by Ripco Surveyors (Drivas) corner had been destroyed by road relocation. Set by proportion from section corner & S 1/16 corner, CBTs - Hemlock 12" N  $60^{\circ}E$  77.8 lks, Maple 14" N  $74^{\circ}E$  66 lks, Hemlock 14" N  $81^{\circ}E$  54.75 lks, marked NBT, Y. Birch 6" S  $66^{\circ}W$  81.5 lks. Reference pipe set 1.10 chains east of corner and a reference post set 1 chain west of corner. Buried iron pipe in road for corner.

Description of corner evidence found: Recovered RR spike buried beneath surface of CRP "G" in center-line of road.  
 Recovered 2" aluminum pipe w/alum. cap 110 lks east of corner. A 4" cedar post squared and scribed 1 chain west.  
 Recovered Hemlock 12" (13") N  $60^{\circ}E$  (N  $61^{\circ}E$ ) 77.8 lks scribed 1/4" BT.  
 Maple 14" N  $74^{\circ}E$  (N  $75^{\circ}E$ ) 66 lks, scribing ~~grown~~ over.  
 Hemlock 14" (16") N  $81^{\circ}E$  (N  $84^{\circ}E$ ) 54.75 lks, scribing ~~grown~~ over.  
 Y. Birch 6" (7") S  $66^{\circ}W$  (S  $62^{\circ}W$ ) 81.5 lks, scribed 1/4" BT.  
 All pipe reference marks and BTs in good condition.

Description of monument and accessories I established to perpetuate the original location of this corner. as all accessories and corner was in good condition, no additional accessories were established. Reference post, pipe and BTs painted blue.

Dated at Rhinelander, Wis. this 20th day of May, 1976.

Signature Philip T. Hansen Title Registered Land Surveyor Registration No. S-498  
 (County Surveyor, Registered Land Surveyor, or other duly authorized official)  
 Office of Register of Deeds, County of Oneida 10th day of May, 1976  
 at 2:00 o'clock P. M. I hereby certify that the within instrument was filed in this office for record on the 10th day of May, 1976

Robert J. Page  
 (Register of Deeds)

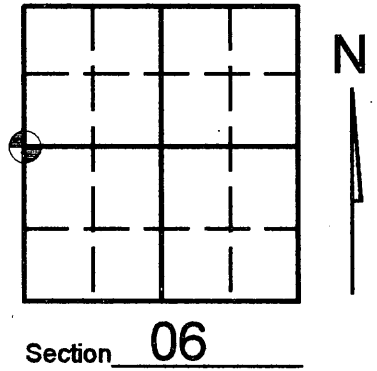
By \_\_\_\_\_ Deputy

3509012000

# U.S. PUBLIC LAND SURVEY MONUMENT RECORD

Note: This form is intended and designed to fulfill all requirements of Wisconsin Administrative Code, Chapter A-E 7.08 U.S. Public Land Survey Monument Record (3)(a)(b)(c)(d)(e)(f)(g)(h)(i). An additional sheet may be added if necessary to conform with said requirements.

(a) Corner location: Township 35 North  
 Range 10 (Eas/West)  
 Town/City/Village ENTERPRISE  
 County ONEIDA

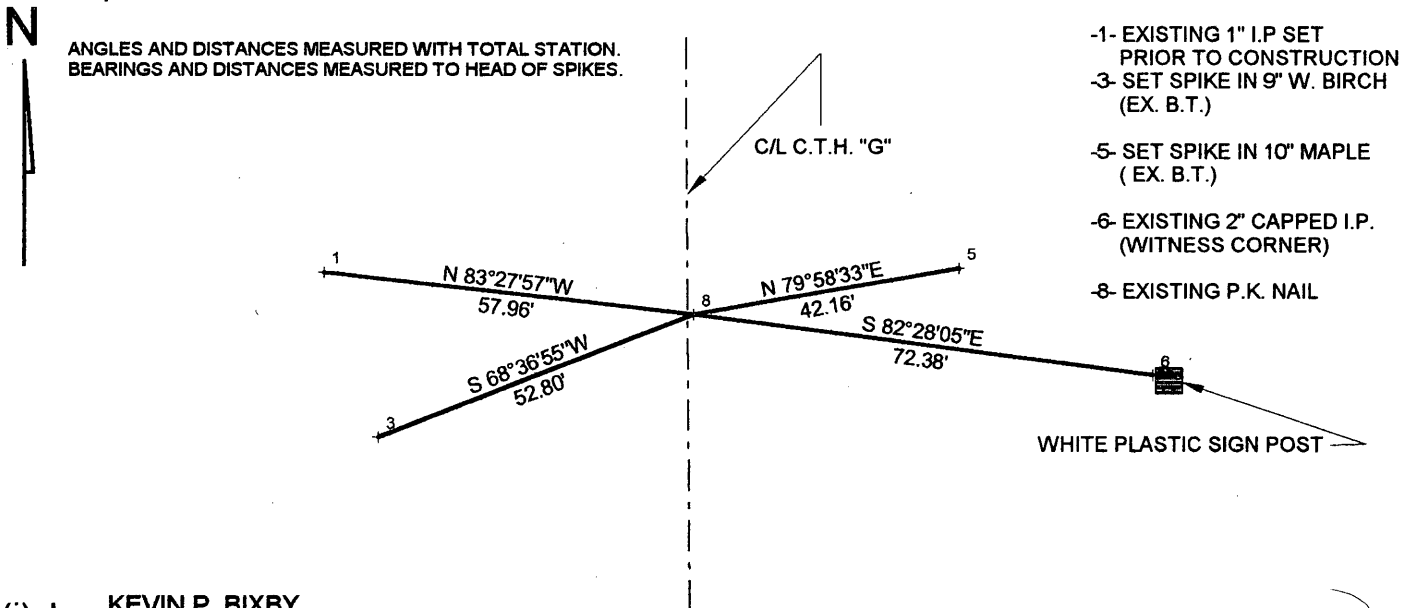


(b) (f) (g) (h) Description of monument found at this corner and if it was accepted, state all evidence (material, testimonial, occupational, plats, records, other monuments) used as a basis for accepting. If not accepted or if nothing was found, state evidence used as basis for establishing location. If reestablished through lost corner proportionate methods, indicate all monuments, distances and directions used to establish. Indicate type of monument found or set and sign post.

SEE CORNER RESTORATION FORM C-1 FOR HISTORY

-FEBRUARY 2005- Kevin Bixby found P.K. nail set by others after construction of County Hwy. "G". Witnessed said p.k. as shown below.

(c) (d) (e) Plan view of corner with ties to at least 4 witness monuments. If in disagreement with previously established corner, show the distances between the two corners and also indicate the ties to the disputed corner.



(i) I, KEVIN P. BIXBY  
 (type or print name) certify that the corner location on this record was determined by me or under my direction and control and that this U.S. Public Land Survey Monument Record is correct and complete to the best of my knowledge and belief.



Index No. C 25

Kevin P. Bixby  
 Signature Date 02/06/05

Stamp  
 3509012000

APR 17 2017

U.S. PUBLIC LAND SURVEY MONUMENT RECORD

AT \_\_\_\_\_ O'CLOCK \_\_\_\_\_ M  
KYLE J. FRANSON  
REGISTER OF DEEDS

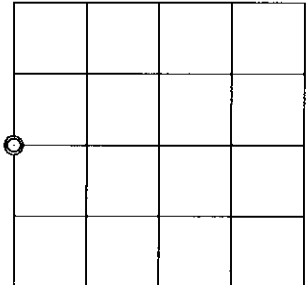
Note: This form is intended and designed to fulfill all requirements of the Wisconsin Administrative Code, Chapter A-E 7.08 U.S. Public Land Monument Record (3)(a)(b)(c)(d)(e)(f)(g)(h)(i). An additional sheet may be added if necessary to conform with said requirements.

(a) CORNER LOCATION: **WISCRS - Oneida County**  
**West Quarter Corner of Section 6**  
 Township 35 North  
 Range 10 East  
 Town of Enterprise  
 County of Oneida

**North: 132293.490 USft**  
**East: 292774.278 USft**  
**Latitude: 45°32'55.07937" N**  
**Longitude: 89°17'57.99764" W**  
**Datum: NAD 83(2011)**  
**GNSS Method: RTK - Direct**  
**GNSS Control: WISCORS VRS**  
**Record North: 132293.43 USft**  
**Record East: 292774.28 USft**  
**Record Datum: NAD 83(2011)**

(RECORDING AREA)

SECTION 6



(b) HISTORY OF ORIGINAL CORNER ESTABLISHMENT

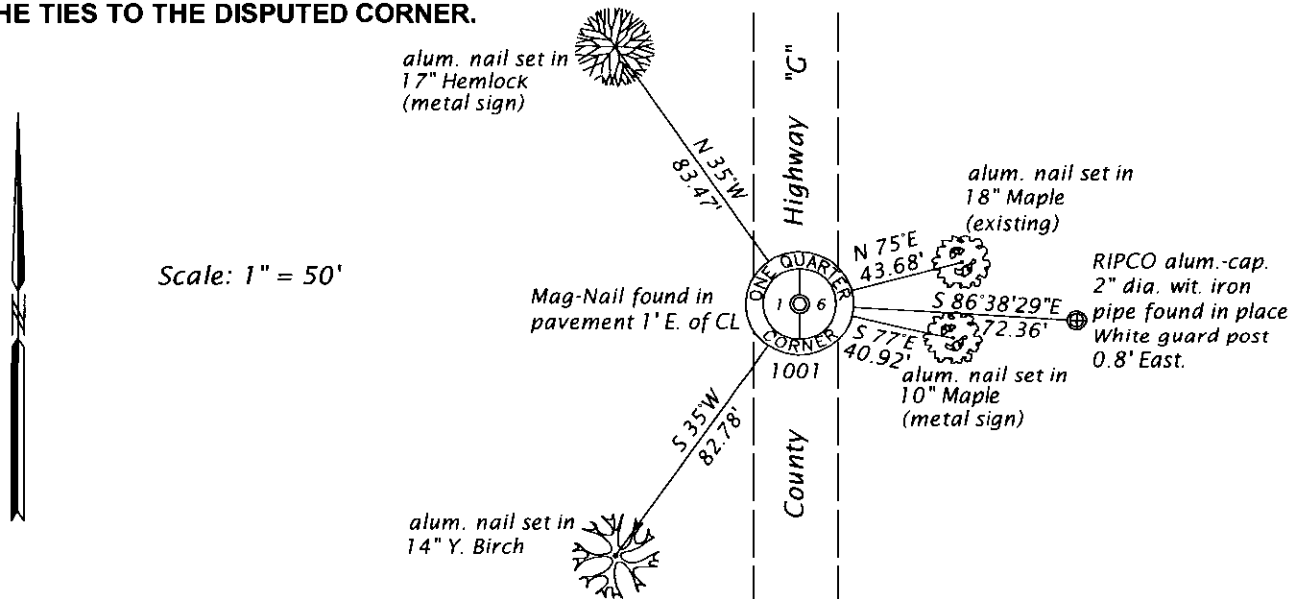
Original Surveyor: Hiram C. Fellows  
 Date of Survey: Commenced 1859  
 Completed 1859  
 Original B.T.'S: Hemlock 20" S 60°E 10 lks.  
 Hemlock 10" S 60°W 12 lks.

(f)(g)(h) DESCRIPTION OF MONUMENT FOUND AT THIS CORNER AND IF IT WAS ACCEPTED, STATE ALL EVIDENCE (MATERIAL, TESTIMONIAL, OCCUPATIONAL, PLATS, RECORDS, OTHER MONUMENTS) USED AS A BASIS FOR ESTABLISHING LOCATION. IF NOT ACCEPTED OR IF NOTHING WAS FOUND, STATE EVIDENCE USED AS BASIS FOR ESTABLISHING LOCATION. IF REESTABLISHED THROUGH LOST CORNER PROPORTIONATE METHODS, INDICATE ALL MONUMENTS, DISTANCES AND DIRECTIONS USED TO ESTABLISH. INDICATE TYPE OF MONUMENT AND SIGN POST FOUND OR SET.

December 20, 1897 - B. F. Dorr, County Surveyor, (Old Field Book 4A, page 37, in Sec. 6, T35N, R10E) searched and found nothing.  
 June 4, 1899 - D. H. Vaughan, County Surveyor, (Dorr / Vaughan Book, page 298, in Sec. 6, T35N, R10E) found both original trees down. Set new post.  
 August 1, 1935 - V. Maine, County Surveyor, (Maine Book 1, page 55, in Sec. 1, T35N, R9E) 39.985 chains (2639.01 ft.) north of southeast Section Corner, recovered D.H.V.'s stake in ctr. C. T. "G", and his Soft Mpl. 20" N68°E, .65 ch. (42.90 ft.). Set Official iron pipe, brass cap, stpd with steel dies; offset 32 lks. (21.12 ft.) East. Marked B.T.'s: Hem. 6" N53°E, 70 lks. (46.20 ft.); Hem. 8", N75°E, 53.75 lks. (35.475 ft.).  
 {Continued on reverse side}

The coordinate value shown has been verified by at least one of the following methods: 1) comparison to a previously GPS determined published value; 2) the value is the average of two or more GPS observations at a markedly different time; 3) one or more distances were measured back to the GPS observed corner from temporary GPS observed offset locations.

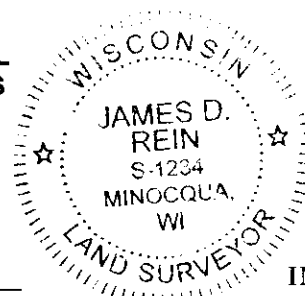
(c)(d)(e) PLAN VIEW OF CORNER WITH TIES TO AT LEAST 4 WITNESS MONUMENTS. IF IN DISAGREEMENT WITH PREVIOUSLY ESTABLISHED CORNER, SHOW THE DISTANCE BETWEEN THE TWO CORNERS AND ALSO INDICATE THE TIES TO THE DISPUTED CORNER.



(i) I, JAMES D. REIN, PROFESSIONAL LAND SURVEYOR NO. S-1234 HEREBY CERTIFY THAT THE CORNER LOCATION ON THIS RECORD WAS DETERMINED BY ME OR UNDER MY DIRECTION AND CONTROL AND THAT THIS U.S. PUBLIC LAND SURVEY MONUMENT RECORD IS CORRECT AND COMPLETE TO THE BEST OF MY KNOWLEDGE AND BELIEF.

*[Handwritten Signature]*  
 SIGNATURE

4-10-17  
 DATE



INDEX NO. C-1  
 3509012000  
 OVER →

*{Continued from reverse side}*

*March, 1962 - Drivas & Crew, (RIPCO Book 4, pages 68 and 69, in Sec. 6, T35N, R10E), extended line north from southwest Section Corner through recovered S 1/16 Corner, iron pin in road 20.0437 ch. (1322.884 ft.), for total of 2645.768 ft., recovered old BT's. Hemlock 12" N60°E, 77.8 lks. (51.348 ft.); Maple 14" N74°E, 66 lks. (43.56 ft.); Hemlock 14" N81°E, 54.75 lks. (36.135 ft.); new BT. Y. Birch 6" S66°W, 81.5 lks. (53.79 ft.); ref. pipe 1.10 ch. (72.60 ft.) East; Ref. post; 1.00 chains (66.00 ft.) West.*

*December 10, 2005 - Todd J. Lofus, RLS No. S-1523, map of survey in Section 1, T35N, R9E, filed in county survey records as B5780, legends corner (SUBDIVISION MONUMENT SET) MAG NAIL, bt's in place.*

*December 31, 2015 - Michael J. Romportl, Professional Land Surveyor No. S-1624, map of survey in Section 1, T35N, R9E, filed in county survey records as B7849, identifies corner as Mag-Nail found.*

*March 23, 2017 - James D. Rein, Professional Land Surveyor No. S-1234, recovered Mag-Nail in pavement, 1 foot East of centerline County Highway "G". See plan view for recovered and new reference ties.*