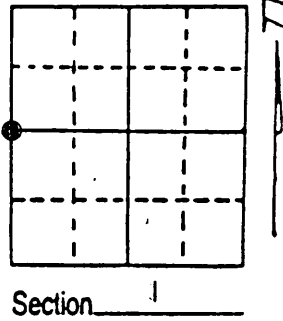


U.S. PUBLIC LAND SURVEY MONUMENT RECORD

Note: This form is intended and designed to fulfill all requirements of Wisconsin Administrative Code, Chapter A-E 7.08 U.S. Public Land Survey Monument Record (3) (a) (b) (c) (d) (e) (f) (g) (h) (i). An additional sheet may be added if necessary to conform with said requirements.

(a) Corner location: Township 35 North
 Range 9 East/West
 Town/City/Village Enterprise
 County Oneida



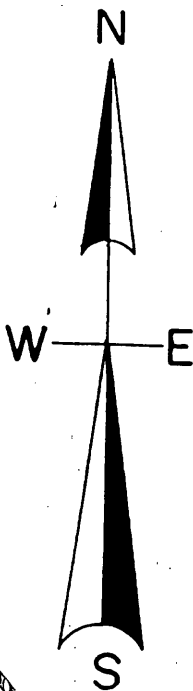
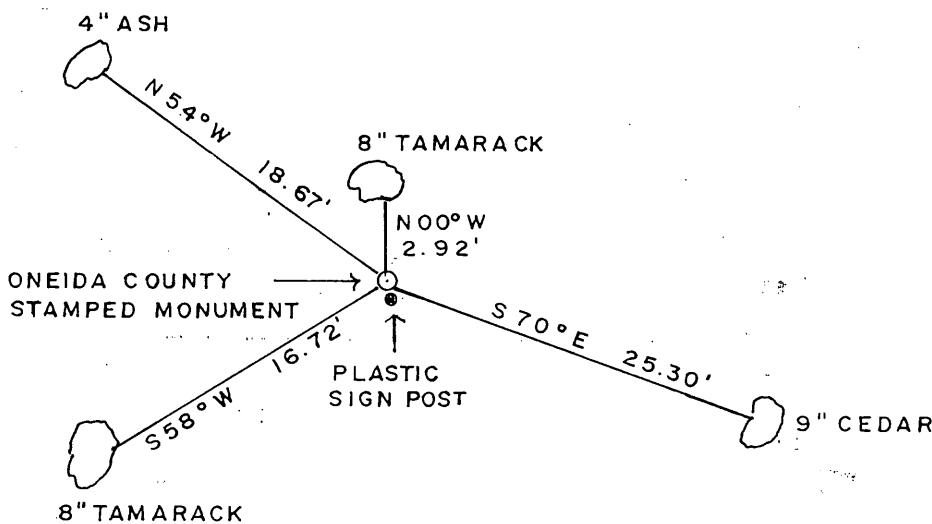
(b) (f) (g) (h) Description of monument found at this corner and if it was accepted, state all evidence (material, testimonial, occupational, plats, records, other monuments) used as a basis for accepting. If not accepted or if nothing was found, state evidence used as basis for establishing location. If reestablished through lost corner proportionate methods, indicate all monuments, distances and directions used to establish. Indicate type of monument found or set and sign post.

1864- J. L. Nowlin corrected South on true line between sections 1 & 2, set 1/4 section post at 39.15 chains and made two Bt's. Cedar 10, S 65 E, 20lks Cedar 8, S 44 W, 10lks

11/16/2004 - Todd J. Loftus found no evidence of corner or Bt's. Set Oneida County Monument, Bt's., plastic sign post using single proportion method. SEE BACK SIDE OF SHEET

(c) (d) (e) Plan view of corner with ties to at least 4 witness monuments. If in disagreement with previously established corner, show the distances between the two corners and also indicate the ties to the disputed corner.

Distances measured to spike in tree.
 Bearings taken by Hand Compass.
 No scale.



(i) I, Todd J. Loftus
 (type or print name) certify that the corner location on this record was determined by me or under my direction and control and that this U.S. Public Land Survey Monument Record is correct and complete to the best of my knowledge and belief.

Todd J. Loftus
 Signature Date 02/02/2005



3509022000

Stamp

Index No. C 21

35 36 SEC. COR.
RESTORATION SHEET Z-21

2 1

(ORIGINAL 39.15)

2468.48'

4990.56'

N0°01'07"W 1/4 COR.

(ORIGINAL 79.15)

2522.08'

2 1

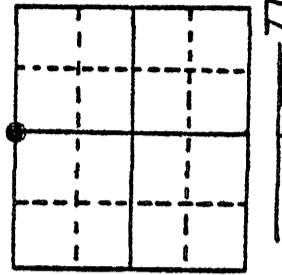
11 12

SEC. COR.
RESTORATION SHEET E-21

U.S. PUBLIC LAND SURVEY MONUMENT RECORD

Note: This form is intended and designed to fulfill all requirements of Wisconsin Administrative Code, Chapter A-E 7.08 U.S. Public Land Survey Monument Record (3) (a) (b) (c) (d) (e) (f) (g) (h) (i). An additional sheet may be added if necessary to conform with said requirements.

(a) Corner location: Township 35 North
 Range 9 East/West



Town/City/Village Enterprise
 County Oneida

Section 1

(b) (f) (g) (h) Description of monument found at this corner and if it was accepted, state all evidence (material, testimonial, occupational, plats, records, other monuments) used as a basis for accepting. If not accepted or if nothing was found, state evidence used as basis for establishing location. If reestablished through lost corner proportionate methods, indicate all monuments, distances and directions used to establish. Indicate type of monument found or set and sign post.

1864 - J.L. Nowlin corrected South on true line between sections 1 & 2, set 1/4 section post at 39.15 chains and made two BT's.

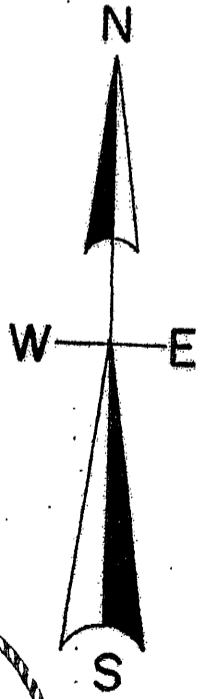
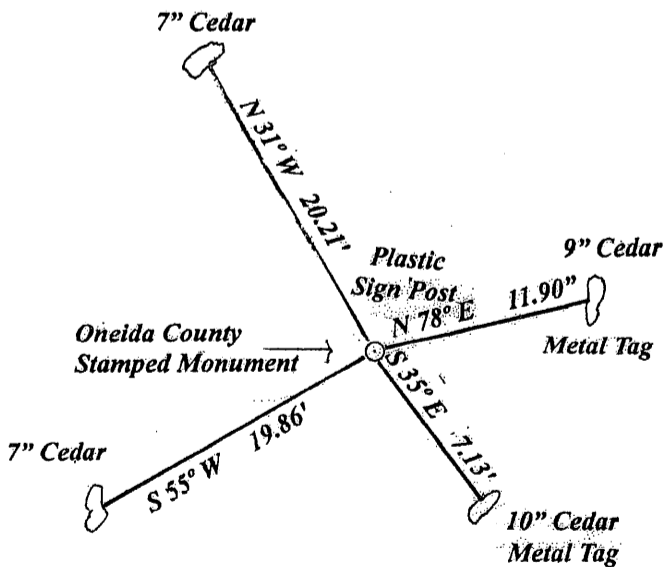
Cedar 10", S 65° E, 20lks Cedar 8", S 44° W, 10lks

11/16/2004 - I found no evidence of corner or Bt's.
 Set Oneida County Monument, Bt's, plastic sign post using single proportion method. See back side of sheet

While working in section 1 Oneida County Land Information crew located my corner and found it to be in a incorrect location due to an error in one of my traverse legs. They then set an iron rod in the correct location.
 5/15/2014 - I removed the Stamped County Monument that I had previously set and put it over the iron rod and made new Bt's as shown below.

(c) (d) (e) Plan view of corner with ties to at least 4 witness monuments. If in disagreement with previously established corner, show the distances between the two corners and also indicate the ties to the disputed corner.

Distances measured to spike in tree.
 Bearings taken by Hand Compass.
 No scale.



(i) I, Todd J. Loftus
 (type or print name) certify that the corner location on this record was determined by me or under my direction and control and that this U.S. Public Land Survey Monument Record is correct and complete to the best of my knowledge and belief.



Index No. C-21

Todd J. Loftus 6-13-2014
 Signature Date

REGISTER OF DEEDS OFFICE
ONEIDA COUNTY
FILED

OCT 09 2015

AT _____ O'CLOCK _____ M
KYLE J. FRANSON
REGISTER OF DEEDS

