

U.S. PUBLIC LAND SURVEY MONUMENT RECORD

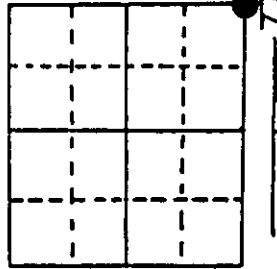
Note: This form is intended and designed to fulfill all requirements of Wisconsin Administrative Code, Chapter A-E 7.08 U.S. Public Land Survey Monument Record (3) (a) (b) (c) (d) (e) (f) (g) (h) (i). An additional sheet may be added if necessary to conform with said requirements.

(a) Corner location: Township 35 North

Range 9 East

Town Enterprise

County Oneida

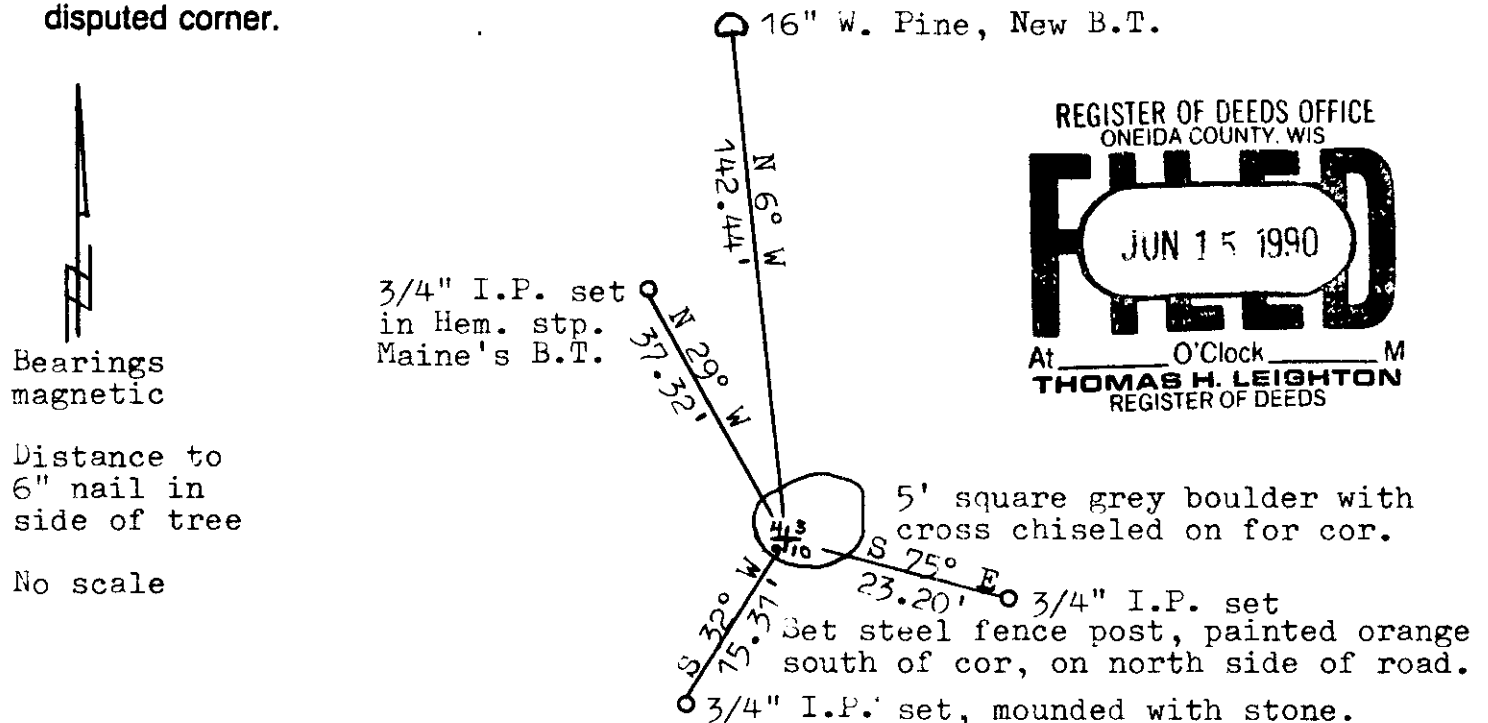


Section 9

(b) (f) (g) (h) Description of monument found at this corner and if it was accepted, state all evidence (material, testimonial, occupational, plats, records, other monuments) used as a basis for accepting. If not accepted or if nothing was found, state evidence used as basis for establishing location. If reestablished through lost corner proportionate methods, indicate all monuments, distances and directions used to establish. Indicate type of monument found or set and sign post.

- 1864 J.L. Noolin established original corner 80.00 set post to cor of Sec 3, 4, 9 & 10, Birch 10 S 54 W 10, Hemlock 9 N 53½ E , W. Pine 7 & Aspen 15.
- 28 Oct 1908 D.H. Vaughan found original Birch & Hemlock B.T.'s, now stumps, corner falls on large rock. Made new B.T. W. Pine 17 S 83° E 15½.
- 8 Sep 1936 V.M. Maine found original B.T. It is down scribe partially on it S 53° E 22 & Vaughan's B.T., now a stump. This corner is on a 5' square grey boulder. Chiseled large cross on it with figures of sections common to. Marked B.T.'s Hemlock 12 N 31° W 56 & Hemlock 12 N 55° W 65½.
- 4 Nov 1989 I found the large grey boulder with cross chiseled on it. The cross & figures are very plain, but lower portion of figure 9 is broken off. Cross is on SW cor. of boulder which is fairly flat. Also found stump of Hemlock 12 N 31° W 56. Witnessed this corner as shown below.

(c) (d) (e) Plan view of corner with ties to at least 4 witness monuments. If in disagreement with previously established corner, show the distances between the two corners and also indicate the ties to the disputed corner.



(i) I, Lester J. Schmit R.L.S. 1192
 (type or print name) certify that the corner location on this record was determined by me or under my direction and control and that this U.S. Public Land Survey Monument Record is correct and complete to the best of my knowledge and belief.

Lester J. Schmit 7 Jun 90
 Signature Date



Index No. F - 13