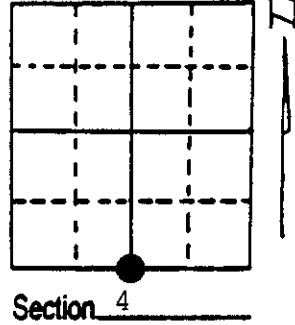


U.S. PUBLIC LAND SURVEY MONUMENT RECORD

Note: This form is intended and designed to fulfill all requirements of Wisconsin Administrative Code, Chapter A-E 7.08 U.S. Public Land Survey Monument Record (3) (a) (b) (c) (d) (e) (f) (g) (h) (i). An additional sheet may be added if necessary to conform with said requirements.

(a) Corner location: Township 35 North
 Range 9 East/West

Town/City/Village Enterprise
 County Oneida



(b) (f) (g) (h) Description of monument found at this corner and if it was accepted, state all evidence (material, testimonial, occupational, plats, records, other monuments) used as a basis for accepting. If not accepted or if nothing was found, state evidence used as basis for establishing location. If reestablished through lost corner proportionate methods, indicate all monuments, distances and directions used to establish. Indicate type of monument found or set and sign post.

1864 - James Nowlin established this corner and set a wood post:
 56" Y. Pine, N64°E, 38 Links 8" Aspen, S58°E, 7 Links

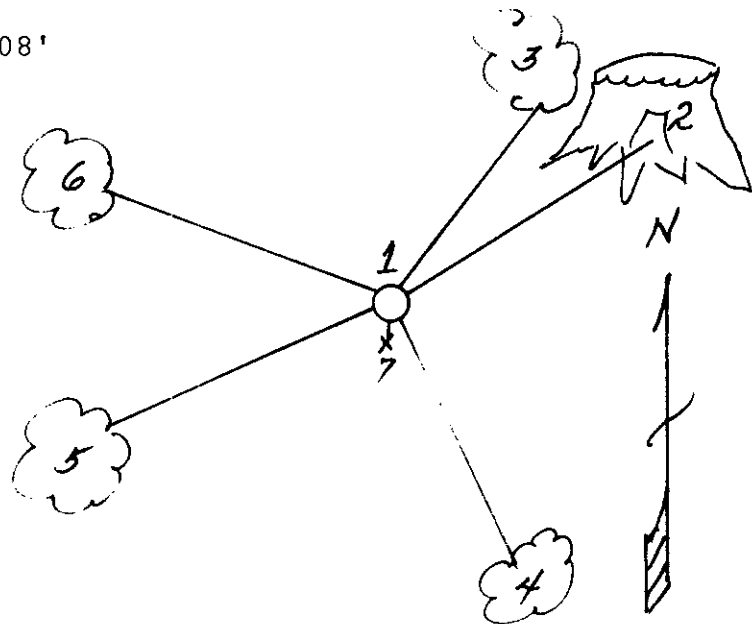
10/27/1908 - Vaughan set new post and one new BT:
 16" W. Pine, S9°E, 39 3/4 Links

1/30/1990 - Milo E. Stefan and Rick Rowman found very large Red Pine stump (4' - 5') and stump hole for Vaughan's 16" White Pine.
 Distance to swamp call West, 3.90 chains, is in conformance to original notes by Nowlin. I accept this evidence and restore this corner by placing a 2" x 30" aluminum monument, taking four new BTs and setting a plastic sign post.

(c) (d) (e) Plan view of corner with ties to at least 4 witness monuments. If in disagreement with previously established corner, show the distances between the two corners and also indicate the ties to the disputed corner.

- 1) 2" x 30" Aluminum Oneida County Monument.
- 2) 4' - 5' Red Pine Stump, N64°E, 25.08'
- 3) 8" Sugar Maple, N50°E, 22.23'
- 4) 5" Sugar Maple, S24°E, 45.78'
- 5) 4" Red Maple, S72°W, 42.20'
- 6) 5" Sugar Maple, N78°W, 48.46'
- 7) Plastic sign post next to monument

Distances to nail in side of tree.
 BT stumps scribed and blazed "BT"



(i) I, Milo E. Stefan
 (type or print name) certify that the corner location on this record was determined by me or under my direction and control and that this U.S. Public Land Survey Monument Record is correct and complete to the best of my knowledge and belief.

Milo E. Stefan 2/2/90
 Signature Date



Stamp

Index No. E-11

U.S. PUBLIC LAND SURVEY MONUMENT RECORD

Note: This form is intended and designed to fulfill all requirements of Wisconsin Administrative Code, Chapter A-E 7.08 U.S. Public Land Survey Monument Record (3) (a)(b)(c)(d)(e)(f)(g)(h)(i). An additional sheet may be added if necessary to confirm with said requirements.

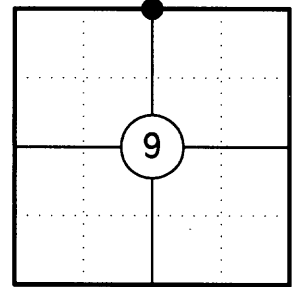
(a) Corner Location:

North 1/4 Corner Section 9
 Township 35 North
 Range 9 East
 Town of Enterprise
 County of Oneida

Oneida County ID No.: 3504090020

Oneida County Coordinates (NAD 83/2011):

N= 129427.59
 E= 273498.49



(b) History of Original Corner:

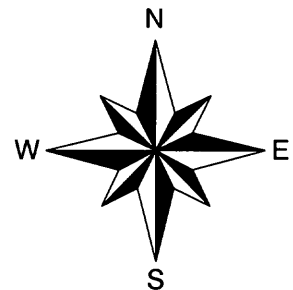
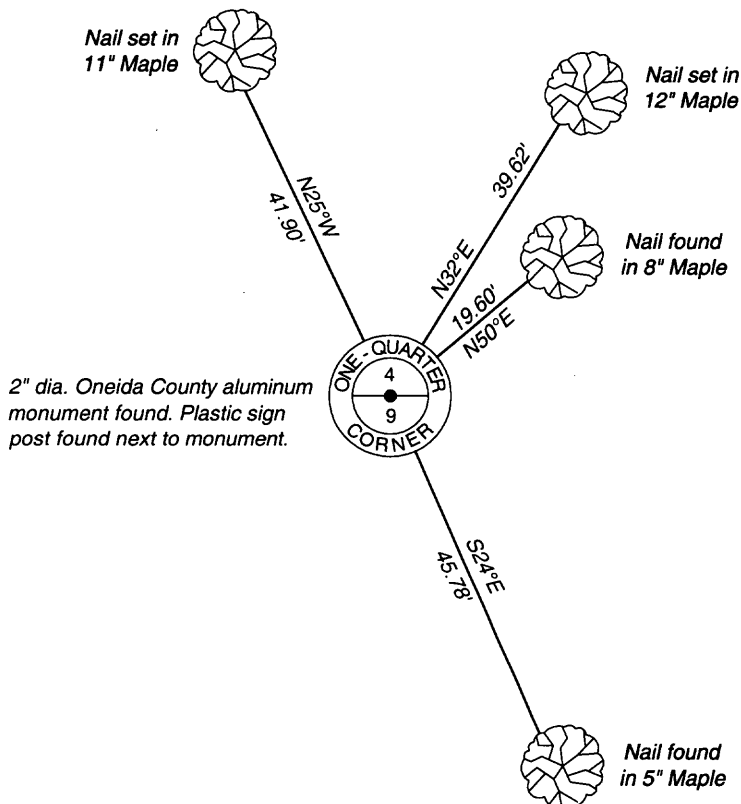
Original Surveyor: James L. Nowlin
 Date of Survey: October/November 1864

Original Bearing Trees: 56" Y. Pine - N64°E, 38 Links
 8" Aspen - S58°E, 7 Links

(f)(g)(h) Description of monument found at this corner and if it was accepted, state all evidence (material, testimonial, occupational, plats, records, other monuments) used as a basis for establishing location. If reestablishing through lost corner proportionate methods, indicate all monuments, distances, and directions used to establish. Indicate type of monument and sign post found or set.

- 1864: James L. Nowlin set the original 1/4 Corner post
- 10/27/1908: Vaughan set new post and one new bearing tree: 16" W. Pine, S09°E, 39.75 links
- 01/30/1990: Milo E. Stefan and Rick Rowman found a very large red pine stump (4' - 5') and stump hole for Vaughan's 16" white pine. Distance to swamp call west, 3.90 chains is in conformance to original notes by Nowlin. He accepted this evidence and restored this corner by placing a 2" x 30" aluminum monument and making four new bearing trees and setting a plastic sign post.
- 11/14/2014: I found and accepted a 2" dia. Oneida County aluminum monument stamped to identify the corner along with 2 bearing trees. I made two additional bearing trees to witness the corner.

(c)(d)(e) Plan view of corner with ties to at least four witnesses. If in disagreement with previously established corner, show the distances between the two corners and also indicate the tie to the disputed corner.

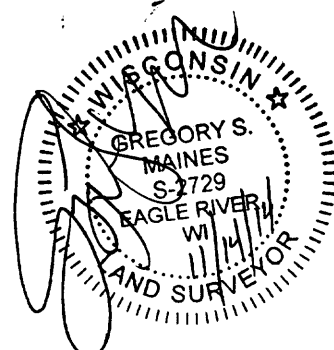


Sketch is not to scale
 Distances to nail in side of tree.

REGISTER OF DEEDS OFFICE
 ONEIDA COUNTY
 FILED

JAN 07 2015

AT _____ O'CLOCK _____ M
 KYLE J. FRANSON
 REGISTER OF DEEDS



Certification

I, Gregory S. Maines, Professional Land Surveyor No. 2729, hereby certify that the corner location on this record was referenced by me or under my direction and control and that this U.S. Public Land Survey Monument Record is complete to the best of my knowledge and belief.

3509040020