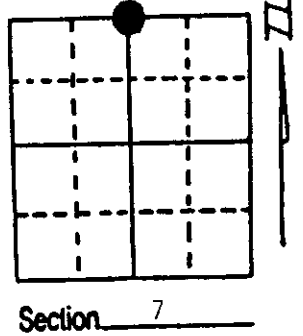


# U.S. PUBLIC LAND SURVEY MONUMENT RECORD

**Note:** This form is intended and designed to fulfill all requirements of Wisconsin Administrative Code, Chapter A-E 7.08 U.S. Public Land Survey Monument Record (3) (a) (b) (c) (d) (e) (f) (g) (h) (i). An additional sheet may be added if necessary to conform with said requirements.

(a) Corner location: Township 35 North  
 Range 9 East/West

Town/City/Village Enterprise  
 County Oneida



(b) (f) (g) (h) Description of monument found at this corner and if it was accepted, state all evidence (material, testimonial, occupational, plats, records, other monuments) used as a basis for accepting. If not accepted or if nothing was found, state evidence used as basis for establishing location. If reestablished through lost corner proportionate methods, indicate all monuments, distances and directions used to establish. Indicate type of monument found or set and sign post.

October 1864 - James Nowlin established this corner, set a wood post with two BTs:  
 6" Maple, N65°E, 10 Links (6.6') 8" Birch, S65°W, 15 Links (9.9')

1936 - Vern Maine restored corner by Lost Methods, set an iron pipe with two BTs:  
 10" W. Pine Stump, N58°E, 22 Links (14.52') 26" W. Pine Stump, West, 47½ Links (31.35')

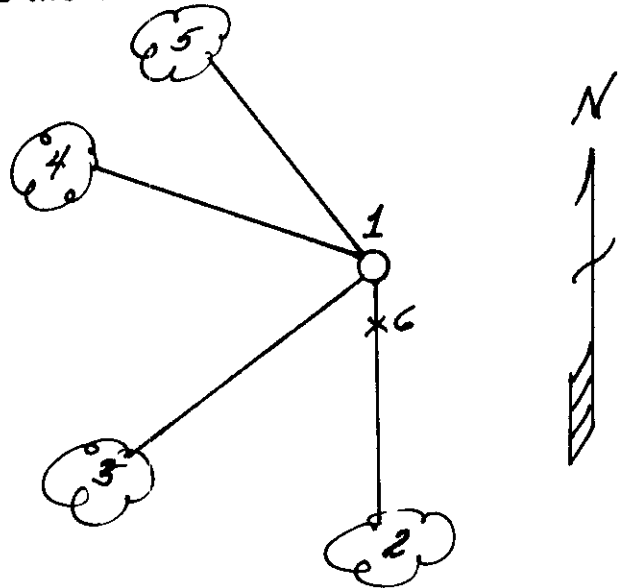
May 1995 - Milo E. Stefan could not locate Maine's monument. We, therefore, ran traverse between Maine's East 1/16 and West 1/16 and restored this corner by Lost Methods. We set new aluminum monument, made four new BTs and set plastic sign post.



(c) (d) (e) Plan view of corner with ties to at least 4 witness monuments. If in disagreement with previously established corner, show the distances between the two corners and also indicate the ties to the disputed corner.

- 1) 2" x 30" Aluminum Monument
- 2) 6" Red Maple, South, 98.73'
- 3) 6" Red Maple, S60°W, 97.83'
- 4) 6" Red Maple, N72°W, 57.69'
- 5) 4" White Pine, N48°W, 89.90'
- 6) Plastic Sign Post, South, 1.0'

Distances to nail in side of BTs.  
 Stump blaze scribed "BT".  
 BT tags placed on face of each BT.



REGISTER OF DEEDS OFFICE  
 ONEIDA COUNTY, WIS.  
**FILED**  
 MAY 23 1995  
 At \_\_\_\_\_ O'Clock \_\_\_\_\_ M  
**THOMAS H. LEIGHTON**  
 REGISTER OF DEEDS

(i) I, Milo E. Stefan  
 (type or print name) certify that the corner location on this record was determined by me or under my direction and control and that this U.S. Public Land Survey Monument Record is correct and complete to the best of my knowledge and belief.



Index No. E-3

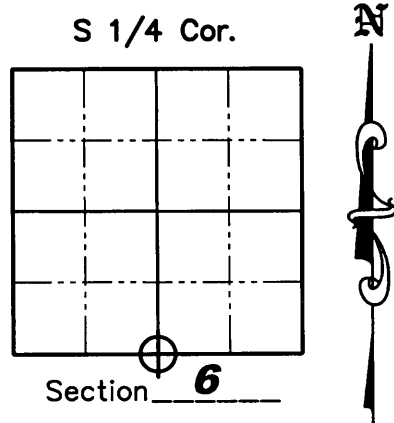
Milo E. Stefan Signature Date May 10, 1995

# U.S. PUBLIC LAND SURVEY MONUMENT RECORD

NOTE: This form is intended and designed to fulfill all requirements of Wisconsin Administrative Code, Chapter A-E 7 .08 U.S. Public Land Survey Monument Record (3)(a)(b)(c)(d)(e)(f)(g)(h)(i). An additional sheet may be added if necessary to conform with said requirements.

(a) Corner location: Township 35 North  
 Range 9 East/West  
 Town of Enterprise  
 County of Oneida

Oneida County Coordinates  
 N 129539.698  
 E 262715.502



(b)(f)(g)(h) Description of monument found at this corner and if it was accepted, state all evidence (material, testimonial, occupation, plats, records, other monuments) used as a basis for accepting. If not accepted or if nothing was found, state evidence used as a basis for establishing location. If reestablished through lost corner proportionate methods, indicate all monuments, distances and directions used to establish. Indicate type of monument found or set and sign post.

October/November 1864 - James Nowlin set original 1/4 post. BT's: 6" Maple, N65°E, 10 lks.; 8" Birch, S65°W, 15 lks.

January 14, 1910 - D.H. Vaughan ran South line of Section 6 and said 1/4 post gone. He set 1/4 post at 42.47 chains West of Southeast corner of Section 6. BT's: 7" Hemlock, N72-1/2°E, 34 lks.; 7" Cedar, S41°W 4 lks. (Field book #6, Page 126.)

August 19, 1936 - Maine found D.H. Vaughans old stake down and burned and his BT stumps viz; 7" Hemlock, N72-1/2°E, .34 lks; 7" Cedar, S41°W, 0.04 chains. He set official iron pipe, brass cap. BT's: 14" White Pine Stump, N01°E, 0.512 Chains; 30 White Pine Stump, N62°W, 0.951 Chains - (See Maine Field Book 1). In a different field book by Maine for the same date he says he found D.H. Vaughans old post down and burned along with two BT stumps. He then says he put in new Tamarck Post and new BT's: 10" White Pine stump, N58°E, 22 lks.; 26" White Pine stump, West, 47.5 lks - (See Main Field Book 1936).

May 10, 1995 - Milo E. Stefan could not locate Maine's monument. He therefore ran traverse between Maine's East 1/16 and West 1/16 and restored this corner by obliterated methods. He set new aluminum monument and made four new BT's and set plastic sign post.

May 6, 2008 - Matthew E. Hoglund found Stefan's aluminum monument and bearing trees. It was discovered in measuring to the SE corner of the SW 1/4 of the SW 1/4 and to the SE corner of the SW 1/4 of the SE 1/4 that there must have been a staking error by Stefan. Re-established corner position S 66°51'19" W, 26.15' from Stefan's monument by running a line from the SE Section corner through the SE corner of the SW 1/4 of the SE 1/4 and from the SW Section corner through the SE corner of the SW 1/4 of the SW 1/4. Moved aluminum monument to correct position as shown on the map on Sheet 2 hereof.

(c)(d)(e) Plan view of corner with ties to at least 4 witness monuments. If in disagreement with previously established corner, show the distances between the two corners and also indicate the ties to the disputed corner.

**SEE SHEET 2 HEREOF**

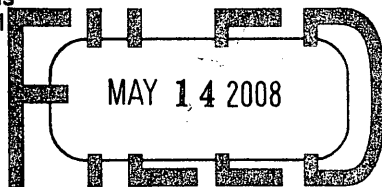
(i) I, Matthew E. Hoglund, certify that the corner location on this record was determined by me under my direction and control and that this U.S. Public Land Survey Monument is correct and complete to the best of my knowledge and belief.

*Matthew E. Hoglund*  
 Signature

MATTHEW E. HOGGLUND  
 S-1910  
 TOMAHAWK  
 WI  
 LAND SURVEYOR

5/13/2008  
 Date

REGISTER OF DEEDS OFFICE  
 ONEIDA COUNTY, WIS.

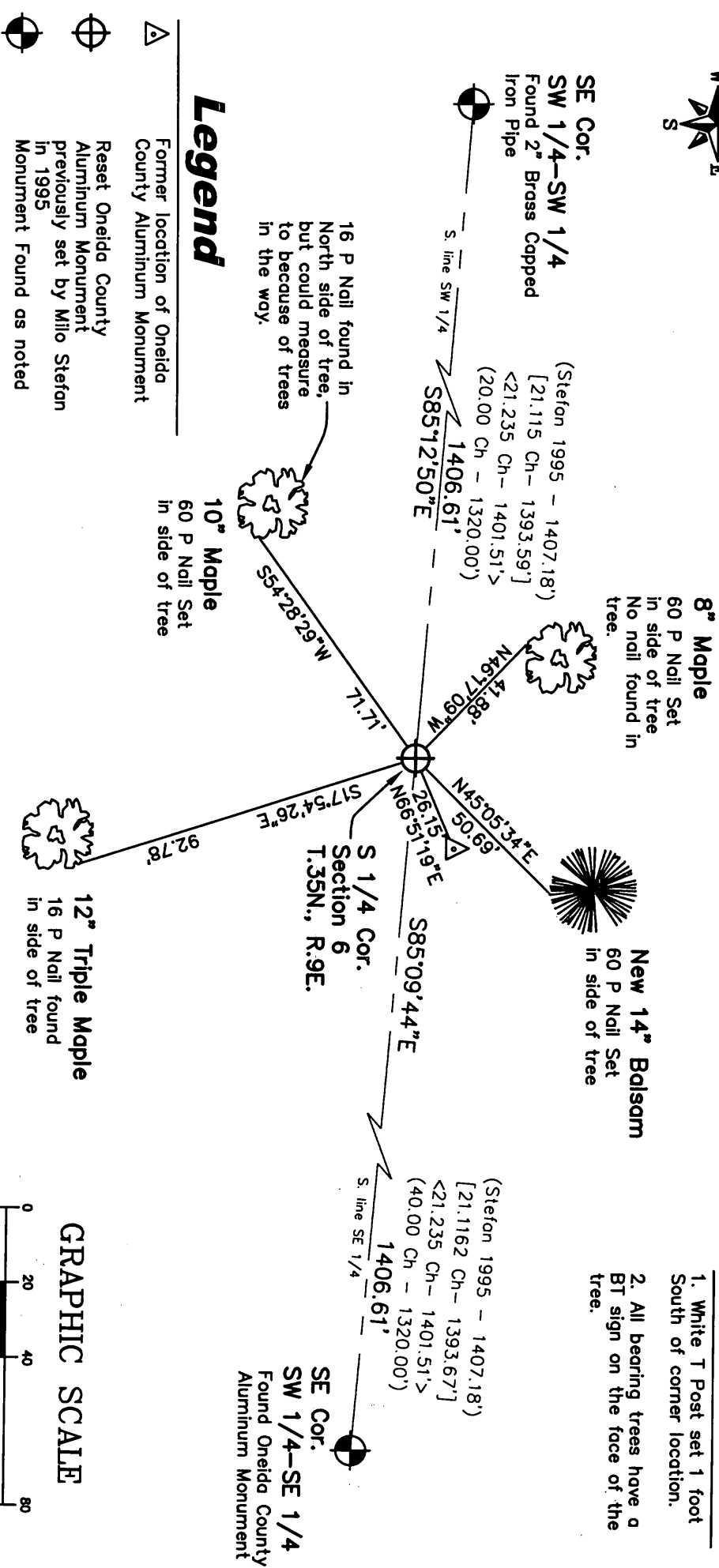


At \_\_\_\_\_ O'Clock \_\_\_\_\_ M  
 THOMAS H. LEIGHTON  
 REGISTER OF DEEDS

Sheet 1 of 2  
 3509060020

Index No E-3

# U.S. PUBLIC LAND SURVEY MONUMENT RECORD

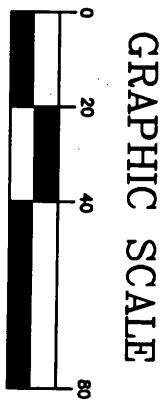


## Legend

- Former location of Oneida County Aluminum Monument
- Reset Oneida County Aluminum Monument previously set by Milo Stefan in 1995
- Monument Found as noted
- [46.73'] Record Dimensions per Maine 1936
- (46.73') Record Dimensions per GLO (Unless Otherwise Noted)
- <46.73'> Record Dimensions per DH Vaughan 1910

**Note**

1. White T Post set 1 foot South of corner location.
2. All bearing trees have a BT sign on the face of the tree.



**NICOLET SURVEYORS, INC.**  
56 South Brown Street, Rhineland, WI 54501  
715-362-2808  
715-362-4114 (FAX)  
Project No. 771