

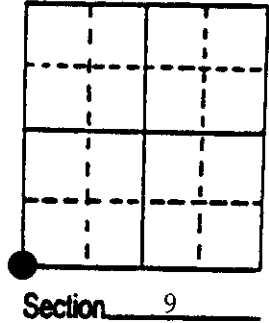
U.S. PUBLIC LAND SURVEY MONUMENT RECORD

Note: This form is intended and designed to fulfill all requirements of Wisconsin Administrative Code, Chapter A-E 7.08 U.S. Public Land Survey Monument Record (3) (a) (b) (c) (d) (e) (f) (g) (h) (i). An additional sheet may be added if necessary to conform with said requirements.

(a) Corner location: Township 35 North
Range 9 East/West

Town/City/Village Enterprise

County Oneida



(b) (f) (g) (h) Description of monument found at this corner and if it was accepted, state all evidence (material, testimonial, occupational, plats, records, other monuments) used as a basis for accepting. If not accepted or if nothing was found, state evidence used as basis for establishing location. If reestablished through lost corner proportionate methods, indicate all monuments, distances and directions used to establish. Indicate type of monument found or set and sign post.

1864 - James Nowlin established this corner and set a wood post with two BTs and two witness corners:

18" Cedar, N20°E, 15 Links 20" Cedar, S30°W, 17 Links
6" Cedar 22" Cedar

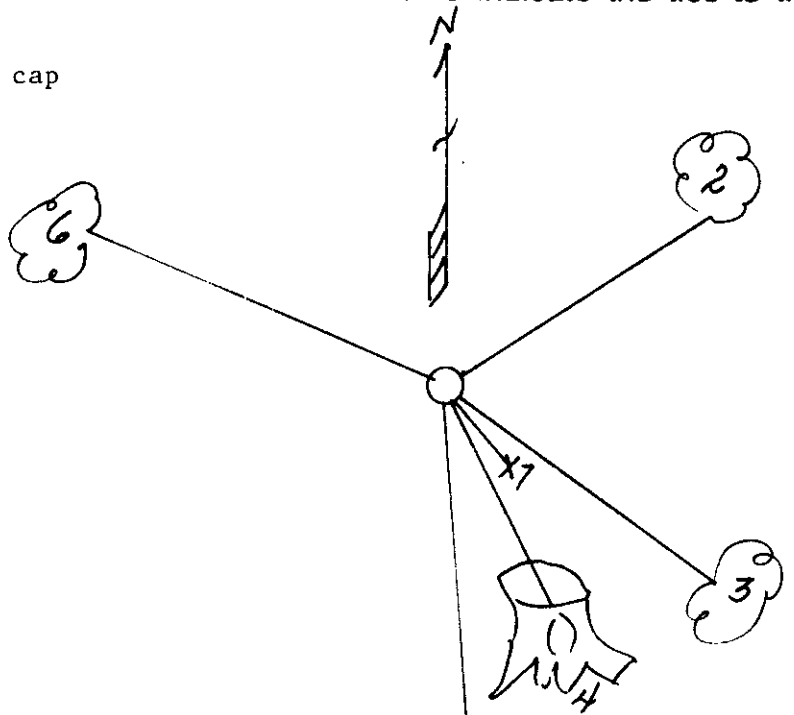
1932/33 - Hall found old post and original BTs. He placed a 6" x 6" x 36" concrete monument with brass cap and made a new BT: 28" Birch, S53°E, 16 Links

11/29/1989 - Milo E. Stefan found Hall monument lying down with Hall's BT (birch) cut down. We reset Hall's monument (in digging hole we recovered post point 5" long), made four new BTs and set plastic sign post.

(c) (d) (e) Plan view of corner with ties to at least 4 witness monuments. If in disagreement with previously established corner, show the distances between the two corners and also indicate the ties to the disputed corner.

- 1) 6" x 6" x 36" concrete monument/brass cap
- 2) 8" Cedar, N60°E, 49.79'
- 3) 18" Hemlock, S66°E, 58.55'
- 4) 30" Yellow Birch Stump, S53°E, 10.6'
- 5) 6" Red Maple, S25°E, 38.22'
- 6) 14" White Spruce, N80°W, 30.72'
- 7) Plastic sign post, southeast, 2.7'

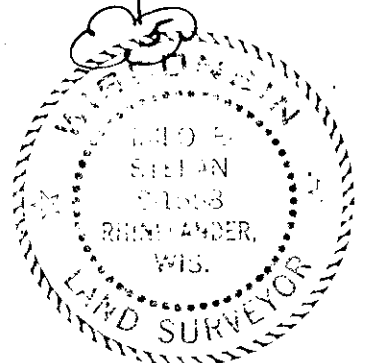
Distances to nail in side of BTs
Stump blaze scribed "BT"



(i) I, Milo E. Stefan
(type or print name) certify that the corner location on this record was determined by me or under my direction and control and that this U.S. Public Land Survey Monument Record is correct and complete to the best of my knowledge and belief.

Milo E. Stefan
Signature

11/30/89
Date



Index No. J-9

U.S. PUBLIC LAND SURVEY MONUMENT RECORD

Note: This form is intended and designed to fulfill all requirements of Wisconsin Administrative Code, Chapter A-E 7.08 U.S. Public Land Survey Monument Record (3) (a)(b)(c)(d)(e)(f)(g)(h)(i). An additional sheet may be added if necessary to confirm with said requirements.

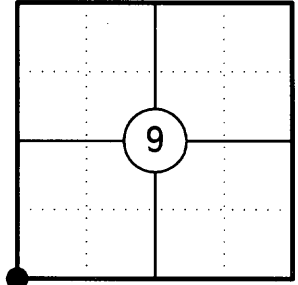
(a) Corner Location:

Southwest Corner Section 9
 Township 35 North
 Range 9 East
 Town of Enterprise
 County of Oneida

Oneida County ID No.: 3509080000

Oneida County Coordinates (NAD 83/2011):

N= 124110.04
 E= 270838.99



(b) History of Original Corner:

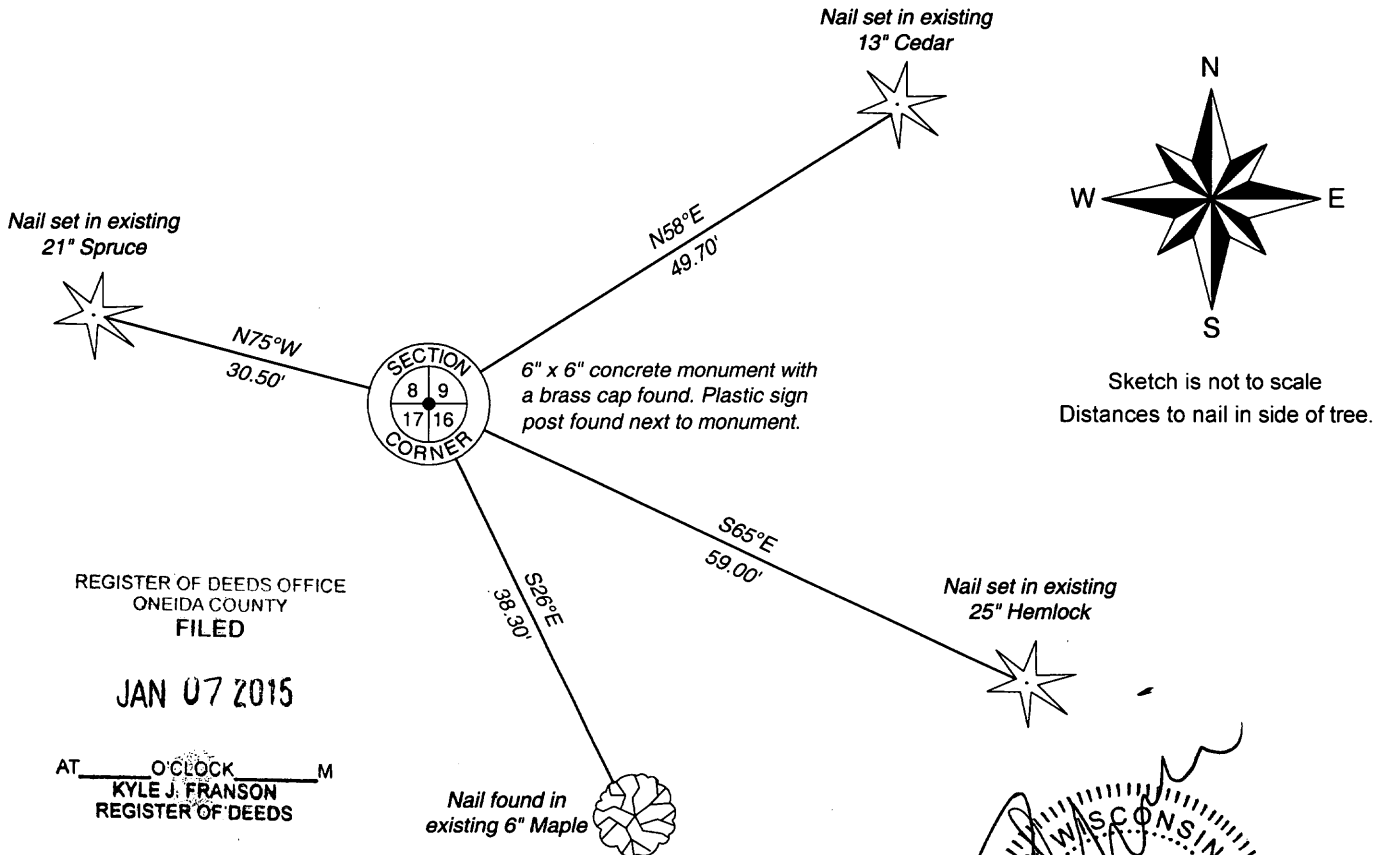
Original Surveyor: James L. Nowlin
 Date of Survey: October/November 1864

Original Bearing Trees: 18" Cedar - N20°E, 15 Links
 20" Cedar - S30°W, 17 Links
 16" Cedar - No Bearing or distance
 22" Cedar - No Bearing or distance

(f)(g)(h) Description of monument found at this corner and if it was accepted, state all evidence (material, testimonial, occupational, plats, records, other monuments) used as a basis for establishing location. If reestablishing through lost corner proportionate methods, indicate all monuments, distances, and directions used to establish. Indicate type of monument and sign post found or set.

- 1864: James L. Nowlin set the original Section Corner post
- 1932/1933: H.C. Hall found old post and original bearing trees. He set a 6" x 6" x 36" concrete monument with brass cap and made one new bearing tree: 28" Birch, S53, 16 links.
- 11/29/1989: Milo E. Stefan found Hall's monument lying down with Hall's bearing tree (Birch) cut down. He reset Hall's monument and made four new bearing trees and set a plastic sign post next to monument. (In digging hole he recovered post point 5" long).
- 11/14/2014: I found and accepted a 6" x 6" concrete monument with a brass cap. I found all four bearing trees, but only one with a nail in the side. I set new nails in 3 of the existing bearing trees to witness the corner.

(c)(d)(e) Plan view of corner with ties to at least four witnesses. If in disagreement with previously established corner, show the distances between the two corners and also indicate the tie to the disputed corner.



Certification

I, Gregory S. Maines, Professional Land Surveyor No. 2729, hereby certify that the corner location on this record was referenced by me or under my direction and control and that this U.S. Public Land Survey Monument Record is complete to the best of my knowledge and belief.