

# U.S. PUBLIC LAND SURVEY MONUMENT RECORD

Note: This form is intended and designed to fulfill all requirements of Wisconsin Administrative Code, Chapter A-E 7.08 U.S. Public Land Survey Monument Record (3) (a)(b)(c)(d)(e)(f)(g)(h)(i). An additional sheet may be added if necessary to confirm with said requirements.

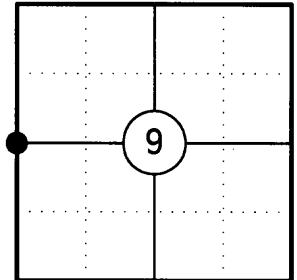
**(a) Corner Location:**

West 1/4 Corner Section 9  
 Township 35 North  
 Range 9 East  
 Town of Enterprise  
 County of Oneida

Oneida County ID No.: 3509082000

**Oneida County Coordinates (NAD 83/2011):**

N= 126746.32  
 E= 270869.20



**(b) History of Original Corner:**

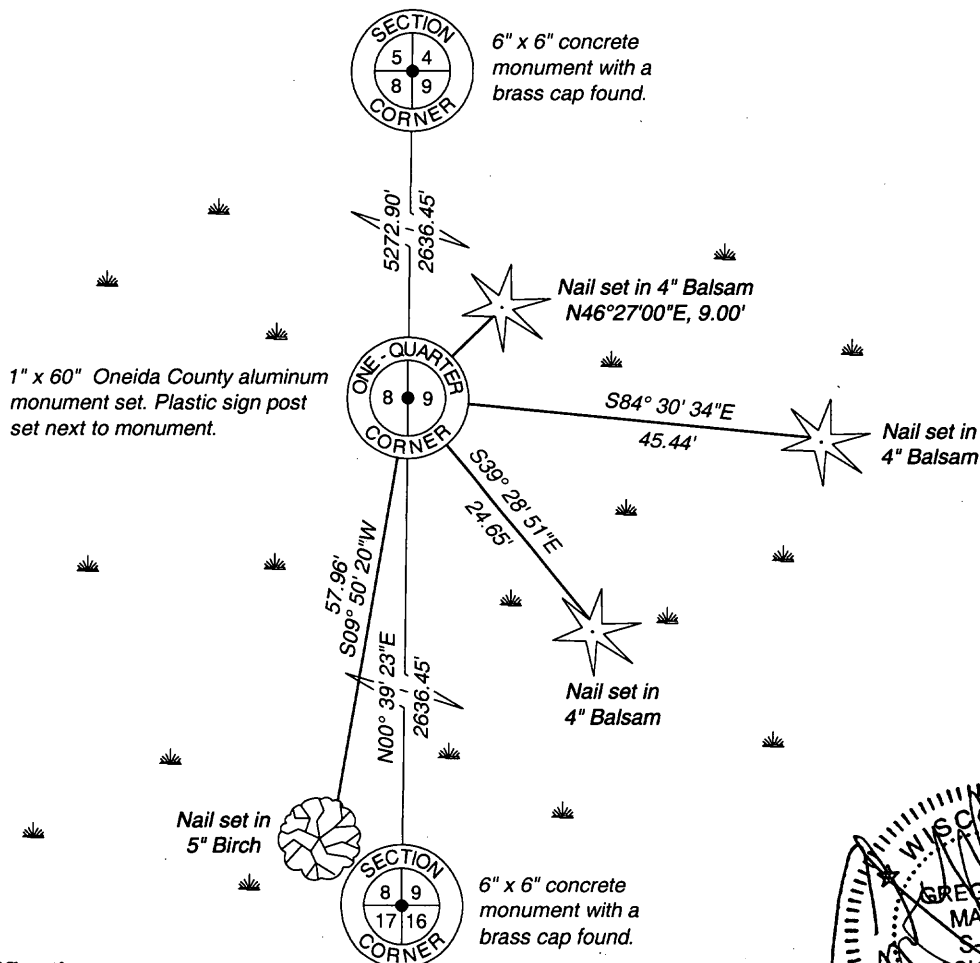
Original Surveyor: James L. Nowlin  
 Date of Survey: October/November 1864

Original Bearing Trees: 10" Spruce - S82°E, 10 Links  
 12" Spruce - N82°W, 9 Links

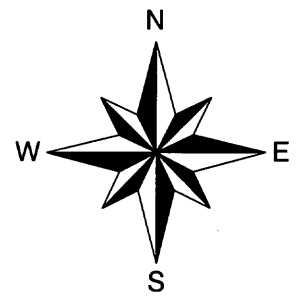
**(f)(g)(h) Description of monument found at this corner and if it was accepted, state all evidence (material, testimonial, occupational, plats, records, other monuments) used as a basis for establishing location. If reestablishing through lost corner proportionate methods, indicate all monuments, distances, and directions used to establish. Indicate type of monument and sign post found or set.**

- 1864: James L. Nowlin set the original 1/4 Corner post
- 01/24/1899: B.F. Dorr (Dorr/Vaughan notes page 1) shows a section subdivision of Section 9, but after discussing the notes with Mike Romportl, County Surveyor it appears that these notes were copied in error. These same notes appear for Section 9, Town 35 North, Range 10 East.
- 11/14/2014: I Found no evidence of the original corner. I positioned the corner by single proportion using the northwest and southwest corners of Section 9. I set a 1" X 60" Oneida County aluminum monument stamped to identify the corner and made four bearing trees to witness the corner.

**(c)(d)(e) Plan view of corner with ties to at least four witnesses. If in disagreement with previously established corner, show the distances between the two corners and also indicate the tie to the disputed corner.**



Oneida County Grid Bearings

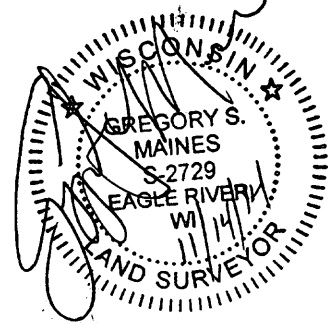


Sketch is not to scale  
 Distances to nail in side of tree.

REGISTER OF DEEDS OFFICE  
 ONEIDA COUNTY  
 FILED

JAN 07 2015

AT O'CLOCK  
 KYLE J. FRANSON  
 REGISTER OF DEEDS



**Certification**

I, Gregory S. Maines, Professional Land Surveyor No. 2729, hereby certify that the corner location on this record was referenced by me or under my direction and control and that this U.S. Public Land Survey Monument Record is complete to the best of my knowledge and belief.

3509082000