

U.S. PUBLIC LAND SURVEY MONUMENT RECORD

Note: This form is intended and designed to fulfill all requirements of Wisconsin Administrative Code, Chapter A-E 7.08 U.S. Public Land Survey Monument Record (3) (a)(b)(c)(d)(e)(f)(g)(h)(i). An additional sheet may be added if necessary to confirm with said requirements.

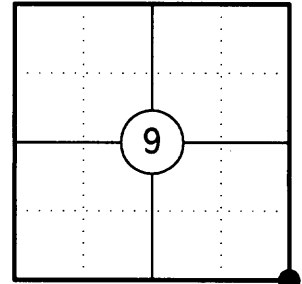
(a) Corner Location:

Southeast Corner Section 9
Township 35 North
Range 9 East
Town of Enterprise
County of Oneida

Oneida County ID No.: 3509090000

Oneida County Coordinates (NAD 83/2011):

N= 124221.62
E= 276051.92



(b) History of Original Corner:

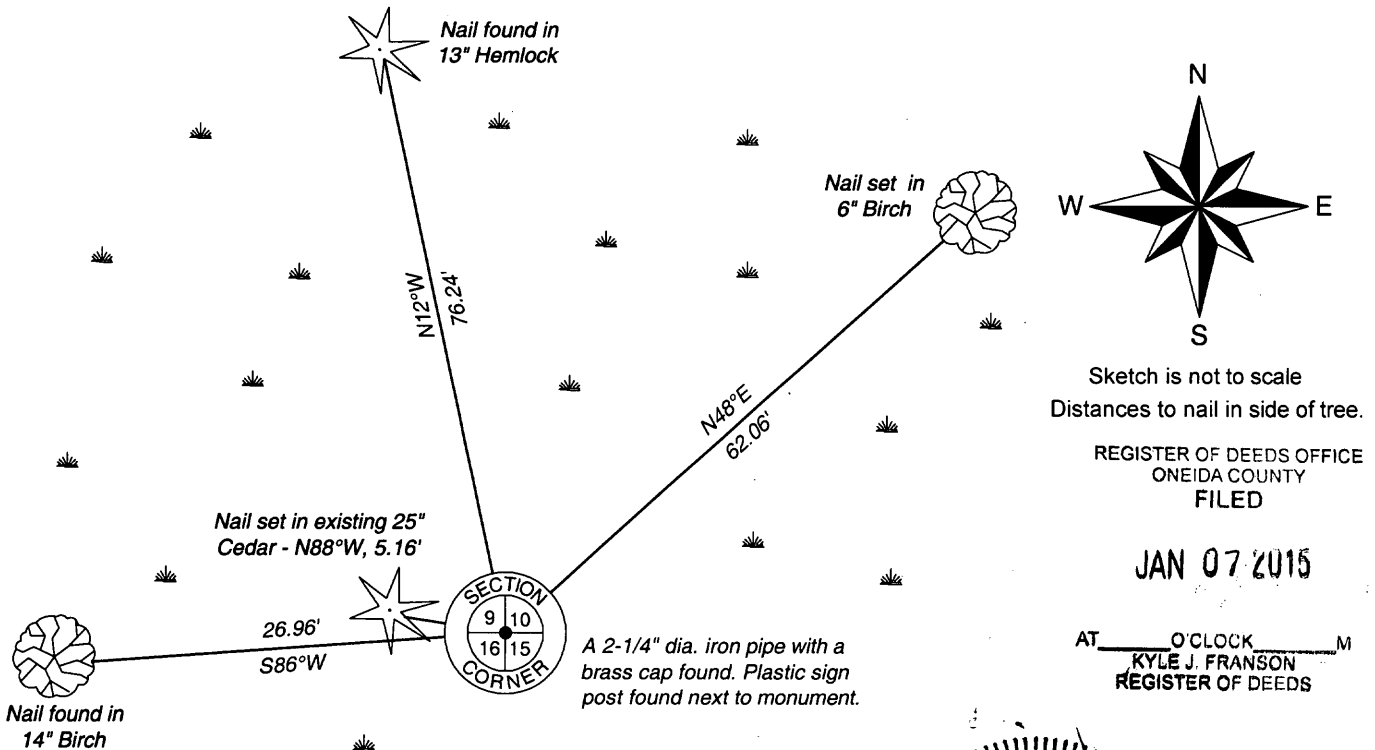
Original Surveyor: James L. Nowlin
Date of Survey: October/November 1864

Original Bearing Trees:
7" Spruce - N47°E, 25 Links
8" Tamarack - S51°W, 6 Links
6" Tamarack - No Bearing or distance
5" Tamarack - No Bearing or distance

(f)(g)(h) Description of monument found at this corner and if it was accepted, state all evidence (material, testimonial, occupational, plats, records, other monuments) used as a basis for establishing location. If reestablishing through lost corner proportionate methods, indicate all monuments, distances, and directions used to establish. Indicate type of monument and sign post found or set.

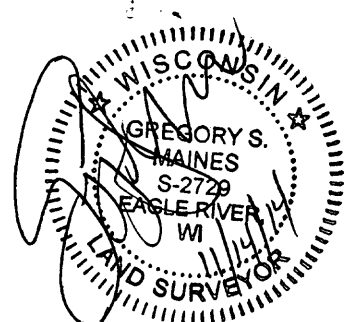
- 1864: James L. Nowlin set the original Section Corner post
- No date: B.F. Dorr (Dorr/Vaughan notes page 2) shows he ran north from this corner.
- 09/05/1936: Maine found remains of original bearing tree and set a 2-1/4" x 60" iron pipe with brass cap and made three new bearing trees: 7" Spruce, N47°W, 25 links; 3" Black Ash, N27°E, 10 links; 8" Cedar (forked about 6' high), S88°W, 8 links.
- 11/20/1989: Lester Schmit found a 2" brass capped iron pipe. (See O.C.S. Map Number B3382).
- 11/29/1989: Milo E. Stefan found Maine's monument and cedar in good condition - Spruce and Ash bearing trees are nearly gone. He made three new bearing trees and set a plastic sign post.
- 11/14/2014: I found and accepted a 2-1/4" dia. iron pipe with a brass cap along with three bearing trees. I made one additional bearing tree to witness the corner.

(c)(d)(e) Plan view of corner with ties to at least four witnesses. If in disagreement with previously established corner, show the distances between the two corners and also indicate the tie to the disputed corner.



Certification

I, Gregory S. Maines, Professional Land Surveyor No. 2729, hereby certify that the corner location on this record was referenced by me or under my direction and control and that this U.S. Public Land Survey Monument Record is complete to the best of my knowledge and belief.



3509090000