

# U.S. PUBLIC LAND SURVEY MONUMENT RECORD

Note: This form is intended and designed to fulfill all requirements of Wisconsin Administrative Code, Chapter A-E 7.08 U.S. Public Land Survey Monument Record (3) (a)(b)(c)(d)(e)(f)(g)(h)(i). An additional sheet may be added if necessary to confirm with said requirements.

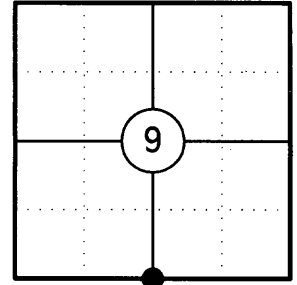
**(a) Corner Location:**

South 1/4 Corner Section 9  
 Township 35 North  
 Range 9 East  
 Town of Enterprise  
 County of Oneida

**Oneida County ID No.:** 3509090020

**Oneida County Coordinates (NAD 83/2011):**

N= 124129.77  
 E= 273434.70



**(b) History of Original Corner:**

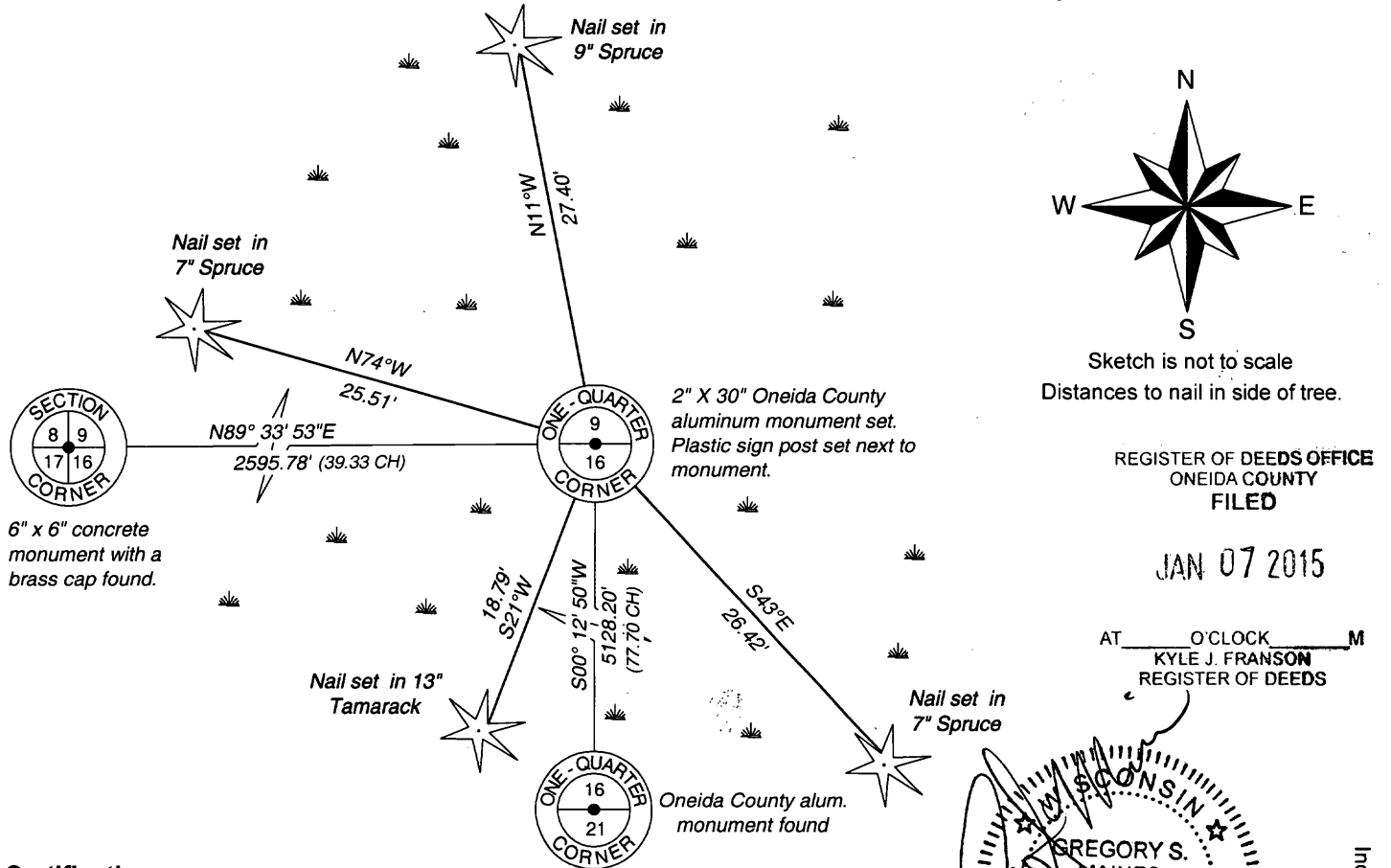
Original Surveyor: James L. Nowlin  
 Date of Survey: October/November 1864

Original Bearing Trees: 8" Tamarack - N20°W, 20 Links  
 8" Tamarack - S05°E, 3 Links

**(f)(g)(h) Description of monument found at this corner and if it was accepted, state all evidence (material, testimonial, occupational, plats, records, other monuments) used as a basis for establishing location. If reestablishing through lost corner proportionate methods, indicate all monuments, distances, and directions used to establish. Indicate type of monument and sign post found or set.**

- 1864: James L. Nowlin set the original 1/4 Corner post
- 12/14/1886: B.F. Dorr (Dorr/Vaughan notes page 3) subdivided Section 16 to the south.
- 01/24/1899: B.F. Dorr (Dorr/Vaughan notes page 1) shows a section subdivision of Section 9, but after discussing the notes with Mike Romportl, County Surveyor it appears that these notes were copied in error. These same notes appear for Section 9, Town 35 North, Range 10 East.
- 11/14/2014: I Found no evidence of the original corner. I positioned the corner by distance/distance intersection using the measurements given in B.F. Dorr's 1886 notes. I held a distance of 2595.78' (39.33 chains) from the southwest corner of Section 9 and a distance of 5128.20' (77.70 chains) from the South 1/4 corner of Section 16. I set a 2" X 30" Oneida County aluminum monument stamped to identify the corner and made four bearing trees to witness the corner.

**(c)(d)(e) Plan view of corner with ties to at least four witnesses. If in disagreement with previously established corner, show the distances between the two corners and also indicate the tie to the disputed corner.**



REGISTER OF DEEDS OFFICE  
 ONEIDA COUNTY  
 FILED

JAN 07 2015

AT \_\_\_\_\_ O'CLOCK \_\_\_\_\_ M  
 KYLE J. FRANSON  
 REGISTER OF DEEDS

WISCONSIN  
 GREGORY S. MAINES  
 S-2729  
 EAGLE RIVER, WI  
 LAND SURVEYOR

**Certification**  
 I, Gregory S. Maines, Professional Land Surveyor No. 2729, hereby certify that the corner location on this record was referenced by me or under my direction and control and that this U.S. Public Land Survey Monument Record is complete to the best of my knowledge and belief.

3509090020

Index No. J-11