

U.S. PUBLIC LAND SURVEY MONUMENT RECORD

Note: This form is intended and designed to fulfill all requirements of Wisconsin Administrative Code, Chapter A-E 7.08 U.S. Public Land Survey Monument Record (3) (a)(b)(c)(d)(e)(f)(g)(h)(i). An additional sheet may be added if necessary to confirm with said requirements.

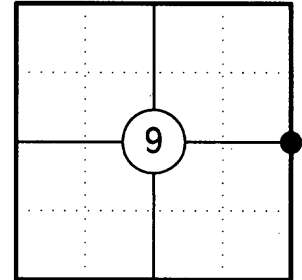
(a) Corner Location:

East 1/4 Corner Section 9
 Township 35 North
 Range 9 East
 Town of Enterprise
 County of Oneida

Oneida County ID No.: 3509092000

Oneida County Coordinates (NAD 83/2011):

N= 126757.77
 E= 276140.82



(b) History of Original Corner:

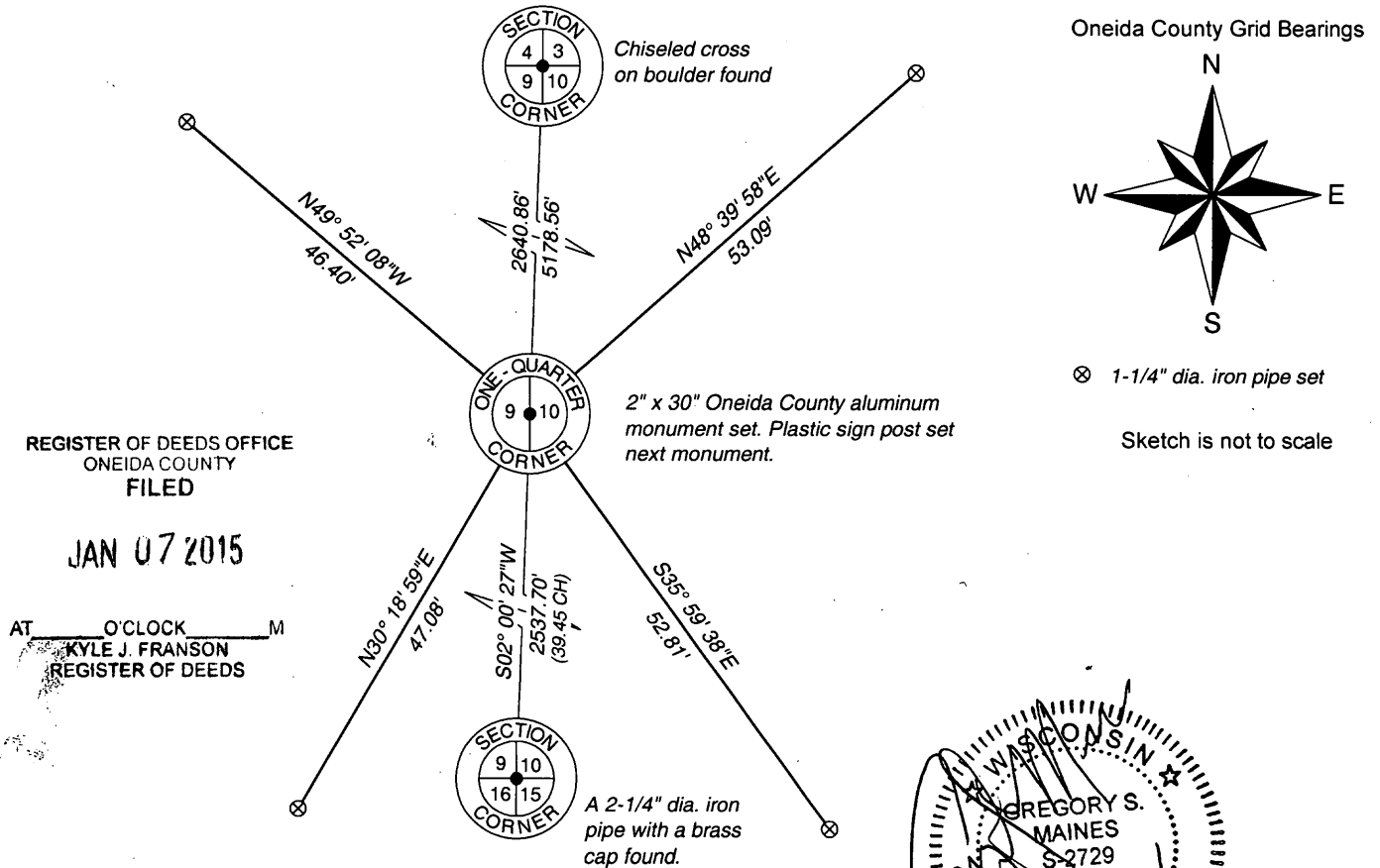
Original Surveyor: James L. Nowlin
 Date of Survey: October/November 1864

Original Bearing Trees: 7" Maple - S48°E, 12 Links
 6" Birch - S69°W, 10 Links

(f)(g)(h) Description of monument found at this corner and if it was accepted, state all evidence (material, testimonial, occupational, plats, records, other monuments) used as a basis for establishing location. If reestablishing through lost corner proportionate methods, indicate all monuments, distances, and directions used to establish. Indicate type of monument and sign post found or set.

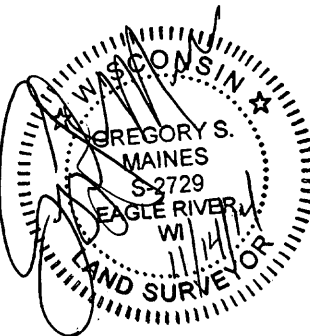
- 1864: James L. Nowlin set the original 1/4 Corner post
- 01/24/1899: B.F. Dorr (Dorr/Vaughan notes page 1) shows a section subdivision of Section 9, but after discussing the notes with Mike Romportl, County Surveyor it appears that these notes were copied in error. These same notes appear for Section 9, Town 35 North, Range 10 East.
- No date: B.F. Dorr (Dorr/Vaughan notes page 2) shows he ran north from the southeast corner of Section 9 a distance of 38.45 chains to the East 1/4 corner.
- 11/20/1989: Lester Schmit shows an approximate East 1/4 corner at B.F. Dorr's distance. (See O.C.S. Map Number B3382).
- 11/14/2014: I Found no evidence of the original corner. I positioned the corner on a line between the northeast and southeast corners of Section 9 at B.F. Dorr's distance of 2537.70' (38.45 Chains) north of the southeast corner of Section 9. I set a 2" X 30" Oneida County aluminum monument stamped to identify the corner and set four reference monuments to witness the corner.

(c)(d)(e) Plan view of corner with ties to at least four witnesses. If in disagreement with previously established corner, show the distances between the two corners and also indicate the tie to the disputed corner.



Certification

I, Gregory S. Maines, Professional Land Surveyor No. 2729, hereby certify that the corner location on this record was referenced by me or under my direction and control and that this U.S. Public Land Survey Monument Record is complete to the best of my knowledge and belief.



3509092000