

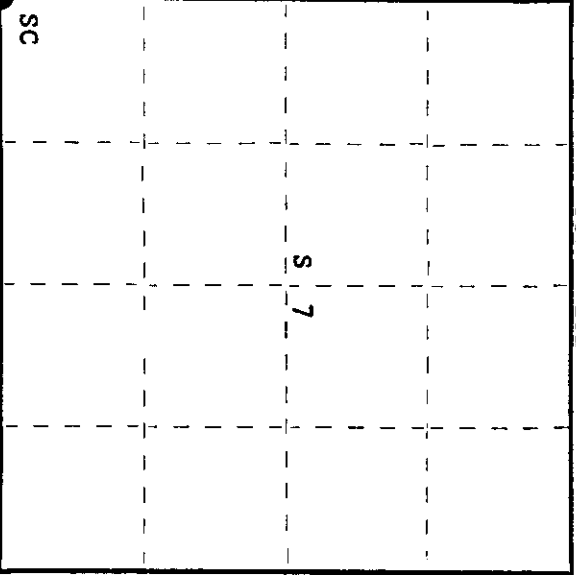
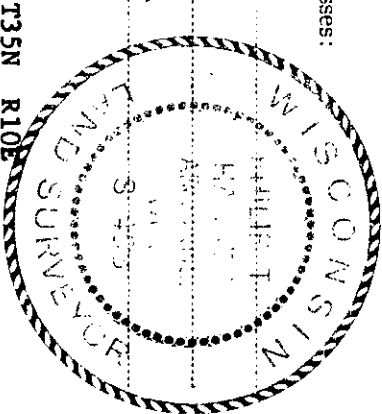
CERTIFIED LAND CORNER RESTORATION

Index No. 41

State of Wisconsin }
 County of Oneida } ss.

I, Phillip T. Hansen, do hereby certify that on the 21st day of March, 1978, I found evidence of the Section corner of S. 7, 12, 13, 18 Township 35, North, Range 9 & 10 East, Fourth Principal Meridian, as described hereon; and that from this evidence I established a new monument and accessories as described hereon to perpetuate the original location of this corner.

Resident witnesses:
Glen Barker
Jim Clafilin
Herb Wagoner



○ = Corner monument restored.

History of original corner establishment:

Original corner established by Hiram C. Fellows, Deputy Surveyor, in 1859 from which Sugar 7" bears N55°E, 10 links; Birch 30" bears S35°E, 20 links; Sugar 15" bears S80°W, 30 links; Lind 14" bears N35°W, 25 links.
 H.C. Lawrence, Registered Land Surveyor, recovered and used an iron pipe at this corner in 1946. Corner believed to have been restored by V.M. Malne.

Description of corner evidence found:

Recovered Malne's 2 1/2" iron pipe with screw in brass cap, stamped:
 Monument is in good condition and projects 24" above ground.
 Recovered original BT - Sugar 7" (26" N35°E, 10 links (N55°E) - still standing and still green.
 Malne's BT - Sugar 20" S66°E, 25 links, now a rotting stump.
 Hemlock 14" S62°W, 4 1/2 links, now a cut off stump.
 Some scribe marks visible.

Description of monument and accessories I established to perpetuate the original location of this corner.

Monument left in place as recovered.
 Marked NBT's - Sugar 7" east, 42.7 links
 Sugar 6" S46°E, 51.8 links
 Hemlock 12" S52°W, 69.2 links
 Yellow Birch 8" N14°W, 38.4 links
 all scribed SC BT.

Dated at Rhineland, Wis., this 5th day of April, 1978

Signature: Phillip T. Hansen Title: Registered Land Surveyor Registration No. S-498
 (County Surveyor, Registered Land Surveyor, or other duly authorized official)

Office of Register of Deeds, County of Oneida
 Instrument was filed in this office for record on the 17th day of April, 1978
 at 1:50 o'clock P. M.

Dennis George Kuehn
 (Register of Deeds)

By: _____ Deputy

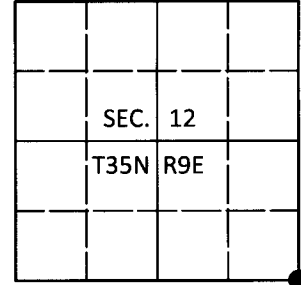
350912000

U.S. PUBLIC LAND SURVEY MONUMENT RECORD

Note: This form is intended and designed to fulfill all requirements of Wisconsin Administrative Code, Chapter A-E 7.08 U.S. Public Land Survey Monument Record (3)(a-l).

(a) CORNER LOCATION
 Cor. of Secs. 7, 12, 13 & 18
 Township 35 North
 Range 9 & 10 East of the 4th P.M.
 Town of Enterprise
 County of Oneida

WISCRS - Oneida County
 N: 124,430.18 USft
 E: 292,876.81 USft
 Datum: NAD 83(2011)
 GNSS Method: Real-Time Network
 GNSS Control: WISCORS VRS



(b) HISTORY OF ORIGINAL CORNER ESTABLISHMENT

Original Surveyor: _____ Original Accessories: _____

Date of Survey _____ Commenced: _____
 Completed: _____

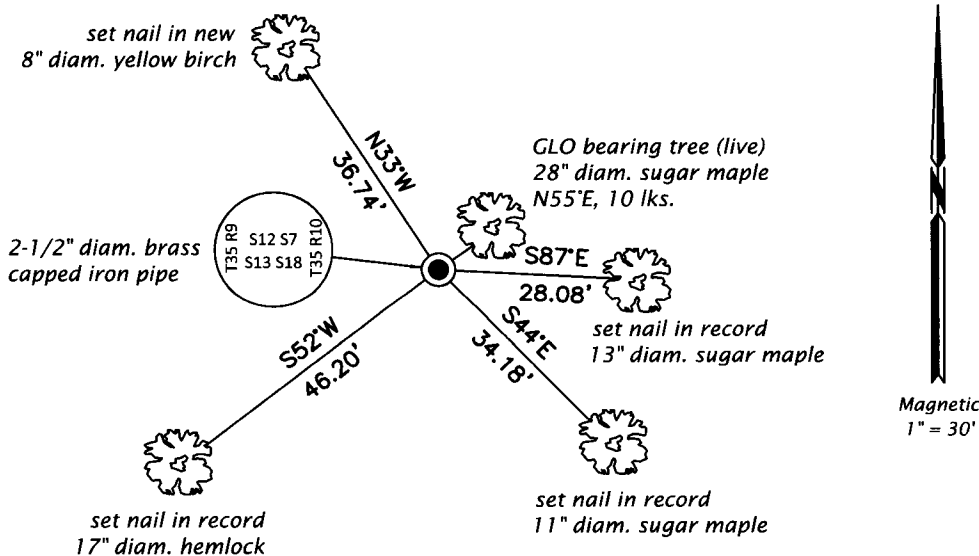
(b)(f)(g)(h) Description of monument found at this corner and if it was accepted, state all evidence (material, testimonial, occupational, plats, records, other monuments) used as a basis for accepting. If not accepted or if nothing was found, state evidence used as basis for establishing location. If re-established through lost corner proportionate methods, indicate all monuments, distances and directions used to establish. Indicate type of monument and sign post found or set.

This is a perpetuation of a previous USPLS Monument Record by Philip T. Hansen, RLS dated April 5, 1978 and filed in the office of the Oneida County Register of Deeds. A complete history of the corner can be found on the previous monument record. I accept the previous location as a true and faithful perpetuation or reestablishment of the original corner location and further perpetuate it as follows.

February 20, 2017: Based on a field survey by Jeff Austin, Hansen's monument, a 2-1/2" diam. iron pipe with a brass cap projecting 24" above a collar of stone was recovered in good condition. The GLO bearing tree described by Hansen, a 28" diam. sugar maple (N55°E, 10 lks.) is still alive although in decline. Hansen's yellow birch bearing tree is gone. Accessories were found or established as shown below. A white vinyl sign post was found Northwest, 1 ft.

The coordinate value shown has been verified by at least one of the following methods: 1) comparison to a previously GPS determined published value; 2) the value is the average of two or more GPS observations at a markedly different time; 3) one or more distances were measured back to the GPS observed corner from temporary GPS observed offset locations.

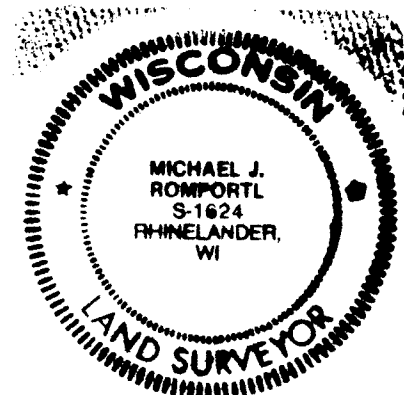
(c)(d)(e) Plan view of corner with ties to at least 4 witness monuments. If in disagreement with previously established corner, show the distances between the two corners and also indicate the ties to the disputed.



REGISTER OF DEEDS OFFICE
 ONEIDA COUNTY
 FILED

JUL 11 2017

AT _____ O'CLOCK _____ M
 KYLE J. FRANSON
 REGISTER OF DEEDS



(i) I, Michael J. Romportl, Professional Land Surveyor No. S-1624, hereby certify that the corner location on this record was determined by me or under my direction and control and that this U.S. Public Land Survey Monument Record is correct and complete to the best of my knowledge and belief.

Michael J. Romportl
 Signature

7/11/2017
 Date