

U S PUBLIC LAND SURVEY MONUMENT RECORD

NOTE: This form is intended and designed to fulfill all requirements of Wisconsin Administrative Code, Chapter A-E 7.08 U.S. Public Land Survey Monument Record (3) (a-i)

A-E 7.08(3)(a) Identity of corner:
 EAST CORNER SECTION 14,
 TOWNSHIP 35 NORTH,
 RANGE 09 EAST OF THE 4TH PM,
 TOWN OF ENTERPRISE,
 COUNTY OF ONEIDA

WISCORS - ONEIDA COUNTY
 N: 121,744.305 USft (XXX,XXX.XXX)
 E: 287,017.712 USft (XXX,XXX.XXX)
 Datum: NAD83 (2011)
 GNSS Method RTK
 GNSS Control WISCORS VRS



The coordinate value shown has been verified by the average of two or more GPS observations at a markedly different time. Coordinates shown in parenthesis are previously published values.

A-E 7.08(3)(b)

Original Surveyor: J.L. Nowlin

Date of Original Survey Commenced: October 5, 1864
 Completed: November 3, 1864

Original Accessories:

Cedar 12 S 11° E 48 Links
 Cedar 8 N 85° W 12 Links
 53.00 - Leave Tamarac Swamp NE+SW

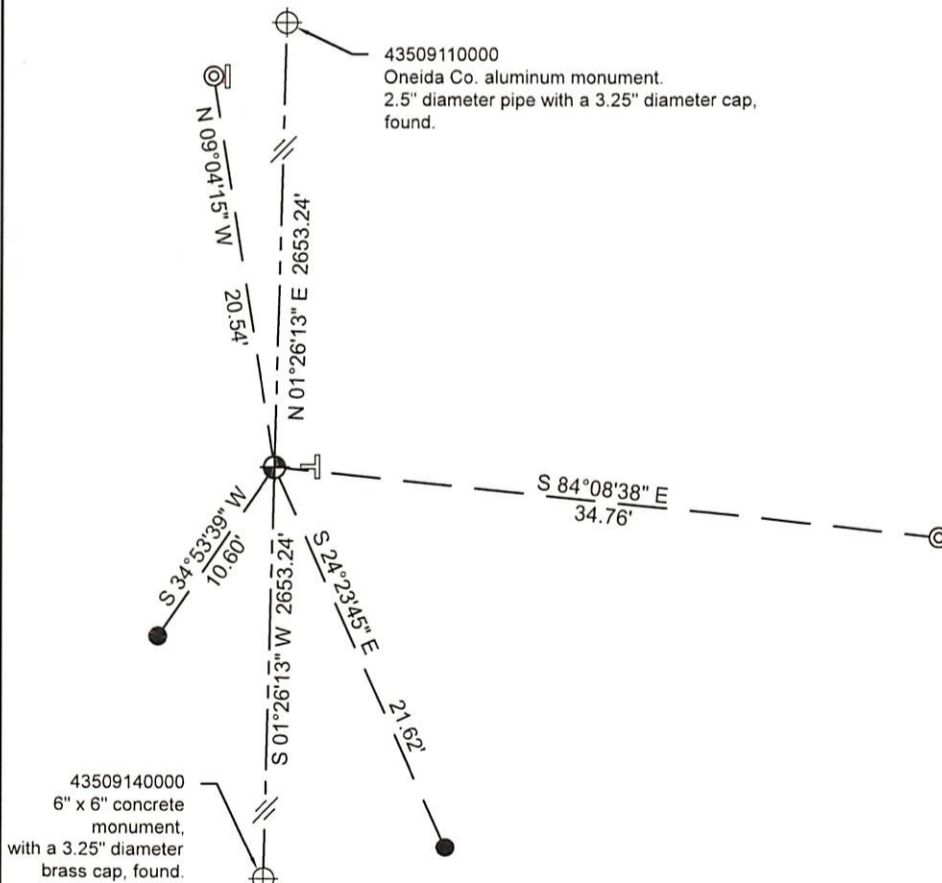
THENCE:

March 15, 2023 - I located the northeast corner and the southeast corner of Section 14, T. 35 N., R. 09 E., I also located ±710 feet of the north edge of a tamarack swamp (±320 feet east and ±390 feet west of a straight line connecting the northeast corner and the southeast corner of Section 14). I made a careful search of the area ±858 feet (13 chains) south of the swamp edge and did not find any evidence of the original corner. I did find a "newer" steel fence post near a straight line connecting the northeast corner and the southeast corner of Section 14, and within ±20 feet equal distant from either corner.

March 21, 2023 - I met with the owner of private property to the northeast, Richard Tessmann. This corner is the southwest corner of his property. Mr. Tessmann said that he has never seen evidence of the corner, and that he believes the "newer" steel fence post was set by county foresters. After another thorough search of the area ±858 feet (13 chains) south of the swamp edge, and the area surrounding a single proportion measurement position, I did not find any evidence of the original corner and re-established the corner position by single proportionate measurement, on a straight line and equal distance from the northeast corner and the southeast corner of Section 14.

I set an Oneida County aluminum monument, being a 2.5" diameter pipe, with a 3.25" diameter cap, with a cross at its center and stamped "Oneida County Survey Marker". I established 4 new reference monuments as shown below.

A-E 7.08(3)(c)(d) Plan view of corner with references to at least 4 witness monuments.



BEARINGS LISTED TO THE NEAREST
 SECOND ARE REFERENCED TO WISCONSIN
 COUNTY COORDINATE REFERENCE
 SYSTEM - ONEIDA COUNTY ZONE.
 ALL OTHER BEARINGS ARE MAGNETIC.

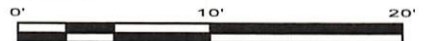
REGISTER OF DEEDS OFFICE
 ONEIDA COUNTY
 FILED

APR 10 2023

KYLE J. FRANSON
 REGISTER OF DEEDS

LEGEND

- ⊕ Oneida County aluminum monument, set.
- ⊕ Existing monument, found as noted. See current U.S.P.L.S. monument record.
- ⊙ Oneida County aluminum monument, set. 1" diameter pipe X 2.5" diameter cap.
- 0.75" diameter X 18" long iron rod, set.
- ⊥ Vinyl T-post, set ±1.5 feet west of corner.
- "Newer" steel fence post, ±0.20' east of witness.



A-E 7.08(3)(e) 1864 Surveyor set a post presumably in a tamarack swamp. 2023, I set an aluminum monument on high ground.

A-E 7.08(3)(f) NA

A-E 7.08(3)(g)(h) This corner was determined through lost-corner-proportionate methods.

A-E 7.08(3)(i) I, Jeffrey L. DeMuth, Professional Land Surveyor No. S-2656, hereby certify that the corner location on this record was determined by me or under my direction and control, and that this U.S. Public Land Survey Monument Record is correct and complete to the best of my knowledge, and belief.

SIGNATURE

March 22, 2023

DATE



L-21

3509142000