

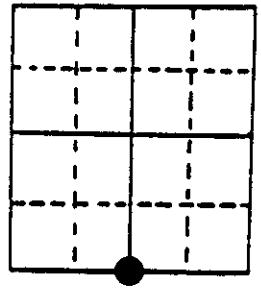
U.S. PUBLIC LAND SURVEY MONUMENT RECORD

Note: This form is intended and designed to fulfill all requirements of Wisconsin Administrative Code, Chapter A-E 7.08 U.S. Public Land Survey Monument Record (3) (a) (b) (c) (d) (e) (f) (g) (h) (i). An additional sheet may be added if necessary to conform with said requirements.

(a) Corner location: Township 35 North
 Range 9 East/West

Town/City/Village Enterprise

County Oneida



Section 16

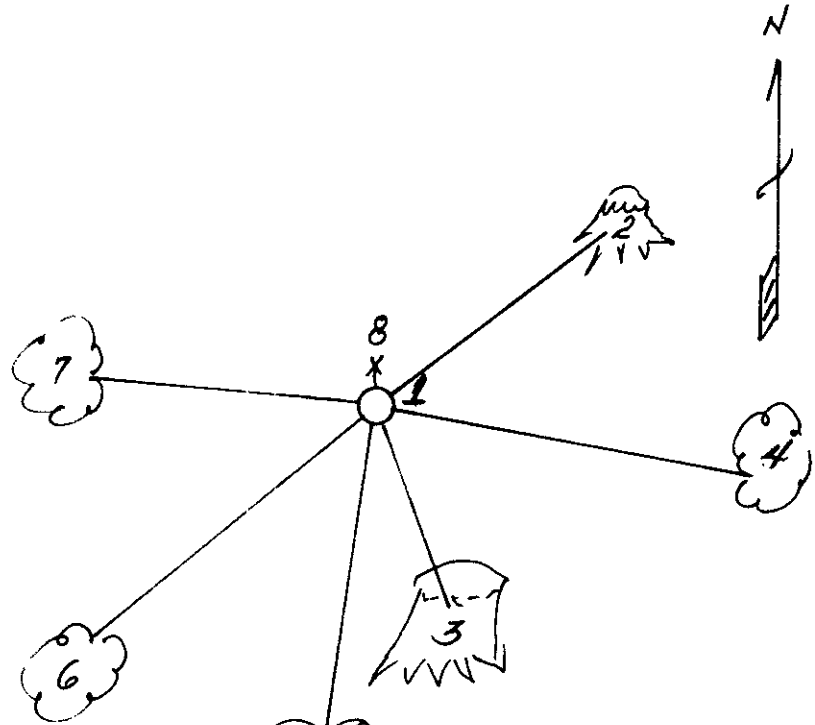
(b) (f) (g) (h) Description of monument found at this corner and if it was accepted, state all evidence (material, testimonial, occupational, plats, records, other monuments) used as a basis for accepting. If not accepted or if nothing was found, state evidence used as basis for establishing location. If reestablished through lost corner proportionate methods, indicate all monuments, distances and directions used to establish. Indicate type of monument found or set and sign post.

- 1864 - James Nowlin established this corner and set a wood post with two BTs:
 18" Sugar Maple, N25°E, 15 Links 20" Pine, S26°E, 16 Links
- 12/30/1909 - Vaughan found stumps of original BTs, set a new wood post and new BTs:
 24" W. Pine, N63°E, 22 Links 26" W. Pine, S26°E, 18 1/2 Links
 (original ?)
- 1/30/1990 - Milo E. Stefan and Rick Rowman pulled tape from Section Corner west and at 39.30 chains found two White Pine stumps that fit for Vaughan's BTs. Pulled East, to swamp, 5.0 chains and this conforms to Nowlins call in original notes.
 I, therefore, accept this evidence and restore this corner by placing a 2" x 30" aluminum monument, take new BTs and place a plastic sign post.

(c) (d) (e) Plan view of corner with ties to at least 4 witness monuments. If in disagreement with previously established corner, show the distances between the two corners and also indicate the ties to the disputed corner.

- 1) 2" x 30" Aluminum County Monument.
- 2) 24" White Pine Stump, N63°E, 14.5'
- 3) 26" White Pine Stump, S26°E, 12.25'
- 4) 8" Red Oak, S85°E, 56.10'
- 5) 5" Sugar Maple, S3°W, 40.88'
- 6) 6" Sugar Maple, S58°W, 47.02'
- 7) 6" Sugar Maple, N88°W, 31.13'
- 8) Plastic sign post next to monument

Distances to nail in side of BTs.
 BTs scribed "BT" in stump blaze.



(i) I, Milo E. Stefan
 (type or print name) certify that the corner location on this record was determined by me or under my direction and control and that this U.S. Public Land Survey Monument Record is correct and complete to the best of my knowledge and belief.

Milo E. Stefan 2/2/90
 Signature Date



Stamp

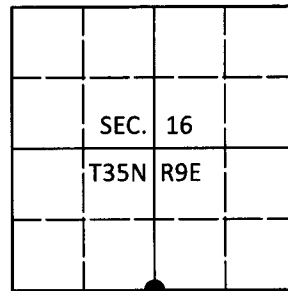
Index No. N-11

U.S. PUBLIC LAND SURVEY MONUMENT RECORD

Note: This form is intended and designed to fulfill all requirements of Wisconsin Administrative Code, Chapter A-E 7.08 U.S. Public Land Survey Monument Record (3)(a-i).

(a) CORNER LOCATION
 1/4 Cor. of Secs. 16 & 21
 Township 35 North
 Range 9 East of the 4th P.M.
 Town of Enterprise
 County of Oneida

WISCORS - Oneida County
 N: 119,001.27 USft
 E: 273,416.00 USft
 Datum: NAD 83(2011)
 GNSS Method: RTN - Direct
 GNSS Control: WISCORS VRS



(b) HISTORY OF ORIGINAL CORNER ESTABLISHMENT

Original Surveyor:

Original Accessories:

Date of Survey Commenced:
 Completed:

See previous USPLS Monument Record

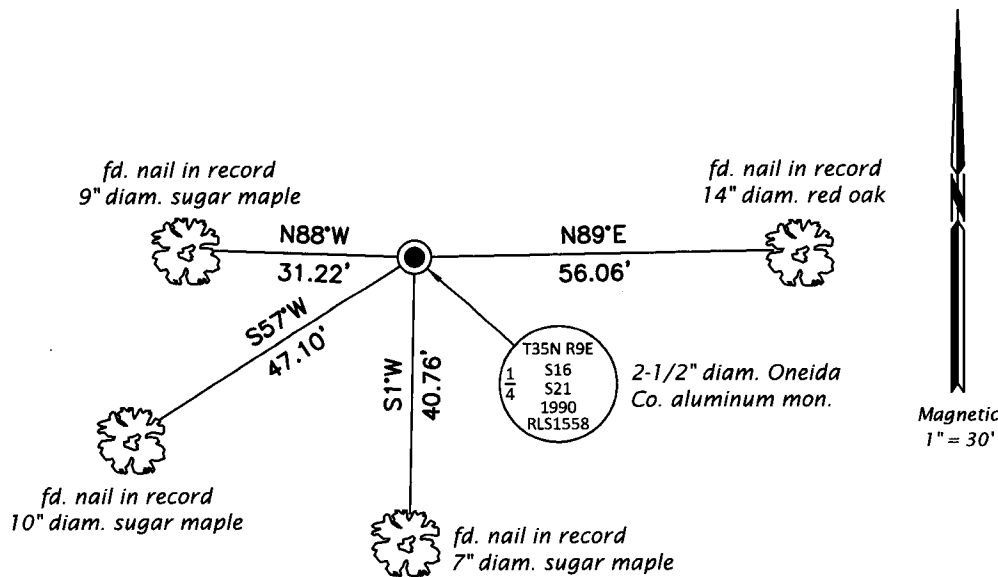
(b)(f)(g)(h) Description of monument found at this corner and if it was accepted, state all evidence (material, testimonial, occupational, plats, records, other monuments) used as a basis for accepting. If not accepted or if nothing was found, state evidence used as basis for establishing location. If re-established through lost corner proportionate methods, indicate all monuments, distances and directions used to establish. Indicate type of monument and sign post found or set.

This is a perpetuation of a previous USPLS Monument Record by Milo E. Stefan, RLS dated February 2, 1990 and filed in the office of the Oneida County Register of Deeds. A complete history of the corner can be found on the previous monument record. I accept the previous location as a true and faithful perpetuation or reestablishment of the original corner location and further perpetuate it as follows.

May 13, 2018: I found and accepted the record monument, a 2-1/2" diam. aluminum pipe with a 3-1/4" diam. Oneida Co. aluminum cap projecting 6" above a collar of stone. I found or established accessories as shown below. I found a white vinyl sign post bearing Southeast 0.6 ft.

The coordinate value shown has been verified by at least one of the following methods: 1) comparison to a previously GPS determined published value; 2) the value is the average of two or more GPS observations at a markedly different time; 3) one or more distances were measured back to the GPS observed corner from temporary GPS observed offset locations.

(c)(d)(e) Plan view of corner with ties to at least 4 witness monuments. If in disagreement with previously established corner, show the distances between the two corners and also indicate the ties to the disputed.

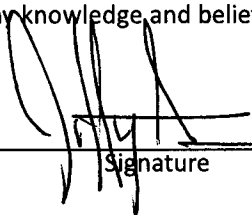


REGISTER OF DEEDS OFFICE
 ONEIDA COUNTY
 FILED

JUN 13 2018

KYLE J. FRANSON
 REGISTER OF DEEDS

(i) I, Jeffrey W. Austin, Professional Land Surveyor No. S-1885, hereby certify that the corner location on this record was determined by me or under my direction and control and that this U.S. Public Land Survey Monument Record is correct and complete to the best of my knowledge and belief.


 Signature

JUNE 4, 2018
 Date