

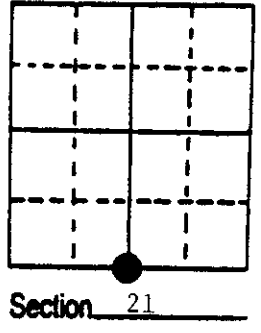
U.S. PUBLIC LAND SURVEY MONUMENT RECORD

Note: This form is intended and designed to fulfill all requirements of Wisconsin Administrative Code, Chapter A-E 7.08 U.S. Public Land Survey Monument Record (3) (a) (b) (c) (d) (e) (f) (g) (h) (i). An additional sheet may be added if necessary to conform with said requirements.

(a) Corner location: Township 35 North
 Range 9 East/West

Town/City/Village Enterprise

County Oneida

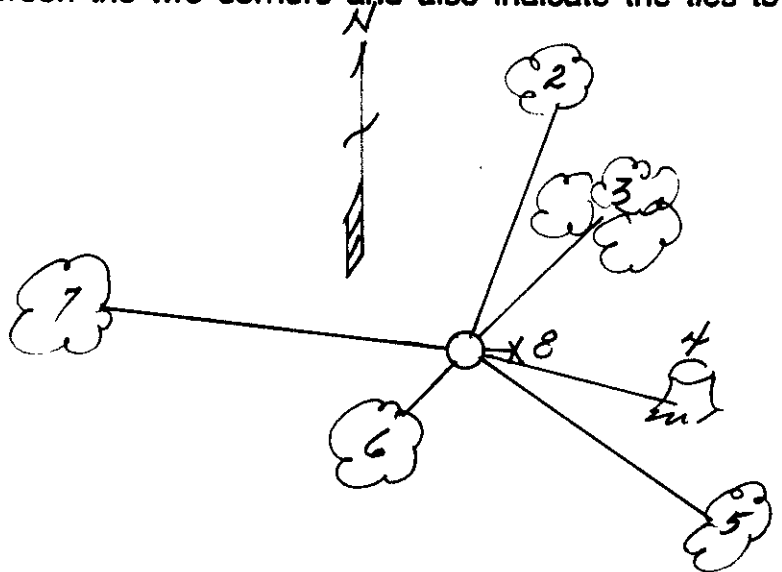


(b) (f) (g) (h) Description of monument found at this corner and if it was accepted, state all evidence (material, testimonial, occupational, plats, records, other monuments) used as a basis for accepting. If not accepted or if nothing was found, state evidence used as basis for establishing location. If reestablished through lost corner proportionate methods, indicate all monuments, distances and directions used to establish. Indicate type of monument found or set and sign post.

- 1864 - James Nowlin established this corner and set a wood post with two BTs:
 7" Hemlock, S15°W, 12 Links 10" Sugar, N37°W, 30 Links
- 1932/33 - Hall found Vaughn's BT, originals gone. He restored corner and set a Tamarack post and made three new BTs:
 4" Basswood, S55°W, 1.3 Links 7" Birch, N23°E, 16.7 Links
 4" Basswood, S70°E, 16 Links
- 11/28/1989 - Milo E. Stefan found 2 1/4" x 60" iron pipe/brass cap with two of Hall's BTs alive and southeast basswood a stump. We made three new BTs and set plastic sign post.

(c) (d) (e) Plan view of corner with ties to at least 4 witness monuments. If in disagreement with previously established corner, show the distances between the two corners and also indicate the ties to the disputed corner.

- 1) 2 1/4" x 60" Iron pipe/brass cap
- 2) 4" Sugar Maple, N13°E, 33.23'
- 3) Clump of three white birch, N23°E, 11.6' (Halls)
- 4) Basswood stump, S70°E, 10.6' (Halls)
- 5) 10" Sugar Maple, S63°E, 23.65'
- 6) 10" Basswood, S55°W, .9' (Halls)
- 7) 6" Sugar Maple, N88°W, 39.04'
- 8) Plastic sign post, east, .5'



Distances to nail in side of BTs
 Stump blazes scribed "BT"

(i) I, Milo E. Stefan
 (type or print name) certify that the corner location on this record was determined by me or under my direction and control and that this U.S. Public Land Survey Monument Record is correct and complete to the best of my knowledge and belief.

Milo E Stefan 11/30/89
 Signature Date



Index No. R-11

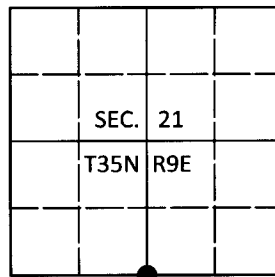
3507210020

U.S. PUBLIC LAND SURVEY MONUMENT RECORD

Note: This form is intended and designed to fulfill all requirements of Wisconsin Administrative Code, Chapter A-E 7.08 U.S. Public Land Survey Monument Record (3)(a-i).

(a) CORNER LOCATION
 1/4 Cor. of Secs. 21 & 28
 Township 35 North
 Range 9 East of the 4th P.M.
 Town of Enterprise
 County of Oneida

WISCORS - Oneida County
 N: 113,743.15 USft
 E: 273,406.59 USft
 Datum: NAD 83(2011)
 GNSS Method: Real-Time Network
 GNSS Control: WISCORS VRS



(b) HISTORY OF ORIGINAL CORNER ESTABLISHMENT

Original Surveyor: _____ Original Accessories: _____

Date of Survey _____ Commenced: _____
 Completed: _____

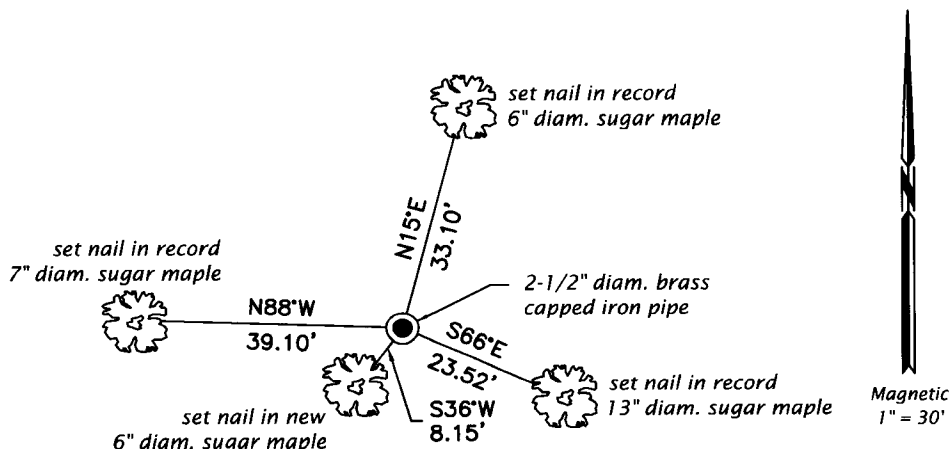
(b)(f)(g)(h) Description of monument found at this corner and if it was accepted, state all evidence (material, testimonial, occupational, plats, records, other monuments) used as a basis for accepting. If not accepted or if nothing was found, state evidence used as basis for establishing location. If re-established through lost corner proportionate methods, indicate all monuments, distances and directions used to establish. Indicate type of monument and sign post found or set.

This is a perpetuation of a previous USPLS Monument Record by Milo E. Stefan, RLS dated November 30, 1989 and filed in the office of the Oneida County Register of Deeds. A complete history of the corner can be found on the previous monument record. I accept the previous location as a true and faithful perpetuation or reestablishment of the original corner location and further perpetuate it as follows.

February 20, 2017: Based on a field survey by Jeff Austin, Stefan's monument, a 2-1/2" diam. iron pipe with a 2-1/2" diam. brass cap projecting 36" above the ground surface was recovered. Stefan's birch clump bearing tree is standing dead, his basswood is intact at record bearing and distance. Accessories were found or established as shown below. A white vinyl sign post was found Northwest, 1-1/2 ft.

The coordinate value shown has been verified by at least one of the following methods: 1) comparison to a previously GPS determined published value; 2) the value is the average of two or more GPS observations at a markedly different time; 3) one or more distances were measured back to the GPS observed corner from temporary GPS observed offset locations.

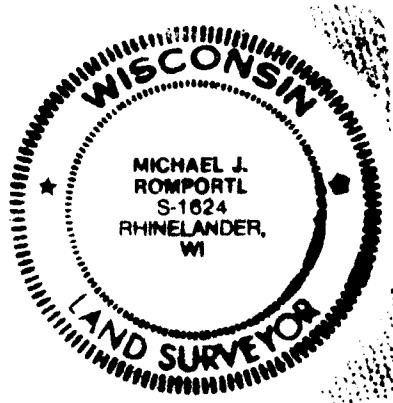
(c)(d)(e) Plan view of corner with ties to at least 4 witness monuments. If in disagreement with previously established corner, show the distances between the two corners and also indicate the ties to the disputed.



REGISTER OF DEEDS OFFICE
 ONEIDA COUNTY
 FILED

JUL 11 2017

AT _____ O'CLOCK _____ M
 KYLE J. FRANSON
 REGISTER OF DEEDS



(i) I, Michael J. Romportl, Professional Land Surveyor No. S-1624, hereby certify that the corner location on this record was determined by me or under my direction and control and that this U.S. Public Land Survey Monument Record is correct and complete to the best of my knowledge and belief.

Michael J Romportl
 Signature

7/11/2017
 Date