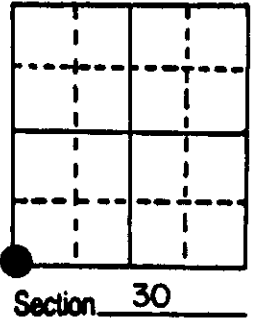
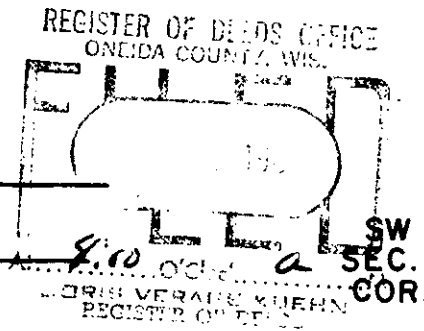


U.S. PUBLIC LAND SURVEY MONUMENT RECORD

Note: This form is intended and designed to fulfill all requirements of Wisconsin Administrative Code, Chapter A-E 5.02, U.S. Public Land Survey Monument Record (3) (a) (b) (c) (d) (e) (f) (g) (h) (i). An additional sheet may be added if necessary to conform with said requirements.

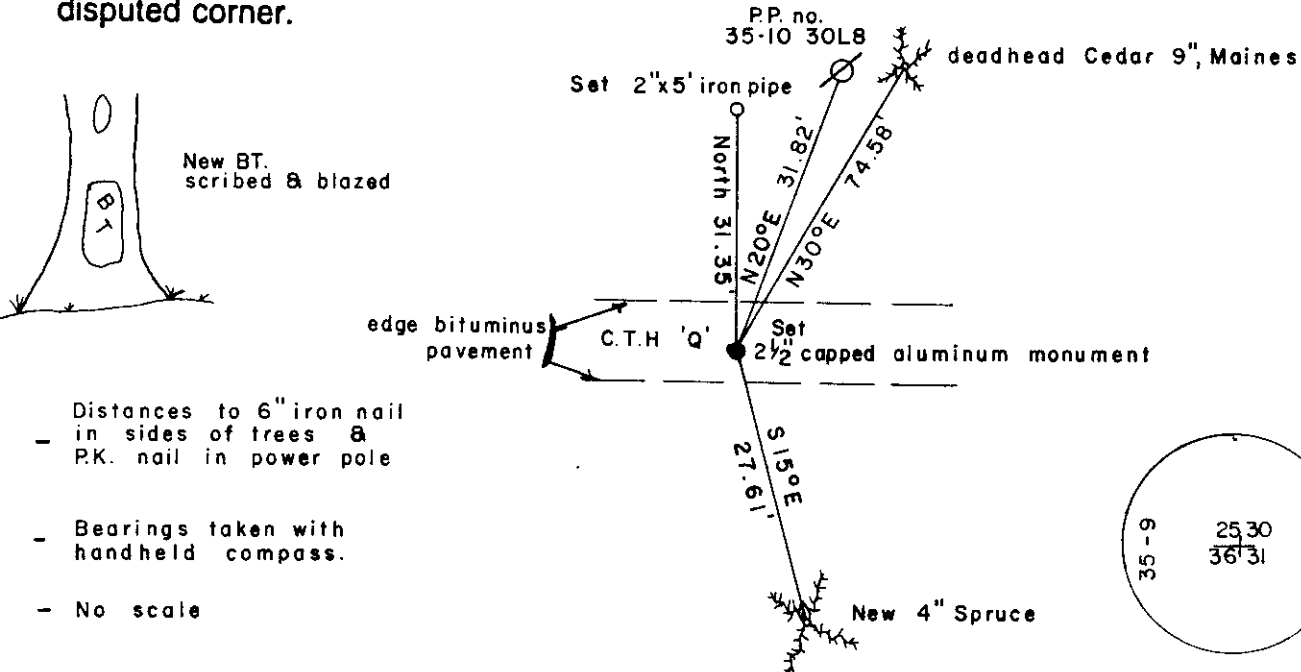
(a) Corner location: Township 35 North
 Range 10 East/West
 Town ENTERPRISE
 County ONEIDA



(b) (f) (g) (h) Description of monument found at this corner and if it was accepted, state all evidence (material, testimonial, occupational, plats, records, other monuments) used as a basis for accepting. If not accepted or if nothing was found, state evidence used as basis for establishing location. If reestablished through lost corner proportionate methods, indicate all monuments, distances and directions used to establish.

-1859 H.C. Fellows established corner to 25-30-31-36 at 80.00 ch., B.T.s Cedar 7 N 30° W 8, Birch 9 N 20° E 20, Cedar 10 S 42° E 12, Cedar 8 S 40° W 9:
 -June 1908 D. H. Vaughan went to corner 29-30-31-32 (35-10) run west 86.46 ch fell 4.26 s of corner, NW & SW cedar ok others down correct line east to corner for road.
 -1935 Maine states he identified corner by old cedar post buried in C.T.H. 'Q' set by Vaughan when original B.T.s were here, marked new B.T.s Cedar stump 10 S 47° W .66½, cedar stump 12 N 51° W .72, Cedar 8 N 30° E 1.13, offset cedar stake .47½ north (scribed) set an official iron pipe in the road
 -At the corner location I did not find the iron pipe, however I found Maines Cedar stake & the NE B.T. and reestablished the corner using his witnesses and made the new witnesses as shown below and set a capped 2½" x 30" monument in the road.

(c) (d) (e) Plan view of corner with ties to at least 4 witness monuments. If in disagreement with previously established corner, show the distances between the two corners and also indicate the ties to the disputed corner.



Distances to 6" iron nail in sides of trees & P.K. nail in power pole

Bearings taken with handheld compass.

No scale

(i) I, MICHAEL J. ROMPORTL R.L.S. 1624
 (type or print name) certify that the corner location on this record was determined by me or under my direction and control and that this U.S. Public Land Survey Monument Record is correct and complete to the best of my knowledge and belief.

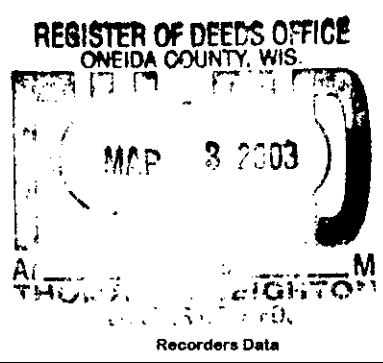
Michael J. Romportl April 28, 1986
 Signature Date

GENISOT & ASSOCIATES INC.
 1512 EAGLE ST., RHINE, WI.



Index No. V-1

3509250000



This form is intended to fulfill the requirements of Chapter A-E 7.08 (3)(a) thru (i) U.S. Public Land Survey Monument Location Record, Wisconsin Administrative Code. Use the reverse side of form for continuation.

U.S. PUBLIC LAND SURVEY MONUMENT LOCATION RECORD

USPLS CORNER: NW SECTION CORNER SECTION: 31 TOWNSHIP: 35 NORTH RANGE: 10 EAST

NAME OF WATERWAY FOR M.C. CORNER : N/A SECTION LINE: N/A

(CITY)(VILLAGE)(TOWN) OF: ENTERPRISE COUNTY OF: ONEIDA

Description of monument found or placed and all other evidence used as the basis for monument location; including monuments and related measurements required if the corner location was reestablished by lost corner proportionate methods. Also indicate name of original surveyor, original survey date and the corner monument, bearing trees, witness or other reference monuments established; including measured bearing and distance ties, from available records.

THIS CORNER WAS RE-REFERENCED WITH PRIOR VERBAL APPROVAL OF ONEIDA COUNTY SURVEYOR MICHAEL ROMPORTL AS REMAINING RECORD REFERENCES ARE INADEQUATE FOR FUTURE RECOVERY PURPOSES.

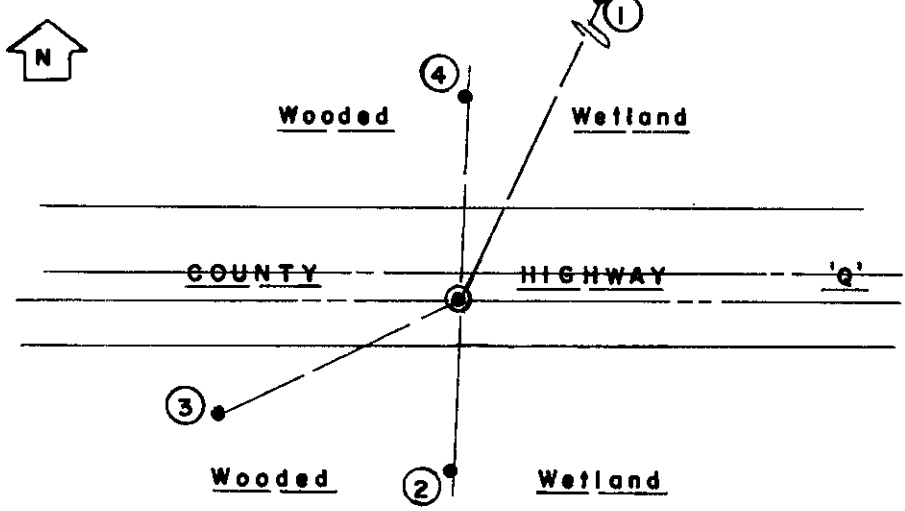
This corner was last referenced by Michael J. Romportl/RLS 1624 per U.S. Public Land Survey Monument Location Record filed October 3, 1986 in Oneida County records, which should be referred to for historical documentation.

Verified from two(2) remaining record ties, I found and accepted a railroad spike flush in existing blacktop pavement at this corner location, which falls about 4.3' South of the pavement centerline; I did not remove the spike nor excavate thru existing newer blacktop pavement for the standard Oneida capped monument reportedly set at the corner by Romportl in 1986. I painted a blaze orange cross and SC on black top at the corner.

Maines deadhead cedar BT NE as noted by Romportl is now down flat and rotted and the Spruce BT SE is now a sawed off 6" dia. stump 16" high but with lower blaze open with scribing. The 2" iron pipe record reference North of corner was found OK with a standard white poly "T" marker post along North side of the pipe and the power pole reference also found OK.

This recovery completed September 10, 2002; there were no direct witnesses other than vehicle drive-bys.

Plan view map of monument location with bearing and distance ties to a minimum of four(4) described witness or reference monuments of concrete, natural stone, iron, live bearing trees or equivalent material. If applicable, also show a minimum of two(2) bearing and distance ties to any other monument found and not accepted; including the bearing and distance from the accepted monument.



- WITNESS MONUMENT TIES:**
- ① Old unrecorded 15" Tamarack BT found with upper face blaze shut and lower face blaze open with scribing N25°E 59.23'; I painted both blazes blaze orange.
 - ② 5/8" dia. by 24" long rebar set with yellow poly RM cap 2" up S02°30'W 26.82'.
 - ③ 5/8" dia. by 24" long rebar set with yellow poly RM cap 3" up in center of a clump of small Willows on top of outer roadway ditch bank S64°W 41.65'.
 - ④ Uncapped 2" dia. iron pipe found N02°30'E 31.45'.

SCALE: 1" = 30'

Unless otherwise indicated, all bearing tree ties are to a .25" dia. by 2.5" long PK nail with a 1.25" dia. steel washer driven into unblazed right face and a .25" dia. by 2.5" long PK nail with a 2" dia. steel washer stamped BT is also driven into unblazed face of bearing tree at DBH; the basis for measured bearings is by compass to nearest degree and all tie distances are measured horizontal by steel tape corrected to nearest 1/100th feet at standard temperature of 68° F.

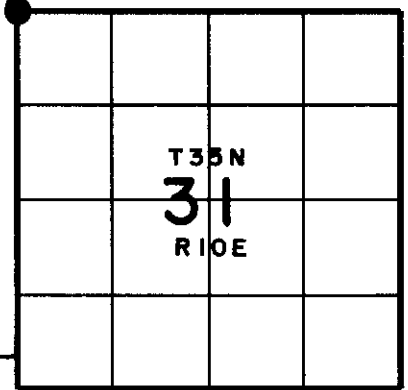
RLS SEAL:



LAND SURVEYOR CERTIFICATE:

I, William C. Rohde, hereby certify that I am duly licensed as a Professional Land Surveyor in the State of Wisconsin; that this USPLS monument location was determined by me and/or under my direct supervision and control; and that this U.S. Public Land Survey Monument Location Record is true and correct to the best of my knowledge and belief.

Signed *William C. Rohde*
William C. Rohde RLS 841



3509250000