

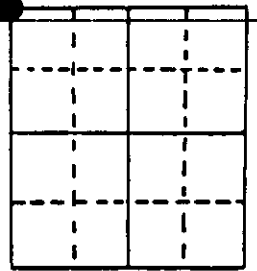
# U.S. PUBLIC LAND SURVEY MONUMENT RECORD

Note: This form is intended and designed to fulfill all requirements of Wisconsin Administrative Code, Chapter A-E 7.08 U.S. Public Land Survey Monument Record (3) (a) (b) (c) (d) (e) (f) (g) (h) (i). An additional sheet may be added if necessary to conform with said requirements.

(a) Corner location: Township 35 North  
Range 9 East/West

Town/City/Village Enterprise

County Oneida



Section 35

(b) (f) (g) (h) Description of monument found at this corner and if it was accepted, state all evidence (material, testimonial, occupational, plats, records, other monuments) used as a basis for accepting. If not accepted or if nothing was found, state evidence used as basis for establishing location. If reestablished through lost corner proportionate methods, indicate all monuments, distances and directions used to establish. Indicate type of monument found or set and sign post.

1864 - James Nowlin established this corner and set a wood post with two BTs and two witness trees:

8" Birch, N36°W, 10 Lks                      8" Birch, S84½°E, 10 Lks  
5" Birch, ?                      , ?                      6" Hemlock, ?                      , ?

8/5/1930 - Maine declared corner as lost and restored corner by double proportionate measure. He set an iron pipe with brass cap and two BTs:

14" Red Maple, S56°E, 126 Lks                      34" White Pine Stump, N5°E, 89½ Lks

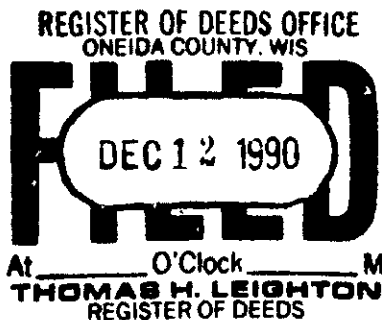
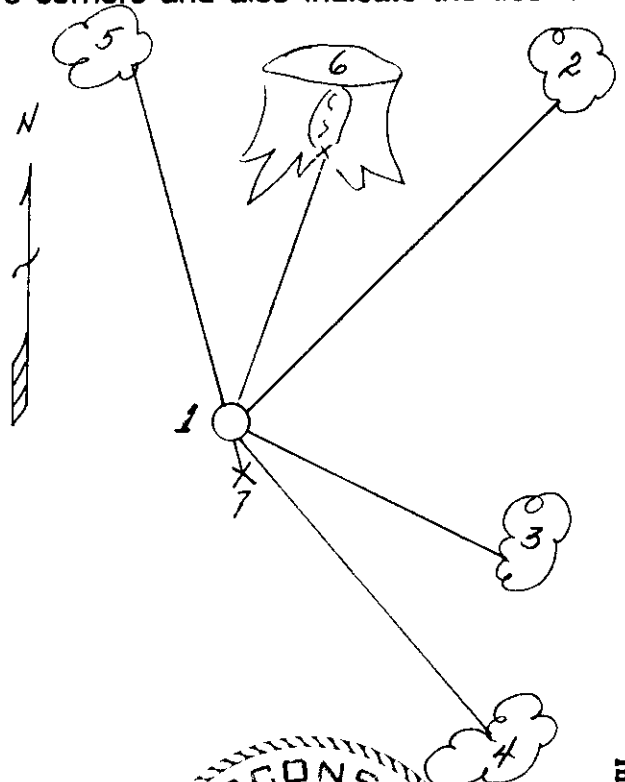
12/12/1989 - Milo E. Stefan found Maines BTs. Monument has been removed. Found remains of concrete monument in slash piles and bulldozer heaps. Could not restore corner this day because of frozen ground.

11/23/1990 - Milo E. Stefan restored corner from Maines BTs by placement of a 2" x 36" aluminum monument, made new BTs and set plastic sign post.

(c) (d) (e) Plan view of corner with ties to at least 4 witness monuments. If in disagreement with previously established corner, show the distances between the two corners and also indicate the ties to the disputed corner.

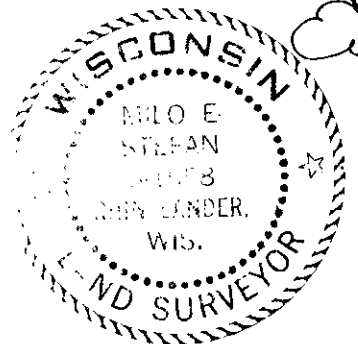
- 1) 2" x 36" aluminum county monument
- 2) 14" Red Oak, N17°E, 80.45 feet
- 3) 8" Tamarack, S75°E, 64.68 feet
- 4) 18" Red Maple, S56°E, 83.16 feet
- 5) 10" Red Oak, N6°W, 59.83 feet
- 6) 34" White Pine Stump, N5°E, 59.07 feet
- 7) Plastic sign post, SE, .3 feet

Distances to nail in side of BTs.  
Stump blaze scribed "BT".



(i) Milo E. Stefan  
(type or print name) certify that the corner location on this record was determined by me or under my direction and control and that this U.S. Public Land Survey Monument Record is correct and complete to the best of my knowledge and belief.

Milo E. Stefan                      12/5/90  
Signature                      Date



Stamp

Index No. V-17

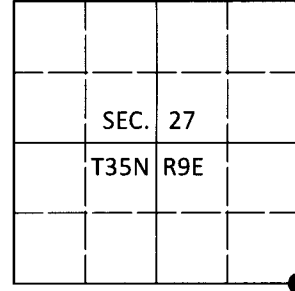
35 09 27 00000

**U.S. PUBLIC LAND SURVEY MONUMENT RECORD**

Note: This form is intended and designed to fulfill all requirements of Wisconsin Administrative Code, Chapter A-E 7.08 U.S. Public Land Survey Monument Record (3)(a-i).

(a) CORNER LOCATION  
 Cor. of Secs. 26, 27, 34 & 35  
 Township 35 North  
 Range 9 East of the 4th P.M.  
 Town of Enterprise  
 County of Oneida

WISCRS - Oneida County  
 N: 108,762.13 USft  
 E: 281,387.41 USft  
 Datum: NAD 83(2011)  
 GNSS Method: RTN - Direct  
 GNSS Control: WISCORS VRS



(b) HISTORY OF ORIGINAL CORNER ESTABLISHMENT

Original Surveyor: \_\_\_\_\_ Original Accessories: \_\_\_\_\_  
 Date of Survey Commenced: \_\_\_\_\_ See previous monument record(s)  
 Completed: \_\_\_\_\_

(b)(f)(g)(h) Description of monument found at this corner and if it was accepted, state all evidence (material, testimonial, occupational, plats, records, other monuments) used as a basis for accepting. If not accepted or if nothing was found, state evidence used as basis for establishing location. If re-established through lost corner proportionate methods, indicate all monuments, distances and directions used to establish. Indicate type of monument and sign post found or set.

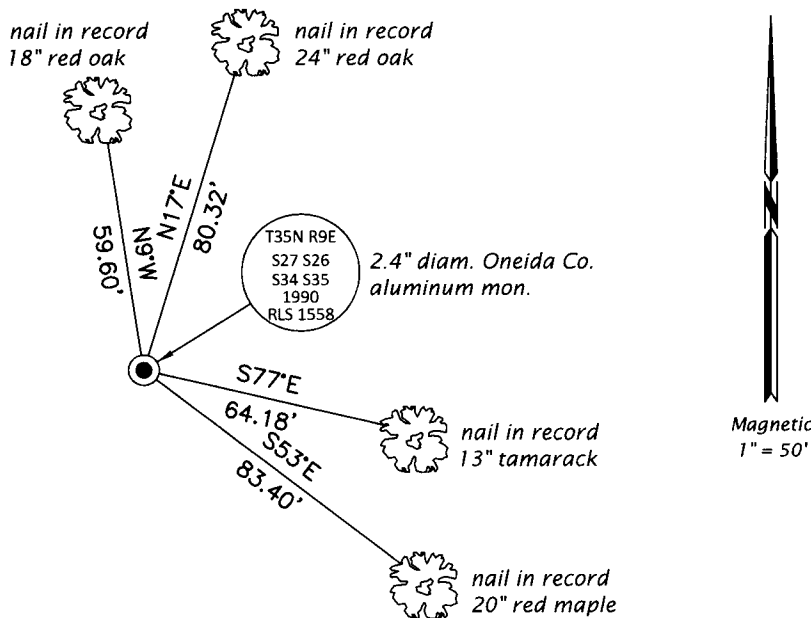
*This is a perpetuation of the following monument record(s) that comprise a complete history of the corner:*

*Dec. 5, 1990: USPLS Monument Record No. 3509270000 by Milo E. Stefan, PLS*

*July 20, 2019: I found and accepted the record monument, a 2.4" diam. aluminum pipe with a 3.3" diam. Oneida Co. aluminum cap flush in a collar of stone. I found or established accessories as shown below. I found a white vinyl sign post adjacent to the monument.*

*The coordinate value shown has been verified by at least one of the following methods: 1) comparison to a previously GPS determined published value; 2) the value is the average of two or more GPS observations at a markedly different time; 3) one or more distances were measured back to the GPS observed corner from temporary GPS observed offset locations.*

(c)(d)(e) Plan view of corner with ties to at least 4 witness monuments. If in disagreement with previously established corner, show the distances between the two corners and also indicate the ties to the disputed.

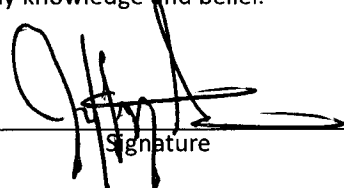


REGISTER OF DEEDS OFFICE  
 ONEIDA COUNTY  
 FILED

JAN 03 2020

KYLE J. FRANSON  
 REGISTER OF DEEDS

(i) I, Jeffrey W. Austin, Professional Land Surveyor No. S-1885, hereby certify that the corner location on this record was determined by me or under my direction and control and that this U.S. Public Land Survey Monument Record is correct and complete to the best of my knowledge and belief.

 Signature  
 DEC 23, 2019 Date