

U.S. PUBLIC LAND SURVEY MONUMENT RECORD

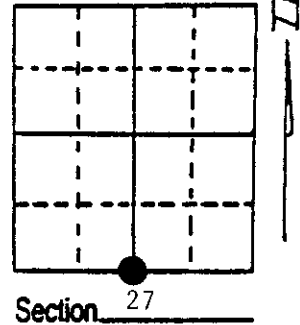
Note: This form is intended and designed to fulfill all requirements of Wisconsin Administrative Code, Chapter A-E 7.08 U.S. Public Land Survey Monument Record (3) (a) (b) (c) (d) (e) (f) (g) (h) (i). An additional sheet may be added if necessary to conform with said requirements.

(a) Corner location: Township 35 North

Range 9 East/West

Town/City/Village Enterprise

County Oneida



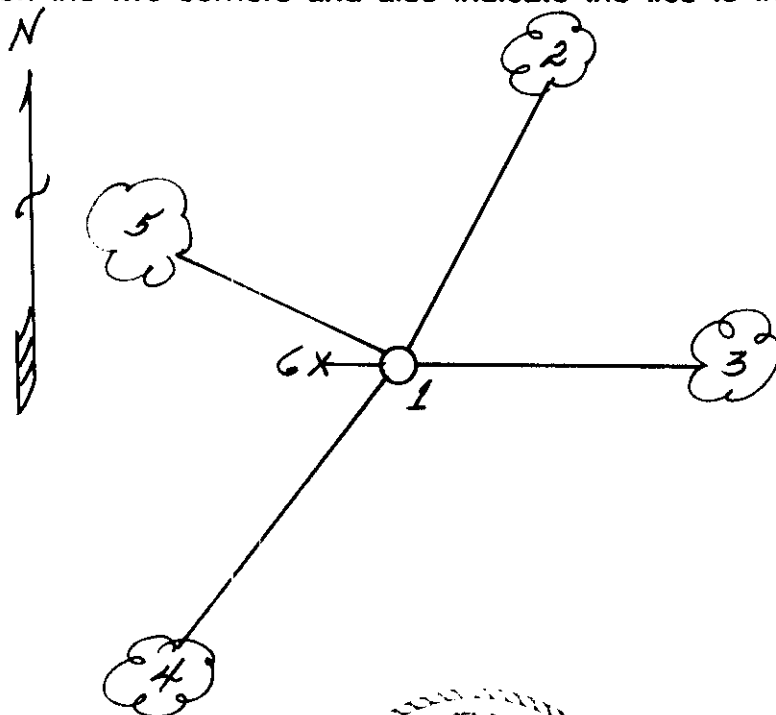
(b) (f) (g) (h) Description of monument found at this corner and if it was accepted, state all evidence (material, testimonial, occupational, plats, records, other monuments) used as a basis for accepting. If not accepted or if nothing was found, state evidence used as basis for establishing location. If reestablished through lost corner proportionate methods, indicate all monuments, distances and directions used to establish. Indicate type of monument found or set and sign post.

- 1864 - James Nowlin established this corner and set a wood post with two BTs:
5" Tamarack, S52°W, 7 Links 4" Tamarack, N4°W, 15 Links
- 7/31/1936 - Maine restored this corner by lost methods and set a 2 1/4" x 60" iron pipe/
brass cap and made three new bTs:
6" Spruce, N86°E, 13 Links 4" Spruce, N22°E, 10 Links
5" Spruce, S65°W, 43 Links
- 10/27/1969 - Resvick found Maine's monument - all three Spruce BTs - down.
- 12/13/1989 - Milo E. Stefan found Maine's monument in good condition/ 6" x 6" x 36"
scribed Cedar Post along side. BTs all gone. We made four new BTs and
set plastic sign post.

(c) (d) (e) Plan view of corner with ties to at least 4 witness monuments. If in disagreement with previously established corner, show the distances between the two corners and also indicate the ties to the disputed corner.

- 1) 2 1/4" x 60" iron pipe/brass cap
- 2) 2" Tamarack, N19°E, 21.26'
- 3) 3" Tamarack, East, 29.07'
- 4) 3" Tamarack, S38°W, 33.73'
- 5) 2" Tamarack, N77°W, 17.60'
- 6) Plastic sign post, west, 1.0'

Distances to nail in side of BTs.
Stump blazes scribed "BT".



(i) I, Milo E. Stefan

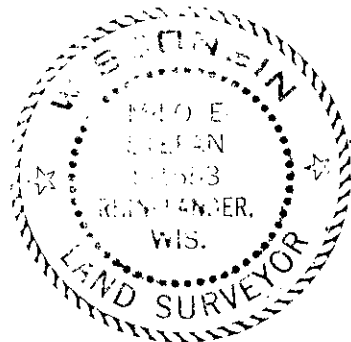
(type or print name) certify that the corner location on this record was determined by me or under my direction and control and that this U.S. Public Land Survey Monument Record is correct and complete to the best of my knowledge and belief.

Milo E. Stefan

12/16/89

Signature

Date



Stamp

Index No. V-15

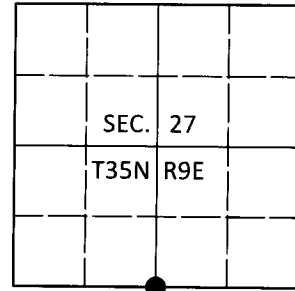
3509270020

U.S. PUBLIC LAND SURVEY MONUMENT RECORD

Note: This form is intended and designed to fulfill all requirements of Wisconsin Administrative Code, Chapter A-E 7.08 U.S. Public Land Survey Monument Record (3)(a-i).

(a) CORNER LOCATION
 1/4 Cor. of Secs. 27 & 34
 Township 35 North
 Range 9 East of the 4th P.M.
 Town of Enterprise
 County of Oneida

WISCRS - Oneida County
 N: 108,732.33 USft
 E: 278,722.78 USft
 Datum: NAD 83(2011)
 GNSS Method: RTN - Direct
 GNSS Control: WISCORS VRS



(b) HISTORY OF ORIGINAL CORNER ESTABLISHMENT

Original Surveyor:

Original Accessories:

Date of Survey Commenced:
 Completed:

See previous monument record(s)

(b)(f)(g)(h) Description of monument found at this corner and if it was accepted, state all evidence (material, testimonial, occupational, plats, records, other monuments) used as a basis for accepting. If not accepted or if nothing was found, state evidence used as basis for establishing location. If re-established through lost corner proportionate methods, indicate all monuments, distances and directions used to establish. Indicate type of monument and sign post found or set.

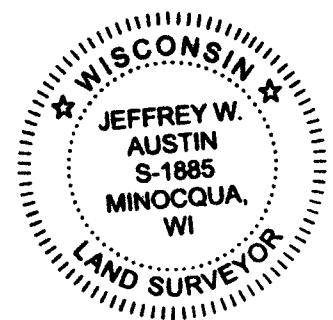
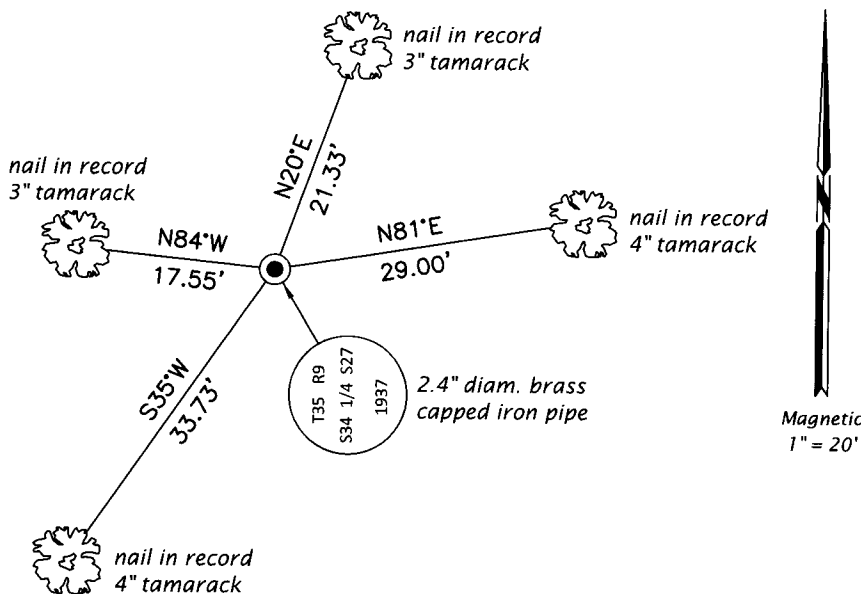
This is a perpetuation of the following monument record(s) that comprise a complete history of the corner:

Dec. 16, 1989: USPLS Monument Record No. 3509270020 by Milo E. Stefan, PLS

July 20, 2019: I found and accepted the record monument, a 2.4" diam. iron pipe with a 2.4" diam. brass cap projecting 18" above the bog surface. I found or established accessories as shown below. I did not find a sign post at the corner.

The coordinate value shown has been verified by at least one of the following methods: 1) comparison to a previously GPS determined published value; 2) the value is the average of two or more GPS observations at a markedly different time; 3) one or more distances were measured back to the GPS observed corner from temporary GPS observed offset locations.

(c)(d)(e) Plan view of corner with ties to at least 4 witness monuments. If in disagreement with previously established corner, show the distances between the two corners and also indicate the ties to the disputed.



REGISTER OF DEEDS OFFICE
 ONEIDA COUNTY
 FILED

JAN 03 2020

KYLE J. FRANSON
 REGISTER OF DEEDS

(i) I, Jeffrey W. Austin, Professional Land Surveyor No. S-1885, hereby certify that the corner location on this record was determined by me or under my direction and control and that this U.S. Public Land Survey Monument Record is correct and complete to the best of my knowledge and belief.

[Handwritten Signature]
 Signature

DEC. 23, 2019
 Date