

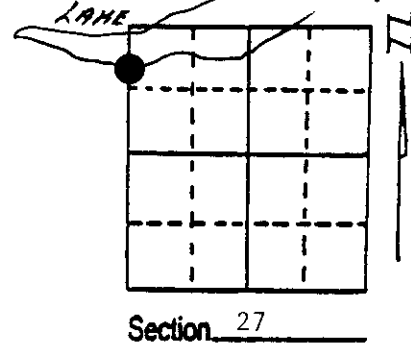
# U.S. PUBLIC LAND SURVEY MONUMENT RECORD

**Note:** This form is intended and designed to fulfill all requirements of Wisconsin Administrative Code, Chapter A-E 7.08 U.S. Public Land Survey Monument Record (3) (a) (b) (c) (d) (e) (f) (g) (h) (i). An additional sheet may be added if necessary to conform with said requirements.

(a) Corner location: Township 35 North  
 Range 9 East/West

Town/City/Village Enterprise

County Oneida



(b) (f) (g) (h) Description of monument found at this corner and if it was accepted, state all evidence (material, testimonial, occupational, plats, records, other monuments) used as a basis for accepting. If not accepted or if nothing was found, state evidence used as basis for establishing location. If reestablished through lost corner proportionate methods, indicate all monuments, distances and directions used to establish. Indicate type of monument found or set and sign post.

1864 - James Nowlin established this corner at 67.50 chains on south shore of lake.

He set a wood post and made two BTs:

7" Tamarack, S50°E, 110 Links      6" Tamarack, S60°W, 110 Links

7/24/36 - Maine found remains of both original BTs and restored corner by placement of a Tamarack stake and new BT, a 16" Pine, S13°W, 2.45 1/2 chains.

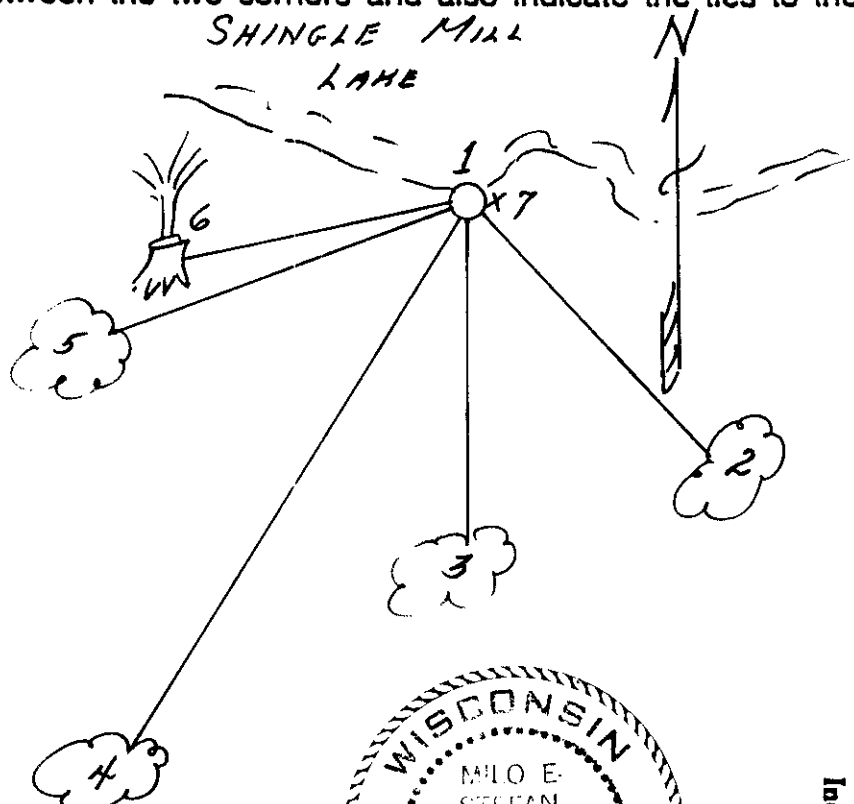
12/29/89 - Milo E. Stefan found lower 5' of Maine's post, Pine BT and stump of original SW BT.

We spiked a 2" x 30" aluminum monument to Maine's post as well as the plastic sign post and set back in same hole and made three new BTs.

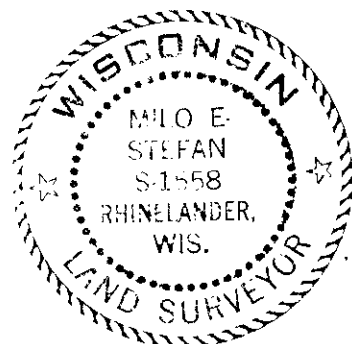
(c) (d) (e) Plan view of corner with ties to at least 4 witness monuments. If in disagreement with previously established corner, show the distances between the two corners and also indicate the ties to the disputed corner.

- 1) 2" x 30" Aluminum monument spiked to 6" x 5' Tamarack Post
- 2) 8" Tamarack, S35°E, 73.40'
- 3) 7" Tamarack, South, 25.26'
- 4) 20" White Pine, S13°W, 162.03'
- 5) 6" Tamarack, S56°W, 84.08'
- 6) 8" Tamarack Stump/6" Yellow Birch on top, S60°W, 72.6'
- 7) Plastic sign post spiked to post

Distances to nail in side of BTs.  
 Stump blazes scribed "BT".



(i) I, Milo E. Stefan  
 (type or print name) certify that the corner location on this record was determined by me or under my direction and control and that this U.S. Public Land Survey Monument Record is correct and complete to the best of my knowledge and belief.



Milo E. Stefan      1/3/90  
 Signature      Date

35 09 28 33 00

Stamp

Index No. R, S-13