

State of Wisconsin

County of Franklin } ss.

I, Raymond S. Miller, do hereby certify that on the 31st day of June, 1951, I found evidence of the Eastern corner of Sec. 31, T. 32 N., R. 32 E., Township 32, North, Range 32, Fourth Principal Meridian, as described hereon; and that from this evidence I established a new monument and accessories as described hereon to perpetuate the original location of this corner.

Resident witnesses:

CERTIFIED LAND CORNER RESTORATION

History of original corner establishment:

Copy from
Franklin Co. Reg.

Index No. A-5

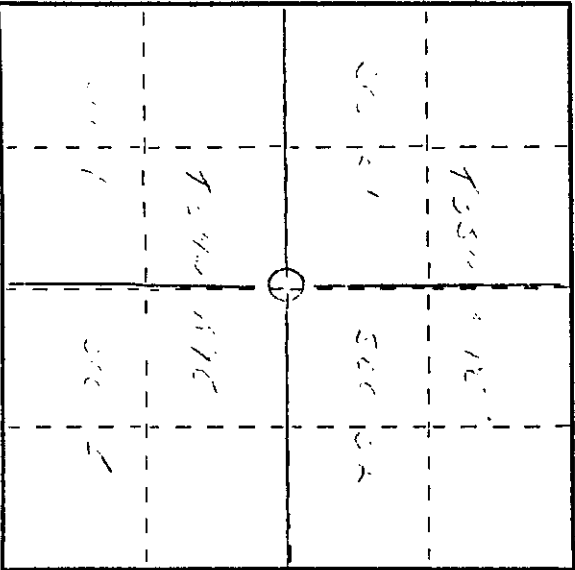
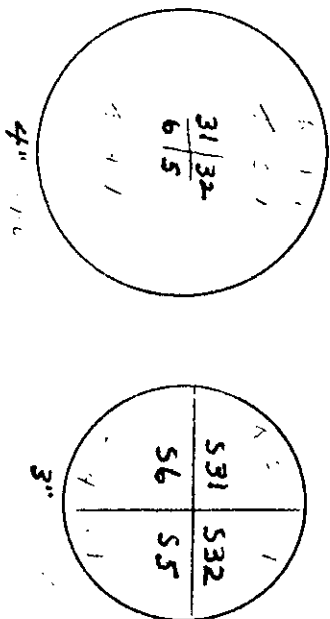
35-9

Description of corner evidence found:

4th corner of Sec. 31, T. 32 N., R. 32 E.,
4th corner of the
31st
31st

Description of monument and accessories I established to perpetuate the original location of this corner.

4th
31st
31st



O = Corner monument restored.

Dated at Franklin, Wis., this 31st day of June, 1951.

Signature Raymond S. Miller Title County Surveyor, Registered Land Surveyor, or other duly authorized official Registration No. 5564

Office of Register of Deeds, County of Franklin, I hereby certify that the within instrument was filed in this office for record on the 31st day of June, 1951 at 10 o'clock A. M.

(Register of Deeds)

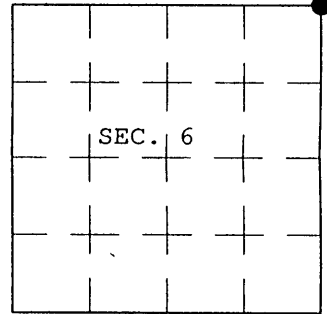
By Raymond S. Miller Deputy

3509310000

U.S. PUBLIC LAND SURVEY MONUMENT RECORD

Note: This form is intended and designed to fulfill all requirements of Wisconsin Administrative Code, Chapter A-E 7.08 U.S. Public Land Survey Monument Record (3) (a) (b) (c) (d) (e) (f) (g) (h) (i). An additional sheet may be added if necessary to conform with said requirements.

(a) CORNER LOCATION: Plane Coordinates
 Corner of Secs. 5, 6, 31 & 32 X:
 Township 34 & 35 North Y:
 Range 9 East of the 4th P.M. Datum:
 Town of Parrish County of Langlade



(b) HISTORY OF ORIGINAL CORNER ESTABLISHMENT

Original Surveyor: Hiram C. Fellows	Original Accessories:
Date of Survey: Commenced July, 1859	Sugar 7" N.81°W., 50 lks.
Completed July, 1859	Birch 8" N.53°E., 6 lks.
	Birch 7" S.14°E., 22 lks.
	Birch 10" S.8°W., 5 lks.

(b) (f) (g) (h) Description of monument found at this corner and if it was accepted, state all evidence (material, testimonial, occupational, plats, records, other monuments) used as a basis for accepting. If not accepted or if nothing was found, state evidence used as basis for establishing location. If re-established through lost corner proportionate methods, indicate all monuments, distances and directions used to establish. Indicate type of monument and sign post found or set.

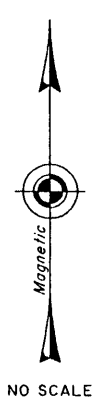
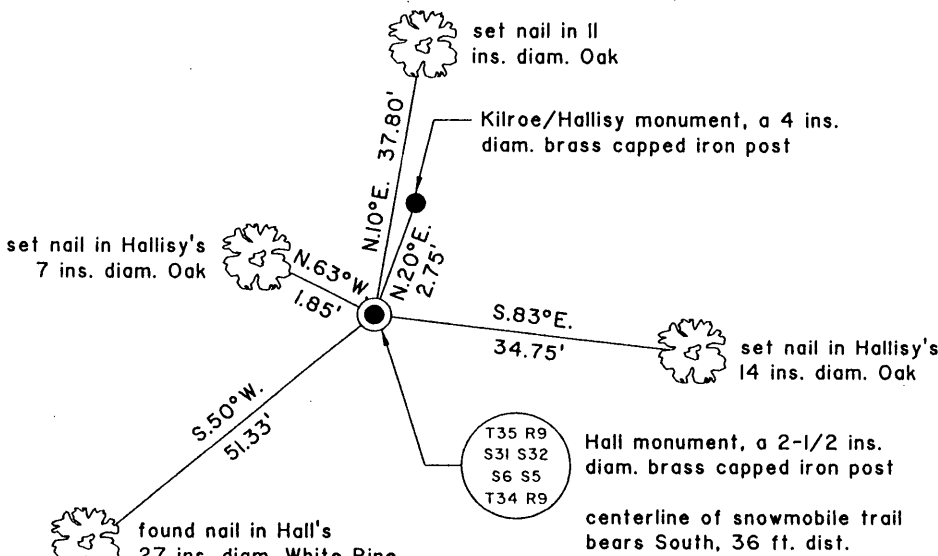
May, 1936: T.H. Kilroe determines the West three miles of the line common to Townships 34 and 35 North, Range 9 East to be lost. He re-establishes the corners on this line by running a straight line between controlling corners. "77.18 chs. set sec. cor. 5-6-31-32, Pine 12" S.46°E., 28.38; Pine 8" S.48-1/2°W., 80.3; Pine 14" N.35°E., 117.9"

December, 1937: H.C. Hall determines the West three miles of the line common to Townships 34 and 35 North, Range 9 East to be lost. He re-establishes the corners on this line by running a rhumb (curved) line between controlling corners. "set official corner common to secs. 31,32,5&6 BTs: W.Pine 15" S.56°E., .26-1/2; W.Pine 12" S.49-1/2°W., .766; W.Pine 10" S.84°W., 1.11-1/2; W.Pine 12" N.24°W., 1.60"

March 7, 1981: Raymond Hallisy prepares a U.S. Public Land Survey Monument Record and accepts the Kilroe monument with no indication that he recovered Hall's notes.

January 2, 2004: I found and accepted Hall's monument, a 2-1/2 ins. diam. iron post, projecting 26 ins. above the ground with brass cap mkd. as shown below. Hall's method is accepted practice in re-establishing lost corners of the U.S. Public Land Survey System. The corner is witnessed by Hall's W.Pine snag, 22 ins. diam., bears S.84°W., 73-1/2 ft. dist. and Hall's W.Pine snag, 27 ins. diam., bears S.50°E., 18 ft. dist. I established accessories as shown below and set a plastic sign post bearing North, 1 ft. dist.

(c) (d) (e) Plan view of corner with ties to at least 4 witness monuments. If in disagreement with previously established corner, show the distances between the two corners and also indicate the ties to the disputed.



*Copies from
Langlade County
SEE Survey Map
B-5548*

(i) I, Jeffrey W. Austin, Registered Land Surveyor No. S-1885, hereby certify upon honor that the corner location on this record was determined by me or under my direction and control and that this U.S. Public Land Survey Monument Record is correct and complete to the best of my knowledge and belief.

[Handwritten Signature]

21 FEB 2004

Signature

Date



3509310000
INDEX NO. 2-5