

CERTIFIED LAND CORNER RESTORATION

COPY FROM
Langlade Cty

Index No. 2-9
A-9
35-9

State of Wisconsin }
County of _____ } ss.

History of original corner establishment:

I, _____, do hereby certify that on the _____ 7th day of _____, 1951, I found evidence of the _____ corner of _____ Township _____ North, Range _____, Fourth Principal Meridian, as described hereon; and that from this evidence I established a new monument and accessories as described hereon to perpetuate the original location of this corner.

Corner set in the 1930 corner.

Description of corner evidence found:

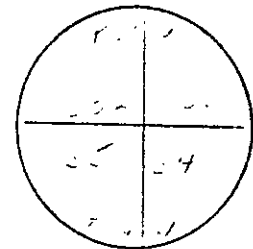
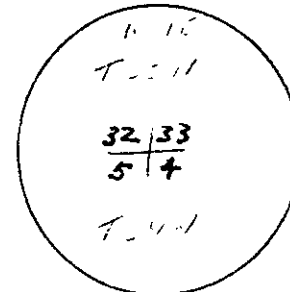
4" iron pipe with brass cap 12 1/2" 2" diameter 1/2" thick. 2" iron pipe with brass cap 12 1/2" 2 1/2" diameter.

Resident witnesses:

Description of monument and accessories I established to perpetuate the original location of this corner.

New 4" pipe to 4" line

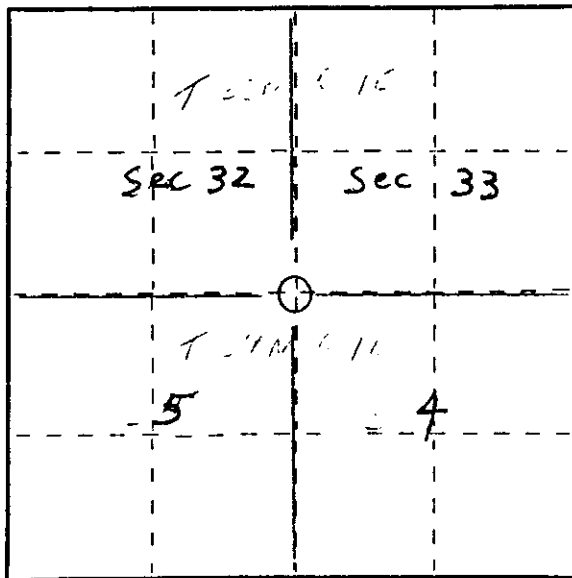
12" white Birch 8800 8150
12" aspen 8550 12110
8" hemlock 8450 8110



4" pipe

2" pipe

FORM 985 M. E. MILLER CO., MILWAUKEE



○ = Corner monument restored.

Dated at _____, Wis., this _____ 7th day of _____, 1951.

Signature Raymond J. Halley Title County Surveyor Registration No. 685
(County Surveyor, Registered Land Surveyor, or other duly authorized official)

Office of Register of Deeds, County of _____, I hereby certify that the within instrument was filed in this office for record on the _____ day of _____, 19____ at _____ o'clock _____ M.

(Register of Deeds)

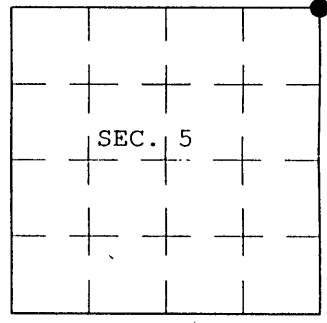
By _____ Deputy

3509320000

U.S. PUBLIC LAND SURVEY MONUMENT RECORD

Note: This form is intended and designed to fulfill all requirements of Wisconsin Administrative Code, Chapter A-E 7.08 U.S. Public Land Survey Monument Record (3) (a) (b) (c) (d) (e) (f) (g) (h) (i). An additional sheet may be added if necessary to conform with said requirements.

(a) CORNER LOCATION: Plane Coordinates
 Corner of Secs. 4, 5, 32 & 33 X:
 Township 34 & 35 North Y:
 Range 9 East of the 4th P.M. Datum:
 Town of Parrish County of Langlade



(b) HISTORY OF ORIGINAL CORNER ESTABLISHMENT

Original Surveyor: Hiram C. Fellows	Original Accessories:
Date of Survey: Commenced July, 1859	Sugar 12" N.50°W., 35 lks.
Completed July, 1859	Sugar 11" N.32°E., 15 lks.
	Aspen 16" S.62°E., 7 lks.
	Birch 12" S.59°W., 19 lks.

(b) (f) (g) (h) Description of monument found at this corner and if it was accepted, state all evidence (material, testimonial, occupational, plats, records, other monuments) used as a basis for accepting. If not accepted or if nothing was found, state evidence used as basis for establishing location. If re-established through lost corner proportionate methods, indicate all monuments, distances and directions used to establish. Indicate type of monument and sign post found or set.

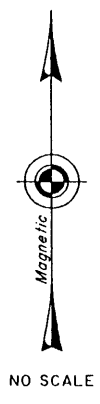
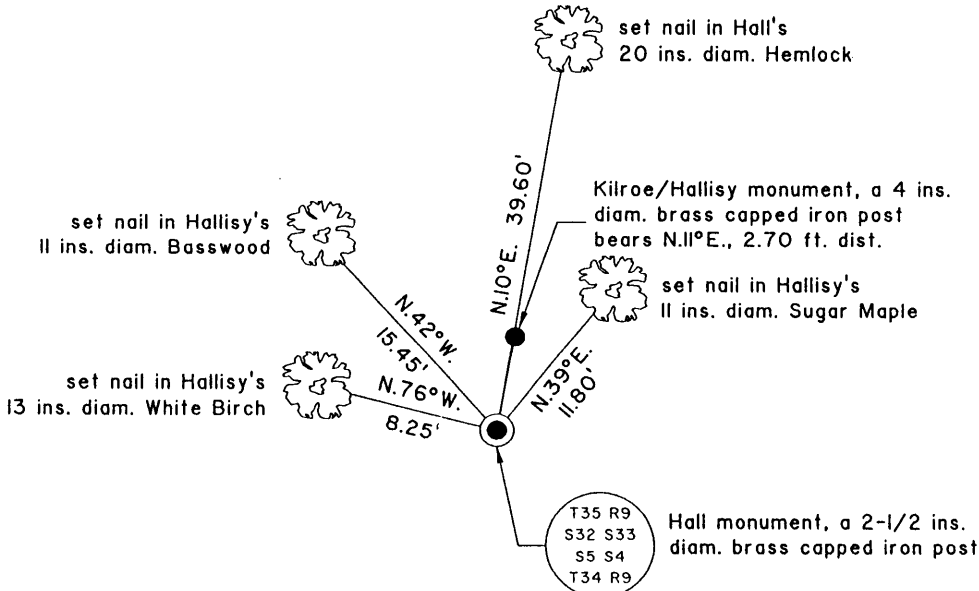
May, 1936: T.H. Kilroe determines the West three miles of the line common to Townships 34 and 35 North, Range 9 East to be lost. He re-establishes the corners on this line by running a straight line between controlling corners. "77.18 chs. set sec. cor. 4-5-32-33, Hemlock 12" N.4°E., 56.4; Maple 7" N.18°E., 41.3"

December, 1937: H.C. Hall determines the West three miles of the line common to Townships 34 and 35 North, Range 9 East to be lost. He re-establishes the corners on this line by running a rhumb (curved) line between controlling corners. "sec. cor. common to secs. 32,33,4&5 official corner BTs: Maple 20" S.88°W., 1.542; Maple 10" N.17°E., .453; Hemlock 11" N.6°E., .61"

March 7, 1981: Raymond Hallisy prepares a U.S. Public Land Survey Monument Record and accepts the Kilroe monument with no indication that he recovered Hall's notes.

January 3, 2004: I found and accepted Hall's monument, a 2-1/2 ins. diam. iron post, projecting 30 ins. above the ground with brass cap mkd. as shown below. Hall's method is accepted practice in re-establishing lost corners of the U.S. Public Land Survey System. The corner is witnessed by Hall's Maple stump, bears N.21°E., 30-1/2 ft. dist. I established accessories as shown below and set a plastic sign post bearing Southeast, 1 ft. dist.

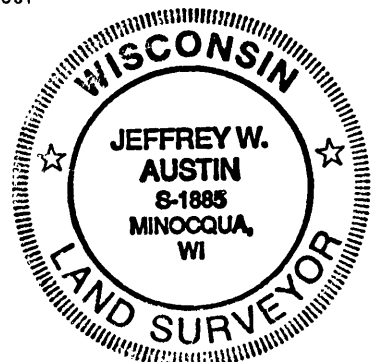
(c) (d) (e) Plan view of corner with ties to at least 4 witness monuments. If in disagreement with previously established corner, show the distances between the two corners and also indicate the ties to the disputed.



*Copies from
 Langlade County
 SEE Survey Map
 B-5548*

(i) I, Jeffrey W. Austin, Registered Land Surveyor No. S-1885, hereby certify upon honor that the corner location on this record was determined by me or under my direction and control and that this U.S. Public Land Survey Monument Record is correct and complete to the best of my knowledge and belief.

Signature:  Date: 21 FEB 2004



INDEX NO. 2-9
 3509320000