

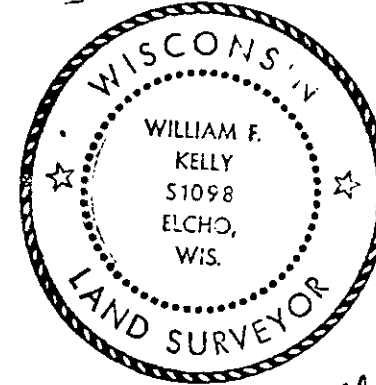
CERTIFIED LAND CORNER RESTORATION

Copy from Langlade Cty.

Index No. ~~A-13~~  
Z-13  
34.9  
35.9

State of Wisconsin }  
County of LANGLADE } ss.

History of original corner establishment:



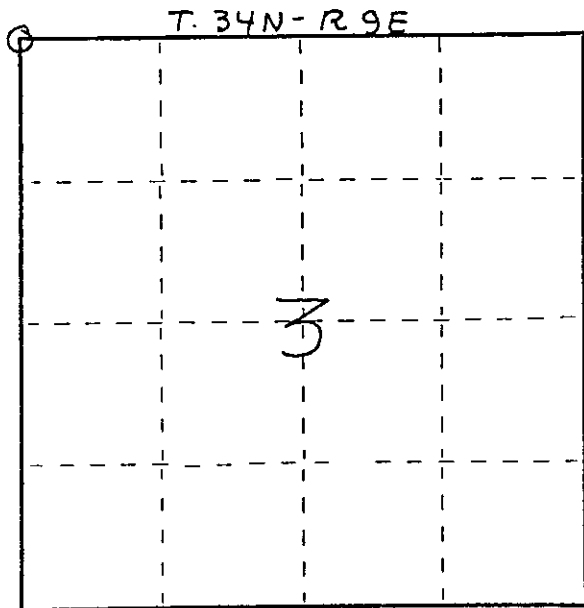
William F. Kelly 12-28-76

I WILLIAM F. KELLY, do hereby certify that on the 28<sup>TH</sup> day of DECEMBER, 1976, I found evidence of the SECTION corner of SECTIONS 33, 34, 4, 3 Township 34, 35, North, Range 9E, Fourth Principal Meridian, as described hereon; and that from this evidence I established a new monument and accessories as described hereon to perpetuate the original location of this corner.

Description of corner evidence found:  
FOUND MONUMENT LYING ON ITS SIDE.  
SECT. COR.  $\frac{T35N}{33/34}$  ON THE COUNTY LINE.  
 $\frac{4/3}{T34N}$

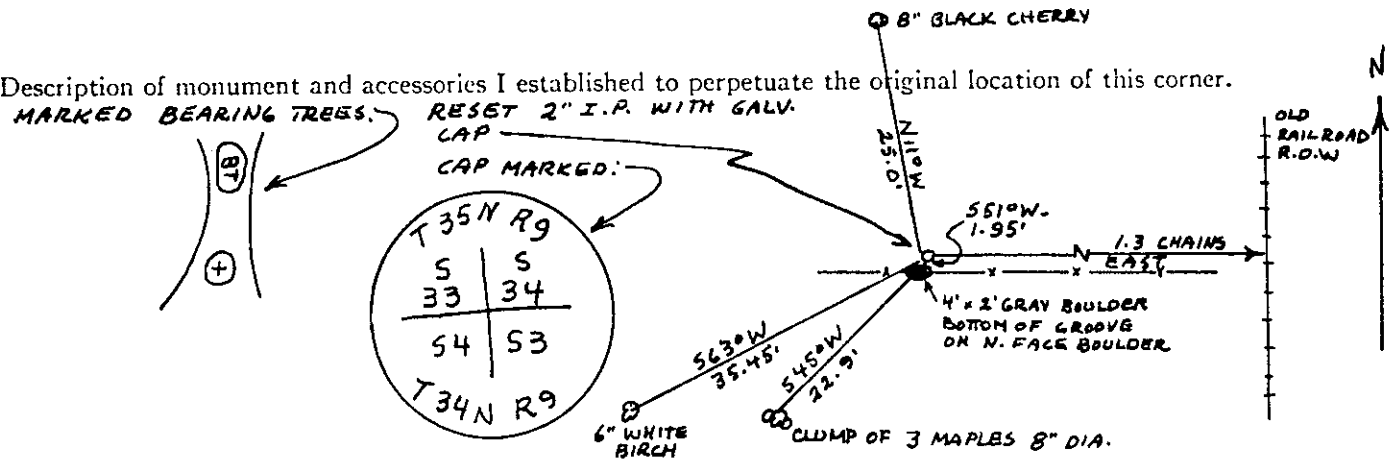
Resident witnesses:

FORM 985 W. C. MILLER CO., MILWAUKEE



○ = Corner monument restored.

Description of monument and accessories I established to perpetuate the original location of this corner.



Dated at ELCHO, Wis., this 28<sup>TH</sup> day of DECEMBER, 1976.

Signature William F. Kelly Title REGISTERED LAND SURVEYOR Registration No. 51098  
(County Surveyor, Registered Land Surveyor, or other duly authorized official)

Office of Register of Deeds, County of \_\_\_\_\_, I hereby certify that the within instrument was filed in this office for record on the \_\_\_\_\_ day of \_\_\_\_\_, 19\_\_\_\_ at \_\_\_\_\_ o'clock \_\_\_\_\_ M.

(Register of Deeds)

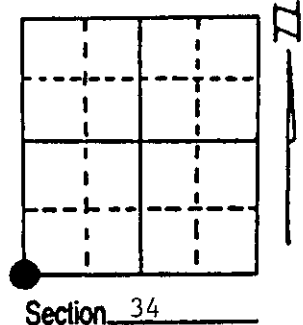
By \_\_\_\_\_ Deputy

3504330000

# U.S. PUBLIC LAND SURVEY MONUMENT RECORD

**Note:** This form is intended and designed to fulfill all requirements of Wisconsin Administrative Code, Chapter A-E 7.08 U.S. Public Land Survey Monument Record (3) (a) (b) (c) (d) (e) (f) (g) (h) (i). An additional sheet may be added if necessary to conform with said requirements.

**(a) Corner location:** Township 35 North  
 Range 9 East/West  
 Town/City/Village Enterprise  
 County Oneida

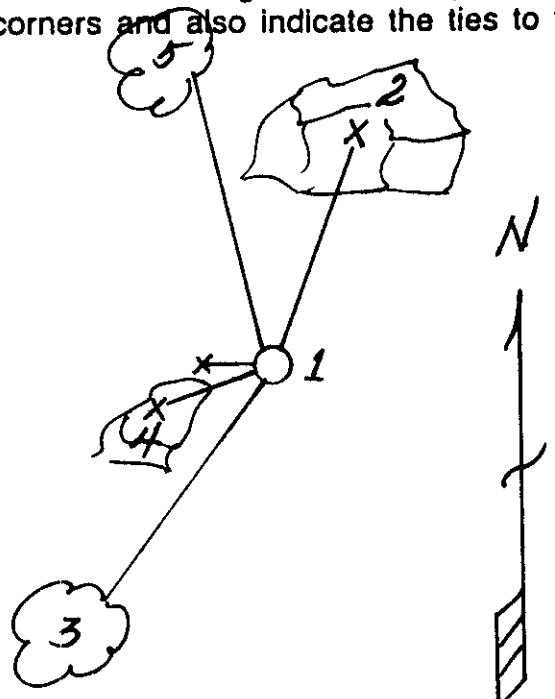


**(b) (f) (g) (h) Description of monument found at this corner and if it was accepted, state all evidence (material, testimonial, occupational, plats, records, other monuments) used as a basis for accepting. If not accepted or if nothing was found, state evidence used as basis for establishing location. If reestablished through lost corner proportionate methods, indicate all monuments, distances and directions used to establish. Indicate type of monument found or set and sign post.**

- 7/3/1859 - Hiram C. Fellows set post for Section Corner and made four BTs:  
 24" Lynn, N30°E, 9 Links (5.94')    9" Sugar, S45°W, 12 Links (7.92')  
 12" Sugar, S35°E, 16 Links (10.56')    28" Red Oak, N82°W, 50 Links (33.0')
- 7/20/1935 - Maine found original Sugar BT - a stump S45°W, 12 Links (7.92'). Set 2" x 60" iron pipe/brass cap and made one new reference:  
 48" Grey Boulder, N68°E, 35 Links (23.1')
- 12/28/1976 - Wm. Kelly found 2" x 60" iron pipe/brass cap and made four new BTs:  
 8" Black Cherry, N11°W, 25.0'    6" White Birch, S63°W, 35.45'  
 8" Maple (Clump of 3), S39°W, 35.45'    4' x 2' Grey Boulder, S60°W, 1.95'
- 8/25/1994 - Milo E. Stefan found monument tipped badly; Birch BT - dead; and distance to Maple in error.  
 We reset monument 18" in ground, made new references and set plastic sign post.

**(c) (d) (e) Plan view of corner with ties to at least 4 witness monuments. If in disagreement with previously established corner, show the distances between the two corners and also indicate the ties to the disputed corner.**

- 1) 2" x 60" Iron Pipe/Brass Cap.
  - 2) 4' x 5' x 3' High Grey Bounder/"+"  
 N55°E, 23.08' (This was Maine's reference.)
  - 3) 8" Sugar Maple, S39°W, 22.90'.
  - 4) 4' x 2' x 2' High grey Boulder/"+"  
 S60°W, 2.60'.
  - 5) 8" Black Cherry, N5°W, 25.16'.
  - 6) Plastic Sign Post, West, 2.6'.
- Distances to nail in side of BT, or "+" Chiseled in Boulders.



(i) I, Milo E. Stefan  
 (type or print name) certify that the corner location on this record was determined by me or under my direction and control and that this U.S. Public Land Survey Monument Record is correct and complete to the best of my knowledge and belief.

Milo E Stefan                                  10/9/94  
 Signature    Date



Index No. 2-13

3509330000

Stamp