

Stock No. 26273

U. S. PUBLIC LAND SURVEY MONUMENT RECORD

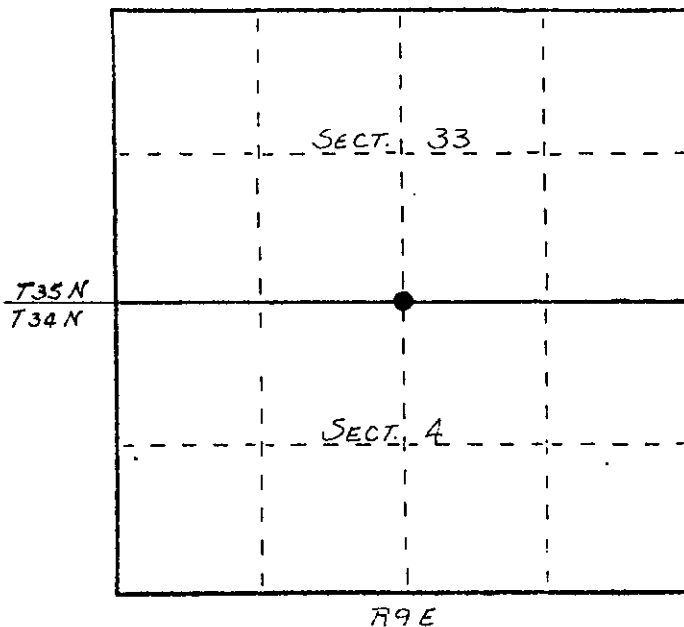
INSTRUCTIONS: This record shall show the location of the corner and shall include all of the following nine elements (a through i).

(a) Identify the corner by reference to the U.S. public land survey system.

O = Corner monument restored.

ORIGINAL CORNER ESTABLISHED BY HIRAM C. FELLOWS IN OCT., 1859.

CORNER RE-ESTABLISHED DURING 1930'S C.C.C. RESURVEY.

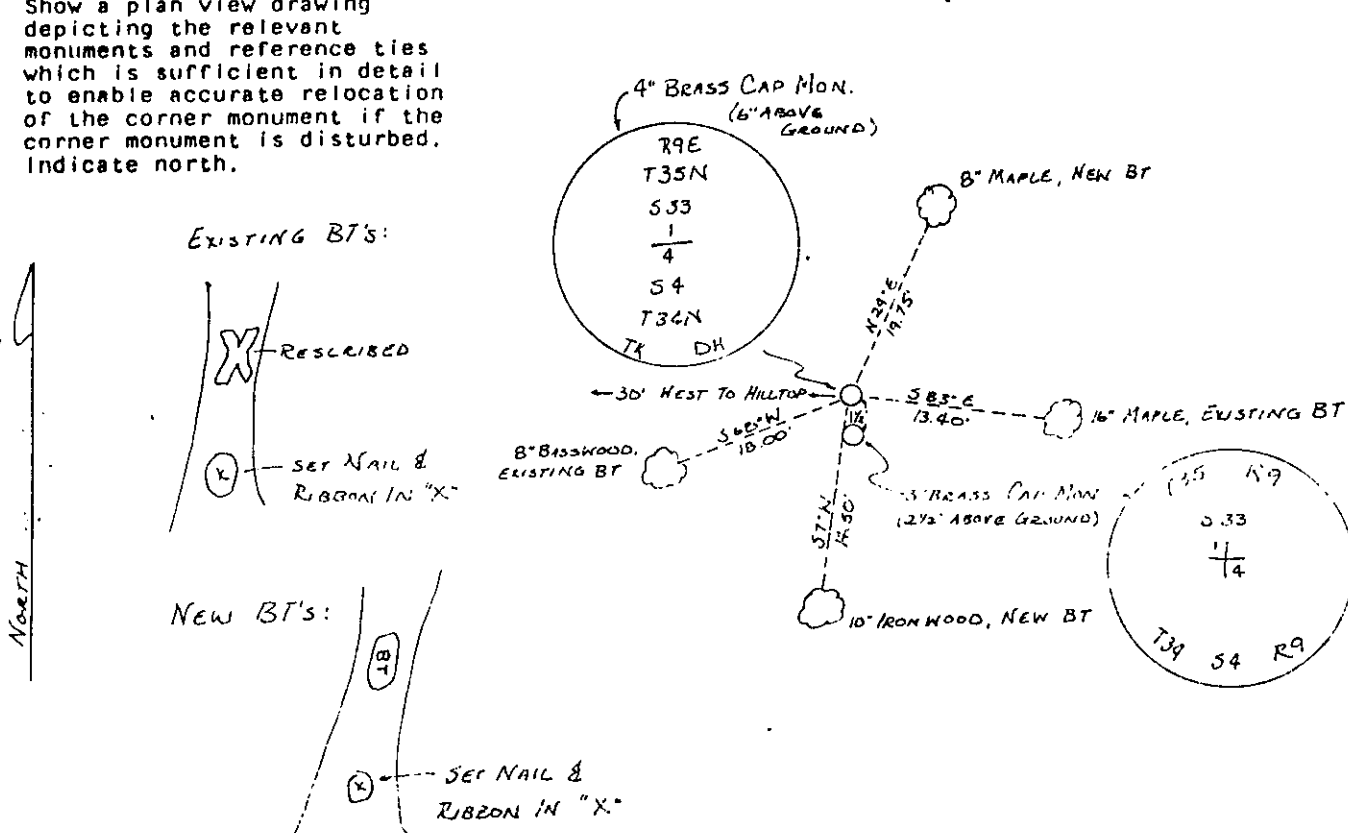


(b) Describe any record evidence, monument evidence, occupational evidence, testimonial evidence or any other material evidence you considered, and whether the monument was found or placed.

FOUND IN PLACE: 4" BRASS CAP MONUMENT IDENTIFIED AS CORNER IN RESURVEY  
 3" " " "

(c) In the plan view drawing below, provide reference ties to at least 4 witness monuments, or, if the location is within a municipality, to at least 2 witness monuments. (Witness monuments shall be made of concrete, natural stone, iron or other equally durable material.) Describe witness monuments.

(d) Show a plan view drawing depicting the relevant monuments and reference ties which is sufficient in detail to enable accurate relocation of the corner monument if the corner monument is disturbed. Indicate north.



Copy From  
Kanglake City.

T34N  
R9E

(e) Describe any material discrepancy between the location of the corner as restored or reestablished and the location of that corner as previously restored or established by distance and direction. Show the discrepancy on the plan view drawing under (d), above. Show the distances between the corner as previously restored or reestablished and (1) the corner as restored or reestablished, and (2) to at least 2 of the witness monuments shown on the drawing in (d), above.

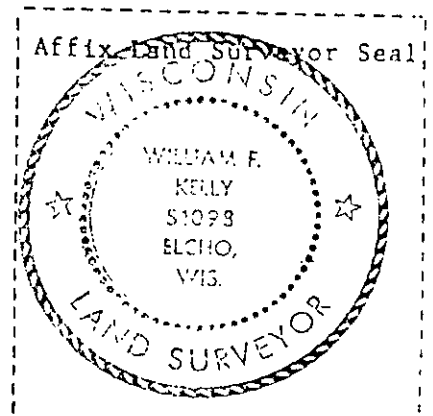
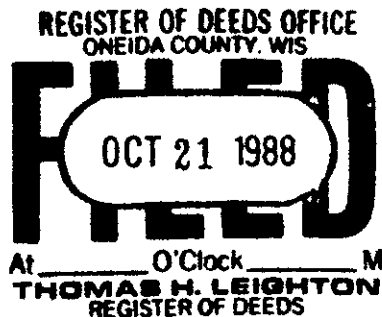
NONE.

(f) Was the corner restored through acceptance of (1) an obliterated evidence location, or, (2) a found perpetuated location?

(2)

(g&h) Was the corner reestablished through lost corner proportionate methods? If so, show the method, including the directions and distances to other public land survey corners used as evidence or used for proportioning in determining the corner location?

No.



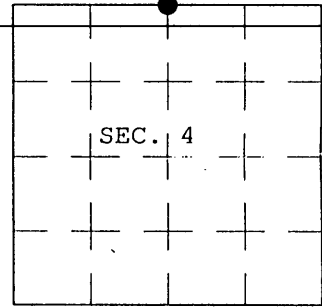
(1) I, William F. Kelly  
(Type or print name) certify that the corner location shown on this record was determined by me or under my direction and control and that this U.S. Public Land Survey Monument Record is correct and complete to the best of my knowledge and belief.

William F. Kelly      11-28-89  
Signature      Date

**U.S. PUBLIC LAND SURVEY MONUMENT RECORD**

Note: This form is intended and designed to fulfill all requirements of Wisconsin Administrative Code, Chapter A-E 7.08 U.S. Public Land Survey Monument Record (3) (a) (b) (c) (d) (e) (f) (g) (h) (i). An additional sheet may be added if necessary to conform with said requirements.

(a) CORNER LOCATION: Plane Coordinates  
 1/4 Corner of Secs. 4 & 33 X:  
 Township 34 & 35 North Y:  
 Range 9 East of the 4th P.M. Datum:  
 Town of Parrish County of Langlade



(b) HISTORY OF ORIGINAL CORNER ESTABLISHMENT

Original Surveyor: Hiram C. Fellows Original Accessories:  
 Date of Survey: Commenced July, 1859 Birch 7" S.20°W., 10 lks.  
 Completed July, 1859 Sugar 8" N.72°W., 10 lks.

(b) (f) (g) (h) Description of monument found at this corner and if it was accepted, state all evidence (material, testimonial, occupational, plats, records, other monuments) used as a basis for accepting. If not accepted or if nothing was found, state evidence used as basis for establishing location. If re-established through lost corner proportionate methods, indicate all monuments, distances and directions used to establish. Indicate type of monument and sign post found or set.

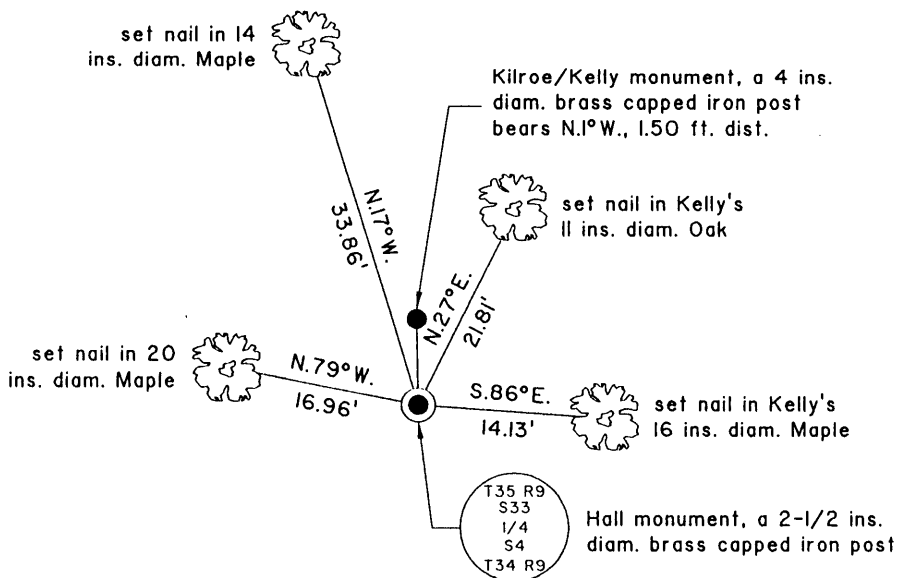
May, 1936: T.H. Kilroe determines the West three miles of the line common to Townships 34 and 35 North, Range 9 East to be lost. He re-establishes the corners on this line by running a straight line between controlling corners. "38.59 chs. set 1/4 cor., Maple 12" N.3-1/2°W., 21.66; Maple 12" S.48°E., 42"

December, 1937: H.C. Hall determines the West three miles of the line common to Townships 34 and 35 North, Range 9 East to be lost. He re-establishes the corners on this line by running a rhumb (curved) line between controlling corners. "1/4 stake official corner BTs: Maple 15" N.4°W., .24; Maple 15" S.51-1/2°E., .406"

November 28, 1984: William Kelly prepares a U.S. Public Land Survey Monument Record and accepts the Kilroe monument with no indication that he recovered Hall's notes. Kelly's monument record is filed in the office of the Oneida County Register of Deeds.

January 3, 2004: I found and accepted Hall's monument, a 2-1/2 ins. diam. iron post, projecting 28 ins. above the ground with brass cap mkd. as shown below. Hall's method is accepted practice in re-establishing lost corners of the U.S. Public Land Survey System. The corner is witnessed by Hall's stump hole, bears N.4°W., 16 ft. dist. and Hall's small Maple clump, bears S.51°E., 27 ft. dist. I established accessories as shown below and set a plastic sign post bearing South, 1 ft. dist.

(c) (d) (e) Plan view of corner with ties to at least 4 witness monuments. If in disagreement with previously established corner, show the distances between the two corners and also indicate the ties to the disputed.



Magnetic  
NO SCALE

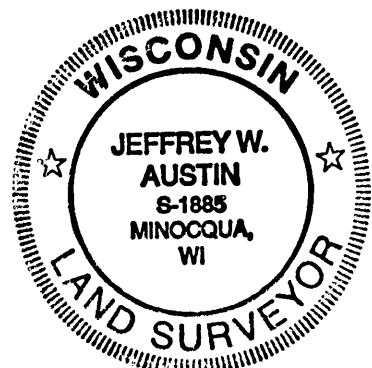
*Copies from  
Langlade County  
SEE Survey Map  
B-5548*

(i) I, Jeffrey W. Austin, Registered Land Surveyor No. S-1885, hereby certify upon honor that the corner location on this record was determined by me or under my direction and control and that this U.S. Public Land Survey Monument Record is correct and complete to the best of my knowledge and belief.

Signature

Date

*21 FEB 2004*



INDEX NO. 2-11

3509330020