

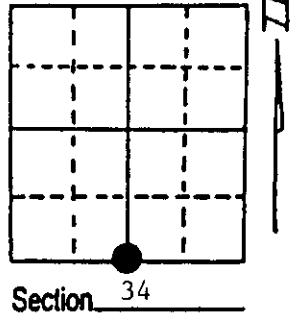
# U.S. PUBLIC LAND SURVEY MONUMENT RECORD

**Note:** This form is intended and designed to fulfill all requirements of Wisconsin Administrative Code, Chapter A-E 7.08 U.S. Public Land Survey Monument Record (3) (a) (b) (c) (d) (e) (f) (g) (h) (i). An additional sheet may be added if necessary to conform with said requirements.

(a) Corner location: Township 35 North  
 Range 9 East/West

Town/City/Village Enterprise

County Oneida



(b) (f) (g) (h) Description of monument found at this corner and if it was accepted, state all evidence (material, testimonial, occupational, plats, records, other monuments) used as a basis for accepting. If not accepted or if nothing was found, state evidence used as basis for establishing location. If reestablished through lost corner proportionate methods, indicate all monuments, distances and directions used to establish. Indicate type of monument found or set and sign post.

7/3/1859 - Hiram C. Fellows established this corner at 40.00 Chains, setting a wood post with two BTs:  
 12" Aspen, N5°E, 8 Links (5.28')      6" Hemlock, S45°W, 15 Links (9.90')

10/3/1994 - Milo E. Stefan found a 4" x 36" iron pipe with damaged brass cap (W.C.) bulldozed out and lying at edge of Highway "Q" clearing. As position could not be verified, I restored this corner by measurement from Section Corners East and West. Distances were found to be 2722.08'. By using this distance for departure, and the centerline of current highway from the West for latitude, a position was established South of centerline as the highway does curve at this Quarter Corner.

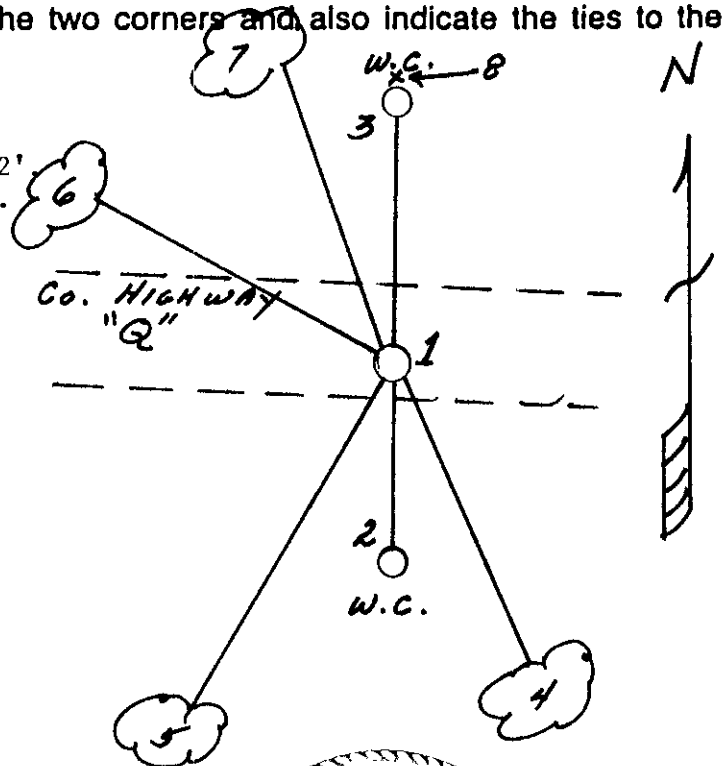
We set a railroad spike to mark this position, two Witness Corners, four BTs and plastic sign post.

See reverse for sketch.

(c) (d) (e) Plan view of corner with ties to at least 4 witness monuments. If in disagreement with previously established corner, show the distances between the two corners and also indicate the ties to the disputed corner.

- 1) Railroad Spike in blacktop.
- 2) 4" x 36" iron pipe, concrete filled with broken off brass cap, South, 32.72'
- 3) 2" x 36" aluminum monument, North, 50.00'.
- 4) 6" Tamarack, S22°E, 59.90'.
- 5) 8" Tamarack, S22°W, 118.91'.
- 6) 10" Red Pine, N77°W, 114.22'.
- 7) 14" Red Oak, N14°W, 105.43'.
- 8) Plastic Sign Post, North, 51.7'.

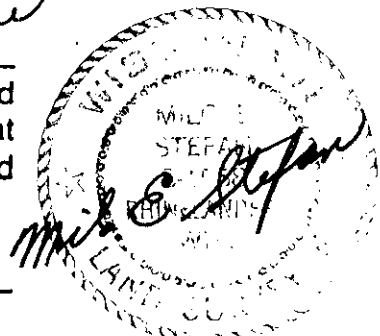
Distances to nail in side of BTs.  
 Stump blazes scribed "BT".



(i) I, Milo E. Stefan  
 (type or print name) certify that the corner location on this record was determined by me or under my direction and control and that this U.S. Public Land Survey Monument Record is correct and complete to the best of my knowledge and belief.

Milo E Stefan  
 Signature

10/9/94  
 Date



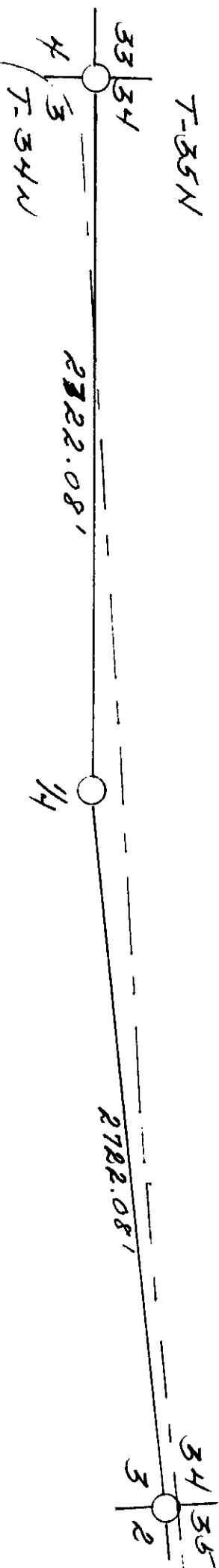
Stamp

3509 34 0020

Index No. 7-15

APPROXIMATE  
HIGHWAY  
"Q"

R9E



*Wade E. Johnson*

REGISTER OF DEEDS OFFICE  
ONEIDA COUNTY, WIS  
**FILED**  
JAN 17 1995  
At \_\_\_\_\_ O'Clock \_\_\_\_\_ M  
THOMAS H. LEIGHTON  
REGISTER OF DEEDS