

CERTIFIED LAND CORNER RESTORATION

Index No. **C1**

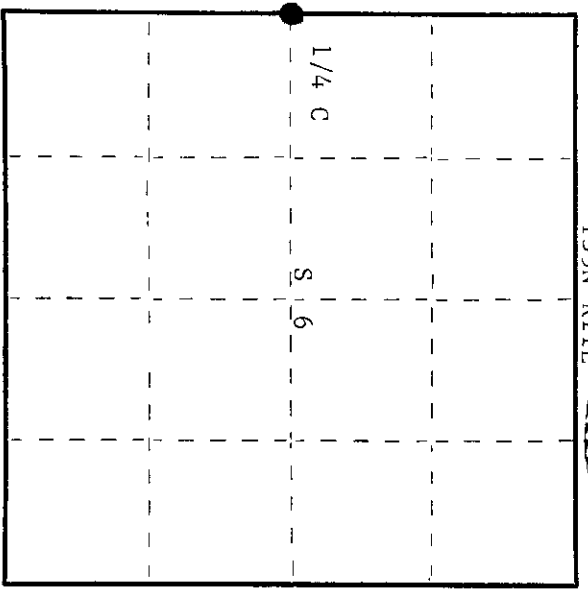
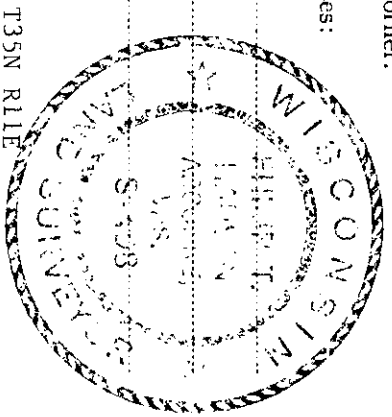
State of Wisconsin

County of Oneida } ss.

I, Phillip T. Hansen, do hereby certify that on the 22nd day of August, 1975, I found evidence of the Quarter corner of Sections 1 and 6 Township 35, North, Range 10 and 11 East, Fourth Principal Meridian, as described hereon; and that from this evidence I established a new monument and accessories as described hereon to perpetuate the original location of this corner.

Resident witnesses:

Glen Barker
Jim Claflin



○ = Corner monument restored.

CERTIFIED LAND CORNER RESTORATION

Index No. **C1**

History of original corner establishment:
Original corner established by Hiram C. Fellows, Government Deputy Surveyor, in 1859 from which birch 10" bears N73°W, 9 links and hemlock 6" bears S31°E, 5 links. Corner re-established by H.C. Lawrence, Registered Land Surveyor, in 1949. He ran this line south from Section Corner at 36.82, found stake in center line of road with BT 16" white pine N79°W, 92-1/2 links at 37.72 chains, he intersected a point where old 1/4 line runs east in Section 6. This was south line of State 40 with virgin timber and recent cutting to south. At 77.75 intersect SW corner at fence line between Sections 1 and 12. Set 4" cedar post at 37.72, witness corner, 50 links east.

Description of corner evidence found:
Recovered 4" cedar post, squared and scribed 1/4S S1 W.C. 50 links east, 1/4S S6 in good condition.

Description of monument and accessories I established to perpetuate the original location of this corner.
Drove 1-1/2" OD x 18" iron pipe in road flush with the ground for corner. Replaced wooden witness corner with 2-1/2" iron pipe w/brass cap stamped -

The iron pipe 1-1/2" x 18" sits on the east side of the range line road.
NBT's: Cedar 9" N64°W 86 links-scribed 1/4 BT
White birch 6" S80°E 74.5 links-scribed 1/4 BT
Bearings and distances to BT's are from the true corner.

Dated at Rhinelander, Wis., this 12th day of September, 1975.
Signature Phillip T. Hansen Title Registered Land Surveyor Registration No. S-498
(County Surveyor, Registered Land Surveyor, or other duly authorized official)

Office of Register of Deeds, County of Oneida.
Instrument was filed in this office for record on the 17th day of November, 1975 at 10:08 o'clock A. M.
Doris Savage Fuchs
(Register of Deeds)

By _____ Deputy

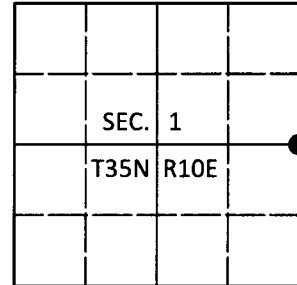
3510012000

U.S. PUBLIC LAND SURVEY MONUMENT RECORD

Note: This form is intended and designed to fulfill all requirements of Wisconsin Administrative Code, Chapter A-E 7.08 U.S. Public Land Survey Monument Record (3)(a-i).

(a) CORNER LOCATION
 1/4 Cor. of Secs. 1 & 6
 Township 35 North
 Range 10 & 11 East of the 4th P.M.
 Town of Schoepke
 County of Oneida

WISCORS - Oneida County
 N: 131,796.27 USft
 E: 324,609.61 USft
 Datum: NAD 83(2011)
 GNSS Method: RTN - Direct
 GNSS Control: WISCORS VRS



(b) HISTORY OF ORIGINAL CORNER ESTABLISHMENT

Original Surveyor:

Original Accessories:

Date of Survey

Commenced:
 Completed:

See previous USPLS Monument Record

(b)(f)(g)(h) Description of monument found at this corner and if it was accepted, state all evidence (material, testimonial, occupational, plats, records, other monuments) used as a basis for accepting. If not accepted or if nothing was found, state evidence used as basis for establishing location. If re-established through lost corner proportionate methods, indicate all monuments, distances and directions used to establish. Indicate type of monument and sign post found or set.

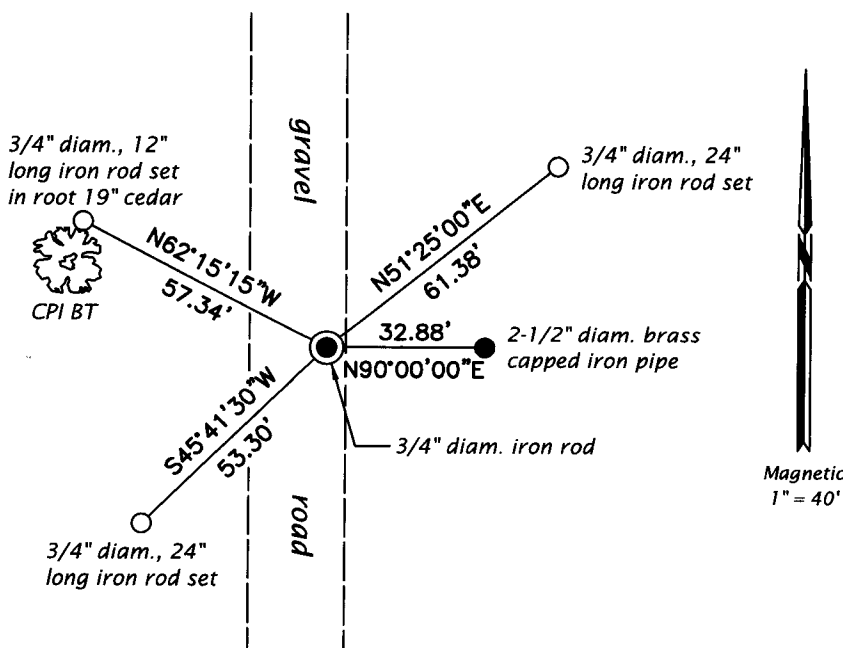
This is a perpetuation of a previous USPLS Monument Record by Philip T. Hansen, RLS dated September 12, 1975 and filed in the office of the Oneida County Register of Deeds. A complete history of the corner can be found on the previous monument record. I accept the previous location as a true and faithful perpetuation or reestablishment of the original corner location and further perpetuate it as follows.

November 12, 2002: OCS Map No. B-5158 by William Bandow, RLS identifies corner as marked by a 1-1/4" diam. iron pipe set from the remaining record witness ties.

June 20, 2018: I found and accepted the record monument, a bent 1-1/2" diam., 24" long iron pipe on the East edge of the roadway. I replaced the pipe with a 3/4" diam., 30" long iron rod buried 8" beneath the road surface. The record birch bearing tree is still green, now 10" diam. I found or established accessories as shown below. I found a white vinyl sign post adjacent to the brass capped iron pipe.

The coordinate value shown has been verified by at least one of the following methods: 1) comparison to a previously GPS determined published value; 2) the value is the average of two or more GPS observations at a markedly different time; 3) one or more distances were measured back to the GPS observed corner from temporary GPS observed offset locations.

(c)(d)(e) Plan view of corner with ties to at least 4 witness monuments. If in disagreement with previously established corner, show the distances between the two corners and also indicate the ties to the disputed.



REGISTER OF DEEDS OFFICE
 ONEIDA COUNTY
 FILED

JUL 12 2018

KYLE J. FRANSON
 REGISTER OF DEEDS

(i) I, Jeffrey W. Austin, Professional Land Surveyor No. S-1885, hereby certify that the corner location on this record was determined by me or under my direction and control and that this U.S. Public Land Survey Monument Record is correct and complete to the best of my knowledge and belief.

[Handwritten Signature]

 Signature

JUNE 30, 2018

 Date