

State of Wisconsin

County of Oneida

ss.

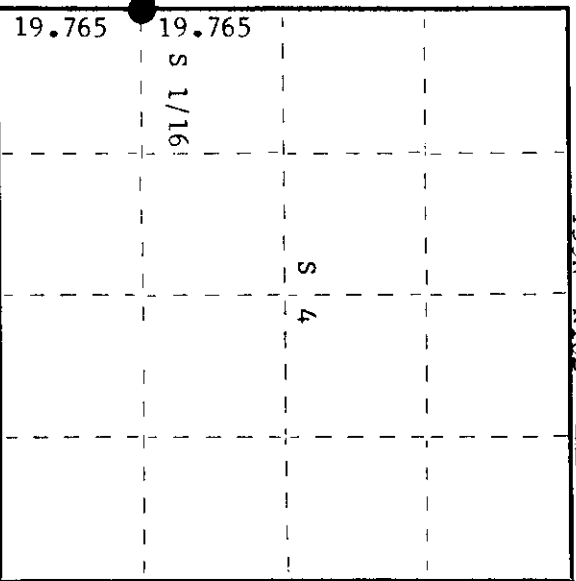
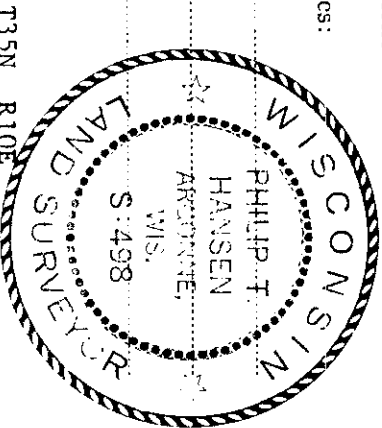
I Phillip T. Hansen, do hereby certify that on the 21st day of June, 1977, I found evidence of the S 1/16 corner of Section 4 & 5 Township 35 North, Range 10 East, Fourth Principal Meridian, as described hereon; and that from this evidence I established a new monument and accessories as described hereon to perpetuate the original location of this corner.

Resident witnesses:

Glen Barker

Jim Clafin

Herb Wagoner



○ = Corner monument restored.

History of original corner establishment:

Corner established by N. Loftus, Ripco Surveyor, in 1957. From previously established W 1/4 corner, set S 1/16 corner at 19.765 chains intermediate to Section Corner 4, 5, 7 & 8. Set iron pipe and marked NBTs - Cedar 10" N2°W, 49 links Cedar 5" S11°W, 47 links.

Description of corner evidence found:

Recovered 1 1/2" iron pipe with 2" square brass cap projecting 18" above ground - cap stamped: Monument recovered in good condition.

Recovered OBTs - Cedar 12" N2°W, 49 links, scribed 1/16 S5 BT.

Cedar 6" S11°W (S11°E) 47 links (46.7 lks), scribed 1/16 S4 BT.

S 1/16
S5 | S4
RIFCO

Description of monument and accessories I established to perpetuate the original location of this corner. Monument left as recovered. Marked NBT - Cedar 6" N86°E, 33.7 links, scribed 1/16 BT.

3510051000

Dated at Rhinelander, Wis., this 30th day of June, 1977

Signature: *Philip T. Hansen* Title: Registered Land Surveyor Registration No. S-498 (County Surveyor, Registered Land Surveyor, or other duly authorized official)

Office of Register of Deeds, County of Oneida. I hereby certify that the within instrument was filed in this office for record on the 30th day of July, 1977 at 3:00 o'clock P.M.

Terri Urage Tuel (Register of Deeds)

By: *Joseph M. Boerner* Deputy