

CERTIFIED LAND CORNER RESTORATION

Index No. **B-9**

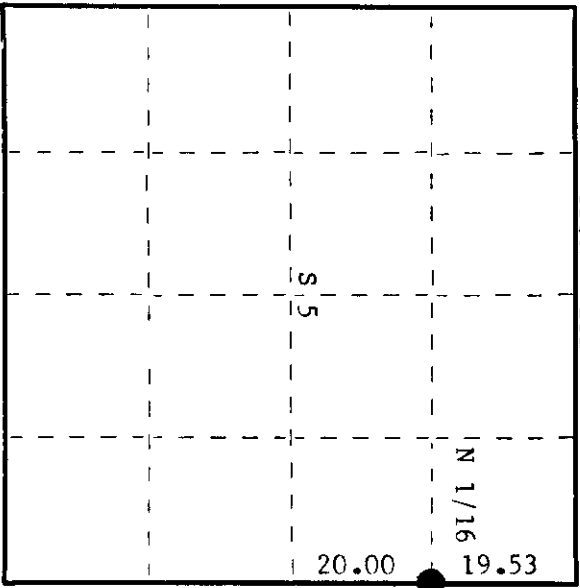
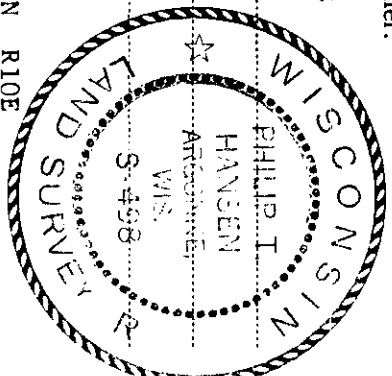
State of Wisconsin

County of Oneida } ss.

I Phillip T. Hansen, do hereby certify that on the 21st day of June, 1977, I found evidence of the N 1/16 corner of Section 4 & 5 Township 35, North, Range 10 East, Fourth Principal Meridian, as described hereon; and that from this evidence I established a new monument and accessories as described hereon to perpetuate the original location of this corner.

Resident witnesses:

- Glen Barker
- Jim Clafin
- Herb Wagoner



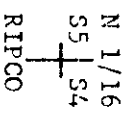
○ = Corner monument restored.

History of original corner establishment:

Corner established by N. Loftus, Ripco Surveyor, in 1957. From previously established 1/4 corner between Section 4 and 5, set N 1/16 corner at 20.00 chains N 2° 52' 30" W of 1/4 corner. Set iron pipe and marked NBTs - Black Spruce 7" S59°E, 49 links. Black Spruce 8" N12°W, 11½ links.

Description of corner evidence found:

Recovered 1½" iron pipe with 2" square brass cap in good condition, projecting 12" above ground. Cap stamped:
 Recovered OBTs - Black Spruce 9" S59°E, 49 links, scribed 1/16 BT.
 Black Spruce 8" N12°W, 11.5 links, down.



Description of monument and accessories I established to perpetuate the original location of this corner.
 Monument left in place as recovered.
 NBT - Black Spruce S69°W, 31.2 links, scribed 1/16 BT.

Dated at Rhineland, Wis., this 30th day of June, 1977

Signature: Phillip T. Hansen Title: Registered Land Surveyor Registration No. S-498
 (County Surveyor, Registered Land Surveyor, or other duly authorized official)

Office of Register of Deeds, County of Oneida, I hereby certify that the within instrument was filed in this office for record on the 21st day of July, 1977 at 10 o'clock A. M.

Tonia George Kuehn
 (Register of Deeds)

By: Joseph M. Boerner Deputy

3510053000