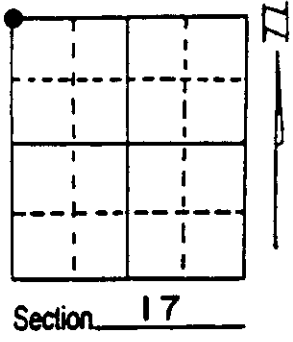


U.S. PUBLIC LAND SURVEY MONUMENT RECORD

Note: This form is intended and designed to fulfill all requirements of Wisconsin Administrative Code, Chapter A-E 7.08 U.S. Public Land Survey Monument Record (3) (a) (b) (c) (d) (e) (f) (g) (h) (i). An additional sheet may be added if necessary to conform with said requirements.

(a) Corner location: Township 35 North
 Range 10 East/West XXXX
 Town/City/Village ENTERPRISE
 County ONEIDA

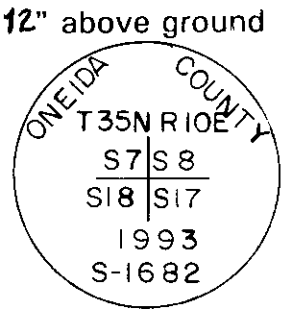


(b) (f) (g) (h) Description of monument found at this corner and if it was accepted, state all evidence (material, testimonial, occupational, plats, records, other monuments) used as a basis for accepting. If not accepted or if nothing was found, state evidence used as basis for establishing location. If reestablished through lost corner proportionate methods, indicate all monuments, distances and directions used to establish. Indicate type of monument found or set and sign post.

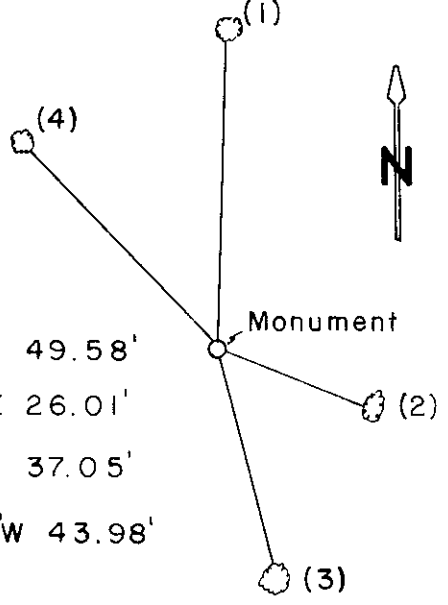
Reestablished corner by double proportion method. No evidence of original or other subsequent corner. Testing retracement control of adjacent sections proved to be unacceptable. CPI field maps dated January, 1946 indicates a squared aspen stump for corner. This position on the old map is in the same immediate area as the corner we reestablished by double proportion.

Controlling corners to reestablish Section corner 7, 8, 17, 18 were 1/4 corner between Sections 7 and 18 to 1/4 corner between Sections 8 and 17. Section corner 17, 18, 19 and 20 to 1/4 corner between Sections 7 and 8. Proportion distance to G.L.O. Survey
 S89° 09'47"E 2623.90' (2640.0' G.L.O.) of 1/4 corner between Sections 7 & 18
 S01° 16'37"W 2582.88' (2640.0' G.L.O.) of 1/4 corner between Sections 7 & 8
 N89° 22'57"W 2594.26' (2610.30' G.L.O.) of 1/4 corner between Sections 8 & 17
 (See back side)

(c) (d) (e) Plan view of corner with ties to at least 4 witness monuments. If in disagreement with previously established corner, show the distances between the two corners and also indicate the ties to the disputed corner.



2-1/4" Aluminum Oneida County Monument

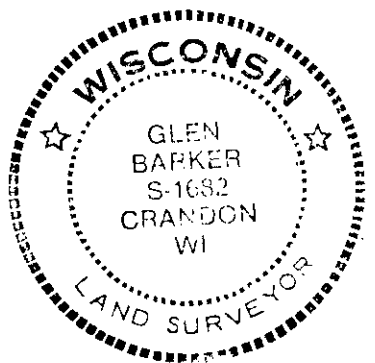


- (1) 4" Red Maple N1°E 49.58'
- (2) 6" Balsam Fir S69°E 26.01'
- (3) 4" Red Maple S13°E 37.05'
- (4) 5" White Spruce N44°W 43.98'

(See Back)

(i) I, Glen Barker
 (type or print name) certify that the corner location on this record was determined by me or under my direction and control and that this U.S. Public Land Survey Monument Record is correct and complete to the best of my knowledge and belief.

Glen Barker
 Signature Date 9/6/94



Stamp

Index No. J-5

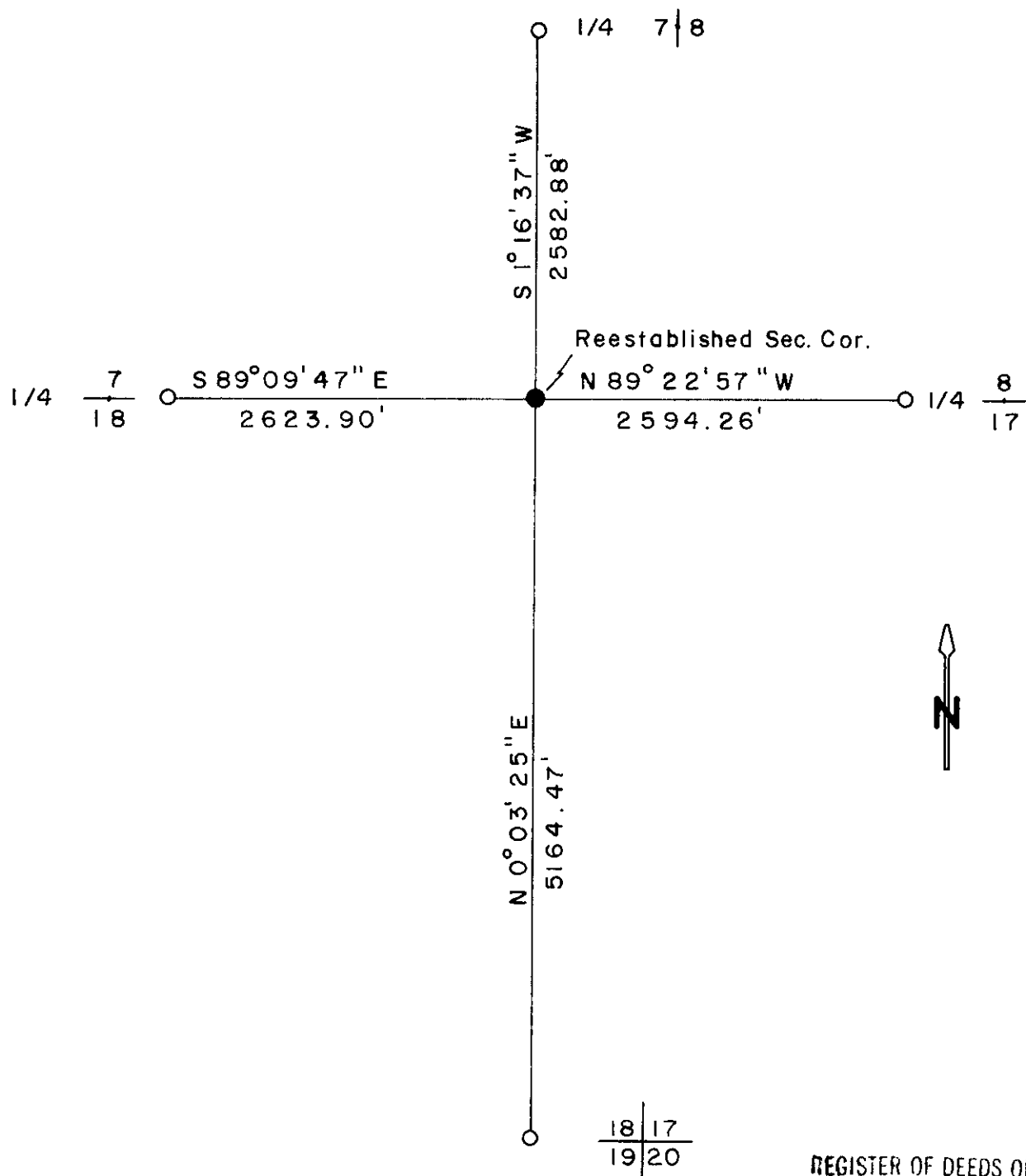
3510070000

N00° 03'25"E 5164.47' (5280.0' G.L.O.) of Section corner 17, 18, 19, 20

This position appears to be in the general area of old cutting lines and timber changes.

Original stream call has Section corner 15.25 ch. north of stream. Reestablished Section corner sets 15.15 ch. north of stream.

Original corner established by James L. Nowlin in 1865 from which 12" Spruce bears S60E, 5 links and 14" Tamarack N47W, 30 links.



REGISTER OF DEEDS OFFICE
ONEIDA COUNTY WIS
FILED
SEP 6 1994
At 2:32 O'Clock *P* M
THOMAS H. LEIGHTON
REGISTER OF DEEDS