

CERTIFIED LAND CORNER RESTORATION

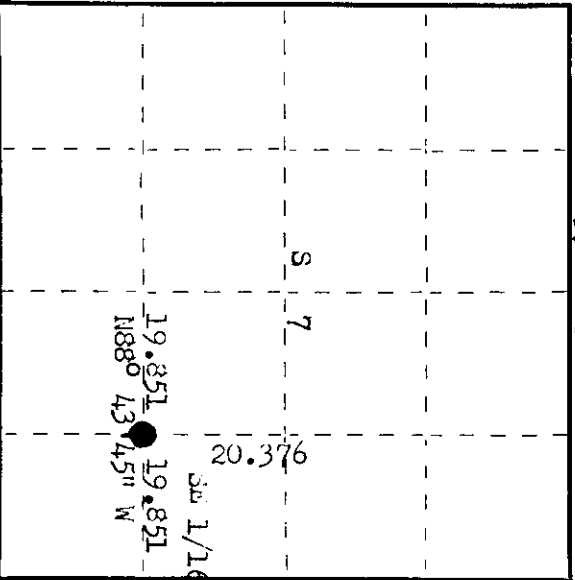
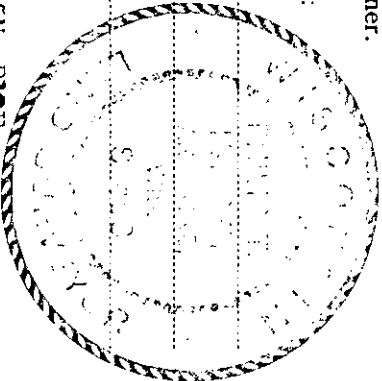
Index No. H-4

State of Wisconsin } ss.
 County of Oneida

I Phillip T. Hansen, do hereby
 certify that on the 31st day
 of March, 1976, I found
 evidence of the Sec. 1/16
 corner of Section 7
 Township 35, North, Range
10 East, Fourth Principal Meridian,
 as described hereon; and that from this evidence
 I established a new monument and accessories
 as described hereon to perpetuate the original
 location of this corner.

Resident witnesses:

Glen Barker
Jim Clafin
Herb Wagoner



History of original corner establishment: Corner established by Ripco surveyors in 1962. Set pin in road, and marked BTs - Basswood 13" W48° 97 1/2 lks and 1m 11" W45° 2.14 chains.

Description of corner evidence found: The pin set in road destroyed by construction work. Recovered OBTS - 1m 11" W45° 2.14 chs, scribing grown over, Basswood 13" (15") W48° 97.5 lks, scribing grown over. Located corner from intersection of calls to recovered BTs.

Description of monument and accessories I established to perpetuate the original location of this corner.
 Set a R.R. spike at true corner, below surface of black top. Set a 1" iron pipe with 2" brass cap W40°, 75 lks from corner. Cap stamped.
 witness corner projects 18" above ground.
 Corner sets 3 lks north of centerline of CTH G.
 witness Post and BTs painted blue.

3498
 T35N R10E
 Sec 1/16 27 W.C.
 340w 75 lks
 CRI-1976

Dated at Minneapolis, Wis., this 19th day of May, 1976

Signature Phillip T. Hansen Title Registered Land Surveyor Registration No. 5-498
 (County Surveyor, Registered Land Surveyor, or other duly authorized official)

Office of Register of Deeds, County of Oneida, I do hereby certify that the within instrument was filed in this office for record on the 13th day of June, 1976 at 2:00 o'clock P.M.

William G. Kuehn
 (Register of Deeds)

By: _____ Deputy

351007100