

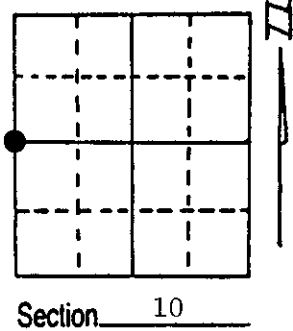
U.S. PUBLIC LAND SURVEY MONUMENT RECORD

Note: This form is intended and designed to fulfill all requirements of Wisconsin Administrative Code, Chapter A-E 5.02, U.S. Public Land Survey Monument Record (3) (a) (b) (c) (d) (e) (f) (g) (h) (i). An additional sheet may be added if necessary to conform with said requirements.

(a) Corner location: Township 35 North
 Range 10 East/West

Town/~~City/Village~~ Schoepke

County Oneida



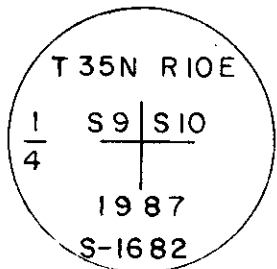
(b) (f) (g) (h) Description of monument found at this corner and if it was accepted, state all evidence (material, testimonial, occupational, plats, records, other monuments) used as a basis for accepting. If not accepted or if nothing was found, state evidence used as basis for establishing location. If reestablished through lost corner proportionate methods, indicate all monuments, distances and directions used to establish. Original corner established by James L. Nowlin, Deputy Surveyor in 1865, from which white pine 20: bears S53E 20 lks, and birch 8" bears N49W 12 lks.

In 1947 H.C. Lawrence recovered original 20" white pine (stp) S53E 20 links and set a 3"x3" cedar post and marked NBT white pine 24" S35E 88½ links and Fir 10" S40W, 19½ links. On April 22, 1987, recovered H.C. Lawrence's old 3"x3" squared and scribed cedar post. His 24" white pine S35E 88½ links is now a cut off stump. Laying beside Lawrence's post was RISCO's 1½" iron pipe with brass cap. Also recovered original 20" white pine decayed stump S53E 20 links. Scribe marks BT still legible.

(c) (d) (e) Plan view of corner with ties to at least 4 witness monuments. If in disagreement with previously established corner, show the distances between the two corners and also indicate the ties to the disputed corner. (SEE BACK)

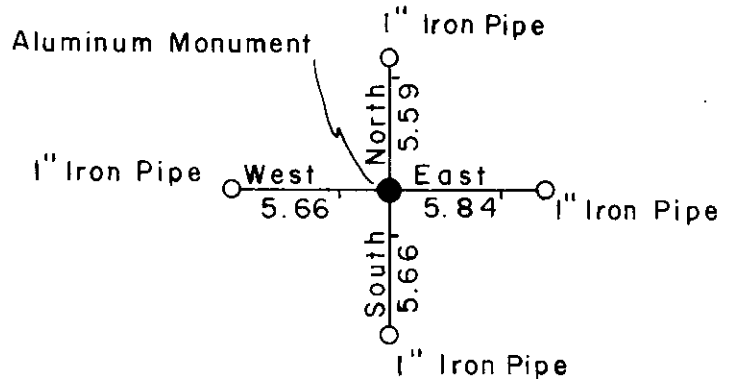
2-1/4" aluminum Oneida Co. Monument

Area has been logged off.
 Nothing suitable for B.T.'s.



Magnet in base

REGISTER OF DEEDS OFFICE
 ONEIDA COUNTY, WIS.
FILED
 JUL 23 1987
 At 8:00 O'Clock a M
 DORIS VERAGE KUEHN
 REGISTER OF DEEDS



(i) I, Glen Barker
 (type or print name) certify that the corner location on this record was determined by me or under my direction and control and that this U.S. Public Land Survey Monument Record is correct and complete to the best of my knowledge and belief.

Glen Barker Signature 7/7/87 Date



3510092000

Index No. G-13

9 10
1/4 Corner ● Remonumented

1310.02'

2620.04'

1310.02'

9 10
16 15

