

APR 17 2017

U.S. PUBLIC LAND SURVEY MONUMENT RECORD

Note: This form is intended and designed to fulfill all requirements of the Wisconsin Administrative Code, Chapter A-E 7.08 U.S. Public Land Monument Record (3)(a)(b)(c)(d)(e)(f)(g)(h)(i). An additional sheet may be added if necessary to conform with said requirements.

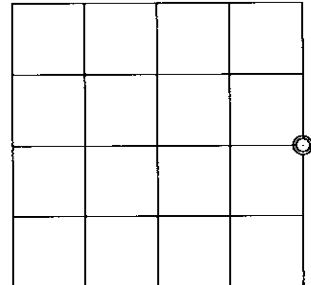
AT _____ O'CLOCK _____ M
KYLE J. FRANSON
REGISTER OF DEEDS

(a) CORNER LOCATION:
East Quarter Corner of Section 10
Township 35 North
Range 10 East
Town of Enterprise
County of Oneida

WISCRS - Oneida County
North: 126769.777 USft
East: 314183.609 USft
Latitude: 45°31'59.79232" N
Longitude: 89°12'57.50984" W
Datum: NAD 83(2011)
GNSS Method: RTK - Direct
GNSS Control: WISCORS VRS
Record North: 126769.795 USft
Record East: 314183.644 USft
Record Datum: NAD 83(1991)

(RECORDING AREA)

SECTION 10



(b) HISTORY OF ORIGINAL CORNER ESTABLISHMENT

Original Surveyor: James L. Nowlin
Date of Survey: Commenced Sept. 22nd, 1865
Completed October 2nd, 1865
Original B.T.'S: Tamarack 12" S 5°E 150 lks.
Tamarack 5" S 15°W 200 lks.

(f)(g)(h) DESCRIPTION OF MONUMENT FOUND AT THIS CORNER AND IF IT WAS ACCEPTED, STATE ALL EVIDENCE (MATERIAL, TESTIMONIAL, OCCUPATIONAL, PLATS, RECORDS, OTHER MONUMENTS) USED AS A BASIS FOR ESTABLISHING LOCATION. IF NOT ACCEPTED OR IF NOTHING WAS FOUND, STATE EVIDENCE USED AS BASIS FOR ESTABLISHING LOCATION. IF REESTABLISHED THROUGH LOST CORNER PROPORTIONATE METHODS, INDICATE ALL MONUMENTS, DISTANCES AND DIRECTIONS USED TO ESTABLISH. INDICATE TYPE OF MONUMENT AND SIGN POST FOUND OR SET.

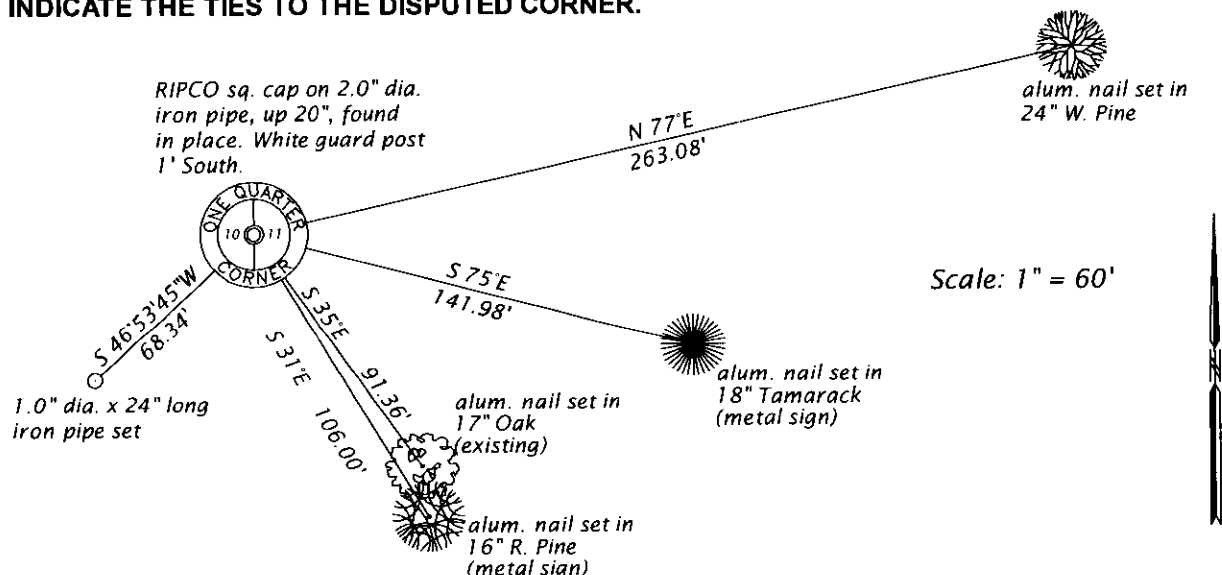
December 30, 1899 - D. h. Vaughan, County Surveyor, (Old Field Book 1, page 73 and transcribed to Dorr / Vaughan Book, page 300) post set from original bt's, the distance to west bearing is 10 links less than field notes call for, but course to both is correct, also distance to east one is correct.

February and March, 1960 - Loftus and crew & H. C. Lawrence, (RIPCO Field Book 3, page 80) recovered corner in river bottom; BT. Tam. ? S10°E, 2.16 chs. (142.56 feet).

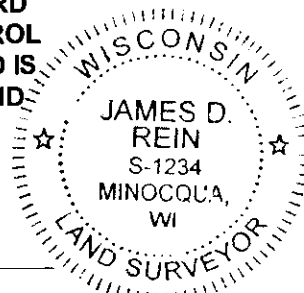
October 28, 1998 - Glen Barker, RLS No. 1682, map of survey in Section 10, T35N, R10E, filed in county survey records as B4031, identifies corner as a 2" Iron pipe w/ 4" Sq. Brass Cap Found. {CONTINUED ON REVERSE SIDE}

The coordinate value shown has been verified by at least one of the following methods: 1) comparison to a previously GPS determined published value; 2) the value is the average of two or more GPS observations at a markedly different time; 3) one or more distances were measured back to the GPS observed corner from temporary GPS observed offset locations.

(c)(d)(e) PLAN VIEW OF CORNER WITH TIES TO AT LEAST 4 WITNESS MONUMENTS. IF IN DISAGREEMENT WITH PREVIOUSLY ESTABLISHED CORNER, SHOW THE DISTANCE BETWEEN THE TWO CORNERS AND ALSO INDICATE THE TIES TO THE DISPUTED CORNER.



(i) I, JAMES D. REIN, PROFESSIONAL LAND SURVEYOR NO. S-1234 HEREBY CERTIFY THAT THE CORNER LOCATION ON THIS RECORD WAS DETERMINED BY ME OR UNDER MY DIRECTION AND CONTROL AND THAT THIS U.S. PUBLIC LAND SURVEY MONUMENT RECORD IS CORRECT AND COMPLETE TO THE BEST OF MY KNOWLEDGE AND BELIEF.



James D. Rein
SIGNATURE

4-10-17
DATE

INDEX NO. G-17
3510102000
OVER →

{CONTINUED FROM REVERSE SIDE}

March 23, 2017 - James D. Rein, Professional Land Surveyor No. S-1234, recovered 2" dia. iron pipe with a 3" sq. RISCO cap. See plan view for recovered and new reference ties.