

CERTIFIED LAND CORNER RESTORATION

Index No. E-17

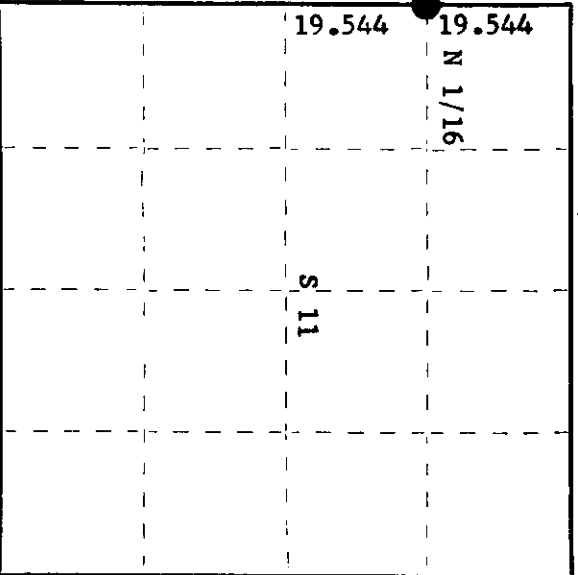
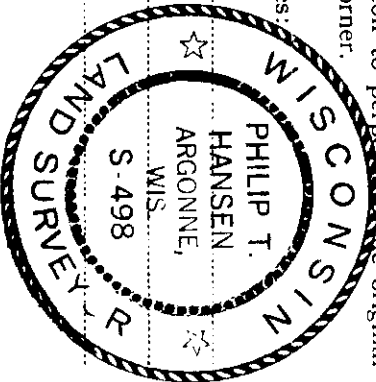
State of Wisconsin

County of Oneida } ss.

I, Phillip T. Hansen, do hereby certify that on the 28th day of June, 1978, I found evidence of the N 1/16 corner of Section 10 & 11 Township 35, North, Range 10 East, Fourth Principal Meridian, as described hereon; and that from this evidence I established a new monument and accessories as described hereon to perpetuate the original location of this corner.

Resident witnesses:

Jim Claflin  
Herb Wagoner  
John Masbaum



○ = Corner monument restored.

History of original corner establishment:

Corner established by N. Loftus, Ripco Surveyor, in 1960. Corner set by proportion. Ran line north, bearing 356° 24' 30" mag. from 1/4 corner between section 10 & 11, 114.41 chains to close out 2.92 chains west of section corner 34, 35, 2 & 3. Set N 1/16 corner at 19.544 chains. Marked new BT's - Maple 4" N44°W, 21-1/4 links and Maple 3" N90°E, 57 1/2 links.

Description of corner evidence found:

Recovered Ripco's 3/4" iron pipe with 2" square brass cap in good condition.  
Recovered OBT's - Maple 4" (6") N44°W, 21.25 links, scribing partially legible. Maple 3" (4") due east 57.5 links (57.2 links).  
Corner monument projects 3'. Cap stamped:

N 1/16  
S10 + S11  
T35N R10E  
RIPCO

Description of monument and accessories I established to perpetuate the original location of this corner.  
No additional accessories established.

Dated at Rhineland, Wis., this 10th day of July, 1978

Signature Phillip T. Hansen Title Registered Land Surveyor Registration No. S-498  
(County Surveyor, Registered Land Surveyor, or other duly authorized official)

Office of Register of Deeds, County of Oneida, I hereby certify that the within instrument was filed in this office for record on the 14th day of August, 1978 at 12:45 o'clock P. M.

Dorise Vernege Fuehr  
(Register of Deeds)

By: \_\_\_\_\_ Deputy

3510103000