

This form is intended to fulfill the requirements of Chapter A-E 7.08 (3)(a) thru (i) U.S. Public Land Survey Monument Location Record, Wisconsin Administrative Code. Use the reverse side of form for continuation.

**U.S. PUBLIC LAND SURVEY MONUMENT LOCATION RECORD**

Recorders Data

USPLS CORNER: EAST WITNESS MC SECTION: 14 TOWNSHIP: 35 NORTH RANGE: 10 EAST

NAME OF WATERWAY FOR M.C. CORNER : PELICAN LAKE SECTION LINE: NORTH

(CITY)(VILLAGE)(TOWN) OF: SCHOEPKE COUNTY OF: ONEIDA

Description of monument found or placed and all other evidence used as the basis for monument location; including monuments and related measurements required if the corner location was reestablished by lost corner proportionate methods. Also indicate name of original surveyor, original survey date and the corner monument, bearing trees, witness or other reference monuments established; including measured bearing and distance ties, from available records.

RECORD WITNESS MC LOST TO CONSTRUCTION SO I REESTABLISHED BY TRAVERSE, AS EXHIBITED ON REVERSE SIDE OF THIS LOCATION RECORD, WITH THE APPROVAL OF ONEIDA COUNTY SURVEYOR MICHAEL ROMPORTL.

In September 1865, James Nowlin/GLO set a wood post as the original corner and marked OBTs: a 15" Tamarack N34°W 55 links and an 8" Aspen S83°E 50 links; all now obliterated.

In January 1900, D.H. Vaughan noted he could not find original MC post and that GLO OBTs were both down and rotted per Page 78 of Old Fieldbook 1 in Oneida County survey records.

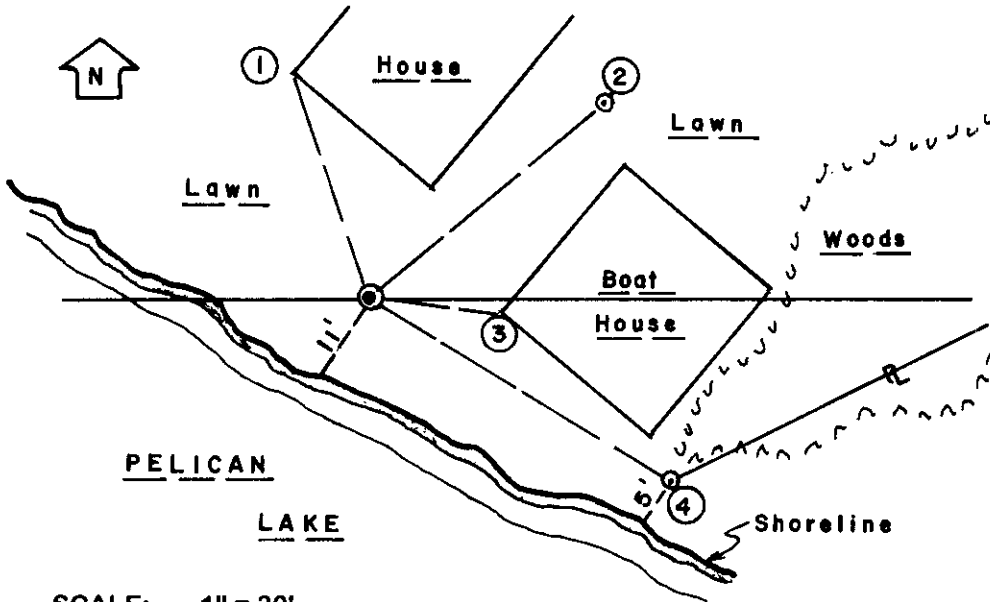
In June 1915, D.H. Vaughan set a wood post as a Witness MC on shore of Pelican Lake and marked new BTs: a 7" Bw N33°E 23 links and a 6" Bw S84°E 46.5 links per Oneida County survey records; all now gone.

In 1950, F.R. Wincentsen/RLS 155 notes an iron pipe as Witness MC and a 5" Cherry BT S87°E 8.0' per Plat of Survey C-193 in Oneida County records; both now obliterated.

In 1994, William E. Bandow/RLS 1182 indicates a 1" iron pipe found as Witness MC per Certified Survey Map No. 1669 in Oneida County records; iron pipe now gone due to previous on-site grading per adjacent owners Dave and Sandra Servi.

Reestablishment completed in 2 days on October 4, 2001 and directly witnessed by the adjacent owner Dave Servi.

Plan view map of monument location with bearing and distance ties to a minimum of four(4) described witness or reference monuments of concrete, natural stone, iron, live bearing trees or equivalent material. If applicable, also show a minimum of two(2) bearing and distance ties to any other monument found and not accepted; including the bearing and distance from the accepted monument.



**WITNESS MONUMENT TIES:**

- ① - Corner of concrete residence foundation at grade N19°W 37.25'.
- ② - 3/4" dia. by 24" long iron pipe set with yellow poly Reference Mark cap in top flush with lawn surface N50°E 46.90'.
- ③ - Corner of concrete boat house foundation at grade S83°E 21.20'.
- ④ - Standard 2" dia. by 30" long aluminum pipe monument set and stamped as a Witness corner to MC S59°E 55.30'. (See reverse page)

Standard white poly corner marker post not set in lawn area at owner's request.

SCALE: 1" = 30'

Unless otherwise indicated, all bearing tree ties are to a .25" dia. by 2.5" long PK nail with a 1.25" dia. steel washer driven into unblazed right face and a .25" dia. by 2.5" long PK nail with a 2" dia. steel washer stamped BT is also driven into unblazed face of bearing tree at DBH; the basis for measured bearings is by compass to nearest degree and all tie distances are measured horizontal by steel tape corrected to nearest 1/100th feet at standard temperature of 68° F.

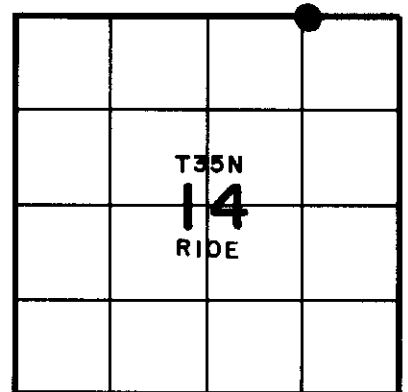
RLS SEAL:



LAND SURVEYOR CERTIFICATE:

I, William C. Rohde, hereby certify that I am duly licensed as a Professional Land Surveyor in the State of Wisconsin; that this USPLS monument location was determined by me and/or under my direct supervision and control; and that this U.S. Public Land Survey Monument Location Record is true and correct to the best of my knowledge and belief.

Signed: *William C. Rohde*  
William C. Rohde RLS 841



SECTION LOCATION MAP

INDEX NO. 3 20 21

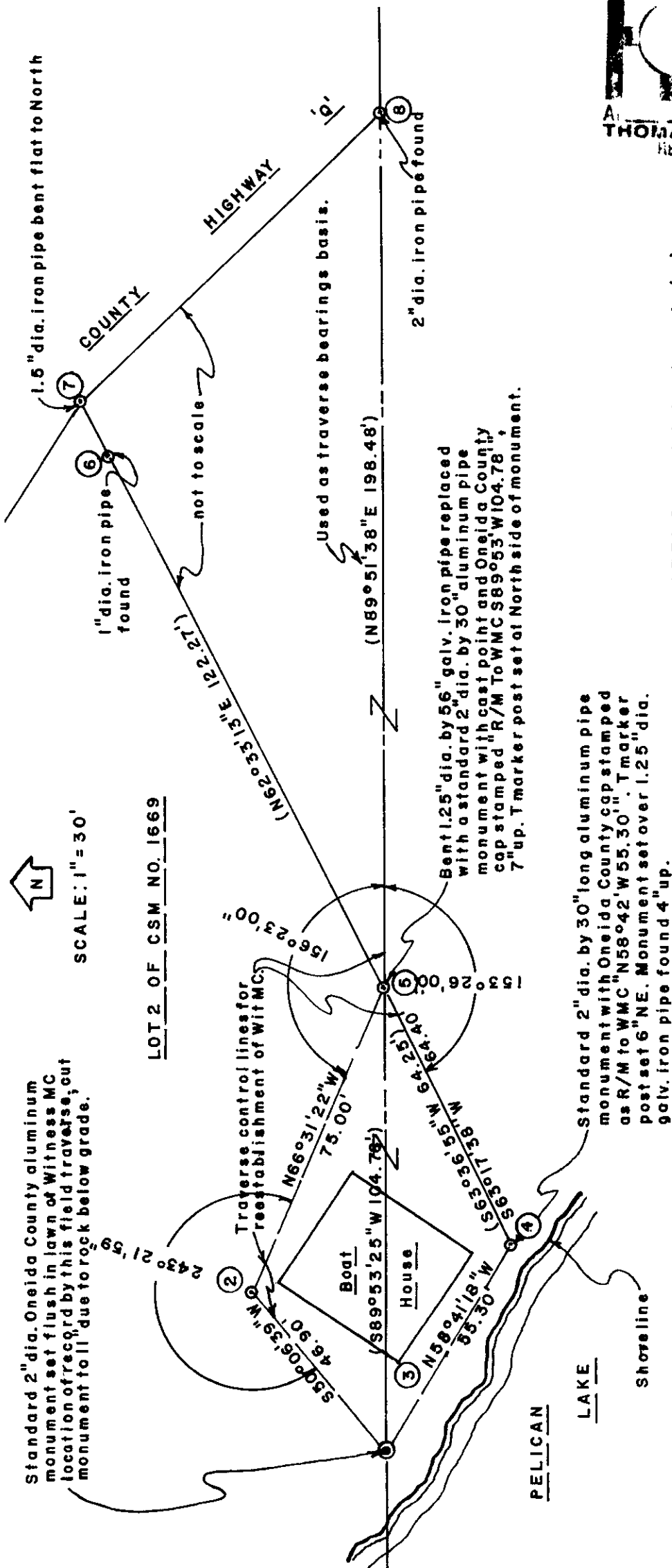


Stock No. 26273

REGISTER OF DEEDS OFFICE  
ONEIDA COUNTY, WIS.

APR 11 2002

THOMAS H. LEIGHTON, M.  
REGISTER OF DEEDS



NOTE: Record data shown in ( ).