

This form is intended to fulfill the requirements of Chapter A-E 7.08 (3)(a) thru (i) U.S. Public Land Survey Monument Location Record, Wisconsin Administrative Code. Use the reverse side of form for continuation.

U.S. PUBLIC LAND SURVEY MONUMENT LOCATION RECORD

Recorders Data

USPLS CORNER: WEST 1/4 CORNER SECTION: 18 TOWNSHIP: 35 NORTH RANGE: 11 EAST

NAME OF WATERWAY FOR M.C. CORNER: N/A SECTION LINE: N/A

(CITY)(VILLAGE)(TOWN) OF: SCHOEPKE COUNTY OF: ONEIDA

Description of monument found or placed and all other evidence used as the basis for monument location; including monuments and related measurements required if the corner location was reestablished by lost corner proportionate methods. Also indicate name of original surveyor, original survey date and the corner monument, bearing trees, witness or other reference monuments established; including measured bearing and distance ties, from available records.

Found and accepted a standard cast aluminum Berntsen monument with 4" dia. stamped aluminum Oneida County cap gone as evidenced by sheared off screw stub at roadway surface; undoubtedly from roadway grading or plowing. I left the monument in place, as remnant base appeared undisturbed, and set 1/4" dia. by 2.5" long PK nails in existing black top road surface 1.00' NW, 0.84' NE, 1.00' SE and 0.95' SW on right lines thru the monument center to aide future usage and recovery.

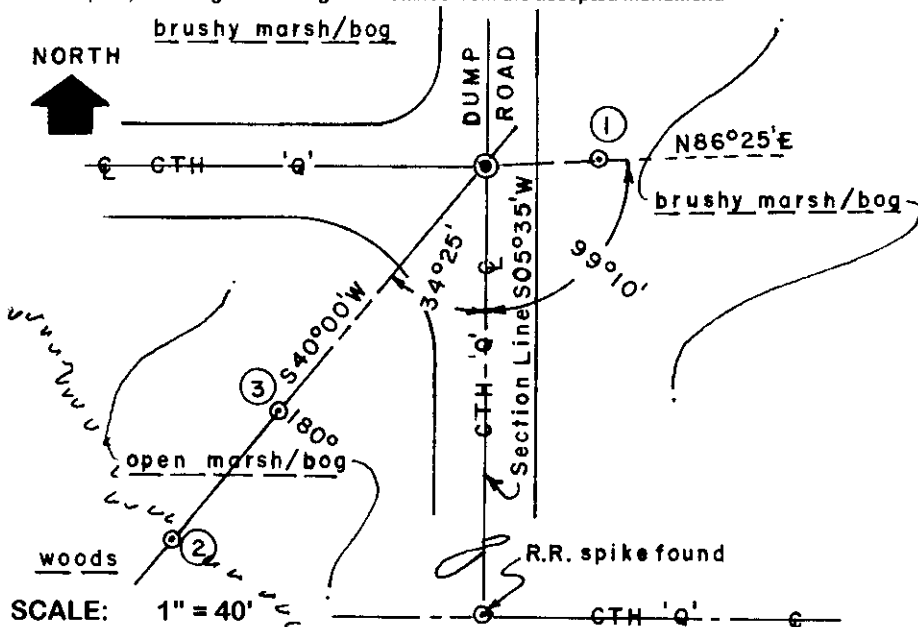
In July 1859, Hiram C. Fellow/GLO set a wood post as the original corner and marked OBTs: a 10" Tamarack N43°E 27 links and a 12" Tamarack S67°E 19 links, all of which are now obliterated beyond recovery purposes.

In October 1984, William E. Bandow, RLS 1182, found and accepted a 1.25" nominal dia. iron pipe monument at this corner and noted that it would be replaced with standard aluminum monument by the Oneida County Surveyor, so no ties were apparently taken, per his plat of survey filed as B-140 in Oneida County survey records.

I also found an older 13" Spruce BT with upper and lower face blazes open S36°W 102.5 feet to a 40d spike found in left face; I painted both old blazes blaze orange and I also found an older 12" Spruce BT with upper and lower face blazes shut but plain S52°W 100.1 feet to the center of the tree; I painted both old blazes blaze orange.

I set a standard white poly 'T' marker post 6" South of Witness Monument 3 and 6" East of Witness Monument 1. This recovery completed August 27, 1999; there were no direct witnesses other than by vehicle drive-bys.

Plan view map of monument location with bearing and distance ties to a minimum of four(4) described witness or reference monuments of concrete, natural stone, iron, live bearing trees or equivalent material. If applicable, also show a minimum of two(2) bearing and distance ties to any other monument found and not accepted; including the bearing and distance from the accepted monument.



WITNESS MONUMENT TIES:

- ① Standard 2" dia. by 30" long aluminum pipe monument set with stamped Oneida County cap 8" above matted marsh grass N86°25'E 22.90'.
- ② Same standard monument set with stamped cap 8" above marsh/bog surface S40°00'W 101.56'.
- ③ Same standard monument set with stamped cap 8" above marsh/bog surface S40°00'W 67.77'.

Indicated reference bearings from measured angles by transit to nearest minute, as no other suitable BTs near for ties in adjoining bog/marsh area surrounding the roadway junction.

Unless otherwise indicated, all bearing tree ties are to a .25" dia. by 2.5" long PK nail with a 1.25" dia. steel washer driven into unblazed right face and a .25" dia. by 2.5" long PK nail with a 2" dia. steel washer stamped BT is also driven into unblazed face of bearing tree at DBH; the basis for measured bearings is by compass to nearest degree and all tie distances are measured horizontal by steel tape corrected to nearest 1/100th feet at standard temperature of 68° F.

RLS SEAL:



LAND SURVEYOR CERTIFICATE:

I, William C. Rohde, hereby certify that I am duly licensed as a Professional Land Surveyor in the State of Wisconsin; that this USPLS monument location was determined by me and/or under my direct supervision and control; and that this U.S. Public Land Survey Monument Location Record is true and correct to the best of my knowledge and belief.

Signed: *William C. Rohde*
William C. Rohde RLS 841

Date Signed: January 20, 2000

	T 35N		
	18		
	R 11E		

SECTION LOCATION MAP
INDEX NO. 1

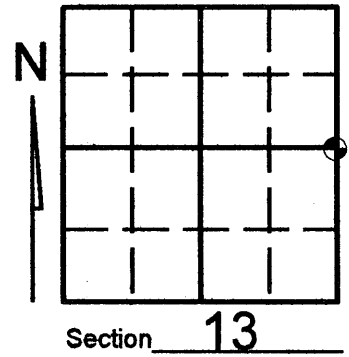
3510132000

U.S. PUBLIC LAND SURVEY MONUMENT RECORD

Note: This form is intended and designed to fulfill all requirements of Wisconsin Administrative Code, Chapter A-E 7.08 U.S. Public Land Survey Monument Record (3)(a)(b)(c)(d)(e)(f)(g)(h)(i). An additional sheet may be added if necessary to conform with said requirements.

(a) Corner location: Township 35 North
 Range 10 East/West

Town/City/Village SCHOEPKE
 County ONEIDA



(b) (f) (g) (h) Description of monument found at this corner and if it was accepted, state all evidence (material, testimonial, occupational, plats, records, other monuments) used as a basis for accepting. If not accepted or if nothing was found, state evidence used as basis for establishing location. If reestablished through lost corner proportionate methods, indicate all monuments, distances and directions used to establish. Indicate type of monument found or set and sign post.

SEE U.S.P.L. FORM L-1 FOR HISTORY OF CORNER

08/30/07: Kevin Bixby set railroad spike based on data contained in U.S.P.L. Form L-1 and witnessed as shown below.

REGISTER OF DEEDS OFFICE
ONEIDA COUNTY, WIS.

FILED

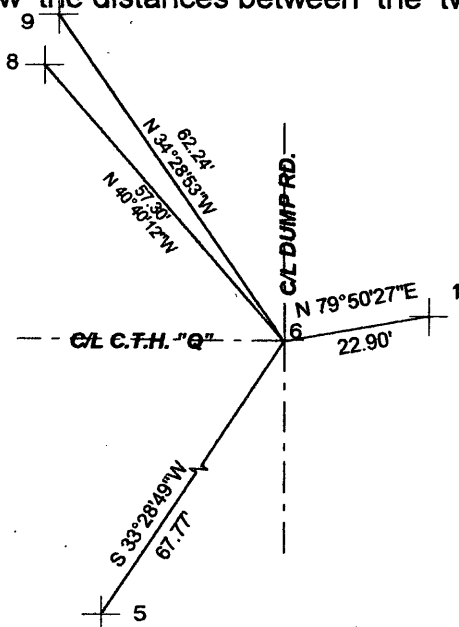
OCT 22 2007

At _____ O'Clock _____ M
THOMAS H. LEIGHTON
 REGISTER OF DEEDS

(c) (d) (e) Plan view of corner with ties to at least 4 witness monuments. If in disagreement with previously established corner, show the distances between the two corners and also indicate the ties to the disputed corner.

LEGEND

- 1-, -5-, EXISTING O.C.W.M. & WHITE SIGN POST
- 6- SET RAILROAD SPIKE
- 8- EXISTING 1" CAPPED I.P.
- 9- SET 1" X 24" I.P.



Angles and distances measured with total station

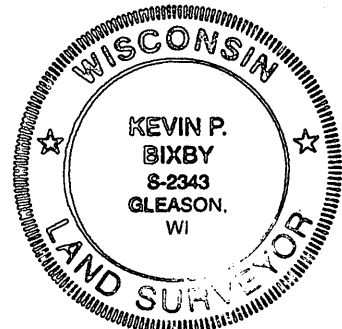


(i) I, KEVIN P. BIXBY

(type or print name) certify that the corner location on this record was determined by me or under my direction and control and that this U.S. Public Land Survey Monument Record is correct and complete to the best of my knowledge and belief.

Kevin P. Bixby
 Signature

09/07/07
 Date



Stamp

3510132000

Index No. L-25

U.S. PUBLIC LAND SURVEY MONUMENT RECORD

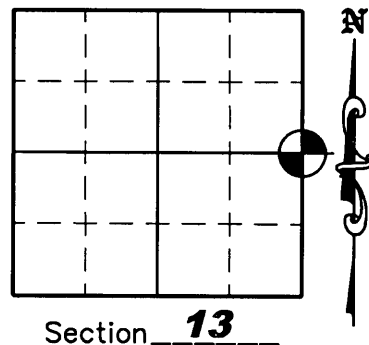
NOTE: This form is intended and designed to fulfill all requirements of Wisconsin Administrative Code, Chapter A-E 7 .08 U.S. Public Land Survey Monument Record (3)(a)(b)(c)(d)(e)(f)(g)(h)(i). An additional sheet may be added if necessary to conform with said requirements.

(a) Corner location: Township 35 North

Range 10 East

Town of SCHOEPKE

County of ONEIDA



Section 13

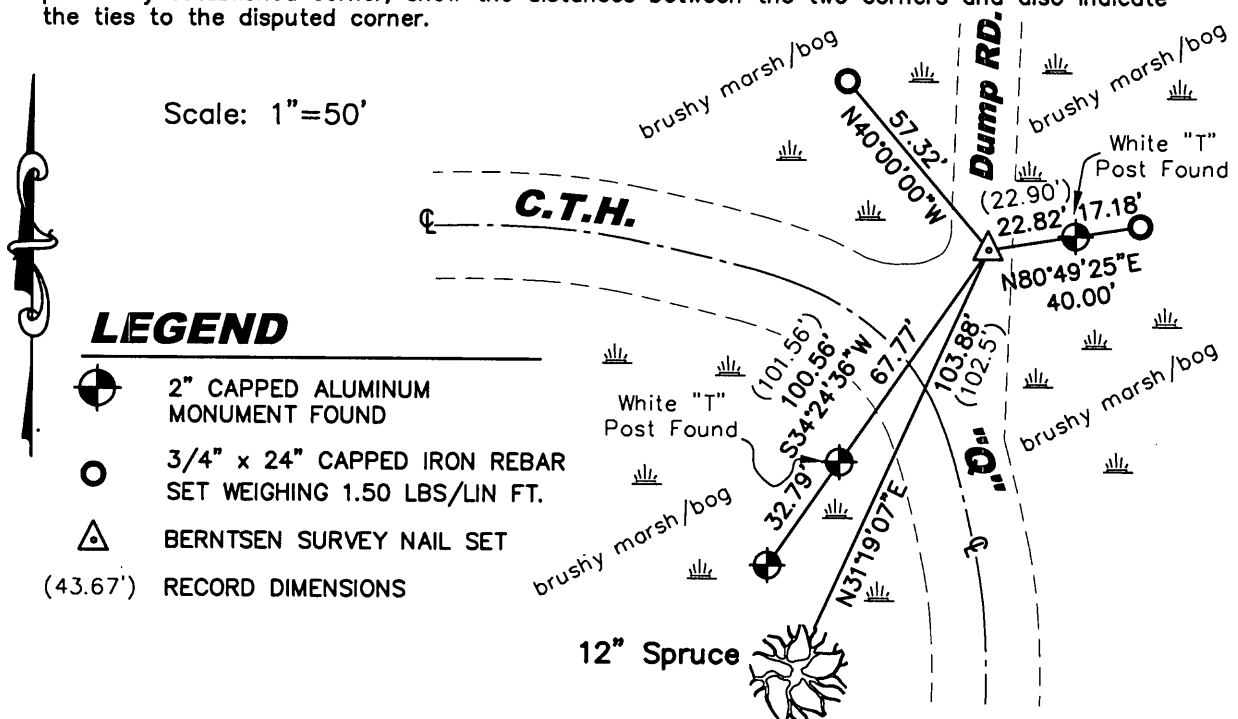
(b)(f)(g)(h) Description of monument found at this corner and if it was accepted, state all evidence (material, testimonial, occupation, plats, records, other monuments) used as a basis for accepting. If not accepted or if nothing was found, state evidence used as a basis for establishing location. If reestablished through lost corner proportionate methods, indicate all monuments, distances and directions used to establish. Indicate type of monument found or set and sign post.

August 27, 1999 – William C. Rhode found and accepted a cast aluminum Bernsten monument with cap gone and set 3 new aluminum monuments as witness corners. He also set a P.K. Nail 1.0' NW, 0.84' NE, 1.0' SE and 0.95' SW to aide in recovery. – See U.S.P.L.S. Monument Record dated January 20, 2000.

May 15, 2006 – Due to road construction Nicolet Surveyors, Inc. was contacted by the Oneida County Land Information Office to preserve the location of this survey marker. Jonathan W. Dulin found a 2" aluminum monument with the cap gone. We also found three 2" aluminum reference monuments and a 12" Spruce bearing tree with a Nail in the side. We also set two new reference corners as shown below.

November 7, 2007 – After road construction was complete we rechecked the ties and set a Bernstsen Survey Nail.

(c)(d)(e) Plan view of corner with ties to at least 4 witness monuments. If in disagreement with previously established corner, show the distances between the two corners and also indicate the ties to the disputed corner.



(i) I, Jonathan W. Dulin, certify that the corner location on this record was determined by me under my direction and control and that this U.S. Public Land Survey Monument is correct and complete to the best of my knowledge and belief.

Signature [Handwritten Signature] Date 11/8/2007

REGISTER OF DEEDS OFFICE
ONEIDA COUNTY, WIS.

FILED

NOV 16 2007

At _____ O'Clock _____ M
THOMAS H. LEIGHTON
REGISTER OF DEEDS
3510132000

Index No. L-25