

At _____ O'Clock _____ M
THOMAS H. LEIGHTON
REGISTER OF DEEDS
Recorders Data

This form is intended to fulfill the requirements of Chapter A-E7.08 (3)(a) thru (i) U.S. Public Land Survey Monument Location Record, Wisconsin Administrative Code. Use the reverse side of form for continuation.

U.S. PUBLIC LAND SURVEY MONUMENT LOCATION RECORD

USPLS CORNER: WEST WITNESS MC SECTION: 22 TOWNSHIP: 35 NORTH RANGE: 10 EAST

NAME OF WATERWAY FOR M.C. CORNER : PELICAN LAKE SECTION LINE: NORTH

~~(CITY)~~~~(VILLAGE)~~(TOWN) OF: ENTERPRISE COUNTY OF: ONEIDA

Description of monument found or placed and all other evidence used as the basis for monument location; including monuments and measurements required if the corner location was reestablished by lost corner proportionate methods. Also indicate name of the original surveyor, original survey date and the corner monument, bearing trees, witness or other reference monuments established, including measured bearing and distance ties, from available survey records.

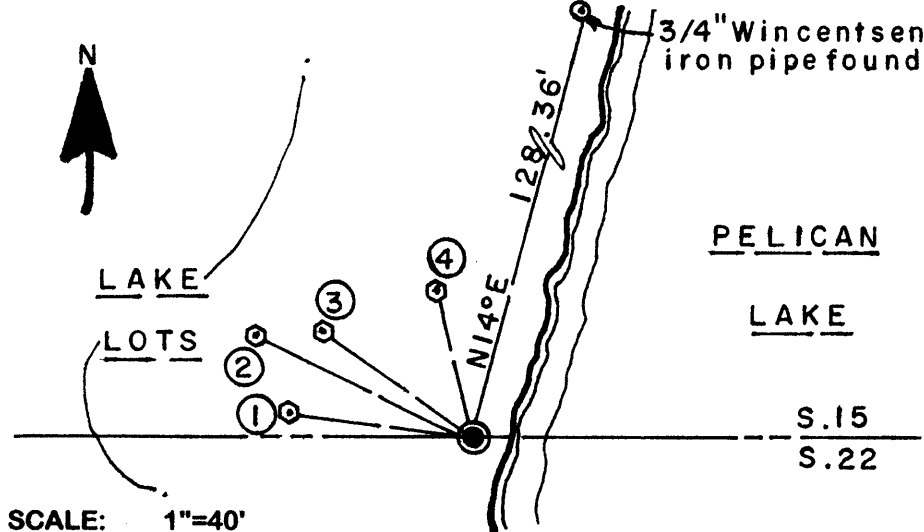
In September/October 1865, James L. Nowlin/GLO set a wood post as the original meander corner and noted OBTs: a 4" Cherry S82°W 15 links and a 5" Cherry N68°W 16 links; all are now obliterated.

In September 1962, Forrest R. Wincentsen/RLS 155 notes an iron pipe at this Witness MC per his map and notes on Pages 7 and 8 of Wincentsen Book 1 in Oneida County survey records.

In December 1967, Forrest R. Wincentsen/RLS 155 again indicates this Witness MC per his map and notes on Pages 14 and 15 of Wincentsen Book 1 in Oneida County survey records.

On June 30, 2006 I found an old 1.5" dia. uncapped iron pipe flush with existing lawn, which was reportedly set "roughly" by adjacent land owner(s) from Wincentsen iron pipe, still existing to NE 128'+/- along lake shore. I also found an older 1.25" dia. iron pipe bent to the North near the 1.5" dia. iron pipe, which I pulled as a 34" long well point and revealed its original plumb soil cavity below grade, that checked within 0.10' of the 128.36' record distance from Wincentsen iron pipe found to the NE along the lakeshore. Therefore, I replaced both of the older iron pipes with a standard 2" dia. x 30" long aluminum pipe monument with stamped Oneida County cap set flush with lawn into old well point soil cavity at the 128.36' record distance from the iron pipe found NE along the lakeshore, which was attested by owner John Miksic at Fire No. 1024 as having been set by Wincentsen at his SE parcel corner, and who also witnessed this corner recovery. Corner falls about 8' West of the existing lakeshore bearing S15°W.

Plan view map of monument location with bearing and distance ties to a minimum of four(4) described witness or reference monuments of concrete, natural stone, iron, live bearing trees or equivalent material. If applicable, also show a minimum of two(2) bearing and distance ties to any other monument found and not accepted; including the bearing and distance from the accepted monument.



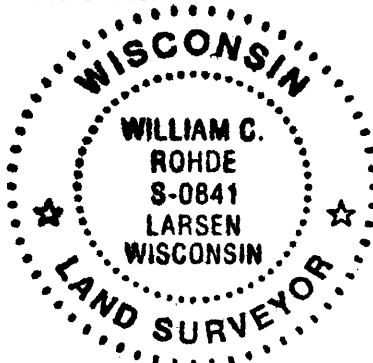
WITNESS MONUMENT TIES:

- ① New 8" Pr BT N82°W 38.12'.
- ② New 10" Sb BT N65°W 50.23'.
- ③ New 6.5" SE trunk of double Sb N55°W 28.60'.
- ④ New 7.5" Pr BT N15°W 31.96'.

Standard white poly 'T' marker post set 6" North of corner monument.

Unless otherwise indicated, all bearing tree ties are to a .25" dia. by 2.5" long PK nail with a 1.25" dia. steel washer driven into unblazed right face and a .25" dia. by 2.5" long PK nail with a 2" dia. steel washer stamped BT is also driven into unblazed face of bearing tree at DBH; the basis for measured bearings is by compass to nearest degree and all tie distances are measured horizontal by steel tape corrected to nearest 1/100th feet at standard temperature of 68° F.

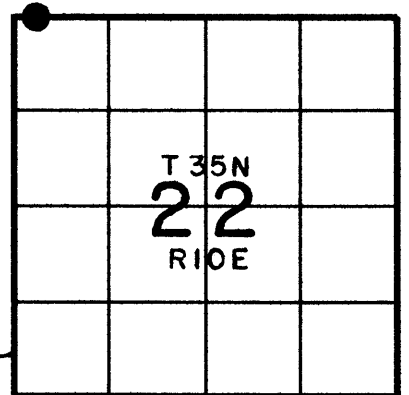
RLS SEAL:



LAND SURVEYOR CERTIFICATE:

I, William C. Rohde, hereby certify that I am duly licensed as a Professional Land Surveyor in the State of Wisconsin; that this USPLS monument location was determined by me and/or under my direct supervision and control; and that this U.S. Public Land Survey Monument Location Record is true and correct to the best of my knowledge and belief.

Signed: *William C. Rohde*
William C. Rohde RLS 841



SECTION LOCATION MAP
INDEX NO. N 13-14
3510150038