

U.S. PUBLIC LAND SURVEY MONUMENT RECORD

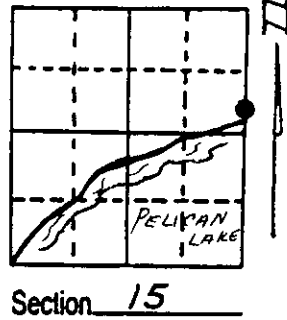
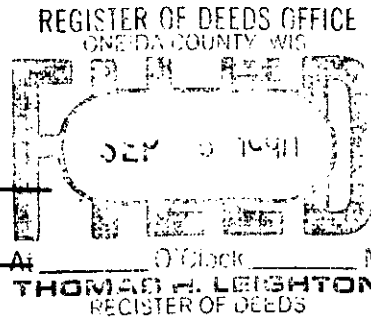
Note: This form is intended and designed to fulfill all requirements of Wisconsin Administrative Code, Chapter A-E 7.08 U.S. Public Land Survey Monument Record (3) (a) (b) (c) (d) (e) (f) (g) (h) (i). An additional sheet may be added if necessary to conform with said requirements.

(a) Corner location: Township 35 North

Range 10 East/West

Town/City/Village E. ENTERPRISE W. SCHOEPEKE

County ONEIDA



Section 15

(b) (f) (g) (h) Description of monument found at this corner and if it was accepted, state all evidence (material, testimonial, occupational, plats, records, other monuments) used as a basis for accepting. If not accepted or if nothing was found, state evidence used as basis for establishing location. If reestablished through lost corner proportionate methods, indicate all monuments, distances and directions used to establish. Indicate type of monument found or set and sign post.

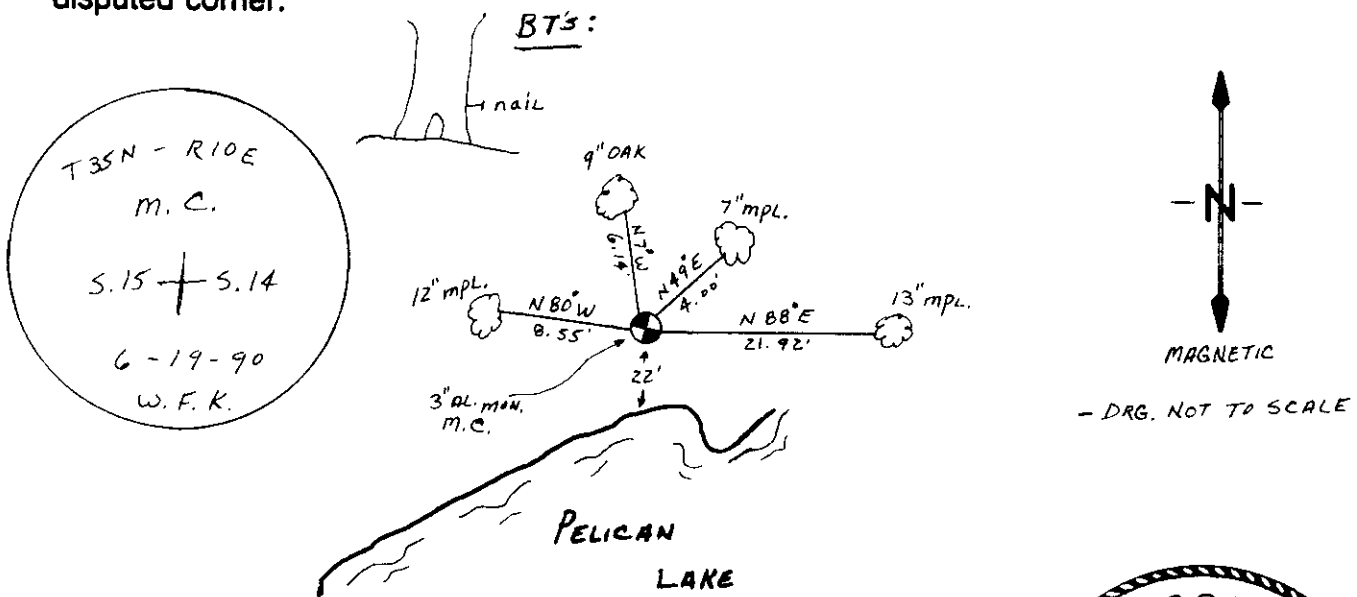
OCT. 1865, JAMES NOWLIN ESTABLISHED ORIGINAL MEANDER CORNER; B.T.'S: 4" ASPEN N30°W, 31 lks.
8" " N67°E, 30"

Nov. 1908, D.H. VAUGHAN SET M.C. & MADE NEW B.T.'S, 6" W. PINE N 81° E, 15 lks.
8" TAMARACK, N 19 1/2° W 33 lks.

1949, ROWINSKI ENGINEERING FOUND 4" IRON PIPE.

JUNE 1990, W.F. KELLY FOUND 4" IRON PIPE. SET 3" AL. MONUMENT. MARKED NEW WITNESS CORNERS

(c) (d) (e) Plan view of corner with ties to at least 4 witness monuments. If in disagreement with previously established corner, show the distances between the two corners and also indicate the ties to the disputed corner.



(i) I, WILLIAM F. KELLY
(type or print name) certify that the corner location on this record was determined by me or under my direction and control and that this U.S. Public Land Survey Monument Record is correct and complete to the best of my knowledge and belief.



William F. Kelly 8-28-90
Signature Date

Stamp
3510152400

Index No. KL-17