

# U.S. PUBLIC LAND SURVEY MONUMENT RECORD

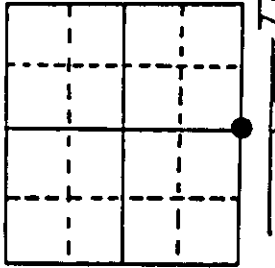
**Note:** This form is intended and designed to fulfill all requirements of Wisconsin Administrative Code, Chapter A-E 7.08 U.S. Public Land Survey Monument Record (3) (a) (b) (c) (d) (e) (f) (g) (h) (i). An additional sheet may be added if necessary to conform with said requirements.

(a) Corner location: Township 35 North

Range 10 East/West

Town/City/Village E. ENTERPRISE W. SCHOEPEKE

County ONEIDA



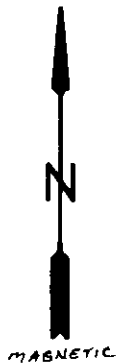
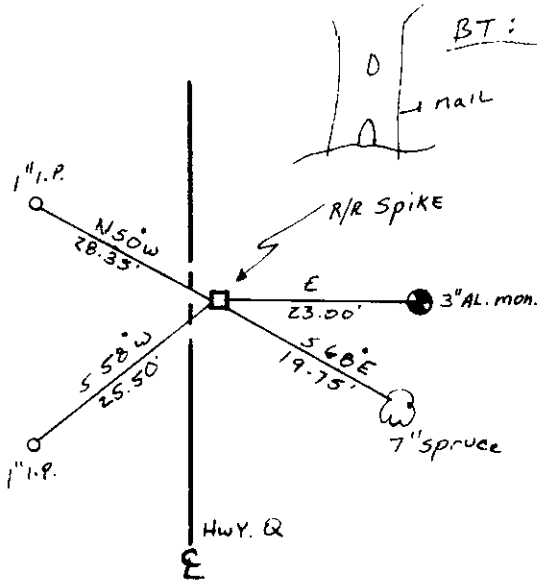
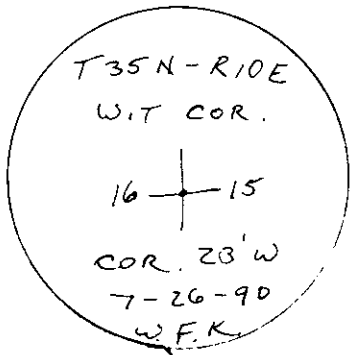
Section 16

(b) (f) (g) (h) Description of monument found at this corner and if it was accepted, state all evidence (material, testimonial, occupational, plats, records, other monuments) used as a basis for accepting. If not accepted or if nothing was found, state evidence used as basis for establishing location. If reestablished through lost corner proportionate methods, indicate all monuments, distances and directions used to establish. Indicate type of monument found or set and sign post.

1865 - JAMES NOWLIN ESTABLISHED ORIGINAL CORNER.

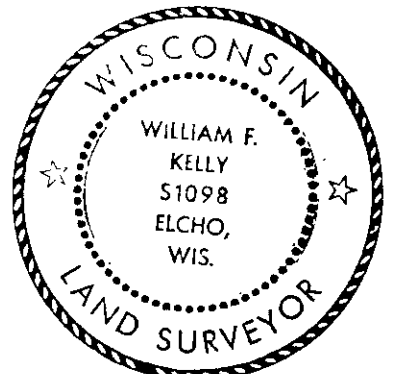
1990 - I FOUND IRON UNDER SURFACE OF ROAD SET R/R SPIKE OVER IRON. SET 3" AL. WITNESS MONUMENT & WHITE POST EAST OF CORNER. LOCATION OF CORNER CONFIRMED BY LOCAL RESIDENT (D. SCHMEKHEL)

(c) (d) (e) Plan view of corner with ties to at least 4 witness monuments. If in disagreement with previously established corner, show the distances between the two corners and also indicate the ties to the disputed corner.



— NO SCALE

(i) I, WILLIAM F. KELLY  
 (type or print name) certify that the corner location on this record was determined by me or under my direction and control and that this U.S. Public Land Survey Monument Record is correct and complete to the best of my knowledge and belief.



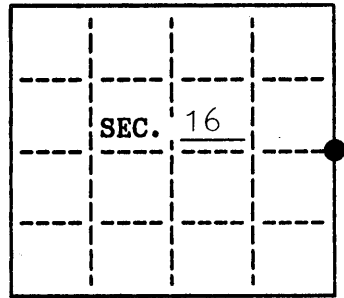
William F. Kelly Signature      8 28-90 Date

Stamp 3510162000

**U.S. PUBLIC LAND SURVEY MONUMENT RECORD**

Note: This form is intended and designed to fulfill all requirements of Wisconsin Administrative Code, Chapter A-8 7.08 U.S. Public Land Survey Monument Record (3)(a)(b)(c)(d)(e)(f)(g)(h)(i). An additional sheet may be added if necessary to conform with said requirements.

(a) CORNER LOCATION: Oneida County  
~~State Plane~~ **Coordinates**  
E 1/4 corner of Sec. 16 X 121449.445  
 Township 35 North Y 308911.773  
 Range 10 East Datum Base \_\_\_\_\_  
 Town/City Schoepke County of Oneida

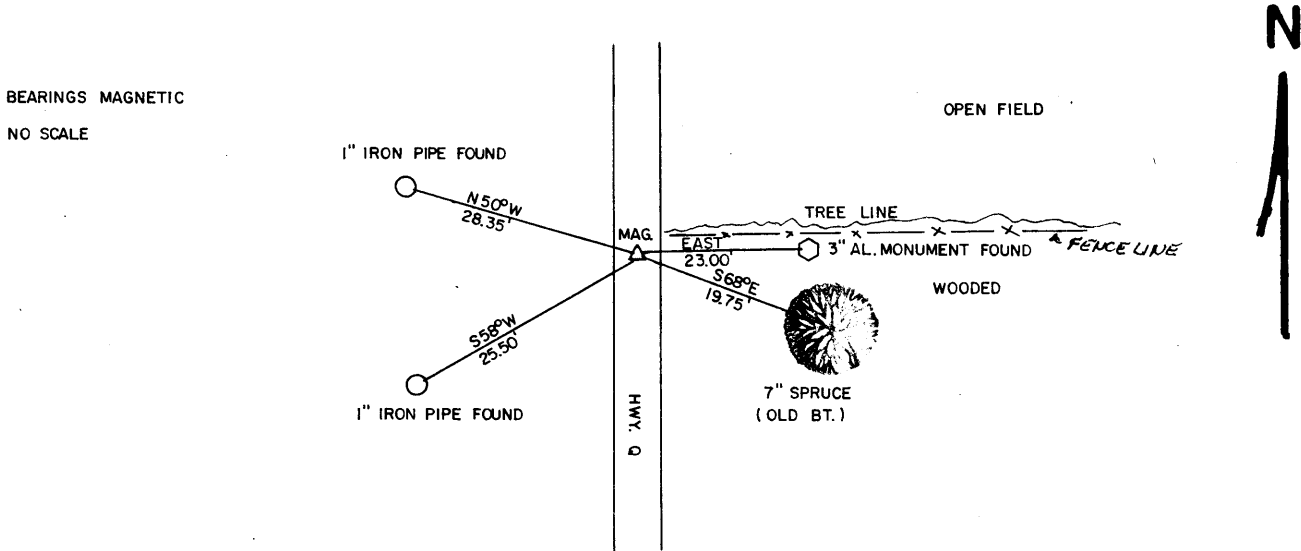


(b) HISTORY OF ORIGINAL CORNER ESTABLISHMENT  
 Original Surveyor: James Nowlin Original B.T.'s  
 Date of Survey: Commenced 1865  
 Completed 1865

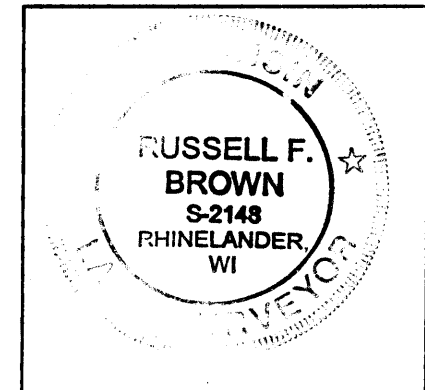
(b)(f)(g)(h) Description of monument found at this corner and if it was accepted, state all evidence (material, testimonial, occupational, plats, records, other monuments) used as a basis for accepting. If not accepted or if nothing was found, state evidence used as basis for establishing location. If reestablished through lost corner proportionate methods, indicate all monuments, distances and directions used to establish. Indicate type of monument and sign post found or set.

- 6-1966 Kirby found corner by Hall near c/l (Genisot map #3730)
- 6-1980 Immich found corner
- 1990 William Kelly found iron under surface of road. Set R.R. spike over iron. Set 3" alum. witness monument & white post east of corner. Location of corner confirmed by local resident C.D. Schmeichel.
- 10-2004 Found corner to be gone due to road construction. Set mag. nail per ties from Kelly's corner restoration sheet. Checked location with G.P.S. using Trimble 5700, 5800 and harn base station 239s with coord's given by Oneida County Land Information Office. Corner position per ties and G.P.S. location match.

(c)(d)(e) Plan view of corner with ties to at least 4 witness monuments. If in disagreement with previously established corner, show the distances between the two corners and also indicate the ties to the disputed.



(i) I, Russell F. Brown  
 hereby certify that the corner location on this record was determined by me or under my direction and control and that this U.S. Public Land Survey Monument Record is correct and complete to the best of my knowledge and belief.



Russell F. Brown 12/21/04  
 Signature Date

3510162000

INDEX NO. L-13