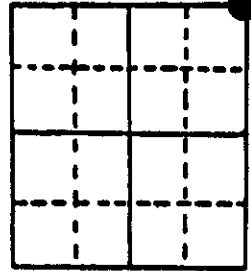
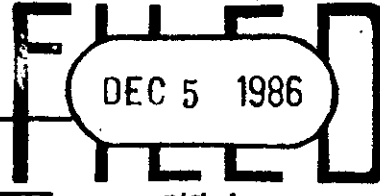


# U.S. PUBLIC LAND SURVEY MONUMENT RECORD

**Note:** This form is intended and designed to fulfill all requirements of Wisconsin Administrative Code, Chapter A-E 5.02, U.S. Public Land Survey Monument Record (3) (a) (b) (c) (d) (e) (f) (g) (h) (i). An additional sheet may be added if necessary to conform with said requirements.

(a) Corner location: Township 35 North  
 Range 10 East/West  
 Town/City/Village ENTERPRISE  
 County ONEIDA

REGISTER OF DEEDS OFFICE  
ONEIDA COUNTY, WIS.



NE  
SEC.  
COR.

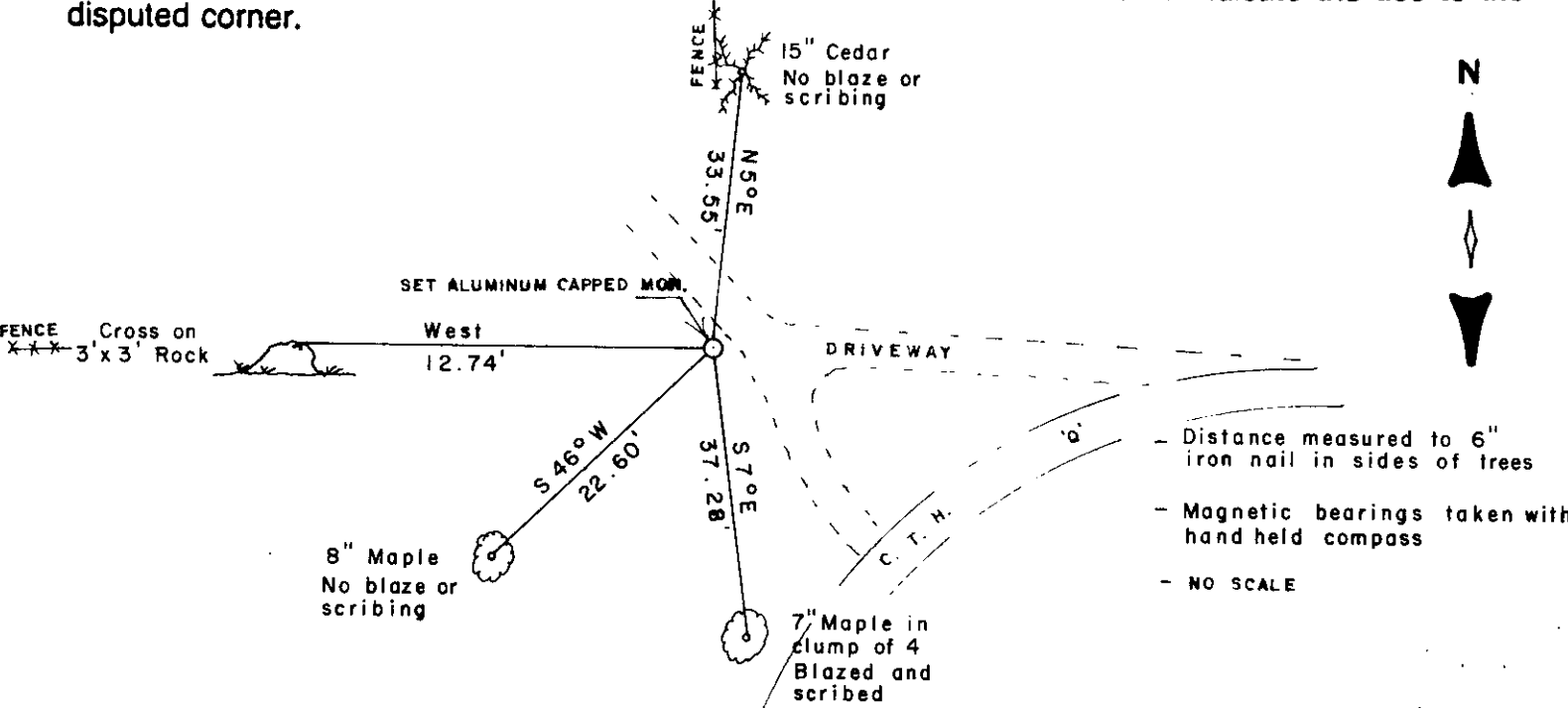
At ..... O'Clock ..... M  
DORIS VERAGE KUEHN  
REGISTER OF DEEDS

Section 30

(b) (f) (g) (h) Description of monument found at this corner and if it was accepted, state all evidence (material, testimonial, occupational, plats, records, other monuments) used as a basis for accepting. If not accepted or if nothing was found, state evidence used as basis for establishing location. If reestablished through lost corner proportionate methods, indicate all monuments, distances and directions used to establish.

1865-James L. Nowlen established original corner of 19,20,29,30 @ 80.00 ch. north of corner 29,30,31,32: B.T.s Sugar 12 N7°W 10lk., W.Pine 24 S29°E 8 lks.  
 1908-Town of Enterprise highway notice makes reference to a road running south from corner 19,20,29,30.  
 1921-Wisconsin Highway Commission has a work order card that states there are plans for a road ext'g SW'y 15,700'. commencing @ the S $\frac{1}{4}$  20-35-10.  
 1986-I contacted Marv Laspa @ the Dept. of Tran. to try and locate the road plans that the work order card makes reference to but he was unsuccessful in locating any plans or notes at his office or the Madison office. I searched the county highway office & the town records and was also unsuccessful in finding the plans. I contacted other surveyors but was still unable to find any record of the corner so I established the corner on the best available evidence that being local testimony as stated on the reverse side of this sheet and am of the opinion that the position pointed out to me is the most acceptable location as evidenced by the local improvements such as the road east & south and the fences running north & west. I set an aluminum capped monument at the corner and witnessed it as shown below.

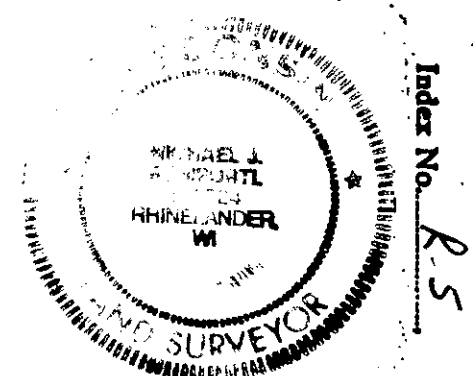
(c) (d) (e) Plan view of corner with ties to at least 4 witness monuments. If in disagreement with previously established corner, show the distances between the two corners and also indicate the ties to the disputed corner.



(i) I, MICHAEL J. ROMPORTL R.L.S. 1624  
 (type or print name) certify that the corner location on this record was determined by me or under my direction and control and that this U.S. Public Land Survey Monument Record is correct and complete to the best of my knowledge and belief.

Michael J. Romportl Oct. 27, 1986  
 Signature Date

GENISOT & ASSOCIATES INC.  
1512 EAGLE ST., RHINE, WI.



3510190000

**Stock No. 26273**

I, Donald Kunze having been a long time resident of the Town of Enterprize and I am Familiar with Section corners &  $\frac{1}{4}$  corners had the postion of the N.E. Corner of Section 30 Township 35 North Range 10 East pointed out to me by my father who saw the southeast bearing tree. At the E $\frac{1}{4}$  corner my father indicated that there was a scribed wood post oppisite the corner on the west side of the road. At the south S $\frac{1}{4}$  corner there is a well point on the south side of the road but the corner falls in the road.

That on April 28, 1986 I showed Michael J. Romportl the corner positions and to the best of my knowledge and recollection the information is true and correct.

Donald Kunze  
Donald Kunze

April 28th 1986