

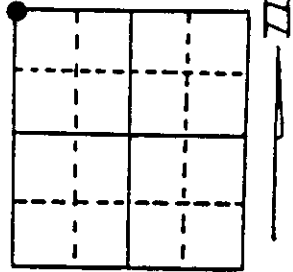
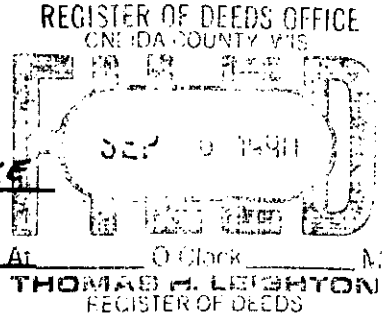
U.S. PUBLIC LAND SURVEY MONUMENT RECORD

Note: This form is intended and designed to fulfill all requirements of Wisconsin Administrative Code, Chapter A-E 7.08 U.S. Public Land Survey Monument Record (3) (a) (b) (c) (d) (e) (f) (g) (h) (i). An additional sheet may be added if necessary to conform with said requirements.

(a) Corner location: Township 35 North
 Range 10 East/West

Town/City/Village E. ENTERPRISE W. SCHOEPEKE

County ONEIDA



Section 28

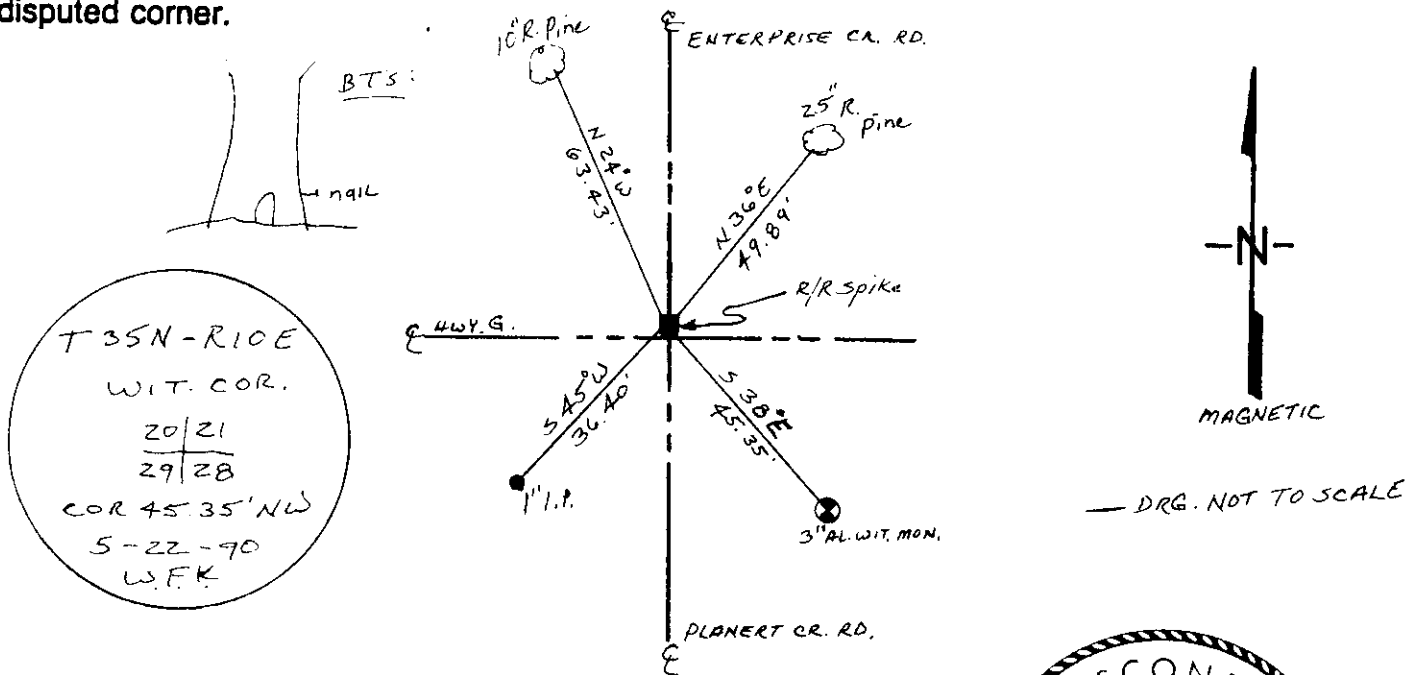
(b) (f) (g) (h) Description of monument found at this corner and if it was accepted, state all evidence (material, testimonial, occupational, plats, records, other monuments) used as a basis for accepting. If not accepted or if nothing was found, state evidence used as basis for establishing location. If reestablished through lost corner proportionate methods, indicate all monuments, distances and directions used to establish. Indicate type of monument found or set and sign post.

1865 - JAMES NOWLIN ESTABLISHED ORIGINAL CORNER

1904 - VAUGHAN SET BRAKE ROD; BTS: 28" HEMLOCK, S17°W, 1.21 KLS.
 11" SUGAR, N67 1/2°W 1.27 3/4 KLS.

1990 - I FOUND IRON UNDER SURFACE OF ROAD. SET R/R SPIKE OVER IRON & SET 3" AL. WITNESS MONUMENT SE. SET POST NENT TO AL WIT. MON. MARKED NEW BEARING TREES SET 1" IP WIT. COR.

(c) (d) (e) Plan view of corner with ties to at least 4 witness monuments. If in disagreement with previously established corner, show the distances between the two corners and also indicate the ties to the disputed corner.



(i) I, WILLIAM F. KELLY
 (type or print name) certify that the corner location on this record was determined by me or under my direction and control and that this U.S. Public Land Survey Monument Record is correct and complete to the best of my knowledge and belief.

William F. Kelly 8/27/90
 Signature Date



Index No. R-9

Stamp

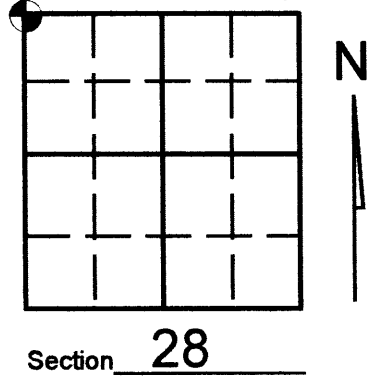
351020000

U.S. PUBLIC LAND SURVEY MONUMENT RECORD

Note: This form is intended and designed to fulfill all requirements of Wisconsin Administrative Code, Chapter A-E 7.08 U.S. Public Land Survey Monument Record (3)(a)(b)(c)(d)(e)(f)(g)(h)(i). An additional sheet may be added if necessary to conform with said requirements.

(a) Corner location: Township 35 North
 Range 10 East/West

Town/City/Village ENTERPRISE
 County ONEIDA

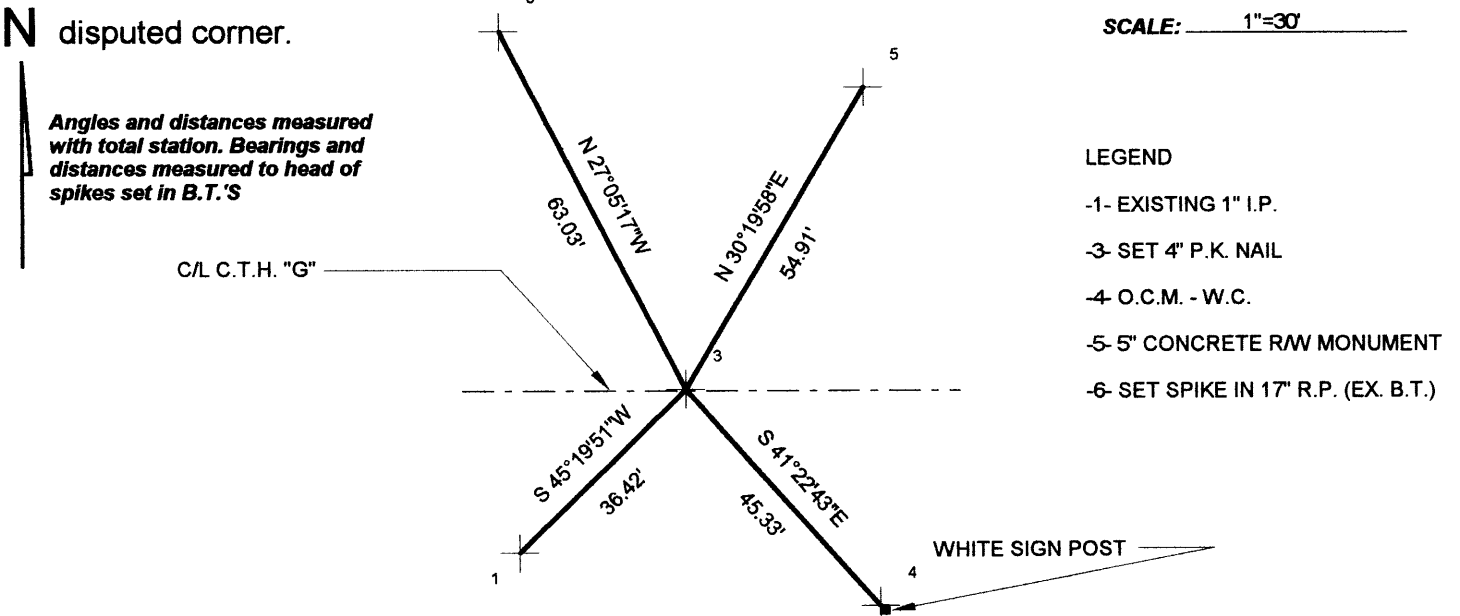


(b) (f) (g) (h) Description of monument found at this corner and if it was accepted, state all evidence (material, testimonial, occupational, plats, records, other monuments) used as a basis for accepting. If not accepted or if nothing was found, state evidence used as basis for establishing location. If reestablished through lost corner proportionate methods, indicate all monuments, distances and directions used to establish. Indicate type of monument found or set and sign post.

See U.S. Land Survey Monument Record form R-9 for history of corner.

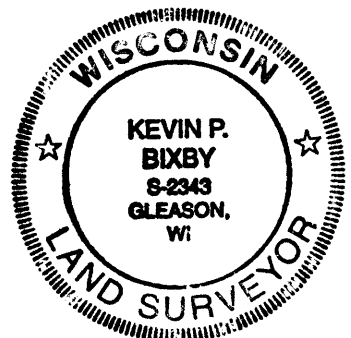
- PRECONSTRUCTION - Found P.K. nail and some accessories as noted on above said form R-9
- APRIL 2005 POST CONSTRUCTION, KEVIN BIXBY - Reset 4" P.K. nail and witnessed as shown below.

(c) (d) (e) Plan view of corner with ties to at least 4 witness monuments. If in disagreement with previously established corner, show the distances between the two corners and also indicate the ties to the disputed corner.



(i) I, KEVIN P. BIXBY
 (type or print name) certify that the corner location on this record was determined by me or under my direction and control and that this U.S. Public Land Survey Monument Record is correct and complete to the best of my knowledge and belief.

Kevin P. Bixby
 Signature 04/10/05
 Date



Stamp
 3510200000

Index No. R-9