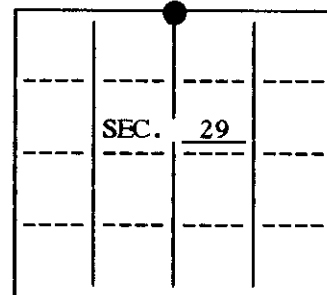


**U.S. PUBLIC LAND SURVEY MONUMENT RECORD**

Note: This form is intended and designed to fulfill all requirements of Wisconsin Administrative Code, Chapter A-E 7.08 U.S. Public Land Survey Monument Record (3) (a)(b)(c)(d)(e)(f)(g)(h)(i). An additional sheet may be added if necessary to conform with said requirements.

(a) CORNER LOCATION: State Plane Coordinates  
 North 1/4 corner of Sec. 29 X \_\_\_\_\_  
 Township 35 North Y \_\_\_\_\_  
 Range 10 East Datum Base \_\_\_\_\_  
 Town/City Enterprise County of Oneida



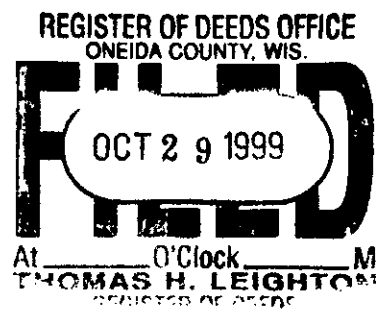
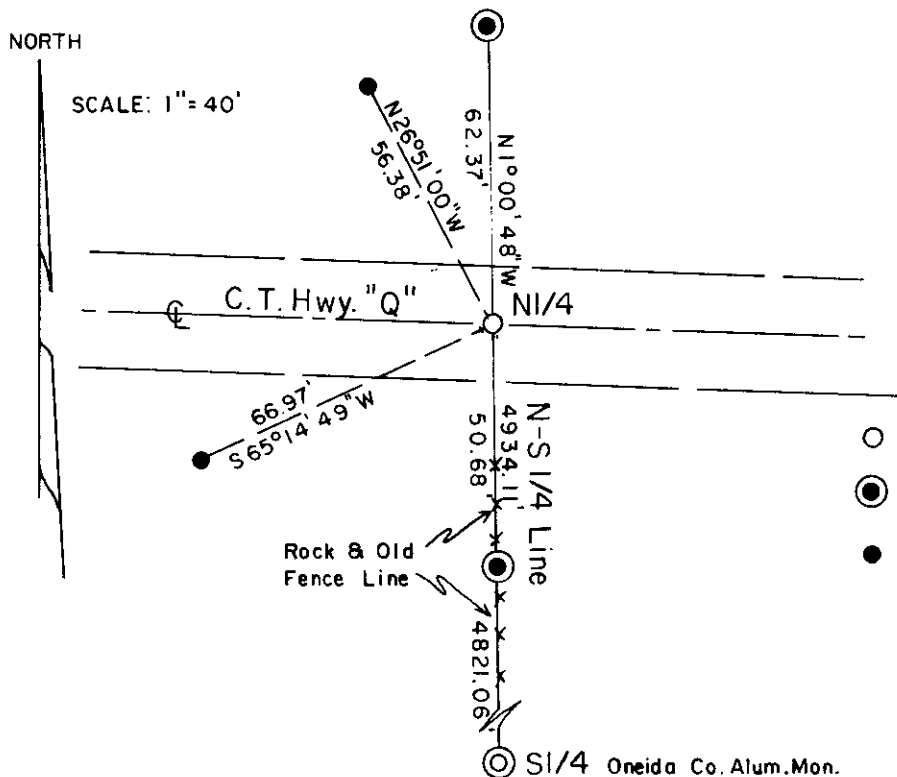
(b) HISTORY OF ORIGINAL CORNER ESTABLISHMENT  
 Original Surveyor: James McBride Original B.T.'S

Date of Survey: Commenced October 1, 1864 15" Hemlock N 10° W 20 Lks.  
 Completed October 20, 1864 12" Hemlock S 20° W 12 Lks.

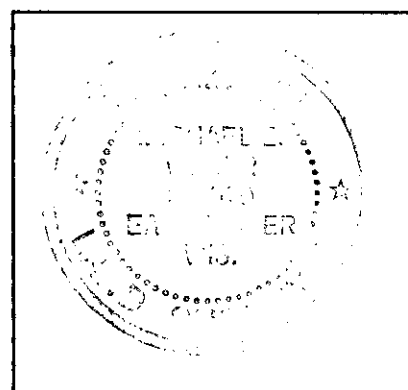
(b)(f)(g)(h) Description of monument found at this corner and if it was accepted, state all evidence (material, testimonial, occupational, plats, records, other monuments) used as a basis for accepting. If not accepted or if nothing was found, state evidence used as basis for establishing location. If reestablished through lost corner proportionate methods, indicate all monuments, distances and directions used to establish. Indicate type of monument and sign post found or set.

Could find no evidence of any type of monument at this location after an extensive search. We established the corner position in line with an old long established fence and rock line to the South and extended this line North to intersect the centerline of County Hwy. Q. We set a 1" iron pipe at this position in the pavement of said Hwy. Q. We found two plastic capped re-bar R/W monuments as shown below. We set two aluminum reference monuments stamped with the distance to the 1/4 corner as shown below.

(c)(d)(e) Plan view of corner with ties to at least four witness monuments. If in disagreement with previously established corner, show the distances between the two corners and also indicate the ties to the disputed.



- 1" Iron Pipe set in pavement
- Oneida County Aluminum Reference Monument Set
- Plastic Capped Re-Bar R/W Monument



(i) I, Michael E. Weber, R.L.S. 2070 hereby certify that the corner location on this record was determined by me or under my direction and control and that this U.S. Public Land Survey Monument Record is correct and complete to the best of my knowledge and belief.

Michael E Weber 10/8/99  
 Signature Date

3510200020

INDEX NO. R-7